

By Post & Fax (2147-0894)

The EIA Ordinance Register Office
Environmental Protection Department
27th floor, Southorn Centre,
130 Hennessy Road, Wan Chai, Hong Kong

Attention: Mr Andy WONG Wing Hong (Asst Env Protection Offr (Metro Assessment) 24)

Level 5, Festival Walk
80 Tat Chee Avenue
Kowloon Tong, Kowloon
Hong Kong

t +852 2528 3031
d +852 2268 3207
f +852 2268 3950

franki.chiu@arup.com
www.arup.com

10 Apr 2024

Dear Mr. Wong

Contract No. CM 4/2017

**Independent Environmental Checker for Construction of Dry Weather Flow
Interceptor at Cherry Street Box Culvert
Submission of Monthly Environmental Audit Report No.75**

In accordance with Clause 2.1 of the Environmental Permit for Proposed Sewage Pumping Station and Dry Weather Flow Interceptor at Cherry Street Box Culvert (No. EP-523/2016), we are pleased to submit herewith four hard copies and one electronic copy of the Monthly Environmental Audit Report No.75 for your perusal.

If you require any further information, please do not hesitate to contact the undersigned.

Yours sincerely



Franki Chiu
Independent Environmental Checker

Enc

cc. DSD
Black & Veatch Hong Kong Limited
CMGC-TECEL Joint Venture

Mr. Jason Cheung (one hardcopy)
Mr. Joseph Ho (one hardcopy)
Mr. Benson Yau (one hardcopy)

Drainage Services Department
Contract No. CM 4/2017
Independent Environmental
Checker for Construction of Dry
Weather Flow Interceptor at
Cherry Street Box Culvert

Monthly Environmental Audit
Report No.75 (Mar 2024)

Monthly Environmental Audit Report

First version | Mar 2024

This report takes into account the particular instructions and requirements of our client.

It is not intended for and should not be relied upon by any third party and no responsibility is undertaken to any third party.

Job number 258952

Ove Arup & Partners Hong Kong Ltd
Level 5 Festival Walk
80 Tat Chee Avenue
Kowloon Tong
Kowloon
Hong Kong
www.arup.com

ARUP

Contents

	Page
1 INTRODUCTION	1
1.1 Background	1
1.2 Scope of the Assignment	2
2 Project Organization	3
2.1 Project Organization and Management Structure	3
2.2 Construction Activities in the Reporting Period	3
3 Concise Overview of Assignment Progress	3
4 Status on Implementation of Environmental Mitigation Measures	3
5 Major Accomplishment	7
5.1 Deliverables	7
5.2 Meetings	7
5.3 Summary of Work Done	7
5.4 IEC Site Audit	8

Figures

Figure 1 Project Location

Appendices

Appendix A Project Organization and Contacts of Key Personnel

1 INTRODUCTION

1.1 Background

The existing Cherry Street Box Culvert (CSBC) is a reinforced concrete 8-cell stormwater box culvert; each cell is 4.8 m wide and 3.5 m high. The CSBC collects run-off from three upstream box culverts underneath Palm Street, Cheung Wong Road and a section of West Kowloon Corridor West and ultimately discharges into the New Yau Ma Tei Typhoon Shelter (NYMTTS).

At present, the water quality at NYMTTS and the odour associated with it remains unsatisfactory. It is believed that polluted flow, including those from the expedient connections, cross-connections between the foul water sewerage and the stormwater drainage system in the area found their way into the CSBC and in turn discharges into NYMTTS. Measures have to be taken to improve the present conditions at the CSBC.

In 2010, Environmental Protection Department (EPD) completed a West Kowloon and Tsuen Wan Sewerage Master Plans Study Review and recommended to construct a dry weather flow interceptor (DWFI) at the outfall of the CSBC. Upon commissioning of the DWFI system, the intercepted flow would be discharged to the existing sewerage system via proposed discharge sewerage.

The proposed DWFI system will comprise construction of a DWFI at the CSBC to intercept the dry weather flow (DWF) inside the box culvert and construction of a sewage pumping station to pump the intercepted DWF to the existing sewerage network via proposed twin rising mains.

The Project titled “Construction of dry weather flow interceptor at Cherry Street box culvert” mainly comprises the construction of (i) an underground DWFI with automatic penstocks at CSBC; (ii) a pumping station; (iii) an underground stormwater bypass box culvert; and (iv) about 270 metres of underground twin rising main from the pumping station in (ii) above to an existing sewer at Lin Cheung Road. The Project will be implemented under PWP Item No. 4380DS. The Project location is shown in **Figure 1**.

The Project is classified as a designated project under item F.3(b) (i), Part 1 of the Schedule 2 of the Environmental Impact Assessment Ordinance (Cap. 499) (EIAO), since the proposed sewage pumping station has an installed capacity (average dry weather flow) of more than 2,000m³ per day and its boundary is less than 150 m from an existing residential area.

A project profile (Register No. PP-527/2015) (“Project Profile”) entitled “Proposed Sewage Pumping Station and Dry Weather Flow Interceptor at Cherry Street Box Culvert” was submitted to Environmental Protection Department (EPD) under Application No. DIR241/2015. Permission to apply directly for environmental permit was granted by EPD in September 2015. An Environmental Permit (EP-

523/2016) (“EP”) to construct and operate the Designated Project was issued to Drainage Services Department (DSD) on 23 December 2016.

According to the EP, DSD shall employ an Independent Environmental Checker (“IEC”) to audit the implementation of all mitigation measures recommended in the Project Profile and required under the EP, and certify in writing in the monthly audit report full implementation of the mitigation measures during the construction phase of the Project

Arup was commissioned by DSD as the IEC in accordance with the conditions stipulated in the EP (EP-523/2016) for a period of 64 months from 8 January 2018.

1.2 Scope of the Assignment

Scope of work of this Assignment includes:

- (i) Provide the continual services of an IEC as stipulated in the Project Profile and the EP and reporting the findings to the Employer and the Engineer. The role of the IEC shall be independent from the Contractors;
- (ii) Conduct monthly site audits on the implementation of all mitigation measures recommended in the Project Profile and the EP and reporting the findings to the Employer and the Engineer;
- (iii) Advise the Engineer and the Employer on environmental issues related to the implementation of environmental mitigation measures under Contract No. DC/2017/01;
- (iv) Provide comments on the environmental aspects of the works programme, method statements and other relevant submissions by the Contractors;
- (v) Attend the monthly Site Safety and Environmental Management Committee (SSEMC) meetings;
- (vi) Report the findings of the site inspection and other environmental performance reviews to the Engineer and the Employer; and
- (vii) Submit monthly audit reports to EPD and confirming in writing in the report full implementation of the mitigation measures as recommended in the Project Profile and EP during and upon completion of the construction works under Contract No. DC/2017/01.

2 Project Organization

2.1 Project Organization and Management Structure

The project organization and contacts of key personnel of the Project are shown in **Appendix A**.

3 Concise Overview of Assignment Period

3.1 Construction Activities in the Reporting Period

The construction activities carried out by the Contractor during the reporting period included the following:

- Defect rectification works.

The environmental performance was considered acceptable during the assignment period from 1 Mar 2024 to 31 Mar 2024.

4 Status on Implementation of Environmental Mitigation Measures

The potential environmental impacts and proposed mitigation measures to be incorporated into the design and construction of the Project are summarised in **Table 4.1** below.

Table 4.1 Summary of potential environmental impacts and proposed environmental mitigation measures

Mitigation Measures	Implementation Agent	Status
Dust nuisance		
1. Adopt dust control and suppression measures as stipulated in the Air Pollution Control (Construction Dust) Regulation.	Contractor (Construction Phase)	Implemented
2. Water spraying on exposed area and during excavation.		Implemented
3. Provide wheel-washing facilities.		Implemented
4. Cover stockpile of dusty materials by impervious sheets.		Implemented

Mitigation Measures	Implementation Agent	Status
5. Provide hoarding of not less than 2.4m high from ground level along the site boundary adjoining Hoi Fai Road.		Implemented, during construction phase
6. Cover dusty load on trucks before they leave the construction site.		Implemented
7. Avoid concurrent excavation activities for construction of underground DWFI, underground emergency stormwater bypass culvert and CSBCSPS.		Implemented
8. Minimize area involving dusty construction activities by arrangement of construction activities and methods.		Implemented
Odour		
1. Locate the inlet chamber, screen chamber, valve chamber and wet well of the sewage pumping station underground and enclose them by a reinforced concrete structure. EP-523/2016 Specific Conditions 2.2 (i)	Contractor (Construction Phase) DSD (Operational Phase)	Implemented
2. Install and properly maintain a deodorizer with a forced ventilation system and an odour removal efficiency of at least 99.5%. EP-523/2016 Specific Conditions 2.2 (ii)		Implemented
Water Quality		
1. Control construction surface run-off according to ProPECC PN1/94, EPD's Practice Note for Professional Persons, Construction Site Drainage.	Contractor (Construction Phase)	Implemented
2. All chemical tanks and storage areas will be provided with locks and placed on sealed areas, within bunds of a capacity equal to 110% of the storage capacity of the largest tank.		Implemented

Mitigation Measures	Implementation Agent	Status
3. Install and properly maintain a standby pump and dual power supply. EP-523/2016 Specific Conditions 2.4 (i)	Contractor (Construction Phase)	Implemented
4. Provide a telemetry system to transmit signals showing irregularity or operational problem of the sewage pumping station and the dry weather flow interceptor to the Stonecutters Island Sewage Treatment Works. EP-523/2016 Specific Conditions 2.4 (ii)		DSD (Operational Phase)
Noise		
1. Adoption of standard control measures such as adopting quiet mechanical equipment, temporary noise barriers and good site practices etc.	Contractor (Construction Phase)	Implemented
2. Construction Noise Permit is required for construction work during restricted hours as defined under the Noise Control Ordinance.		Implemented
3. Locate the pumps and screening facilities of the sewage pumping station underground and enclose them by a reinforced concrete structure. EP-523/2016 Specific Conditions 2.3 (i)		Implemented
4. Install all outlets of the extraction fans with acoustic louvers. EP-523/2016 Specific Conditions 2.3 (ii)		Implemented
Waste Management		
1. Standard waste management measures and good site practices in waste handling, disposal and transportation will be implemented.	Contractor (Construction Phase)	Implemented

Mitigation Measures	Implementation Agent	Status
2. The Contractor will be required to sort all C&D materials and general refuse into different categories for reuse on site, recycling and disposal at designated public fill reception facilities or landfills. Disposal of C&D materials will be managed through the trip-ticket system as stipulated in DEVB TC(W) No. 6/2010.		Implemented
3. All chemical wastes due to maintenance of equipment will be handled, stored and disposed of in accordance with the requirements of the Waste Disposal (Chemical Waste) (Chemical) Regulation.		Implemented
4. General refuse will be stored and disposed of separately from general construction waste and chemical waste. The storage bins for general refuse will be provided with lids, which should be kept closed to avoid odour nuisance and windblown litter. General refuse will be removed regularly and disposed of to landfills.		Implemented
Landscape and Visual		
1. Erect site hoarding with decorative features that are compatible with the surrounding environment;	Contractor (Construction Phase) DSD (Operational Phase)	Implemented
2. Maintain site cleanliness and tidiness;		Implemented
3. Properly manage construction waste in the works area;		Implemented
4. Reinstate all temporary works areas to its original conditions upon completion of works.		Implemented
5. Implement and properly maintain the landscape and visual mitigation measures (e.g. rooftop greening, grasscrete, paving lock, vertical greening, permanent shrub planter, removable shrub planter, bench with shelter, and removable planter with trees) as shown in Figure 2 of the EP.		Implemented

5 Major Accomplishment

5.1 Deliverables

Deliverables completed in the reporting period are summarised in **Table 5.1**.

Table 5.1 Completed deliverables

Description	Submitted by IEC
Monthly Environmental Audit Report No. 74 (Feb 2024)	8 Mar 2024

Planned deliverables to be completed in the coming reporting period is summarised in **Table 5.2**.

Table 5.2 Planned deliverables

Description	Planned Submission Date	Status
Monthly Environmental Audit Report No. 75 (Mar 2024)	10 Apr 2024	On schedule

5.2 Meetings

No meeting was held in the reporting month.

5.3 Summary of Work Done

Upon commencement of the Assignment, accumulated numbers of IEC monthly environmental audit report submission and various kinds of meetings are summarized in **Table 5.3**.

Table 5.3 Summary of work done

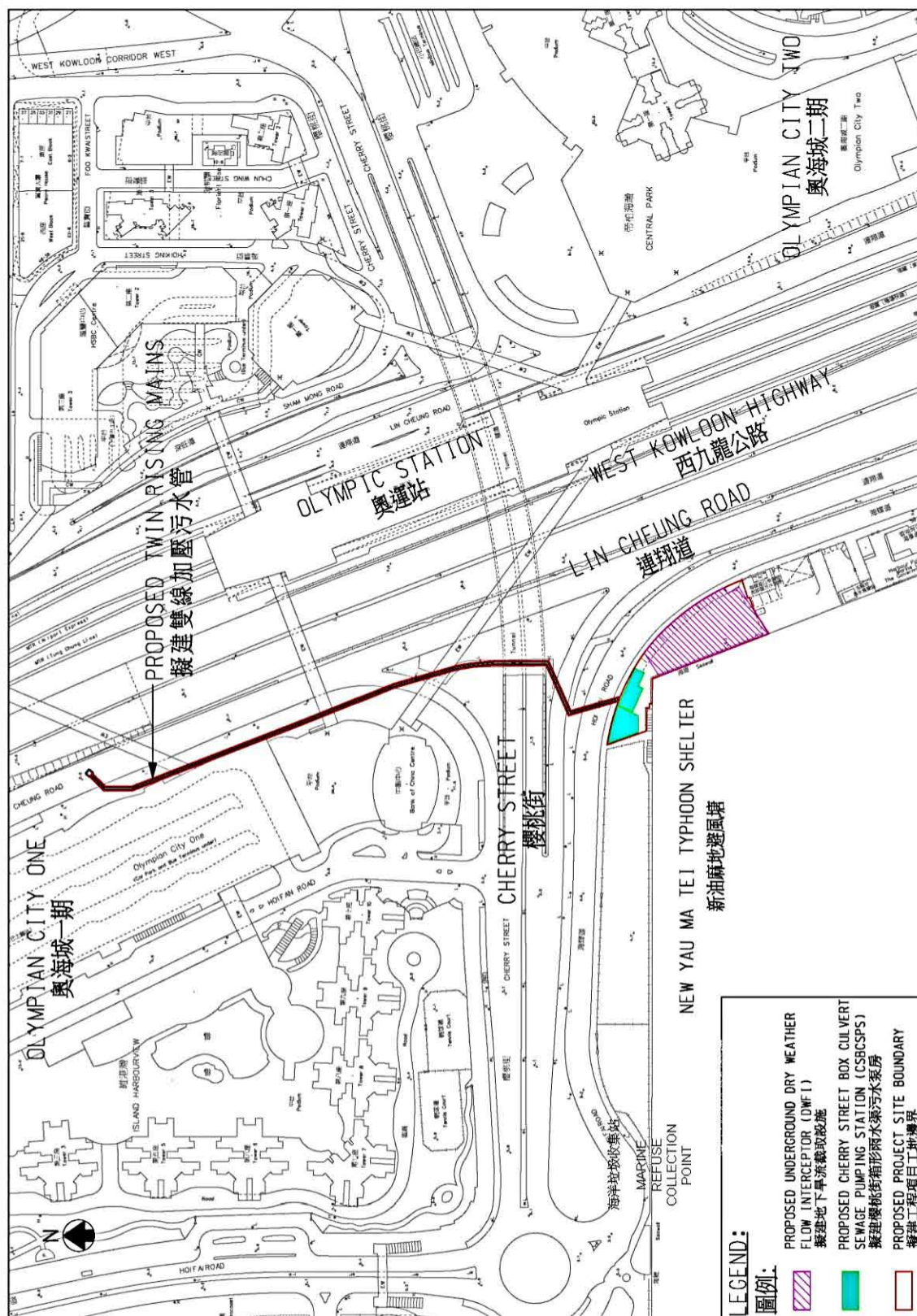
Work	Number
Reports	
IEC Monthly Environmental Audit Report	75
Meeting	
IEC monthly site inspection with DSD, Engineer Representative and Contractor	70
Project related meeting with DSD and EPD	1

5.4 IEC Site Audit

There is no IEC site audit was conducted in the reporting month.

Figure 1

Project Location



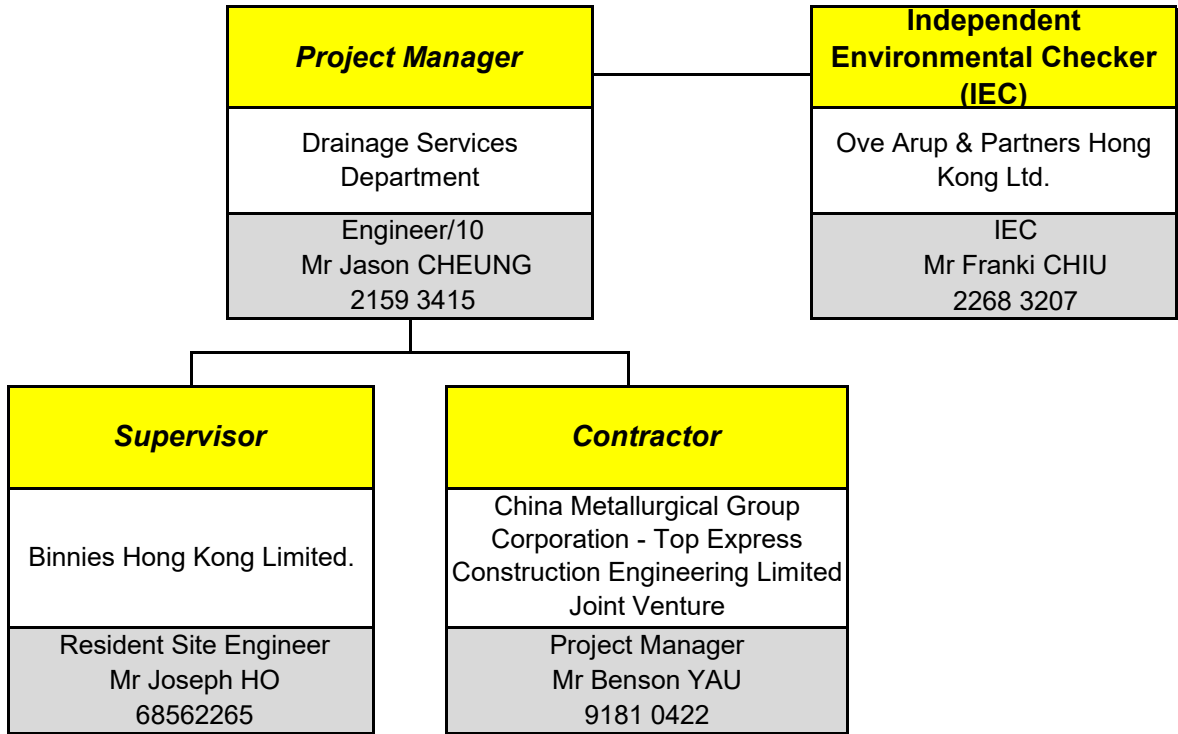
Environmental Permit No.: EP-523/2016
環境許可證編號: EP-523/2016

Project Title - Proposed Sewage Pumping Station and Dry Weather Flow Interceptor at Cherry Street Box Culvert
工程項目名稱 - 櫻桃街箱形雨水渠擬建污水泵房及旱流截取設施

Figure 1 - Project Location Plan
圖 1 - 工程項目位置圖

Appendix A

Project Organization and Contacts of Key Personnel



———— Contractual Relationship