



Airport City Link

Monthly EM&A Report for September 2024

October 2024

Mott MacDonald
3/F Manulife Place
348 Kwun Tong Road
Kwun Tong
Kowloon
Hong Kong

T +852 2828 5757
mottmac.hk

Airport Authority Hong Kong

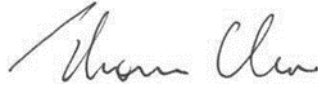
Airport City Link

Monthly EM&A Report for September 2024

October 2024

**This Submission of Construction Phase Monthly
Environmental Monitoring and Audit (EM&A) Report for September 2024
has been reviewed and certified by
the Environmental Team Leader (ETL) in accordance with
Condition 3.5 of Environmental Permit No. EP-581/2020 and
Section 11.2 of the EM&A Manual of the Project.**

Certified by:



Ir Thomas Chan
Environmental Team Leader (ETL)
Mott MacDonald Hong Kong Limited

Date

8 October 2024

Your Ref: -
Our Ref: 60664934/C/FYW2410081

By Email

Capital Works Management Department
Level 6, HKIA Tower 2,
15 Cheong Tat Road,
Hong Kong International Airport,
Lantau, Hong Kong

Attn: Collin Chan (Manager, Civil)

8 October 2024

Dear Sir,

Contract C21C02 – Independent Environmental Checker Consultancy Services for Airport City Link
Monthly Environmental and Audit (EM&A) Report for September 2024

Reference is made to the Environmental Team's submission of Monthly EM&A Report for September 2024 in accordance with Condition 3.5 of the Environmental Permit (No: EP-581/2020) and Section 11.2 of the EM&A Manual of the Project certified by the ET Leader on 8 October 2024.

We would like to inform you that we have verified on the captioned submission in accordance with the requirement stipulated in Condition 1.9 of EP-581/2020.

Should you have any queries, please feel free to contact the undersigned at 3922 9366.

Yours faithfully,
AECOM Asia Co. Ltd.



Y W Fung
Independent Environmental Checker

Contents

Executive summary	4
1 Introduction	6
1.1 Background	6
1.2 Project Organisation	6
1.3 Construction Works Programme and Construction Works Area	7
1.4 Construction Works undertaken during the Reporting Period	7
2 Water Quality	8
2.1 Baseline Water Quality Monitoring	8
2.2 Impact Water Quality Monitoring	8
2.2.1 Monitoring Requirement	8
2.2.2 Monitoring Locations	8
2.2.3 Monitoring Parameters	9
2.2.4 Monitoring Schedule for the Reporting Period	9
2.2.5 Monitoring Equipment	9
2.2.6 Maintenance and Calibration of In-situ Instruments	9
2.2.7 Laboratory Measurement / Analysis	10
2.3 Event and Action Plan	10
2.3.1 Action and Limit Levels	10
2.3.2 Event and Action Plan	10
2.4 Post-Construction Water Quality Monitoring	10
2.4.1 Monitoring Requirement, Locations and Parameters	10
2.4.2 Monitoring Schedule for the Reporting Period	11
2.5 Water Quality Monitoring Results	11
2.5.1 Impact Water Quality Monitoring	11
2.5.2 Post-Construction Water Quality Monitoring	11
2.6 Conclusion	11
3 Environmental Site Inspection and Audit	12
3.1 Environmental Site Inspection	12
3.2 Advice on the Solid and Liquid Waste Management Status	14
3.3 Implementation Status of Environmental Mitigation Measures	14
3.4 Summary of Exceedance of the Environmental Quality Performance Limit	14
3.5 Summary of Complaints, Notifications of Summons and Successful Prosecutions	15
4 Future Key Issues	16
4.1 Construction Programme for the Coming Month	16
4.2 Environmental Site Inspection and Monitoring Schedule for the Next Reporting Period	16

Figure

Figure 2.1 Water Quality Monitoring Locations

Appendices

Appendix A. Project Organisation

Appendix B. Construction Works Programme

Appendix C. Construction Works Area

Appendix D. Environmental Site Inspection and Monitoring Schedule

Appendix E. Event and Action Plan

Appendix F. Waste Flow Table

Appendix G. Status of Environmental Permits and Licences

Appendix H. Environmental Mitigation Measures Implementation Status

Tables

Table 1.1: Contact Information of Key Personnel	6
Table 2.1: Locations of Marine Water Quality Monitoring Stations	8
Table 2.2: Impact Water Quality Monitoring Equipment	9
Table 2.3: Derived Action and Limit Levels	10
Table 3.1: Summary of Site Inspections and Recommendations	12
Table 3.2: Statistics on Environmental Complaints, Notifications of Summons and Successful Prosecutions	15
Table 4.1: Construction Activities for the Next Reporting Period	16

Executive summary

In July 2020, a Project Profile (PP) (Register No.: PP-606/2020) of the Airport City Link (ACL) (hereinafter as “the Project”) was submitted for the application for permission to apply directly for an Environmental Permit (EP), which was approved by Environmental Protection Department (EPD) in August 2020. The EP of the Project (EP No.: EP-581/2020) was obtained in October 2020.

On 10 June 2021, Mott MacDonald Hong Kong Limited (MMHK) was commissioned by Airport Authority Hong Kong (AAHK) to provide Environmental Team (ET) consultancy services for the implementation of an Environmental Monitoring and Audit (EM&A) programme of the Project in accordance with the EP requirements throughout the Pre-construction, Construction and Post-construction phases.

The construction phase EM&A programme of the Project started on 26 July 2022. The construction of marine section was commenced on 26 July 2022, while the construction of the land section was commenced on 20 February 2023.

This is the 26th Monthly EM&A Report for the construction phase of the Project which summaries findings of the EM&A programme during the reporting period from 1 to 30 September 2024.

Key Construction Works in the Reporting Period

A summary of construction activities undertaken during the reporting period is presented below:

Marine Section

- Plant mobilization and material delivery for works
- Bridge deck construction works

Land Section

- Construction of pile cap
- Construction of deck
- Erection of temporary platform / working platform
- Construction of portal
- Construction of column
- Building
- Construction of crosshead and segment on pier
- Construction of form traveller

Environmental Monitoring and Audit Progress

The monthly EM&A programme was undertaken by ET in accordance with the approved EM&A Manual. A summary of the monitoring activities during the reporting period is presented below:

Table I: Summary Table for EM&A Activities in the Reporting Period

EM&A Activities	Number of Sessions
Weekly environmental site inspections (Marine Section)	4
Weekly environmental site inspections (Land Section)	5

Breaches of Action and Limit Levels

Water Quality

The post-construction water quality monitoring has been completed and the results for dissolved oxygen (DO), turbidity and suspended solids (SS) will be reported in the Final EM&A Review Report under this Project.

Complaint Log

There was no complaint in relation to the environmental impact received during the reporting period.

Notifications of Summons and Successful Prosecutions

There was no notifications of summons or successful prosecutions received during this reporting period.

Reporting Changes

There was no reporting change during the reporting period.

Future Key Issues

The future key issues to be undertaken in the upcoming month are:

Marine Section

- Plant mobilization and material delivery
- Bridge deck construction works

Land Section

- Construction of pile cap
- Construction of deck
- Erection of temporary platform / working platform
- Construction of portal
- Construction of column
- Building
- Construction of crosshead and segment on pier
- Construction of form traveller

1 Introduction

1.1 Background

In July 2020, a Project Profile (PP) (Register No.: PP-606/2020) of the Airport City Link (ACL) (hereinafter as “the Project”) was submitted for the application for permission to apply directly for an Environmental Permit (EP), which was approved by Environmental Protection Department (EPD) in August 2020. The EP of the Project (EP No.: EP-581/2020) was obtained in October 2020.

The Project is situated between the Airport Island and Hong Kong Port (HKP) Island, at the south of existing SkyPier on the Airport Island. To enhance vehicular mobility and walkability between HKP Island and the SKY CITY, the Project serves as a connection bridge providing shuttle services and pedestrian pathway.

The construction for the Project consists of a marine section in a marine area between the Airport Island and HKP Island, and a land section on the Airport Island and HKP Island. The connection bridge comprises of approximately 400m long marine section and 450m long land section. The construction works of marine section will be carried out by marine works Contractor, while the construction works of land section will be carried out by land works Contractor.

On 10 June 2021, Mott MacDonald Hong Kong Limited (MMHK) was commissioned by Airport Authority Hong Kong (AAHK) to provide Environmental Team (ET) consultancy services for the implementation of an Environmental Monitoring and Audit (EM&A) programme in accordance with the EP requirements throughout the Pre-construction, Construction and Post-construction phases.

The construction phase EM&A programme of the Project started on 26 July 2022. The construction of marine section was commenced on 26 July 2022, while the construction of the land section was commenced on 20 February 2023.

This is the 26th Monthly EM&A report summarising the key findings of the construction phase EM&A programme from 1 to 30 September 2024 (the reporting period) and is submitted to fulfil requirements in Condition 3.5 of EP and Section 11.2 of EM&A Manual of the Project.

1.2 Project Organisation

The organisation chart and lines of communication with respect to the on-site environmental management structure of the key personnel are shown in **Appendix A**. The key personnel contact names and numbers are summarized in **Table 1.1**.

Table 1.1: Contact Information of Key Personnel

Party	Position	Name	Telephone
Project Manager's Representative (Airport Authority Hong Kong)	Senior Project Engineer, Environment	Becky Yan	2183 2773
Environmental Team (ET) (Mott MacDonald Hong Kong Limited)	Environmental Team Leader	Thomas Chan	2828 5967
	Deputy Environmental Team Leader	Gary Chow	2828 5874

Party	Position	Name	Telephone
Independent Environmental Checker (IEC) (AECOM Asia Company Limited)	Independent Environmental Checker	Y W Fung	3922 9366
	Deputy Independent Environmental Checker	Lemon Lam	3922 9381
Main Contractor – Marine Section (Gammon Engineering & Construction Company Limited)	Senior Project Manager	Brian Ho	9041 7535
	Environmental Officer	Ariana Chan	6449 3086
Main Contractor – Land Section (China State Construction Engineering (HK) Ltd.)	Project Manager	Kingsley Chiang	9424 8437
	Assistant Environmental Officer	Jenny Yuen	5202 3043

1.3 Construction Works Programme and Construction Works Area

The construction phase EM&A programme of the Project started on 26 July 2022. The construction of marine section was commenced on 26 July 2022, while the construction of the land section was commenced on 20 February 2023.

The construction works programme and the construction works area of the Project are shown in **Appendix B** and **Appendix C** respectively.

1.4 Construction Works undertaken during the Reporting Period

A summary of construction activities undertaken during this reporting period is presented below:

Marine Section

- Plant mobilization and material delivery for works
- Bridge deck construction works

Land Section

- Construction of pile cap
- Construction of deck
- Erection of temporary platform / working platform
- Construction of portal
- Construction of column
- Building
- Construction of crosshead and segment on pier
- Construction of form traveller

2 Water Quality

2.1 Baseline Water Quality Monitoring

As stipulated in the EM&A Manual, the construction activities under sea water level for the Project will commence in a month after completion of that of Intermodal Transfer Terminal Bonded Vehicular Bridge (ITT-BVB). Therefore, it is likely that the period for baseline monitoring would overlap with the construction activities under sea water level of ITT-BVB, which may influence the baseline water quality for the Project.

Since the baseline monitoring of ITT-BVB project has been carried out at the same proposed baseline monitoring locations of the Project during 15 August 2019 – 10 September 2019, and 28 November 2019 – 24 December 2019 covering both dry and wet seasons, which was carried out before any marine construction activities in the vicinity of the Project. Hence, the baseline monitoring data from ITT-BVB would be the most recent and representative to the baseline condition of the water quality in the vicinity of the Project without any interference. Thus, the baseline monitoring data from ITT-BVB would be adopted for the Project.

ET submitted the baseline monitoring report of the Project on 12 November 2021 and EPD expressed no comment on 24 November 2021.

2.2 Impact Water Quality Monitoring

2.2.1 Monitoring Requirement

The impact water quality monitoring was conducted three days per week at mid-flood and mid-ebb tides, at 5 water quality monitoring stations when there are marine works below seawater level of the Project. Samples were taken at three depths, namely, 1m below water surface, mid-depth and 1m above sea bed, except where the water depth less than 6m, the mid-depth station was omitted. For locations with water depth less than 3m, only the mid-depth station was monitored. Duplicate in-situ measurements and water samples were collected from each independent monitoring event for all parameters to ensure a robust statistically interpretable dataset.

2.2.2 Monitoring Locations

The water quality monitoring was conducted at three locations in the sea channel between the HKIA and the HKBCF (M1, M2 and M3) and two control stations (C1 and C2), locations are shown in **Figure 2.1** and summarized in **Table 2.1**.

Table 2.1: Locations of Marine Water Quality Monitoring Stations

ID	Monitoring Station	Easting	Northing
M1	Impact Station	812423	819635
M2 ⁽¹⁾	Impact Station	812629	819845
M3 ⁽²⁾	Impact Station	812586	820069
C1	Control Station - West	812419	820670
C2	Control Station - East	813072	820595

Notes:

- As updated in the baseline monitoring report, the water quality monitoring at M2 station was shifted to bring it closer to the Project site and away from the SkyPier ferry movements for better representation.

2. As updated in the baseline monitoring report, the water quality monitoring at M3 station was shifted to the location near the seawater intake of HKBCF to better represent the potential water quality impacts at the nearby sensitive receiver

2.2.3 Monitoring Parameters

For the 3 impact stations (M1 to M3) and 2 control stations (C1 and C2), monitoring of DO, DO%, pH, temperature, turbidity, salinity, SS and water depth were undertaken.

Other relevant data were also recorded, including monitoring location, time, tidal stages, weather conditions and any special phenomena or work during the monitoring.

2.2.4 Monitoring Schedule for the Reporting Period

With the completion of marine works below seawater level on 15 December 2023, the impact water quality monitoring was terminated after 15 December 2023. Therefore, no impact monitoring was scheduled for this reporting month and no impact monitoring results are reported in this report.

2.2.5 Monitoring Equipment

Water samples for all monitoring parameters were collected, stored, preserved and analysed according to the Standard Methods, APHA 21st ed. and/or other methods as agreed by the EPD. In-situ measurements at monitoring locations including dissolved oxygen (DO), dissolved oxygen saturation (DO%), pH, temperature, turbidity, salinity and water depth were collected using the equipment listed in **Table 2.2**.

Water samples for suspended solids (SS) analysis were stored in suitable containers provided by the HOKLAS laboratory with no preservative added, packed in ice (cooled to 4°C without being frozen) and delivered to the HOKLAS laboratory as soon as possible after collection.

Table 2.2: Impact Water Quality Monitoring Equipment

Equipment	Brand and Model	Quantity
Water Sampler	Van Dorn Water Sampler	-
Monitoring Position Equipment (measurement of DGPS)	Garmin eTrex 20x	-
Water Depth Detector (measurement of water depth)	Garmin STRIKER™ Series	-
Multifunctional Meter (measurement of DO, DO%, temperature, turbidity, salinity and pH)	YSI ProDSS (Multiparameter Sampling Instrument)	-

2.2.6 Maintenance and Calibration of In-situ Instruments

In-situ monitoring instruments for water quality parameters were checked, calibrated and certified by a laboratory accredited under HOKLAS before use. Responses of sensors and electrodes were checked with certified standard solutions before each use.

Wet bulb calibration for DO measurement was carried out before commencement of monitoring and after completion of all measurements each day. The turbidity meter was calibrated in order to establish the relationship between NTU units and the levels of suspended solids. A zero check in distilled water was performed with the turbidity probe at least once per monitoring day. The probe was then calibrated with a solution of known NTU. Standard buffer solutions of at least pH 7 and pH 10 was used for calibration of the pH instrument before and after use on each monitoring day.

2.2.7 Laboratory Measurement / Analysis

Analysis of SS was conducted in a HOKLAS accredited laboratory, ALS Technichem (HK) Pty Ltd (Reg. No. HOKLAS 066). Sufficient water samples were collected at each of the control stations and impact stations for carrying out the laboratory SS determination.

The SS determination works started within 24 hours after collection of the water samples. The analysis followed the APHA 2540D analytical method with a detection limit of 1 mg/L.

2.3 Event and Action Plan

2.3.1 Action and Limit Levels

The Action and Limit Levels for the impact monitoring stations were extracted from Table 2.8 of the Baseline Monitoring Report of ITT-BVB. The derived Action and Limit Levels are summarized in **Table 2.3**.

Table 2.3: Derived Action and Limit Levels

Parameters	Action Level	Limit Level
Impact Stations M1 and M2		
DO in mg/L		
Surface & Middle	4.3	4.0
Bottom	3.8	3.0
SS in mg/L		
	14.2	17.4
	AND	AND
	120% of upstream control station at the same tide of the same day	130% of upstream control station at the same tide of the same day
Turbidity in NTU		
	11.0	16.3
	AND	AND
	120% of upstream control station at the same tide of the same day	130% of upstream control station at the same tide of the same day
Impact Station M3		
SS in mg/L	33	42

Notes:

1. For DO measurement, non-compliance occurs when the monitoring result is lower than the limits.
2. For parameters other than DO, non-compliance of water quality occurs when the monitoring result is higher than the limits.
3. Depth-averaged results are used unless specified otherwise.
4. Impact station M3 is represents the impact station SR1A of "Expansion of Hong Kong International Airport into a Three-Runway System". The AL levels for M3 in **Table 2.3** is referencing the agreed and adopted AL levels of SR1A from the Updated EM&A Manual for Expansion of Hong Kong International Airport into a Three-Runway System.

2.3.2 Event and Action Plan

In the event of water quality monitoring results at impact stations exceeding the Action and/or Limit levels for water quality as defined in **Table 2.3**, the actions in accordance with the Event and Action Plan presented in **Appendix E** shall be carried out.

2.4 Post-Construction Water Quality Monitoring

2.4.1 Monitoring Requirement, Locations and Parameters

The post-construction water quality monitoring of the Project was scheduled to be conducted after completion of the construction activities under seawater level of the Project.

On 24 November 2023, notification was made to the EPD on the termination of Impact Water Quality Monitoring and implementation of post-construction monitoring, with further update sent on 5 December 2023. With the completion of marine works below seawater level on 15 December 2023, the impact water quality monitoring was terminated after 15 December 2023 and the post-construction water quality monitoring was commenced on 16 December 2023 and completed on 12 January 2024.

The monitoring location and parameters are in the same manner as the impact monitoring, and details could be referred to **Section 2.2**.

2.4.2 Monitoring Schedule for the Reporting Period

The post-construction water quality monitoring was commenced on 16 December 2023 and completed on 12 January 2024.

2.5 Water Quality Monitoring Results

2.5.1 Impact Water Quality Monitoring

The impact water quality monitoring was terminated after 15 December 2023.

2.5.2 Post-Construction Water Quality Monitoring

The post-construction water quality monitoring has been completed and the results for DO, turbidity and SS will be reported in the Final EM&A Review Report under this Project.

2.6 Conclusion

The post-construction water quality monitoring has been completed.

While the marine works under seawater level of the Project have been completed, the Contractor was reminded to implement and maintain all mitigation measures during weekly site inspection and regular environmental management meetings. These include maintaining mitigation measures properly as recommended in the EM&A Manual.

3 Environmental Site Inspection and Audit

3.1 Environmental Site Inspection

Site inspections for marine and land section were carried out by ET on a weekly basis to monitor the implementation of proper environmental pollution control mitigation measures for the Project. Key observations were recorded in the site inspection checklist and passed to the Contractors together with the appropriate recommended mitigation measures where necessary.

Marine Section

During the reporting period, site inspections were carried out on 4, 10, 16 and 24 September 2024 for marine section. Joint IEC site inspection for marine section was carried out on 16 September 2024. Monthly landscape and visual site audit was carried out on 16 September 2024.

Land Section

During the reporting period, site inspections were carried out on 2, 9, 16, 23 and 30 September 2024 for land section. Joint IEC site inspection for land section was carried out on 16 September 2024. Monthly landscape and visual site audit was carried out on 16 September 2024.

Key observations and reminders during the site inspections and landscape and visual site audit are described in **Table 3.1**.

Table 3.1: Summary of Site Inspections and Recommendations

Marine Section			
Inspection Date	Key Observations / Reminders	Recommendations / Actions	Close-Out Date
10 Sep 2024	No noise emission label was being displayed on the handheld breaker.	The Contractor should ensure all air compressor and handheld percussive breaker have a valid noise emission label displayed.	16 Sep 2024
16 Sep 2024	A chemical container was observed without drip tray at Pier 6.	The Contractor should provide a drip tray for the chemical container to avoid any potential spillage.	24 Sep 2024
Land Section			
Inspection Date	Key Observations / Reminders	Recommendations / Actions	Close-Out Date
2 Sep 2024	Idled stockpile was observed.	The Contractor should implement proper dust mitigation measures (e.g. water spraying or covering with tarpaulin) to the idle stockpiles to suppress the fugitive dust emission.	9 Sep 2024
2 Sep 2024	The exposed site area was observed dry and dust nuisance was observed during excavator movement.	The Contractor should provide regular water spraying on the exposed site area for dust suppression.	9 Sep 2024
2 Sep 2024	No drip tray was provided for the chemical containers.	The Contractor should provide drip trays for the chemical containers to prevent any potential spillage.	9 Sep 2024

Land Section			
2 Sep 2024	Bunding for the site area was not properly closed.	The Contractor should reinstate the bunding to avoid muddy runoff from the site discharged into public area.	9 Sep 2024
2 Sep 2024	Unloading dusty materials without mitigation measures for dust suppression.	The Contractor should implement proper dust mitigation measures (e.g. water spraying) to the idle stockpiles to unloading works to suppress the fugitive dust emission.	9 Sep 2024
2 Sep 2024	The existing wastewater treatment capacity provided may not be sufficient for the current construction works. (Reminder)	The contractor was reminded to review the wastewater treatment capacity on site and ensure all effluent generated during the construction works should be properly treated by the wastewater treatment facility to fulfil the existing license requirement.	2 Sep 2024
9 Sep 2024	Idled water pipe was deposited on the ground and was not connected to wastewater treatment facility.	The Contractor should remove the idled water pipe and ensure all wastewater are diverted to wastewater treatment facility for treatment prior to discharge.	16 Sep 2024
9 Sep 2024	Wastes including construction debris and general refuse were improperly disposed onto the ground.	The Contractor should clean up the wastes and properly dispose of them in waste skips to maintain good housekeeping onsite.	16 Sep 2024
9 Sep 2024	Sand material was observed deposited into the gully.	The Contractor should clean up the sand materials and cover the gully to prevent any sand and silt from entering the public drainage system.	16 Sep 2024
9 Sep 2024	Potential for silty runoff generation from work site during raining days. (Reminder)	The Contractor was reminded to provide mitigation measure to prevent any silty runoff to the public road under rainy weather.	9 Sep 2024
9 Sep 2024	Loose debris should be regularly cleaned at work site. (Reminder)	The Contractor was reminded to provide regular cleaning of debris to maintain good housekeeping onsite.	9 Sep 2024
16 Sep 2024	Dusty tyre trails were observed at the vehicular exit.	The Contractor should provide cleaning for the public road and proper wheel washing at the vehicular exit to ensure that no earth, mud or debris is deposited on public roads.	23 Sep 2024
16 Sep 2024	Sand material was observed deposited into the gully.	The Contractor should clean up the sand materials and cover the gully to prevent any sand and silt from entering the public drainage system.	23 Sep 2024
16 Sep 2024	Sand material was observed deposited into the U channel.	The Contractor should clean up the sand materials to prevent any sand and silt from entering the public drainage system.	23 Sep 2024
30 Sep 2024	The gullies and U channels were not properly covered as protection measures.	The Contractor should cover the gullies and U channels to prevent any silty and construction materials runoff from entering the public drainage system.	Ongoing
30 Sep 2024	Oil stain was observed underneath the breaker head.	The Contractor should clear the oil stain and provide preventive measure for holding the breaker head.	Ongoing

Land Section			
30 Sep 2024	No drip tray was provided for the chemical containers.	The Contractor should provide drip trays for the chemical containers to prevent any potential spillage.	Ongoing
30 Sep 2024	No noise emission label was being displayed on the handheld breaker.	The Contractor should ensure all air compressor and handheld percussive breaker have a valid noise emission label displayed.	Ongoing
30 Sep 2024	Water control measures should be enhanced to prevent disturbance to the public (Reminder)	The Contractor was reminded to enhance water control measures (e.g. sandbag bundings) to prevent any silty runoff from entering the public drainage system and the public road.	30 Sep 2024
30 Sep 2024	General refuse should be properly stored on site. (Reminder)	The Contractor was reminded to provide proper storage for general refuse and maintain good housekeeping on site.	30 Sep 2024

3.2 Advice on the Solid and Liquid Waste Management Status

The Contractors were registered as chemical waste producers for the Project. Construction and demolition (C&D) material sorting was carried out on site. Sufficient numbers of receptacles were provided for general refuse collection and sorting. Excavated inert C&D materials were reused to minimise the disposal of C&D waste to public fill. The Contractors were reminded to maintain on site waste sorting and recording system and maximize reuse / recycling of C&D wastes, whenever these are generated.

The monthly summary of waste flow table for marine and land section are detailed in **Appendix F**.

The valid environmental licenses and permits for the Project during the reporting period are summarized in **Appendix G**.

3.3 Implementation Status of Environmental Mitigation Measures

In response to the site audit findings, the Contractors carried out corrective actions.

A summary of the environmental mitigation measures implementation status is presented in **Appendix H**. Environmental Mitigation Measures Implementation Status. Necessary mitigation measures were implemented properly, observations and reminders were issued to the Contractors where actions were taken by the Contractors to rectify the identified issues.

3.4 Summary of Exceedance of the Environmental Quality Performance Limit

Water Quality

The post-construction water quality monitoring has been completed on 12 January 2024 and the results for DO, turbidity and SS will be reported in the Final EM&A Review Report under this Project.

3.5 Summary of Complaints, Notifications of Summons and Successful Prosecutions

Complaint Log

There was no complaint received in relation to the environmental impact during the reporting period.

Notifications of Summons or Status of Prosecution

There was no notification of summons or prosecutions received during the reporting period.

Cumulative Statistics

Statistics on complaints, notifications of summons and successful prosecutions are summarized in **Table 3.2**.

Table 3.2: Statistics on Environmental Complaints, Notifications of Summons and Successful Prosecutions

Reporting Period	Environmental Complaints	Notifications of Summons	Successful Prosecutions
This reporting period (September 2024)	0	0	0
From commencement date of construction to end of reporting period	0	0	0

4 Future Key Issues

4.1 Construction Programme for the Coming Month

As informed by the Contractors, the major construction activities for the next reporting period (October 2024) are summarized in **Table 4.1**.

Table 4.1: Construction Activities for the Next Reporting Period

Marine Section	
Period	Description of Activities
October 2024	<ul style="list-style-type: none"> Plant mobilization and material delivery Bridge deck construction works
Land Section	
Period	Description of Activities
October 2024	<ul style="list-style-type: none"> Construction of pile cap Construction of deck Erection of temporary platform / working platform Construction of portal Construction of column Building Construction of crosshead and segment on pier Construction of form traveller

4.2 Environmental Site Inspection and Monitoring Schedule for the Next Reporting Period

The tentative schedule for weekly site inspection for the next reporting period is provided in **Appendix D**.

No water quality monitoring is scheduled for the next reporting period, with all post-construction monitoring completed.

5 Conclusions

General

The construction works for the Project commenced on 26 July 2022. The ET of the Project has undertaken environmental site inspections and water quality monitoring under the construction phase EM&A programme during the reporting period.

Water Quality Monitoring

The post-construction water quality monitoring has been completed on 12 January 2024 and the results for DO, turbidity and SS will be reported in the Final EM&A Review Report under this Project.

Environmental Site Inspections

Environmental site inspections were carried out 4 times for marine section and 5 times for land section during the reporting period. Recommendations on remedial actions were given to the Contractors for the deficiencies identified during the site inspections.

Complaint Log

There was no complaint received in relation to the environmental impact during the reporting period.

Reporting Changes

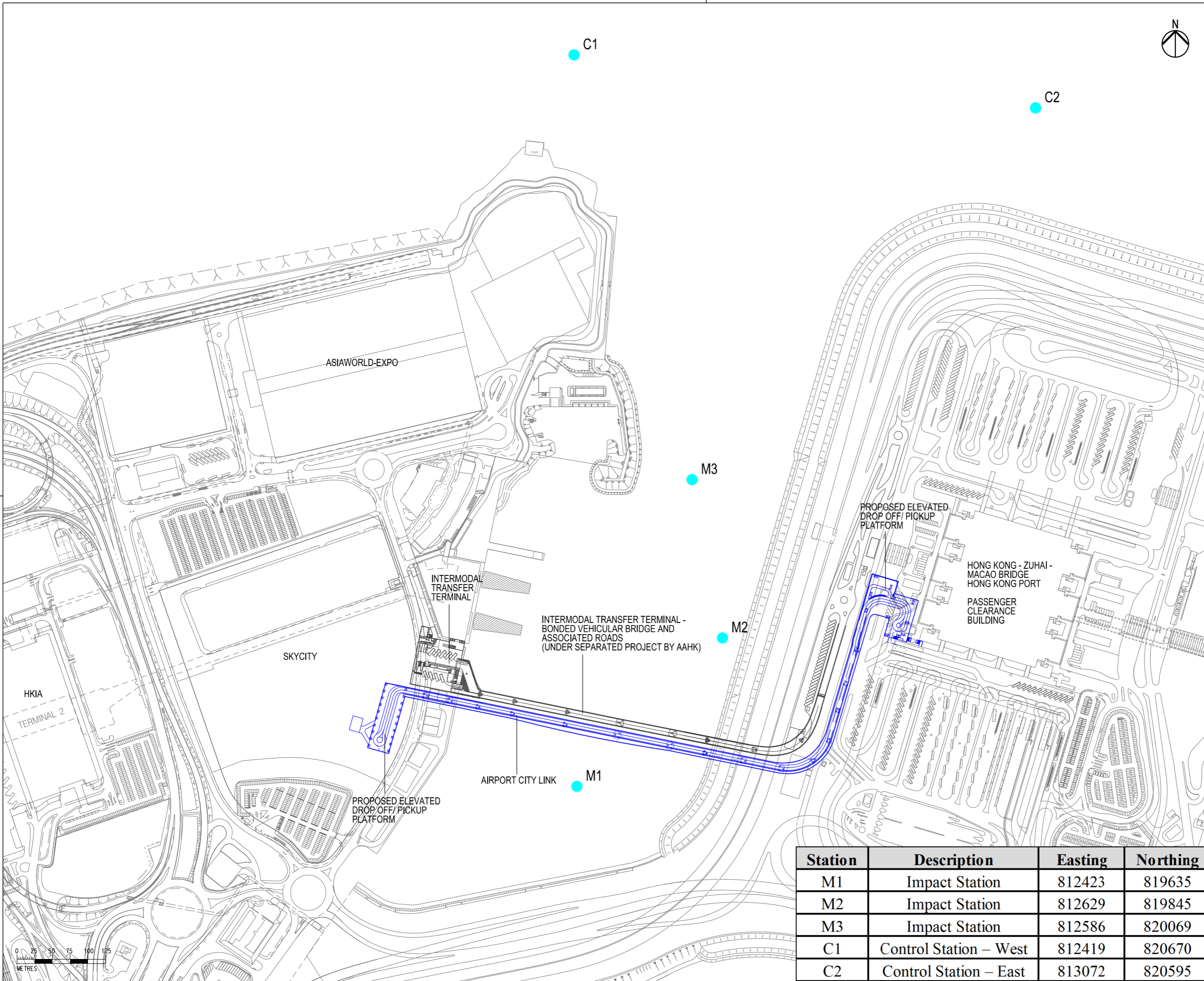
There was no reporting change during the reporting period.

Notifications of Summons and Successful Prosecutions

There was no notification of summons or successful prosecutions received during the reporting period.

Figure

Figure 2.1 Water Quality Monitoring Locations



LEGEND
 PROPOSED ALIGNMENT
 WATER QUALITY MONITORING STATION

Rev.	Date	Description	Checked



Hong Kong International Airport

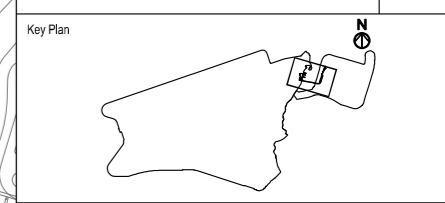
Consultant
 MOTT MACDONALD

Consultant's Signatures for Approval _____ Date _____

Design Supervisor _____

Checkers _____

Authorised Representative _____

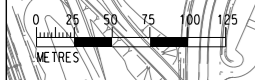


Title

LOCATION OF WATER QUALITY MONITORING STATIONS

FIGURE 2.1

Station	Description	Easting	Northing
M1	Impact Station	812423	819635
M2	Impact Station	812629	819845
M3	Impact Station	812586	820069
C1	Control Station – West	812419	820670
C2	Control Station – East	813072	820595

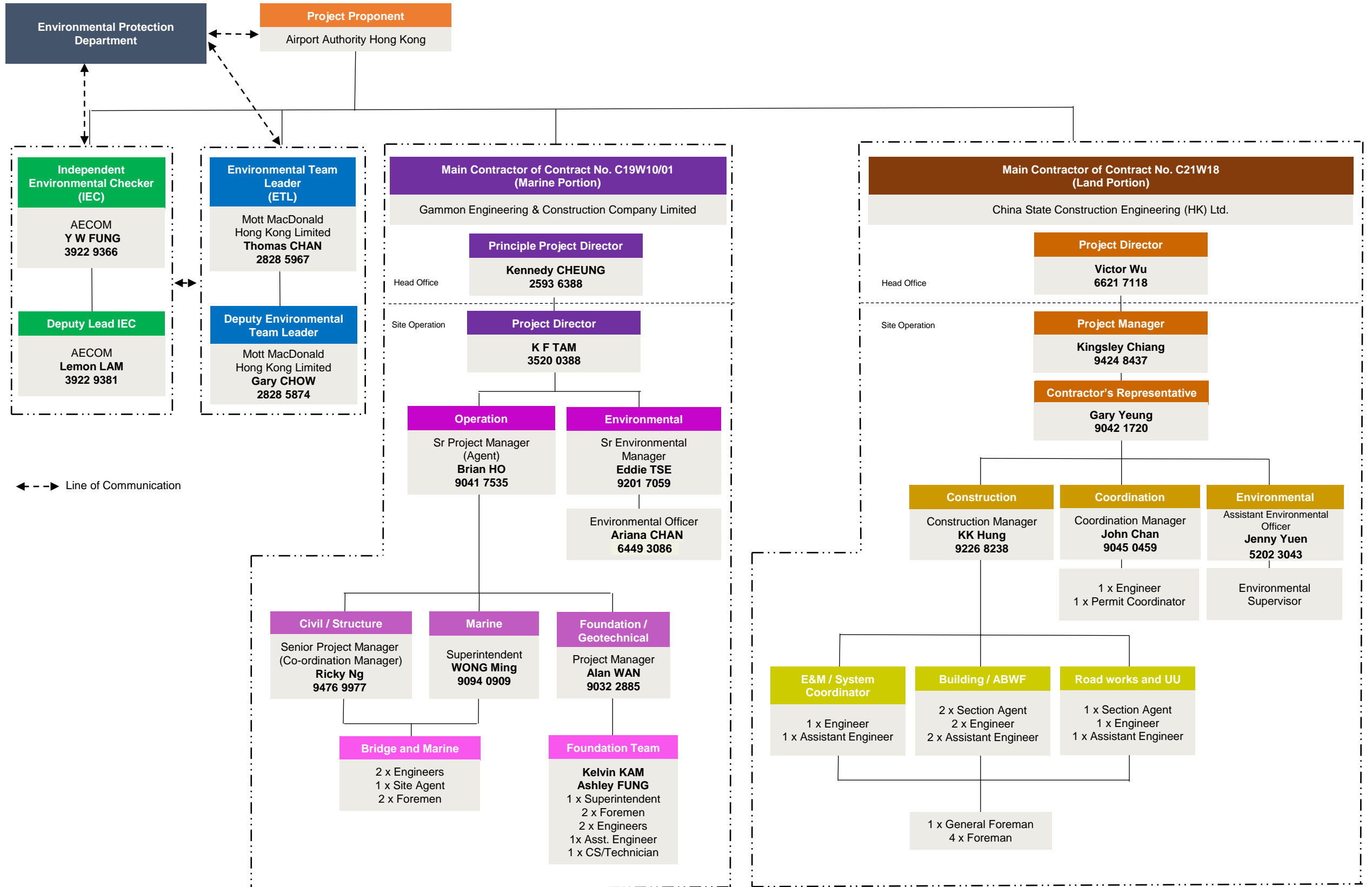


Originator	Location	Discipline	Type	Dwg Sequence No.
Status	DESIGN	Scale	1:5000 (A3)	Rev. A

Appendices

Appendix A. Project Organisation

Management Organizations for EP Condition 2.3



Appendix B. Construction Works Programme

Marine Section

C19W10/01 - ACL - Mitigation Programme Rev.D Updated as of 30 Sep 2024

Activity ID	Activity Name	Orig Dur	BL Project Start	BL Project Finish	Start	Finish	Total Float	Remaining Duration	Physical % Complete	2024				
										Sep 32	Oct 33	Nov 34	Dec 35	
C19W10/01 - ACL - Mitigation Programme Rev.D Updated as of 30 Sep 2024														
Contract Dates														
Project Key Date														
19W10.A.C0W745	Completion of the Works	0		29-Mar-24		29-Oct-24*	-183	0	0%					
Statutory Submission														
19W10.A.C0W960	Submission of Final Version of O&M Manuals and As Constructed Drawings (as per APS AP p	0	28-Feb-24		30-Sep-24*		-163	0	0%					
19W10.A.C0W985	Submission of Final Version of Documents for BA14 Submission	0	28-Feb-24		30-Sep-24*		-163	0	0%					
19W10.A.C0W975	Final Version of O&M Manuals and As Constructed Drawings (as per APS Appendix C3/SA)	0		28-Mar-24		29-Oct-24	-163	0	0%					
19W10.A.C0W965	Submissions and Approval of Q&M Manuals and As-Cosntructred Drawings	23	28-Feb-24	28-Mar-24	30-Sep-24	29-Oct-24	-163	23	0%					
19W10.A.C0W995	Submissions and Approval of Final Version of Documents for BA14 Submission	23	28-Feb-24	28-Mar-24	30-Sep-24	29-Oct-24	-163	23	0%					
19W10.A.C0W998	Final Version of Documents and ready for BA14 Submission by Others	0		28-Mar-24		29-Oct-24	-163	0	0%					
Marine Viaduct Erection														
ACL P4 Span														
19W10.U.SD482	Grouting C-tendon Between P4 & P5	4	25-Jan-24	29-Jan-24	30-Aug-24 A	30-Aug-24 A		0	100%					
19W10.U.SD492	Grouting Bottom Tendon Between P4 & P5	2	30-Jan-24	31-Jan-24	31-Aug-24 A	31-Aug-24 A		0	100%					
ACL P7 Span														
19W10.U.SD502	Casting the Stitching Between P6 & P7	7	29-Nov-23	06-Dec-23	22-Aug-24 A	31-Aug-24 A		0	100%					
19W10.U.SD512	Stressing P6 & P7 Bottom Tendon	2	07-Dec-23	08-Dec-23	13-Sep-24 A	14-Sep-24 A		0	100%					
19W10.U.SD522	Grouting C-tendon Between P6 & P7	4	09-Dec-23	13-Dec-23	15-Sep-24 A	18-Sep-24 A		0	100%					
19W10.U.SD532	Grouting Bottom Tendon Between P6 & P7	2	14-Dec-23	15-Dec-23	23-Sep-24 A	24-Sep-24 A		0	100%					
ACL P3 Span														
19W10.U.SD562	Grouting C-tendon Between P3 & P4	4	07-Feb-24	14-Feb-24	30-Aug-24 A	30-Aug-24 A		0	100%					
19W10.U.SD572	Grouting Bottom Tendon Between P3 & P4	2	15-Feb-24	16-Feb-24	31-Aug-24 A	31-Aug-24 A		0	100%					
ACL P8 Span														
19W10.U.SD592	Stressing P7-P8 Bottom Tendon	2	23-Jan-24	24-Jan-24	21-Sep-24 A	30-Sep-24 A		0	100%					
19W10.U.SD602	Grouting C-tendon Between P7 & P8	4	25-Jan-24	29-Jan-24	30-Sep-24	04-Oct-24	-163	4	0%					
19W10.U.SD612	Grouting Bottom Tendon Between P7 & P8	2	30-Jan-24	31-Jan-24	05-Oct-24	07-Oct-24	-163	2	0%					
Installation of Drainage Pipe														
Main Carriage Drain Inside the Void														
19W10.A.C0W380	P5-P6 Span	5	17-Oct-23	01-Nov-23	23-Sep-24 A	30-Sep-24 A		0	100%					
19W10.A.C0W360	P3-P4 Span	5	17-Feb-24	02-Mar-24	30-Sep-24	04-Oct-24	-167	5	0%					
19W10.A.C0W370	P4-P5 Span	5	01-Feb-24	19-Feb-24	30-Sep-24	04-Oct-24	-167	5	0%					
19W10.A.C0W390	P6-P7 Span	5	16-Dec-23	03-Jan-24	30-Sep-24	04-Oct-24	-167	5	0%					
19W10.A.C0W400	P7-P8 Span	5	01-Feb-24	19-Feb-24	08-Oct-24	12-Oct-24	-174	5	0%					
125mm dia. Drainage Pipe at Walkway														
19W10.A.C0W430	P3-P4 Span	14	07-Feb-24	26-Feb-24	30-Sep-24	15-Oct-24	-171	14	0%					
19W10.A.C0W440	P4-P5 Span	14	25-Jan-24	09-Feb-24	30-Sep-24	15-Oct-24	-171	14	0%					
19W10.A.C0W450	P5-P6 Span	14	06-Oct-23	24-Oct-23	30-Sep-24	15-Oct-24	-171	14	0%					
19W10.A.C0W460	P6-P7 Span	14	09-Dec-23	27-Dec-23	30-Sep-24	15-Oct-24	-171	14	0%					
19W10.A.C0W470	P7-P8 Span	14	25-Jan-24	09-Feb-24	30-Sep-24	15-Oct-24	-171	14	0%					
Installation of Cable Tray Inside the Deck Void (328m)														
19W10.A.C0W520	P5-P6 Span	5	02-Nov-23	09-Nov-23	30-Sep-24	04-Oct-24	-162	5	0%					
19W10.A.C0W500	P3-P4 Span	5	04-Mar-24	11-Mar-24	05-Oct-24	10-Oct-24	-167	5	0%					
19W10.A.C0W510	P4-P5 Span	5	20-Feb-24	27-Feb-24	05-Oct-24	10-Oct-24	-167	5	0%					
19W10.A.C0W530	P6-P7 Span	5	04-Jan-24	11-Jan-24	05-Oct-24	10-Oct-24	-167	5	0%					
19W10.A.C0W540	P7-P8 Span	5	20-Feb-24	27-Feb-24	14-Oct-24	18-Oct-24	-174	5	0%					
Sealing Up the Temporary Opening on Deck														
19W10.A.C0W550	Sealing up the Temporary Opening	1	12-Mar-24	20-Mar-24	01-Sep-24 A	01-Sep-24 A		0	100%					
Viaduct Parapet Erection														
19W10.A.C0W560	P3-P4 Parapet (50m)	12	07-Feb-24	27-Feb-24	26-Sep-24 A	10-Oct-24	-182	10	10%					
19W10.A.C0W580	P5-P6 Parapet (76m)	20	07-Feb-24	05-Mar-24	26-Jul-24 A	12-Oct-24	-174	12	70%					
19W10.A.C0W600	P7-P8 Parapet (50m)	12	07-Feb-24	27-Feb-24	30-Sep-24	12-Oct-24	-180	12	0%					
19W10.A.C0W590	P6-P7 Parapet (76m)	18	28-Feb-24	22-Mar-24	30-Sep-24	19-Oct-24	-180	18	0%					
19W10.A.C0W570	P4-P5 Parapet (76m)	20	28-Feb-24	22-Mar-24	30-Sep-24	22-Oct-24	-182	20	0%					
Top Railing and Road Lighting Plinth														
19W10.A.C0W790	Off-site Fabrication and Delivery of Top Railing	30	06-May-23	20-Dec-23	10-Jul-24 A	10-Sep-24 A		0	100%					

	Actual LOE		Crit Milestone		No Predecessors
	Remaining LOE		Actual Milestone		No Successors
	Actual Work		Project Baseline		
	Remaining Work		Baseline Milestone		
	Critical Remaining Work		Start Constraint		
	Milestone		Finish Constraint		

Project ID: C19W10/01-DWP-D-M312
Three-Month Rolling Programme (as of 30 September 2024)
 Page 1 of 2

Data Date: 30-Sep-24
Printed: 25-Sep-24 13:25
Layout: C19W10/01 ACL 3MR M31
 TASK filter: 3 Mths Rolling.

Date	Revision	Checked	Approved
26-Feb-22	Initial Works Programme	DW	BH
10-May-22	Detailed Works Programme ...	DW	BH
22-Aug-22	Detailed Works Programme ...	DW	RN
31-Mar-23	Detailed Works Programme ...	DW	RN
30-Sep-24	3MRP - Update	DW	BH

C19W10/01 - ACL - Mitigation Programme Rev.D Updated as of 30 Sep 2024

Activity ID	Activity Name	Orig Dur	BL Project Start	BL Project Finish	Start	Finish	Total Float	Remaining Duration	Physical % Complete	2024				
										Sep 32	Oct 33	Nov 34	Dec 35	
19W10.AC0W795	P3-P4 Top Railing and Road Lighting Plinth	5	28-Feb-24	04-Mar-24	11-Oct-24	16-Oct-24	-172	5	0%					
19W10.AC0W815	P5-P6 Top Railing and Road Lighting Plinth	5	06-Mar-24	11-Mar-24	14-Oct-24	18-Oct-24	-174	5	0%					
19W10.AC0W835	P7-P8 Top Railing and Road Lighting Plinth	5	28-Feb-24	04-Mar-24	14-Oct-24	18-Oct-24	-174	5	0%					
19W10.AC0W825	P6-P7 Top Railing and Road Lighting Plinth	5	23-Mar-24	28-Mar-24	21-Oct-24	25-Oct-24	-180	5	0%					
19W10.AC0W805	P4-P5 Top Railing and Road Lighting Plinth	5	23-Mar-24	28-Mar-24	23-Oct-24	28-Oct-24	-182	5	0%					
Erection of Staircase														
19W10.AC0W715	At P4	20	07-Feb-24	08-Mar-24	19-Sep-24 A	16-Oct-24	-172	15	0%					
19W10.AC0W725	At P7	18	01-Feb-24	02-Mar-24	08-Oct-24	28-Oct-24	-182	18	0%					
Fender Installation														
19W10.AC0W935	Fender Installation at P6	10	15-Nov-23	07-Dec-23	30-Sep-24	12-Oct-24	-160	10	0%					
19W10.AC0W945	Fender Installation at P7	10	08-Dec-23	03-Jan-24	14-Oct-24	25-Oct-24	-160	10	0%					
Navigation Aids Installation														
19W10.AC0W885	Navigation Aids Installation	22	05-Feb-24	09-Mar-24	30-Sep-24	28-Oct-24	-162	22	0%					

Actual LOE	Crit Milestone	No Predecessors
Remaining LOE	Actual Milestone	No Successors
Actual Work	Project Baseline	
Remaining Work	Baseline Milestone	
Critical Remaining Work	Start Constraint	
Milestone	Finish Constraint	

Project ID: C19W10/01-DWP-D-M312
Three-Month Rolling Programme (as of 30 September 2024)
 Page 2 of 2

Data Date: 30-Sep-24
Printed: 25-Sep-24 13:25
Layout: C19W10/01 ACL 3MR M31
 TASK filter: 3 Mths Rolling.

Date	Revision	Checked	Approved
26-Feb-22	Initial Works Programme	DW	BH
10-May-22	Detailed Works Programme ...	DW	BH
22-Aug-22	Detailed Works Programme ...	DW	RN
31-Mar-23	Detailed Works Programme ...	DW	RN
30-Sep-24	3MRP - Update	DW	BH

Land Section



Contract C21W18 - Airportcity Link - Land Viaducts at Hong Kong Port and Airport Island

MU26A - 3 Months Rolling Programme (CWPG-A04) DD 30-Sep-24



中國建築工程(香港)有限公司
CHINA STATE CONSTRUCTION ENGRG. (HONG KONG) LTD.

Activity ID	Activity Name	Prog Update CD	Remaining Duration	Start	Finish	Physical % Complete	Job Float	Gantt Chart (2024)
20240930	ACL - CWPG-A04 MU28A critical path reseque'd	624	237	04-Nov-22 A	18-Jul-25	103		
Contract Dates		91	91	30-Sep-24	29-Dec-24	0		
Procurement		624	237	30-Dec-22 A	18-Jul-25	23		
Construction		589	167	04-Nov-22 A	24-Apr-25	173		
KD2 - Complete Viaducts & Platforms, Associated Road Works, Facilities & At-Grade Plant Room		589	167	04-Nov-22 A	24-Apr-25	173		
Sky City Platform		145	100	29-Jul-24 A	28-Jan-25	240		
Sky City Platform - Foundation		68	68	30-Sep-24	19-Dec-24	118		
Sky City Platform - Superstructure		145	100	29-Jul-24 A	28-Jan-25	240		
Sky City Platform - Superstructure - Pile Cap S-P7		13	0	17-Aug-24 A	31-Aug-24 A			
Sky City Platform - Superstructure - Column		54	9	29-Jul-24 A	10-Oct-24	73		
Sky City Platform - Superstructure - Portal Frame (New WBS)		86	56	30-Aug-24 A	05-Dec-24	29		
KD2_SCP_S_1212	Sky City Platform Group 1 - Erect Temporary Portal Frame(Protective Fence) for Cross Beam & Deck Construction	57	42	04-Sep-24 A	19-Nov-24	26%	-28	Sky City Platform Group 1 - Erect Temporary Portal Frame
KD2_SCP_S_1232	Sky City Platform Group 2 - Erect Temporary Portal Frame(Protective Fence) for Cross Beam & Deck Construction	71	56	04-Sep-24 A	05-Dec-24	21%	29	Sky City Platform Group 2 - Erect
Envelope_NB_1	Envelope NB column finish date for linking portal with FS lag	0	0		30-Aug-24 A	100%		Envelope NB column finish date for linking portal with FS lag
Sky City Platform - Superstructure - Main Beam -> Rename to Falsework & Formwork		71	71	18-Oct-24	10-Jan-25	255		
KD2_SCP_S_1190	Group 1 - North Bound - Main Beam (S-C9 to S-C12)	29	29	06-Dec-24	10-Jan-25	0%	255	
KD2_SCP_S_1200	Group 1 - South Bound - Main Beam (S-C3 to S-C6)	25	25	18-Oct-24	15-Nov-24	0%	-28	Group 1 - South Bound - Main Beam (S-C3 to S-C6), Group 1
KD2_SCP_S_1300	Group 2 - South Bound - Main Beam (S-C1 to S-C2) - reserve a small portion not do for Viaduct of A2 to P3 prestressing	29	29	22-Nov-24	25-Dec-24	0%	29	Group 2
KD2_SCP_S_1210	Group 2 - North Bound - Main Beam (S-C7 to S-C8)	29	29	20-Nov-24	23-Dec-24	0%	40	Group 2
KD2_SCP_S_1330	Group 2 - South Bound - Main Beam (S-C1 to S-C2) - Remaining Part which was reserved for viaduct prestressing	9	9	27-Dec-24	07-Jan-25	0%	29	
Sky City Platform - Superstructure - Cross Beam & Deck -> Rename to Main Beam, Cross Beam & Deck		61	61	16-Nov-24	28-Jan-25	-28		
Sky City - Lift LT-01		9	9	30-Sep-24	10-Oct-24	50		
Sky City - Staircase		84	84	30-Sep-24	09-Jan-25	-1		
Sky City Viaduct		119	106	08-Jun-24 A	07-Feb-25	106		
Sky City Viaduct - Superstructure		119	106	08-Jun-24 A	07-Feb-25	106		
Sky City Viaduct - Bridge Deck		56	35	08-Jun-24 A	11-Nov-24	61		
KD2_SCV_S_1170	Sky City Viaduct - Span A2 to P2 - Deck Structure	53	4	24-Jun-24 A	26-Oct-24	25%	61	Sky City Viaduct - Span A2 to P2 - Deck Structure, Sky City Viaduct - Span A2 to P2 - Deck
KD2_SCV_S_1190	Sky City Viaduct - Span P2 to P3 - Deck Structure	35	18	08-Jun-24 A	22-Oct-24	45%	61	Sky City Viaduct - Span P2 to P3 - Deck Structure, Sky City Viaduct - Span P2 to P3 - Deck
KD2_SCV_S_1200	Sky City Viaduct - 5 days Concrete Strength	5	5	28-Oct-24	01-Nov-24	0%	61	Sky City Viaduct - 5 days Concrete Strength, Sky City Viaduct - 5 days Concrete S
KD2_SCV_S_1210	Sky City Viaduct - Prestressing to Bridge Deck From A2 to P3	1	1	02-Nov-24	02-Nov-24	0%	61	Sky City Viaduct - Prestressing to Bridge Deck From A2 to P3, Sky City Viaduct -
KD2_SCV_S_1230	Sky City Viaduct - MJ Installation	7	7	04-Nov-24	11-Nov-24	0%	61	Sky City Viaduct - MJ Installation, Sky City Viaduct - MJ Installation
Sky City Viaduct - Superstructure - Associated Facilities		78	78	04-Nov-24	07-Feb-25	106		
Sky City Viaduct - ABWF for SK-8 to P3		59	59	12-Nov-24	21-Jan-25	73		
HKP Port - Platform		166	109	21-Jun-24 A	11-Feb-25	103		
HKP Platform - Foundation		28	1	27-Jul-24 A	30-Sep-24	24		
HKP Platform - Statutory Submission for Completion		28	1	27-Jul-24 A	30-Sep-24	24		
HKP Platform - Group 5 Completion of Bored Pile (H-P20a, H-P20b, H-P21a, H-P21b)		28	1	27-Jul-24 A	30-Sep-24	24		
HKP Platform - Superstructure		166	109	21-Jun-24 A	11-Feb-25	103		
HKP Platform - Superstructure Portion 1 #->New Deck Zone A		132	87	29-Jul-24 A	13-Jan-25	49		
KD2_HKPP_S_1100	HKP Platform Structure Portion 1 - Portal Frame (Protective Fence) Installation for Beam & Deck Construction	69	16	29-Jul-24 A	15-Oct-24	30%	-45	HKP Platform Structure Portion 1 - Portal Frame (Protective Fence) Installation for Beam & Deck Construc
KD2_HKPP_S_1110	HKP Platform Structure Portion 1 - Beams & Deck Construction	60	54	12-Sep-24 A	22-Nov-24	5%	-45	HKP Platform Structure Portion 1 - Beams & Deck C
KD2_HKPP_S_1230	HKP Platform Structure Portion 1 - Remove Portal Frame for Constructed Beams & Deck	42	42	23-Nov-24	13-Jan-25	0%	49	
HKP Platform - Superstructure Portion 2 #->New Deck Zone B		165	97	21-Jun-24 A	04-Jan-25	-65		
KD2_HKPP_S_1120	HKP Platform Structure Portion 2 - Column Construction	115	4	21-Jun-24 A	03-Oct-24	93%	-65	HKP Platform Structure Portion 2 - Column Construction, HKP Platform Structure Portion 2 - Column Construction
KD2_HKPP_S_1130	HKP Platform Structure Portion 2 - Portal Frame (Protective Fence) Installation for Beam & Deck Construction	45	45	04-Oct-24	17-Nov-24	0%	-65	HKP Platform Structure Portion 2 - Portal Frame (Protective
KD2_HKPP_S_1140	HKP Platform Structure Portion 2 - Beams & Deck Construction	48	48	18-Nov-24	04-Jan-25	0%	-65	
HKP Platform - Superstructure Portion 3 #->New Deck Zone D (next to lift)		85	85	30-Oct-24	11-Feb-25	32		
HKP Platform - Superstructure Portion 4 #->New Deck Zone C (next to P15)		69	69	11-Oct-24	02-Jan-25	-6		
HKP Platform - Superstructure Portion 5#->New Deck Zone E (Lift area)		88	88	19-Aug-24 A	14-Jan-25	-35		
HKP Platform - Superstructure Portion 5 - ELS for Pile Cap H-P20 & H-P21		61	61	19-Aug-24 A	11-Dec-24	-35		
KD2_HKPP_S_1402	HKP Platform Structure Portion 5 - Cap H-P20 & H-P21 Driving Sheet Pile	14	0	19-Aug-24 A	19-Sep-24 A	100%		HKP Platform Structure Portion 5 - Cap H-P20 & H-P21 Driving Sheet Pile
KD2_HKPP_S_1412	HKP Platform Structure Portion 5 - Submit BA14 with Sheet Pile Record Plan to BD	1	1	25-Sep-24 A	30-Sep-24	50%	-35	HKP Platform Structure Portion 5 - Submit BA14 with Sheet Pile Record Plan to BD, HKP Platform Structure Portion 5 - Submit
KD2_HKPP_S_1422	HKP Platform Structure Portion 5 - BD Acknowledge for Completion of Sheet Pile Wall	28	28	01-Oct-24	28-Oct-24	0%	-42	HKP Platform Structure Portion 5 - BD Acknowledge for Completion of Sheet Pile Wall,

Actual Work	Second Baseline Milestone
Remaining Work	Primary Baseline
Critical Remaining Work	Baseline Milestone
Milestone	
Second Baseline	

Project ID: MU26A-CWPG-A04D
CWPG-A04 - 3 Months Rolling Programme
Page 1 of 3

Data Date: 30-Sep-24
Printed: 02-Oct-24 11:09
Layout: C21W18-WPU_MU28A (2BL) large 3MRP - Envi
Filter: TASK filters: 3 Month, without LOE, Without WBS Summary.

Date	Revision	Checked	Approved
30-Sep-24	C21W18-CWPG-A04-MU28A (Adv...	Gary Yeung	Kingsley Chiang

Activity ID	Activity Name	Prog Update QD	Remaining Duration	Start	Finish	Physical % Complete	Total Float	2024					
								Sep	Oct	Nov	Dec		
KD2_HKPP_S_1432	HKP Platform Structure Portion 5 - Submit BA8 for Commencement of Excavation of ELS	1	1	29-Oct-24	29-Oct-24	0%	-33						
KD2_HKPP_S_1442	HKP Platform Structure Portion 5 - BD Issue Consent for Commencement of Excavation	28	28	30-Oct-24	26-Nov-24	0%	-41						
KD2_HKPP_S_1452	HKP Platform Structure Portion 5 - Submit BA10 for Commencement of Excavation	7	7	27-Nov-24	03-Dec-24	0%	-41						
KD2_HKPP_S_1462	HKP Platform Structure Portion 5 - Excavation of ELS including Blinding	7	7	04-Dec-24	11-Dec-24	0%	-35						
HKPP_temp_1	Demolition of SFR platform (after FC)	30	30	30-Sep-24	29-Oct-24	0%	-43						
HKPP_temp_2	MJ formation	30	30	30-Oct-24	28-Nov-24	0%	-43						
HKP Platform - Superstructure Portion 5 - BD Submission for Superstructure		28	28	03-Sep-24 A	03-Nov-24		-2						
HKP Platform - Superstructure Portion 5 - Pile Cap H-P20 & H-P21 Construction		27	27	12-Dec-24	14-Jan-25		-35						
HKP Platform - Concrete Parapet Barrier Wall on Carriageway		58	58	23-Nov-24	04-Feb-25		109						
HKP Platform - ABWF		54	54	23-Nov-24	27-Jan-25		43						
HKP Platform - E&M		22	22	23-Nov-24	19-Dec-24		133						
HKP Platform - Plant Room (R21-R23 on Platform Level)		20	20	13-Dec-24	07-Jan-25		-55						
HKP Platform - External Works at Ground Level		99	99	30-Sep-24	27-Jan-25		54						
Realign Security Fence - New Staircase After Removal of Existing Lift & Staircase		33	33	29-Nov-24	08-Jan-25		-37						
HKP - Re-provision of Staircase, Lift & Escalator		24	24	23-Dec-24	22-Jan-25		58						
Relocation of Existing Fuel Tank		120	120	30-Sep-24	27-Jan-25		-24						
HKP Viaduct		347	167	01-Jun-23 A	24-Apr-25		173						
HKP Viaduct Pile Group 1 & 3 - UU Diversion - Water Main Diversion		7	3	27-Mar-24 A	03-Oct-24		183						
HKP Viaduct Pile Group 1 & 3 - UU Diversion - LV, ELV, CT Cable Duct Diversion		277	97	01-Jun-23 A	24-Jan-25		115						
HKP Viaduct - Super-structure		262	167	19-Apr-24 A	24-Apr-25		173						
HKP Viaduct - Span Portion 1 - P12 to P15		83	59	19-Aug-24 A	09-Dec-24		90						
HKP Viaduct - Portion 1 - Span P12 to Span P15		83	59	19-Aug-24 A	09-Dec-24		90						
HKP Viaduct - Portion 1 - Span P12 to P15 Pile Cap		10	0	19-Aug-24 A	02-Sep-24 A								
HKP Viaduct - Portion 1 - P12, P13, P14, P15		10	0	19-Aug-24 A	02-Sep-24 A								
KD2_HKPV_S_1140	HKP Viaduct Portion 1 - Pile Cap Construction - P14	10	0	19-Aug-24 A	02-Sep-24 A	100%							
HKP Viaduct - Portion 1 - Span P12 to P15 Pier		33	9	20-Aug-24 A	10-Oct-24		90						
HKP Viaduct - Portion 1 - P12, P13, P14, P15		33	9	20-Aug-24 A	10-Oct-24		90						
KD2_HKPV_S_1220	HKP Viaduct - Pier Construction - P13	9	0	20-Aug-24 A	17-Sep-24 A	100%							
KD2_HKPV_S_1230	HKP Viaduct - Pier Construction - P14	9	0	03-Sep-24 A	27-Sep-24 A	100%							
KD2_HKPV_S_1240	HKP Viaduct - Pier Construction - P15	9	9	30-Sep-24	10-Oct-24	0%	90						
HKP Viaduct - Portion 1 - Span P12 to P15 Pier Head		48	24	23-Aug-24 A	29-Oct-24		90						
HKP Viaduct - Portion 1 - Span P12, P13, P14, P15		48	24	23-Aug-24 A	29-Oct-24		90						
KD2_HKPV_S_1330	HKP Viaduct Portion 1 - Pier Head Construction - P12	13	0	23-Aug-24 A	28-Sep-24 A	100%							
KD2_HKPV_S_1350	HKP Viaduct Portion 1 - Pier Head Construction - P13	13	13	30-Sep-24	16-Oct-24	0%	58						
KD2_HKPV_S_1390	HKP Viaduct Portion 1 - Pier Head Construction - P14	13	13	30-Sep-24	16-Oct-24	0%	77						
KD2_HKPV_S_1250	HKP Viaduct Portion 1 - Install Bearing - P12	2	2	30-Sep-24	02-Oct-24	0%	69						
KD2_HKPV_S_1620	HKP Viaduct Portion 1 - Pier Head Construction - P15	13	13	12-Oct-24	26-Oct-24	0%	90						
KD2_HKPV_S_1622	HKP Viaduct Portion 1 - Install Bearing - P15	2	2	28-Oct-24	29-Oct-24	0%	90						
HKP Viaduct - Portion 1 - Span P12 to P15 Deck		46	46	17-Oct-24	09-Dec-24		90						
HKP Viaduct - Portion 1 - Span P12 to P13 Deck		44	44	17-Oct-24	06-Dec-24		58						
KD2_HKPV_S_1300	HKP Viaduct Portion 1 - Span P12 to Quarter of P13 to P14 Deck	38	38	17-Oct-24	29-Nov-24	0%	58						
KD2_HKPV_S_1420	HKP Viaduct Portion 1 - Span P12 to Quarter of P13 to P14 Deck, Prestressing (5d strength + 1d stressing)	6	6	30-Nov-24	06-Dec-24	0%	58						
HKP Viaduct - Portion 1 - Span P13 to P14 Deck		39	39	17-Oct-24	30-Nov-24		77						
KD2_HKPV_S_1310	HKP Viaduct Portion 1 - Span P13 to P14 Deck	33	33	17-Oct-24	23-Nov-24	0%	77						
KD2_HKPV_S_1430	HKP Viaduct Portion 1 - Span P13 to P14 Deck, Prestressing (5d strength + 1d stressing)	6	6	25-Nov-24	30-Nov-24	0%	77						
HKP Viaduct - Portion 1 - Span P14 to P15 Deck		35	35	30-Oct-24	09-Dec-24		90						
KD2_HKPV_S_1320	HKP Viaduct Portion 1 - Span P14 to P15 Deck	29	29	30-Oct-24	02-Dec-24	0%	90						
KD2_HKPV_S_1440	HKP Viaduct Portion 1 - Span P14 to P15 Deck, Prestressing (5d strength + 1d stressing)	6	6	03-Dec-24	09-Dec-24	0%	90						
HKP Viaduct - Portion 1 - Superstructure - Associated Facilities		38	38	02-Dec-24	16-Jan-25		86						
HKP Viaduct - Portion 1 - Carriageway Portion		38	38	02-Dec-24	16-Jan-25		86						
HKP Viaduct - Portion 2 - Span from P8 to P11		262	167	19-Apr-24 A	24-Apr-25		173						
HKP Viaduct Portion 2 - Span P8 to P11		262	167	19-Apr-24 A	24-Apr-25		173						
HKP Viaduct Portion 2 - Span P8 to P11 Pier		2	2	30-Sep-24	02-Oct-24		72						
KD2_HKPV_S_1340	HKP Viaduct Portion 2 - Install Bearing - P8	2	2	30-Sep-24	02-Oct-24	0%	72						
HKP Viaduct Portion 2 - Span P9 to P11 Pier Head		28	2	10-Aug-24 A	04-Oct-24		-41						
KD2_HKPV_S_1290	HKP Viaduct Portion 2 - Pier Head Construction - P11	13	0	10-Aug-24 A	13-Sep-24 A	100%							
KD2_HKPV_S_1360	HKP Viaduct Portion 1 - Install Bearing - P11	2	2	03-Oct-24	04-Oct-24	0%	-41						
HKP Viaduct Portion 2 - Span P8 to P11 Deck		262	167	19-Apr-24 A	24-Apr-25		173						
HKP Viaduct Portion 2 - Counter Balance From P11 to P12& P10		43	24	14-Sep-24 A	23-Oct-24		-51						
temp_P11_1	After P11 pile cap finish: Erect falsework for P11-R6 to P12	43	24	14-Sep-24 A	23-Oct-24	30%	-51						
HKP Viaduct Portion 2 - Counter Balance From P10 to P11 & P9		243	167	27-Jun-24 A	24-Apr-25		-44						

- █ Actual Work
- █ Remaining Work
- █ Critical Remaining Work
- ◆ Milestone
- █ Second Baseline
- ◆ Second Baseline Milestone
- █ Primary Baseline
- ◆ Baseline Milestone

Project ID: MU26A-CWPG-A04D
CWPG-A04 - 3 Months Rolling Programme
 Page 2 of 3

Data Date: 30-Sep-24
Printed: 02-Oct-24 11:09
Layout: C21W18-WPU_MU28A (2BL) large 3MRP - Envi
Filter: TASK filters: 3 Month, without LOE, Without WBS Summary.

Date	Revision	Checked	Approved
30-Sep-24	C21W18-CWPG-A04-MU28A (Adv...	Gary Yeung	Kingsley Chiang

Activity ID	Activity Name	Prog Update OD	Remaining Duration	Start	Finish	Physical % Complete	Total Float	2024			
								Sep	Oct	Nov	Dec
KD2_HKPV_S_1400	HKP Viaduct - Counter Balance from P10 to P11& P9 (15 Segment x 8d/seg = 120d)	204	167	27-Jun-24 A	24-Apr-25	21%	-44				
KD2_HKPV_S_1400B	P10 - FT Setup	38	38	02-Oct-24	15-Nov-24	0%	-44				P10 - FT Setup, P10 - FT Setup
KD2_HKPV_S_1400C	P10 - Span P10 to P11 & P9 by FT (8pairs x 16d=128)	128	128	16-Nov-24	24-Apr-25	0%	-44				
KD2_HKPV_S_1400D	P10 - Remedial Works on SOP	30	1	11-Aug-24 A	30-Sep-24	90%	-53				P10 - Remedial Works on SOP, P10 - Remedial Works on SOP
HKP Viaduct Portion 2 - Counter Balance From P9 to P10 & P8		151	54	19-Apr-24 A	03-Dec-24		286				
KD2_HKPV_S_1450	HKP Viaduct - Counter Balance from P9 to P10 & P8 (10 Segment=10 x 8d/segment = 80d)	140	54	19-Apr-24 A	03-Dec-24	55%	-4				HKP Viaduct - Counter Balance from
KD2_HKPV_S_1450B	P9 - FT Setup	30	0	27-Jun-24 A	10-Sep-24 A	100%					P9 - FT Setup
KD2_HKPV_S_1450C	P9 - Span P9 to P10 & P8 by FT (5pairs x 16d=80)	80	54	29-Aug-24 A	03-Dec-24	25%	286				P9 - Span P9 to P10 & P8 by FT (5p
HKP Viaduct Portion 2 - In-situ Deck From P8 to P9		24	24	04-Dec-24	02-Jan-25		-4				
KD2_HKPV_S_3590	HKP Viaduct - Erect Full Span Truss across Marine Portion	24	24	04-Dec-24	02-Jan-25	0%	-4				
HKP Viaduct Portion 2 - Stitching & Bottom Stress		81	81	06-Oct-24	11-Jan-25		-43				
HKP Viaduct Portion 2 - Counter Balance From P11 to P12& P10		81	81	06-Oct-24	11-Jan-25		-43				
KD2_HKPV_S_1410	HKP Viaduct - HKP Viaduct - Construction of Deck from P11-R6 to P12	78	78	06-Oct-24	22-Dec-24	0%	-51				HKP Viad
KD2_HKPV_S_1460	HKP Viaduct Portion 1 - Span P11 to P12 Deck, Bottom Prestressing	16	16	23-Dec-24	11-Jan-25	0%	-43				
Marine Viaduct		547	125	29-Dec-22 A	01-Mar-25		83				
Marine Viaduct - Interfacing Works		247	1	29-Dec-22 A	30-Sep-24		-150				
Marine Viaduct - Construction		124	124	01-Oct-24	01-Mar-25		83				
At-Grade Works		535	121	10-Nov-22 A	25-Feb-25		91				
At-Grade Plant Room		535	121	10-Nov-22 A	25-Feb-25		91				
Diversion for Existing UU		535	121	10-Nov-22 A	25-Feb-25		91				
Structure, ABWF and E&M Works for At-Grade Plant Room		114	90	15-Aug-24 A	16-Jan-25		122				
At-Grade Plant Room - Structure Works		93	69	15-Aug-24 A	20-Dec-24		43				
At-Grade Plant Room Structure - Cable Trench for Transformer Room		12	12	30-Sep-24	15-Oct-24		100				
KD2_AGP_1540	Cable Trench for Transformer Room - Rebar Fixing	3	3	30-Sep-24	03-Oct-24	0%	100				Cable Trench for Transformer Room - Rebar Fixing, Cable Trench for Transformer Room - Rebar Fixing
KD2_AGP_1550	Cable Trench for Transformer Room - Formwork Erection	4	4	04-Oct-24	08-Oct-24	0%	100				Cable Trench for Transformer Room - Formwork Erection, Cable Trench for Transformer Room - Formwork Erection
KD2_AGP_1560	Cable Trench for Transformer Room - Concrete to Trench Wall & Slab	1	1	09-Oct-24	09-Oct-24	0%	100				Cable Trench for Transformer Room - Concrete to Trench Wall & Slab, Cable Trench for Transformer Room - Concrete to Trench Wall & Slab
KD2_AGP_1570	Cable Trench for Transformer Room - Backfilling to Ground Level	4	4	10-Oct-24	15-Oct-24	0%	100				Cable Trench for Transformer Room - Backfilling to Ground Level, Cable Trench for Transformer Room - Backfilling to Ground Level
At-Grade Plant Room Structure - Upper Roof for Transformer Room and Other Rooms Roof		42	7	28-Aug-24 A	08-Oct-24		69				
KD2_AGP_1680	Rebar Fixing for All Roofs	4	0	28-Aug-24 A	30-Aug-24 A	100%					Rebar Fixing for All Roofs
KD2_AGP_1690	Place Concrete for All Roofs	1	0	31-Aug-24 A	31-Aug-24 A	100%					Place Concrete for All Roofs
KD2_AGP_1910	Remove Soffit Formwork & Scaffolding(28 days strength + 5 day Removal)	33	7	01-Sep-24 A	08-Oct-24	30%	69				Remove Soffit Formwork & Scaffolding(28 days strength + 5 day Removal), Remove Soffit Formwork & Scaffolding
At-Grade Plant Room Structure - Street Fire Hydrant Supply Water Tanks		69	69	15-Aug-24 A	20-Dec-24		8				
At-Grade Plant Room Structure - Roof Parapet Wall + Dog House, Access Hole for Cat Ladder		14	14	03-Oct-24	19-Oct-24		47				
At-Grade Plant Room Structure - Plinths in Each Room		6	6	09-Oct-24	16-Oct-24		69				
At-Grade Plant Room Structure - Roof Surface Finish		19	19	21-Oct-24	11-Nov-24		47				
At-Grade Plant Room - Under Ground Water Main		21	21	21-Dec-24	16-Jan-25		8				
At-Grade Plant Room - Cable Lead In to Transformer Room		14	14	21-Dec-24	08-Jan-25		71				
At-Grade Plant Room - ABWF Works		84	84	02-Oct-24	11-Jan-25		126				
At-Grade Plant Room - E&M Installation Works		21	21	19-Dec-24	15-Jan-25		79				
At-Grade Plant Room - Transformer Room		21	21	20-Dec-24	15-Jan-25		44				
At-Grade Plant Room - LV Switch Room		7	7	19-Dec-24	28-Dec-24		86				
At-Grade Plant Room - FS Generator Room		7	7	19-Dec-24	28-Dec-24		93				
Airport System		540	118	04-Nov-22 A	21-Feb-25		80				
KD3 - Statutory Submission & Approval for Completion of Testing & Commissioning		35	35	30-Sep-24	11-Nov-24		83				

■ Actual Work ◆ Second Baseline Milestone
■ Remaining Work — Primary Baseline
■ Critical Remaining Work ◆ Baseline Milestone
◆ Milestone
— Second Baseline

Project ID: MU26A-CWPG-A04D
CWPG-A04 - 3 Months Rolling Programme
 Page 3 of 3


Data Date: 30-Sep-24
Printed: 02-Oct-24 11:09
Layout: C21W18-WPU_MU28A (2BL) large 3MRP - Envi
Filter: TASK filters: 3 Month, without LOE, Without WBS Summary.

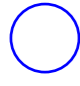
Date	Revision	Checked	Approved
30-Sep-24	C21W18-CWPG-A04-MU28A (Adv...	Gary Yeung	Kingsley Chiang

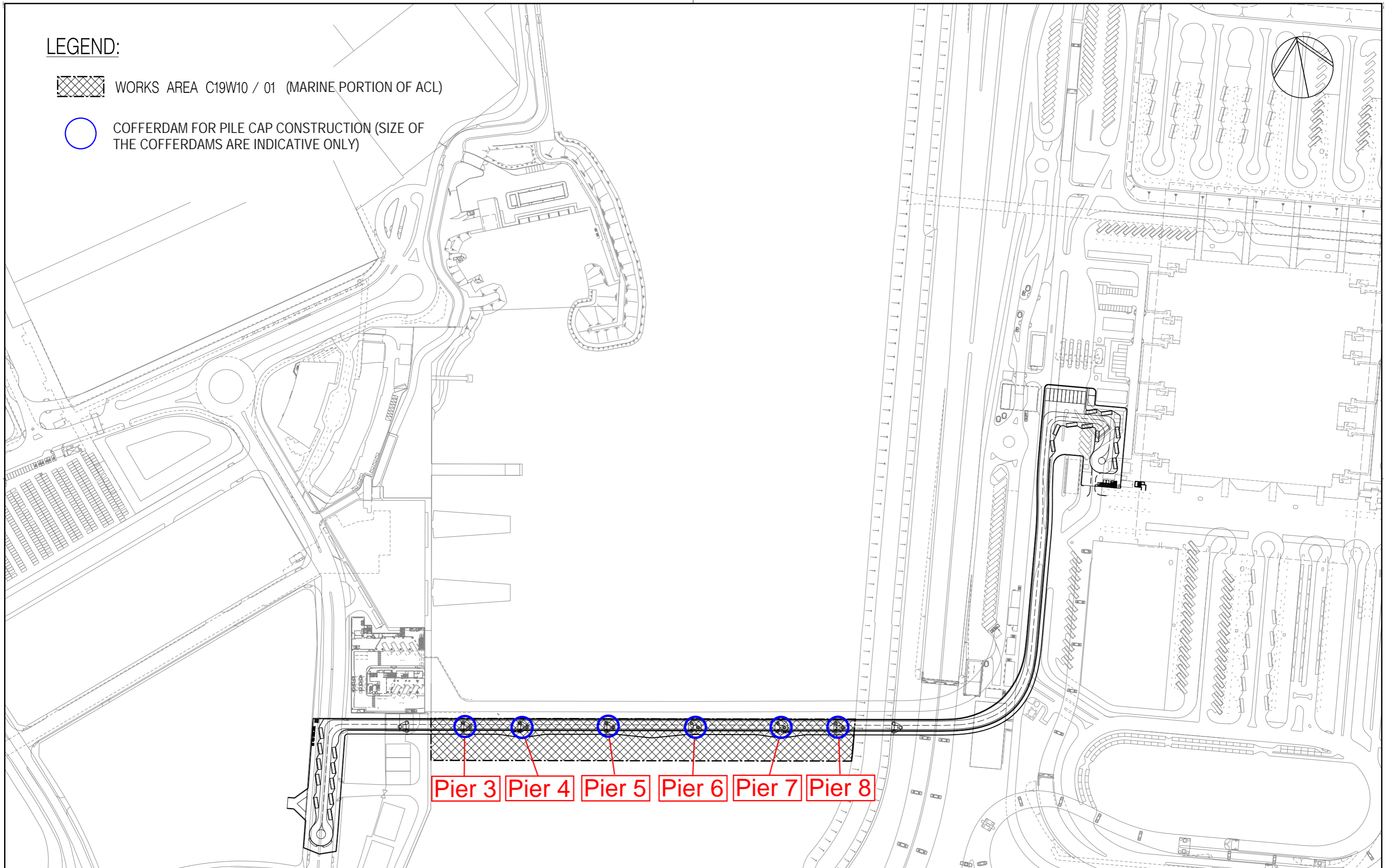
Appendix C. Construction Works Area

Marine Section

LEGEND:

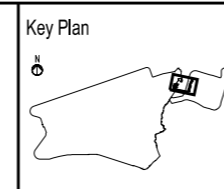
 WORKS AREA C19W10 / 01 (MARINE PORTION OF ACL)

 COFFERDAM FOR PILE CAP CONSTRUCTION (SIZE OF THE COFFERDAMS ARE INDICATIVE ONLY)



Rev.	Date	Description	Checked
A	07OCT2021	ISSUE FOR TENDER	HARRY CHAU

Airport Authority
 HKIA Tower, 1 Sky Plaza Road,
 Hong Kong International Airport,
 Lantau, Hong Kong.
 Tel : (852) 2188 7111
 Fax : (852) 2824 0717



Title SUPPLEMENTAL AGREEMENT C19W10/01
 AIRPORTCITY LINK - MARINE PORTION

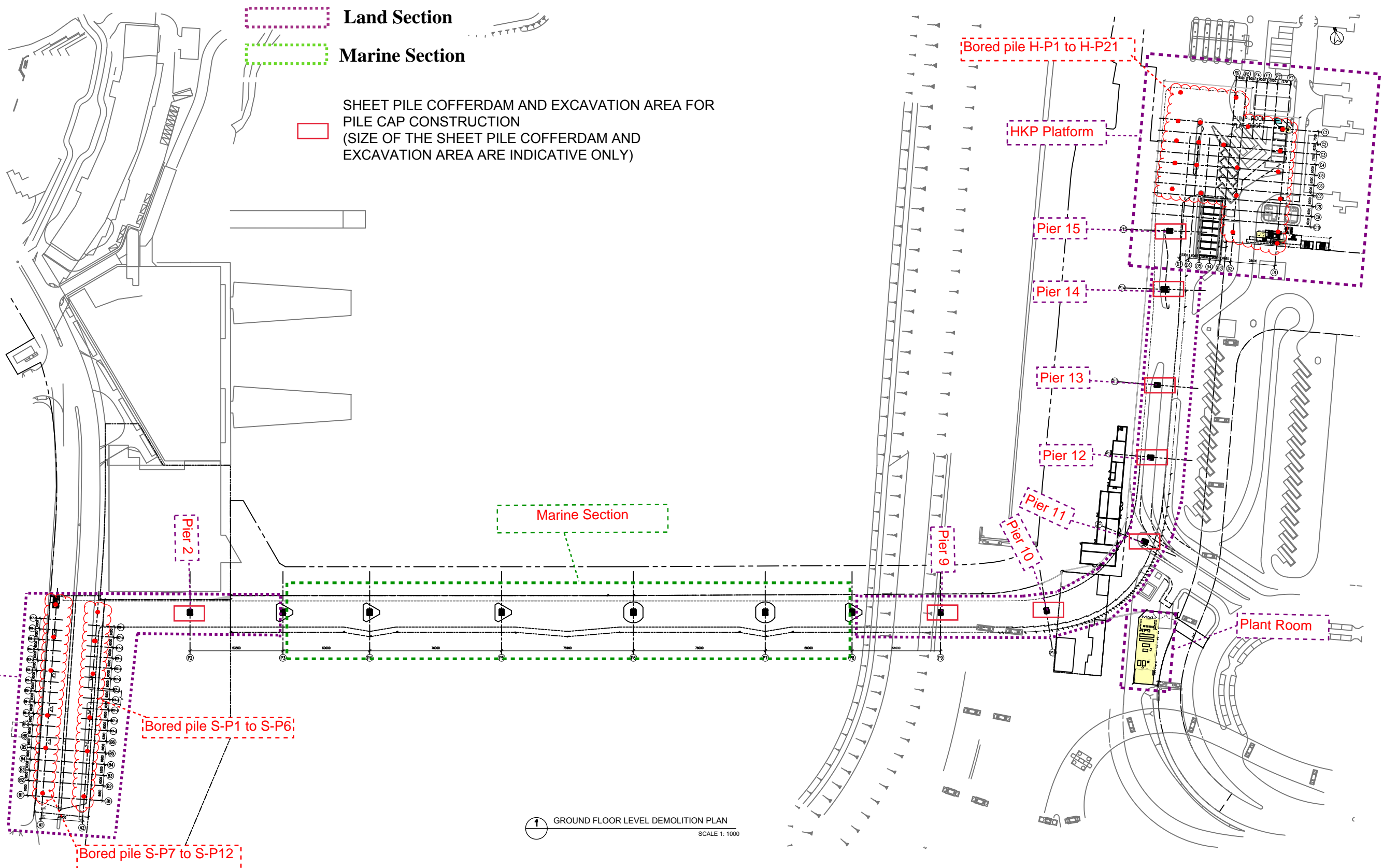
WORKS AREA PLAN

Signatures for Approval	Date
Design Supervisor : HARRY CHAU	31JUL2021
Checkers : HARRY CHAU	31JUL2021
Authorised Representative :	31JUL2021

Hong Kong International Airport	
Drawing No.	CWD/C19W10-01 / AAACL / C / DR / 0100000
Scale	1:3000 (A3)
Rev.	A

Land Section

Date No. OAP / AAACL / A / DR / 990201



GROUND FLOOR LEVEL DEMOLITION PLAN
SCALE 1: 1000

Notes:

- Measurements are based on metric system.
- All levels are in metres to Principal Datum (mPD) unless noted otherwise.
- Do not scale drawing.
- Figure dimensions are to be followed.
- Do not use for construction unless expressly permitted.
- The Contractor shall verify all conditions on the Site & notify the Project Manager of any variations from dimensions before construction.

Copyright in this document and all proprietary rights in the information it contains belong to the AA. It is a condition of the supply of this document, in whatever form, that the recipient shall hold it in confidence and shall not duplicate or otherwise reproduce it in whole or in part, nor disclose its contents without the written consent of the AA.

File Name : U:\STUDIO_KIPROJ_DATA\2020\20080\DRAWING\TENDERMAIN CONTRACT\LOT990201 -WP GF PLAN

Rev.	Date	Description	Checked
A	15-DEC-2021	ISSUE FOR TENDER	KW

Consultant's Signatures for Approval			
Drawn	Date	Design	Date
LKW	DEC 2021	MAL	DEC 2021
Checkers	U/E/2021	Plot Date	
KW			DEC 2021
Design Supervisor		Date	
KW		DEC 2021	
Authorised Representative		Date	
KW		DEC 2021	

ARUP



HONG KONG INTERNATIONAL AIRPORT
香港國際機場

Airport Authority HQA Tower, 1 Sky Plaza Road, Hong Kong International Airport, Lantau, Hong Kong
Tel : (852) 2188 7111 Fax : (852) 2824 0711

Key Plan		Hong Kong International Airport									
Scale	Location	Originator	Design Ref.	Location	Discipline	Type	Number	Status	Rev.		
		OAP	C20C17	AAACL	A	DR	990201	Tender	A1		
Title: WORKS AREA PLAN											
Plot Date : December 11, 2021											

Appendix D. Environmental Site Inspection and Monitoring Schedule

ACL Environmental Monitoring and Site Inspection Schedule for September 2024

Sep-24

Sunday	Monday	Tuesday	Wednesday	Thursday	Friday	Saturday
1	2 ACL (Land) Environmental Site Inspection	3	4 ACL (Marine) Environmental Site Inspection	5	6	7
8	9 ACL (Land) Environmental Site Inspection	10 ACL (Marine) Environmental Site Inspection	11	12	13	14
15	16 ACL (Land) Environmental Site Inspection ACL (Marine) Environmental Site Inspection	17	18	19	20	21
22	23 ACL (Land) Environmental Site Inspection	24 ACL (Marine) Environmental Site Inspection	25	26	27	28
29	30 ACL (Land) Environmental Site Inspection					
		Notes:				

ACL Environmental Monitoring and Site Inspection Schedule for October 2024

Oct-24

Sunday	Monday	Tuesday	Wednesday	Thursday	Friday	Saturday
		1	2 ACL (Marine) Environmental Site Inspection	3	4	5
6	7 ACL (Land) Environmental Site Inspection	8 ACL (Marine) Environmental Site Inspection	9	10	11	12
13	14 ACL (Land) Environmental Site Inspection	15 ACL (Marine) Environmental Site Inspection	16	17	18	19
20	21 ACL (Land) Environmental Site Inspection	22 ACL (Marine) Environmental Site Inspection	23	24	25	26
27	28 ACL (Land) Environmental Site Inspection	29 ACL (Marine) Environmental Site Inspection	30	31		
		Notes:				

Appendix E. Event and Action Plan

Table E.1: Event and Action Plan for Marine Water Quality

Event	Action			
	ET	IEC	AAHK / PM	Contractor
Action level being exceeded by one sampling day	<ol style="list-style-type: none"> 1. Repeat <i>in-situ</i> measurement to confirm findings; 2. Identify reasons for non-compliance and source(s) of impact; 3. Inform IEC and Contractor; 4. Check monitoring data, all plant, equipment and Contractor's working methods; 5. Discuss mitigation measures with IEC and Contractor; 6. Repeat measurement on next day of exceedance. 	<ol style="list-style-type: none"> 1. Discuss with ET and Contractor on the mitigation measures; 2. Review proposals on mitigation measures submitted by Contractor and advise AAHK / PM accordingly; 3. Assess the effectiveness of the implemented mitigation measures. 	<ol style="list-style-type: none"> 1. Discuss with IEC on the proposed mitigation measures; 2. Make agreement on the mitigation measures to be implemented; 4. Assess the effectiveness of the implemented mitigation measures. 	<ol style="list-style-type: none"> 1. Inform the AAHK / PM and confirm notification of the non-compliance in writing; 2. Rectify unacceptable practice; 3. Check all plant and equipment; 4. Consider changes of working methods; 5. Discuss with ET and IEC and propose mitigation measures.
Action level being exceeded by two or more consecutive sampling days	<ol style="list-style-type: none"> 1. Repeat <i>in-situ</i> measurement to confirm findings; 2. Identify reasons for non-compliance and source(s) of impact; 3. Inform IEC and Contractor; 4. Check monitoring data, all plant, equipment and Contractor's working methods; 5. Discuss mitigation measures with IEC and Contractor; 6. Ensure mitigation measures are implemented; 7. Prepare to increase the monitoring frequency to daily; 8. Repeat measurement on next day of exceedance. 	<ol style="list-style-type: none"> 1. Discuss with ET and Contractor on the mitigation measures; 2. Review proposals on mitigation measures submitted by Contractor and advise the AAHK / PM accordingly; 3. Assess the effectiveness of the implemented mitigation measures. 	<ol style="list-style-type: none"> 1. Discuss with IEC on the proposed mitigation measures; 2. Make agreement on the mitigation measures to be implemented; 3. Assess the effectiveness of the implemented mitigation measures. 	<ol style="list-style-type: none"> 1. Inform the AAHK / PM and confirm notification of the non-compliance in writing; 2. Rectify unacceptable practice; 3. Check all plant and equipment 4. Consider changes of working methods; 5. Discuss with ET and IEC and propose mitigation measures to IEC and AAHK / PM within 3 working days; 6. Implement the agreed mitigation measures.
Limit level being exceeded by one sampling day	<ol style="list-style-type: none"> 1. Repeat <i>in-situ</i> measurement to confirm findings; 2. Identify reasons for non-compliance and source(s) of impact; 3. Inform IEC, Contractor and EPD; 4. Check monitoring data, all plant, equipment and Contractor's working methods; 5. Discuss mitigation measures with IEC, AAHK / PM and 	<ol style="list-style-type: none"> 1. Discuss with ET and Contractor on the mitigation measures; 2. Review proposals on mitigation measures submitted by Contractor and advise the AAHK / PM accordingly; 3. Assess the effectiveness of the implemented mitigation measures. 	<ol style="list-style-type: none"> 1. Discuss with IEC, ET and Contractor on the proposed mitigation measures; 2. Request Contractor to critically review the working methods; 3. Make agreement on the mitigation measures to be implemented; 4. Assess the effectiveness of the implemented mitigation measures. 	<ol style="list-style-type: none"> 1. Inform the AAHK / PM and confirm notification of the non-compliance in writing; 2. Rectify unacceptable practice; 3. Check all plant and equipment; 4. Consider changes of working methods; 5. Discuss with ET, IEC and AAHK / PM and propose mitigation measures to IEC and AAHK / PM within

Event	Action			
	ET	IEC	AAHK / PM	Contractor
	Contractor; 6. Ensure mitigation measures are implemented; 7. Increase the monitoring frequency to daily until no exceedance of limit level.			three working days; 6. Implement the agreed mitigation measures.
Limit level being exceeded by two or more consecutive sampling days	1. Repeat <i>in-situ</i> measurement to confirm findings; 2. Identify reasons for non-compliance and source(s) of impact; 3. Inform IEC, Contractor and EPD; 4. Check monitoring data, all plant, equipment and Contractor's working methods; 5. Discuss mitigation measures with IEC, AAHK / PM and Contractor; 6. Ensure mitigation measures are implemented; 7. Increase the monitoring frequency to daily until no exceedance of Limit level for two consecutive days.	1. Discuss with ET and Contractor on the mitigation measures; 2. Review proposals on mitigation measures submitted by Contractor and advise the AAHK / PM accordingly; 3. Assess the effectiveness of implemented mitigation measures.	1. Discuss with IEC, ET and Contractor on the proposed mitigation measures; 2. Request Contractor to critically review the working methods; 3. Make agreement on the mitigation measures to be implemented; 4. Assess the effectiveness of the implemented mitigation measures; 5. Consider and instruct, if necessary, the Contractor to slow down or to stop all or part of the construction activities until no exceedance of Limit level.	1. Inform AAHK / PM and confirm notification of non-compliance in writing; 2. Rectify unacceptable practices; 3. Check all plant and equipment; 4. Consider changes of working method; 5. Discuss with ET, IEC and AAHK / PM and propose mitigation measures to IEC and AAHK / PM within 3 working days; 6. Implement the agreed mitigation measures; 7. As directed by the AAHK / PM, to slow down or to stop all or part of the construction activities.

Appendix F. Waste Flow Table

Marine Section

AAHK Supplemental Contract No. C19W10/01 Airport City Link - Marine Portion
Monthly Waste Flow Table

Month	Excavated Waste (tonnes)	Actual Quantities of Inert C&D Materials (excluding excavated waste) (tonnes) e.g. broken concrete					Actual Quantities of Non-inert C&D Waste (tonnes)					(k) Total recyclable waste (k) = (b) + (c) + (d) + (f) + (g)	(l) Total construction waste generated (l) = (a) + (j)
		(a) Total inert C&D material generated (a) = (b) + (c) + (d) + (e)	(b) Reused in contract	(c) Reused in other projects	(d) Sent to recycling company	(e) Disposed to public fill	(f) Recycled scrap metal	(g) Reused / recycled timber	(h) Chemical waste	(i) Other waste disposed to landfill	(j) Total non-inert C&D material generated (j) = (f) + (g) + (h) + (i)		
Apr-22	0.00	0.00	0.00	0.00	0.00	0.00	0.00	0.00	0.00	0.00	0.00	0.00	0.00
May-22	0.00	0.00	0.00	0.00	0.00	0.00	0.00	0.00	0.00	0.00	0.00	0.00	0.00
Jun-22	0.00	0.00	0.00	0.00	0.00	0.00	0.00	0.00	0.00	0.00	0.00	0.00	0.00
Jul-22	0.00	0.00	0.00	0.00	0.00	0.00	0.00	0.00	0.00	0.00	0.00	0.00	0.00
Aug-22	2591.67	2591.67	0.00	0.00	1584.00	1007.67	0.00	0.00	0.00	0.00	0.00	1584.00	2591.67
Sep-22	1340.00	1340.00	0.00	0.00	1340.00	0.00	0.00	0.00	0.36	0.00	0.36	1340.00	1340.36
Oct-22	1385.00	1385.00	0.00	0.00	1385.00	0.00	0.00	0.00	0.00	0.00	0.00	1385.00	1385.00
Nov-22	0.00	0.00	0.00	0.00	0.00	0.00	0.00	0.00	0.00	0.00	0.00	0.00	0.00
Dec-22	0.00	0.00	0.00	0.00	0.00	0.00	0.00	0.00	0.00	0.00	0.00	0.00	0.00
Jan-23	1814.47	1814.47	0.00	0.00	1814.47	0.00	0.00	0.00	0.36	0.00	0.36	1814.47	1814.83
Feb-23	761.45	761.45	0.00	0.00	0.00	761.45	0.00	0.00	0.00	0.00	0.00	0.00	761.45
Mar-23	939.46	939.46	0.00	0.00	939.46	0.00	0.00	0.00	0.25	0.00	0.25	939.46	939.71
Apr-23	0.00	0.00	0.00	0.00	0.00	0.00	0.00	0.00	0.00	0.00	0.00	0.00	0.00
May-23	0.00	0.00	0.00	0.00	0.00	0.00	0.00	0.00	0.00	0.00	0.00	0.00	0.00
Jun-23	0.00	0.00	0.00	0.00	0.00	0.00	0.00	0.00	0.00	0.00	0.00	0.00	0.00
Jul-23	0.00	0.00	0.00	0.00	0.00	0.00	0.00	0.00	0.00	2.99	2.99	0.00	2.99
Aug-23	16.16	16.16	0.00	0.00	0.00	16.16	0.00	0.00	0.00	16.83	16.83	0.00	32.99
Sep-23	95.49	95.49	0.00	0.00	0.00	95.49	0.00	0.00	0.00	4.25	4.25	0.00	99.74
Oct-23	69.96	69.96	0.00	0.00	0.00	69.96	0.00	0.00	0.00	15.83	15.83	0.00	85.79
Nov-23	29.24	29.24	0.00	0.00	0.00	29.24	0.00	0.00	0.00	10.57	10.57	0.00	39.81
Dec-23	0.00	0.00	0.00	0.00	0.00	0.00	0.00	0.00	0.00	17.64	17.64	0.00	17.64
Jan-24	16.05	16.05	0.00	0.00	0.00	16.05	9.53	0.00	0.00	31.44	40.97	9.53	57.02
Feb-24	0.00	0.00	0.00	0.00	0.00	0.00	0.00	0.00	0.00	33.45	33.45	0.00	33.45
Mar-24	0.00	0.00	0.00	0.00	0.00	0.00	12.33	0.00	0.00	34.82	47.15	12.33	47.15
Apr-24	0.00	0.00	0.00	0.00	0.00	0.00	0.00	0.00	0.00	30.57	30.57	0.00	30.57
May-24	0.00	0.00	0.00	0.00	0.00	0.00	0.00	0.00	0.00	43.15	43.15	0.00	43.15
Jun-24	0.00	0.00	0.00	0.00	0.00	0.00	0.00	0.00	0.00	34.34	34.34	0.00	34.34
Jul-24	0.00	0.00	0.00	0.00	0.00	0.00	0.00	0.00	0.00	55.02	55.02	0.00	55.02
Aug-24	0.00	0.00	0.00	0.00	0.00	0.00	76.78	0.00	0.00	43.08	119.86	76.78	119.86
Sep-24	0.00	0.00	0.00	0.00	0.00	0.00	241.61	0.00	0.00	48.28	289.89	241.61	289.89
Total	9058.95	9058.95	0.00	0.00	7062.93	1996.02	340.25	0.00	0.97	422.26	763.48	7403.18	9822.43

*Chemical waste, Wasted oil density 0.9kg/L

Land Section

C21W18 Monthly Waste Flow Table

Year	Month	Actual Quantities of Inert Construction Waste Generated Monthly			Actual Quantities of Non-inert Construction Waste Generated Monthly					
		(a)=(b)+(c)	(b)	(c)	Recycled	Recycled	Recycled	Recycled	Chemical Waste	General Refuse disposed of at Landfill
		Total Quantity Generated	Reused in other Projects	Disposed of as Public Fill	Timber	Metals	Paper/ cardboard	Plastic		
		(in '000kg)	(in '000kg)	(in '000kg)	(in '000kg)	(in '000kg)	(in '000kg)	(in '000kg)	(in '000kg)	(in '000kg)
2023	Jan	-	-	-	-	-	-	-	-	-
	Feb	754.38	0	754.38	0	0.017	0.129	0.038	0	22.27
	Mar	1464.86	0	1464.86	0	0.014	0.087	0.024	0	13.51
	Apr	1005.98	0	1005.98	0	0.007	0.025	0.013	0	11.94
	May	1723.58	0	1723.58	0	0.008	0.039	0.018	0	14.46
	Jun	944.13	0	944.13	0	0.025	0.022	0.102	0	14.01
	Sub-total	5892.93	0	5892.93	0	0.071	0.302	0.195	0	76.19
	Jul	1174.60	0	1174.60	0	0.012	0.044	0.012	0	31.92
	Aug	2287.72	0	2287.72	0	0.023	0.075	0.02	0	37.33
	Sep	2404.54	0	2404.54	0	0.007	0.022	0.015	0	10.12
	Oct	4354.08	0	4354.08	0	0.007	0.015	0.021	0	8.9
	Nov	3550.04	0	3550.04	0	0.010	0.025	0.020	0	19.84
	Dec	4333.88	0	4333.88	0	0.010	0.008	0.015	0	118.82
Sub-total	18104.86	0	18104.86	0	0.069	0.189	0.103	0	226.93	
2024	Jan	4902.86	303.29	4599.57	0	0	0.076	0.003	0	14.65
	Feb	1200.33	275.88	924.45	0	0	0	0	0	7.26
	Mar	1737.25	805.43	931.82	0	0.010	0.094	0.012	0	12.30
	Apr	2019.86	1393.54	626.32	0	0	0	0	0	9.98
	May	1239.55	791.04	448.51	0	0	0	0	0	15.00
	Jun	1363.33	1057.39	305.94	0	0.008	0.046	0.02	0	17.11
	Sub-total	12463.18	4626.57	7836.61	0	0.018	0.216	0.035	0	76.3
	Jul	1672.23	685.55	986.68	0	35.74	0.088	0.029	0	17.09
	Aug	342.65	0	342.65	0	25.604	0.06	0.04	0	42.62
	Sep	73.98	0	73.98	0	7.14	0	0	0	42.27
	Oct	-	-	-	-	-	-	-	-	-
	Nov	-	-	-	-	-	-	-	-	-
	Dec	-	-	-	-	-	-	-	-	-
Sub-total	2088.86	685.55	1403.31	0	68.484	0.148	0.069	0	101.98	
Total		38549.83	5312.12	33237.71	0.00	68.64	0.86	0.40	0.00	481.40

Appendix G. Status of Environmental Permits and Licences

Table G.1: Summary of Environmental Licenses and Permits - Marine Section (September 2024)

Type of Licence / Permit	Reference No.	Valid From	Valid Until	Remark
Environmental Permit	EP-581/2020	5 Oct 2020	End of Project	N/A
Billing Account for Disposal of Construction Waste	7043487	18 Mar 2022	End of Project	N/A
Construction Dust Notification under APCO	477560	10 Mar 2022	N/A	N/A
Construction Noise Permit	GW-RS0686-24	1 Aug 2024	29 Jan 2025	Issued by EPD on 30 Jul 2024.
	GW-RS0744-24	15 Aug 2024	14 Feb 2025	Issued by EPD on 13 Aug 2024.
Chemical Waste Producer	5213-951-G2961-01	19 Apr 2022	End of Project	N/A
Water Discharge License – Marine	WT00044182-2023	23 Aug 2023	31 Aug 2028	N/A

Table G.2: Summary of Environmental Licenses and Permits - Land Section (September 2024)

Type of Licence / Permit	Reference No.	Valid From	Valid Until	Remark
Environmental Permit	EP-581/2020	5 Oct 2020	End of Project	N/A
Billing Account for Disposal of Construction Waste	7044291	27 Jun 2022	End of Project	N/A
Construction Dust Notification under APCO	480843	10 Jun 2022	N/A	N/A
Construction Noise Permit	GW-RS0739-24	23 Aug 2024	22 Feb 2025	Issued by EPD on 16 Aug 2024.
Chemical Waste Producer	5213-951-C1169-68	23 Jun 2022	End of Project	N/A
Water Discharge License	WT00042879-2022	17 Apr 2023	31 Jan 2028	Variation of discharge license WT00042879-2022 granted on 4 Jan 2023.
	WT00042680-2022	29 Aug 2023	31 Jan 2028	Variation of discharge license WT00042680-2022 granted on 9 Jan 2023.
	WT10002073-2023	5 Feb 2024	28 Feb 2029	N/A

Appendix H. Environmental Mitigation Measures Implementation Status

Environmental Mitigation Measures Implementation Status (September 2024)

Recommended Mitigation Measures for Air Quality Impact

PP Ref.	EM&A Ref.	Recommended Mitigation Measures	Mitigation Measures Implemented? ^ (Marine Section)	Mitigation Measures Implemented? ^ (Land Section)
S6.1.1	S4.2.1	<ul style="list-style-type: none"> Relevant control measures as required in the Air Pollution Control (Construction Dust) Regulation shall be implemented to minimise dust impact. 	Yes	Obs
		<ul style="list-style-type: none"> Skip hoist for material transport should be totally enclosed by impervious sheeting. 	N/A	Yes
		<ul style="list-style-type: none"> All dusty materials should be sprayed with water prior to any loading, unloading or transfer operation to maintain the dusty materials wet. 	N/A	Obs
		<ul style="list-style-type: none"> All stockpiles of aggregate or spoil should be covered and/or water applied. 	Yes	Obs
		<ul style="list-style-type: none"> The height from which excavated materials are dropped should be controlled to a minimum practical height to limit fugitive dust generation from unloading. 	N/A	Yes
		<ul style="list-style-type: none"> Immediately before leaving a construction site, every vehicle shall be washed to remove any dusty materials from its body and wheels. 	N/A	Obs
		<ul style="list-style-type: none"> The load of dusty materials carried by a vehicle leaving a construction site should be covered entirely by clean impervious sheeting to ensure dust materials do not leak from the vehicle. 	N/A	Yes
		<ul style="list-style-type: none"> All NRMMS operated on-site are approved or exempted (as the case may be) and affixed with the requisite approval/exemption labels under the Air Pollution Control (Non-road Mobile Machinery) (Emission) Regulation, or are in the process of application for such approval/exemption during the relevant grace period. 	Yes	Yes

Recommended Mitigation Measures for Noise Impact

PP Ref.	EM&A Ref.	Recommended Mitigation Measures	Mitigation Measures Implemented? ^ (Marine Section)	Mitigation Measures Implemented? ^ (Land Section)
S6.2.1	S5.2.1	<ul style="list-style-type: none"> Only well-maintained plant should be operated on-site and plant should be serviced regularly. 	Obs	Obs
		<ul style="list-style-type: none"> Silencers or mufflers on construction plant should be utilised. 	Yes	N/A
		<ul style="list-style-type: none"> Mobile plant should be sited as far away from sensitive uses as possible. 	Yes	Yes

	<ul style="list-style-type: none"> • Machines and plant that may be in intermittent use should be shut down between works periods or should be throttled down to a minimum. 	Yes	Yes
	<ul style="list-style-type: none"> • Plant known to emit noise strongly in one direction should, where possible, be orientated so that noise is directed away from the nearby sensitive uses. 	Yes	Yes
	<ul style="list-style-type: none"> • Material stockpiles and other structures such as site hoarding should be effectively utilised to screen noise from on-site construction activities. 	N/A	Yes
	<ul style="list-style-type: none"> • Noisy construction activities such as road breaking, should be scheduled to less sensitive hours during the day, e.g. midday. 	Yes	Yes

Recommended Mitigation Measures for Water Quality Impact

PP Ref.	EM&A Ref.	Recommended Mitigation Measures	Mitigation Measures Implemented? ^ (Marine Section)	Mitigation Measures Implemented? ^ (Land Section)
S6.3.1	S6.2.1	<ul style="list-style-type: none"> • Steel pile casing and watertight cofferdam should be installed at the pier site and seawater trapped inside the casing and cofferdam should be pumped out to generate a dry working environment prior to carrying out sediment excavation. 	Yes	N/A
S6.3.1	S6.2.1	<ul style="list-style-type: none"> • During dewatering of the cofferdam, appropriate desilting or sedimentation device should be provided on site for treatment before discharge. The Contractor should ensure discharge water from the sedimentation tank meeting the WPCO / TM-DSS requirements before discharge. 	Yes	N/A
S6.3.1- S6.3.2	S6.2.1	<ul style="list-style-type: none"> • To minimise any adverse water quality impact during the excavation of sediment, a funnel should be placed at the top of pile casing during excavation and silt curtains should be deployed to completely enclose the cofferdam and steel pile casing. Silt curtains should be deployed prior to installation of temporary platform on barge, cofferdam and steel pile casing. Silt curtains should only be removed after completion of pile caps and piers. The Contractor should be responsible for the design, installation and maintenance of the silt curtain to minimise the impacts on water quality. The design and specification of the silt curtains should be submitted by the Contractor to the Project Manager or Project Manager's Representative of AAHK for approval. The marine bridge piers should not be constructed at the same time to avoid adverse hydrodynamic impact due to flow blockage increase during the interim construction stages. All vessels should be sized such that adequate clearance is maintained between vessels and the sea bed at all states of the tide to ensure that undue turbidity is not generated by turbulence from vessel movement or propeller wash. 	Yes	N/A
S6.3.1	S6.2.1	<ul style="list-style-type: none"> • For in-situ construction method, concrete would be delivered from existing concrete batching plants off-site to avoid on site concrete batching activity. During the in-situ bridge deck concreting, the concrete should be pumped or lifted inside an enclosed container for concreting the deck. Tarpaulin plastic sheet should be mounted at the bottom of the temporary working platform for concreting to prevent concrete from falling to the sea. 	Yes	N/A

PP Ref.	EM&A Ref.	Recommended Mitigation Measures	Mitigation Measures Implemented? ^ (Marine Section)	Mitigation Measures Implemented? ^ (Land Section)
S6.3.1	S6.2.1	<ul style="list-style-type: none"> The marine works of the Project should be proactively planned and coordinated to avoid any concurrent marine works below seawater level with those of ITT-BVB to minimise cumulative water quality impact during construction phase. 	Yes	N/A
S6.3.1	S6.2.1	<ul style="list-style-type: none"> Surface run-off from construction sites should be discharged into storm drains via adequately designed sand/silt removal facilities such as sand traps, silt traps and sedimentation basins. Channels or earth bunds or sand bag barriers should be provided on site to properly direct stormwater to such silt removal facilities. Perimeter channels at site boundaries should be provided on site boundaries where necessary to intercept storm run-off from outside the site so that it will not wash across the site. Catchpits and perimeter channels should be constructed in advance of site formation works and earthworks. 	Yes	Obs / Rem
S6.3.1	S6.2.1	<ul style="list-style-type: none"> Silt removal facilities, channels and manholes should be maintained and the deposited silt and grit should be removed regularly, at the onset of and after each rainstorm to prevent local flooding. Before disposal at the public fill reception facilities, the deposited silt and grit should be solicited in such a way that it can be contained and delivered by dump truck instead of tanker truck. Any practical options for the diversion and re-alignment of drainage should comply with both engineering and environmental requirements in order to provide adequate hydraulic capacity of all drains. 	Yes	Yes
S6.3.1	S6.2.1	<ul style="list-style-type: none"> Construction works should be programmed to minimise soil excavation works in rainy seasons (April to September). If excavation in soil cannot be avoided in these months or at any time of year when rainstorms are likely, for the purpose of preventing soil erosion, temporary exposed slope surfaces should be covered e.g. by tarpaulin, and temporary access roads should be protected by crushed stone or gravel, as excavation proceeds. Intercepting channels should be provided (e.g. along the crest / edge of excavation) to prevent storm runoff from washing across exposed soil surfaces. Arrangements should always be in place in such a way that adequate surface protection measures can be safely carried out well before the arrival of a rainstorm. 	N/A	Yes
S6.3.1	S6.2.1	<ul style="list-style-type: none"> Earthworks final surfaces should be well compacted and the subsequent permanent work or surface protection should be carried out immediately after the final surfaces are formed to prevent erosion caused by rainstorms. Appropriate drainage like intercepting channels should be provided where necessary. 	N/A	Yes
S6.3.1	S6.2.1	<ul style="list-style-type: none"> Measures should be taken to minimise the ingress of rainwater into trenches. If excavation of trenches in wet seasons is necessary, they should be dug and backfilled in short sections. Rainwater pumped out from trenches or foundation excavations should be discharged into storm drains via silt removal facilities. 	N/A	Yes
S6.3.1	S6.2.1	<ul style="list-style-type: none"> Manholes (including newly constructed ones) should always be adequately covered and temporarily sealed so as to prevent silt, construction materials or debris from getting into the drainage system, and 	Yes	Obs

PP Ref.	EM&A Ref.	Recommended Mitigation Measures	Mitigation Measures Implemented? ^ (Marine Section)	Mitigation Measures Implemented? ^ (Land Section)
		to prevent storm run-off from getting into foul sewers. Discharge of surface run-off into foul sewers must always be prevented in order not to unduly overload the foul sewerage system.		
S6.3.1	S6.2.1	<ul style="list-style-type: none"> • Good site practices should be adopted to remove rubbish and litter from construction sites so as to prevent the rubbish and litter from spreading from the site area. It is recommended to clean the construction sites on a regular basis. Also, the following mitigation measures related to the transportation of the sediment should be implemented to minimise the potential water quality impact: <ul style="list-style-type: none"> • Loading of the excavated marine-based sediment to the barge shall be controlled to avoid splashing and overflowing of the sediment slurry to the surrounding water/ storm drains; • The barge/ dump truck transporting the excavated marine-based sediment/ land-based sediment to the designated disposal sites shall be equipped with tight fitting seals to prevent leakage and shall not be filled to a level that would cause overflow of materials or laden water during loading or transportation; and • Monitoring of the barge/ dump truck loading shall be conducted to ensure that loss of material does not take place during transportation. Transport barges or vessels/ dump truck shall be equipped with automatic self-monitoring devices as specified by the Director of Environmental Protection (DEP). 	N/A	Yes
S6.3.1	S6.2.1	<ul style="list-style-type: none"> • Water used in ground boring and drilling for site investigation or rock/soil anchoring should as far as practicable be re-circulated after sedimentation. When there is a need for final disposal, the wastewater should be discharged into storm drains via silt removal facilities. 	Yes	Yes
S6.3.1	S6.2.1	<ul style="list-style-type: none"> • All vehicles and plant should be cleaned before they leave a construction site to minimise the deposition of earth, mud, debris on roads. A wheel washing bay should be provided at every site exit if practicable and wash-water should have sand and silt settled out or removed before discharging into storm drains. The section of construction road between the wheel washing bay and the public road should be paved with backfall to reduce vehicle tracking of soil and to prevent site run-off from entering public road drains. 	N/A	Yes
S6.3.1	S6.2.1	<ul style="list-style-type: none"> • There is a need to apply to EPD for a discharge licence for discharge of effluent from the construction site under the WPCO. The discharge quality must meet the requirements specified in the discharge licence. All the runoff and wastewater generated from the works areas should be treated so that it satisfies all the standards listed in the TM-DSS. The beneficial uses of the treated effluent for other on-site activities such as dust suppression, wheel washing and general cleaning etc., can minimise water consumption and reduce the effluent discharge volume. If monitoring of the treated effluent quality from the works areas is required during the construction phase of the Project, the monitoring should be carried out in accordance with the relevant WPCO license. 	Yes	Obs / Rem
S6.3.1	S6.2.1	<ul style="list-style-type: none"> • No discharge of sewage to the storm water system and marine water will be allowed. Sufficient chemical toilets should be provided in the works areas to handle the sewage generated from the 	Yes	Yes

PP Ref.	EM&A Ref.	Recommended Mitigation Measures	Mitigation Measures Implemented? ^ (Marine Section)	Mitigation Measures Implemented? ^ (Land Section)
		construction workforce. A licensed waste collector should be deployed to clean the chemical toilets on a regular basis.		
S6.3.1	S6.2.1	<ul style="list-style-type: none"> Notices should be posted at conspicuous locations to remind the workers not to discharge any sewage or wastewater into the surrounding environment. Regular environmental audit of the construction site will provide an effective control of any malpractices and can encourage continual improvement of environmental performance on site. It is anticipated that sewage generation during the construction phase of the project would not cause water pollution problem after undertaking all required measures. 	Yes	Yes
S6.3.1	S6.2.1	<ul style="list-style-type: none"> Contractor must register as a chemical waste producer if chemical wastes would be produced from the construction activities. The Waste Disposal Ordinance (Cap 354) and its subsidiary regulations in particular the Waste Disposal (Chemical Waste) (General) Regulation, should be observed and complied with for control of chemical wastes. 	Yes	Yes
S6.3.1	S6.2.1	<ul style="list-style-type: none"> Any service shop and maintenance facilities should be located on hard standings within a bonded area, and sumps should be provided. Maintenance of vehicles and equipment involving activities with potential for leakage and spillage should only be undertaken within the areas appropriately equipped to control these discharges. 	Yes	Yes
S6.3.1	S6.2.1	<ul style="list-style-type: none"> Suitable containers should be used to hold the chemical wastes to avoid leakage or spillage during storage, handling and transport. Chemical waste containers should be suitably labelled, to notify and warn the personnel who are handling the wastes, to avoid accidents. Storage area should be selected at a safe location on site and adequate space should be allocated to the storage area. 	Obs	Obs

Recommended Mitigation Measures for Waste Management

PP Ref.	EM&A Ref.	Recommended Mitigation Measures	Mitigation Measures Implemented? ^ (Marine Section)	Mitigation Measures Implemented? ^ (Land Section)
S6.4.1- S6.4.2	S7.2.1	<u>Good Site Practices:</u> <ul style="list-style-type: none"> Nomination of approved personnel, such as a site manager, to be responsible for implementation of good site practices, arrangements for waste collection and effective disposal to an appropriate facility. Training of site personnel in site cleanliness, concepts of waste reduction, reuse and recycling, proper waste management and chemical waste handling procedures. Provision of sufficient waste reception/ disposal points, and regular collection of waste. 	Yes	Yes
			Yes	Yes
			Yes	Obs / Rem

PP Ref.	EM&A Ref.	Recommended Mitigation Measures	Mitigation Measures Implemented? ^ (Marine Section)	Mitigation Measures Implemented? ^ (Land Section)
		<ul style="list-style-type: none"> Adoption of appropriate measures to minimise windblown litter and dust during transportation of waste by either covering trucks or by transporting wastes in enclosed containers. 	Yes	Yes
		<ul style="list-style-type: none"> Provision of regular cleaning and maintenance programme for drainage systems and sumps. 	Yes	Yes
		<ul style="list-style-type: none"> Adoption of a recording system for the amount of wastes generated, recycled and disposed (including the disposal sites). 	Yes	Yes
		<ul style="list-style-type: none"> Preparation of Waste Management Plan (WMP), as part of the Environmental Management Plan (EMP). 	Yes	Yes
		<p><u>Waste Reduction Measures:</u></p> <ul style="list-style-type: none"> Segregate and store different types of construction related waste in different containers, skips or stockpiles to enhance reuse or recycling of materials and their proper disposal. 	Yes	Yes
		<ul style="list-style-type: none"> Provide separate labelled bins to segregate recyclable waste such as aluminium cans from other general refuse generated by the work force, and to encourage collection by individual collectors. 	N/A	N/A
		<ul style="list-style-type: none"> Recycle any unused chemicals or those with remaining functional capacity. 	N/A	N/A
S6.4.1	S7.2.1	<ul style="list-style-type: none"> Maximise the use of reusable steel formwork to reduce the amount of C&D materials. 	Yes	N/A
		<ul style="list-style-type: none"> Adopt proper storage and site practices to minimise the potential for damage to, or contamination of construction materials. 	Yes	Yes
		<ul style="list-style-type: none"> Plan the delivery and stock of construction materials carefully to minimise the amount of waste generated. 	Yes	Yes
		<ul style="list-style-type: none"> Minimise over ordering and wastage through careful planning during purchasing of construction materials. 	Yes	Yes
S6.4.1	S7.2.1	<p><u>C&D materials:</u></p> <ul style="list-style-type: none"> The C&D materials generated should be sorted on-site into inert C&D materials (that is, public fill) and non-inert (C&D waste). 	Yes	Yes
S6.4.1	S7.2.1	<ul style="list-style-type: none"> To minimise the impact resulting from collection and transportation of C&D materials as far as practicable, C&D waste, such as wood, plastic, steel and other metals should be reused or recycled and, as a last resort, disposed to landfill. 	N/A	N/A
S6.4.1	S7.2.1	<ul style="list-style-type: none"> Proper handling and storage of waste such as soil by means of covers and/or water spraying system to minimise the potential environmental impact and to prevent materials from wind-blown or being washed away. 	Yes	Yes
		<ul style="list-style-type: none"> Covering materials during heavy rainfall. 	N/A	Yes
		<ul style="list-style-type: none"> Locating stockpiles to minimise potential visual impacts. 	Yes	Yes

PP Ref.	EM&A Ref.	Recommended Mitigation Measures	Mitigation Measures Implemented? ^ (Marine Section)	Mitigation Measures Implemented? ^ (Land Section)
		<ul style="list-style-type: none"> Minimising land intake of stockpile areas as far as possible. 	N/A	Yes
		<ul style="list-style-type: none"> Adopting GPS or equivalent system for tracking and monitoring of all dump trucks engaged for the Project in recording their travel routings and parking locations to prohibit illegal dumping and landfilling of C&D materials. 	N/A	N/A
		<ul style="list-style-type: none"> Keeping record and analysis of data collected by GPS or equivalent system related to travel routings and parking locations of dump trucks engaged on site. 	Yes	N/A
		<p><u>General Refuse:</u></p> <ul style="list-style-type: none"> General refuse should be stored in covered bins or compaction units separately from C&D materials. A reputable waste collector should be employed by the Contractor to remove general refuse from the site regularly, separately from C&D materials. An enclosed and covered area is preferred to reduce the occurrence of “wind blown” light materials. 	Yes	Yes
S6.4.1	S7.2.1	<ul style="list-style-type: none"> The recyclable component of general refuse, such as aluminium cans, paper and cleansed plastic containers shall be separated from other waste. Provision and collection of recycling bins for different types of recyclable waste shall be set up by the Contractor. The Contractor shall also be responsible for arranging recycling companies to collect these materials. 	N/A	N/A
		<ul style="list-style-type: none"> The Contractor should carry out an education programme for workers in avoiding, reducing, reusing and recycling of materials generation. Posters and leaflets advising on the use of the bins should also be provided in the site as reminders. 	N/A	Yes
		<p><u>Chemical Waste:</u></p> <ul style="list-style-type: none"> If chemical wastes were to be produced, the Contractor would be required to register with the EPD as a Chemical Waste Producer, and to follow the guidelines stated in the <i>Code of Practice on the Packaging, Labelling and Storage of Chemical Wastes</i>. 	Yes	Yes
S6.4.1-S6.4.2	S7.2.1	<ul style="list-style-type: none"> Appropriate containers with proper labels should be used for storage of chemical wastes. Chemical wastes should be collected and delivered to designated outlet by a licensed collector. Chemical wastes (e.g. spent lubricant oil) should be recycled at an appropriate facility as far as possible, while the chemical waste that cannot be recycled should be disposed of at either the CWTC, or another licensed facility, in accordance with the Waste Disposal (Chemical Waste) (General) Regulation. 	Yes	Yes
		<ul style="list-style-type: none"> Any unused chemicals or those with remaining functional capacity should be collected for reuse as far as practicable. 	Yes	N/A
		<ul style="list-style-type: none"> Trip ticket system shall be implemented to prevent illegal dumping in accordance with the “Trip Ticket System for Disposal of Construction and Demolition Materials”. 	Yes	Yes

PP Ref.	EM&A Ref.	Recommended Mitigation Measures	Mitigation Measures Implemented? ^ (Marine Section)	Mitigation Measures Implemented? ^ (Land Section)
S6.4.1 & S6.4.3	S7.2.1	<p><u>Sediment:</u></p> <ul style="list-style-type: none"> The sediment should be excavated, handled, treated, transported and/or disposed of in a manner that would minimise adverse environmental impacts. 	N/A	Yes
		<ul style="list-style-type: none"> Relevant ordinances (such as Waste Disposal Ordinance, Air Pollution Ordinance (Construction Dust) Regulation and Water Pollution Control Ordinance) shall be complied with during the excavation and handling of the sediment. 	N/A	Yes
		<ul style="list-style-type: none"> The temporary stockpiling area should be placed within earth bunds or sand bags to prevent leachate from entering the ground, nearby drains and surrounding water bodies. The temporary stockpiling area should be completely paved in order to avoid contamination to underlying soil or groundwater. Separate and clearly defined areas should be provided for stockpiling of contaminated and uncontaminated materials. Leachate, if any, should be collected, treated and discharged according to the Water Pollution Control Ordinance (WPCO). In order to minimise the exposure to contaminated materials, workers shall, if necessary, wear appropriate personal protective equipments (PPE) when handling contaminated sediments. Adequate washing and cleaning facilities shall also be provided on site. 	N/A	N/A
S6.4.1	S7.2.1	<ul style="list-style-type: none"> For off-site disposal, the basic requirements and procedures specified under PNAP No. 252 (ADV-21) shall be followed. Marine Fill Committee (MFC) of CEDD is managing the disposal facilities in Hong Kong for the excavated sediment, while EPD is the authority of issuing marine dumping permit under the Dumping at Sea Ordinance (DASO). 	N/A	N/A
S6.4.1, 6.4.3	S7.2.1	<ul style="list-style-type: none"> For the purpose of site allocation and application of marine dumping permit and if considered necessary by Dumping at Sea Ordinance (DASO) Team/EPD, separate submissions (e.g. SSTP/SQR) shall be submitted to DASO team/EPD for agreement under DASO. Additional SI works, based on the SSTP, shall then be carried out in order to confirm the disposal arrangements of the excavated sediment. A Sediment Quality Report (SQR), reporting the chemical and biological screening results and the estimated quantities of sediment under different disposal options, shall then be submitted to DASO team/EPD for agreement under DASO. 	N/A	N/A
		<ul style="list-style-type: none"> To ensure disposal space is allocated for the Project, the Project Proponent should be responsible for obtaining agreement from MFC on the allocation of the disposal site. The contractor(s), on the other hand, should be responsible for the application of the marine dumping permit under DASO from EPD for the sediment disposal. 	N/A	N/A
S6.4.1	S7.2.1	<ul style="list-style-type: none"> The excavated sediments is expected to be loaded onto the barge and transported to the designated disposal sites allocated by MFC. The excavated sediment would be disposed of according to its determined disposal options and PNAP No. 252 (ADV-21). 	N/A	N/A
		<ul style="list-style-type: none"> Stockpiling of contaminated sediments should be avoided as far as possible. If temporary stockpiling of contaminated sediments is necessary, the excavated sediment should be covered and the area 	N/A	Yes

PP Ref.	EM&A Ref.	Recommended Mitigation Measures	Mitigation Measures Implemented? ^ (Marine Section)	Mitigation Measures Implemented? ^ (Land Section)
		<p>should be placed within earth bunds or sand bags to prevent leachate from entering the ground, nearby drains and surrounding water bodies. The stockpiles area should be completely paved in order to avoid contamination to underlying soil or groundwater. Separate and clearly defined areas should be provided for stockpiling of contaminated and uncontaminated materials. Leachate, if any, should be collected and discharged according to the Water Pollution Control Ordinance (WPCO).</p>		
		<ul style="list-style-type: none"> In order to minimise the potential odour / dust emissions during excavation and transportation of the sediment, the excavated sediments shall be wetted during excavation / material handling and shall be properly covered when placed on trucks or barges. Loading of the excavated sediment to the barge/ dump truck shall be controlled to avoid splashing and overflowing of the sediment slurry to the surrounding water/ storm drains. 	N/A	Yes
		<ul style="list-style-type: none"> The barge/ dump truck transporting the sediments to the designated disposal sites shall be equipped with tight fitting seals to prevent leakage and shall not be filled to a level that would cause overflow of materials or laden water during loading or transportation. In addition, monitoring of the barge/ dump truck loading shall be conducted to ensure that loss of material does not take place during transportation. Transport barges or vessels/ dump truck shall be equipped with automatic self-monitoring devices as specified by the DEP. 	N/A	Yes
S6.4.1	S7.2.1	<p><u>Potential Floating Refuse:</u></p> <ul style="list-style-type: none"> Proper management and education should be given to construction site workers such that accidental release or intentional disposal would be avoided. The refuse should be stored in enclosed bin to avoid adverse impacts to the surroundings including marine environment. Regular checking should also be carried out to ensure that the refuse is stored properly. 	Yes	Yes

Recommended Mitigation Measures for Marine Ecological Impact

PP Ref.	EM&A Ref.	Recommended Mitigation Measures	Mitigation Measures Implemented? ^ (Marine Section)	Mitigation Measures Implemented? ^ (Land Section)
-	-	<ul style="list-style-type: none"> No underwater percussive piling shall be conducted in this Project 	Yes	N/A
S6.5.1	S8.2.1	<ul style="list-style-type: none"> Based upon a precautionary approach, a speed limit of 10 knots should be strictly enforced on all construction-related vessels. 	Yes	N/A
S6.5.1	S8.2.1	<ul style="list-style-type: none"> Good site practices, guidelines and mitigation measures detailed in Water Quality Sections 6.3.1 of the Project Profile should be adopted to further alleviate water quality impacts. 	Yes	N/A

Recommended Mitigation Measures for Landscape and Visual Impact

PP Ref.	EM&A Ref.	Recommended Mitigation Measures	Mitigation Measures Implemented? ^ (Marine Section)	Mitigation Measures Implemented? ^ (Land Section)
S6.6.1	S9.3.1	<ul style="list-style-type: none"> All affected trees will be felled and compensated, no transplantation is required. 	N/A	Yes
S6.6.1	S9.3.1	<ul style="list-style-type: none"> Optimising construction activities, e.g. minimising extent of temporary works area, installing site hoardings and minimising illumination on non-target areas. 	Yes	Yes
S6.6.1	S9.3.1	<ul style="list-style-type: none"> Minimise construction periods where possible. 	Yes	Yes
S6.6.1	S9.3.1	<ul style="list-style-type: none"> Early establishment of planting areas as far as appropriate. 	N/A	Yes
S6.6.1	S9.3.1	<ul style="list-style-type: none"> Erection of decorative mesh screen or construction hoardings. 	N/A	Yes
S6.6.1	S9.3.1	<ul style="list-style-type: none"> Control of night-time lighting. 	N/A	N/A
S6.6.1	S9.3.1	<ul style="list-style-type: none"> Temporary vertical greening, screen / buffer at-grade planting to soften the engineering structure of construction works. 	N/A	N/A
S6.6.1	S9.3.1	<ul style="list-style-type: none"> Tree preservation in accordance with Development Bureau Technical Circular (Works) No. 4/2020 (ref: DEVB(GLTM) 200/2/1/1). 	N/A	Yes
S6.6.1	S9.3.1	<ul style="list-style-type: none"> Proposed tree felling / tree compensation. 	N/A	Yes

Others

PP Ref.	EM&A Ref.	Recommended Mitigation Measures	Mitigation Measures Implemented? ^ (Marine Section)	Mitigation Measures Implemented? ^ (Land Section)
-	-	<ul style="list-style-type: none"> A copy of the valid Environmental Permit shall be displayed conspicuously on the Project site(s) at all vehicular site entrances/exits or at a convenient location for public's information at all times. The most updated information about the Permit, including any amended Permit, shall be displayed at such locations. If the Permit Holder surrenders a part or whole of the Permit, the notice he send to the Director shall also be displayed at the same locations as the original Permit. The suspended, varied or cancelled Permit shall be removed from display at the Project site(s). 	Yes	Yes
-	-	<ul style="list-style-type: none"> The required licences should be obtained by the Contractor (including CNP (if any), WPCO licence, etc. 	Yes	Yes

Notes:

Yes = Implemented where applicable

Obs/Rem = Observations or reminders were issued, and items were rectified

N/A = Not applicable to the construction works implemented during the reporting period

^ = Checked by ET through site inspection and record provided by the Contractor