



**Hong Kong - Zhuhai - Macao
Bridge Hong Kong Boundary
Crossing Facilities -
The Road Connection
Between HKBCF and the
Airport, Chek Lap Kok**

Management Organization

June 2024

Mott MacDonald
3/F Manulife Place
348 Kwun Tong Road
Kwun Tong
Kowloon
Hong Kong

T +852 2828 5757
mottmac.hk

Airport Authority Hong Kong

Hong Kong - Zhuhai - Macao Bridge Hong Kong Boundary Crossing Facilities - The Road Connection Between HKBCF and the Airport, Chek Lap Kok

Management Organization

June 2024

**This Submission of Management Organization has been
reviewed and certified by the Environmental Team Leader (ETL)
in accordance with Condition 2.3 of
Further Environmental Permit No. FEP-01/353/2009/K.**

Certified by:



Heidi Yu
Environmental Team Leader (ETL)
Mott MacDonald Hong Kong Limited

Date 2 July 2024

Our Ref : 60440482/C/JCHL240307

By Email

Airport Authority Hong Kong
HKIA Tower, 1 Sky Plaza Road
Hong Kong International Airport
Lantau, Hong Kong

Attn: Mr. Lawrence Tsui, Principal Manager, Environmental Compliance

3 July 2024

Dear Sir,

Hong Kong – Zhuhai – Macao Bridge Hong Kong Boundary Crossing Facilities – The Road Connection Between HKBCF and the Airport, Chek Lap Kok - Independent Environmental Checker Consultancy Services

Management Organization

We refer to the Management Organization submitted and certified by the ET Leader on 2 July 2024.

We would like to inform you that we have no adverse comment on the captioned submission. Therefore we write to verify the captioned submission in accordance with the requirement stipulated in Condition 2.3 of Further Environmental Permit No.: FEP-01/353/2009/K.

Should you have any query, please feel free to contact the undersigned at 3856 5312.

Yours faithfully,
AECOM Asia Co. Ltd.



Jackel Law
Independent Environmental Checker

Contents

| | | |
|-------------|--|---|
| 1 | Introduction | 1 |
| 2 | Management Organization of the Main Construction Company | 2 |
| 3 | Management Organization of the Environmental Team | 3 |
| 4 | Management Organization of the Independent Environmental Checker | 4 |
| Appendix A. | Organization Chart of the Contractor | 5 |
| Appendix B. | Organization Chart of the ET and IEC | 7 |

Tables

| | | |
|------------|--|---|
| Table 2.1: | Contact Information of Key Personnel of Contractor | 2 |
| Table 3.1: | Contact Information of ET | 3 |
| Table 4.1: | Contact Information of IEC | 4 |

1 Introduction

In accordance with Section 12 of the Environmental Impact Assessment Ordinance (EIAO), a Further Environmental Permit (EP No. FEP-01/353/2009/K) for the construction of the road connection between Hong Kong-Zhuhai-Macao Bridge (HZMB) Hong Kong Boundary Crossing Facilities (HKBCF) and the Airport, Chek Lap Kok (hereinafter referred to as “the Project”) was granted to Airport Authority Hong Kong (AAHK) in December 2018.

Pursuant to Condition 2.3 of the FEP, AAHK should inform the Director of Environmental Protection (the Director) in writing the management organization of the main construction companies and/or any form of joint ventures associated with the construction of the corresponding part of the Project.

The Management Organization includes the following information:

- a) The management organization of the main construction companies and/or any form of joint ventures associated with the construction of the Project (in **Section 2**),
- b) The management organization of the Environmental Team (ET) (in **Section 3**),
- c) The management organization of the Independent Environmental Checker (IEC) (in **Section 4**), and
- d) Organization charts, names of responsible persons, and their contact details.

2 Management Organization of the Main Construction Company

Gammon Engineering & Construction Company Limited is appointed to undertake the construction work of the Project. The names of the responsible persons and their contact details of the contractor are set out in **Table 2.1** below.

Table 2.1: Contact Information of Key Personnel of Contractor

| Party | Position | Name | Telephone | Email |
|---|-----------------------|---------------|-----------|--------------------------------------|
| Gammon Engineering & Construction Limited | Project Director | Richard Ellis | 6201 5637 | Richard.Ellis@gammonconstruction.com |
| | Environmental Officer | Carrie Kwan | 9276 0551 | KaHei.Kwan@gammonconstruction.com |

Appendix A presents the organization chart of the contractor as required under FEP Condition 2.3.

3 Management Organization of the Environmental Team

The name and contact details of the Environmental Team (ET) Leader are set out in **Table 3.1** below:

Table 3.1: Contact Information of ET

| Position | Name | Telephone | Email |
|-----------|----------|-----------|----------------------|
| ET Leader | Heidi Yu | 2828 5704 | Heidi.Yu@mottmac.com |

Appendix B presents an organization chart of the ET as required under FEP Condition 2.3.

4 Management Organization of the Independent Environmental Checker

The name and contact details of the Independent Environmental Checker (IEC) are set out in **Table 4.1** below:

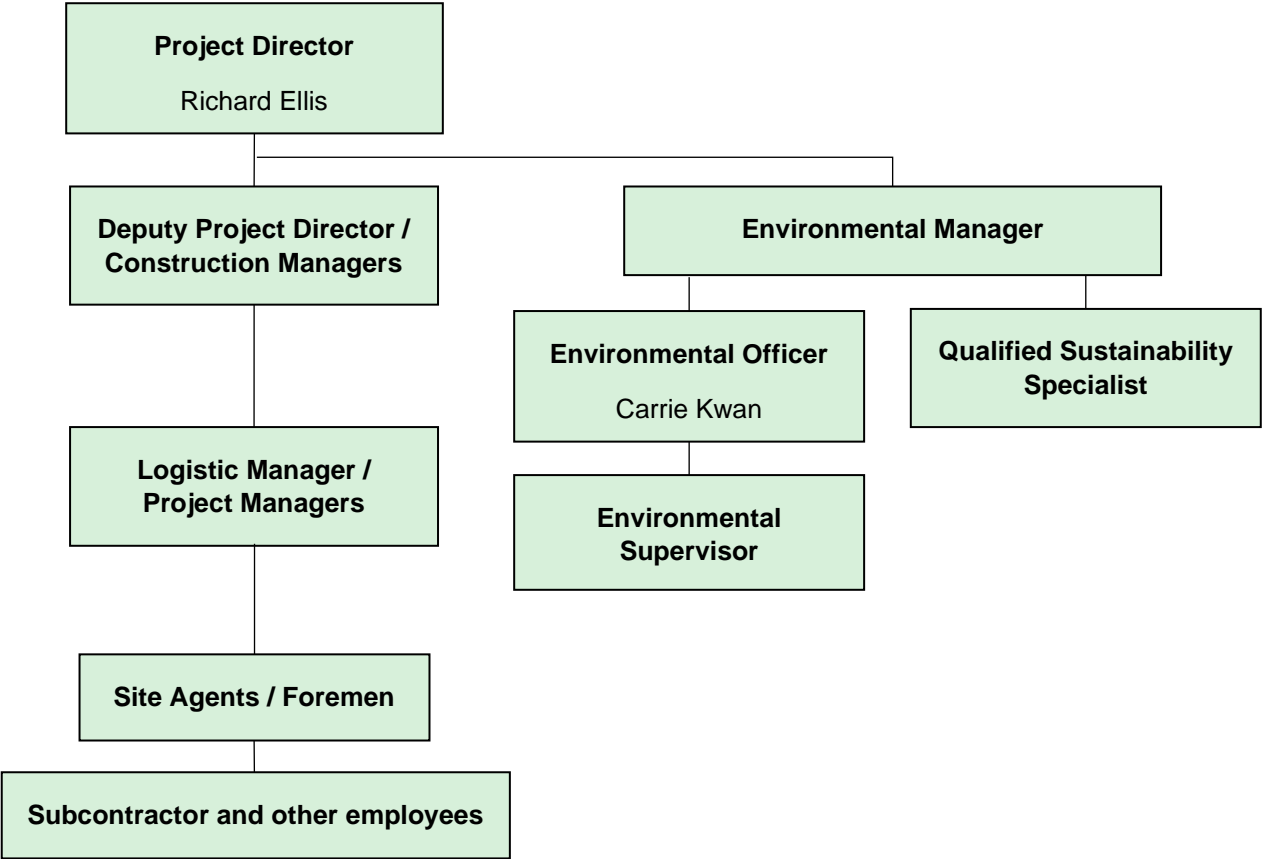
Table 4.1: Contact Information of IEC

| Position | Name | Telephone | Email |
|----------|------------|-----------|----------------------|
| IEC | Jackel Law | 3856 5312 | Jackel.Law@aecom.com |

Appendix B presents an organization chart of the IEC as required under FEP Condition 2.3.

Appendix A. Organization Chart of the Contractor

Organization Chart of Gammon Engineering & Construction Company Limited



Appendix B. Organization Chart of the ET and IEC

Organization Chart of ET and IEC

