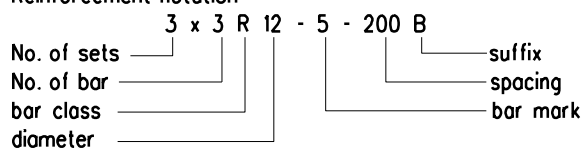


GENERAL NOTES :

1. The petrol interceptor is designed to provide at least 20 minutes retention to 5-10% of the maximum runoff collected by the transport interchange in a 1 in 2 year rainstorm.
2. Details of petrol interceptor shown in these drawing is for open space public transport interchange. For petrol interceptor at covered public transport interchange see CEO Standard Drawing CE1041.
3. All dimensions are in millimetres.
4. Concrete to be grade 30/20.
5. Reinforcement shall comply to BS4449 and shall be bent in accordance with BS4466.
6. Cover to reinforcement to be 50mm unless otherwise specified.
7. Reinforcement notation :



bar class : R - GRADE 250 PLAIN ROUND STEEL BAR
 suffix : T - TOP
 B - BOTTOM
 NF - NEAR FACE
 FF - FAR FACE
 EF - EACH FACE

8. Minimum lap length : 40 diameter of bar for mild steel plain bar.
9. Structural steelwork shall be grade 43C comply with BS4360 unless otherwise specified.
10. All fillet welds to be 6mm unless otherwise specified.
11. Stainless steel access ladder to be of minimum grade 304 S12 to BS970:PT1:1983.
12. For RSJ connections, see DSD Standard Drawing DS1031.
13. For details of treatment to the top of petrol interceptor, see DSD Standard Drawing DS1032 for flexible road surface and Highway Standard Drawing H1111 & H1112 for concrete road slab.
14. For details of cover to petrol interceptor, see DSD Standard Drawing DS1033.
15. For details of desilting opening cover, see DSD Standard drawing DS1034.

| | | | |
|------|--|-----------|---------|
| | Former drg. no. H3028/1A with general revision | | June 94 |
| REF. | REVISION | SIGNATURE | DATE |

**PETROL INTERCEPTOR
 FOR OPEN PUBLIC
 TRANSPORT INTERCHANGE
 (SHEET 1 OF 11)**

HIGHWAYS DEPARTMENT

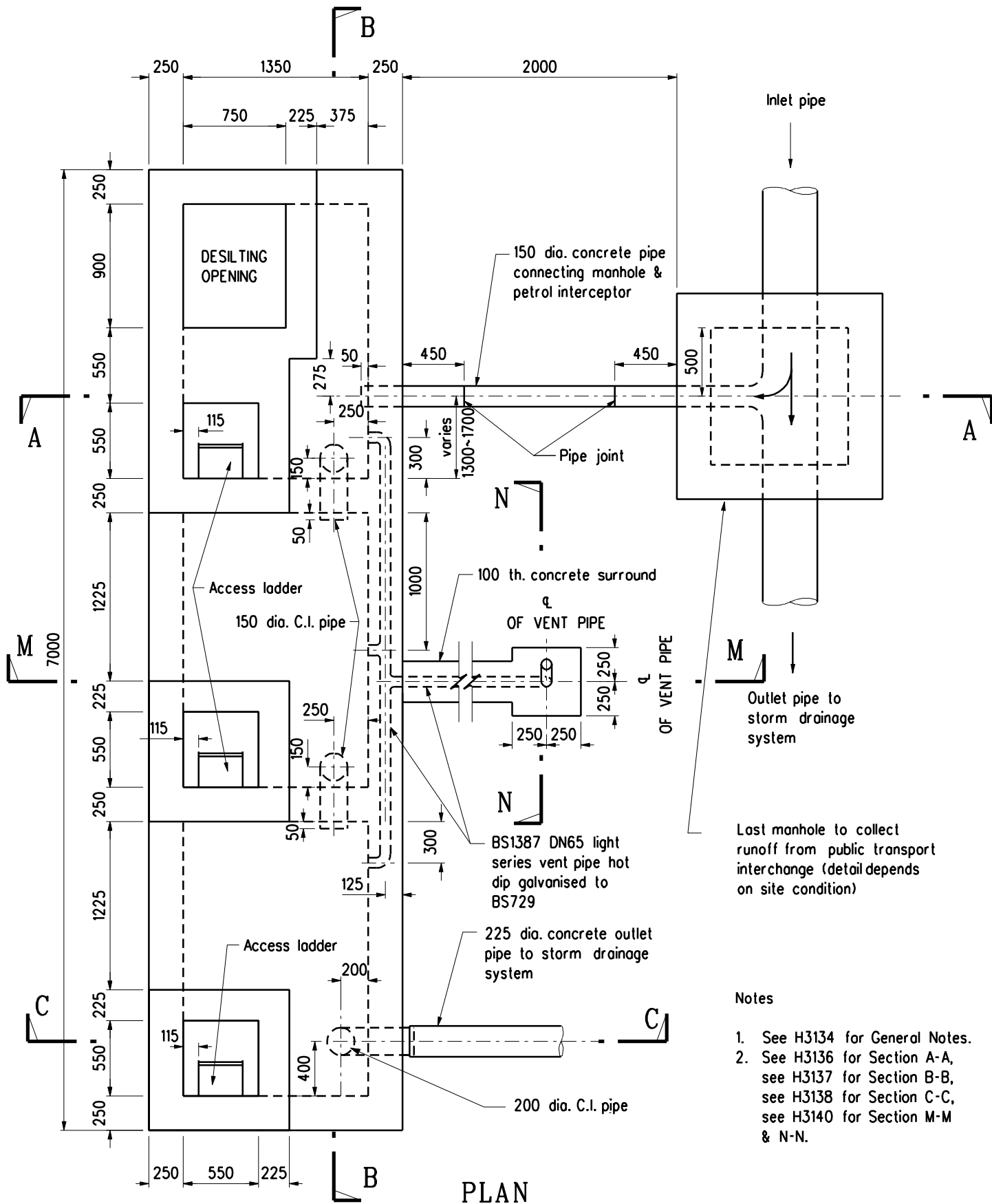
REFERENCE

DRAWING No.

CAD

SCALE

H 3134



3 compartment petrol interceptor shown, for required no. of compartments, see table 1 in drg. no. H3136

- Notes
1. See H3134 for General Notes.
 2. See H3136 for Section A-A, see H3137 for Section B-B, see H3138 for Section C-C, see H3140 for Section M-M & N-N.

| | | | |
|--|----------|-----------|------|
| Former drg. no. H3028/2A with general revision | | June 94 | |
| REF. | REVISION | SIGNATURE | DATE |

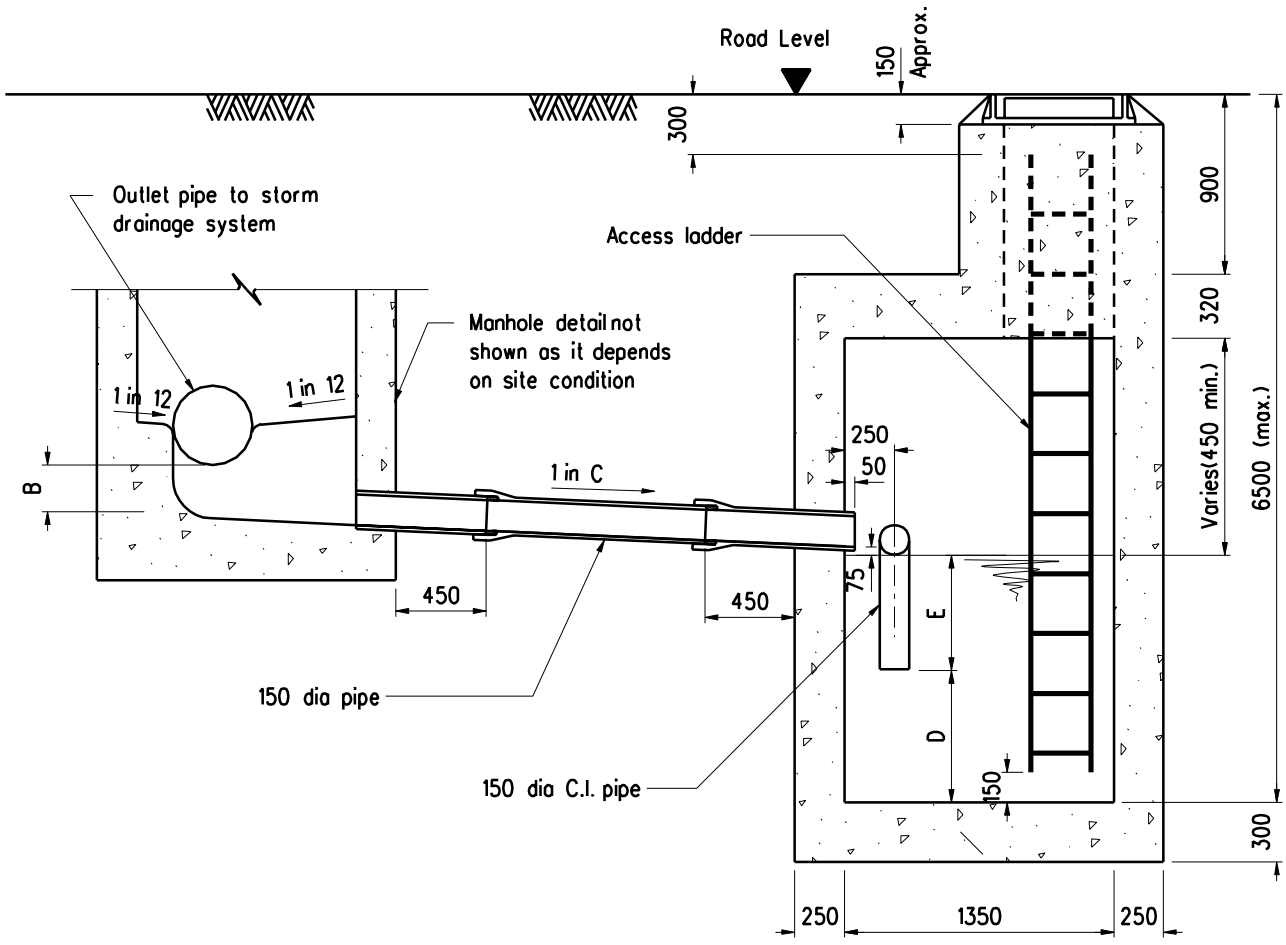
**PETROL INTERCEPTOR
FOR OPEN PUBLIC
TRANSPORT INTERCHANGE
(SHEET 2 OF 11)**

HIGHWAYS DEPARTMENT

| | | |
|-----------------------|-------------|-----|
| REFERENCE | DRAWING No. | CAD |
| SCALE Diagrammatic | H 3135 | |

| CATCHMENT AREA OF THE PUBLIC TRANSPORT INTERCHANGE A (m ²) | LEVEL DIFFERENCE OF THE 2 OUTLET PIPES IN THE LAST MANHOLE B (mm) | FALL OF INLET AND OUTLET PIPE OF PETROL INTERCEPTOR C | D (mm) | E (mm) | NO. OF COMPARTMENT |
|--|--|--|-------------|-------------|--------------------|
| A ≤ 1000 | 60 | 200 | 500 | 400 | 2 |
| 1000 < A ≤ 2000 | 90 | 200 | 600 | 400 | 3 |
| 2000 < A ≤ 3000 | 150 | 200 | 550 | 600 | 4 |
| 3000 < A ≤ 4000 | 150 | 100 | 725 | 600 | 4 |

TABLE 1



SECTION A - A

Note :

See H3134 for general notes.

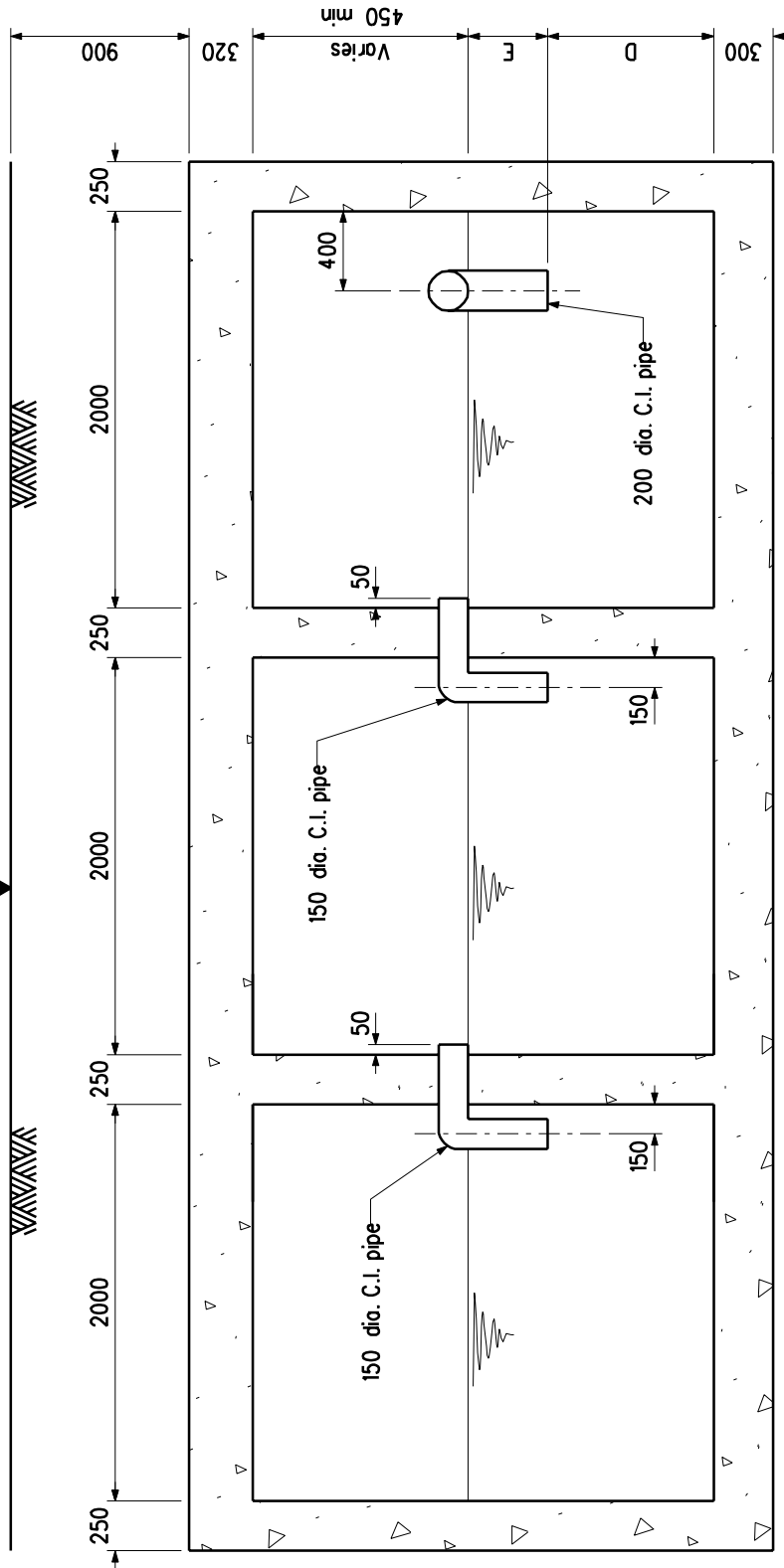
| | | | |
|------|--|-----------|---------|
| REF. | Former drg. no. H3028/3A with general revision | SIGNATURE | DATE |
| | REVISION | | June 94 |

PETROL INTERCEPTOR
FOR OPEN PUBLIC
TRANSPORT INTERCHANGE
(SHEET 3 OF 11)

HIGHWAYS DEPARTMENT

| | | |
|--------------|-------------|-----|
| REFERENCE | DRAWING No. | CAD |
| SCALE | H 3136 | |
| Diagrammatic | | |

Road Level



SECTION B - B

(3 compartment petrol interceptor shown)

Note :

See H3134 for general notes.

| | | | |
|------|--|-----------|---------|
| | Former drg. no. H3028/4A with general revision | | June 94 |
| REF. | REVISION | SIGNATURE | DATE |

PETROL INTERCEPTOR
FOR OPEN PUBLIC
TRANSPORT INTERCHANGE
(SHEET 4 OF 11)

HIGHWAYS DEPARTMENT

REFERENCE

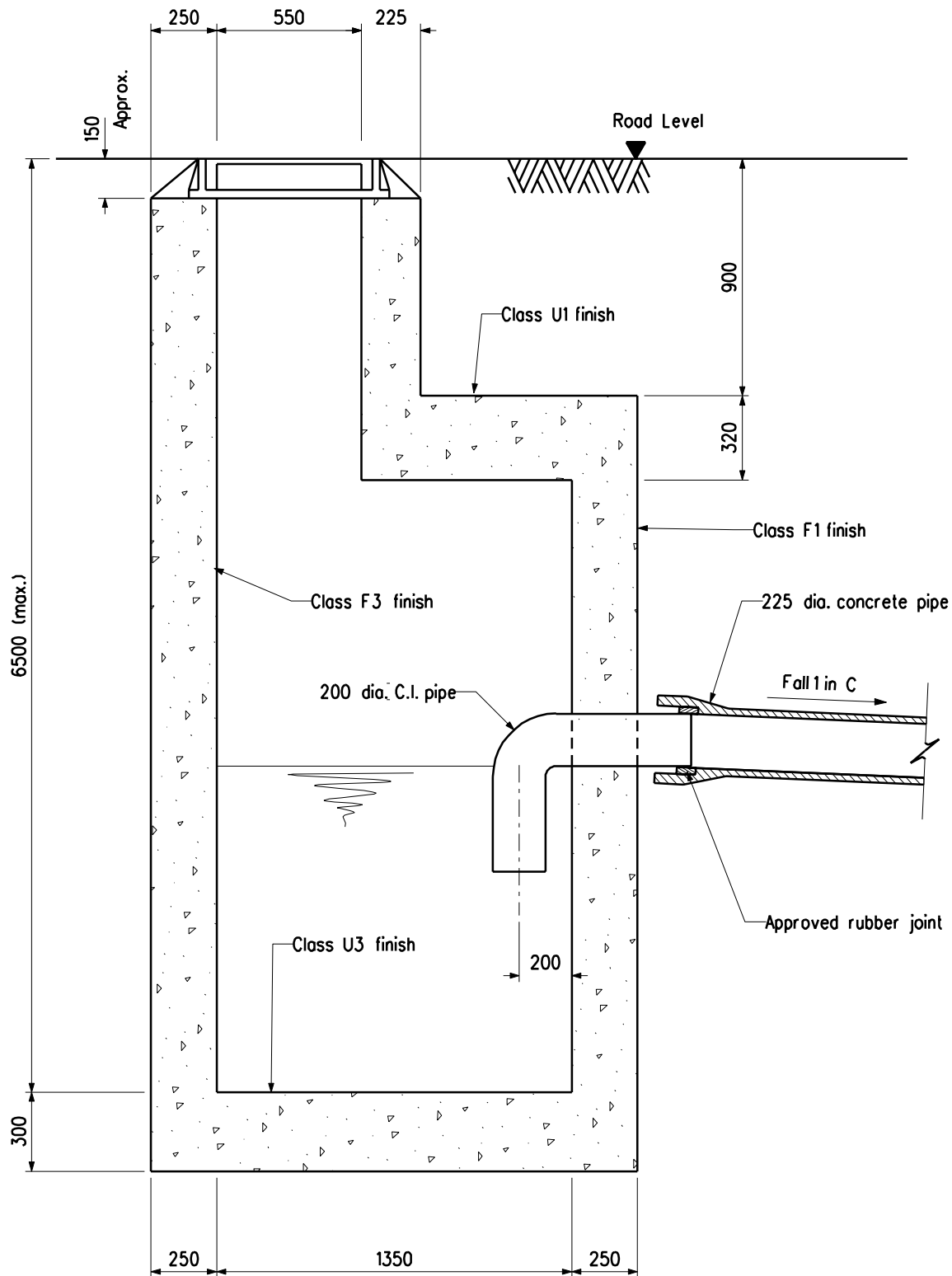
DRAWING No.

CAD

SCALE

Diagrammatic

H 3137



SECTION C - C

Note :

See H3134 for general notes.

| | | | |
|------|--|-----------|---------|
| | Former drg. no. H3028/5A with general revision | | June 94 |
| REF. | REVISION | SIGNATURE | DATE |

PETROL INTERCEPTOR
FOR OPEN PUBLIC
TRANSPORT INTERCHANGE
(SHEET 5 OF 11)

HIGHWAYS DEPARTMENT

REFERENCE

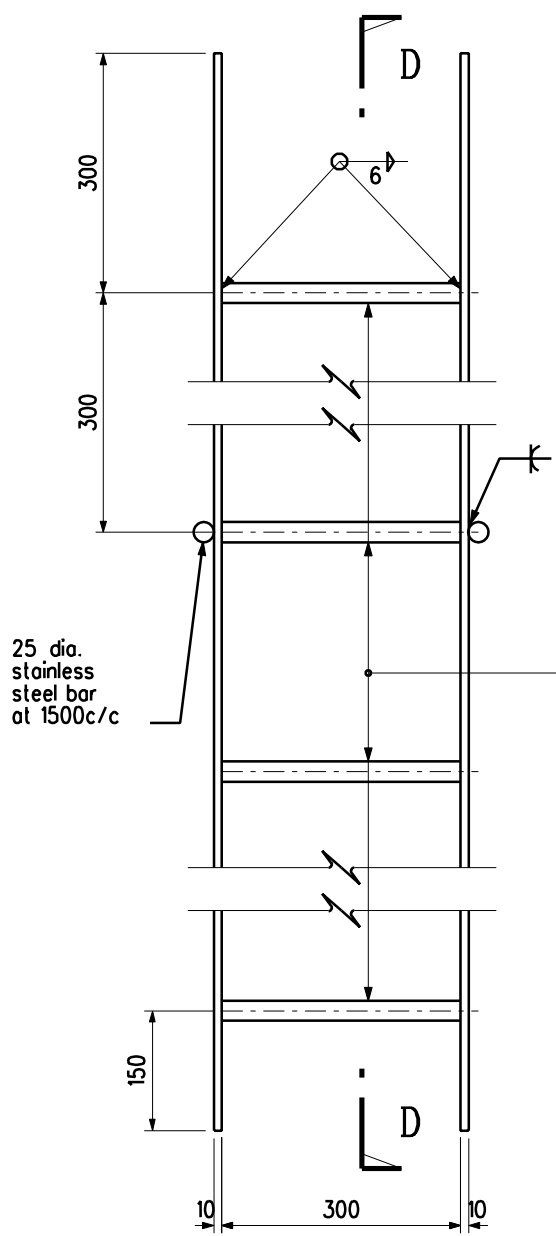
DRAWING No.

CAD

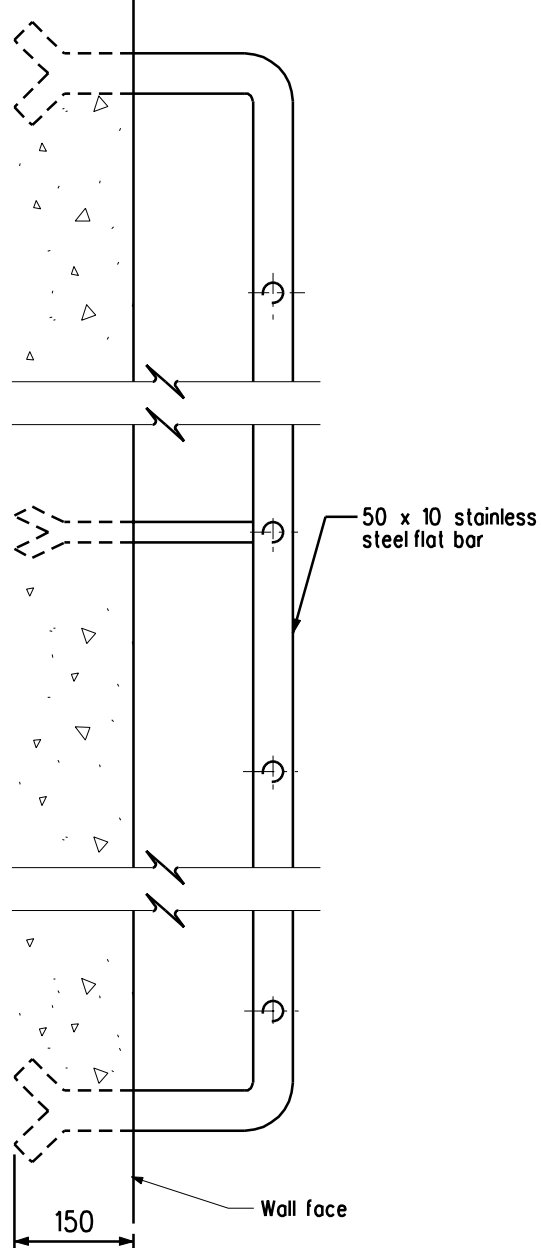
SCALE

1:25

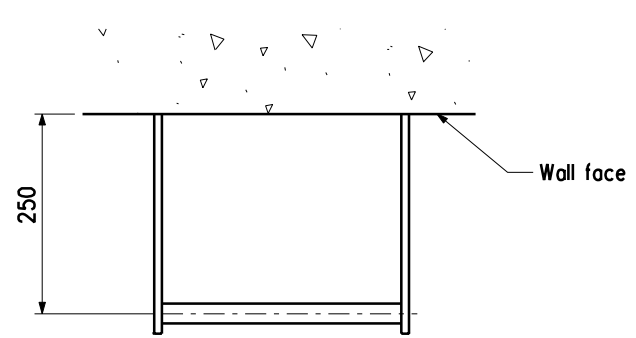
H 3138



ELEVATION



SECTION D - D



PLAN

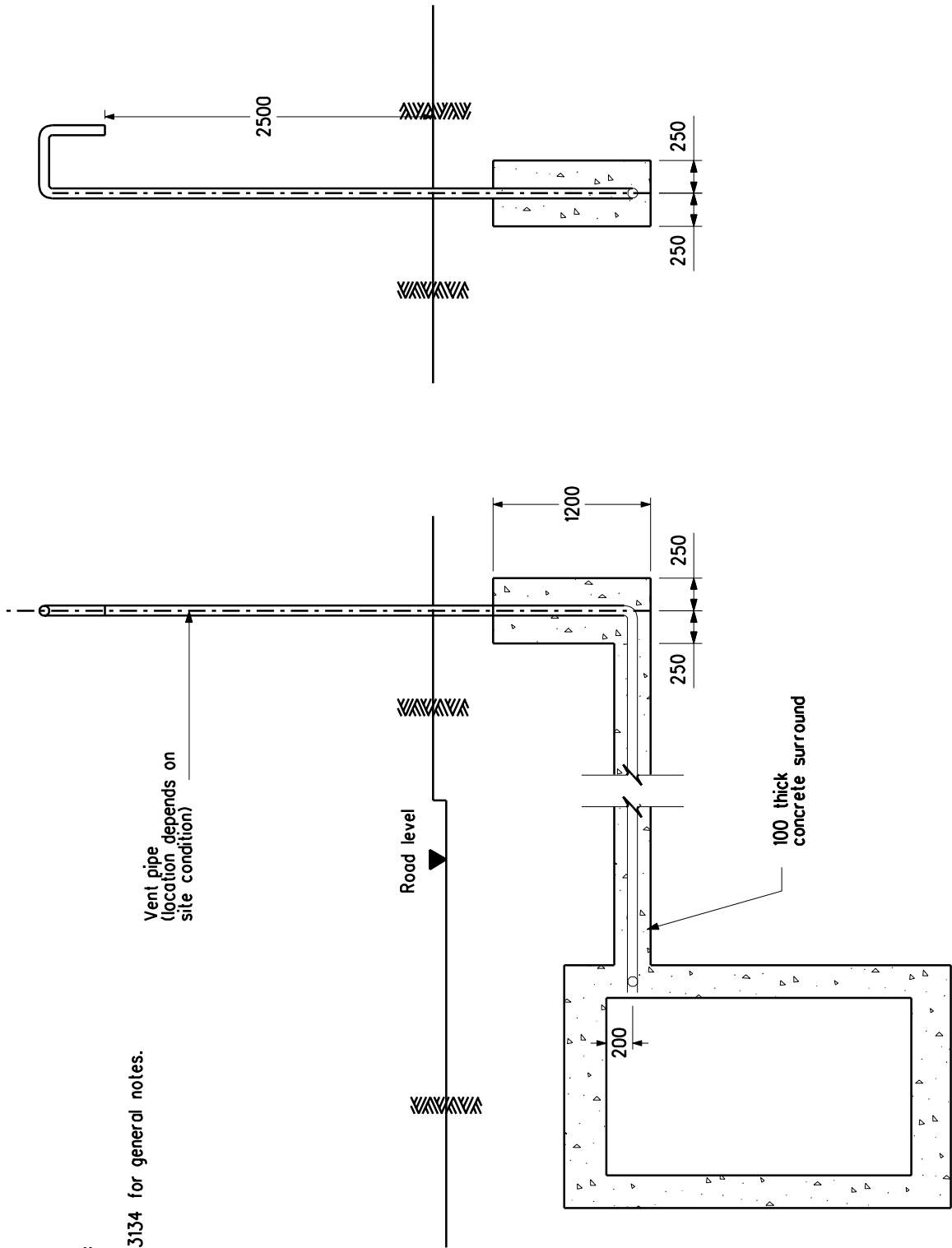
ACCESS LADDER

Note :
See H3134 for general notes

PETROL INTERCEPTOR
FOR OPEN PUBLIC
TRANSPORT INTERCHANGE
(SHEET 6 OF 11)

| | | | |
|--|----------|-------------|------|
| Former drg. no. H3028/6A with general revision | | June 94 | |
| REF. | REVISION | SIGNATURE | DATE |
| REFERENCE | | DRAWING No. | CAD |
| SCALE 1 : 10 | | H 3139 | |

HIGHWAYS DEPARTMENT



Note :
See H3134 for general notes.

Vent pipe
(location depends on
site condition)

Road level

100 thick
concrete surround

SECTION N - N

SECTION M - M

| | | | |
|------|--|-----------|---------|
| | Former drg. no. H3028/7A with general revision | | June 94 |
| REF. | REVISION | SIGNATURE | DATE |

PETROL INTERCEPTOR
FOR OPEN PUBLIC
TRANSPORT INTERCHANGE
(SHEET 7 OF 11)

HIGHWAYS DEPARTMENT

REFERENCE

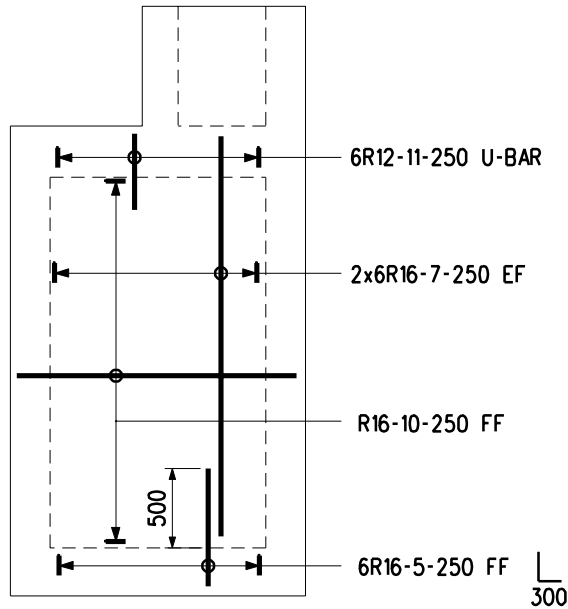
DRAWING No.

CAD

SCALE

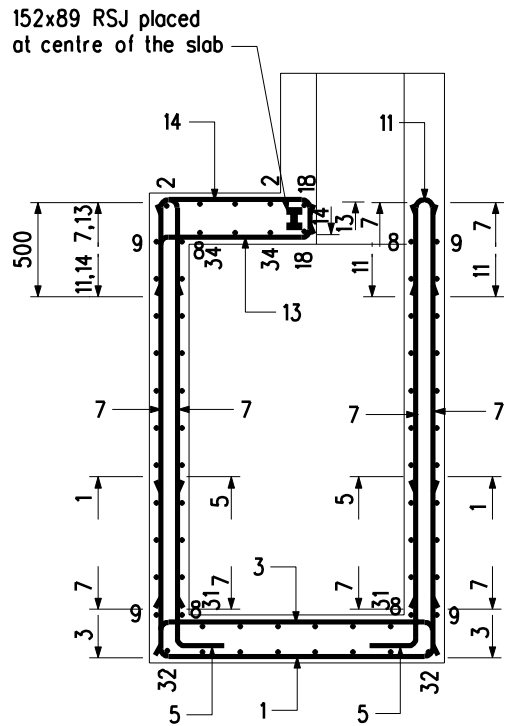
Diagrammatic

H 3140

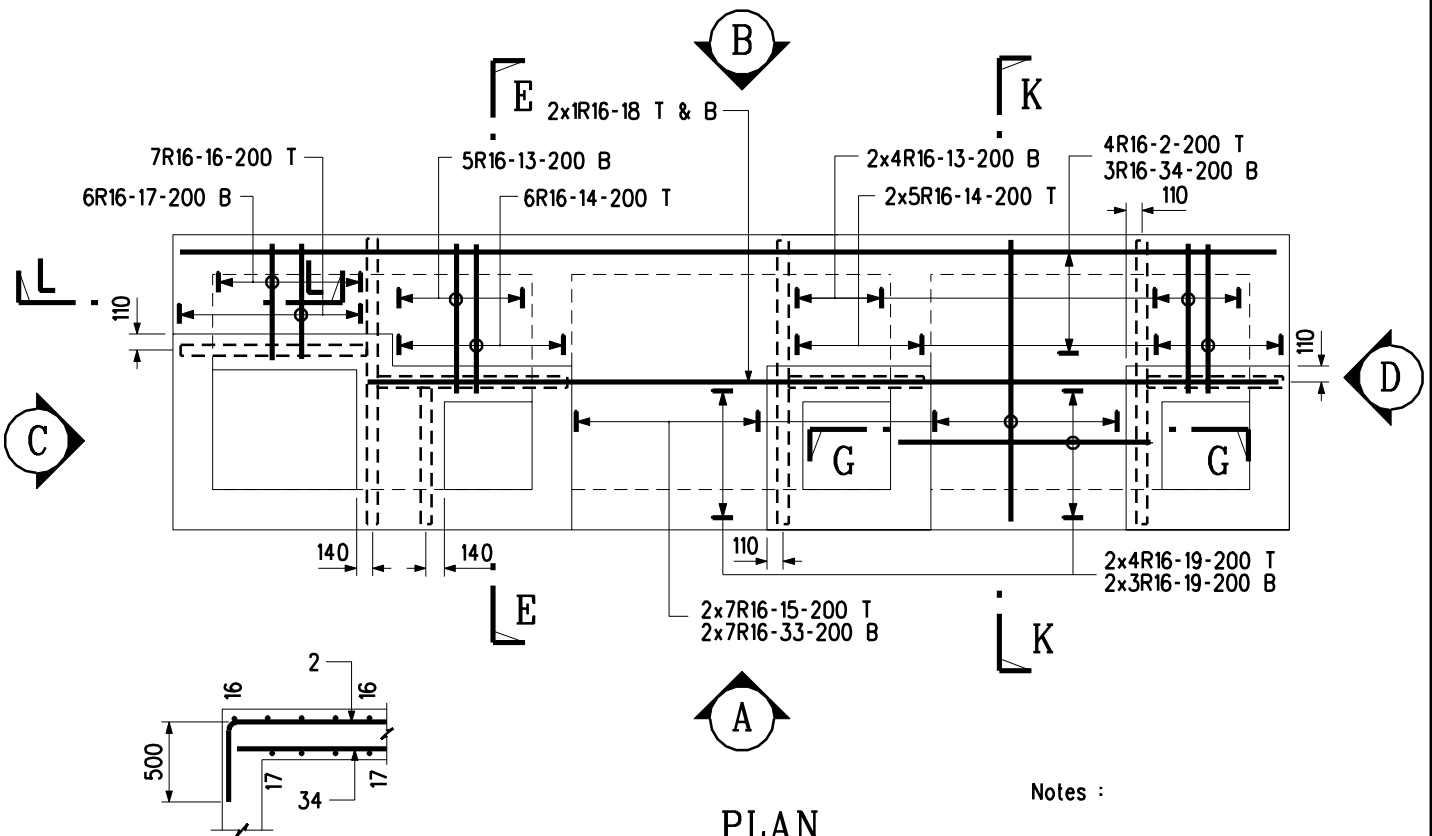


VIEW C

view D similar but opp. handed



SECTION E - E



PLAN

SECTION L - L

wall bars not shown for clarity

Notes :

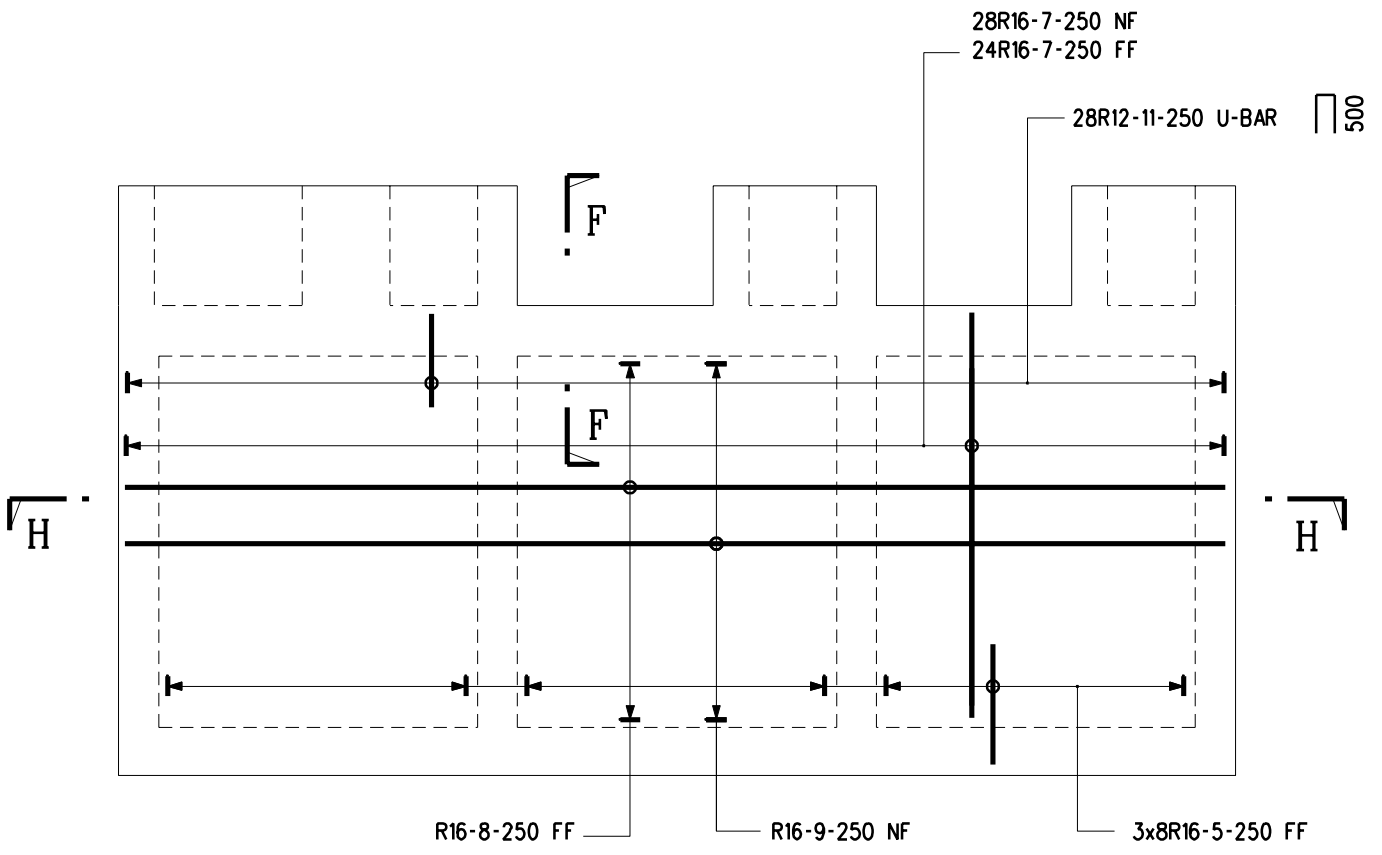
1. See H3134 for general notes.
2. See H3142 for Section K-K.
3. See H3143 for Section G-G.

| | | | |
|------|--|-----------|---------|
| | Former drg. no. H3028/8A with general revision | | June 94 |
| REF. | REVISION | SIGNATURE | DATE |

PETROL INTERCEPTOR
FOR OPEN PUBLIC
TRANSPORT INTERCHANGE
(SHEET 8 OF 11)

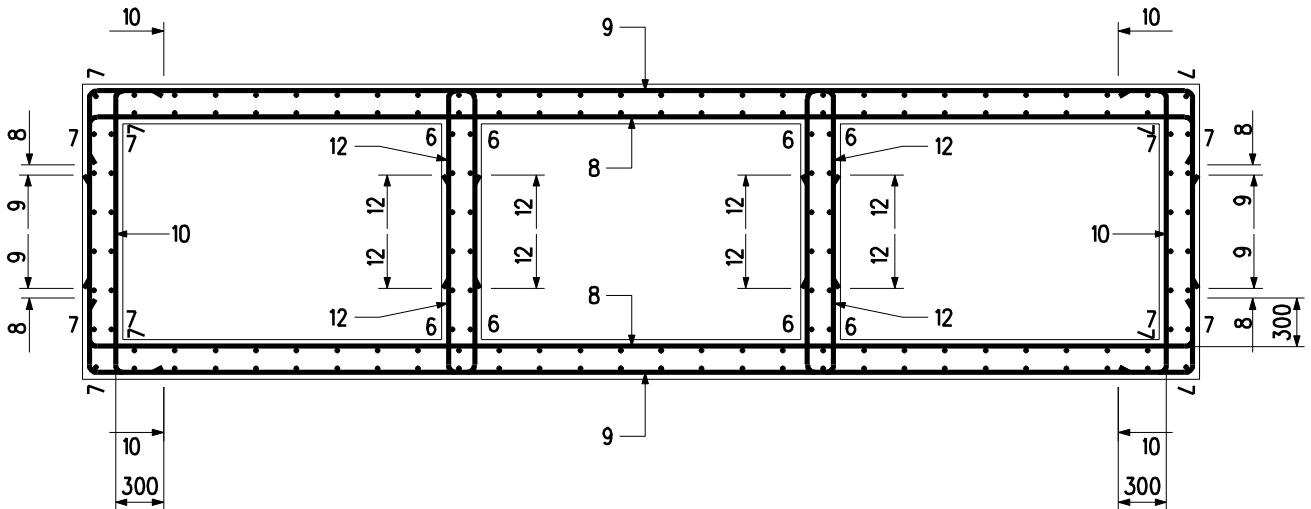
HIGHWAYS DEPARTMENT

| | | |
|-----------|-------------|-----|
| REFERENCE | DRAWING No. | CAD |
| SCALE | H 3141 | |
| 1 : 50 | | |

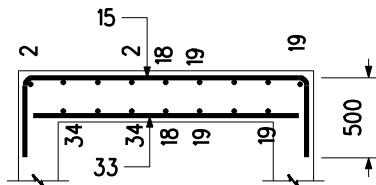


VIEW A

view B similar but opp. handed



SECTION H - H



SECTION K - K

wall bars not shown for clarity

Notes :

1. See H3134 for general notes.
2. See H3143 for Section F-F.

| | | | |
|------|--|-----------|---------|
| | Former drg. no. H3028/9A with general revision | | June 94 |
| REF. | REVISION | SIGNATURE | DATE |

**PETROL INTERCEPTOR
FOR OPEN PUBLIC
TRANSPORT INTERCHANGE
(SHEET 9 OF 11)**

HIGHWAYS DEPARTMENT

REFERENCE

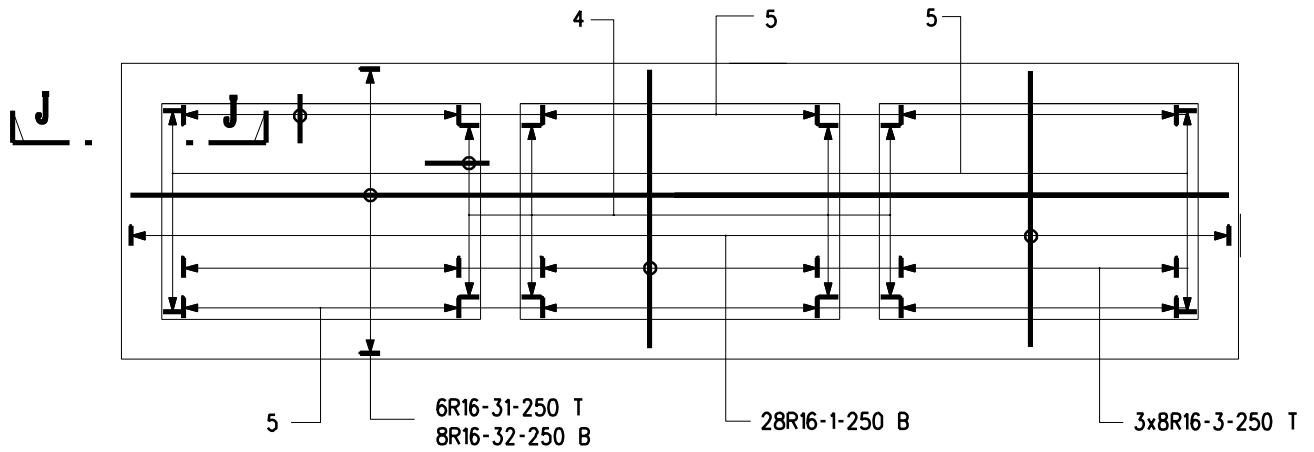
DRAWING No.

CAD

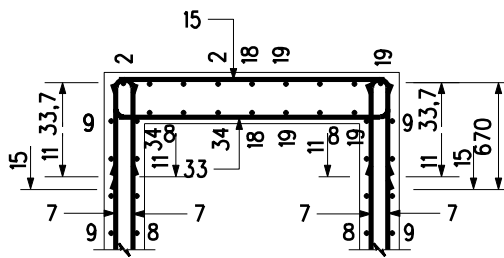
SCALE

1 : 50

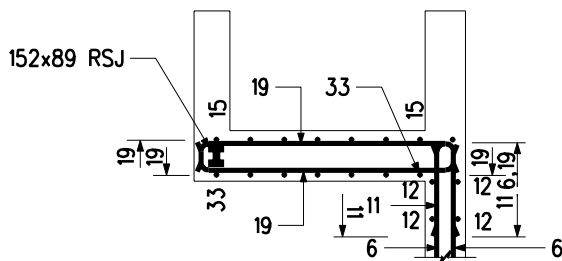
H 3142



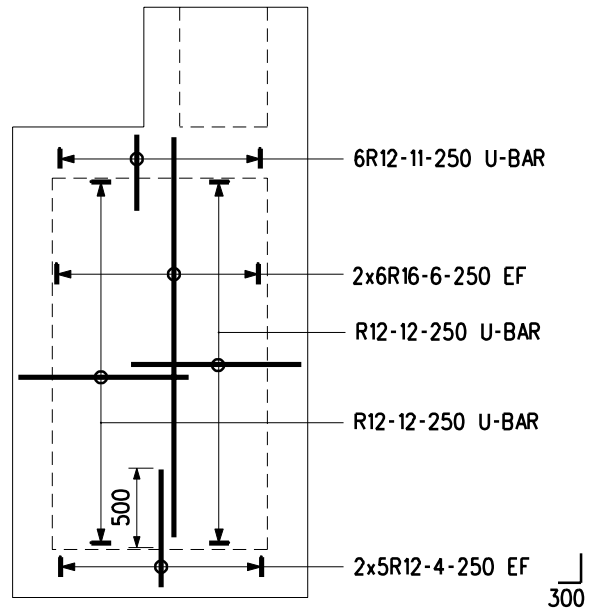
BASE SLAB



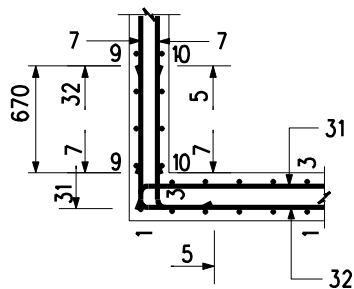
SECTION F - F



SECTION G - G



INTERNAL WALL



SECTION J - J

Notes :

See H3134 for general notes.

| | | | |
|------|---|-----------|---------|
| | Former drg. no. H3028/10A with general revision | | June 94 |
| REF. | REVISION | SIGNATURE | DATE |

PETROL INTERCEPTOR
FOR OPEN PUBLIC
TRANSPORT INTERCHANGE
(SHEET 10 OF 11)

HIGHWAYS DEPARTMENT

REFERENCE

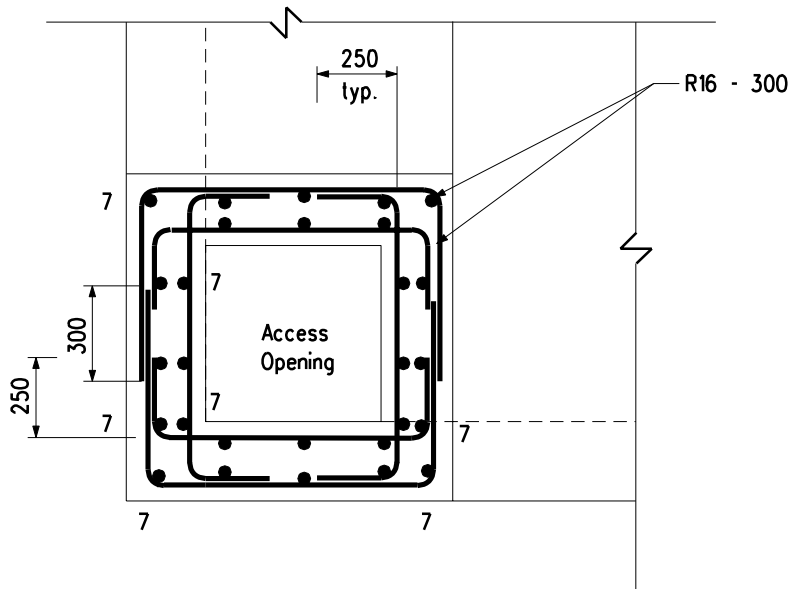
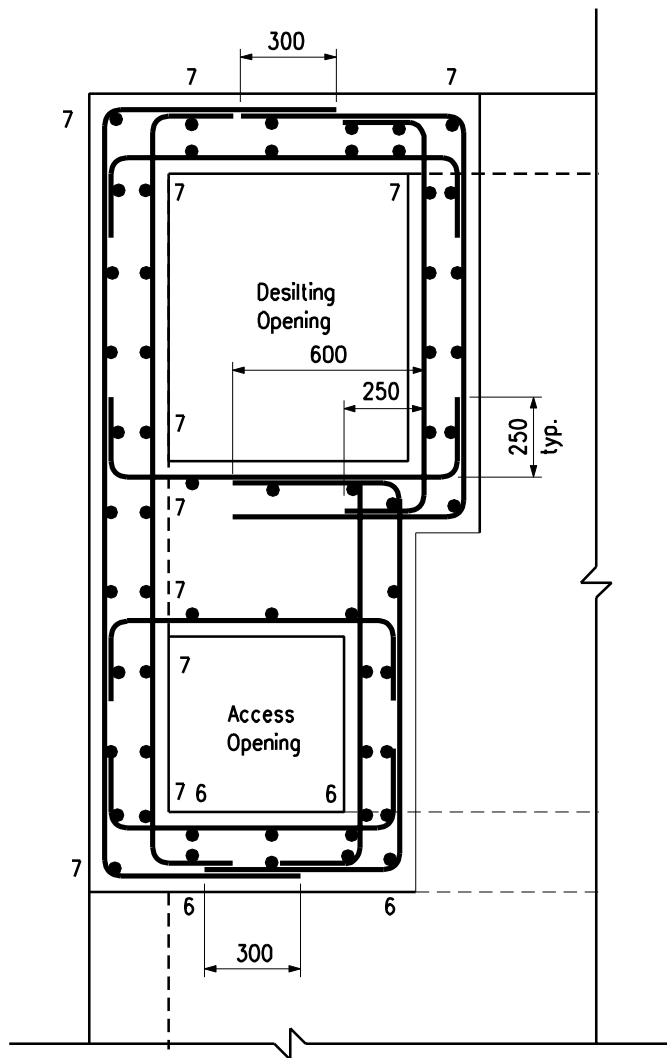
DRAWING No.

CAD

SCALE

1 : 50

H 3143



Notes :

1. See H3134 for general notes.
2. All horizontal and vertical bars are R16 at 300 c/c except otherwise specified.
3. Bars with mark 6 and 7 are bars from walls in chambers below shafts (see Sect. H-H drg. no. H3142)

SECTIONAL PLANS

reinforcement details for access shafts

| | | | |
|------|-----------|-----------|---------|
| | New issue | | June 94 |
| REF. | REVISION | SIGNATURE | DATE |

PETROL INTERCEPTOR
FOR OPEN PUBLIC
TRANSPORT INTERCHANGE
(SHEET 11 OF 11)

HIGHWAYS DEPARTMENT

REFERENCE

DRAWING No.

CAD

SCALE

1:25

H 3144