

Legend

- Proposed Landfill Extension Waste Boundary
- Study area (500m from project site boundary)

	Landscape Characters Area (LCAs)	Sensitivity	Qty. Loss / Total Qty within study area (Ha)	Magnitude of change		significance threshold without mitigation	
				During Construction and operation	During restoration and aftercare	During Construction and operation	During restoration and aftercare
LCA1	Disturbed land (Existing NENT Landfill Site)	Low	35.2 / 90.2	Negligible	Negligible	Negligible	Negligible
LCA2A	Rural Settlement Landscape (Tong To Shan Tsuen & Ngong Tong)	High	14.2 / 66.5	Large	Intermediate	Significant	Moderate to Significant
LCA2B	Rural Settlement Landscape (Ping Yuen)	Medium	0.00 / 15.9	Negligible	Negligible	Negligible	Negligible
LCA3A	Upland Landscape (NW facing slope of Robin's Nest)	Medium	0.78 / 32.4	Negligible	Negligible	Negligible	Negligible
LCA3B	Upland Landscape (SE facing slope of Wo Keng Shan)	High	0.1 / 54.1	Negligible	Negligible	Negligible	Negligible
LCA3C	Upland Landscape (NW facing slope of Wo Keng Shan)	Medium	13.1 / 40.1	intermediate	Small	Moderate	Slight to Moderate

- FIRST ISSUE		PM	02/06
Rev	Description	By	Date
Consultant			
ARUP		奧雅納工程顧問 Ove Arup & Partners Hong Kong Limited	
Project title			
Agreement No. CE 20/2004 (EP) North-East New Territories (NENT) Landfill Extension Feasibility Study			
Drawing title			
LANDSCAPE CHARACTER AREAS (LCAs) PLAN & IMPACT ASSESSMENT (WITHOUT MITIGATION)			
Drawing no.		Rev.	
24315/14/002		-	
Drawn	Date	Checked	Approved
RY	02/06	PM	YWY
Scale	Status		PRELIMINARY
1 : 10000 DN A3			
COPYRIGHT RESERVED			
環境保護署 廢物設施營運處 Environmental Protection Department Waste Facilities Business Unit			

Printed by : reman yick
 File name : J:\24315-CSWP\Arup\Drawing\CIVIL\24315_14002.dgn

Printed by : reman yick 8/5/2007
 Filename : J:\24315-CSWP\Arup\Drawing\CIVIL\24315_14003.dgn



Legend

- Existing NENT Landfill Site and associated stockpile and borrow area (SBA)
- Proposed Landfill Extension Waste Boundary

-	FIRST ISSUE	PM	02/06
Rev	Description	By	Date

Consultant
ARUP 奧雅納工程顧問
 Ove Arup & Partners Hong Kong Limited

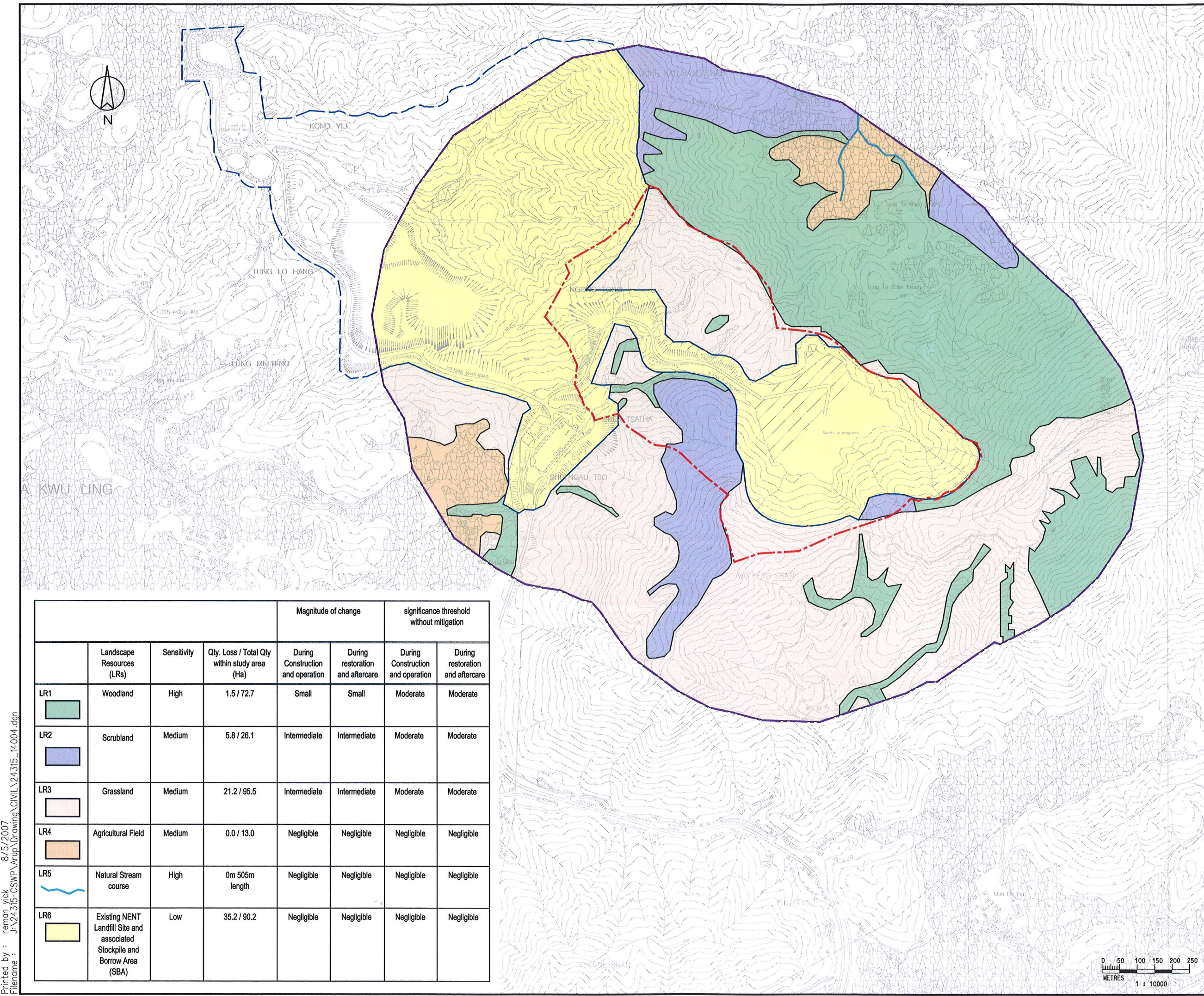
Project title
 Agreement No. CE 20/2004 (EP)
 North-East New Territories (NENT)
 Landfill Extension
 Feasibility Study

Drawing title
**AERIAL PHOTOGRAPH OF
 THE PROJECT SITE AND
 THE SURROUNDINGS**

Drawing no.		Rev.	
24315/14/003		-	
Drawn RY	Date 02/06	Checked PM	Approved YMY
Scale N.T.S.		Status PRELIMINARY	

COPYRIGHT RESERVED

環境保護署
廢物設施營運處
 Environmental Protection Department
 Waste Facilities Business Unit

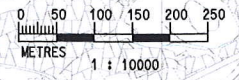


Legend

- Proposed Landfill Extension Waste Boundary
- Study area (500m from project site boundary)

	Landscape Resources (LRs)	Sensitivity	Qty. Loss / Total Qty within study area (Ha)	Magnitude of change		significance threshold without mitigation	
				During Construction and operation	During restoration and aftercare	During Construction and operation	During restoration and aftercare
LR1 	Woodland	High	1.5 / 72.7	Small	Small	Moderate	Moderate
LR2 	Scrubland	Medium	5.8 / 26.1	Intermediate	Intermediate	Moderate	Moderate
LR3 	Grassland	Medium	21.2 / 95.5	Intermediate	Intermediate	Moderate	Moderate
LR4 	Agricultural Field	Medium	0.0 / 13.0	Negligible	Negligible	Negligible	Negligible
LR5 	Natural Stream course	High	0m 505m length	Negligible	Negligible	Negligible	Negligible
LR6 	Existing NENT Landfill Site and associated Stockpile and Borrow Area (SBA)	Low	35.2 / 90.2	Negligible	Negligible	Negligible	Negligible

- FIRST ISSUE	PM 02/06
Rev Description	By Date
Consultant	
ARUP 奧雅納工程顧問 Ove Arup & Partners Hong Kong Limited	
Project title	
Agreement No. CE 20/2004 (EP) North-East New Territories (NENT) Landfill Extension Feasibility Study	
Drawing title	
LANDSCAPE RESOURCES (LRs) PLAN & IMPACT ASSESSMENT (WITHOUT MITIGATION)	
Drawing no. 24315/14/004	
Drawn RY	Date 02/06
Checked PM	Approved YW
Scale 1 : 10000 ON A3	Status PRELIMINARY
COPYRIGHT RESERVED	
環境保護署 廢物設施營運處 Environmental Protection Department Waste Facilities Business Unit	



Printed by : reman yick
 File name : J:\24315-CSWP\Arup\Drawing\CIVIL\24315_14004.dgn