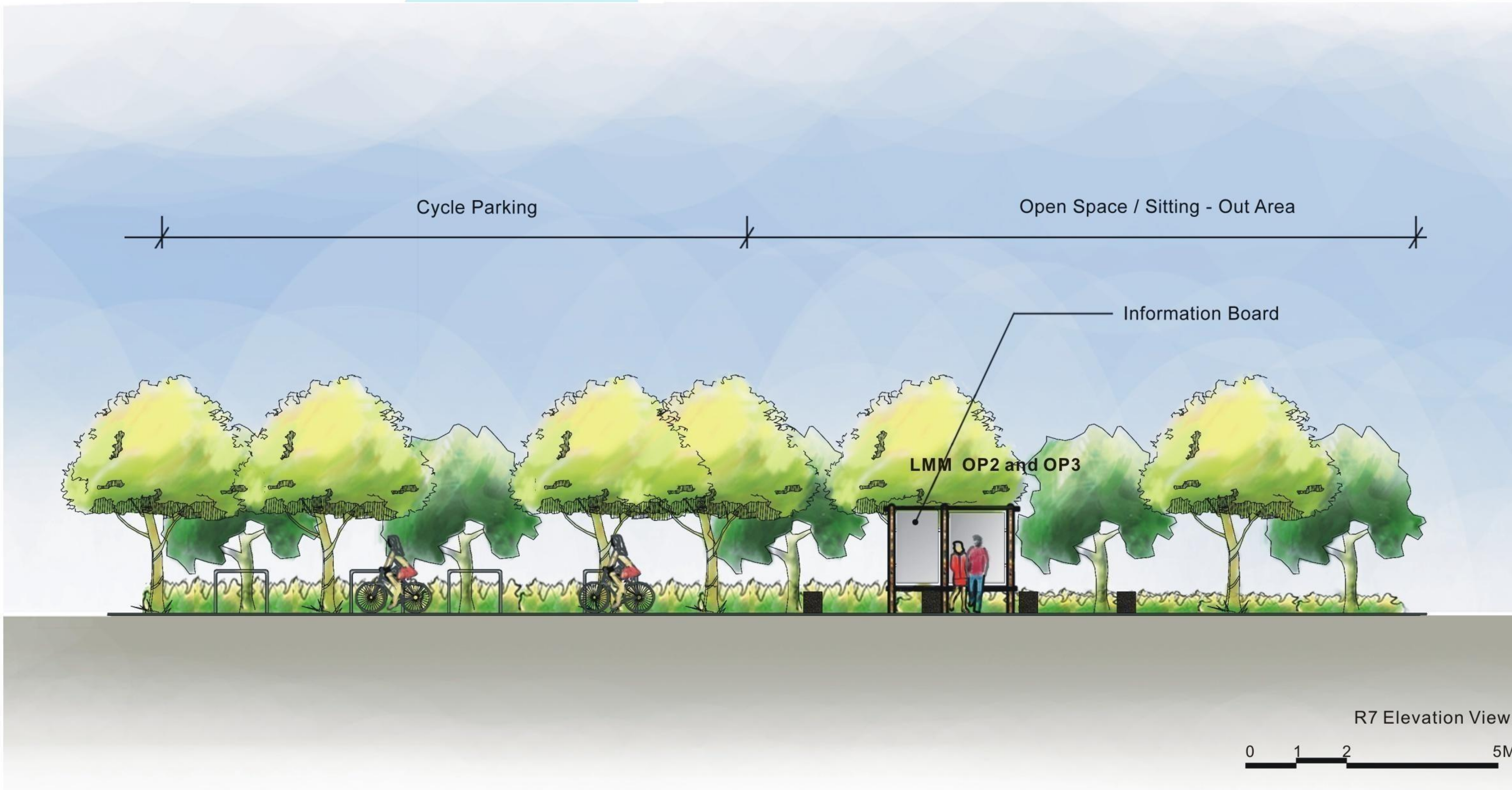
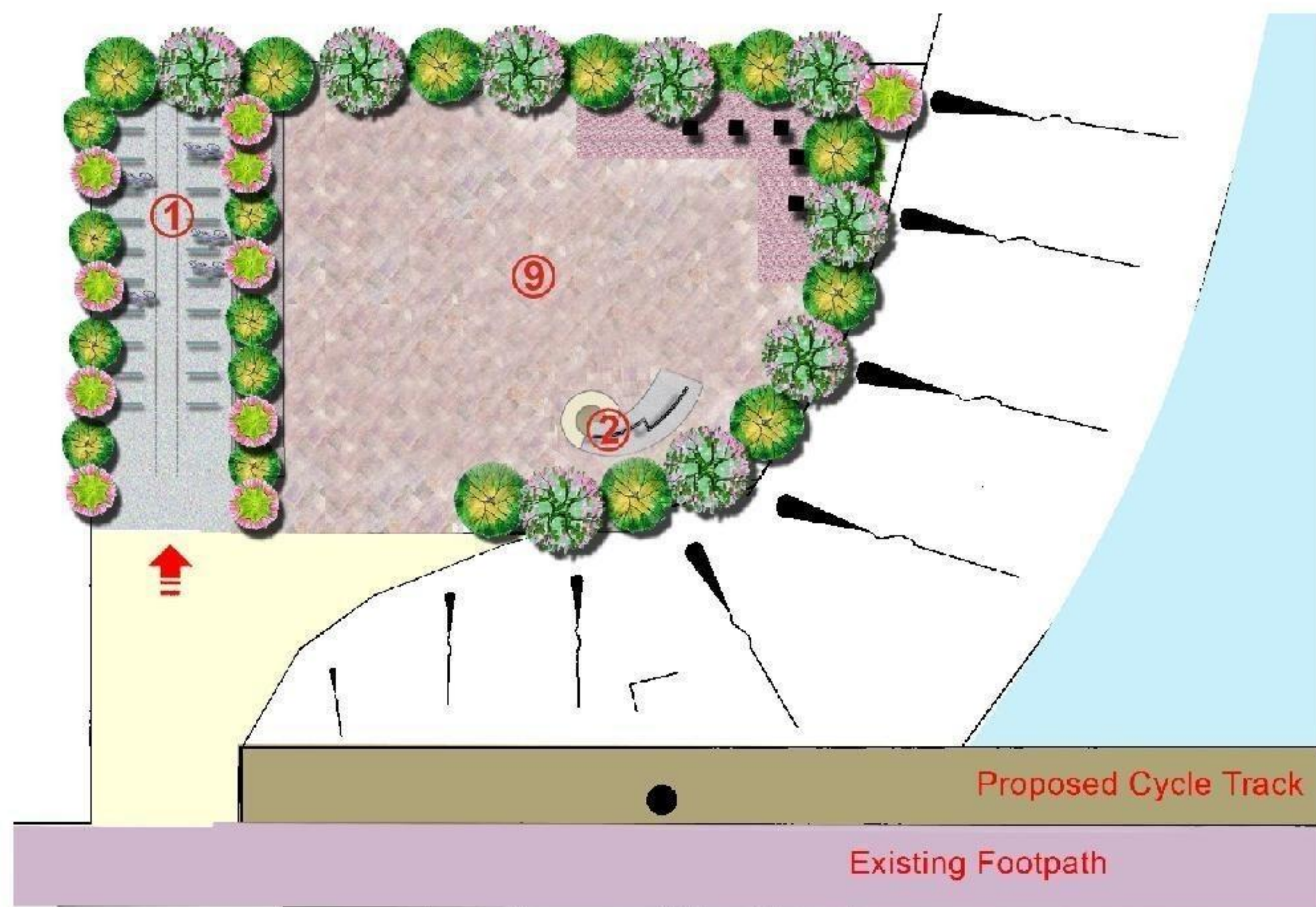


### R7 Resting Station Concept



Resting Station (R)		R7
Zoning		V and REC
Facility No.	Facility Description	
1	Cycle Parking Spaces	50 m <sup>2</sup> for 20 Parking Units
2	Information Board	10m <sup>2</sup>
3	Mobile First Aid Station	N/A
4	Shelter / Pavilion	N/A
5	Public Toilet	*
6	Cycle Rental / Return Kiosk	N/A
7	Food Kiosk	N/A
8	Practicing Area / Gathering Ground	N/A
9	Open Space / Sitting-out Area	160 m <sup>2</sup>
Total Area		220 m <sup>2</sup>

Note: Landscape Design Concept provided by consultant of the NWNT cycle track design and construction study under Agreement No. CE22/2006, CEDD, 2007