

Annex C11

Road Traffic Noise Impact Assessment (With Mitigation)

Annex C11-1

Predicted Road Traffic Noise Levels With and Without the Project for Year 2026

NSR	Floor	Assessment Level in mPD	Noise Criteria, dB(A)	Predicted Façade Noise Levels, L _{10,1 hour} , dB(A)						Noise Contribution due to the Project Without Mitigation ^(b) , dB(A)	Noise Contribution due to the Project With Mitigation ^(b) , dB(A)	
				Without the Project	With the Project (Without Mitigation)			With the Project (With Mitigation) ^(a)				
					New Roads	Existing Roads	Overall	New Roads	Existing Roads			Overall
WUT1	G/F	5.4	70	66.5	42.1	66.4	66.5	42.1	66.4	66.5	0.0	0.0
	1/F	8.2	70	69.1	45.3	69.0	69.0	45.3	69.0	69.0	-0.1	-0.1
	2/F	11	70	73.5	51.6	73.2	73.3	51.6	73.2	73.3	-0.2	-0.2
STNV1	G/F	5.4	70	67.0	43.6	66.9	66.9	43.6	66.9	66.9	-0.1	-0.1
	1/F	8.2	70	70.5	46.7	70.3	70.4	46.7	70.3	70.4	-0.1	-0.1
JCAAH1	G/F ^(c)	6.4	-	-	-	-	-	-	-	-	-	-
	1/F	9.4	55	72.4	51.1	73.1	73.2	51.1	73.0	73.0	0.8	0.6
	2/F	12.4	55	73.3	51.6	74.0	74.0	51.6	73.8	73.9	0.7	0.6
	3/F	15.4	55	74.2	52.3	74.8	74.9	52.3	74.7	74.8	0.7	0.6
	4/F	18.4	55	74.9	52.9	75.6	75.7	52.9	75.5	75.6	0.8	0.7
	5/F	21.4	55	75.5	53.4	76.2	76.2	53.4	76.1	76.1	0.7	0.6
JCAAH2	G/F ^(c)	6.4	-	-	-	-	-	-	-	-	-	-
	1/F	9.4	55	76.9	50.2	77.4	77.3	50.2	77.4	77.3	0.4	0.4
	2/F	12.4	55	77.7	50.9	78.2	78.2	50.9	78.2	78.2	0.5	0.5
	3/F	15.4	55	78.3	51.4	78.9	78.9	51.4	78.9	78.9	0.6	0.6
	4/F	18.4	55	78.8	52.0	79.4	79.3	52.0	79.4	79.3	0.5	0.5
	5/F	21.4	55	79.0	52.5	79.6	79.5	52.5	79.6	79.5	0.5	0.5
V1	G/F	6.1	70	68.6	53.5	68.3	68.4	53.5	68.3	68.4	-0.2	-0.2
	1/F	8.6	70	69.7	54.9	69.4	69.5	54.9	69.4	69.5	-0.2	-0.2
V2	G/F	5.7	70	69.9	48.9	69.2	69.3	48.9	69.2	69.3	-0.6	-0.6
	1/F	8.2	70	71.2	49.7	70.4	70.5	49.7	70.4	70.4	-0.7	-0.8
V3	G/F	8.1	70	68.1	51.1	68.0	68.1	51.1	68.0	68.1	0.0	0.0
	1/F	10.6	70	71.0	54.4	70.9	71.0	54.4	70.9	71.0	0.0	0.0
V4	G/F	8.9	70	69.4	55.5	69.2	69.4	55.5	69.2	69.4	0.0	0.0
	1/F	11.4	70	70.5	56.4	70.3	70.5	56.4	70.3	70.5	0.0	0.0
V5	G/F	9.3	70	69.0	55.9	68.9	69.1	55.9	68.9	69.1	0.1	0.1
	1/F	11.8	70	70.0	56.8	70.0	70.1	56.8	69.9	70.1	0.1	0.1
	2/F	14.3	70	71.0	57.7	70.9	71.1	57.7	70.9	71.1	0.1	0.1
	3/F	16.8	70	71.9	58.3	71.8	71.9	58.3	71.8	71.9	0.0	0.0
V6	G/F	6.8	70	67.3	55.6	66.8	67.1	53.6	66.7	66.8	-0.2	-0.5
	1/F	9.3	70	67.8	56.0	67.4	67.7	54.0	67.1	67.4	-0.1	-0.4
	2/F	11.8	70	68.3	56.5	67.9	68.2	54.4	67.7	67.9	-0.1	-0.4
YT1	G/F	11.5	70	66.5	57.6	65.9	66.5	54.6	65.2	65.5	0.0	-0.9
	5/F	26.5	70	69.1	59.9	68.5	69.0	57.3	68.0	68.4	-0.1	-0.7
	10/F	41.5	70	71.7	61.4	71.3	71.7	60.1	71.0	71.3	-0.1	-0.4
	15/F	56.5	70	73.2	62.5	72.9	73.3	62.0	72.7	73.0	0.0	-0.2
	20/F	71.5	70	74.2	63.1	73.9	74.3	63.0	73.8	74.2	0.0	0.0
	25/F	86.5	70	74.7	63.5	74.5	74.8	63.5	74.4	74.7	0.1	0.0
	30/F	101.5	70	75.0	63.7	74.8	75.0	63.7	74.7	75.0	0.0	0.0
	35/F	116.5	70	75.1	63.7	74.9	75.3	63.7	74.9	75.3	0.1	0.1
YT2	G/F	11.5	70	66.7	58.4	66.0	66.7	55.1	65.3	65.6	0.0	-1.1
	5/F	26.5	70	69.0	60.9	68.3	69.0	58.0	67.6	68.1	0.0	-0.9
	10/F	41.5	70	71.2	62.1	70.7	71.3	60.7	70.3	70.7	0.1	-0.5
	15/F	56.5	70	72.9	63.0	72.5	72.9	62.5	72.3	72.7	0.0	-0.2
	20/F	71.5	70	74.0	63.5	73.6	74.0	63.3	73.4	73.9	0.0	-0.1
	25/F	86.5	70	74.5	63.7	74.2	74.5	63.7	74.1	74.5	0.0	0.0
	30/F	101.5	70	74.8	63.8	74.5	74.8	63.8	74.4	74.8	0.0	0.0
	35/F	116.5	70	74.9	63.8	74.6	75.0	63.8	74.6	75.0	0.0	0.0
YT3	G/F	11.5	70	67.4	58.7	66.7	67.3	55.8	66.2	66.6	-0.1	-0.8
	5/F	26.5	70	69.7	61.3	69.1	69.7	58.7	68.6	69.0	0.0	-0.7
	10/F	41.5	70	71.7	62.4	71.2	71.8	61.1	70.9	71.3	0.1	-0.4
	15/F	56.5	70	73.2	63.1	72.8	73.3	62.7	72.6	73.0	0.1	-0.2
	20/F	71.5	70	74.2	63.5	73.8	74.2	63.4	73.7	74.1	0.0	-0.1
	25/F	86.5	70	74.7	63.6	74.4	74.8	63.6	74.3	74.7	0.0	-0.1
	30/F	101.5	70	75.0	63.7	74.6	75.0	63.7	74.6	75.0	0.0	0.0
	35/F	116.5	70	75.1	63.6	74.7	75.1	63.6	74.7	75.1	0.0	0.0
KMYLS1	G/F	6.8	65	69.4	56.4	67.6	67.9	56.4	67.6	67.9	-1.5	-1.5
	1/F	9.8	65	72.0	57.7	69.9	70.1	57.7	69.9	70.1	-1.8	-1.8
	2/F	12.8	65	73.7	58.9	71.5	71.7	58.9	71.5	71.7	-1.9	-1.9
	3/F	15.8	65	74.4	60.1	72.2	72.4	60.1	72.2	72.4	-1.9	-1.9
	4/F	18.8	65	74.6	62.1	72.7	73.1	62.1	72.7	73.1	-1.5	-1.5
KMYLS2	G/F	6.8	65	67.5	58.0	66.5	67.0	55.3	64.0	64.5	-0.5	-3.0
	1/F	9.8	65	69.3	59.9	68.1	68.7	56.8	65.0	65.6	-0.6	-3.7
	2/F	12.8	65	71.0	62.0	69.7	70.4	58.5	66.1	66.8	-0.6	-4.2
	3/F	15.8	65	71.8	63.1	70.6	71.3	60.5	67.3	68.1	-0.5	-3.7
	4/F	18.8	65	72.4	64.1	71.2	72.0	62.7	68.6	69.6	-0.4	-2.8

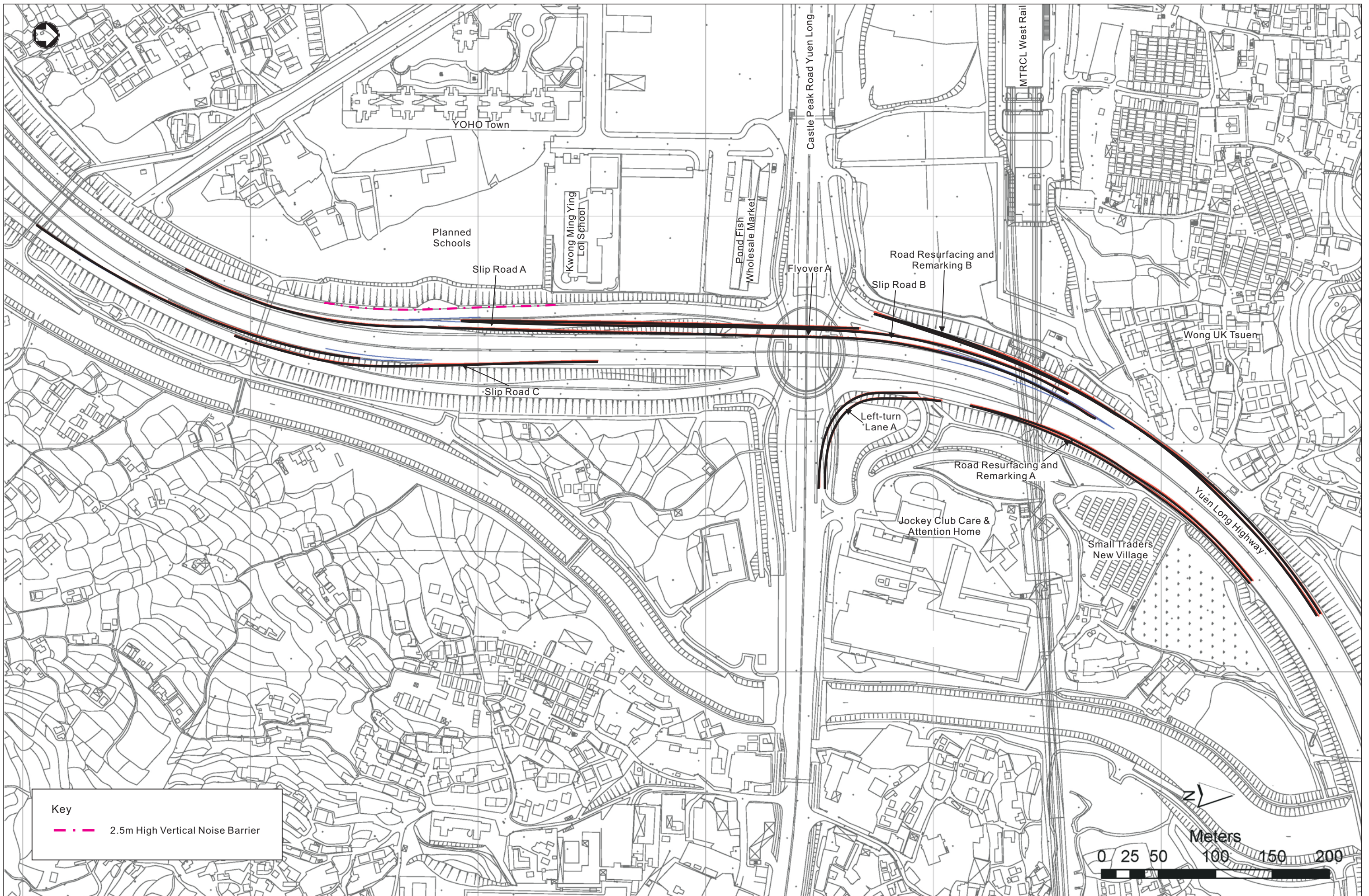
Annex C11-1

Predicted Road Traffic Noise Levels With and Without the Project for Year 2026

NSR	Floor	Assessment Level in mPD	Noise Criteria, dB(A)	Predicted Façade Noise Levels, L _{10,1 hour} , dB(A)						Noise Contribution due to the Project Without Mitigation ^(b) , dB(A)	Noise Contribution due to the Project With Mitigation ^(b) , dB(A)	
				Without the Project	With the Project (Without Mitigation)			With the Project (With Mitigation) ^(a)				
					New Roads	Existing Roads	Overall	New Roads	Existing Roads			Overall
ND1	1/F	41.6	70	76.1	59.8	76.1	76.1	59.5	76.0	76.1	0.0	0.0
	6/F	56.6	70	76.4	61.9	76.3	76.5	61.8	76.3	76.4	0.1	0.0
	11/F	71.6	70	76.6	62.8	76.6	76.7	62.8	76.5	76.7	0.1	0.1
	16/F	86.6	70	76.6	63.2	76.6	76.8	63.2	76.6	76.8	0.2	0.2
	21/F	101.6	70	76.7	63.4	76.6	76.8	63.4	76.6	76.8	0.1	0.1
	26/F	116.6	70	76.6	63.3	76.5	76.7	63.3	76.5	76.7	0.2	0.2
	31/F	131.6	70	76.5	63.3	76.4	76.6	63.3	76.4	76.6	0.1	0.1
	36/F	146.6	70	76.3	63.2	76.2	76.4	63.2	76.2	76.4	0.1	0.1
	41/F	161.6	70	76.2	63.0	76.0	76.3	63.0	76.0	76.3	0.1	0.1
	46/F	176.6	70	76.0	62.8	75.9	76.1	62.8	75.9	76.1	0.1	0.1
ND2	1/F	37.6	70	82.5	70.3	82.1	82.4	70.3	82.1	82.4	0.0	0.0
	6/F	52.6	70	82.2	69.6	82.1	82.3	69.6	82.1	82.3	0.0	0.0
	11/F	67.6	70	81.7	68.7	81.5	81.7	68.7	81.5	81.7	0.0	0.0
	16/F	82.6	70	81.1	67.8	80.9	81.2	67.8	80.9	81.2	0.0	0.0
	21/F	97.6	70	80.5	67.1	80.4	80.6	67.1	80.4	80.6	0.0	0.1
	26/F	112.6	70	80.0	66.5	79.9	80.0	66.5	79.9	80.1	0.0	0.1
	31/F	127.6	70	79.6	65.9	79.4	79.6	65.9	79.4	79.6	0.0	0.0
	36/F	142.6	70	79.2	65.4	79.0	79.2	65.4	79.0	79.2	0.0	0.0
	41/F	157.6	70	78.8	65.0	78.6	78.8	65.0	78.6	78.8	0.0	0.0
	46/F	172.6	70	78.4	64.6	78.2	78.4	64.6	78.3	78.4	0.0	0.0
ND3	1/F	37.6	70	82.2	68.8	82.1	82.3	68.8	82.1	82.3	0.1	0.1
	6/F	52.6	70	82.2	68.6	82.1	82.3	68.6	82.1	82.3	0.1	0.1
	11/F	67.6	70	81.6	67.9	81.6	81.8	67.9	81.6	81.8	0.2	0.2
	16/F	82.6	70	81.1	67.3	81.0	81.2	67.3	81.0	81.2	0.1	0.1
	21/F	97.6	70	80.5	66.7	80.5	80.6	66.7	80.5	80.7	0.1	0.2
	26/F	112.6	70	80.1	66.1	80.0	80.2	66.1	80.0	80.2	0.1	0.1
	31/F	127.6	70	79.6	65.6	79.6	79.7	65.6	79.6	79.7	0.1	0.1
	36/F	142.6	70	79.2	65.1	79.2	79.3	65.1	79.2	79.3	0.1	0.1
	41/F	157.6	70	78.8	64.6	78.8	78.9	64.6	78.8	78.9	0.1	0.1
	46/F	172.6	70	78.4	64.2	78.4	78.6	64.2	78.4	78.6	0.2	0.2
PS1	G/F	6.7	65	68.7	61.2	67.4	68.4	57.9	65.5	66.3	-0.3	-2.4
	1/F	9.7	65	69.7	62.5	68.4	69.4	58.9	66.5	67.2	-0.3	-2.5
	2/F	12.7	65	70.9	64.2	69.6	70.7	60.1	67.4	68.2	-0.2	-2.7
	3/F	15.7	65	71.8	65.3	70.5	71.6	61.3	68.3	69.1	-0.2	-2.7
	4/F	18.7	65	72.5	66.1	71.2	72.4	62.7	69.3	70.1	-0.1	-2.4
	5/F	21.7	65	73.2	66.7	72.0	73.1	64.2	70.4	71.3	-0.1	-1.9
	6/F	24.7	65	73.7	66.9	72.7	73.7	65.2	71.2	72.2	0.0	-1.5
Pun Uk	G/F	6.5	70	60.1	41.4	59.6	59.7	41.4	59.6	59.7	-0.4	-0.4
	1/F	9.5	70	61.6	41.8	60.9	61.1	41.8	60.9	61.1	-0.5	-0.5
	2/F	12.5	70	63.3	42.3	62.5	62.5	42.3	62.5	62.5	-0.7	-0.7
	3/F	15.5	70	64.8	42.7	64.3	64.4	42.7	64.3	64.4	-0.4	-0.4
	4/F	18.5	70	66.1	43.1	65.8	65.8	43.1	65.8	65.8	-0.4	-0.4
	5/F	21.5	70	66.9	43.5	66.7	66.7	43.5	66.7	66.7	-0.2	-0.2
	6/F	24.5	70	67.5	43.9	67.4	67.5	43.9	67.4	67.5	0.0	0.0
	7/F	27.5	70	67.9	44.5	68.0	67.9	44.5	68.0	67.9	0.0	0.0
	8/F	30.5	70	68.2	45.1	68.3	68.3	45.1	68.3	68.3	0.2	0.2
	9/F	33.5	70	68.4	45.5	68.6	68.7	45.5	68.6	68.7	0.2	0.2
	10/F	36.5	70	68.7	45.8	68.9	68.9	45.8	68.9	68.9	0.2	0.2
	11/F	39.5	70	68.9	46.1	69.1	69.2	46.1	69.1	69.2	0.3	0.3
	12/F	42.5	70	69.1	46.6	69.4	69.4	46.6	69.4	69.4	0.3	0.3
	13/F	45.5	70	69.4	47.1	69.5	69.6	47.1	69.5	69.6	0.2	0.2
	14/F	48.5	70	69.6	47.5	69.8	69.8	47.5	69.8	69.8	0.2	0.2
	15/F	51.5	70	69.8	47.8	69.9	70.0	47.8	69.9	70.0	0.2	0.2
16/F	54.5	70	70.0	48.2	70.1	70.1	48.2	70.1	70.1	0.1	0.1	
ExSTNVPSI	G/F	5.4	65	64.1	44.0	63.8	63.9	44.0	63.8	63.9	-0.2	-0.2

Notes:

- 72.8 Predicted noise level exceeded the corresponding criteria.
- (a) Proposed Noise Mitigation Measures: 1m high vertical noise barrier for Planned Schools & 2m setback of noise barrier for bus sight-line
- (b) Noise Contribution due to the Project is calculated by subtracting the noise level without the Project from the overall noise level with the Project.
- (c) Ground floor level of JCAH1 is plant room and lobby. Therefore, it is not considered as noise sensitive.



Key
 - - - 2.5m High Vertical Noise Barrier



Agreement No.: WD 6/2007
 Project Title: Improvement to Pok Oi Interchange - Environmental Impact Assessment Study

Figure Title: Environmental Impact Assessment Report
 PROPOSED NOISE MITIGATION MEASURES

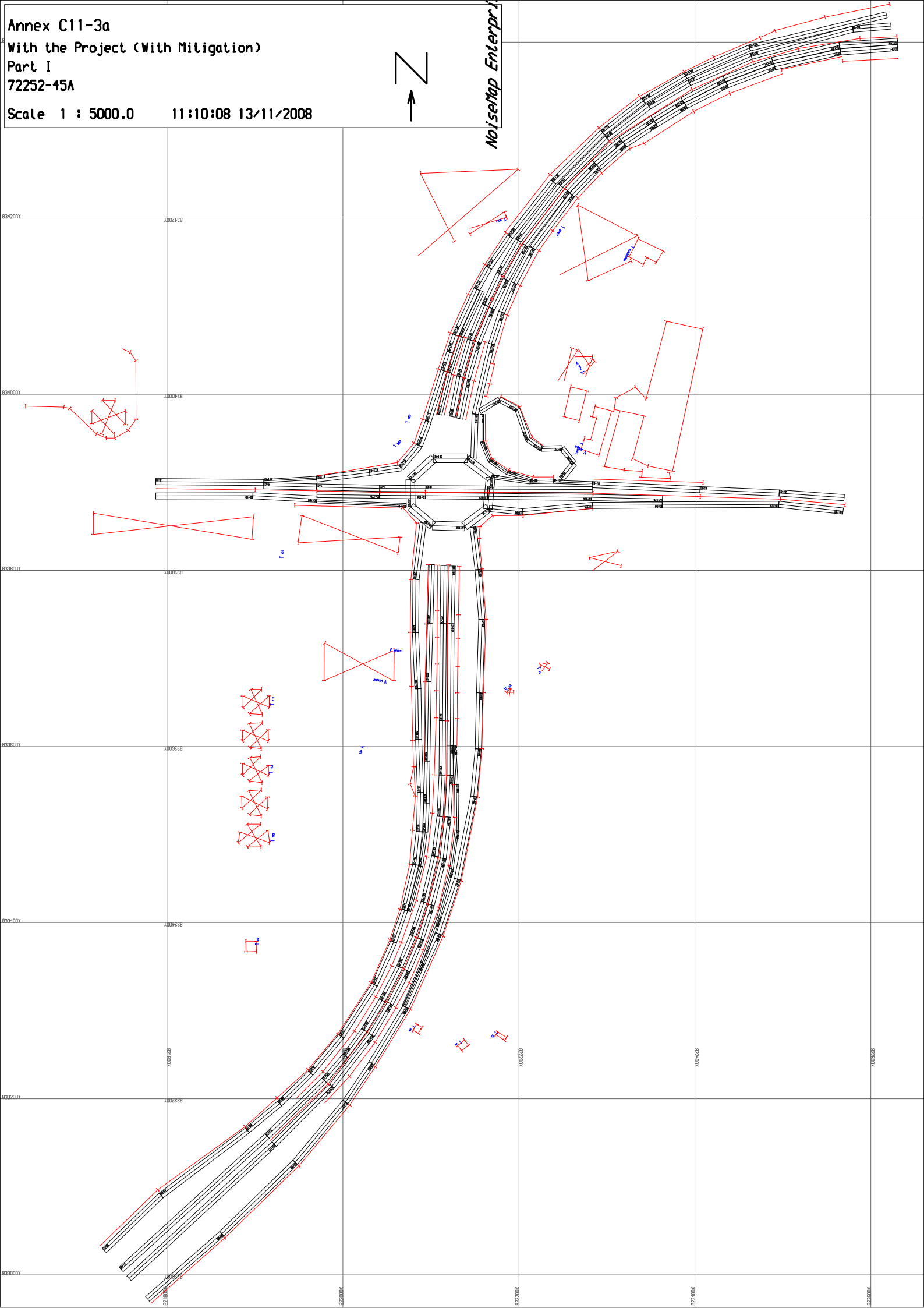
Checked PS		Scale -		Rev. 0	
Designed TF		Drawn -		Date 02/07/2008	

Annex C11-3a
With the Project (With Mitigation)
Part I
72252-45A

Scale 1 : 5000.0 11:10:08 13/11/2008



NoiseMap Enterprise

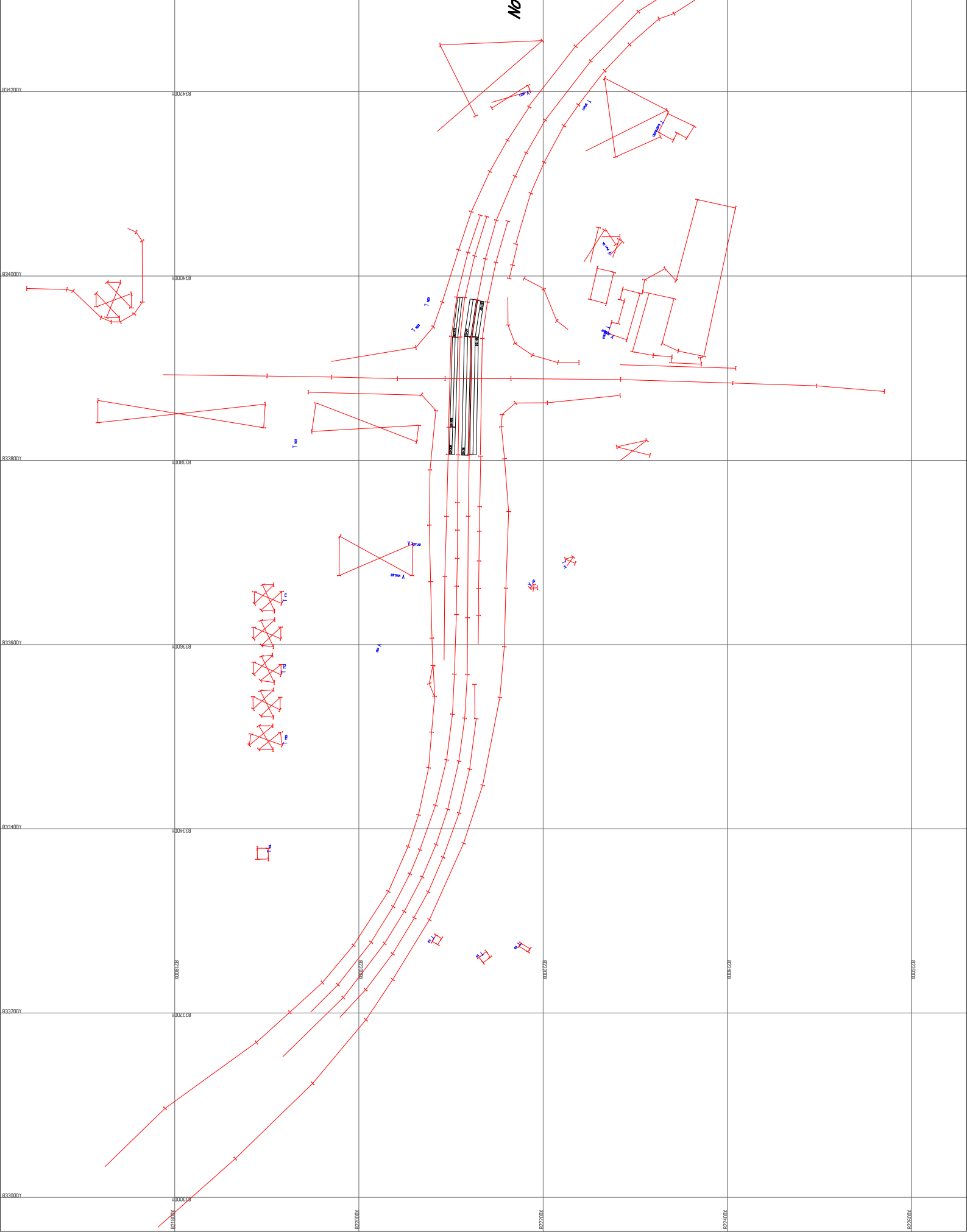


Annex C11-3b
With the Project (With Mitigation)
Part II
72252-45B

Scale 1 : 5000.0 11:11:22 13/11/2008



NoiseMap Enterprise



Annex C11-4

Sample Model Input Files for Road Traffic Noise Assessment

With the Project (With Mitigation)

TEXT	FLO= -1122.0PHV=	44.0SPD=	50.0FNO=	8.0
TEXT	TEXT			
TEXT	New Flyover NB (50kph)			
Option to set calc method as L10	FLO= -630.0PHV=	40.0SPD=	50.0FNO=	9.0
OPT=2.0	TEXT			
COA= 1.0COD= 1000.0COR= 10.0	New Slip Rd C			
READ	FLO= -478.0PHV=	21.0SPD=	50.0FNO=	10.0
72252-1.FLO	TEXT			
READ	Slip Rd NB @ N of POI			
72252-1.SEG	FLO= -1241.0PHV=	52.0SPD=	50.0FNO=	11.0
READ	TEXT			
72252-1.BAR	Slip Rd SB @ N of new left-turn lane			
LINK	FLO= -948.0PHV=	47.0SPD=	50.0FNO=	12.0
All	TEXT			
1,2,3,4,5,	Slip Rd EB @ E of POI			
LINK	FLO= -711.0PHV=	50.0SPD=	50.0FNO=	13.0
YLH - N	TEXT			
1,	Slip Rd WB @ E of POI			
LINK	FLO= -556.0PHV=	56.0SPD=	50.0FNO=	14.0
YLH - S	TEXT			
2,	Svc Rd from POH			
LINK	FLO= -55.0PHV=	100.0SPD=	50.0FNO=	15.0
CPR - W	TEXT			
3,	Slip Rd EB @ W of POI			
LINK	FLO= -1428.0PHV=	52.0SPD=	50.0FNO=	16.0
CPR - E	TEXT			
4,	YLH NB @ N of POI (Combined)			
LINK	FLO= -4784.0PHV=	54.0SPD=	80.0FNO=	17.0
New Roads	TEXT			
5,	YLH NB @ N of POI (to Route 3)			
READ	FLO= -1435.0PHV=	54.0SPD=	80.0FNO=	18.0
72252-1.REC	TEXT			
END	YLH NB @ N of POI (to Sheung Shui)			
TEXT	FLO= -3349.0PHV=	54.0SPD=	80.0FNO=	19.0
TRAFFIC FORECAST AT YEAR 2026 AM (WITH PROJECT)	TEXT			
TIM= 18.0	New Left-turn Lane A			
TEXT	FLO= -64.0PHV=	45.0SPD=	50.0FNO=	21.0
CP Rd EB @ E of POI	TEXT			
FLO= -2057.0PHV=	YLH SB @ S of New Slip Rd C			
49.0SPD=	FLO= -1967.0PHV=	73.0SPD=	80.0FNO=	22.0
50.0BAS=	TEXT			
2.0FNO=	Slip Rd NB @ S New Slip Rd A			
1.0	FLO= -1234.0PHV=	43.0SPD=	50.0FNO=	23.0
TEXT	TEXT			
CP Rd EB under POI	Slip Rd SB @ S New Slip Rd C			
FLO= -1282.0PHV=	FLO= -997.0PHV=	35.0SPD=	50.0FNO=	24.0
48.0SPD=	TEXT			
50.0FNO=	Slip Rd SB @ N of POI			
2.0	FLO= -884.0PHV=	47.0SPD=	50.0FNO=	25.0
TEXT	TEXT			
CP Rd WB @ E of POI	Slip Rd EB @ E of New Left-turn Lane A			
FLO= -2301.0PHV=	FLO= -775.0PHV=	49.0SPD=	50.0FNO=	26.0
45.0SPD=	TEXT			
50.0FNO=	New Flyover NB (70kph)			
3.0	FLO= -630.0PHV=	40.0SPD=	70.0FNO=	27.0
TEXT	TEXT			
YLH NB	Slip Rd NB @ N of POI (80kph)			
FLO= -2913.0PHV=	FLO= -1241.0PHV=	52.0SPD=	80.0FNO=	28.0
57.0SPD=				
80.0FNO=				
4.0				
TEXT				
Slip Rd NB @ S of POI				
FLO= -604.0PHV=				
48.0SPD=				
50.0FNO=				
5.0				
TEXT				
Slip Rd SB @ S of POI				
FLO= -519.0PHV=				
47.0SPD=				
50.0FNO=				
6.0				
TEXT				
Roundabout				
FLO= -1736.0PHV=				
51.0SPD=				
50.0FNO=				
7.0				
TEXT				
Slip Rd WB @ W of POI				

TEXT					TEXT				
New Flyover NB (80kph)					CAT=	1.0RSX=822124.1RSY=833974.6HCS=	15.2		
FLO=	-630.0PHV=	40.0SPD=	80.0FNO=	29.0	SEG=	28.0			
TEXT					REX=822133.0REY=834020.1HCE=	12.9SEND	.0		
Slip Rd SB @ N of new left-turn lane (80kph)					REX=822144.7REY=834061.4HCE=	11.5SEND	.0		
FLO=	-948.0PHV=	47.0SPD=	80.0FNO=	30.0	REX=822161.3REY=834101.4HCE=	11.0SEND	.0		
TEXT					REX=822178.0REY=834137.1HCE=	9.4SEND	.0		
CP Rd WB under POI					REX=822199.3REY=834174.7HCE=	7.7SEND	.0		
FLO=	-1745.0PHV=	41.0SPD=	50.0FNO=	31.0	TEXT				
YLH SB					YLH - NB (to Sheung Shui)				
FLO=	-2445.0PHV=	63.0SPD=	80.0FNO=	32.0	UFN=	19.0			
TEXT					REX=822247.4REY=834237.1HCE=	7.0SEND	.0		
CP Rd EB @ W of POI					TEXT				
FLO=	-2710.0PHV=	50.0SPD=	50.0FNO=	33.0	REX=822300.1REY=834290.8HCE=	6.9SEND	.0		
TEXT					REX=822347.8REY=834327.2HCE=	6.8SEND	.0		
CP Rd WB @ W of POI					REX=822393.5REY=834353.8HCE=	6.8SEND	.0		
FLO=	-2867.0PHV=	42.0SPD=	50.0FNO=	34.0	REX=822464.1REY=834383.9HCE=	6.8SEND	.0		
TEXT					REX=822579.6REY=834414.6HCE=	7.5SEND	.0		
RETN	0.0				REX=822622.8REY=834418.1HCE=	7.5SEND	.0		
TEXT					TEXT				
CASTLE PEAK RD - YL					UFN=	30.0RSX=822630.4RSY=834393.8HCS=	6.1		
TEXT					SEG=	54.0			
CP RD EB					REX=822565.7REY=834388.9HCE=	5.6SEND	.0		
UFN=	33.0CAT=	3.0RSX=821787.2RSY=833900.8HCS=	4.1		REX=822490.7REY=834371.9HCE=	6.2SEND	.0		
4.7HCG=	0.0				REX=822436.6REY=834351.5HCE=	6.2SEND	.0		
SEG=	2.0NCY=	1.0WCY=	3.5DCY=	0.0HCY=	REX=822389.9REY=834327.8HCE=	6.2SEND	.0		
0.0					REX=822355.8REY=834306.9HCE=	6.2SEND	.0		
RST=	1.0RTD=	1.2GND=	0.0NBA=	-1.0RCT=	REX=822320.3REY=834283.7HCE=	6.2SEND	.0		
0.0					REX=822290.6REY=834257.7HCE=	6.3SEND	.0		
REX=821909.9REY=833899.8HCE=					REX=822260.4REY=834226.4HCE=	6.3SEND	.0		
4.1SEND					REX=822215.5REY=834166.3HCE=	7.0SEND	.0		
TEXT					TEXT				
UFN=	2.0RSX=821909.9RSY=833896.2HCS=	4.1			UFN=	23.0CAT=	2.0RSX=821728.6RSY=833027.6HCS=		
SEG=	5.0				17.4				
RCT=	1.0				SEG=	66.0			
ABS=	0.0BCL=	4.0TCL=	4.0AGL=	0.0DEL=	RST=	0.0RTD=	1.2		
0.6					REX=821793.3REY=833090.3HCE=	17.0SEND	.0		
BCR=	4.0TCR=	4.0AGR=	0.0DER=	0.8	REX=821891.4REY=833164.2HCE=	15.2SEND	.0		
REX=821969.8REY=833894.6HCE=					REX=821928.0REY=833194.5HCE=	14.9SEND	.0		
4.2SEND					REX=821963.4REY=833229.1HCE=	14.5SEND	.0		
REX=822041.6REY=833893.2HCE=					REX=821998.0REY=833270.8HCE=	14.2SEND	.0		
2.9SEND					REX=822036.0REY=833329.4HCE=	13.8SEND	.0		
DEL=	4.3				REX=822057.6REY=833378.1HCE=	13.4SEND	.0		
REX=822094.2REY=833892.8HCE=					REX=822070.1REY=833414.2HCE=	13.0SEND	.0		
1.3SEND					UFN=	5.0			
CAT=	4.0				REX=822082.6REY=833465.7HCE=	12.4SEND	.0		
DEL=	7.0				REX=822086.6REY=833503.1HCE=	12.0SEND	.0		
REX=822164.4REY=833892.3HCE=					TEXT				
1.6SEND					RSX=822087.1RSY=833503.4HCS=	12.0			
DEL=	3.0				REX=822088.1REY=833547.6HCE=	11.6SEND	.0		
REX=822283.4REY=833891.8HCE=					TEXT				
5.3SEND					REX=822086.0REY=833607.9HCE=	10.9SEND	.0		
TEXT					TEXT				
UFN=	1.0RSX=822283.4RSY=833897.4HCS=	5.3			RSX=822082.3RSY=833729.4HCS=	9.5			
RCT=	0.0				SEG=	79.0			
REX=822405.8REY=833891.7HCE=					REX=822083.0REY=833789.9HCE=	9.0SEND	.0		
7.0SEND					REX=822091.0REY=833853.9HCE=	8.4SEND	.0		
REX=822495.9REY=833887.9HCE=					TEXT				
8.8SEND					UFN=	6.0RSX=822147.8RSY=833849.2HCS=	8.5		
REX=822569.6REY=833882.7HCE=					REX=822153.6REY=833801.1HCE=	8.6SEND	.0		
9.6SEND					REX=822157.9REY=833744.3HCE=	9.5SEND	.0		
TEXT					REX=822155.3REY=833661.0HCE=	10.0SEND	.0		
YLH NB					REX=822153.8REY=833597.4HCE=	10.7SEND	.0		
UFN=	4.0CAT=	2.0RSX=821747.8RSY=833006.2HCS=			REX=822148.6REY=833543.3HCE=	11.4SEND	.0		
11.7					REX=822130.1REY=833449.4HCE=	12.1SEND	.0		
SEG=	14.0				REX=822109.6REY=833387.1HCE=	12.8SEND	.0		
RST=	2.0RTD=	10.0			TEXT				
REX=821913.8REY=833157.7HCE=					RSX=822108.6RSY=833387.1HCS=	12.8			
13.1SEND					REX=822071.4REY=833304.1HCE=	13.5SEND	.0		
TEXT					UFN=	24.0			
REX=821978.7REY=833220.9HCE=									
13.4SEND									
TEXT									
RSX=822113.1RSY=833629.3HCS=									
14.5									
SEG=	21.0								
REX=822114.0REY=833739.5HCE=									
15.5SEND									
REX=822114.9REY=833805.5HCE=									
17.4SEND									

REX=822032.4REY=833240.1HCE=	14.1SEND	.0	UFN=	11.0	
REX=822002.8REY=833196.5HCE=	14.8SEND	.0	REX=822097.1REY=833969.2HCE=	10.0SEND	.0
REX=821945.7REY=833127.8HCE=	15.5SEND	.0			
REX=821862.3REY=833046.9HCE=	16.7SEND	.0	TEXT		
REX=821777.8REY=832972.7HCE=	16.7SEND	.0			
TEXT			RSX=822096.9RSY=833969.1HCS=	10.0	
SLIP RD (CP RD TO ROUNDABOUT)			REX=822114.7REY=834026.6HCE=	11.2SEND	.0
UFN= 14.0CAT= 4.0RSX=822362.9RSY=833874.3HCS=			REX=822121.4REY=834047.7HCE=	11.1SEND	.0
7.0			REX=822128.1REY=834067.3HCE=	11.1SEND	.0
REX=822283.4REY=833873.8HCE=	5.3SEND	.0	UFN= 28.0		
REX=822203.9REY=833866.6HCE=	7.8SEND	.0	REX=822152.1REY=834119.4HCE=	11.0SEND	.0
TEXT			UFN= 18.0		
			REX=822165.8REY=834143.6HCE=	9.4SEND	.0
REX=822166.4REY=833870.3HCE=	8.5SEND	.0	REX=822190.1REY=834179.1HCE=	7.7SEND	.0
			TEXT		
TEXT			YLH - NB (to Kowloon)		
SLIP RD (ROUNDABOUT TO POK OI & YL HIGHWAY)			RST= 2.0RTD= 10.0		
UFN= 13.0RSX=822169.1RSY=833906.2HCS=	8.6		REX=822239.1REY=834241.1HCE=	7.0SEND	.0
WCY= 2.0			TEXT		
REX=822212.9REY=833900.2HCE=	7.1SEND	.0			
TEXT			REX=822295.1REY=834297.3HCE=	6.9SEND	.0
			REX=822341.3REY=834333.3HCE=	6.8SEND	.0
UFN= 26.0			REX=822389.4REY=834361.6HCE=	6.8SEND	.0
WCY= 1.8			REX=822462.1REY=834393.4HCE=	6.8SEND	.0
REX=822239.0REY=833900.8HCE=	5.3SEND	.0	REX=822617.8REY=834430.8HCE=	7.5SEND	.0
TEXT			TEXT		
			ROUNDABOUT		
UFN= 15.0CAT= 1.0RSX=822248.5RSY=833904.2HCS=			UFN= 7.0CAT= 4.0RSX=822140.2RSY=833926.4HCS=		
5.3			8.7		
WCY= 3.5			WCY= 5.0		
REX=822262.5REY=833921.6HCE=	5.2SEND	.0	RST= 0.0RTD= 1.2		
WCY= 3.0			REX=822167.8REY=833905.3HCE=	8.6SEND	.0
REX=822249.0REY=833938.8HCE=	5.2SEND	.0	TEXT		
REX=822225.9REY=833938.2HCE=	6.3SEND	.0			
REX=822210.3REY=833948.7HCE=	7.4SEND	.0	HCG= 6.0		
REX=822198.4REY=833982.8HCE=	8.0SEND	.0	REX=822164.5REY=833869.9HCE=	8.5SEND	.0
REX=822177.8REY=833994.1HCE=	9.0SEND	.0			
REX=822155.4REY=833980.7HCE=	9.9SEND	.0	TEXT		
TEXT			RSX=822165.3RSY=833870.9HCS=	8.5HCG=	0.0
SLIP RD (YL HIGHWAY TO ROUNDABOUT)			REX=822138.1REY=833850.3HCE=	8.5SEND	.0
UFN= 30.0RSX=822215.3RSY=834166.3HCS=	7.2		TEXT		
WCY= 3.5					
REX=822194.4REY=834126.3HCE=	7.6SEND	.0	CAT= 3.0RSX=822138.4RSY=833849.8HCS=	8.5	
REX=822180.4REY=834093.2HCE=	10.2SEND	.0	REX=822101.9REY=833850.8HCE=	8.4SEND	.0
REX=822168.8REY=834057.0HCE=	10.5SEND	.0	REX=822077.0REY=833872.0HCE=	8.5SEND	.0
TEXT			HCG= 5.6		
			REX=822076.5REY=833903.0HCE=	8.5SEND	.0
UFN= 12.0			HCG= 0.0		
REX=822150.3REY=833977.4HCE=	9.9SEND	.0	REX=822103.1REY=833927.4HCE=	8.3SEND	.0
			CAT= 4.0		
TEXT			REX=822141.3REY=833927.4HCE=	8.7SEND	.0
			TEXT		
UFN= 25.0RSX=822150.2RSY=833977.4HCS=	9.9				
REX=822148.6REY=833927.6HCE=	8.7SEND	.0	UFN= 26.0RSX=822238.9RSY=833900.6HCS=	5.3	
			WCY= 1.8		
TEXT			REX=822283.8REY=833898.9HCE=	5.3SEND	.0
SLIP RD (ROUNDABOUT TO CP RD)					
UFN= 8.0CAT= 3.0RSX=822071.9RSY=833874.1HCS=	8.5		TEXT		
WCY= 1.8			YLH - SB (to flyover)		
REX=821970.1REY=833878.5HCE=	4.2SEND	.0	UFN= 32.0CAT= 1.0RSX=822630.4RSY=834400.9HCS=	6.1	
			SEG= 149.0WCY= 3.5		
TEXT			RST= 2.0RTD= 10.0		
SLIP RD (CP RD TO YL HIGHWAY)			REX=822564.4REY=834396.3HCE=	5.6SEND	.0
UFN= 16.0RSX=821910.1RSY=833901.5HCS=	4.1		TEXT		
REX=821969.6REY=833905.0HCE=	4.2SEND	.0			
			REX=822488.1REY=834378.8HCE=	6.2SEND	.0
TEXT			REX=822433.4REY=834358.3HCE=	6.2SEND	.0
SLIP RD (CP RD TO YL HIGHWAY)			REX=822385.9REY=834333.9HCE=	6.2SEND	.0
RSX=821970.0RSY=833903.8HCS=	4.2		REX=822351.9REY=834313.1HCE=	6.2SEND	.0
WCY= 3.5			REX=822315.8REY=834289.3HCE=	6.2SEND	.0
REX=822030.1REY=833911.2HCE=	4.2SEND	.0	REX=822285.6REY=834263.1HCE=	6.3SEND	.0
			REX=822254.9REY=834231.3HCE=	6.3SEND	.0
TEXT			REX=822207.1REY=834169.1HCE=	7.2SEND	.0
			TEXT		
RSX=822030.3RSY=833911.3HCS=	7.2		YLH Flyover - SB		
REX=822065.6REY=833916.4HCE=	8.3SEND	.0	REX=822185.4REY=834130.3HCE=	7.6SEND	.0
			TEXT		
TEXT					
CAT= 1.0RSX=822066.1RSY=833916.5HCS=	8.3		REX=822169.4REY=834097.4HCE=	10.2SEND	.0
REX=822086.9REY=833941.6HCE=	8.9SEND	.0	TEXT		

REX=822153.4REY=834058.9HCE=	11.5SEND	.0	TEXT	
TEXT			UFN=	22.0RSX=822121.9RSY=833601.4HCS= 14.3
REX=822141.5REY=834017.4HCE=	12.9SEND	.0	REX=822121.8REY=833567.2HCE=	14.0SEND .0
REX=822132.7REY=833972.4HCE=	15.2SEND	.0	REX=822119.3REY=833519.9HCE=	13.6SEND .0
TEXT			REX=822113.8REY=833472.9HCE=	14.0SEND .0
CAT=	2.0RSX=822124.4RSY=833805.0HCS=	17.4	REX=822100.4REY=833420.1HCE=	14.3SEND .0
REX=822122.9REY=833739.5HCE=	15.5SEND	.0	REX=822088.4REY=833381.4HCE=	14.0SEND .0
REX=822121.9REY=833601.4HCE=	14.3SEND	.0	REX=822073.1REY=833345.4HCE=	13.7SEND .0
TEXT			REX=822053.6REY=833308.0HCE=	13.6SEND .0
UFN=	22.0RSX=822032.6RSY=833272.3HCS=	13.6	REX=822032.6REY=833272.3HCE=	13.6SEND .0
SEG=	169.0		TEXT	
REX=821987.4REY=833214.4HCE=	13.4SEND	.0	UFN=	21.0CAT= 5.0RSX=822157.8RSY=833977.2HCS=
REX=821921.8REY=833148.6HCE=	13.1SEND	.0	SEG=	201.0WCY= 2.0
REX=821756.8REY=832996.0HCE=	11.7SEND	.0	RST=	0.0RTD= 1.2
TEXT			REX=822157.9REY=833945.9HCE=	9.0SEND .0
CP RD WB			TEXT	
UFN=	3.0CAT= 4.0RSX=822568.4RSY=833867.4HCS=		SEG=	183.0
9.6			REX=822167.0REY=833924.2HCE=	8.7SEND .0
RST=	1.0RTD= 1.2		REX=822186.9REY=833910.7HCE=	8.4SEND .0
REX=822495.4REY=833875.0HCE=	8.8SEND	.0	REX=822214.1REY=833902.9HCE=	7.1SEND .0
TEXT			TEXT	
REX=822362.8REY=833874.4HCE=	7.0SEND	.0	New Slip Road C	
TEXT			UFN=	10.0RSX=822126.4RSY=833600.6HCS= 14.3
UFN=	31.0RSX=822363.1RSY=833881.1HCS=	7.0	REX=822128.9REY=833556.8HCE=	12.8SEND .0
SEG=	175.0		TEXT	
RCT=	1.0		REX=822129.5REY=833504.8HCE=	13.7SEND .0
REX=822282.8REY=833882.9HCE=	5.3SEND	.0	REX=822123.4REY=833460.9HCE=	13.1SEND .0
REX=822164.3REY=833884.1HCE=	1.6SEND	.0	REX=822108.5REY=833405.1HCE=	12.6SEND .0
DEL=	7.0		REX=822090.1REY=833354.6HCE=	13.1SEND .0
REX=822094.0REY=833884.8HCE=	1.3SEND	.0	WCY=	1.5
CAT=	3.0		REX=822068.9REY=833305.4HCE=	13.5SEND .0
DEL=	4.3		TEXT	
REX=822041.4REY=833885.3HCE=	2.9SEND	.0	New Flyover	
DEL=	0.6		UFN=	9.0RSX=822075.3RSY=833412.8HCS= 13.0
REX=821970.4REY=833886.3HCE=	4.2SEND	.0	SEG=	301.0WCY= 1.8
TEXT			REX=822088.5REY=833464.1HCE=	12.4SEND .0
UFN=	34.0RSX=821970.4RSY=833880.9HCS=	4.2	TEXT	
RCT=	0.0		WCY=	2.2
REX=821897.6REY=833884.8HCE=	4.1SEND	.0	REX=822093.5REY=833502.9HCE=	12.0SEND .0
REX=821787.1REY=833884.6HCE=	4.7SEND	.0	WCY=	3.0
TEXT			REX=822094.9REY=833535.9HCE=	11.9SEND .0
UFN=	5.0RSX=822086.0RSY=833607.9HCS=	10.9	UFN=	27.0
RST=	0.0		REX=822095.8REY=833583.4HCE=	11.8SEND .0
REX=822085.1REY=833665.6HCE=	10.2SEND	.0	HCG=	1.7
REX=822082.3REY=833729.4HCE=	9.5SEND	.0	RST=	2.0RTD= 10.0
TEXT			REX=822097.4REY=833673.8HCE=	13.4SEND .0
UFN=	4.0RSX=821978.7RSY=833220.9HCS=	13.4	HCG=	4.5
RST=	2.0RTD= 10.0		REX=822099.1REY=833739.5HCE=	14.5SEND .0
REX=822002.7REY=833248.8HCE=	13.5SEND	.0	TEXT	
TEXT			HCG=	6.2
REX=822024.1REY=833277.9HCE=	13.6SEND	.0	REX=822101.0REY=833806.5HCE=	15.8SEND .0
TEXT			TEXT	
RSX=822064.3RSY=833349.6HCS=	13.7		RSX=822109.8RSY=833976.9HCS=	14.6HCG= 3.7
SEG=	187.0		SEG=	311.0WCY= 2.6
REX=822079.3REY=833385.1HCE=	14.0SEND	.0	REX=822121.2REY=834024.8HCE=	12.8SEND .0
REX=822092.1REY=833423.2HCE=	14.3SEND	.0	HCG=	1.1
REX=822104.4REY=833475.4HCE=	14.0SEND	.0	REX=822134.3REY=834065.1HCE=	11.8SEND .0
REX=822110.3REY=833520.6HCE=	13.6SEND	.0	UFN=	29.0HCG= 0.4
REX=822112.6REY=833567.6HCE=	14.0SEND	.0	REX=822158.3REY=834116.9HCE=	9.6SEND .0
REX=822113.1REY=833629.3HCE=	14.5SEND	.0	RETN	0.0
TEXT			TEXT	
RSX=822024.1RSY=833277.9HCS=	13.6		TEXT	
REX=822044.6REY=833311.8HCE=	13.6SEND	.0	EXISTING BARRIER ALONG YLH	
REX=822064.3REY=833349.6HCE=	13.7SEND	.0	NBA=	3.0BSX=822115.2BSY=833976.3HBS= 18.7FOA=
			0.0WBA=	0.0
			ABA=	0.0
			BEX=822125.7BEY=834021.8HBE=	16.4

NBA= 4.0		NBA= 55.0	
BEX=822138.9BEY=834064.6HBE= 15.0		BEX=821915.1BEY=833619.0HBE= 131.5	
TEXT		NBA= 56.0	
		BEX=821894.1BEY=833599.0HBE= 131.5	
NBA= 7.0BSX=822139.5BSY=833970.8HBS= 18.7		NBA= 57.0	
BEX=822148.8BEY=834014.8HBE= 16.4		BEX=821907.2BEY=833597.7HBE= 131.5	
NBA= 8.0		NBA= 58.0	
BEX=822161.6BEY=834059.6HBE= 15.0		BEX=821893.4BEY=833626.2HBE= 131.5	
TEXT		TEXT	
YOHO TOWN PHASE 2 (UNDER CONSTRUCTION)		YOHO TOWN PHASE 1 (BLOCK 3)	
NBA= 31.0BSX=821716.4BSY=833864.9HBS= 28.4		NBA= 59.0BSX=821894.1BSY=833587.3HBS= 131.5	
BEX=821716.4BEY=833840.8HBE= 28.4		BEX=821906.2BEY=833588.5HBE= 131.5	
TEXT		TEXT	
NBA= 32.0		NBA= 60.0	
BEX=821898.1BEY=833861.0HBE= 28.4		BEX=821885.8BEY=833567.4HBE= 131.5	
NBA= 33.0		NBA= 61.0	
BEX=821896.6BEY=833835.3HBE= 28.4		BEX=821885.8BEY=833580.9HBE= 131.5	
NBA= 34.0		NBA= 62.0	
BEX=821716.4BEY=833864.9HBE= 28.4		BEX=821915.3BEY=833567.1HBE= 131.5	
TEXT		NBA= 63.0	
POND FISH WHOLESALE MARKET		BEX=821915.3BEY=833578.3HBE= 131.5	
NBA= 35.0BSX=821954.2BSY=833862.0HBS= 12.6		NBA= 64.0	
BEX=822062.7BEY=833820.1HBE= 12.6		BEX=821893.2BEY=833560.9HBE= 131.5	
TEXT		NBA= 65.0	
		BEX=821908.0BEY=833558.9HBE= 131.5	
NBA= 36.0		NBA= 66.0	
BEX=822064.9BEY=833837.8HBE= 12.6		BEX=821894.2BEY=833587.3HBE= 131.5	
NBA= 37.0		TEXT	
BEX=821948.8BEY=833831.4HBE= 12.6		YOHO TOWN PHASE 1 (BLOCK 5)	
NBA= 38.0		NBA= 67.0BSX=821892.8BSY=833549.7HBS= 128.0	
BEX=821953.4BEY=833862.1HBE= 12.6		BEX=821907.3BEY=833550.9HBE= 128.0	
TEXT		TEXT	
KWONG MING YING LOI SCHOOL		NBA= 68.0	
NBA= 39.0BSX=821978.6BSY=833717.1HBS= 26.7		BEX=821885.0BEY=833529.8HBE= 128.0	
BEX=821978.5BEY=833674.8HBE= 26.7		NBA= 69.0	
TEXT		BEX=821884.9BEY=833543.6HBE= 128.0	
		NBA= 70.0	
NBA= 40.0		BEX=821914.3BEY=833529.1HBE= 128.0	
BEX=822058.4BEY=833709.2HBE= 26.7		NBA= 71.0	
NBA= 41.0		BEX=821914.5BEY=833542.7HBE= 128.0	
BEX=822057.6BEY=833674.8HBE= 26.7		NBA= 72.0	
TEXT		BEX=821893.4BEY=833522.6HBE= 128.0	
		NBA= 73.0	
NBA= 42.0BSX=822056.4BSY=833675.1HBS= 26.7		BEX=821907.2BEY=833521.2HBE= 128.0	
BEX=821979.4BEY=833717.4HBE= 26.7		NBA= 74.0	
TEXT		BEX=821893.0BEY=833549.8HBE= 128.0	
		TEXT	
YOHO TOWN PHASE 1 (BLOCK 1)		YOHO TOWN PHASE 1 (BLOCK 6)	
NBA= 43.0BSX=821894.8BSY=833664.8HBS= 135.0		NBA= 75.0BSX=821891.2BSY=833511.8HBS= 124.0	
BEX=821907.5BEY=833664.8HBE= 135.0		BEX=821906.4BEY=833511.8HBE= 124.0	
TEXT		TEXT	
		NBA= 76.0	
NBA= 44.0		BEX=821880.9BEY=833490.6HBE= 124.0	
BEX=821886.4BEY=833644.2HBE= 135.0		NBA= 77.0	
NBA= 45.0		BEX=821882.7BEY=833502.9HBE= 124.0	
BEX=821886.3BEY=833657.4HBE= 135.0		NBA= 78.0	
NBA= 46.0		BEX=821916.7BEY=833490.6HBE= 124.0	
BEX=821916.2BEY=833644.6HBE= 135.0		NBA= 79.0	
NBA= 47.0		BEX=821914.8BEY=833504.8HBE= 124.0	
BEX=821916.2BEY=833657.5HBE= 135.0		NBA= 80.0	
NBA= 48.0		BEX=821891.1BEY=833486.1HBE= 124.0	
BEX=821893.8BEY=833637.3HBE= 135.0		NBA= 81.0	
NBA= 49.0		BEX=821906.7BEY=833486.0HBE= 124.0	
BEX=821908.3BEY=833636.3HBE= 135.0		NBA= 82.0	
NBA= 50.0		BEX=821891.2BEY=833511.8HBE= 124.0	
BEX=821895.3BEY=833664.8HBE= 135.0		TEXT	
TEXT		SUN YUEN LONG CENTRE (BLOCK 5)	
YOHO TOWN PHASE 1 (BLOCK 2)		NBA= 83.0BSX=821726.1BSY=833993.3HBS= 117.0	
NBA= 51.0BSX=821893.7BSY=833626.1HBS= 131.5		BEX=821741.0BEY=833993.3HBE= 117.0	
BEX=821908.5BEY=833627.0HBE= 131.5		TEXT	
TEXT			
		NBA= 84.0	
NBA= 52.0		BEX=821725.8BEY=833954.8HBE= 117.0	
BEX=821885.6BEY=833606.4HBE= 131.5		NBA= 85.0	
NBA= 53.0		BEX=821740.0BEY=833954.8HBE= 117.0	
BEX=821885.6BEY=833618.6HBE= 131.5		NBA= 86.0	
NBA= 54.0		BEX=821714.5BEY=833981.3HBE= 117.0	
BEX=821915.1BEY=833606.4HBE= 131.5		NBA= 87.0	

BEX=821714.5BEY=833966.6HBE=	117.0	NBA=	120.0
NBA=	88.0	BEX=822344.5BEY=833994.8HBE=	43.5
BEX=821752.9BEY=833980.9HBE=	117.0	NBA=	121.0
NBA=	89.0	BEX=822367.8BEY=834083.0HBE=	43.5
BEX=821752.9BEY=833965.4HBE=	117.0		
NBA=	90.0	TEXT	
BEX=821726.3BEY=833993.3HBE=	117.0	EXISTING BARRIER ALONG YLH	
		NBA=	122.0BSX=822105.9BSY=833632.6HBS=
TEXT			16.5
SUN YUEN LONG CENTRE (PODIUM)			BEX=822106.1BEY=833663.3HBE=
NBA=	91.0BSX=821748.9BSY=834051.7HBS=	22.5	16.8
	BEX=821758.0BEY=834047.7HBE=	22.5	
TEXT		NBA=	126.0BSX=822107.0BSY=833754.6HBS=
			19.0
NBA=	92.0		BEX=822107.6BEY=833805.9HBE=
BEX=821764.5BEY=834038.0HBE=	22.5		20.9
NBA=	93.0	TEXT	
BEX=821764.7BEY=833971.7HBE=	22.5	NBA=	125.0BSX=822107.0BSY=833724.1HBS=
NBA=	94.0		18.8
BEX=821755.8BEY=833958.9HBE=	22.5		BEX=822107.0BEY=833754.1HBE=
NBA=	95.0		19.0
BEX=821740.7BEY=833950.4HBE=	22.5	TEXT	
NBA=	96.0	NBA=	124.0BSX=822106.8BSY=833693.6HBS=
BEX=821731.0BEY=833950.2HBE=	22.5		18.0
NBA=	97.0		BEX=822107.0BEY=833724.1HBE=
BEX=821719.9BEY=833954.9HBE=	22.5		18.3
NBA=	98.0	TEXT	
BEX=821689.4BEY=833983.9HBE=	22.5	NBA=	123.0BSX=822106.1BSY=833663.3HBS=
NBA=	99.0		17.3
BEX=821682.7BEY=833985.5HBE=	22.5		BEX=822106.8BEY=833693.6HBE=
NBA=	100.0		17.5
BEX=821639.1BEY=833986.4HBE=	22.5	TEXT	
		NBA=	127.0BSX=822129.5BSY=833600.9HBS=
TEXT			15.4
DSD PUMPING STATION			BEX=822129.9BEY=833631.6HBE=
NBA=	101.0BSX=822283.7BSY=833799.7HBS=	14.4	15.6
	BEX=822312.7BEY=833821.7HBE=	14.4	
TEXT		NBA=	128.0BSX=822130.1BSY=833631.8HBS=
			16.0
NBA=	102.0		BEX=822130.0BEY=833660.9HBE=
BEX=822280.0BEY=833814.6HBE=	14.4		16.2
NBA=	103.0	TEXT	
BEX=822316.1BEY=833805.4HBE=	14.4	NBA=	129.0BSX=822130.0BSY=833660.9HBS=
			16.7
TEXT			BEX=822130.4BEY=833690.7HBE=
POK OI HOSTIPAL JOCKEY CLUB CARE & ATTENTION HOUSE			17.0
NBA=	104.0BSX=822287.0BSY=833987.3HBS=	29.5	17.0
	BEX=822283.5BEY=833974.4HBE=	29.5	18.0
TEXT			BEX=822130.8BEY=833722.9HBS=
		NBA=	131.0BSX=822130.8BSY=833722.9HBS=
NBA=	105.0		18.8
BEX=822288.2BEY=833973.2HBE=	29.5		BEX=822131.1BEY=833749.6HBE=
NBA=	106.0		19.0
BEX=822281.3BEY=833948.2HBE=	29.5	NBA=	132.0
NBA=	107.0		BEX=822132.2BEY=833804.5HBE=
BEX=822274.3BEY=833949.9HBE=	29.5		20.3
NBA=	108.0	TEXT	
BEX=822270.6BEY=833937.7HBE=	29.5	NBA=	133.0BSX=821947.9BSY=833201.3HBS=
NBA=	109.0		14.3
BEX=822291.0BEY=833930.8HBE=	29.5		BEX=821977.2BEY=833230.8HBE=
NBA=	110.0		14.4
BEX=822305.3BEY=833981.1HBE=	29.5	TEXT	
NBA=	111.0	NBA=	134.0
BEX=822286.3BEY=833986.1HBE=	29.5		BEX=822013.3BEY=833276.9HBE=
			14.6
TEXT		TEXT	
POK OI HOSPITAL		NBA=	135.0BSX=822013.3BSY=833277.2HBS=
NBA=	112.0BSX=822367.5BSY=834083.0HBS=	43.5	16.6
	BEX=822409.0BEY=834073.9HBE=	43.5	16.6
TEXT			
		TEXT	
NBA=	113.0	NBA=	136.0
BEX=822374.6BEY=833912.8HBE=	43.5		BEX=822055.3BEY=833351.1HBE=
NBA=	114.0		16.7
BEX=822346.8BEY=833918.6HBE=	43.5	TEXT	
NBA=	115.0	NBA=	138.0BSX=822066.1BSY=833377.1HBS=
BEX=822329.2BEY=833926.8HBE=	43.5		15.9
NBA=	116.0		BEX=822083.1BEY=833425.5HBE=
BEX=822342.2BEY=833975.4HBE=	43.5		16.3
NBA=	117.0	NBA=	139.0
BEX=822308.1BEY=833982.8HBE=	43.5		BEX=822095.3BEY=833474.9HBE=
NBA=	118.0		16.0
BEX=822310.1BEY=833995.8HBE=	43.5	NBA=	140.0
NBA=	119.0		BEX=822101.6BEY=833524.4HBE=
BEX=822332.5BEY=834008.1HBE=	43.5		15.6
		TEXT	

NBA=	137.0	OBSX=822054.9	BSY=833350.2	HBS=	16.2	BEX=822154.8	BEY=833836.3	HBE=	8.5		
						NBA=	181.0				
						BEX=822155.5	BEY=833849.6	HBE=	8.5		
TEXT						NBA=	182.0				
						BEX=822170.0	BEY=833862.3	HBE=	8.5		
NBA=	143.0	OBSX=822007.7	BSY=833225.8	HBS=	14.7	NBA=	183.0				
						BEX=822204.7	BEY=833862.4	HBE=	7.8		
TEXT						NBA=	184.0				
						BEX=822283.7	BEY=833870.4	HBE=	5.3		
NBA=	144.0					TEXT					
BEX=822060.3		BEY=833303.3	HBE=	14.8		SLOPE					
TEXT						NBA=	185.0	OBSX=821724.1	BSY=833033.3	HBS=	17.4
											17.0
						NBA=	186.0				
NBA=	145.0	OBSX=822059.6	BSY=833303.3	HBS=	14.6	BEX=821888.6	BEY=833168.2	HBE=	15.2		
						TEXT					
TEXT						NBA=	187.0				
						BEX=821924.9	BEY=833200.9	HBE=	14.9		
NBA=	142.0	OBSX=821979.3	BSY=833195.4	HBS=	14.3	NBA=	188.0				
						BEX=821960.3	BEY=833233.1	HBE=	14.5		
TEXT						NBA=	189.0				
Existing barriers (0.8m)						BEX=821994.2	BEY=833273.6	HBE=	14.2		
NBA=	154.0	OBSX=821970.1	BSY=833907.4	HBS=	5.0	NBA=	190.0				
						BEX=822032.0	BEY=833332.1	HBE=	13.8		
TEXT						NBA=	191.0				
						BEX=822053.4	BEY=833380.7	HBE=	13.4		
						NBA=	192.0				
NBA=	155.0					BEX=822064.8	BEY=833415.1	HBE=	13.0		
BEX=822080.9		BEY=833944.8	HBE=	9.7		NBA=	193.0				
NBA=	156.0					BEX=822075.8	BEY=833466.3	HBE=	12.4		
BEX=822090.4		BEY=833971.7	HBE=	10.8		TEXT					
TEXT						NBA=	194.0	OBSX=822075.8	BSY=833466.3	HBS=	14.9
Existing barriers (3m)											14.5
NBA=	157.0	OBSX=822090.4	BSY=833971.2	HBS=	13.0	BEX=822079.0	BEY=833504.9	HBE=			
						NBA=	195.0				
						BEX=822082.3	BEY=833543.9	HBE=	14.1		
NBA=	158.0					NBA=	196.0				
BEX=822122.1		BEY=834069.8	HBE=	14.1		BEX=822080.6	BEY=833577.3	HBE=	14.1		
NBA=	159.0					NBA=	197.0	OBSX=822082.1	BSY=833543.5	HBS=	11.6
BEX=822142.1		BEY=834113.4	HBE=	14.0							11.6
NBA=	160.0					BEX=822076.4	BEY=833557.6	HBE=			
BEX=822161.4		BEY=834147.4	HBE=	12.4		NBA=	198.0				
NBA=	161.0					BEX=822080.2	BEY=833577.1	HBE=	11.6		
BEX=822185.1		BEY=834183.6	HBE=	10.7		NBA=	199.0	OBSX=822080.2	BSY=833577.1	HBS=	14.1
TEXT											13.4
Existing barriers (4m)						BEX=822079.3	BEY=833607.0	HBE=			
NBA=	162.0	OBSX=822184.1	BSY=834184.0	HBS=	11.7	NBA=	199.0				
						BEX=822077.9	BEY=833668.3	HBE=	12.7		
						NBA=	199.0	OBSX=822077.9	BSY=833668.3	HBS=	10.2
NBA=	163.0										9.5
BEX=822290.9		BEY=834302.8	HBE=	10.9		BEX=822076.4	BEY=833729.6	HBE=			
NBA=	164.0					TEXT					
BEX=822336.9		BEY=834338.5	HBE=	10.8		NBA=	200.0	OBSX=822076.4	BSY=833729.6	HBS=	9.5
TEXT											9.0
SLOPE						NBA=	201.0				
NBA=	168.0	OBSX=821781.7	BSY=832967.7	HBS=	16.7	BEX=822083.6	BEY=833853.9	HBE=	8.4		
						NBA=	202.0				
						BEX=822067.8	BEY=833871.4	HBE=	8.5		
NBA=	169.0					NBA=	203.0	OBSX=822068.8	BSY=833870.6	HBS=	8.5
BEX=821949.9		BEY=833123.8	HBE=	15.5							4.2
NBA=	170.0					BEX=821945.0	BEY=833873.9	HBE=			
BEX=822007.6		BEY=833192.6	HBE=	14.8		TEXT					
NBA=	171.0					NBA=	204.0	OBSX=822182.0	BSY=834134.0	HBS=	10.2
BEX=822036.7		BEY=833236.4	HBE=	14.1							8.5
NBA=	172.0					NBA=	205.0				
BEX=822076.6		BEY=833301.4	HBE=	13.5		BEX=822251.7	BEY=834233.4	HBE=	7.8		
TEXT						NBA=	206.0	OBSX=822251.2	BSY=834233.4	HBS=	7.8
											7.7
NBA=	173.0					TEXT					
BEX=822113.6		BEY=833384.3	HBE=	12.8		Small Traders New Village					
NBA=	174.0					NBA=	207.0	OBSX=822246.3	BSY=834135.7	HBS=	9.5
BEX=822134.5		BEY=833447.4	HBE=	12.1							9.5
NBA=	175.0					TEXT					
BEX=822153.1		BEY=833542.6	HBE=	11.4		NBA=	208.0				
NBA=	176.0					BEX=822266.8	BEY=834214.9	HBE=	9.5		
BEX=822157.9		BEY=833597.6	HBE=	10.7							
NBA=	177.0										
BEX=822159.7		BEY=833661.2	HBE=	10.0							
NBA=	178.0										
BEX=822162.6		BEY=833744.4	HBE=	9.5							
NBA=	179.0										
BEX=822158.2		BEY=833801.7	HBE=	8.6							
NBA=	180.0										

NBA= 209.0		NBA= 233.0BSX=822314.8BSY=833980.8HBS=	8.9
BEX=822278.7BEY=834129.1HBE=	9.5	BEX=822297.1BEY=833917.8HBE=	8.9
NBA= 210.0		TEXT	
BEX=822327.5BEY=834151.2HBE=	9.5	NBA= 234.0	
TEXT		BEX=822319.7BEY=833913.8HBE=	8.9
Wong Uk Tsuen		NBA= 235.0	
NBA= 211.0BSX=822144.1BSY=834188.4HBS=	12.3	BEX=822340.0BEY=833912.3HBE=	8.9
BEX=822185.9BEY=834200.9HBE=	12.3	NBA= 236.0	
TEXT		BEX=822339.3BEY=833905.9HBE=	8.9
NBA= 212.0		NBA= 237.0	
BEX=822183.6BEY=834207.1HBE=	12.3	BEX=822371.9BEY=833904.4HBE=	8.9
TEXT		NBA= 238.0	
NBA= 213.0		BEX=822370.9BEY=833911.5HBE=	8.9
BEX=822144.1BEY=834182.3HBE=	12.3	TEXT	
TEXT		NBA= 239.0BSX=822283.8BSY=833903.7HBS=	6.3
NBA= 214.0BSX=822085.3BSY=834157.1HBS=	12.3	BEX=822409.3BEY=833899.8HBE=	8.0
BEX=822199.3BEY=834255.5HBE=	12.3	TEXT	
NBA= 215.0		Roadkerb	
BEX=822088.0BEY=834250.9HBE=	12.3	NBA= 240.0BSX=822227.0BSY=833942.0HBS=	6.3
NBA= 216.0		BEX=822214.8BEY=833951.3HBE=	7.4
BEX=822126.8BEY=834173.6HBE=	12.3	TEXT	
TEXT		NBA= 241.0	
Existing Barriers (4m)		BEX=822200.6BEY=833985.8HBE=	8.0
NBA= 217.0BSX=822631.2BSY=834381.3HBS=	10.1	TEXT	
BEX=822568.0BEY=834378.1HBE=	9.6	NBA= 242.0BSX=822200.6BSY=833986.3HBS=	8.0
NBA= 218.0BSX=822499.6BSY=834363.9HBS=	8.2	BEX=822179.4BEY=833997.5HBE=	9.0
BEX=822439.9BEY=834341.8HBE=	8.2	TEXT	
TEXT		Village house	
Existing Barriers (4m)		NBA= 243.0BSX=822189.1BSY=833657.3HBS=	9.2
NBA= 219.0		BEX=822190.3BEY=833665.5HBE=	9.2
BEX=822398.6BEY=834321.2HBE=	8.2	TEXT	
TEXT		NBA= 244.0	
Existing Barriers (4m)		BEX=822185.6BEY=833661.3HBE=	9.2
NBA= 220.0BSX=822398.6BSY=834321.2HBS=	10.2	NBA= 245.0	
BEX=822342.1BEY=834284.9HBE=	10.2	BEX=822193.9BEY=833661.6HBE=	9.2
NBA= 221.0		TEXT	
BEX=822325.6BEY=834279.1HBE=	10.2	NBA= 246.0BSX=822226.1BSY=833685.7HBS=	9.6
NBA= 222.0		BEX=822232.8BEY=833695.1HBE=	9.6
BEX=822293.8BEY=834251.4HBE=	10.3	NBA= 247.0	
NBA= 223.0		BEX=822223.9BEY=833692.9HBE=	9.6
BEX=822266.8BEY=834222.8HBE=	10.3	NBA= 248.0BSX=822223.9BSY=833692.9HBS=	9.6
NBA= 224.0		BEX=822234.8BEY=833688.1HBE=	9.6
BEX=822238.3BEY=834185.8HBE=	11.6	TEXT	
TEXT		SLOPE	
Existing Barriers (4m)		NBA= 260.0BSX=822120.3BSY=833464.8HBS=	14.0
NBA= 217.0BSX=822567.2BSY=834383.3HBS=	9.6	BEX=822127.4BEY=833519.5HBE=	13.6
BEX=822498.1BEY=834368.9HBE=	10.2	TEXT	
TEXT		Ex-Small Traders New Village Public School	
Existing Barriers (3m)		NBA= 262.0BSX=822335.4BSY=834176.2HBS=	9.0
NBA= 225.0BSX=822239.7BSY=834187.3HBS=	10.6	BEX=822325.2BEY=834156.1HBE=	9.0
BEX=822222.6BEY=834163.1HBE=	10.2	TEXT	
TEXT		NBA= 263.0	
NBA= 226.0		BEX=822341.4BEY=834147.3HBE=	9.0
BEX=822201.3BEY=834123.6HBE=	10.6	NBA= 264.0	
NBA= 227.0		BEX=822345.6BEY=834155.4HBE=	9.0
BEX=822186.5BEY=834089.9HBE=	13.2	NBA= 265.0	
NBA= 228.0		BEX=822356.0BEY=834149.6HBE=	9.0
BEX=822170.1BEY=834034.6HBE=	13.5	NBA= 266.0	
TEXT		BEX=822364.2BEY=834162.7HBE=	9.0
Pun Uk		NBA= 267.0	
NBA= 229.0BSX=822276.3BSY=834004.4HBS=	9.4	BEX=822335.4BEY=834176.4HBE=	9.0
BEX=822258.8BEY=834008.4HBE=	9.4	TEXT	
TEXT		Central divider for Castle Peak Road	
NBA= 230.0		NBA= 268.0BSX=821787.4BSY=833892.9HBS=	5.5
BEX=822251.1BEY=833974.6HBE=	9.4	BEX=821900.2BEY=833891.5HBE=	4.9
NBA= 231.0		TEXT	
BEX=822268.6BEY=833969.9HBE=	9.4	NBA= 269.0	
NBA= 232.0		BEX=821970.4BEY=833890.3HBE=	5.0
BEX=822276.8BEY=834003.8HBE=	9.4		
TEXT			
Pok Oi Hospital			

NBA= 270.0		BEX=822474.0BEY=834405.1HBE= 10.8	
BEX=822041.8BEY=833888.7HBE= 3.7		TEXT	
NBA= 271.0		NBA= 296.0	
BEX=822093.6BEY=833888.7HBE= 2.1		BEX=822491.1BEY=834412.7HBE= 10.8	
NBA= 272.0		TEXT	
BEX=822165.1BEY=833888.7HBE= 2.4		NBA= 298.0BSX=822547.8BSY=834428.3HBS= 9.5	
NBA= 273.0		BEX=822621.3BEY=834443.1HBE= 9.5	
BEX=822284.2BEY=833887.7HBE= 6.1		TEXT	
NBA= 274.0		NBA= 299.0BSX=822304.1BSY=834287.6HBS= 7.7	
BEX=822406.1BEY=833883.9HBE= 7.8		BEX=822396.8BEY=834346.3HBE= 7.6	
NBA= 275.0		NBA= 300.0	
BEX=822497.1BEY=833880.8HBE= 9.6		BEX=822465.8BEY=834377.5HBE= 7.6	
NBA= 276.0		NBA= 301.0	
BEX=822570.8BEY=833874.7HBE= 10.4		BEX=822517.8BEY=834392.6HBE= 7.1	
TEXT		NBA= 302.0	
Central divider for existing Yuen Long Highway		BEX=822587.6BEY=834404.1HBE= 8.3	
NBA= 277.0BSX=821917.4BSY=833152.7HBS= 13.9		TEXT	
BEX=821983.1BEY=833216.9HBE= 14.2		NBA= 303.0BSX=822587.4BSY=834403.9HBS= 8.3	
NBA= 278.0		BEX=822629.5BEY=834406.1HBE= 8.3	
BEX=822027.8BEY=833275.6HBE= 14.4		TEXT	
TEXT		TEXT	
NBA= 283.0BSX=822118.0BSY=833629.1HBS= 15.3		NBA= 304.0BSX=822114.8BSY=833520.1HBS= 14.4	
BEX=822118.6BEY=833739.3HBE= 16.3		BEX=822117.7BEY=833567.6HBE= 14.8	
TEXT		NBA= 305.0	
NBA= 284.0		BEX=822118.0BEY=833629.1HBE= 15.3	
BEX=822119.8BEY=833806.3HBE= 18.2		TEXT	
TEXT		NBA= 306.0BSX=822096.5BSY=833421.3HBS= 15.1	
NBA= 288.0BSX=822169.8BSY=834108.0HBS= 11.8		BEX=822108.6BEY=833473.5HBE= 14.8	
BEX=822181.7BEY=834133.8HBE= 10.2		NBA= 307.0	
TEXT		BEX=822114.8BEY=833520.1HBE= 14.4	
NBA= 285.0BSX=822128.4BSY=833973.8HBS= 16.0		TEXT	
BEX=822137.3BEY=834018.6HBE= 13.7		NBA= 308.0BSX=822068.8BSY=833347.7HBS= 14.5	
NBA= 286.0		BEX=822083.8BEY=833382.9HBE= 14.8	
BEX=822149.2BEY=834060.6HBE= 12.3		NBA= 309.0	
NBA= 287.0BSX=822149.2BSY=834060.6HBS= 12.3		BEX=822096.5BEY=833421.3HBE= 15.1	
BEX=822169.5BEY=834108.4HBE= 11.8		TEXT	
TEXT		NBA= 312.0BSX=822075.3BSY=833331.6HBS= 13.7	
Village house		BEX=822091.3BEY=833369.1HBE= 14.0	
NBA= 285.0BSX=822079.6BSY=833278.3HBS= 12.0		NBA= 313.0	
BEX=822083.9BEY=833284.9HBE= 12.0		BEX=822108.9BEY=833417.1HBE= 14.3	
TEXT		TEXT	
NBA= 286.0		NBA= 314.0BSX=822108.9BSY=833417.1HBS= 14.3	
BEX=822089.8BEY=833281.0HBE= 12.0		BEX=822120.3BEY=833464.8HBE= 14.0	
NBA= 287.0		TEXT	
BEX=822085.5BEY=833274.4HBE= 12.0		NBA= 315.0BSX=822027.8BSY=833275.6HBS= 14.4	
TEXT		BEX=822049.2BEY=833310.3HBE= 14.4	
NBA= 288.0BSX=822085.5BSY=833274.4HBS= 12.0		NBA= 316.0	
BEX=822079.6BEY=833277.8HBE= 12.0		BEX=822068.8BEY=833347.7HBE= 14.5	
TEXT		TEXT	
Village house		NBA= 317.0BSX=822489.1BSY=834412.7HBS= 7.6	
NBA= 289.0BSX=822135.0BSY=833254.7HBS= 12.4		BEX=822547.8BEY=834428.3HBE= 8.3	
BEX=822130.4BEY=833260.4HBE= 12.4		TEXT	
TEXT		TEXT	
NBA= 290.0		NBA= 318.0BSX=822244.3BSY=834015.2HBS= 56.0	
BEX=822138.3BEY=833266.8HBE= 12.4		BEX=822266.6BEY=834049.9HBE= 56.0	
NBA= 291.0		TEXT	
BEX=822142.7BEY=833260.6HBE= 12.4		NBA= 319.0BSX=822251.3BSY=834014.8HBS= 56.0	
TEXT		BEX=822260.3BEY=834052.5HBE= 56.0	
NBA= 292.0BSX=822142.7BSY=833260.6HBS= 12.4		TEXT	
BEX=822134.8BEY=833254.7HBE= 12.4		NBA= 320.0BSX=822264.1BSY=834042.6HBS= 56.0	
TEXT			
NBA= 293.0BSX=822337.3BSY=834338.6HBS= 10.8			
BEX=822387.5BEY=834366.3HBE= 10.8			
NBA= 294.0			
BEX=822421.3BEY=834382.8HBE= 10.8			
NBA= 295.0			

BEX=822283.5BEY=834042.9HBE=	56.0	BEX=822103.7BEY=833567.8HBE=	16.0
TEXT		NBA= 329.0	
NBA= 321.0BSX=822267.7BSY=834051.3HBS=	56.0	BEX=822105.9BEY=833632.6HBE=	16.5
BEX=822279.0BEY=834034.2HBE=	56.0	TEXT	
TEXT		NBA= 330.0BSX=821889.7BSY=833366.9HBS=	15.3
NBA= 322.0BSX=822272.6BSY=834022.5HBS=	56.0	BEX=821901.6BEY=833367.2HBE=	15.3
BEX=822286.1BEY=834037.4HBE=	56.0	NBA= 331.0	
TEXT		BEX=821901.3BEY=833378.9HBE=	15.3
NBA= 323.0BSX=822275.6BSY=834020.4HBS=	56.0	NBA= 332.0	
BEX=822282.9BEY=834039.7HBE=	56.0	BEX=821889.6BEY=833378.9HBE=	15.3
TEXT		NBA= 333.0BSX=821889.6BSY=833378.9HBS=	15.3
NBA= 324.0BSX=822173.8BSY=833272.7HBS=	17.8	BEX=821889.7BEY=833366.9HBE=	15.3
BEX=822176.0BEY=833275.8HBE=	17.8	RETN 0.0	
NBA= 325.0		TEXT	
BEX=822185.9BEY=833269.6HBE=	17.8	TEXT	
NBA= 326.0		1 WUT1	
BEX=822183.5BEY=833266.3HBE=	17.8	HRA= 5.4HRG= 1.5OPX=822183.6OPY=834198.6AN1=	
NBA= 327.0BSX=822183.5BSY=833266.3HBS=	17.8	80.0AN2= 235.7	
BEX=822173.8BEY=833272.7HBE=	17.8	REF= 1.0GO .0	
TEXT		HPF= 2.8RPT= 2.0	
Existing Barriers (3m) (set back)		TEXT	
NBA= 251.0BSX=822172.4BSY=834034.8HBS=	13.5	2 STNV1	
BEX=822166.9BEY=834011.9HBE=	13.2	HRA= 5.4OPX=822249.9OPY=834189.7AN1=	210.0AN2=
TEXT		30.0	
Existing Barriers (3m) (set back)		GO .0	
NBA= 252.0		RPT= 1.0	
BEX=822163.2BEY=833997.4HBE=	13.0	TEXT	
TEXT		3 JCCA1	
NBA= 261.0BSX=822126.0BSY=833519.7HBS=	13.6	HRA= 6.4OPX=822270.4OPY=833944.3AN1=	198.0AN2=
BEX=822125.6BEY=833556.8HBE=	12.8	18.0	
TEXT		GO .0	
0.8m high planter wall along new left-turn lane		HPF= 3.0RPT= 5.0	
NBA= 297.0BSX=822161.8BSY=833977.3HBS=	11.4	TEXT	
BEX=822161.9BEY=833946.9HBE=	10.5	4 JCCA2	
TEXT		HRA= 6.4OPX=822275.3OPY=833933.9AN1=	128.4AN2=
NBA= 298.0		289.2	
BEX=822169.6BEY=833926.8HBE=	10.2	GO .0	
NBA= 299.0		RPT= 5.0	
BEX=822188.3BEY=833914.1HBE=	9.9	TEXT	
NBA= 300.0		5 V1	
BEX=822216.2BEY=833906.1HBE=	8.6	HRA= 6.1OPX=822222.5OPY=833689.3AN1=	155.7AN2=
TEXT		335.7	
NBA= 301.0BSX=822216.2BSY=833906.1HBS=	8.6	GO .0	
BEX=822239.0BEY=833906.1HBE=	6.8	HPF= 2.5RPT= 1.0	
TEXT		TEXT	
0.8m Planter wall along new flyover		6 V2	
NBA= 302.0BSX=822092.4BSY=833583.0HBS=	12.9	HRA= 5.7OPX=822185.6OPY=833665.3AN1=	226.5AN2=
BEX=822093.4BEY=833673.9HBE=	14.5	34.0	
TEXT		GO .0	
NBA= 303.0		RPT= 1.0	
BEX=822095.1BEY=833739.1HBE=	15.6	TEXT	
NBA= 304.0		7 V3	
BEX=822096.8BEY=833806.4HBE=	16.9	HRA= 8.1OPX=822080.0OPY=833282.1AN1=	212.0AN2=
TEXT		32.0	
NBA= 308.0BSX=822106.2BSY=833977.0HBS=	15.7	GO .0	
BEX=822118.4BEY=834025.5HBE=	13.9	RPT= 1.0	
TEXT		TEXT	
NBA= 309.0BSX=822118.4BSY=834025.5HBS=	13.9	8 V4	
BEX=822131.8BEY=834066.0HBE=	12.9	HRA= 8.9OPX=822133.3OPY=833264.5AN1=	232.0AN2=
TEXT		52.0	
NBA= 328.0BSX=822101.6BSY=833524.4HBS=	15.6	GO .0	
		RPT= 1.0	
		TEXT	
		9 V5	
		HRA= 9.3OPX=822173.9OPY=833275.0AN1=	214.0AN2=
		34.0	
		GO .0	
		RPT= 3.0	

TEXT
 10 V6
 HRA= 6.8OPX=821902.4OPY=833375.7AN1= 0.0AN2=
 180.0
 GO .0
 RPT= 2.0

TEXT
 11 YT1
 HRA= 11.5HRG= 6.5OPX=821919.5OPY=833648.0AN1=
 1.0AN2= 181.0
 GO .0
 HPF= 15.0RPT= 7.0

TEXT
 12 YT2
 HRA= 11.5OPX=821918.1OPY=833570.4AN1= 1.0AN2=
 181.0
 GO .0
 RPT= 7.0

TEXT
 13 YT3
 HRA= 11.5OPX=821919.9OPY=833493.1AN1= 1.0AN2=
 181.0
 GO .0
 RPT= 7.0

TEXT
 14 KMYLS1
 HRA= 6.8HRG= 1.5OPX=822054.3OPY=833710.0AN1=
 275.9AN2= 90.0
 GO .0
 HPF= 3.0RPT= 4.0

TEXT
 15 KMYLS2
 HRA= 6.8OPX=822048.2OPY=833673.5AN1= 100.1AN2=
 270.0
 GO .0
 RPT= 4.0

TEXT
 16 ND1
 HRA= 41.6HRG= 36.6OPX=821930.4OPY=833814.8AN1=
 0.0AN2= 180.0
 GO .0
 HPF= 15.0RPT= 9.0

TEXT
 17 ND2
 HRA= 37.6HRG= 32.1OPX=822073.5OPY=833968.7AN1=
 10.0AN2= 190.0
 GO .0
 RPT= 9.0

TEXT
 18 ND3
 HRA= 37.6OPX=822059.3OPY=833941.4AN1= 40.0AN2=
 220.0
 GO .0
 RPT= 9.0

TEXT
 19 PS1
 HRA= 6.7HRG= 1.5OPX=822022.3OPY=833599.4AN1=
 25.0AN2= 180.0
 GO .0
 HPF= 3.0RPT= 6.0

TEXT
 20 Pun Uk
 HRA= 6.5OPX=822272.4OPY=834025.0AN1= 219.0AN2=
 245.0
 GO .0
 RPT= 16.0

TEXT
 21 ExSTNVPS1
 HRA= 5.4OPX=822328.8OPY=834167.3AN1= 207.0AN2=
 27.0
 GO .0

RETN 0.0