

Annex E

Tree Survey Information

Annex E1

Tree Survey Schedule

(Improvement to Pok Oi Interchange)
Tree Assessment Schedule

Drawing No. HSDWU2518-TS0001B-TS0004A

Tree no.	Tree Species (Botanical name)	Chinese Name (Hong Kong)	Tree Maintenance Dept.	Tree Size			Amenity Value	Form	Health	Survival Rate after Transplanting			Recommendation				Remarks ²	Ref Drawing
				Height	Average crown spread	Trunk ¹ (diameter)				High	Medium	Low	Transplant	Retain	Fell	Pruning		
				(m)	(m)	(m)	High	Medium	Low	Good	Fair	Poor	High	Medium	Low	Transplant		
306	Casuarina equisetifolia	木麻黃	HyD	6.0	3.0	0.10	P	P	L			L					Seriously leaning, suppressed	TS0003B
307	Acacia mangium	大葉相思	HyD	12.0	3.0	0.18	F	F	L			L					Leaning, asymmetric crown with some branches died back	TS0003B
308	Acacia mangium	大葉相思	HyD	18.0	5.0	0.40	F	F	L			L					Forked trunk, asymmetric crown with some branches died back	TS0003B
309	Acacia mangium	大葉相思	HyD	15.0	3.0	0.16	P	P	L			L					Crooked trunk, asymmetric crown, most branches died back	TS0003B
310	Casuarina equisetifolia	木麻黃	HyD	11.0	6.0	0.23	F	F	L			L					Asymmetric crown, lower branches died back	TS0003B
311	Casuarina equisetifolia	木麻黃	HyD	11.0	7.0	0.34	F	F	L			L					Crooked trunk, asymmetric crown, lower branches died back	TS0003B
312	Acacia mangium	大葉相思	HyD	21.0	5.0	0.22	F	F	L			L					Leaning, asymmetric crown with some branches died back	TS0003B
313	Acacia mangium	大葉相思	HyD	11.0	4.0	0.16	F	F	L			L					Asymmetric crown with some branches died back	TS0003B
314	Acacia mangium	大葉相思	HyD	20.0	6.0	0.20	F	F	L			L					Asymmetric crown with some branches died back	TS0003B
315	Acacia mangium	大葉相思	HyD	12.0	6.0	0.21	F	F	L			L					Asymmetric crown with some branches died back	TS0003B
323	Leucaena leucocephala	銀合歡	HyD	11.0	7.0	0.30	F	P	L			L					Seriously leaning with some branches broken and died back	TS0003B
324	Macaranga tanarius	血桐	HyD	6.0	4.5	0.13	P	P	L			L					Crooked trunk with many decaying wounds & broken branches	TS0003B
325	Macaranga tanarius	血桐	HyD	6.0	3.0	0.13	P	P	L			L					Crooked trunk with many decaying wounds & broken branches	TS0003B
326	Leucaena leucocephala	銀合歡	HyD	6.0	3.5	0.10	F	F	L			L					Leaning with some broken branches	TS0003B
327	Macaranga tanarius	血桐	HyD	3.0	2.0	0.10	P	P	L			L					Topped trunk with decaying wounds	TS0003B
328	Macaranga tanarius	血桐	HyD	4.0	3.0	0.10	P	P	L			L					Crooked trunk with many decaying wounds & broken branches	TS0003B
329	Casuarina equisetifolia	木麻黃	HyD	15.0	4.0	0.15	F	F	L			L					Asymmetric crown, lower branches died back	TS0003B
330	Casuarina equisetifolia	木麻黃	HyD	11.0	2.5	0.15	F	F	L			L					Crooked trunk, asymmetric crown, lower branches died back	TS0003B
331	Ficus hispida	對葉榕	HyD	4.0	3.0	0.10	G	G	L			M					Minor improper pruning wounds	TS0003B
332	Casuarina equisetifolia	木麻黃	HyD	20.0	4.0	0.20	F	F	L			L					Asymmetric crown, lower branches died back	TS0003B
337	Bauhinia purpurea	紅花羊蹄甲	HyD	7.5	5.5	0.10	F	F	L			M					Slender trunk, sparse foliage	TS0003B
338	Bauhinia purpurea	紅花羊蹄甲	HyD	3.5	5.0	0.10	F	F	L			M					Sparse foliage, some branches broken	TS0003B
348	Bauhinia purpurea	紅花羊蹄甲	HyD	6.5	4.5	0.08	F	F	L			M					Slender & leaning trunk, sparse foliage	TS0003B
349	Bauhinia purpurea	紅花羊蹄甲	HyD	4.0	5.0	0.08	F	F	L			M					Sparse foliage, some broken branches & improper pruning cuts	TS0003B
355	Bauhinia purpurea	紅花羊蹄甲	HyD	6.0	4.0	0.08	F	P	L			L					Twin trunk twisted together, some branches died back	TS0003B
437	Leucaena leucocephala	銀合歡	LCSD	6.0	8.0	0.40	F	F	L			L					Multi-trunk with included bark, some branches died back & broken	TS0003B
438	Koelreuteria bipinnata	復羽葉欖樹	LCSD	6.0	8.0	0.40	F	F	L			L					Crooked & forked trunk, improper pruning cuts	TS0003B
439	Koelreuteria bipinnata	復羽葉欖樹	LCSD	6.0	8.0	0.20	P	P	L			L					Twisted trunk with wire-netted fence embedded, asymmetric crown	TS0003B
440	Bombax ceiba	木棉	LCSD	8.0	6.0	0.30	F	F	L			M					Asymmetric crown, improper pruning cuts	TS0003B
442	Leucaena leucocephala	銀合歡	HyD	4.5	4.0	0.06	F	F	L			L					Damaged bark, asymmetric crown	TS0003B
469	Leucaena leucocephala	銀合歡	HyD	7.0	7.0	0.20	F	F	L			L					Multi-trunk, leaning, asymmetric crown with some branches died back	TS0004
470	Celtis sinensis	朴樹	HyD	4.0	3.0	0.08	F	F	L			M					Crooked trunk, improper pruning cuts	TS0004
471	Phyllanthus emblica	餘甘子	HyD	4.0	3.0	0.09	F	F	L			M					Asymmetric crown, some branches died back	TS0004
472	Phyllanthus emblica	餘甘子	HyD	5.0	3.5	0.10	G	G	L			M					Small quantity of died back branches	TS0004
473	Phyllanthus emblica	餘甘子	HyD	5.5	3.0	0.11	G	G	L			M						TS0004
474	Acacia auriculiformis	耳果相思	HyD	7.0	4.0	0.18	G	F	L			L					Crooked trunk, asymmetric crown	TS0002B
475	Acacia auriculiformis	耳果相思	HyD	6.0	2.0	0.10	G	F	L			L					Slender trunk with small crown	TS0002B
476	Acacia confusa	台灣相思	HyD	8.0	10.0	0.38	F	F	L			L					Some branches died back & broken	TS0002B
477	Acacia confusa	台灣相思	HyD	7.0	5.0	0.32	F	F	L			L					Asymmetric crown, some branches died back & broken	TS0002B
478	Macaranga tanarius	血桐	HyD	4.5	7.0	0.20	F	F	L			L					Leaning, some branches died back & broken	TS0002B
479	Acacia confusa	台灣相思	HyD	6.5	6.0	0.30	F	F	L			L					Leaning, some branches died back & broken	TS0002B
480	Acacia auriculiformis	耳果相思	HyD	7.0	3.0	0.18	F	F	L			L					Some branches broken & fallen, damaged bark	TS0002B

(Improvement to Pok Oi Interchange)
Tree Assessment Schedule

Drawing No. HSDWU2518-TS0001B-TS0004A

Tree no.	Tree Species (Botanical name)	Chinese Name (Hong Kong)	Tree Maintenance Dept.	Tree Size			Amenity Value	Form	Health	Survival Rate after Transplanting			Recommendation				Remarks ²	Ref Drawing
				Height	Average crown spread	Trunk ¹ (diameter)				High	Medium	Low	Transplant	Retain	Fell	Pruning		
				(m)	(m)	(m)	High Medium Low	Good Fair Poor	Good Fair Poor	High	Medium	Low	Transplant	Retain	Fell	Pruning		
481	Leucaena leucocephala	銀合歡	HyD	7.5	4.0	0.19	F	F	L			L					Leaning, some branches died back & broken	TS0002B
482	Acacia auriculiformis	耳果相思	HyD	6.0	5.0	0.14	F	F	L			L					Leaning, one branch torn off leaving a large wound	TS0004
496	Lagerstroemia speciosa	大花紫薇	LCSD	4.5	3.0	0.08	G	G	M			M					Minor died back branches	TS0002B
497	Lagerstroemia speciosa	大花紫薇	LCSD	4.5	4.0	0.08	G	G	M			M					Minor died back branches	TS0002B
498	Lagerstroemia speciosa	大花紫薇	LCSD	4.5	3.8	0.10	G	G	M			M					Minor died back branches	TS0002B
499	Lagerstroemia speciosa	大花紫薇	LCSD	5.0	4.0	0.12	G	G	M			M					Minor died back branches	TS0002B
500	Lagerstroemia speciosa	大花紫薇	LCSD	4.0	3.0	0.08	G	G	M			M					Minor died back branches	TS0002B
501	Lagerstroemia speciosa	大花紫薇	LCSD	4.0	2.5	0.10	G	G	M			M					Minor died back branches	TS0002B
502	Lagerstroemia speciosa	大花紫薇	LCSD	4.5	3.8	0.15	G	G	M			M					Minor died back branches	TS0002B
503	Lagerstroemia speciosa	大花紫薇	LCSD	4.0	3.0	0.07	G	G	M			M					Slightly leaning, minor died back branches	TS0002B
504	Lagerstroemia speciosa	大花紫薇	LCSD	4.0	3.5	0.12	G	G	M			M					Slightly leaning, minor died back branches	TS0002B
505	Lagerstroemia speciosa	大花紫薇	LCSD	4.8	3.8	0.10	G	G	M			M					Slightly leaning, minor died back branches	TS0002B
506	Lagerstroemia speciosa	大花紫薇	LCSD	5.0	4.0	0.15	G	G	M			M					Minor died back branches	TS0002B
507	Lagerstroemia speciosa	大花紫薇	LCSD	5.0	4.8	0.15	G	G	M			M					Minor died back branches	TS0002B
508	Lagerstroemia speciosa	大花紫薇	LCSD	5.2	5.0	0.16	G	G	M			M					Minor died back branches	TS0002B
524	Morus alba	桑	HyD	5.6	4.5	0.14	P	F	L			L					Multi-trunk, damaged bark, died back branches, infested with pest	TS0003B
525	Melia azedarach	森樹	HyD	7.0	8.0	0.28	G	F	L			L					Multi-trunk, leaning, asymmetric crown, growing adjacent to a retaining wall	TS0003B
526	Lagerstroemia speciosa	大花紫薇	LCSD	5.0	4.0	0.10	G	G	M			M					Minor died back branches	TS0002B
527	Lagerstroemia speciosa	大花紫薇	LCSD	5.3	4.0	0.08	G	G	M			M					Minor died back branches	TS0002B
528	Lagerstroemia speciosa	大花紫薇	LCSD	5.2	4.5	0.10	G	G	M			M					Minor died back branches	TS0002B
529	Lagerstroemia speciosa	大花紫薇	LCSD	5.2	3.8	0.09	G	G	M			M					Minor died back branches	TS0002B
530	Lagerstroemia speciosa	大花紫薇	LCSD	5.5	4.2	0.09	G	G	M			M					Minor died back branches	TS0002B
531	Lagerstroemia speciosa	大花紫薇	LCSD	4.2	4.0	0.08	G	G	M			M					Minor died back branches	TS0002B
532	Lagerstroemia speciosa	大花紫薇	LCSD	5.0	4.2	0.09	G	G	M			M					Minor died back branches	TS0002B
533	Lagerstroemia speciosa	大花紫薇	LCSD	5.0	3.8	0.09	G	G	M			M					Minor died back branches	TS0002B
534	Lagerstroemia speciosa	大花紫薇	LCSD	4.8	3.0	0.08	G	G	M			M					Minor died back branches	TS0002B
535	Lagerstroemia speciosa	大花紫薇	LCSD	5.5	6.0	0.07	G	G	M			M					Minor died back branches	TS0002B
536	Koeleruteria bipinnata	複羽葉欖樹	LCSD	7.0	9.0	0.31	F	F	M			L					Multi-trunk, leaning, damaged bark, broken branches	TS0002B
537	Lagerstroemia speciosa	大花紫薇	LCSD	5.2	3.0	0.07	G	G	M			M					Minor died back branches	TS0002B
538	Lagerstroemia speciosa	大花紫薇	LCSD	5.0	3.5	0.08	G	G	M			M					Minor died back branches	TS0002B
539	Lagerstroemia speciosa	大花紫薇	LCSD	5.0	3.8	0.07	G	G	M			M					Minor died back branches	TS0002B
540	Lagerstroemia speciosa	大花紫薇	LCSD	4.2	3.6	0.08	G	G	M			M					Minor died back branches	TS0002B
541	Lagerstroemia speciosa	大花紫薇	LCSD	5.2	4.0	0.10	G	G	M			M					Minor died back branches	TS0002B
542	Lagerstroemia speciosa	大花紫薇	LCSD	4.0	3.2	0.09	G	G	M			M					Minor died back branches	TS0002B
543	Leucaena leucocephala	銀合歡	HyD	9.0	6.0	0.25	F	P	L			L					Multi-trunk, leaning, asymmetric crown, broken branches	TS0004
544	Leucaena leucocephala	銀合歡	HyD	8.0	4.5	0.15	P	P	L			L					Collapsed, topped	TS0004
545	Leucaena leucocephala	銀合歡	HyD	9.0	6.0	0.20	P	P	L			L					Collapsed, topped	TS0004
546	Leucaena leucocephala	銀合歡	HyD	9.0	8.0	0.45	F	F	L			L					Asymmetric crown, some branches being cut & broken	TS0004
547	Tree removed		HyD	9.0	6.5	0.25											Only tree stump left on site	TS0004
548	Acacia confusa	台灣相思	HyD	7.5	10.0	0.25	F	F	L			L					Multi-trunk, died back & broken branches	TS0004
549	Ficus hispida	對葉榕	HyD	5.0	3.0	0.10	F	F	L			M					Crooked trunk, asymmetric crown, died back branches	TS0004
550	Bauhinia purpurea	紅花羊蹄甲	HyD	6.5	6.0	0.20	F	F	L			M					Some branches being cut leaving open wounds, asymmetric crown	TS0004

(Improvement to Pok Oi Interchange)
Tree Assessment Schedule

Drawing No. HSDWU2518-TS0001B-TS0004A

Tree no.	Tree Species (Botanical name)	Chinese Name (Hong Kong)	Tree Maintenance Dept.	Tree Size			Amenity Value	Form	Health	Survial Rate after Transplanting			Recommendation				Remarks ²	Ref Drawing
				Height	Average crown spread	Trunk ¹ (diameter)				High	Fair	Poor	Transplant	Retain	Fell	Pruning		
				(m)	(m)	(m)	Low	Fair	Poor	High	Medium	Low						
551	Bauhinia purpurea	紅花羊蹄甲	HyD	7.0	5.0	0.15	P	P	L			L					Cracked bark, infested with pest, died back branches, sparse foliage	TS0004
552	Bauhinia purpurea	紅花羊蹄甲	HyD	6.5	4.5	0.10	F	F	L		M						Asymmetric crown, broken & died back branches	TS0004
553	Acacia confusa	台灣相思	HyD	10.0	13.0	0.60	F	F	L			L					Multi-trunk, leaning, broken & died back branches	TS0004
554	Ficus hispida	對葉榕	HyD	4.5	4.0	0.15	F	F	L		M						Leaning, lower branches died back	TS0004
555	Ficus hispida	對葉榕	HyD	4.5	3.0	0.15	F	F	L		M						Leaning, lower branches died back	TS0004
556	Bauhinia purpurea	紅花羊蹄甲	HyD	3.5	4.0	0.15	G	F	L		M						Slightly leaning, asymmetric crown	TS0004
557	Bauhinia purpurea	紅花羊蹄甲	HyD	5.5	6.0	0.20	F	P	L			L					Serious leaning, root partially exposed, asymmetric crown	TS0004
558	Bauhinia purpurea	紅花羊蹄甲	HyD	4.0	3.0	0.10	P	P	L								Leaning, large wound on trunk, asymmetric crown, died back branches	TS0004
581	Bombax ceiba	木棉	HyD	8.0	5.0	0.26	L	G	G		M						Young tree	TS0003C
582	Melaleuca quinquenervia	白千層	HyD	7.0	2.5	0.14	L	G	G		M						Young tree	TS0003C
583	Melaleuca quinquenervia	白千層	HyD	5.0	2.5	0.13	L	G	G		M						Young tree	TS0003C
584	Melaleuca quinquenervia	白千層	HyD	6.0	2.5	0.14	L	G	G		M						Young tree	TS0003C
585	Melaleuca quinquenervia	白千層	HyD	5.0	2.5	0.12	L	G	G		M						Young tree	TS0003C
586	Bauhinia blakeana	洋紫荆	HyD	3.0	2.5	0.12	L	F	F			L					Crooked trunk, dieback branches, imbalanced crown	TS0003C
587	Bauhinia blakeana	洋紫荆	HyD	4.0	3.0	0.13	L	F	F			L					Crooked trunk, dieback branches, imbalanced crown	TS0003C
588	Bauhinia blakeana	洋紫荆	HyD	3.0	2.5	0.12	L	F	F			L					Crooked trunk, dieback branches, imbalanced crown	TS0003C
589	Sterculia lanceolata	假蘋婆	HyD	3.0	2.5	0.1	L	F	G		M						Young tree with multi-trunk	TS0003C
590	Sterculia lanceolata	假蘋婆	HyD	3.0	2.5	0.12	L	F	G		M						Young tree with imbalanced crown	TS0003C
591	Lagerstroemia speciosa	大花紫薇	HyD	3.5	3.0	0.08	L	F	G		M						Young tree with crooked trunk	TS0003C
592	Bauhinia blakeana	洋紫荆	HyD	3.5	3.0	0.08	L	F	F			L					Leaning trunk, many branches dieback & broken	TS0003C
593	Bauhinia blakeana	洋紫荆	HyD	3.0	2.5	0.09	L	F	F			L					Main trunk decaying, many branches dieback & broken	TS0003C
594	Melaleuca quinquenervia	白千層	HyD	4.5	2.5	0.08	L	F	G		M						Young tree with imbalanced crown	TS0003C
595	Melaleuca quinquenervia	白千層	HyD	4.5	2.5	0.08	L	F	G		M						Young tree with imbalanced crown	TS0003C
596	Melaleuca quinquenervia	白千層	HyD	4.5	2.5	0.09	L	F	G		M						Young tree with imbalanced crown	TS0003C
597	Melaleuca quinquenervia	白千層	HyD	4.0	2.0	0.1	L	F	G		M						Young tree with imbalanced crown	TS0003C
598	Melaleuca quinquenervia	白千層	HyD	4.0	2.5	0.11	L	F	G		M						Young tree with imbalanced crown	TS0003C
599	Melaleuca quinquenervia	白千層	HyD	5.0	4.5	0.18	L	P	P			L					Multi-trunk, broken & dieback branches, sparse foliage	TS0003C
600	Bauhinia blakeana	洋紫荆	HyD	3.0	3.5	0.11	L	P	F			L					Multi-trunk, one trunk broken, imbalanced crown	TS0003C
601	Bauhinia blakeana	洋紫荆	HyD	3.0	3.5	0.12	L	F	F			L					Multi-trunk, dieback & broken branches, imbalanced crown	TS0003C
602	Bauhinia blakeana	洋紫荆	HyD	3.0	3.5	0.1	L	F	F			L					Multi-trunk, one trunk decaying, crooked trunk	TS0003C
603	Bauhinia blakeana	洋紫荆	HyD	3.0	3.5	0.13	L	F	F			L					Multi-trunk, one trunk decaying, crooked trunk	TS0003C
604	Acacia auriculaeformis	耳葉相思	HyD	8.0	5.0	0.16	L	F	G		M						Young tree with crooked trunk	TS0003C
605	Lagerstroemia speciosa	大花紫薇	HyD	4.0	3.5	0.08	L	F	G		M						Young tree with crooked trunk	TS0003C
606	Melaleuca quinquenervia	白千層	HyD	5.5	3.0	0.12	L	G	G		M						Young tree	TS0003C
607	Melaleuca quinquenervia	白千層	HyD	5.5	3.0	0.12	L	F	G		M						Young tree with crooked trunk	TS0003C
608	Melaleuca quinquenervia	白千層	HyD	5.5	3.0	0.11	L	G	G		M						Young tree	TS0003C
609	Bauhinia blakeana	洋紫荆	HyD	5.5	3.0	0.1	L	P	P			L					Multi-trunk, dieback & broken branches, imbalanced crown	TS0003C
610	Lagerstroemia speciosa	大花紫薇	HyD	3.0	2.5	0.07	L	F	F			L					Crooked trunk, stripped bark, dieback branches	TS0003C
611	Melaleuca quinquenervia	白千層	HyD	4.5	2.5	0.07	L	F	G		M						Young tree with crooked trunk	TS0003C

(Improvement to Pok Oi Interchange)
Tree Assessment Schedule

Drawing No. HSDWU2518-TS0001B-TS0004A

Tree no.	Tree Species (Botanical name)	Chinese Name (Hong Kong)	Tree Maintenance Dept.	Tree Size			Amenity Value	Form	Health	Survial Rate after Transplanting			Recommendation				Remarks ²	Ref Drawing
				Height	Average crown spread	Trunk ¹ (diameter)				High	Medium	Low	Transplant	Retain	Fell	Pruning		
				(m)	(m)	(m)	Low	Fair	Poor									
612	Melaleuca quinquenervia	白千層	HyD	5.0	2.5	0.11	L	G	G		M						Young tree	TS0003C
613	Bauhinia blakeana	洋紫荊	HyD	4.5	4.0	0.11	L	P	P			L					Fungal attack, trunk decaying, broken & dieback branches	TS0003C
614	Melaleuca quinquenervia	白千層	HyD	4.5	2.5	0.1	L	G	G		M						Young tree	TS0003C
615	Bauhinia blakeana	洋紫荊	HyD	3.0	2.0	0.07	L	P	P			L					Leaning trunk, trunk decaying, stripped bark	TS0003C
616	Bauhinia blakeana	洋紫荊	HyD	3.5	2.5	0.08	L	P	P			L					Fungal attack, trunk decaying, broken & dieback branches	TS0003C
617	Bauhinia blakeana	洋紫荊	HyD	3.0	2.0	0.1	L	P	P			L					Fungal attack, trunk decaying, broken & dieback branches	TS0003C
618	Bauhinia blakeana	洋紫荊	HyD	3.5	3.0	0.11	L	P	P			L					Fungal attack, trunk decaying, broken & dieback branches	TS0003C
619	Melaleuca quinquenervia	白千層	HyD	4.5	2.5	0.08	L	F	G		M						Young tree with crooked trunk	TS0003C
620	Lagerstroemia speciosa	大花紫薇	HyD	3.5	2.5	0.08	L	P	P			L					Fungal attack, trunk decaying, stripped bark	TS0003C
621	Melaleuca quinquenervia	白千層	HyD	4.5	2.5	0.08	L	F	G		M						Young tree with crooked trunk	TS0003C
622	Eucalyptus robusta	大葉桉	HyD	5.5	2.5	0.08	L	F	G		M						Young tree with crooked trunk	TS0003C
623	Eucalyptus torelliana	毛葉桉	HyD	7.0	3.5	0.11	L	F	F			L					Growing near T624	TS0003C
624	Melaleuca leucadendron	白千層	HyD	6.5	2.5	0.11	L	F	F			L					Growing near T623	TS0003C
625	Melaleuca leucadendron	白千層	HyD	4.0	2.5	0.08	L	F	F		M						Young tree	TS0003C
626	Lagerstroemia speciosa	大花紫薇	HyD	3.0	2.5	0.07	L	F	P			L					Tree bark damaged, forked trunk	TS0003C
627	Eucalyptus torelliana	毛葉桉	HyD	5.0	3.5	0.09	L	F	F			L					Young tree	TS0003C
628	Lagerstroemia speciosa	大花紫薇	HyD	3.5	3.0	0.07	L	P	F			L					Young tree, imbalanced crown	TS0003C
629	Eucalyptus torelliana	毛葉桉	HyD	5.5	3.5	0.09	L	F	F			L					Exposed root	TS0003C
630	Lagerstroemia speciosa	大花紫薇	HyD	3.5	2.5	0.06	L	F	F		M						Young tree, imbalanced crown	TS0003C
631	Eucalyptus torelliana	毛葉桉	HyD	5.0	3.5	0.16	L	F	F			L					Multi-trunk	TS0003C
632	Bauhinia variegata	宮粉羊蹄甲	HyD	3.0	2.5	0.06	L	P	P			L					Young tree, leading branch broken	TS0003C
633	Bauhinia variegata	宮粉羊蹄甲	HyD	3.0	2.5	0.07	L	P	P			L					Young tree, leading branch broken	TS0003C
634	Bauhinia variegata	宮粉羊蹄甲	HyD	4.5	3.0	0.09	L	F	F			L					Imbalance form, also marked with plate No. 443	TS0003C
635	Lagerstroemia speciosa	大花紫薇	HyD	3.0	2.5	0.06	L	F	F		M						Young tree	TS0003C
636	Lagerstroemia speciosa	大花紫薇	HyD	3.5	2.5	0.07	L	F	F			L					Young tree, imbalance form	TS0003C
637	Melaleuca leucadendron	白千層	HyD	5.5	2.5	0.07	L	P	F			L					Young tree, imbalance form	TS0003C
638	Bauhinia variegata	宮粉羊蹄甲	HyD	3.5	2.5	0.08	L	P	F			L					Imbalance form, tree bark damaged	TS0003C
639	Eucalyptus torelliana	毛葉桉	HyD	4.5	3.0	0.09	L	P	F			L					Young tree, slanting	TS0003C
640	Melaleuca leucadendron	白千層	HyD	6.0	2.0	0.08	L	F	F		M						Young tree, crook	TS0003C
641	Eucalyptus torelliana	毛葉桉	HyD	7.0	2.5	0.07	L	P	F			L					Young tree, imbalance form	TS0003C
642	Eucalyptus torelliana	毛葉桉	HyD	6.0	2.5	0.06	L	P	F			L					Young tree, exposed root, forked trunk	TS0003C
643	Eucalyptus torelliana	毛葉桉	HyD	5.0	3.0	0.07	L	P	P			L					Young tree, slanting seriously	TS0003C
644	Lagerstroemia speciosa	大花紫薇	HyD	3.5	2.5	0.06	L	P	P			L					Young tree, tree bark damaged, affected by insects	TS0003C
645	Eucalyptus torelliana	毛葉桉	HyD	7.0	3.5	0.1	L	F	F			L					Forked trunk	TS0003C
646	Lagerstroemia speciosa	大花紫薇	HyD	3.5	2.5	0.06	L	P	F			L					Young tree, imbalance form	TS0003C
647	Bauhinia variegata	宮粉羊蹄甲	HyD	4.5	3.5	0.06	L	P	F			L					Young tree, multi trunk, leading shoot damaged	TS0003C
648	Leucaena leucocephala	銀合歡	HyD	9.0	7.0	0.38	L	P	P			L					Already felled, only tree stump left on site	TS0004A
649	Leucaena leucocephala	銀合歡	HyD	10.0	6.0	0.29	L	P	F			L					Multi-trunk, leaning, imbalanced crown, damaged bark	TS0004A
650	Leucaena leucocephala	銀合歡	HyD	10.0	6.0	0.19	L	P	F			L					Leaning, imbalanced crown, damaged bark, broken branches	TS0004A

(Improvement to Pok Oi Interchange)
Tree Assessment Schedule

Drawing No. HSDWU2518-TS0001B-TS0004A

Tree no.	Tree Species (Botanical name)	Chinese Name (Hong Kong)	Tree Maintenance Dept.	Tree Size			Amenity Value	Form	Health	Survival Rate after Transplanting			Recommendation				Remarks ²	Ref Drawing
				Height	Average crown spread	Trunk ¹ (diameter)				High	Medium	Low	Transplant	Retain	Fell	Pruning		
				(m)	(m)	(m)	High Medium Low	Good Fair Poor	Good Fair Poor	High Medium Low								
651	Bauhinia variegata	宮粉羊蹄甲	HyD	4.0	2.5	0.09	L	G	G		M						Young tree	TS0001B
652	Bauhinia variegata	宮粉羊蹄甲	HyD	4.0	3.0	0.12	L	G	G		M						Young tree with a few cut branches	TS0001B
653	Acacia auriculiformis	耳果相思	HyD	5.5	5.0	0.12	L	F	F			L					A few branches torn off from the trunk	TS0001B
654	Bauhinia variegata	宮粉羊蹄甲	HyD	4.5	3.5	0.11	L	G	G		M						Young tree	TS0001B
655	Ficus hispida	對葉榕	HyD	3.0	2.5	0.07	L	F	G		M						Young tree with leaning trunk	TS0001B
656	Bauhinia variegata	宮粉羊蹄甲	HyD	4.0	4.0	0.13	L	G	G		M						Young tree	TS0001B
657	Bauhinia variegata	宮粉羊蹄甲	HyD	4.0	2.5	0.07	L	G	G		M						Young tree	TS0001B
658	Leucaena leucocephala	銀合歡	HyD	5.0	3.5	0.11	L	F	F				L				Multi-trunk, imbalanced crown	TS0001B
659	Ficus hispida	對葉榕	HyD	4.0	3.0	0.07	L	F	F		M						Young tree with crooked trunk, imbalanced crown, broken branches	TS0001B
660	Ficus hispida	對葉榕	HyD	3.0	3.0	0.1	L	F	G		M						Multi-trunk	TS0001B
661	Bauhinia variegata	宮粉羊蹄甲	HyD	4.0	2.5	0.07	L	F	G		M						Young tree with twin-trunk	TS0001B
662	Ficus hispida	對葉榕	HyD	4.0	3.0	0.08	L	G	G		M						Young tree	TS0001B
663	Celtis sinensis	朴樹	HyD	4.0	2.5	0.1	L	F	G		M						Young tree with V-shaped trunk	TS0001B
664	Bauhinia variegata	宮粉羊蹄甲	HyD	3.0	2.0	0.06	L	F	G		M						Young tree with multi-trunk	TS0001B
665	Bauhinia purpurea	紅花羊蹄甲	HyD	5.0	3.0	0.07	L	P	P				L				Collapsed with root exposed	TS0001B
666	Bombax ceiba	木棉	HyD	4.5	2.5	0.1	L	G	G		M						Young tree	TS0001B
667	Celtis sinensis	朴樹	HyD	4.0	2.5	0.08	L	F	G		M						Young tree with crooked trunk	TS0001B
668	Celtis sinensis	朴樹	HyD	4.0	3.5	0.08	L	F	G		M						Young tree with crooked trunk	TS0001B
669	Ficus hispida	對葉榕	HyD	3.0	3.5	0.08	L	F	G		M						Young tree with multi-trunk	TS0001B
670	Ficus hispida	對葉榕	HyD	3.0	3.5	0.08	L	F	G		M						Young tree with multi-trunk	TS0001B
671	Bauhinia variegata	宮粉羊蹄甲	HyD	3.0	2.5	0.09	L	P	F				L				Serious leaning, imbalanced crown	TS0001B
672	Bauhinia variegata	宮粉羊蹄甲	HyD	4.0	2.5	0.08	L	G	G		M						Young tree	TS0001B
673	Bauhinia variegata	宮粉羊蹄甲	HyD	3.5	3.5	0.09	L	F	G		M						Young tree with twin-trunk	TS0001B
674	Bauhinia variegata	宮粉羊蹄甲	HyD	4.5	4.0	0.09	L	G	G		M						Young tree	TS0001B
675	Bauhinia variegata	宮粉羊蹄甲	HyD	5.0	4.0	0.12	L	G	G		M						Young tree	TS0001B
676	Ficus hispida	對葉榕	HyD	3.5	3.0	0.09	L	F	G		M						Young tree with multi-trunk	TS0001B
677	Callistemon viminalis	串錢柳	HyD	5.0	3.0	0.13	L	F	F		M						Multi-trunk, broken branches, sparse foliage	TS0001B
678	Callistemon viminalis	串錢柳	HyD	3.5	2.5	0.1	L	F	F		M						Leaning, multi-trunk, broken branches, sparse foliage	TS0001B
679	Callistemon viminalis	串錢柳	HyD	3.5	2.5	0.11	L	F	F		M						Multi-trunk, broken branches, sparse foliage	TS0001B
680	Callistemon viminalis	串錢柳	HyD	3.5	2.5	0.07	L	F	F		M						Leaning, multi-trunk, broken branches, sparse foliage	TS0001B
681	Acacia confusa	台灣相思	HyD	6.0	3.5	0.1	L	P	F				L				Leaning, multi-trunk, broken branches, imbalanced crown	TS0001B
682	Acacia confusa	台灣相思	HyD	8.0	4.0	0.16	L	P	F				L				Multi-trunk with several no. topped, damaged bark	TS0001B
683	Callistemon viminalis	串錢柳	HyD	5.0	3.5	0.13	L	F	F		M						Multi-trunk, broken branches, sparse foliage	TS0001B
684	Cinnamomum camphora	樟樹	HyD	4.0	2.5	0.08	L	P	P				L				Suppressed, many branches died back & broken	TS0001B
685	Leucaena leucocephala	銀合歡	HyD	8.0	5.0	0.22	L	F	F				L				Broken branches, imbalanced crown	TS0001B
686	Acacia confusa	台灣相思	HyD	9.0	5.0	0.14	L	P	F				L				Multi-trunk with some topped or broken, imbalanced crown	TS0001B
687	Acacia confusa	台灣相思	HyD	8.0	5.0	0.16	L	P	F				L				Multi-trunk with some topped or broken, imbalanced crown	TS0001B
688	Acacia confusa	台灣相思	HyD	9.0	5.0	0.13	L	P	F				L				Multi-trunk with some topped or broken, imbalanced crown	TS0001B
689	Acacia confusa	台灣相思	HyD	8.0	5.0	0.19	L	P	F				L				Multi-trunk with some topped or broken, imbalanced crown	TS0001B

(Improvement to Pok Oi Interchange)
Tree Assessment Schedule

Drawing No. HSDWU2518-TS0001B-TS0004A

Tree no.	Tree Species (Botanical name)	Chinese Name (Hong Kong)	Tree Maintenance Dept.	Tree Size			Amenity Value	Form	Health	Survial Rate after Transplanting			Recommendation				Remarks ²	Ref Drawing
				Height	Average crown spread	Trunk ¹ (diameter)				High	Medium	Low	Transplant	Retain	Fell	Pruning		
				(m)	(m)	(m)	Low	Fair	Poor									
690	Acacia confusa	台灣相思	HyD	9.0	4.0	0.24	L	P	F			L					Multi-trunk with some topped or broken, imbalanced crown	TS0001B
691	Acacia confusa	台灣相思	HyD	9.0	5.0	0.25	L	P	F			L					Multi-trunk with some topped or broken, imbalanced crown	TS0001B
692	Acacia confusa	台灣相思	HyD	9.0	4.0	0.14	L	P	F			L					Multi-trunk with some topped or broken, imbalanced crown	TS0001B
693	Acacia confusa	台灣相思	HyD	9.0	5.0	0.16	L	P	F			L					Multi-trunk with some topped or broken, imbalanced crown	TS0001B
694	Acacia confusa	台灣相思	HyD	9.0	4.0	0.18	L	P	F			L					Multi-trunk with some topped or broken, imbalanced crown	TS0001B
695	Eucalyptus exserta	窿緣桉	HyD	11.0	7.0	0.35	L	F	F			L					Broken branches, imbalanced crown, bark infested with termites	TS0001B
696	Eucalyptus exserta	窿緣桉	HyD	9.0	5.0	0.25	L	F	F			L					Broken branches, imbalanced crown, bark infested with termites	TS0001B
697	Bauhinia variegata	宮粉羊蹄甲	HyD	4.0	3.5	0.07	L	G	G			M					Young tree	TS0002C
698	Celtis sinensis	朴樹	HyD	3.5	3.0	0.1	L	F	G			M					Young tree with V-shaped trunk	TS0002C
699	Celtis sinensis	朴樹	HyD	3.5	2.5	0.08	L	F	G			M					Young tree with crooked trunk	TS0002C
700	Celtis sinensis	朴樹	HyD	4.0	2.5	0.08	L	F	G			M					Young tree with crooked trunk	TS0002C
701	Phyllanthus emblica	餘甘子	HyD	3.5	2.5	0.07	L	F	F			M					Died back branches, imbalanced crown	TS0002C
702	Phyllanthus emblica	餘甘子	HyD	3.5	3.0	0.07	L	F	F			M					Died back branches, imbalanced crown	TS0002C
703	Celtis sinensis	朴樹	HyD	5.0	4.0	0.1	L	G	G			M					Young tree	TS0002C
704	Celtis sinensis	朴樹	HyD	5.0	2.5	0.08	L	F	G			M					Young tree with imbalanced crown	TS0002C
705	Celtis sinensis	朴樹	HyD	5.0	3.5	0.11	L	F	G			M					Young tree with imbalanced crown	TS0002C
706	Celtis sinensis	朴樹	HyD	5.0	3.0	0.12	L	F	G			M					Young tree with imbalanced crown	TS0002C
707	Celtis sinensis	朴樹	HyD	5.0	3.0	0.11	L	F	G			M					Young tree with imbalanced crown	TS0002C
708	Bauhinia variegata	宮粉羊蹄甲	HyD	5.0	4.0	0.09	L	F	G			M					Young tree with imbalanced crown	TS0002C
709	Sapium discolor	山烏桕	HyD	4.5	2.5	0.12	L	P	P			L					Leaning, many branches died back & broken	TS0002C
710	Celtis sinensis	朴樹	HyD	5.0	3.0	0.08	L	F	G			M					Young tree with imbalanced crown	TS0002C
711	Celtis sinensis	朴樹	HyD	5.5	4.0	0.16	L	F	F			L					Exposed roots, died back branches	TS0002C
712	Celtis sinensis	朴樹	HyD	6.0	4.0	0.17	L	F	F			L					Exposed roots, died back branches	TS0002C
713	Celtis sinensis	朴樹	HyD	5.0	3.5	0.14	L	G	G			M					Young tree	TS0002C
714	Bauhinia variegata	宮粉羊蹄甲	HyD	4.5	3.5	0.07	L	F	G			M					Young tree with multi-trunk	TS0002C
715	Bauhinia variegata	宮粉羊蹄甲	HyD	4.0	2.5	0.06	L	F	G			M					Young tree with multi-trunk	TS0002C
716	Sapium discolor	山烏桕	HyD	5.5	3.5	0.1	L	F	F			L					Crooked trunk, died back branches, imbalanced crown	TS0002C
717	Celtis sinensis	朴樹	HyD	6.0	4.0	0.13	L	F	G			M					Young tree with crooked trunk	TS0002C
718	Celtis sinensis	朴樹	HyD	6.0	4.0	0.22	L	F	G			M					Young tree with crooked trunk	TS0002C
719	Celtis sinensis	朴樹	HyD	6.0	3.0	0.1	L	F	G			M					Young tree with crooked trunk	TS0002C
720	Celtis sinensis	朴樹	HyD	6.0	3.5	0.14	L	F	G			M					Young tree with crooked trunk	TS0002C
721	Celtis sinensis	朴樹	HyD	6.0	2.5	0.1	L	F	G			M					Young tree with crooked trunk	TS0002C
722	Sapium discolor	山烏桕	HyD	6.0	4.0	0.1	L	F	G			M					Leaning trunk	TS0002C
723	Celtis sinensis	朴樹	HyD	6.0	4.5	0.15	L	F	G			M					Forked trunk, topped branches	TS0002C
724	Celtis sinensis	朴樹	HyD	6.0	3.5	0.15	L	F	G			M					Forked trunk, topped branches	TS0002C
725	Celtis sinensis	朴樹	HyD	6.0	3.0	0.08	L	F	G			M					Young tree with crooked trunk	TS0002C
726	Celtis sinensis	朴樹	HyD	6.0	4.5	0.13	L	F	G			M					Multi-trunk	TS0002C
727	Schima superba	木荷	HyD	4.0	2.5	0.08	L	F	G			M					Crooked trunk, imbalanced crown	TS0002C
728	Leucaena leucocephala	銀合歡	HyD	6.5	3.5	0.11	L	F	G			L					Crooked trunk, imbalanced crown	TS0002C

(Improvement to Pok Oi Interchange)
Tree Assessment Schedule

Drawing No. HSDWU2518-TS0001B-TS0004A

Tree no.	Tree Species (Botanical name)	Chinese Name (Hong Kong)	Tree Maintenance Dept.	Tree Size			Amenity Value	Form	Health	Survial Rate after Transplanting			Recommendation				Remarks ²	Ref Drawing
				Height	Average crown spread	Trunk ¹ (diameter)				High	Medium	Low	Transplant	Retain	Fell	Pruning		
				(m)	(m)	(m)	High Medium Low	Good Fair Poor	Good Fair Poor	High Medium Low								
729	Leucaena leucocephala	銀合歡	HyD	7.0	4.5	0.19	L	F	F			L					Forked trunk, broken branches	TS0002C
730	Leucaena leucocephala	銀合歡	HyD	6.5	3.5	0.13	L	P	F			L					Serious leaning, broken branches	TS0002C
731	Leucaena leucocephala	銀合歡	HyD	7.5	3.5	0.15	L	P	F			L					Serious leaning, broken branches	TS0002C
732	Leucaena leucocephala	銀合歡	HyD	7.0	3.0	0.1	L	F	F			L					Broken branches, imbalanced crown	TS0002C
733	Leucaena leucocephala	銀合歡	HyD	4.5	3.5	0.11	L	P	F			L					Serious leaning, imbalanced crown	TS0002C
734	Celtis sinensis	朴樹	HyD	4.0	3.0	0.08	L	P	P			L					Young tree, crook, imbalanced crown	TS0002C
735	Celtis sinensis	朴樹	HyD	5.0	3.5	0.13	L	F	F			M					Forked trunk	TS0002C
736	Sapium discolor	山烏桕	HyD	4.0	3.5	0.09	L	F	F			M					Crooked trunk, imbalanced crown	TS0002C
737	Celtis sinensis	朴樹	HyD	4.5	3.5	0.08	L	F	F			M					Imbalanced crown	TS0002C
738	Phyllanthus emblica	餘甘子	HyD	3.5	3.0	0.11	L	F	F			M					Forked trunk	TS0002C
739	Celtis sinensis	朴樹	HyD	5.0	3.5	0.09	L	P	F			L					Young tree, exposed root, slanting	TS0002C
740	Liquidambar formosana	楓香	HyD	4.0	3.0	0.08	L	F	F			M					Young tree, crook	TS0002C
741	Liquidambar formosana	楓香	HyD	5.0	2.5	0.08	L	F	F			M					Young tree	TS0002C
742	Sapium discolor	山烏桕	HyD	4.5	3.0	0.09	L	F	F			M					Young tree, forked trunk	TS0002C
743	Phyllanthus emblica	餘甘子	HyD	3.5	2.5	0.08	L	P	F			L					Young tree, leading branch damaged	TS0002C
744	Phyllanthus emblica	餘甘子	HyD	4.0	2.5	0.08	L	P	F			L					Young tree, forked trunk, bark damaged	TS0002C
745	Phyllanthus emblica	餘甘子	HyD	3.5	2.0	0.07	L	P	F			L					Young tree, leading branch damaged	TS0002C
746	Phyllanthus emblica	餘甘子	HyD	3.5	2.5	0.08	L	F	F			M					Young tree, multi-trunk	TS0002C
747	Sapium discolor	山烏桕	HyD	4.0	2.5	0.08	L	P	F			L					Young tree, crooked trunk, imbalanced crown	TS0002C
748	Celtis sinensis	朴樹	HyD	5.0	4.0	0.15	L	F	F			M					Forked trunk, crook	TS0002C
749	Liquidambar formosana	楓香	HyD	5.5	3.0	0.08	L	P	F			M					Young tree	TS0002C
750	Celtis sinensis	朴樹	HyD	5.0	2.5	0.07	L	F	F			M					Young tree, forked trunk	TS0002C
751	Celtis sinensis	朴樹	HyD	6.0	2.5	0.07	L	P	F			L					Young tree, imbalanced crown	TS0002C
752	Liquidambar formosana	楓香	HyD	6.0	4.0	0.11	L	F	F			M					Multi-trunk	TS0002C
753	Celtis sinensis	朴樹	HyD	6.0	3.0	0.12	L	F	F			M					Forked trunk	TS0002C
754	Celtis sinensis	朴樹	HyD	6.0	3.0	0.1	L	F	F			M					Crooked trunk, imbalanced crown	TS0002C
755	Celtis sinensis	朴樹	HyD	5.0	2.5	0.1	L	F	F			M					Exposed root, slanting	TS0002C
756	Sapium discolor	山烏桕	HyD	3.5	2.5	0.07	L	P	F			L					Slanting, imbalanced crown	TS0002C
757	Celtis sinensis	朴樹	HyD	5.0	3.5	0.13	L	P	F			L					Multi-trunk, imbalanced crown	TS0002C
758	Phyllanthus emblica	餘甘子	HyD	4.0	2.5	0.09	L	P	F			L					Multi stem leading branch broken	TS0002C
759	Sapium discolor	山烏桕	HyD	3.5	2.5	0.07	L	P	F			L					slanting, imbalanced crown	TS0002C
760	Phyllanthus emblica	餘甘子	HyD	4.0	2.5	0.11	L	P	F			L					Multi-trunk, crossing branches, imbalanced crown	TS0002C
761	Celtis sinensis	朴樹	HyD	4.5	2.5	0.08	L	F	F			M					Young tree, exposed root, crook	TS0002C
762	Celtis sinensis	朴樹	HyD	4.5	3.0	0.12	L	P	F			L					Exposed root, crook, growing near to concrete block	TS0002C
763	Celtis sinensis	朴樹	HyD	5.5	3.5	0.1	L	F	F			M					Multi-trunk	TS0002C
764	Celtis sinensis	朴樹	HyD	5.0	2.5	0.08	L	F	F			M					Young tree, multi-trunk	TS0002C
765	Litsea glutinosa	潺槁	HyD	5.0	2.5	0.09	L	F	F			M					Young tree with narrow crown	TS0002C
766	Celtis sinensis	朴樹	HyD	6.0	4.0	0.15	L	P	F			L					Exposed root, multi-trunk. Crook, close to T767	TS0002C
767	Liquidambar formosana	楓香	HyD	6.5	3.5	0.11	L	P	F			L					Multi-trunk, close to T766	TS0002C

(Improvement to Pok Oi Interchange)
Tree Assessment Schedule

Drawing No. HSDWU2518-TS0001B-TS0004A

Tree no.	Tree Species (Botanical name)	Chinese Name (Hong Kong)	Tree Maintenance Dept.	Tree Size			Amenity Value	Form	Health	Survial Rate after Transplanting			Recommendation				Remarks ²	Ref Drawing
				Height	Average crown spread	Trunk ¹ (diameter)				High	Medium	Low	Transplant	Retain	Fell	Pruning		
				(m)	(m)	(m)	Low	Fair	Poor									
768	Litsea glutinosa	潺槁	HyD	6.0	3.5	0.11	L	F	F		M						Young tree	TS0002C
769	Celtis sinensis	朴樹	HyD	4.5	2.5	0.1	L	P	P			L					Exposed root, multi-trunk, close to T771	TS0002C
770	Celtis sinensis	朴樹	HyD	5.0	3.5	0.14	L	P	P			L					Exposed root, multi-trunk	TS0002C
771	Celtis sinensis	朴樹	HyD	5.5	2.5	0.08	L	P	F			L					Young tree, low branches, close to T769	TS0002C
772	Phyllanthus emblica	餘甘子	HyD	5.0	3.5	0.13	L	P	F		M						Forked trunk	TS0002C
773	Liquidambar formosana	楓香	HyD	5.0	3.0	0.07	L	P	P			L					Young tree, crook	TS0002C
774	Sapium discolor	山烏桕	HyD	4.5	3.0	0.13	L	P	F			L					Imbalanced crown, tree bark damaged, close to T769	TS0002C
775	Celtis sinensis	朴樹	HyD	3.5	2.5	0.08	L	F	F		M						Young tree, crooked trunk	TS0002C
776	Phyllanthus emblica	餘甘子	HyD	3.5	2.5	0.1	L	F	F		M						Multi-trunk	TS0002C
777	Phyllanthus emblica	餘甘子	HyD	3.5	2.5	0.08	L	P	F			L					Young tree, crooked trunk, forked crown	TS0002C
778	Phyllanthus emblica	餘甘子	HyD	4.0	2.5	0.1	L	P	P			L					Imbalanced crown, close to T777	TS0002C
779	Celtis sinensis	朴樹	HyD	5.0	4.0	0.2	L	F	F		M						Forked trunk, slanting	TS0002C
780	Celtis sinensis	朴樹	HyD	4.0	2.5	0.08	L	P	F			L					Young tree, crooked trunk, forked crown	TS0002C
781	Celtis sinensis	朴樹	HyD	4.0	2.5	0.08	L	F	F		M						Young tree, crooked trunk	TS0002C
782	Liquidambar formosana	楓香	HyD	5.0	2.5	0.1	L	F	F		M						Multi-trunk, crook	TS0002C
783	Celtis sinensis	朴樹	HyD	4.5	2.5	0.11	L	P	F			L					Exposed root,	TS0002C
784	Litsea glutinosa	潺槁	HyD	4.0	3.0	0.08	L	P	F			L					Young tree, forked trunk, slanting	TS0002C
785	Liquidambar formosana	楓香	HyD	5.0	3.5	0.11	L	F	F		M						Multi-trunk	TS0002C
786	Liquidambar formosana	楓香	HyD	5.0	2.5	0.1	L	P	F			L					Crooked trunk, slanting	TS0002C
787	Celtis sinensis	朴樹	HyD	5.0	3.0	0.1	L	F	F		M						Multi-trunk	TS0002C
788	Celtis sinensis	朴樹	HyD	4.5	3.0	0.08	L	F	F		M						Young tree, multi-trunk	TS0002C
789	Celtis sinensis	朴樹	HyD	4.0	2.5	0.1	L	F	F		M						Young tree, multi-trunk	TS0002C
790	Celtis sinensis	朴樹	HyD	5.0	2.5	0.09	L	F	F		M						Young tree, multi-trunk	TS0002C
791	Phyllanthus emblica	餘甘子	HyD	3.5	2.5	0.12	L	P	F			L					Multi-trunk	TS0002C
792	Celtis sinensis	朴樹	HyD	5.0	3.0	0.09	L	F	F		M						Young tree, multi-trunk	TS0002C
793	Litsea glutinosa	潺槁	HyD	3.5	2.5	0.12	L	P	P			L					Forked-trunk, multi-trunk	TS0002C
794	Litsea glutinosa	潺槁	HyD	5.0	2.5	0.09	L	F	F		M						Young tree, forked trunk, slanting	TS0002C
795	Celtis sinensis	朴樹	HyD	4.5	2.5	0.08	L	F	F		M						Young tree, forked trunk	TS0002C
796	Leucaena leucocephala	銀合歡	HyD	9.0	5.0	0.18	L	P	P			L					Slanting	TS0002C
797	Leucaena leucocephala	銀合歡	HyD	9.0	5.0	0.23	L	P	P			L					Forked-trunk, growing at edge of concrete kerb	TS0002C
798	Leucaena leucocephala	銀合歡	HyD	9.0	4.5	0.19	L	P	P			L					Forked-trunk, growing at edge of concrete kerb	TS0002C
799	Leucaena leucocephala	銀合歡	HyD	9.0	4.5	0.16	L	P	P			L					Slanting, growing at edge of building	TS0002C
800	Leucaena leucocephala	銀合歡	HyD	9.0	3.5	0.17	L	P	P			L					Slanting, growing at edge of concrete kerb	TS0002C
801	Leucaena leucocephala	銀合歡	HyD	9.0	5.0	0.17	L	P	P			L					Slanting	TS0002C
802	Leucaena leucocephala	銀合歡	HyD	9.0	4.5	0.17	L	P	P			L					Growing at edge of structure	TS0002C
803	Leucaena leucocephala	銀合歡	HyD	8.5	3.5	0.16	L	P	P			L					Growing at edge of structure	TS0002C
804	Bombax ceiba	木棉	HyD	9.0	4.5	0.2	L	F	F		M						Growing near edge of structure	TS0002C
805	Leucaena leucocephala	銀合歡	HyD	9.0	5.0	0.25	L	P	P			L					Forked-trunk, slanting, growing at edge of kerb	TS0002C
806	Celtis sinensis	朴樹	HyD	3.5	3.0	0.1	L	P	F			L					Without leading branch	TS0002C

(Improvement to Pok Oi Interchange)
Tree Assessment Schedule

Drawing No. HSDWU2518-TS0001B-TS0004A

Tree no.	Tree Species (Botanical name)	Chinese Name (Hong Kong)	Tree Maintenance Dept.	Tree Size			Amenity Value	Form	Health	Survial Rate after Transplanting			Recommendation				Remarks ²	Ref Drawing
				Height	Average crown spread	Trunk ¹ (diameter)				High	Medium	Low	Transplant	Retain	Fell	Pruning		
				(m)	(m)	(m)	High Medium Low	Good Fair Poor	Good Fair Poor	High Medium Low								
807	Celtis sinensis	朴樹	HyD	4.5	3.5	0.17	L	F	F		M						Multi-trunk	TS0002C
808	Celtis sinensis	朴樹	HyD	5.0	2.5	0.11	L	F	F		M						Crooked trunk	TS0002C
809	Celtis sinensis	朴樹	HyD	5.0	3.5	0.12	L	F	F		M						Crooked trunk, multi-trunk	TS0002C
810	Leucaena leucocephala	銀合歡	HyD	9.0	5.0	0.22	L	P	P			L					Slanting, growing at edge of culvert	TS0002C
811	Liquidambar formosana	楓香	HyD	4.5	3.0	0.09	L	F	F		M						Multi-trunk, slanting	TS0002C
812	Bauhinia variegata	宮粉羊蹄甲	HyD	8.0	3.5	0.13	L	F	F		M						Forked-trunk	TS0002C
813	Celtis sinensis	朴樹	HyD	5.0	3.0	0.09	L	F	F		M						Multi-trunk, crook	TS0002C
814	Celtis sinensis	朴樹	HyD	5.0	3.0	0.1	L	F	F		M						Multi-trunk, crook	TS0002C
815	Celtis sinensis	朴樹	HyD	5.0	3.0	0.09	L	F	F		M						Multi-trunk, crook	TS0002C
816	Bauhinia variegata	宮粉羊蹄甲	HyD	7.0	3.0	0.13	L	P	F			L					Multi-trunk, forked trunk	TS0002C
817	Leucaena leucocephala	銀合歡	HyD	8.0	3.5	0.17	L	P	P			L					Slanting	TS0002C
818	Leucaena leucocephala	銀合歡	HyD	11.0	6.0	0.18	L	P	P			L					Forked-trunk, growing at edge of culvert	TS0002C
819	Bauhinia variegata	宮粉羊蹄甲	HyD	4.5	3.0	0.08	L	F	F		M						Young tree, multi-trunk	TS0002C
820	Celtis sinensis	朴樹	HyD	4.0	2.0	0.07	L	F	F		M						Young tree, forked-trunk	TS0002C
821	Leucaena leucocephala	銀合歡	HyD	3.0	2.0	0.18	L	P	P			L					Leading branch broken	TS0002C
822	Celtis sinensis	朴樹	HyD	4.0	3.0	0.07	L	P	F			L					Slanting, exposed root	TS0002C
823	Phyllanthus emblica	餘甘子	HyD	5.0	3.0	0.11	L	F	F		M						Forked-trunk	TS0002C
824	Phyllanthus emblica	餘甘子	HyD	5.0	3.0	0.08	L	F	F		M						Forked-trunk	TS0002C
825	Celtis sinensis	朴樹	HyD	5.0	3.0	0.07	L	P	F			L					Crooked trunk, multi-trunk	TS0002C
826	Celtis sinensis	朴樹	HyD	5.0	3.0	0.08	L	F	F		M						Young tree, multi-trunk	TS0002C
827	Liquidambar formosana	楓香	HyD	5.0	3.0	0.07	L	F	F		M						Young tree, multi-trunk	TS0002C
828	Liquidambar formosana	楓香	HyD	6.0	3.0	0.1	L	P	F			L					Crooked trunk, slanting	TS0002C
829	Litsea glutinosa	潺槁	HyD	4.5	2.5	0.07	L	P	F			L					Young tree, forked-trunk	TS0002C
830	Liquidambar formosana	楓香	HyD	5.0	3.0	0.11	L	F	F		M						Multi-trunk	TS0002C
831	Liquidambar formosana	楓香	HyD	5.0	2.5	0.12	L	F	F		M						Multi-trunk	TS0002C
832	Litsea glutinosa	潺槁	HyD	5.0	3.0	0.09	L	F	F		M						Forked-trunk	TS0002C
833	Celtis sinensis	朴樹	HyD	5.0	3.5	0.14	L	F	F		M						Forked-trunk	TS0002C
834	Celtis sinensis	朴樹	HyD	5.0	3.5	0.13	L	P	F			L					Growing at edge of kerb	TS0002C
835	Celtis sinensis	朴樹	HyD	4.5	3.5	0.16	L	P	F			L					Growing at edge of kerb	TS0002C
836	Phyllanthus emblica	餘甘子	HyD	4.0	2.5	0.07	L	F	F		M						Young tree	TS0002C
837	Ficus hispida	對葉榕	HyD	4.0	2.5	0.07	L	F	F		M						Young tree	TS0002C
838	Liquidambar formosana	楓香	HyD	4.5	2.5	0.1	L	F	F		M						Young tree	TS0002C
839	Liquidambar formosana	楓香	HyD	5.0	3.0	0.12	L	F	F		M						Multi-trunk	TS0002C
840	Bombax ceiba	木棉	HyD	5.5	3.5	0.15	L	P	P			L					Growing beside kerb	TS0002C
841	Liquidambar formosana	楓香	HyD	6.0	3.5	0.11	L	P	P			L					Growing beside kerb	TS0002C
842	Liquidambar formosana	楓香	HyD	6.0	2.5	0.09	L	P	F			L					Multi-trunk	TS0002C
843	Liquidambar formosana	楓香	HyD	4.5	2.5	0.08	L	P	F		M						Young tree	TS0002C
844	Phyllanthus emblica	餘甘子	HyD	5.0	3.0	0.12	L	P	F			L					Grwoing close to T845	TS0002C
845	Phyllanthus emblica	餘甘子	HyD	5.0	3.5	0.11	L	P	F			L					Growing close to T844	TS0002C

(Improvement to Pok Oi Interchange)
Tree Assessment Schedule

Drawing No. HSDWU2518-TS0001B-TS0004A

Tree no.	Tree Species (Botanical name)	Chinese Name (Hong Kong)	Tree Maintenance Dept.	Tree Size			Amenity Value	Form	Health	Survial Rate after Transplanting			Recommendation				Remarks ²	Ref Drawing
				Height	Average crown spread	Trunk ¹ (diameter)				High	Medium	Low	Transplant	Retain	Fell	Pruning		
				(m)	(m)	(m)	High Medium Low	Good Fair Poor	Good Fair Poor	High Medium Low								
846	Celtis sinensis	朴樹	HyD	4.5	2.5	0.08	L	F	F		M						Young tree	TS0002C
847	Liquidambar formosana	楓香	HyD	4.5	2.5	0.07	L	F	F		M						Young tree	TS0002C
848	Phyllanthus emblica	餘甘子	HyD	4.0	2.5	0.09	L	P	P			L					Tree bark damaged	TS0002C
849	Celtis sinensis	朴樹	HyD	4.0	2.5	0.08	L	F	F		M						Young tree	TS0002C
850	Liquidambar formosana	楓香	HyD	6.0	3.0	0.1	L	F	F		M						Multi-trunk	TS0002C
851	Leucaena leucocephala	銀合歡	HyD	5.5	3.5	0.08	L	P	P			L					Forked-trunk	TS0002C
852	Litsea glutinosa	潺槁	HyD	5.0	3.0	0.08	L	P	F			L					Young tree, forked trunk	TS0002C
853	Phyllanthus emblica	餘甘子	HyD	4.0	3.0	0.1	L	F	F		M						Multi-trunk	TS0002C
854	Phyllanthus emblica	餘甘子	HyD	4.0	3.0	0.09	L	F	F		M						Young tree	TS0002C
855	Liquidambar formosana	楓香	HyD	5.0	3.0	0.08	L	F	F		M						Young tree	TS0002C
856	Phyllanthus emblica	餘甘子	HyD	2.5	2.5	0.08	L	F	F		M						Young tree	TS0002C
857	Phyllanthus emblica	餘甘子	HyD	4.5	3.0	0.07	L	F	F		M						Young tree	TS0002C
858	Celtis sinensis	朴樹	HyD	4.5	3.0	0.09	L	F	F		M						Young tree	TS0002C
859	Celtis sinensis	朴樹	HyD	4.0	2.5	0.1	L	P	F		M						Growing close to T860	TS0002C
860	Celtis sinensis	朴樹	HyD	4.0	3.0	0.1	L	P	F		M						Growing close to T859	TS0002C
861	Celtis sinensis	朴樹	HyD	4.5	3.0	0.08	L	F	F		M						Young tree	TS0002C
862	Phyllanthus emblica	餘甘子	HyD	4.5	3.0	0.1	L	F	F		M						Multi-trunk	TS0002C
863	Liquidambar formosana	楓香	HyD	5.0	3.0	0.16	L	F	F		M						Multi-trunk, slanting	TS0002C
864	Acacia auriculiformis	耳果相思	HyD	9.0	4.5	0.22	L	P	F			L					Growing on kerb of structure	TS0002C
865	Celtis sinensis	朴樹	HyD	4.5	3.5	0.12	L	F	F		M						Multi-trunk	TS0002C
866	Phyllanthus emblica	餘甘子	HyD	5.0	3.5	0.12	L	F	F		M						Multi-trunk	TS0002C
867	Celtis sinensis	朴樹	HyD	3.5	3.0	0.11	L	P	F			L					Forked-trunk, slanting	TS0002C
868	Phyllanthus emblica	餘甘子	HyD	4.0	3.5	0.11	L	F	F		M						Forked-trunk	TS0002C
869	Phyllanthus emblica	餘甘子	HyD	5.0	4.0	0.15	L	P	F			L					Forked-trunk, tree bark damaged	TS0002C
870	Liquidambar formosana	楓香	HyD	4.5	3.5	0.12	L	F	F		M						Crook, imbalanced trunk	TS0002C
871	Liquidambar formosana	楓香	HyD	6.0	3.5	0.11	L	F	F		M						Multi-trunk	TS0002C
872	Liquidambar formosana	楓香	HyD	5.0	3.5	0.1	L	F	F		M						Multi-trunk	TS0002C
873	Phyllanthus emblica	餘甘子	HyD	4.0	3.0	0.08	L	F	F		M						Young tree	TS0002C
874	Celtis sinensis	朴樹	HyD	5.0	3.5	0.08	L	P	F			L					Young tree, close to T875	TS0002C
875	Celtis sinensis	朴樹	HyD	5.0	3.5	0.09	L	P	F			L					Young tree, close to T874	TS0002C
876	Litsea glutinosa	潺槁	HyD	4.5	3.5	0.11	L	P	F			L					Growing at edge of culvert	TS0002C
877	Liquidambar formosana	楓香	HyD	5.0	3.5	0.1	L	F	F		M						Young tree	TS0002C
878	Celtis sinensis	朴樹	HyD	3.5	2.5	0.08	L	F	F		M						Young tree	TS0002C
879	Celtis sinensis	朴樹	HyD	3.5	2.5	0.08	L	F	F		M						Young tree, slanting	TS0002C
880	Litsea glutinosa	潺槁	HyD	4.0	3.0	0.08	L	F	F		M						Young tree	TS0002C
881	Celtis sinensis	朴樹	HyD	5.0	3.5	0.11	L	F	F		M						Imbalanced from	TS0002C
882	Phyllanthus emblica	餘甘子	HyD	4.0	3.0	0.12	L	F	F		M						Forked-trunk	TS0002C
883	Macaranga tanarius	血桐	HyD	4.0	4.0	0.1	L	F	F		M						Multi-trunk	TS0002C
884	Macaranga tanarius	血桐	HyD	6.0	8.0	0.25	L	F	P			L					Growing near footing of Highway, exposed root	TS0002C

(Improvement to Pok Oi Interchange)
Tree Assessment Schedule

Drawing No. HSDWU2518-TS0001B-TS0004A

Tree no.	Tree Species (Botanical name)	Chinese Name (Hong Kong)	Tree Maintenance Dept.	Tree Size			Amenity Value	Form	Health	Survial Rate after Transplanting			Recommendation				Remarks ²	Ref Drawing
				Height	Average crown spread	Trunk ¹ (diameter)				High	Medium	Low	Transplant	Retain	Fell	Pruning		
				(m)	(m)	(m)	High Medium Low	Good Fair Poor	Good Fair Poor	High Medium Low								
885	Phyllanthus emblica	餘甘子	HyD	5.5	3.5	0.13	L	F	P			L					Growing near footing of Highway	TS0002C
886	Phyllanthus emblica	餘甘子	HyD	4.0	2.5	0.09	L	F	P			L					Tree bark broken, imbalanced trunk	TS0002C
887	Celtis sinensis	朴樹	HyD	6.0	3.5	0.1	L	G	G		M						Young tree	TS0002C
888	Celtis sinensis	朴樹	HyD	5.5	3.0	0.11	L	G	G		M						Young tree	TS0002C
889	Phyllanthus emblica	餘甘子	HyD	3.0	2.5	0.09	L	P	P			L					Suppressed, distorted form	TS0002C
890	Phyllanthus emblica	餘甘子	HyD	3.5	3.0	0.13	L	F	G		M						Forked trunk	TS0002C
891	Eucalyptus exserta	窿緣桉	HyD	8.0	1.0	0.09	L	F	F			L					Young tree with slender trunk & sparse foliage	TS0002C
892	Eucalyptus exserta	窿緣桉	HyD	4.5	1.0	0.09	L	P	P			L					Topped & broken trunk	TS0002C
893	Eucalyptus exserta	窿緣桉	HyD	11.0	2.0	0.14	L	F	F			L					Crooked & leaning trunk, imbalanced crown	TS0002C
894	Eucalyptus exserta	窿緣桉	HyD	6.0	2.5	0.08	L	P	P			L					Broken trunk with large open wound	TS0002C
895	Syzygium cumini	海南蒲桃	HyD	5.5	2.0	0.09	L	P	P			L					Broken trunk with large open wound, imbalanced crown	TS0002C
896	Syzygium cumini	海南蒲桃	HyD	5.0	2.5	0.08	L	F	F			L					Broken branches, imbalanced crown	TS0002C
897	Eucalyptus exserta	窿緣桉	HyD	13.0	4.0	0.31	L	F	F			L					Twin-trunk with included bark	TS0002C
898	Eucalyptus exserta	窿緣桉	HyD	9.0	3.0	0.13	L	F	F			L					Imbalanced crown, sparse foliage	TS0002C
899	Eucalyptus exserta	窿緣桉	HyD	12.0	4.5	0.19	L	P	P			L					Main trunk broken & collapsed, only stump left	TS0002C
900	Syzygium cumini	海南蒲桃	HyD	2.5	1.0	0.09	L	P	P			L					Topped trunk, died back & broken branches	TS0002C
901	Acacia confusa	台灣相思	HyD	9.0	3.0	0.19	L	P	F			L					One large branch topped, damaged bark, imbalanced crown	TS0002C
902	Acacia confusa	台灣相思	HyD	10.0	2.0	0.21	L	P	P			L					Multi-trunk, several branches topped, died back branches, sparse foliage	TS0002C
903	Eucalyptus exserta	窿緣桉	HyD	8.0	3.0	0.19	L	P	F			L					Multi-trunk, one of them crooked & another one topped	TS0002C
904	Eucalyptus exserta	窿緣桉	HyD	15.0	4.0	0.23	L	P	F			L					Multi-trunk, one of them leaning & died back	TS0002C
905	Acacia confusa	台灣相思	HyD	7.0	5.0	0.17	L	P	F			L					Multi-trunk with included bark, plenty of broken branches	TS0002C
906	Eucalyptus exserta	窿緣桉	HyD	13.0	5.0	0.19	L	F	F			L					Imbalanced crown, broken branches	TS0002C
907	Eucalyptus exserta	窿緣桉	HyD	11.0	5.0	0.22	L	P	P			L					Trunk terminal broken & torn off, imbalanced crown	TS0002C
908	Acacia confusa	台灣相思	HyD	3.5	3.0	0.1	L	P	P			L					Suppressed, many branches topped	TS0002C
909	Acacia confusa	台灣相思	HyD	10.0	6.0	0.21	L	P	P			L					Multi-trunk, several branches topped & broken	TS0002C
910	Acacia confusa	台灣相思	HyD	9.0	8.0	0.26	L	P	P			L					Multi-trunk, several branches topped & broken	TS0002C
911	Acacia confusa	台灣相思	HyD	3.5	3.0	0.13	L	P	P			L					Multi-trunk, several branches topped & broken	TS0002C
912	Acacia confusa	台灣相思	HyD	10.0	7.0	0.2	L	P	P			L					Multi-trunk, several branches topped & broken	TS0002C
913	Eucalyptus exserta	窿緣桉	HyD	11.0	4.0	0.15	L	F	F			L					Crooked upper trunk, imbalanced crown	TS0001B
914	Eucalyptus exserta	窿緣桉	HyD	14.0	5.0	0.21	L	F	F			L					Crooked trunk, imbalanced crown	TS0001B
915	Eucalyptus exserta	窿緣桉	HyD	15.0	8.0	0.25	L	P	P			L					Trunk terminal broken & torn off, imbalanced crown	TS0001B
916	Callistemon viminalis	串錢柳	HyD	5.5	4.0	0.16	L	P	P			L					Multi-trunk, many branches topped, imbalanced crown	TS0001B
917	Callistemon viminalis	串錢柳	HyD	1.5	2.0	0.1	L	P	P			L					Topped trunk, suppressed	TS0001B
918	Callistemon viminalis	串錢柳	HyD	1.5	2.0	0.09	L	P	P			L					Topped trunk, suppressed	TS0001B
919	Vernicia montana	木油桐	HyD	5.0	6.0	0.14	L	F	G		M						Forked trunk	TS0001B
920	Bauhinia variegata	宮粉羊蹄甲	HyD	6.0	4.0	0.12	L	G	G		M						Minor died back branches	TS0001B
921	Bauhinia variegata	宮粉羊蹄甲	HyD	6.0	4.0	0.12	L	G	G		M						Minor died back branches	TS0001B
922	Bauhinia variegata	宮粉羊蹄甲	HyD	5.0	3.0	0.08	L	G	G		M						Minor died back branches	TS0001B
923	Bauhinia variegata	宮粉羊蹄甲	HyD	6.0	5.0	0.1	L	G	G		M						Minor died back branches	TS0001B

(Improvement to Pok Oi Interchange)
Tree Assessment Schedule

Drawing No. HSDWU2518-TS0001B-TS0004A

Tree no.	Tree Species (Botanical name)	Chinese Name (Hong Kong)	Tree Maintenance Dept.	Tree Size			Amenity Value	Form	Health	Survial Rate after Transplanting			Recommendation				Remarks ²	Ref Drawing
				Height	Average crown spread	Trunk ¹ (diameter)				High	Medium	Low	Transplant	Retain	Fell	Pruning		
				(m)	(m)	(m)	High Medium Low	Good Fair Poor	Good Fair Poor	High Medium Low								
924	Bauhinia variegata	宮粉羊蹄甲	HyD	5.0	6.0	0.13	L	G	G		M						Minor died back branches	TS0001B
925	Bauhinia variegata	宮粉羊蹄甲	HyD	5.5	7.0	0.14	L	G	G		M						Minor died back branches	TS0001B
926	Dead tree		HyD	2.5	2.5	0.13	L											TS0001B
927	Ficus hispida	對葉榕	HyD	2.5	3.0	0.12	L	F	F		M						Forked trunk, died back branches	TS0001B
928	Ficus hispida	對葉榕	HyD	3.0	2.0	0.08	L	F	F		M						Forked & crooked trunk, died back branches	TS0001B
929	Ficus hispida	對葉榕	HyD	4.0	6.0	0.14	L	F	F		M						Forked trunk, died back branches	TS0001B
930	Bauhinia variegata	宮粉羊蹄甲	HyD	5.0	5.5	0.12	L	G	G		M						Minor died back branches	TS0001B
931	Bauhinia variegata	宮粉羊蹄甲	HyD	5.0	4.0	0.12	L	G	G		M						Minor died back branches	TS0001B
932	Bauhinia variegata	宮粉羊蹄甲	HyD	5.0	4.5	0.11	L	G	G		M						Minor died back branches	TS0001B
933	Bauhinia variegata	宮粉羊蹄甲	HyD	5.5	5.0	0.14	L	G	G		M						Minor died back branches	TS0001B
934	Ficus hispida	對葉榕	HyD	4.0	7.0	0.12	L	F	F		M						Forked trunk, died back branches	TS0001B
935	Ficus hispida	對葉榕	HyD	5.0	6.0	0.15	L	F	F		M						Forked trunk, died back branches	TS0001B
936	Ficus hispida	對葉榕	HyD	5.0	4.0	0.16	L	G	F		M						Minor died back branches	TS0001B
937	Ficus hispida	對葉榕	HyD	5.0	3.5	0.16	L	F	F		M						Forked trunk, died back branches	TS0001B
938	Liquidambar formosana	楓香	HyD	5.0	3.5	0.1	L	F	G		M						Young tree with crooked trunk	TS0001B
939	Liquidambar formosana	楓香	HyD	5.0	4.0	0.1	L	F	G		M						Young tree with crooked trunk	TS0001B
940	Liquidambar formosana	楓香	HyD	5.0	3.5	0.11	L	G	G		M						Young tree	TS0001B
941	Bauhinia variegata	宮粉羊蹄甲	HyD	4.5	5.0	0.16	L	F	F		M						Forked & twisted trunk with included bark, minor broken branches	TS0001B
942	Bauhinia variegata	宮粉羊蹄甲	HyD	4.5	5.0	0.13	L	G	G		M						Minor died back branches	TS0001B
943	Ficus hispida	對葉榕	HyD	5.5	6.0	0.21	L	F	F		M						Forked trunk, died back branches	TS0001B
944	Ficus hispida	對葉榕	HyD	5.0	6.0	0.12	L	F	F		M						Forked trunk, died back branches	TS0001B
945	Ficus hispida	對葉榕	HyD	5.0	6.0	0.16	L	F	F		M						Forked trunk, died back branches	TS0001B
946	Ficus hispida	對葉榕	HyD	5.0	3.0	0.11	L	F	F		M						Forked trunk, died back branches	TS0001B
947	Liquidambar formosana	楓香	HyD	5.0	3.5	0.11	L	G	G		M						Young tree	TS0001B
948	Bauhinia variegata	宮粉羊蹄甲	HyD	6.0	5.0	0.17	L	F	G		M						Forked trunk	TS0001B
949	Bauhinia variegata	宮粉羊蹄甲	HyD	5.0	4.5	0.11	L	F	G		M						Young tree with crooked trunk	TS0001B
950	Mallotus paniculatus	白楸	HyD	3.0	3.5	0.09	L	P	P			L					Serious leaning, broken branches, infested with pest	TS0001B
951	Ficus hispida	對葉榕	HyD	4.0	5.5	0.13	L	F	F		M						Forked trunk, died back branches	TS0001B
952	Ficus hispida	對葉榕	HyD	4.0	5.0	0.12	L	F	F		M						Broken & died back branches	TS0001B
953	Ficus hispida	對葉榕	HyD	5.0	4.5	0.12	L	F	F		M						Broken & died back branches	TS0001B
954	Liquidambar formosana	楓香	HyD	4.5	4.0	0.08	L	P	F			L					V-shaped trunk with one serious leaning & topped	TS0001B
955	Vernicia montana	木油桐	HyD	5.0	3.5	0.07	L	F	F		M						V-shaped trunk, imbalanced crown	TS0001B
956	Vernicia montana	木油桐	HyD	7.0	6.5	0.13	L	F	G		M						Imbalanced crown	TS0001B
957	Vernicia montana	木油桐	HyD	6.5	6.0	0.09	L	F	G		M						Imbalanced crown	TS0001B
958	Vernicia montana	木油桐	HyD	7.0	5.5	0.11	L	F	G		M						Imbalanced crown	TS0001B
959	Ficus hispida	對葉榕	HyD	7.0	6.0	0.16	L	F	F		M						Forked trunk, died back branches	TS0001B
960	Ficus hispida	對葉榕	HyD	4.0	4.5	0.09	L	F	F		M						Forked trunk, died back branches	TS0001B
961	Ficus hispida	對葉榕	HyD	7.0	5.0	0.1	L	F	F		M						Forked trunk, died back branches	TS0001B
962	Ficus hispida	對葉榕	HyD	6.0	6.5	0.1	L	F	F		M						Forked trunk, died back branches	TS0001B

(Improvement to Pok Oi Interchange)
Tree Assessment Schedule

Drawing No. HSDWU2518-TS0001B-TS0004A

Tree no.	Tree Species (Botanical name)	Chinese Name (Hong Kong)	Tree Maintenance Dept.	Tree Size			Amenity Value	Form	Health	Survial Rate after Transplanting			Recommendation				Remarks ²	Ref Drawing
				Height	Average crown spread	Trunk ¹ (diameter)				High	Medium	Low	Transplant	Retain	Fell	Pruning		
				(m)	(m)	(m)	High Medium Low	Good Fair Poor	Good Fair Poor	High Medium Low								
963	Ficus hispida	對葉榕	HyD	6.0	5.0	0.13	L	F	F		M						Forked trunk, died back branches	TS0001B
964	Ficus hispida	對葉榕	HyD	7.0	6.0	0.13	L	F	F		M						Forked trunk, died back branches	TS0001B
965	Bauhinia variegata	宮粉羊蹄甲	HyD	6.0	3.0	0.1	L	F	G		M						Young tree with narrow crown, minor died back branches	TS0001B
966	Bauhinia variegata	宮粉羊蹄甲	HyD	6.0	3.0	0.1	L	F	G		M						Young tree with narrow crown, minor died back branches	TS0001B
967	Bauhinia variegata	宮粉羊蹄甲	HyD	6.0	3.0	0.1	L	F	G		M						Young tree with narrow crown, minor died back branches	TS0001B
968	Bauhinia variegata	宮粉羊蹄甲	HyD	6.0	3.0	0.1	L	F	G		M						Young tree with narrow crown, minor died back branches	TS0001B
969	Bauhinia variegata	宮粉羊蹄甲	HyD	6.0	3.0	0.11	L	F	G		M						Young tree with narrow crown, minor died back branches	TS0001B
970	Bauhinia variegata	宮粉羊蹄甲	HyD	4.0	3.5	0.09	L	F	G		M						Young tree with narrow crown, minor died back branches	TS0001B
971	Bauhinia variegata	宮粉羊蹄甲	HyD	4.0	3.5	0.11	L	F	G		M						Young tree with narrow crown, minor died back branches	TS0001B
972	Vernicia montana	木油桐	HyD	5.0	3.0	0.11	L	P	F			L					Seriously crooked trunk, imbalanced crown	TS0001B
973	Vernicia montana	木油桐	HyD	5.5	3.0	0.1	L	F	F		M						Forked trunk, died back branches	TS0001B
974	Dead tree		HyD	5.0	3.0	0.09	L											TS0001B
975	Ficus hispida	對葉榕	HyD	6.0	5.0	0.13	L	F	F		M						Imbalanced crown, died back branches	TS0001B
976	Ficus hispida	對葉榕	HyD	5.0	4.0	0.11	L	F	F		M						Forked trunk, imbalanced crown, died back branches	TS0001B
977	Ficus hispida	對葉榕	HyD	5.0	4.0	0.08	L	F	F		M						Forked trunk, imbalanced crown, died back branches	TS0001B
978	Ficus hispida	對葉榕	HyD	5.0	4.0	0.11	L	F	F		M						Forked trunk, imbalanced crown, died back branches	TS0001B
979	Ficus hispida	對葉榕	HyD	5.0	4.0	0.13	L	F	F		M						Forked trunk, imbalanced crown, died back branches	TS0001B
980	Ficus hispida	對葉榕	HyD	5.0	4.0	0.14	L	F	F		M						Forked trunk, imbalanced crown, died back branches	TS0001B
981	Ficus hispida	對葉榕	HyD	5.0	7.0	0.17	L	F	F		M						Forked trunk, imbalanced crown, died back branches	TS0001B
982	Ficus hispida	對葉榕	HyD	2.5	2.5	0.07	L	F	F		M						Forked trunk, imbalanced crown, died back branches	TS0001B
983	Bauhinia variegata	宮粉羊蹄甲	HyD	5.0	4.5	0.1	L	F	G		M						Young tree with narrow crown, minor died back branches	TS0001B
984	Bauhinia variegata	宮粉羊蹄甲	HyD	6.0	4.0	0.12	L	F	G		M						Young tree with narrow crown, minor died back branches	TS0001B
985	Bauhinia variegata	宮粉羊蹄甲	HyD	6.0	4.0	0.12	L	F	G		M						Young tree with narrow crown, minor died back branches	TS0001B
986	Bauhinia variegata	宮粉羊蹄甲	HyD	6.5	5.0	0.11	L	F	G		M						Young tree with narrow crown, minor died back branches	TS0001B
987	Bauhinia variegata	宮粉羊蹄甲	HyD	4.0	3.0	0.1	L	F	G		M						Young tree with narrow crown, minor died back branches	TS0001B
988	Bauhinia variegata	宮粉羊蹄甲	HyD	5.0	4.0	0.09	L	F	G		M						Young tree with narrow crown, minor died back branches	TS0001B
989	Bauhinia variegata	宮粉羊蹄甲	HyD	6.0	5.0	0.16	L	F	G		M						Forked trunkwith narrow crown	TS0001B
990	Bauhinia variegata	宮粉羊蹄甲	HyD	5.0	4.0	0.09	L	F	G		M						Young tree with narrow & imbalanced crown	TS0001B
991	Ficus hispida	對葉榕	HyD	6.0	7.0	0.16	L	F	F		M						Forked trunk, imbalanced crown, died back branches	TS0001B
992	Ficus hispida	對葉榕	HyD	5.0	3.0	0.11	L	F	F		M						Leaning, imbalanced crown	TS0001B
993	Ficus hispida	對葉榕	HyD	5.5	5.0	0.16	L	F	F		M						Forked trunk, imbalanced crown, died back branches	TS0001B
994	Ficus hispida	對葉榕	HyD	6.0	5.0	0.12	L	F	F		M						Forked trunk, imbalanced crown, died back branches	TS0001B
995	Ficus hispida	對葉榕	HyD	6.0	4.0	0.11	L	F	F		M						Forked trunk, imbalanced crown, died back branches	TS0001B
996	Ficus hispida	對葉榕	HyD	6.0	4.5	0.12	L	F	F		M						Forked trunk, imbalanced crown, died back branches	TS0001B
997	Ficus hispida	對葉榕	HyD	7.0	6.0	0.14	L	F	F		M						Forked trunk, imbalanced crown, died back branches	TS0001B
998	Vernicia montana	木油桐	HyD	7.0	5.5	0.11	L	F	F		M						Forked trunk, imbalanced crown, died back branches	TS0001B
999	Vernicia montana	木油桐	HyD	7.0	5.0	0.11	L	F	F		M						Forked trunk, imbalanced crown, died back branches	TS0001B
1000	Vernicia montana	木油桐	HyD	7.0	5.0	0.13	L	F	F		M						Forked trunk, imbalanced crown, died back branches	TS0001B
1001	Bauhinia variegata	宮粉羊蹄甲	HyD	5.0	4.0	0.1	L	F	G		M						Young tree with narrow crown	TS0001B

(Improvement to Pok Oi Interchange)
Tree Assessment Schedule

Drawing No. HSDWU2518-TS0001B-TS0004A

Tree no.	Tree Species (Botanical name)	Chinese Name (Hong Kong)	Tree Maintenance Dept.	Tree Size			Amenity Value	Form	Health	Survial Rate after Transplanting			Recommendation				Remarks ²	Ref Drawing
				Height	Average crown spread	Trunk ¹ (diameter)				High	Fair	Poor	Transplant	Retain	Fell	Pruning		
				(m)	(m)	(m)	Low	Fair	Poor	High	Medium	Low						
1002	Bauhinia variegata	宮粉羊蹄甲	HyD	5.5	5.0	0.11	L	F	G		M						Young tree with narrow crown	TS0001B
1003	Bauhinia variegata	宮粉羊蹄甲	HyD	6.0	5.0	0.14	L	F	G		M						Young tree with narrow crown	TS0001B
1004	Bauhinia variegata	宮粉羊蹄甲	HyD	7.0	6.0	0.11	L	F	G		M						Young tree with forked trunk, minor died back branches	TS0001B
1005	Bauhinia variegata	宮粉羊蹄甲	HyD	7.0	4.0	0.12	L	F	G		M						Young tree with narrow crown	TS0001B
1006	Bauhinia variegata	宮粉羊蹄甲	HyD	5.0	3.0	0.09	L	F	G		M						Young tree with forked trunk & narrow crown	TS0001B
1007	Bauhinia variegata	宮粉羊蹄甲	HyD	5.5	4.0	0.09	L	F	G		M						Young tree with forked trunk & narrow crown	TS0001B
1008	Bauhinia variegata	宮粉羊蹄甲	HyD	5.0	3.0	0.08	L	F	G		M						Young tree with forked trunk & narrow crown	TS0001B
1009	Bauhinia variegata	宮粉羊蹄甲	HyD	5.5	4.0	0.09	L	F	G		M						Young tree with narrow crown	TS0001B
1010	Bauhinia variegata	宮粉羊蹄甲	HyD	5.0	4.0	0.09	L	F	G		M						Young tree with narrow crown	TS0001B
1011	Bauhinia variegata	宮粉羊蹄甲	HyD	5.5	3.5	0.1	L	F	G		M						Young tree with forked trunk & narrow crown	TS0001B
1012	Bauhinia variegata	宮粉羊蹄甲	HyD	5.5	4.5	0.13	L	F	G		M						Young tree with forked trunk & narrow crown	TS0001B
1013	Bauhinia variegata	宮粉羊蹄甲	HyD	5.5	3.0	0.12	L	F	G		M						Young tree with forked trunk & narrow crown	TS0001B
1014	Ficus hispida	對葉榕	HyD	5.0	4.0	0.1	L	F	F		M						Forked trunk, died back branches	TS0001B
1015	Ficus hispida	對葉榕	HyD	5.0	6.0	0.14	L	F	F		M						Forked trunk, died back branches	TS0001B
1016	Bauhinia variegata	宮粉羊蹄甲	HyD	5.0	4.0	0.09	L	F	G		M						Young tree with narrow crown	TS0001B
1017	Bauhinia variegata	宮粉羊蹄甲	HyD	5.5	5.0	0.1	L	F	G		M						Young tree with narrow crown	TS0001B
1018	Ficus hispida	對葉榕	HyD	5.0	3.0	0.09	L	F	F		M						Forked trunk, imbalanced crown, died back branches	TS0001B
1019	Ficus hispida	對葉榕	HyD	6.0	6.0	0.14	L	F	F		M						Forked trunk, imbalanced crown, died back branches	TS0001B
1020	Ficus hispida	對葉榕	HyD	6.0	5.5	0.13	L	F	F		M						Forked trunk, imbalanced crown, died back branches	TS0001B
1021	Ficus hispida	對葉榕	HyD	4.5	4.0	0.08	L	F	F		M						Forked trunk, imbalanced crown, died back branches	TS0001B
1022	Ficus hispida	對葉榕	HyD	5.0	4.5	0.11	L	F	F		M						Forked trunk, imbalanced crown, died back branches	TS0001B
1023	Ficus hispida	對葉榕	HyD	5.0	4.5	0.06	L	F	F		M						Forked trunk, imbalanced crown, died back branches	TS0001B
1024	Ficus hispida	對葉榕	HyD	5.0	5.0	0.12	L	F	F		M						Forked trunk, imbalanced crown, died back branches	TS0001B
1025	Ficus hispida	對葉榕	HyD	4.5	6.0	0.11	L	F	F		M						Forked trunk, imbalanced crown, died back branches	TS0001B
1026	Bauhinia variegata	宮粉羊蹄甲	HyD	5.0	4.0	0.1	L	F	G		M						Young tree with narrow crown	TS0001B
1027	Bauhinia variegata	宮粉羊蹄甲	HyD	5.5	5.0	0.14	L	F	G		M						Young tree with forked trunk & narrow crown	TS0001B
1028	Bauhinia variegata	宮粉羊蹄甲	HyD	5.5	4.0	0.11	L	F	G		M						Young tree with narrow crown	TS0001B
1029	Bauhinia variegata	宮粉羊蹄甲	HyD	5.0	4.0	0.1	L	F	G		M						Young tree with crooked trunk & imbalanced crown	TS0001B
1030	Bauhinia variegata	宮粉羊蹄甲	HyD	6.0	4.0	0.09	L	F	G		M						Young tree with forked trunk & narrow crown	TS0001B
1031	Ficus hispida	對葉榕	HyD	6.0	5.0	0.13	L	F	F		M						Forked trunk, died back branches	TS0001B
1032	Ficus hispida	對葉榕	HyD	6.0	5.5	0.07	L	F	F		M						Forked trunk, died back branches	TS0001B
1033	Ficus hispida	對葉榕	HyD	5.0	5.0	0.11	L	F	F		M						Forked trunk, imbalanced crown, died back branches	TS0001B
1034	Ficus hispida	對葉榕	HyD	5.0	4.0	0.09	L	F	F		M						Forked trunk, died back branches	TS0001B
1035	Ficus hispida	對葉榕	HyD	6.0	4.0	0.13	L	F	F		M						Forked trunk, died back branches	TS0001B
1036	Vernicia montana	木油桐	HyD	7.0	4.5	0.1	L	F	F		M						Young tree with narrow crown, died back branches	TS0001B
1037	Vernicia montana	木油桐	HyD	5.5	4.0	0.1	L	F	F		M						Young tree with narrow crown, died back branches	TS0001B
1038	Bauhinia variegata	宮粉羊蹄甲	HyD	5.0	4.0	0.11	L	F	G		M						Young tree with narrow crown	TS0001B
1039	Bauhinia variegata	宮粉羊蹄甲	HyD	5.0	3.0	0.09	L	F	G		M						Young tree with narrow crown	TS0001B
1040	Ficus hispida	對葉榕	HyD	4.0	5.0	0.08	L	F	F		M						Forked trunk, imbalanced crown, died back branches	TS0001B

(Improvement to Pok Oi Interchange)
Tree Assessment Schedule

Drawing No. HSDWU2518-TS0001B-TS0004A

Tree no.	Tree Species (Botanical name)	Chinese Name (Hong Kong)	Tree Maintenance Dept.	Tree Size			Amenity Value	Form	Health	Survial Rate after Transplanting			Recommendation				Remarks ²	Ref Drawing	
				Height	Average crown spread	Trunk ¹ (diameter)				High Medium Low	Good Fair Poor	Good Fair Poor	High	Medium	Low	Transplant			Retain
				(m)	(m)	(m)													
1041	Ficus hispida	對葉榕	HyD	6.0	4.0	0.12	L	F	F		M							Forked trunk, imbalanced crown, died back branches	TS0001B
1042	Ficus hispida	對葉榕	HyD	5.0	6.0	0.09	L	F	F		M							Forked trunk, imbalanced crown, died back branches	TS0001B
1043	Ficus hispida	對葉榕	HyD	5.0	4.0	0.11	L	F	F		M							Forked trunk, imbalanced crown, died back branches	TS0001B
1044	Bauhinia variegata	宮粉羊蹄甲	HyD	5.5	4.0	0.09	L	F	F		M							Young tree with narrow crown, damaged bark	TS0001B
1045	Ficus hispida	對葉榕	HyD	5.0	6.0	0.13	L	F	F		M							Forked trunk, imbalanced crown, died back branches	TS0001B
1046	Vernicia montana	木油桐	HyD	5.5	4.5	0.12	L	F	P			L						Cavity in trunk, broken branches, imbalanced crown	TS0001B
1047	Vernicia montana	木油桐	HyD	6.0	5.0	0.11	L	F	F		M							Imbalanced crown, died back branches	TS0001B
1048	Bauhinia variegata	宮粉羊蹄甲	HyD	6.0	5.0	0.1	L	F	G		M							Young tree with narrow crown	TS0001B
1049	Bauhinia variegata	宮粉羊蹄甲	HyD	6.0	4.0	0.11	L	F	G		M							Young tree with narrow crown	TS0001B
1050	Bauhinia variegata	宮粉羊蹄甲	HyD	5.0	4.0	0.1	L	F	G		M							Young tree with narrow crown	TS0001B
1051	Ficus hispida	對葉榕	HyD	5.5	6.0	0.27	L	F	G		M							Imbalanced crown, minor died back branches	TS0001B
1052	Ficus hispida	對葉榕	HyD	4.0	4.0	0.06	L	F	G		M							Forked trunk with minor died back branches	TS0001B
1053	Ficus hispida	對葉榕	HyD	4.5	4.0	0.07	L	F	G		M							Forked trunk with minor died back branches	TS0001B
1054	Ficus hispida	對葉榕	HyD	5.0	6.0	0.15	L	F	G		M							Forked trunk with minor died back branches	TS0001B
1055	Ficus hispida	對葉榕	HyD	5.0	4.0	0.18	L	F	G		M							Forked trunk with minor died back branches	TS0001B
1056	Ficus hispida	對葉榕	HyD	4.0	4.0	0.19	L	F	G		M							Forked trunk with minor died back branches	TS0001B
1057	Ficus hispida	對葉榕	HyD	5.0	4.0	0.24	L	F	G		M							Forked trunk with minor died back branches	TS0001B
1058	Ficus hispida	對葉榕	HyD	4.0	3.0	0.16	L	F	G		M							Forked trunk with minor died back branches	TS0001B
1059	Ficus hispida	對葉榕	HyD	5.0	6.0	0.14	L	F	G		M							Forked trunk with minor died back branches	TS0001B
1060	Liquidambar formosana	楓香	HyD	5.0	5.0	0.11	L	F	G		M							Crooked trunk, imbalanced crown	TS0001B
1061	Bauhinia variegata	宮粉羊蹄甲	HyD	5.5	3.0	0.09	L	F	G		M							Young tree with narrow crown	TS0001B
1062	Bauhinia variegata	宮粉羊蹄甲	HyD	5.0	3.0	0.11	L	F	G		M							Young tree with narrow crown	TS0001B
1063	Bauhinia variegata	宮粉羊蹄甲	HyD	4.5	3.0	0.1	L	F	G		M							Young tree with narrow crown	TS0001B
1064	Ficus hispida	對葉榕	HyD	4.0	4.0	0.12	L	F	F		M							Forked trunk, imbalanced crown, died back branches	TS0001B
1065	Vernicia montana	木油桐	HyD	5.5	5.0	0.1	L	G	G		M							Minor died back branches	TS0001B
1066	Ficus hispida	對葉榕	HyD	6.0	5.0	0.12	L	F	F		M							Imbalanced crown, died back branches	TS0001B
1067	Ficus hispida	對葉榕	HyD	5.5	5.0	0.1	L	F	F		M							Imbalanced crown, died back branches	TS0001B
1068	Ficus hispida	對葉榕	HyD	3.0	5.0	0.14	L	F	F		M							Forked trunk, imbalanced crown, died back branches	TS0001B
1069	Bauhinia variegata	宮粉羊蹄甲	HyD	6.0	3.5	0.12	L	F	G		M							Young tree with narrow crown	TS0001B
1070	Bauhinia variegata	宮粉羊蹄甲	HyD	6.0	2.5	0.11	L	F	G		M							Young tree with forked trunk & narrow crown	TS0001B
1071	Ficus hispida	對葉榕	HyD	4.0	3.0	0.11	L	P	F		M							Slanting, imbalanced crown	TS0001B
1072	Ficus hispida	對葉榕	HyD	3.0	2.5	0.07	L	F	F		M							Young tree with narrow crown	TS0001B
1073	Bauhinia variegata	宮粉羊蹄甲	HyD	5.0	3.0	0.1	L	F	F		M							Included bark	TS0001B
1074	Bauhinia variegata	宮粉羊蹄甲	HyD	6.0	4.0	0.14	L	F	F		M							Included bark, multi-trunk	TS0001B
1075	Bauhinia variegata	宮粉羊蹄甲	HyD	5.0	3.0	0.11	L	P	F		M							Included bark, imbalanced crown	TS0001B
1076	Bauhinia variegata	宮粉羊蹄甲	HyD	5.0	3.0	0.08	L	F	F		M							Young tree, forked trunk, included bark	TS0001B
1077	Bauhinia variegata	宮粉羊蹄甲	HyD	6.0	3.0	0.14	L	F	F		M							Included bark, forked trunk	TS0001B
1078	Bauhinia variegata	宮粉羊蹄甲	HyD	5.0	3.5	0.09	L	P	F		M							Young tree, multi-trunk, crossing branches	TS0001B
1079	Bauhinia variegata	宮粉羊蹄甲	HyD	5.0	3.0	0.1	L	P	F		M							Included bark, forked trunk	TS0001B

(Improvement to Pok Oi Interchange)
Tree Assessment Schedule

Drawing No. HSDWU2518-TS0001B-TS0004A

Tree no.	Tree Species (Botanical name)	Chinese Name (Hong Kong)	Tree Maintenance Dept.	Tree Size			Amenity Value	Form	Health	Survival Rate after Transplanting			Recommendation				Remarks ²	Ref Drawing
				Height	Average crown spread	Trunk ¹ (diameter)				High	Medium	Low	Transplant	Retain	Fell	Pruning		
				(m)	(m)	(m)	High Medium Low	Good Fair Poor	Good Fair Poor	High Medium Low								
1080	Albizia lebbek	大葉合歡	HyD	6.5	6.0	0.25	L	P	P			L					Slanting seriously, imbalanced crown	TS0001B
1081	Ficus hispida	對葉榕	HyD	5.0	4.0	0.16	L	P	F			L					Multi-trunk	TS0001B
1082	Bauhinia variegata	宮粉羊蹄甲	HyD	4.5	2.5	0.09	L	F	F		M						Forked trunk	TS0001B
1083	Acacia confusa	台灣相思	HyD	6.0	5.0	0.18	L	P	P			L					Forked trunk, died back branches	TS0001B
1084	Bauhinia variegata	宮粉羊蹄甲	HyD	4.5	3.0	0.1	L	P	F		M						Imbalanced crown	TS0001B
1085	Ficus hispida	對葉榕	HyD	4.0	4.5	0.13	L	P	F		M						Imbalanced crown, forked trunk	TS0001B
1086	Acacia confusa	台灣相思	HyD	5.5	3.0	0.13	L	P	P			L					Forked trunk	TS0001B
1087	Bauhinia variegata	宮粉羊蹄甲	HyD	4.0	3.0	0.11	L	F	F		M						Multi-trunk	TS0001B
1088	Bauhinia variegata	宮粉羊蹄甲	HyD	4.0	3.0	0.11	L	F	F		M						Multi-trunk	TS0001B
1089	Ficus hispida	對葉榕	HyD	3.5	4.0	0.1	L	P	F		M						Imbalanced crown, multi-trunk	TS0001B
1090	Bauhinia variegata	宮粉羊蹄甲	HyD	3.5	3.0	0.09	L	F	F		M						Young tree, multi-trunk	TS0001B
1091	Bauhinia variegata	宮粉羊蹄甲	HyD	3.5	3.0	0.11	L	P	F		M						Slanting, imbalanced crown	TS0001B
1092	Bauhinia variegata	宮粉羊蹄甲	HyD	3.5	3.0	0.09	L	F	F		M						Young tree, forked trunk, imbalanced crown	TS0001B
1093	Ficus hispida	對葉榕	HyD	4.5	3.0	0.14	L	P	F		M						Multi-trunk, exposed root	TS0001B
1094	Ficus hispida	對葉榕	HyD	4.5	3.0	0.14	L	F	F		M						Multi-trunk, exposed root	TS0001B
1095	Bauhinia variegata	宮粉羊蹄甲	HyD	4.0	2.5	0.13	L	P	P			L					Included bark, tree bark damaged	TS0001B
1096	Acacia confusa	台灣相思	HyD	6.0	3.5	0.11	L	P	P			L					Slanting, imbalanced crown	TS0001B
1097	Acacia confusa	台灣相思	HyD	6.0	5.0	0.16	L	P	P			L					Included bark, slanting	TS0001B
1098	Acacia confusa	台灣相思	HyD	6.0	3.0	0.09	L	P	P			L					Slanting, imbalanced crown	TS0001B
1099	Acacia confusa	台灣相思	HyD	6.0	4.0	0.11	L	P	P			L					Included bark	TS0001B
1100	Bauhinia variegata	宮粉羊蹄甲	HyD	4.5	3.0	0.11	L	P	F		M						Multi-trunk, tree bark damaged	TS0001B
1101	Bauhinia variegata	宮粉羊蹄甲	HyD	5.0	3.5	0.2	L	F	F		M						Multi-trunk	TS0001B
1102	Bauhinia variegata	宮粉羊蹄甲	HyD	4.0	3.5	0.14	L	P	P			L					Multi-trunk	TS0001B
1103	Liquidambar formosana	楓香	HyD	2.0	2.0	0.1	L	P	F			L					Crooked trunk, multi-trunk	TS0001B
1104	Liquidambar formosana	楓香	HyD	4.0	3.0	0.1	L	P	F			L					Crooked trunk, included bark	TS0001B
1105	Bauhinia variegata	宮粉羊蹄甲	HyD	5.5	3.0	0.14	L	F	F		M						Included trunk	TS0001B
1106	Bauhinia variegata	宮粉羊蹄甲	HyD	5.0	3.0	0.1	L	F	F		M						Forked trunk, crossing branches	TS0001B
1107	Ficus hispida	對葉榕	HyD	4.0	2.5	0.12	L	P	P			L					Forked trunk with minor died back branches	TS0001B
1108	Bauhinia variegata	宮粉羊蹄甲	HyD	4.5	3.0	0.1	L	F	F		M						Forked trunk	TS0001B
1109	Bauhinia variegata	宮粉羊蹄甲	HyD	5.0	2.0	0.1	L	P	f		M						Forked trunk	TS0001B
1110	Leucaena leucocephala	銀合歡	HyD	4.5	2.0	0.07	L	P	P			L					Slanting, imbalanced crown	TS0001B
1111	Bauhinia variegata	宮粉羊蹄甲	HyD	3.5	2.0	0.1	L	F	F		M						Multi-trunk	TS0001B
1112	Liquidambar formosana	楓香	HyD	5.0	2.5	0.1	L	F	F		M						Young tree	TS0001B
1113	Vernicia montana	木油桐	HyD	4.5	4.0	0.11	L	G	F		M						Deciduous tree	TS0001B
1114	Acacia confusa	台灣相思	HyD	5.0	4.5	0.12	L	P	P			L					Crooked trunk	TS0001B
1115	Acacia confusa	台灣相思	HyD	6.0	4.0	0.16	L	P	P			L					Forked trunk, included bark	TS0001B
1116	Bauhinia variegata	宮粉羊蹄甲	HyD	5.5	3.0	0.11	L	P	F			L					Slanting, tree bark damaged	TS0001B
1117	Bauhinia variegata	宮粉羊蹄甲	HyD	5.5	3.0	0.12	L	F	F		M						Slanting, imbalanced crown	TS0001B
1118	Bauhinia variegata	宮粉羊蹄甲	HyD	4.0	2.5	0.11	L	P	F		M						Imbalanced crown	TS0001B

(Improvement to Pok Oi Interchange)
Tree Assessment Schedule

Drawing No. HSDWU2518-TS0001B-TS0004A

Tree no.	Tree Species (Botanical name)	Chinese Name (Hong Kong)	Tree Maintenance Dept.	Tree Size			Amenity Value	Form	Health	Survial Rate after Transplanting			Recommendation				Remarks ²	Ref Drawing
				Height	Average crown spread	Trunk ¹ (diameter)				High	Medium	Low	Transplant	Retain	Fell	Pruning		
				(m)	(m)	(m)	Low	Fair	Good	High	Medium	Low	Transplant	Retain	Fell	Pruning		
1119	Bauhinia variegata	宮粉羊蹄甲	HyD	3.5	3.0	0.12	L	P	P			L					Forked trunk, tree bark damaged	TS0001B
1120	Bauhinia variegata	宮粉羊蹄甲	HyD	3.5	2.5	0.09	L	F	F		M						Young tree, crooked trunk	TS0001B
1121	Bauhinia variegata	宮粉羊蹄甲	HyD	4.0	3.5	0.16	L	F	F		M						Forked trunk	TS0001B
1122	Bauhinia variegata	宮粉羊蹄甲	HyD	4.0	3.0	0.12	L	F	F		M						Forked trunk, imbalanced crown	TS0001B
1123	Bauhinia variegata	宮粉羊蹄甲	HyD	4.0	2.5	0.1	L	F	F		M						Forked trunk, included bark	TS0001B
1124	Bauhinia variegata	宮粉羊蹄甲	HyD	3.5	2.0	0.1	L	F	F		M						Multi-trunk	TS0001B
1125	Bauhinia variegata	宮粉羊蹄甲	HyD	3.5	2.0	0.1	L	F	F		M						Included bark, crossing branches	TS0001B
1126	Leucaena leucocephala	銀合歡	HyD	4.0	3.0	0.1	L	P	P			L					Crooked trunk	TS0001B
1127	Leucaena leucocephala	銀合歡	HyD	4.0	4.0	0.12	L	P	P			L					Slanting	TS0001B
1128	Bauhinia variegata	宮粉羊蹄甲	HyD	4.0	3.0	0.13	L	P	F		M						Included trunk, crossing branches	TS0001B
1129	Bauhinia variegata	宮粉羊蹄甲	HyD	4.0	2.5	0.1	L	P	F			L					Forked trunk, included bark	TS0001B
1130	Acacia confusa	台灣相思	HyD	4.0	3.0	0.1	L	P	F			L					Forked trunk, included bark	TS0001B
1131	Acacia confusa	台灣相思	HyD	5.0	3.5	0.13	L	P	F			L					Forked trunk	TS0001B
1132	Bauhinia variegata	宮粉羊蹄甲	HyD	2.5	2.0	0.1	L	P	F			L					Slanting, forked trunk	TS0001B
1133	Acacia confusa	台灣相思	HyD	5.0	4.0	0.12	L	P	P			L					Forked trunk	TS0001B
1134	Bauhinia variegata	宮粉羊蹄甲	HyD	3.5	3.0	0.1	L	P	P		M						Multi-trunk	TS0001B
1135	Bauhinia variegata	宮粉羊蹄甲	HyD	3.5	3.0	0.09	L	F	F		M						Forked trunk	TS0001B
1136	Acacia confusa	台灣相思	HyD	5.0	3.5	0.14	L	P	F			L					Forked trunk	TS0001B
1137	Bauhinia variegata	宮粉羊蹄甲	HyD	4.0	3.5	0.14	L	F	F		M						Included bark	TS0001B
1138	Bauhinia variegata	宮粉羊蹄甲	HyD	4.0	3.0	0.09	L	F	F		M						Forked trunk	TS0001B
1139	Acacia confusa	台灣相思	HyD	4.0	4.0	0.2	L	P	F			L					Forked trunk	TS0001B
1140	Bauhinia variegata	宮粉羊蹄甲	HyD	3.0	2.0	0.12	L	P	F		M						Included bark, forked trunk	TS0001B
1141	Bauhinia variegata	宮粉羊蹄甲	HyD	3.5	2.0	0.1	L	F	F		M						Slanting, multi-trunk	TS0001B
1142	Bauhinia variegata	宮粉羊蹄甲	HyD	3.0	2.5	0.12	L	P	F		M						Slanting, multi-trunk	TS0001B
1143	Acacia confusa	台灣相思	HyD	3.0	4.0	0.19	L	P	F			L					Slanting, multi-trunk	TS0001B
1144	Acacia confusa	台灣相思	HyD	3.5	2.5	0.12	L	P	F			L					Forked trunk	TS0001B
1145	Ficus hispida	對藥榕	HyD	2.5	2.0	0.1	L	P	F		M						Slanting, multi-trunk	TS0001B
1146	Bauhinia variegata	宮粉羊蹄甲	HyD	4.0	3.5	0.15	L	F	F		M						Included bark	TS0001B
1147	Bauhinia variegata	宮粉羊蹄甲	HyD	3.5	2.5	0.1	L	F	F		M						Forked trunk	TS0001B
1148	Bauhinia variegata	宮粉羊蹄甲	HyD	4.5	3.0	0.12	L	F	F		M						Multi-trunk	TS0001B
1149	Ficus hispida	對藥榕	HyD	3.5	3.0	0.15	L	P	F		M						Multi-trunk	TS0001B
1150	Bauhinia variegata	宮粉羊蹄甲	HyD	4.0	4.0	0.16	L	F	F		M						Forked trunk	TS0001B
1151	Bauhinia variegata	宮粉羊蹄甲	HyD	4.0	3.0	0.1	L	F	F		M						Multi-trunk	TS0001B
1152	Bauhinia variegata	宮粉羊蹄甲	HyD	4.5	4.0	0.16	L	F	F		M						Multi-trunk	TS0001B
1153	Bauhinia variegata	宮粉羊蹄甲	HyD	3.5	2.5	0.11	L	F	F		M						Forked trunk	TS0001B
1154	Bauhinia variegata	宮粉羊蹄甲	HyD	4.5	3.0	0.16	L	F	P			L					Growing near man-hole	TS0001B
1155	Bauhinia variegata	宮粉羊蹄甲	HyD	3.5	3.0	0.17	L	F	F		M						Forked trunk	TS0001B

(Improvement to Pok Oi Interchange)
Tree Assessment Schedule

Drawing No. HSDWU2518-TS0001B-TS0004A

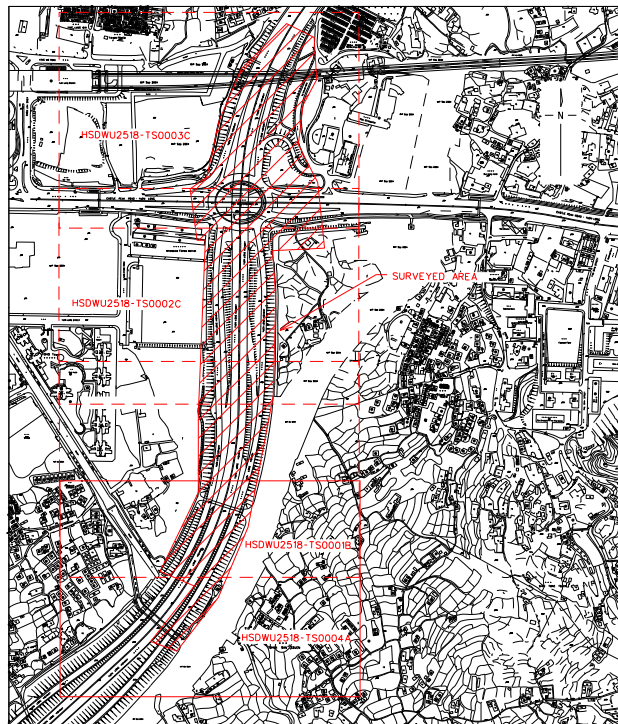
Tree no.	Tree Species (Botanical name)	Chinese Name (Hong Kong)	Tree Maintenance Dept.	Tree Size			Amenity Value	Form	Health	Survial Rate after Transplanting			Recommendation				Remarks ²	Ref Drawing
				Height	Average crown spread	Trunk ¹ diameter				High	Good	Good	Transplant	Retain	Fell	Pruning		
				(m)	(m)	(m)	Medium	Fair	Fair	High	Medium	Low						
1156	Leucaena leucocephala	銀合歡	HyD	8.0	6.0	0.29	L	F	F			L					Multi-trunk, broken branches	TS0001B

Notes:

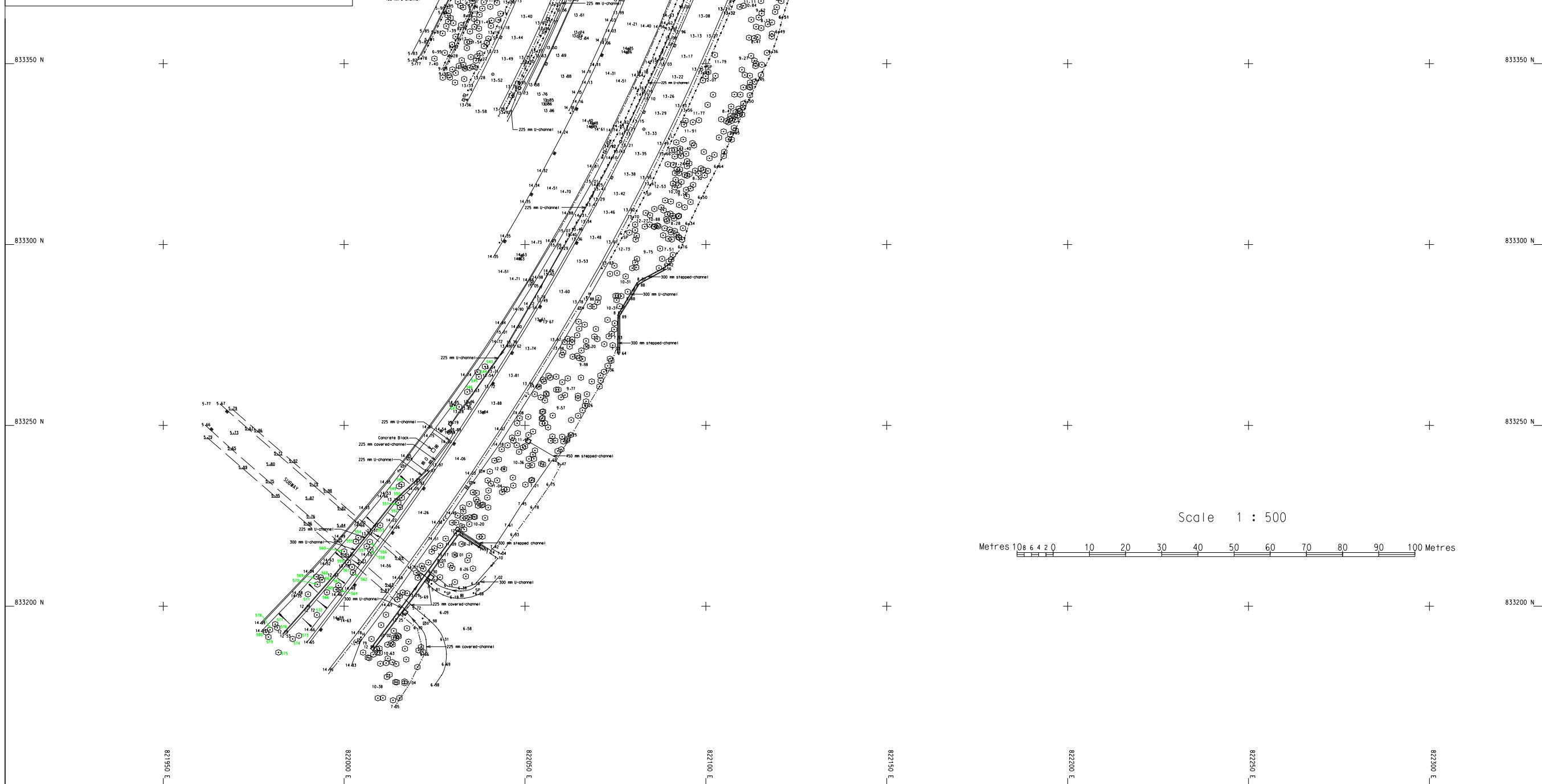
1. Trunk diameter of a tree refers to its diameter at breast height (i.e. measured at 1.3m above ground level) as per *ETWB TCW No. 3/2006*.
2. Special features such as Old and Valuable Trees, ecological, cultural, historical significance or large/ old trees and defects as identified.

Annex E2

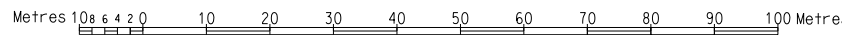
Tree Survey Plans



KEY PLAN SCALE 1:5000



Scale 1 : 500



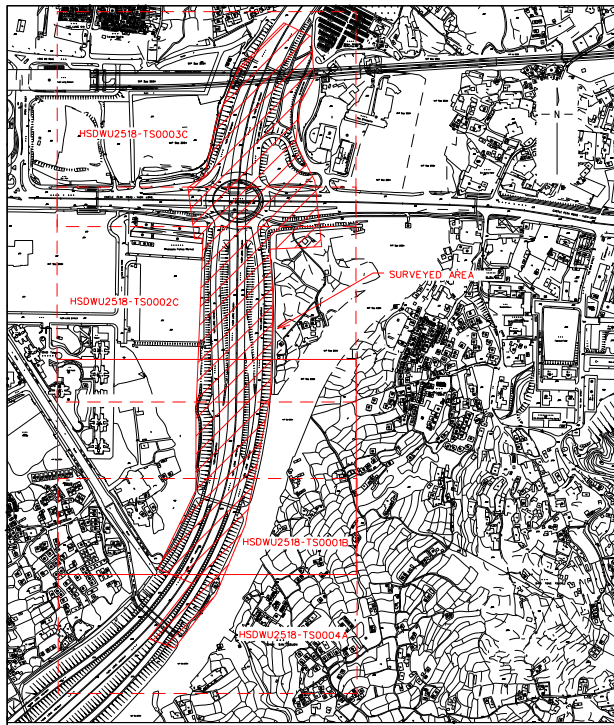
- NOTES :
1. ALL LEVELS ARE IN METRES ABOVE H.K.P.D.
 2. CO-ORDINATES ARE OF HONG KONG 1980 GRID SYSTEM.
 3. CO-ORDINATES OF LOWER LEFT SHEET CORNER:
N: 833150; E: 821906; ROT. ANGLE : 0
 4. MODEL : HSDWU2518-P-B50001C-E.DGN
 5. DRAWING FILE : HSDWU2518-TS0004A.DGN
 6. JOB NO. : WU/0226/08
 7. COMP. FOLDER : WU2518 111
 8. THIS DRAWING SUPERSEDES HSDWU2518-TS0004 AND SHOULD BE READ IN CONJUNCTION WITH HSDWU2518-TS0001B, HSDWU2518-TS0002C & HSDWU2518-TS0003C.
 9. 8.41 DENOTES LEVEL SHOWN UNDERNEATH THE FLYOVER AND SUBWAY.

LEGEND

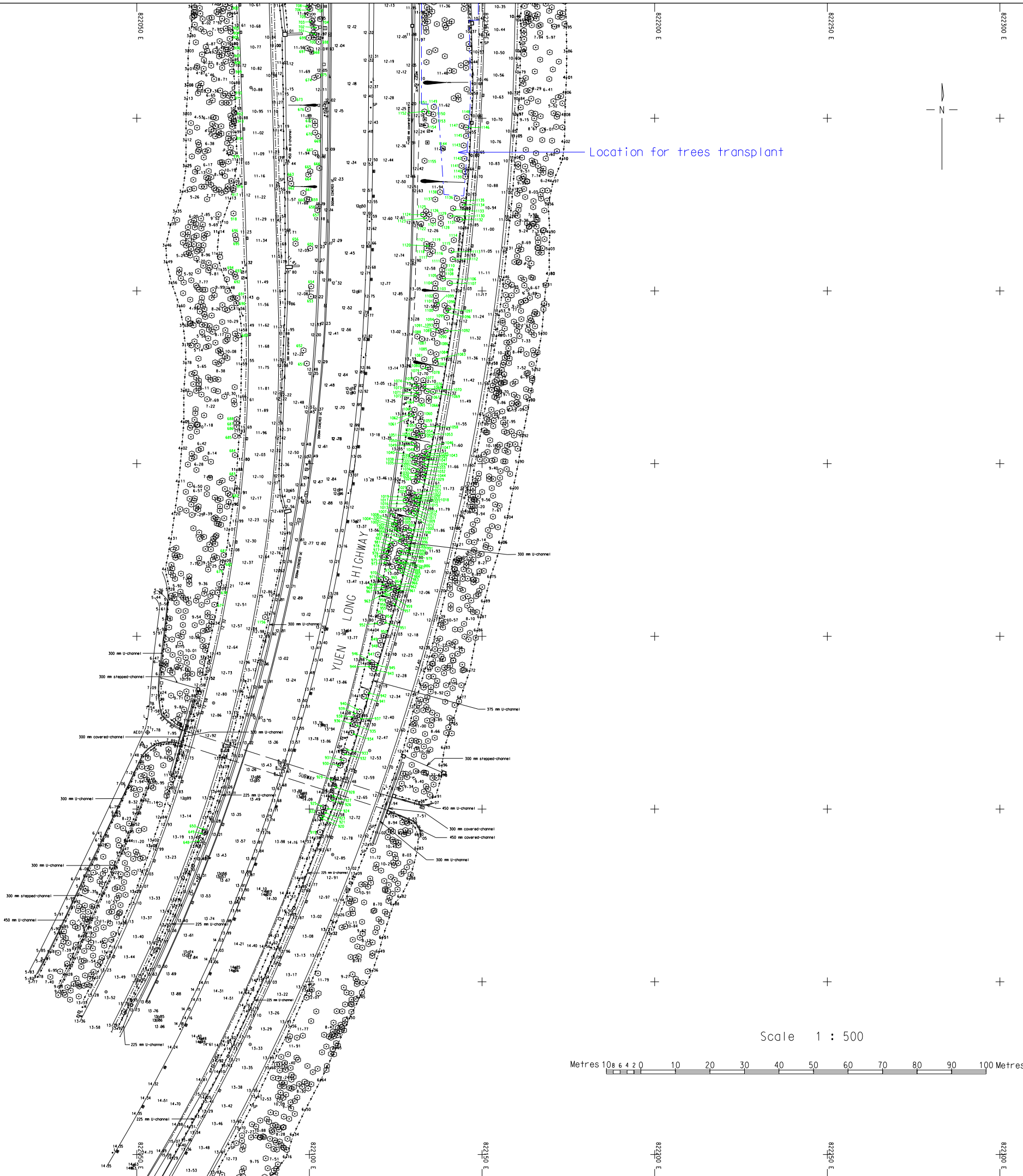
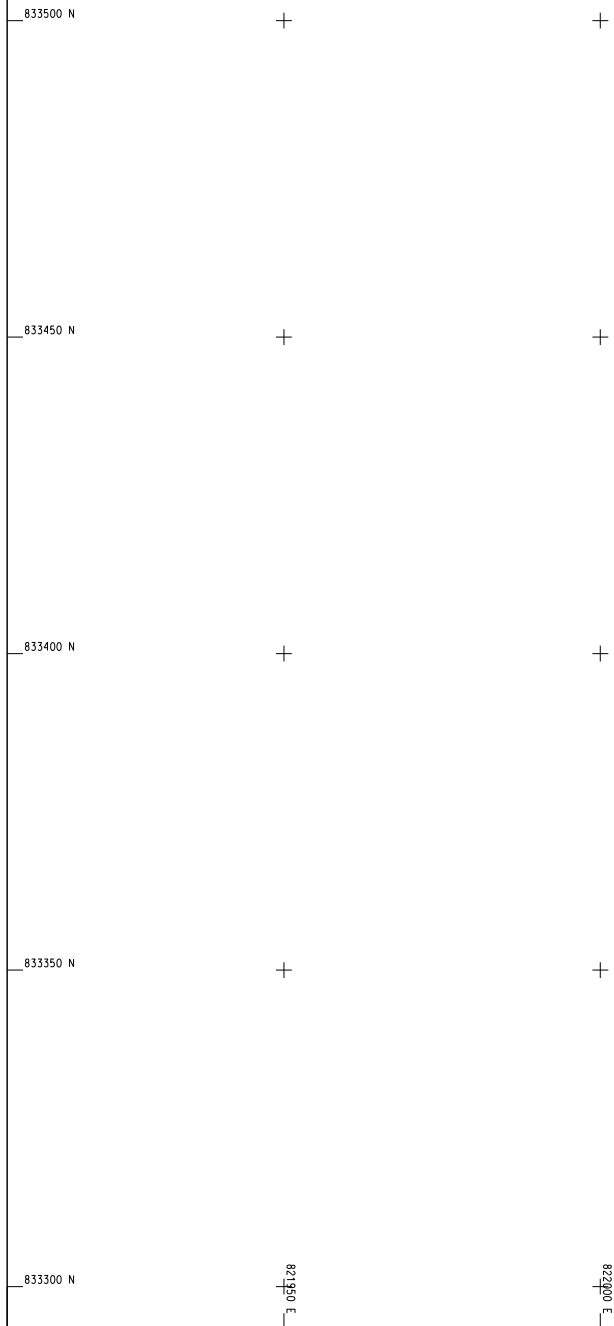
Big sign board	Bench
Ballard	Bench mark
Bus shelter	Column
Catch pit	Electric pole
Elect. transformer	Fence/Railing
Fire hydrant	Gate
Gas pipe	Grating
Gully	Grove
Hoarding	Hedge
High water mark	Inspection chamber
Letter box	Lamp post
Milestone	Manhole storm water
Manhole foul water	Manhole
Monument/Sculpture	Manhole telephone
Manhole waterworks	Piezometer
Step channel	Soil nail
Sign pole	Stream
Small shrine	Sepic tank
Tree	Traffic light control box
Traffic light	Telephone kiosk
Valve	Telephone pole
Valve fire	Urn
Valve waterworks	Valve gas
Wall retaining	Well
Water main	Wall
Control station	Slope
Street Name Plate	

A	Additional Tree Survey on	DATE	INITIAL
no.	date	description	
REVISION			
	name	date	
surveyed	C.W.SUEN (SIGNED)	Jun-08	
designed			
drawn	C.W.SUEN (SIGNED)	Jun-08	
traced			
checked	W.M.LING (SIGNED)	27-06-08	
approved	(SIGNED) 27-06-08		T.M.LEUNG LS/ WT HK & K

contract no.	
file no.	
project no.	
contract	IMPROVEMENT TO POK OI INTERCHANGE
drawing title	TREE SURVEY
drawing no.	HSDWU2518-TS0004A (SHEET 1 OF 4)
scale	1:500
office	SURVEY SECTION / W(HK & K)
COPYRIGHT RESERVED	



KEY PLAN SCALE 1:5000



82200 E 82250 E 82300 E 82350 E 82400 E

83350 N 83350 N 83350 N 83350 N 83350 N

Scale 1 : 500

Metres 10 20 30 40 50 60 70 80 90 100 Metres

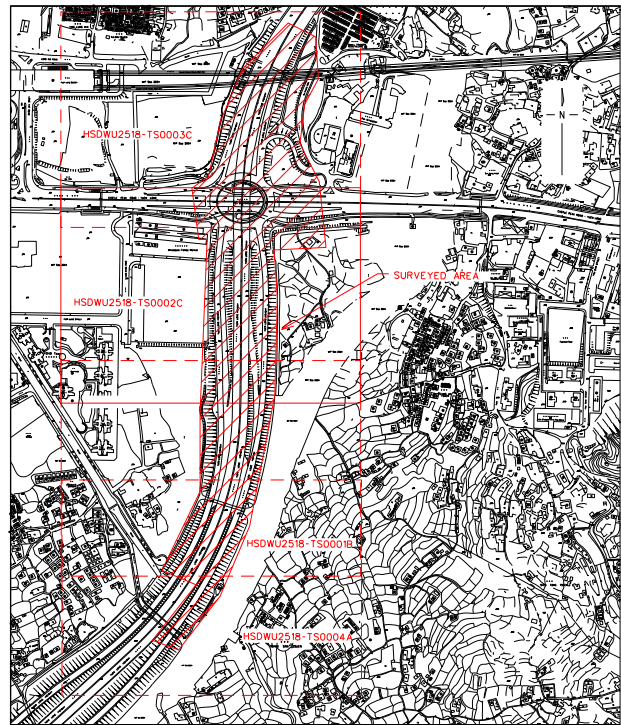
NOTES :

- ALL LEVELS ARE IN METRES ABOVE H.K.P.D.
- CO-ORDINATES ARE OF HONG KONG 1980 GRID SYSTEM.
- CO-ORDINATES OF LOWER LEFT SHEET CORNER: N: 833293; E: 821906; ROT. ANGLE : 0
- MODEL : HSD-WJ2518-P-B501C-E.DGN
- DRAWING FILE : HSDWJ2518-TS0001B.DGN
- JOB NO. : WJ/0236/08
- COMP. FOLDER : WJ2518111
- THIS DRAWING SUPERSEDES HSDWJ2518-TS0001A AND SHOULD BE READ IN CONJUNCTION WITH HSDWJ2518-TS0002C, HSDWJ2518-TS0003C & HSDWJ2518-TS0004A.
- 8-16 DENOTES LEVEL SHOWN UNDERNEATH THE SUBWAY.

LEGEND

Big sign board	Bench
Bollard	Bench mark
Bus shelter	Cable duct
Catch pit	Electric pole
Elect. transformer	Fence/Railing
Fire hydrant	Gate
Gas pipe	Grating
Gully	Grave
Hoarding	Hedge
High water mark	Inspection chamber
Letter box	Lamp post
Milestone	Manhole storm water
Manhole foul water	Manhole
Monument/Sculpture	Manhole telephone
Manhole waterworks	Piezometer
Step channel	Soil nail
Sign pole	Stream
Small shrine	Septic tank
Tree	Traffic light control box
Traffic light	Telephone kiosk
Valve	Telephone pole
Valve fire	Urn
Valve waterworks	Valve gas
Wall retaining	Well
Water main	Wall
Control station	Slope
Street Name Plate	

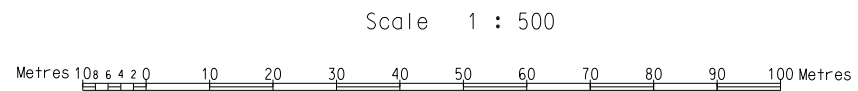
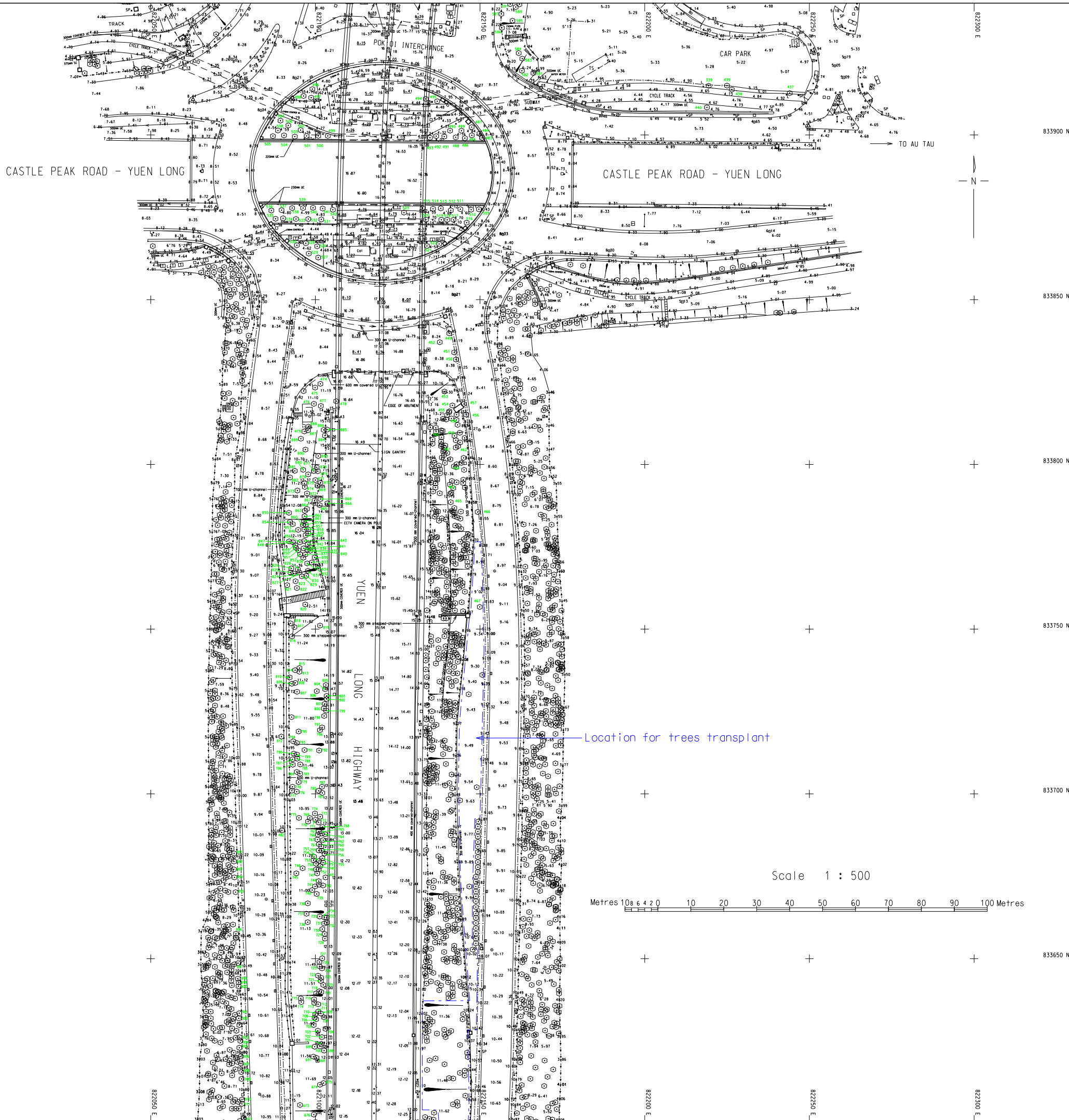
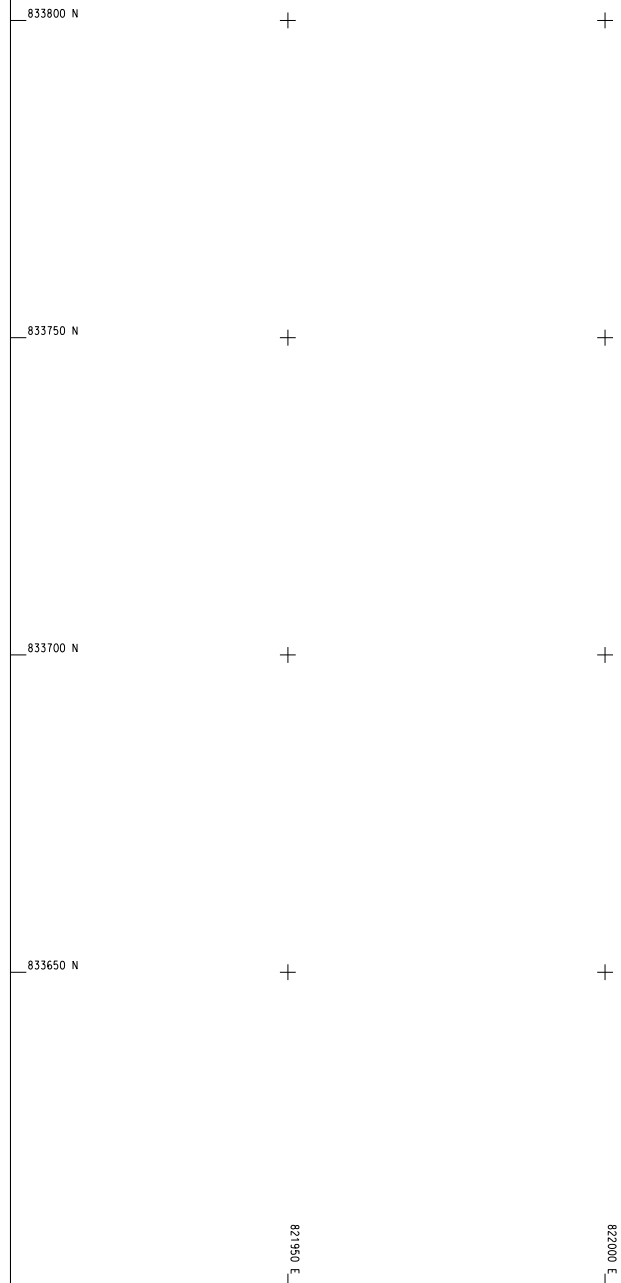
B	Additional Tree Survey on 23-09-2008	(SIGNED)	
A	Additional Tree Survey at Southward Portion of Yuen Long Highway	(SIGNED)	
no.	date	description	initial
REVISION			
	name	date	
surveyed	K.L.CHENG & W.Y.KAN (SIGNED)	Jul-07	
designed			
drawn	K.L.CHENG (SIGNED)	Sep-07	
traced			
checked	W.M.LING (SIGNED)	14-09-07	
approved	(SIGNED) 14-09-07	T.M.LEUNG LS / W (HK & K)	
contract no.			
file no.			
project no.			
contract			
IMPROVEMENT TO POK OI INTERCHANGE			
drawing title			
TREE SURVEY			
drawing no.	scale		
HSDWJ2518-TS0001B (SHEET 2 OF 4)	1:500		
office			
SURVEY SECTION / W (HK & K)			
COPYRIGHT RESERVED			
HIGHWAYS DEPARTMENT HONG KONG			



KEY PLAN SCALE 1:5000

CASTLE PEAK ROAD - YUEN LONG

CASTLE PEAK ROAD - YUEN LONG



- NOTES :
1. ALL LEVELS ARE IN METRES ABOVE H.K.P.D.
 2. CO-ORDINATES ARE OF HONG KONG 1980 GRID SYSTEM.
 3. CO-ORDINATES OF LOWER LEFT SHEET CORNER:
N: 833600; E: 821906; ROT. ANGLE : 0
 4. MODEL : HSD-WU2518-P-B501C-E.DGN
 5. DRAWING FILE : HSDWU2518-TS0002C.DGN
 6. JOB NO. : WU/0226/08
 7. COMP. FOLDER : WU2518 111
 8. THIS DRAWING SUPERSEDES HSDWU2518-TS0002B AND SHOULD BE READ IN CONJUNCTION WITH HSDWU2518-TS0001B, HSDWU2518-TS0003C & HSDWU2518-TS0004A.
 9. 8.16 DENOTES LEVEL SHOWN UNDERNEATH THE SUBWAY.

LEGEND

Big sign board	Bench
Bollard	Bench mark
Bus shelter	Cable duct
Catch pit	Electric pole
Elect. transformer	Fence/Railing
Fire hydrant	Gate
Gas pipe	Grating
Gully	Grove
Hoarding	Hedge
High water mark	Inspection chamber
Letter box	Lamp post
Milestone	Manhole storm water
Manhole foul water	Manhole
Monument/Sculpture	Manhole telephone
Manhole waterworks	Piezometer
Step channel	Soil nail
Sign pole	Stream
Small shrine	Septic tank
Tree	Traffic light control box
Traffic light	Telephone kiosk
Valve fire	Urn
Valve waterworks	Valve gas
Wall retaining	Well
Water main	Wall
Control station	Slope
Street Name Plate	

no.	date	description	initial
C	23-09-2008	Additional Tree Survey on	
B	27-06-08	Additional Tree Survey at Southward Portion of Yuen Long Highway	(SIGNED)
A	14-02-08	Additional Tree Survey at Interchange	(SIGNED)

REVISION

name	date
surveyed	K.L.CHENG & W.Y.KAN (SIGNED) Jul-07
designed	
drawn	K.L.CHENG (SIGNED) Sep-07
traced	
checked	W.M.LING (SIGNED) 14-09-07
approved	(SIGNED) 14-09-07 T.M.LEUNG LS / W (HK & K)

contract no.

file no.

project no.

contract

IMPROVEMENT TO POK OI INTERCHANGE

drawing title

TREE SURVEY

drawing no.

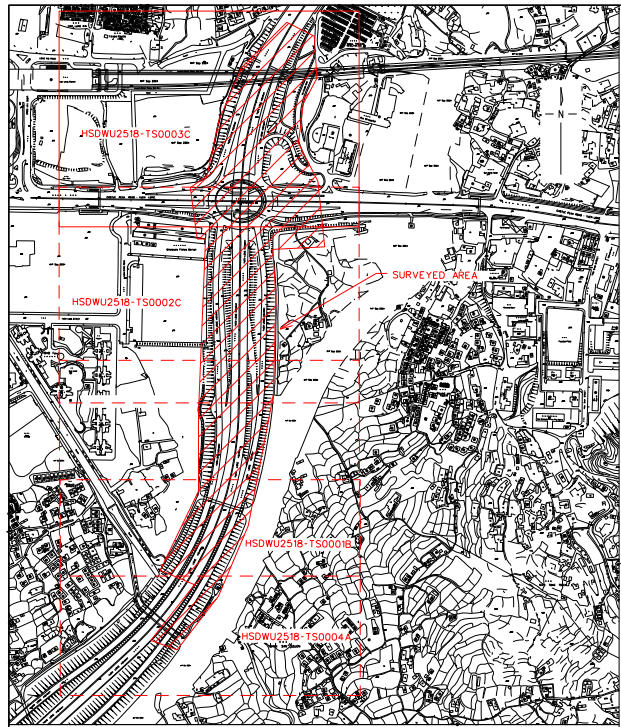
HSDWU2518-TS0002C (SHEET 3 OF 4)

scale

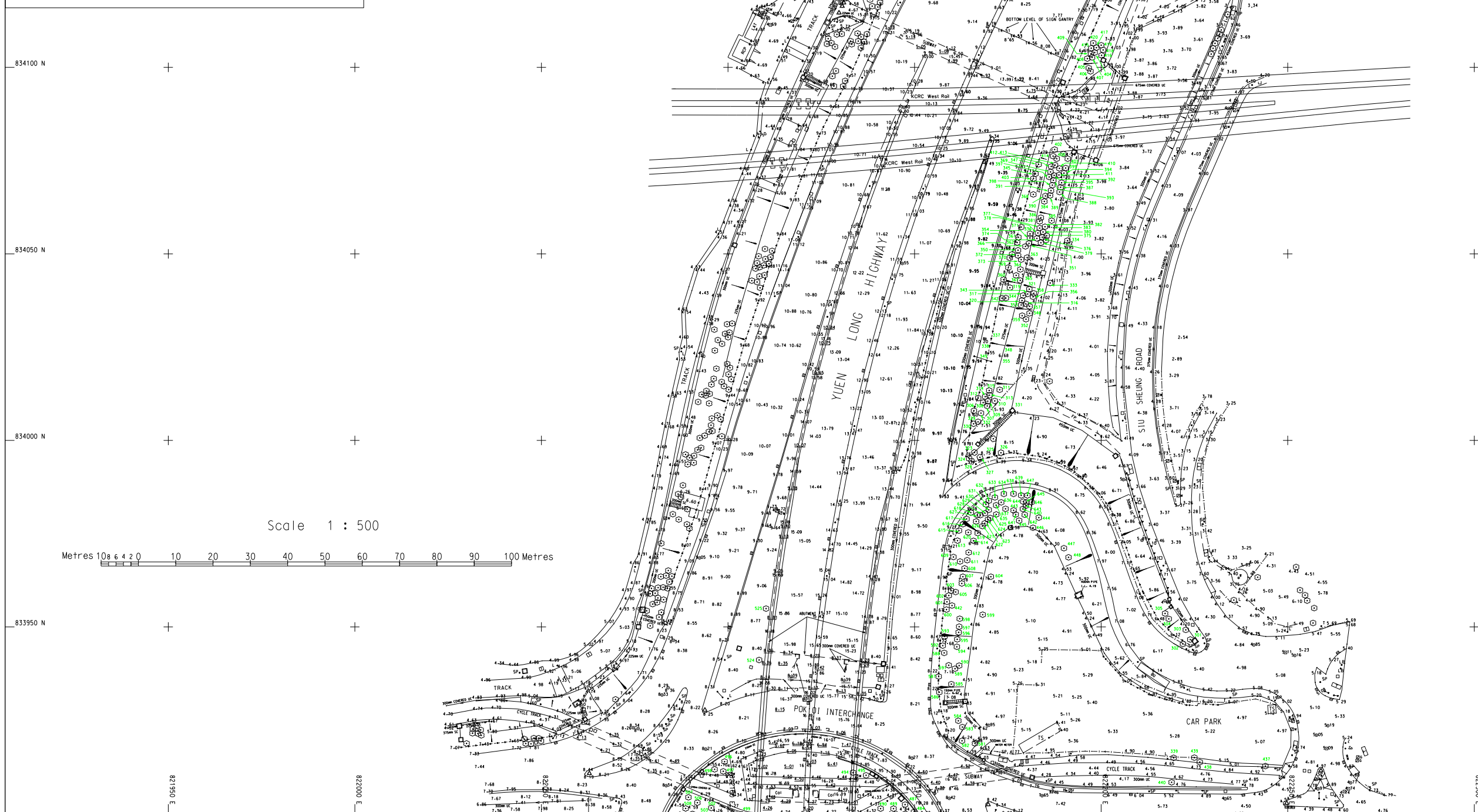
1:500

office

SURVEY SECTION / (WHK & K)



KEY PLAN SCALE 1:5000



Scale 1 : 500

Metres 10 20 30 40 50 60 70 80 90 100 Metres

- NOTES :
1. ALL LEVELS ARE IN METRES ABOVE H.K.P.D.
 2. CO-ORDINATES ARE OF HONG KONG 1980 GRID SYSTEM.
 3. CO-ORDINATES OF LOWER LEFT SHEET CORNER: N: 833900; E: 821964; ROT. ANGLE: 0
 4. MODEL: HSDWU2518-P-BS01C-E.DGN
 5. DRAWING FILE: HSDWU2518-TS0003C.DGN
 6. JOB NO.: WU/0226/08
 7. COMP. FOLDER: WU2518 III
 8. THIS DRAWING SUPERSEDES HSDWU2518-TS0003B AND SHOULD BE READ IN CONJUNCTION WITH HSDWU2518-TS0001B, HSDWU2518-TS0002C & HSDWU2518-TS0004A.
 9. B.L. DENOTES LEVEL SHOWN UNDERNEATH THE SUBWAY.

LEGEND

Big sign board	△	Bench	▽
Ballard	△	Bench mark	△
Bus shelter	□	Cable duct	—
Catch pit	□	Electric pole	—
Elect. transformer	□	Fence/Railing	—
Fire hydrant	□	Gate	—
Gas pipe	—	Grating	—
Gully	—	Grove	—
Hoarding	—	Hedge	—
High water mark	—	Inspection chamber	□
Letter box	□	Lamp post	□
Milestone	□	Manhole storm water	□
Manhole foul water	□	Manhole	□
Monument/Sculpture	□	Manhole telephone	□
Manhole waterworks	□	Piezometer	□
Step channel	—	Sill nail	—
Sign pole	—	Stream	—
Small shrine	□	Septic tank	□
Tree	□	Traffic light control box	□
Traffic light	□	Telephone kiosk	□
Valve	□	Telephone pole	□
Valve fire	□	Urn	□
Valve waterworks	□	Valve gas	□
Wall retaining	—	Wall	—
Water main	—	Wall	—
Control station	□	Slope	—
Street Name Plate	—		

no.	date	description	initial
C	27-06-08	Additional Tree Survey on Southward Portion of Yuen Long Highway	(SIGNED)
B	14-02-08	Additional Tree Survey at Interchange	(SIGNED)

REVISION

no.	name	date
surveyed	K.L.CHENG & W.Y.KAN (SIGNED)	Jul-07
designed		
drawn	K.L.CHENG (SIGNED)	Sep-07
traced		
checked	W.M.LING (SIGNED)	14-09-07
approved	(SIGNED) 14-09-07 T.M.LEUNG LS / W (HK & K)	

contract no.
file no.
project no.
contract
IMPROVEMENT TO POK OI INTERCHANGE

drawing title
TREE SURVEY

drawing no. HSDWU2518-TS0003C (SHEET 4 OF 4)	scale 1:500
office SURVEY SECTION / W (HK & K)	

