

KEY PLAN



		Con	Oper
Unmitigated	Negligible	Negligible	
	Mitigated	Negligible	

LCA14

		Con	Oper
Unmitigated	Moderate	Moderate	
	Mitigated	Moderate	
			Slight

LCA5

LCA6

		Con	Oper
Unmitigated	Slight	Slight	
	Mitigated	Slight	
			Negligible

LCA4

		Con	Oper
Unmitigated	Slight	Slight	
	Mitigated	Slight	
			Negligible

LCA15

		Con	Oper
Unmitigated	Negligible	Negligible	
	Mitigated	Negligible	

LCA3

		Con	Oper
Unmitigated	Slight	Slight	
	Mitigated	Slight	
			Negligible

LCA2

		Con	Oper
Unmitigated	Moderate	Moderate	
	Mitigated	Moderate	
			Slight

LCA1

		Con	Oper
Unmitigated	Moderate	Moderate	
	Mitigated	Moderate	
			Slight

- LCA1 Tam Kon Chau Lowland Rural Landscape
- LCA2 Mai Po Lowland Rural Landscape
- LCA3 Lok Ma Chau Cross-border Infrastructure and Facilities Landscape
- LCA4 Lok Ma Chau Lowland Rural Landscape
- LCA5 Sam Po Shue Lowland Rural Landscape
- LCA6 Lo Wu Cross-border Infrastructure and Facilities Landscape

- LCA7 Sandy Range Hillside Landscape
- LCA8 Man Kam To Road Cross-border Infrastructure and Facilities Landscape
- LCA9 North Ta Kwu Ling Lowland Rural Landscape
- LCA10 Lin Ma Hang Hillside Landscape
- LCA11 Shenzhen Liantang High-rise Residential Landscape
- LCA12 Shenzhen Wenjandu Port Infrastructure and Facilities
- LCA13 Shenzhen Lo Wu Cross-border Infrastructure and Facilities Landscape
- LCA14 Shenzhen Huanggang Cross-border Infrastructure and Facilities Landscape
- LCA15 Shenzhen Futian Industrial Landscape
- LCA16 Sha Tau Kok Rural Landscape

### Legend

- 500M Study Area
- Frontier Closed Area
- LCA boundary
- Proposed secondary boundary fence along existing boundary patrol road
- Proposed new boundary patrol road with primary and secondary boundary fences
- Existing boundary fence to be removed
- Existing check point to be removed
- Proposed new check point

### Landscape Impacts

	Construction	Operation
Unmitigated	Slight Adverse	Moderate Adverse
Mitigated	Slight Beneficial	Negligible

Rev	Date	Drawn	Description	Ch'k'd	App'd

Client: ARCHITECTURAL SERVICES DEPARTMENT

Mott MacDonald Hong Kong Limited  
7th Floor  
West Wing Office Building  
New World Centre  
20 Salisbury Road  
Hong Kong  
Tel: 2828 5757  
Fax: 2827 1823  
Web: www.mottmac.com.hk

Project: CONSTRUCTION OF A SECONDARY BOUNDARY FENCE AND NEW SECTIONS OF PRIMARY BOUNDARY FENCE AND BOUNDARY PATROL ROAD

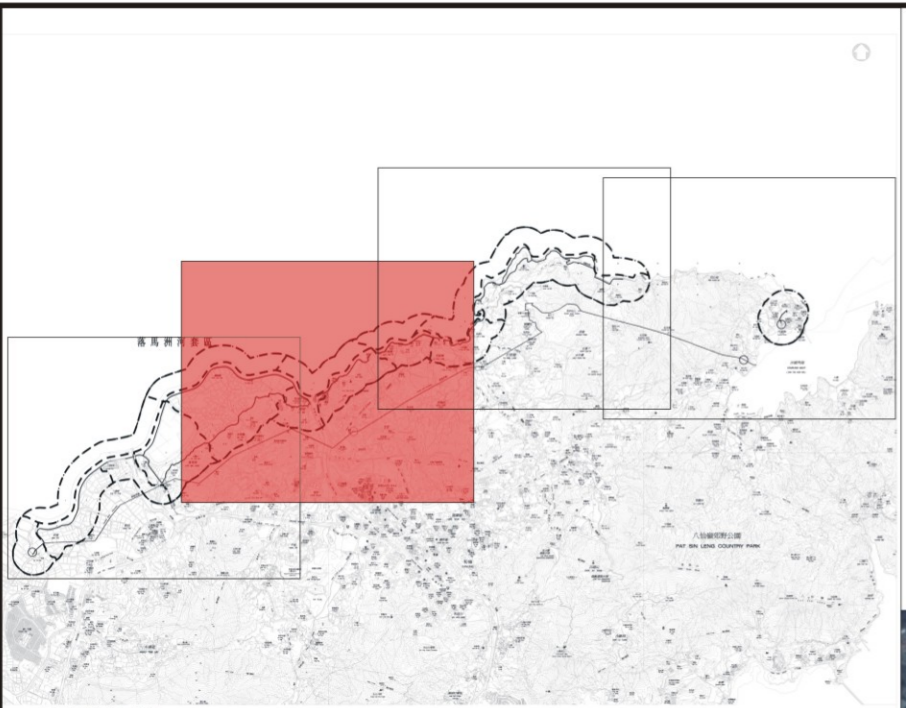
Title: Landscape Character Areas and Impacts

Designed	TEAM	Eng.Chk.	---
Drawn	EIK	Coordination	---
Dwg.Chk.	ELK	Approved	CJF
Scale	As Shown	Project	216727
		CAD File	---
Drawing No.	Figure 7-3A	Status	A

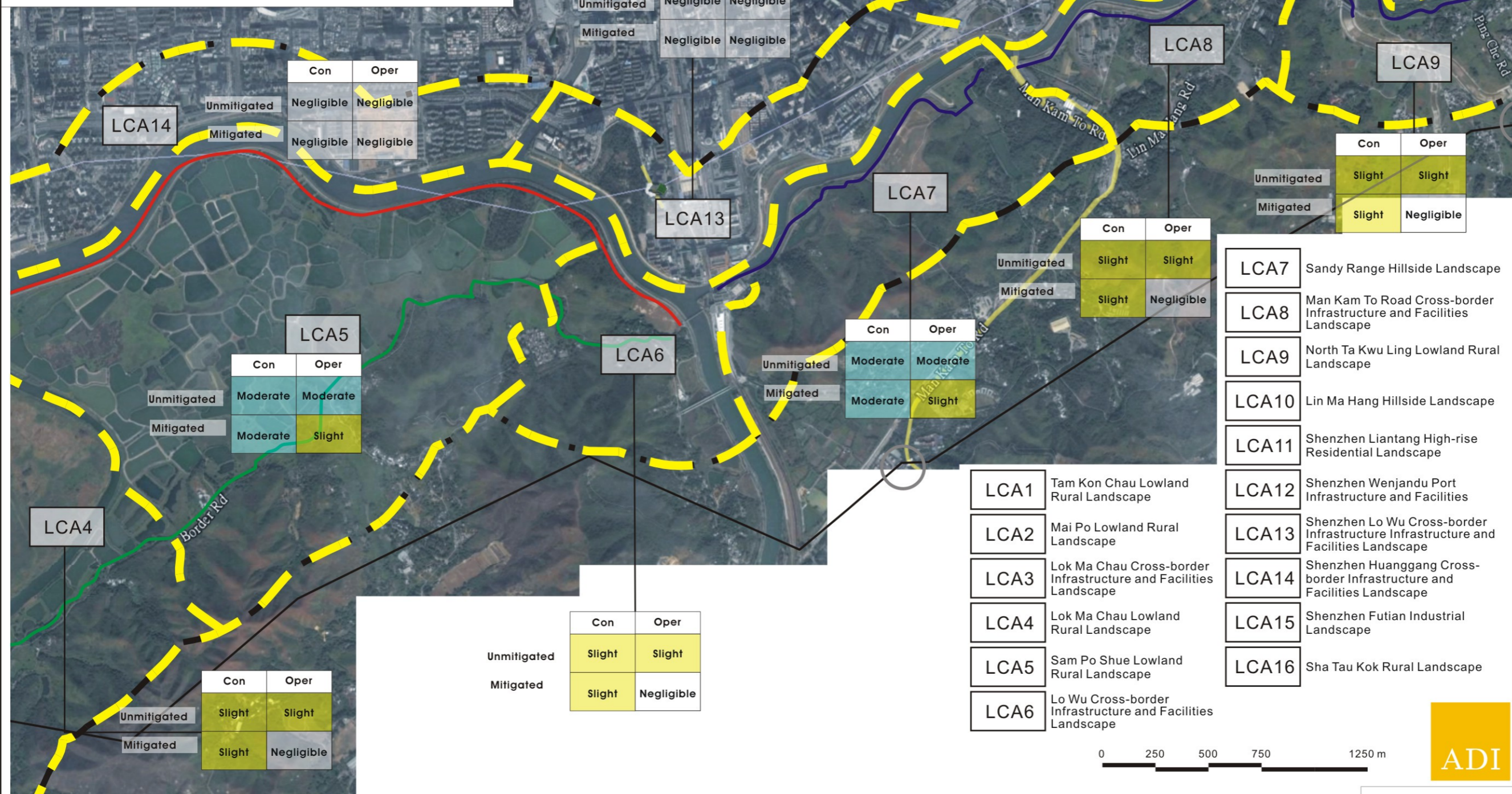


© COPYRIGHT RESERVED

This document should not be relied on or used in circumstances other than those for which it was originally prepared and for which Mott MacDonald Hong Kong Limited was commissioned. Mott MacDonald Hong Kong Limited accepts no responsibility for this document to any other party than the person by whom it was commissioned.



KEY PLAN



### Legend

- 500M Study Area
- Frontier Closed Area
- LCA boundary
- Proposed secondary boundary fence along existing boundary patrol road
- Proposed new boundary patrol road with primary and secondary boundary fences
- Existing boundary fence to be removed
- Existing check point to be removed
- Proposed new check point

### Landscape Impacts

	Construction	Operation
Unmitigated	Slight Adverse	Moderate Adverse
Mitigated	Slight Beneficial	Negligible

Rev	Date	Drawn	Description	Ch'kd	App'd



Mott MacDonald Hong Kong Limited  
 7th Floor  
 West Wing Office Building  
 New World Centre  
 20 Salisbury Road  
 Hong Kong  
 Tel: 2828 5757  
 Fax: 2827 1823  
 Web: www.mottmac.com.hk

Project: CONSTRUCTION OF A SECONDARY BOUNDARY FENCE AND NEW SECTIONS OF PRIMARY BOUNDARY FENCE AND BOUNDARY PATROL ROAD

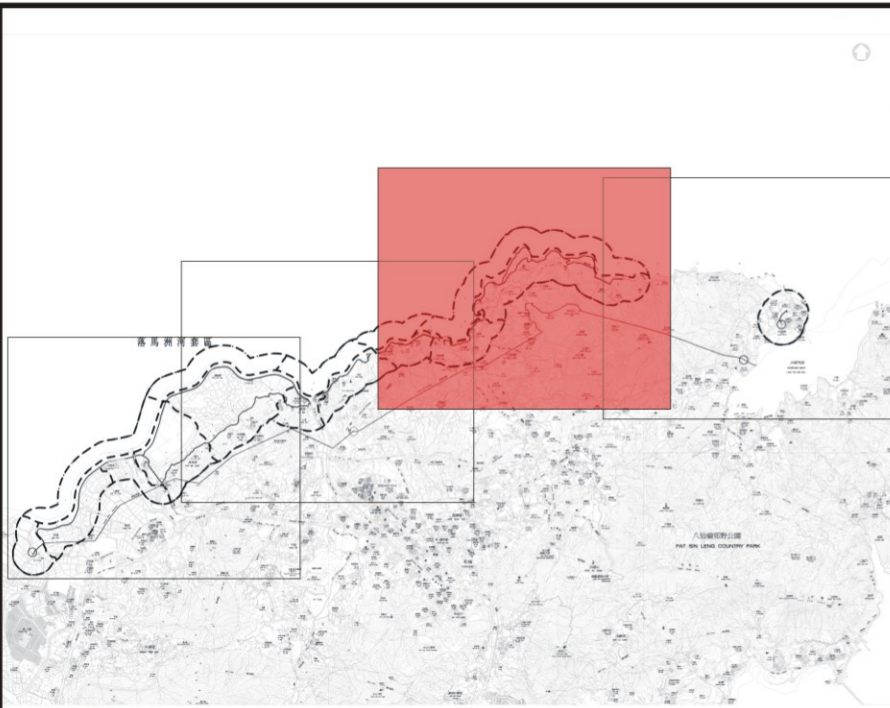
Title: Landscape Character Areas and Impacts

Designed	TEAM	Eng.Chk.	---	
Drawn	EIK	Coordination	---	
Dwg.Chk.	ELK	Approved	CJF	
Scale	As Shown	Project	216727	Status
		CAD File	---	
Drawing No.				Rev
				A

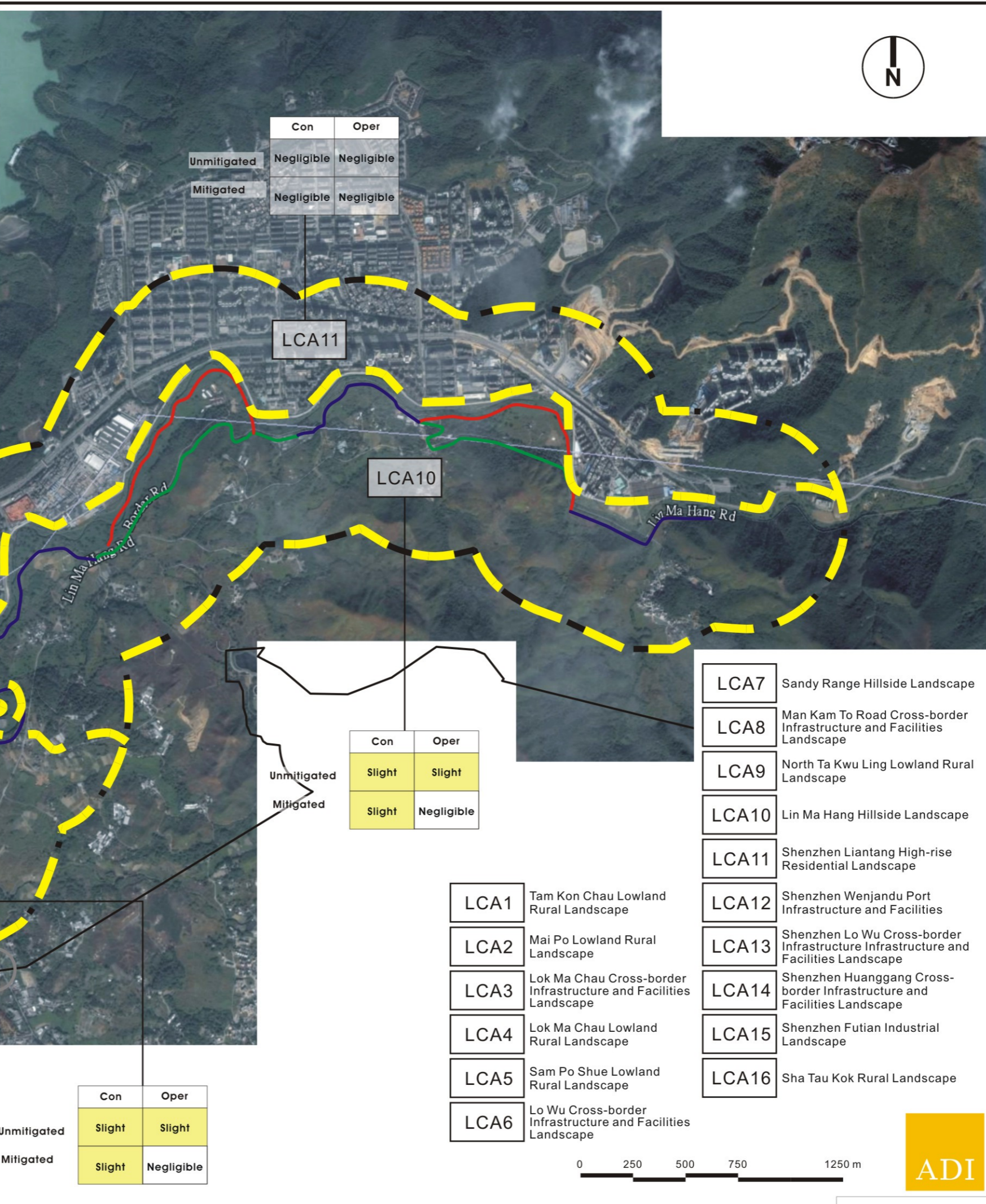


© COPYRIGHT RESERVED

This document should not be relied on or used in circumstances other than those for which it was originally prepared and for which Mott MacDonald Hong Kong Limited was commissioned. Mott MacDonald Hong Kong Limited accepts no responsibility for this document to any other party than the person by whom it was commissioned.



KEY PLAN



### Legend

- 500M Study Area
- Frontier Closed Area
- LCA boundary
- Proposed secondary boundary fence along existing boundary patrol road
- Proposed new boundary patrol road with primary and secondary boundary fences
- Existing boundary fence to be removed
- Existing check point to be removed
- Proposed new check point

### Landscape Impacts

	Construction	Operation
Unmitigated	Slight Adverse	Moderate Adverse
Mitigated	Slight Beneficial	Negligible

Rev	Date	Drawn	Description	Ch'kd	App'd



**Mott MacDonald**  
 Mott MacDonald Hong Kong Limited  
 7th Floor  
 West Wing Office Building  
 New World Centre  
 20 Salisbury Road  
 Hong Kong  
 Tel: 2828 5757  
 Fax: 2827 1823  
 Web: www.mottmac.com.hk

Project: CONSTRUCTION OF A SECONDARY BOUNDARY FENCE AND NEW SECTIONS OF PRIMARY BOUNDARY FENCE AND BOUNDARY PATROL ROAD

Title: Landscape Character Areas and Impacts

Designed	TEAM	Eng.Chk.	---	
Drawn	EIK	Coordination	---	
Dwg.Chk.	ELK	Approved	CJF	
Scale	As Shown	Project	216727	Status
Drawing No.	Figure 7-3C	CAD File	---	Rev
				A

	Con	Oper
Unmitigated	Negligible	Negligible
Mitigated	Negligible	Negligible

LCA11

LCA10

	Con	Oper
Unmitigated	Slight	Slight
Mitigated	Slight	Negligible

- LCA7 Sandy Range Hillside Landscape
- LCA8 Man Kam To Road Cross-border Infrastructure and Facilities Landscape
- LCA9 North Ta Kwu Ling Lowland Rural Landscape
- LCA10 Lin Ma Hang Hillside Landscape
- LCA11 Shenzhen Liantang High-rise Residential Landscape
- LCA12 Shenzhen Wenjandu Port Infrastructure and Facilities
- LCA13 Shenzhen Lo Wu Cross-border Infrastructure and Facilities Landscape
- LCA14 Shenzhen Huanggang Cross-border Infrastructure and Facilities Landscape
- LCA15 Shenzhen Futian Industrial Landscape
- LCA16 Sha Tau Kok Rural Landscape

- LCA1 Tam Kon Chau Lowland Rural Landscape
- LCA2 Mai Po Lowland Rural Landscape
- LCA3 Lok Ma Chau Cross-border Infrastructure and Facilities Landscape
- LCA4 Lok Ma Chau Lowland Rural Landscape
- LCA5 Sam Po Shue Lowland Rural Landscape
- LCA6 Lo Wu Cross-border Infrastructure and Facilities Landscape

	Con	Oper
Unmitigated	Negligible	Negligible
Mitigated	Negligible	Negligible

LCA12

LCA9

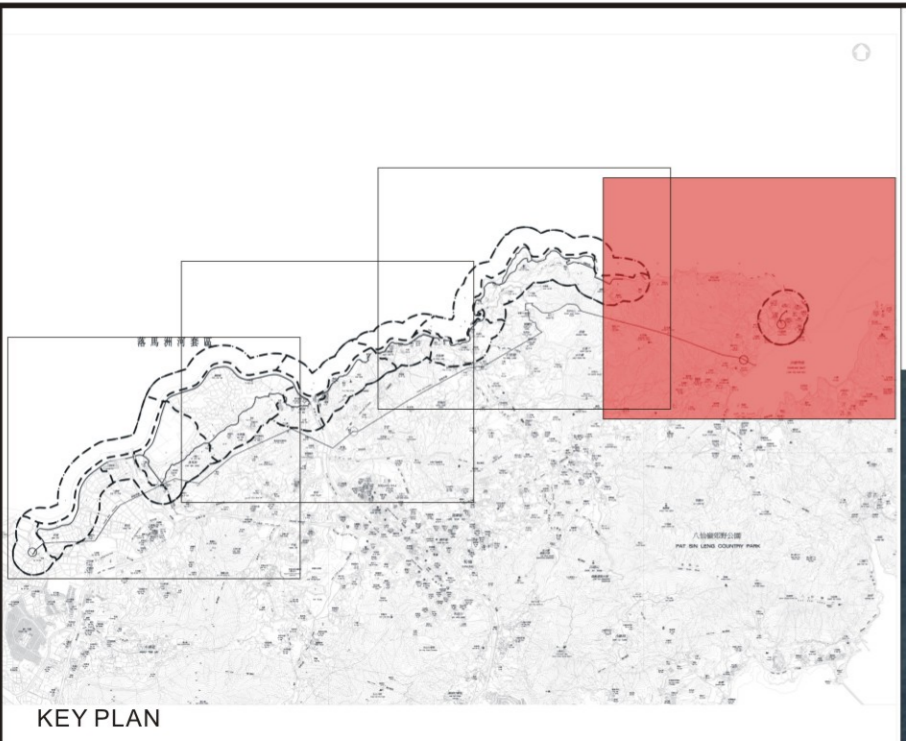
	Con	Oper
Unmitigated	Slight	Slight
Mitigated	Slight	Negligible

	Con	Oper
Unmitigated	Slight	Slight
Mitigated	Slight	Negligible



This document should not be relied on or used in circumstances other than those for which it was originally prepared and for which Mott MacDonald Hong Kong Limited was commissioned. Mott MacDonald Hong Kong Limited accepts no responsibility for this document to any other party than the person by whom it was commissioned.

© COPYRIGHT RESERVED

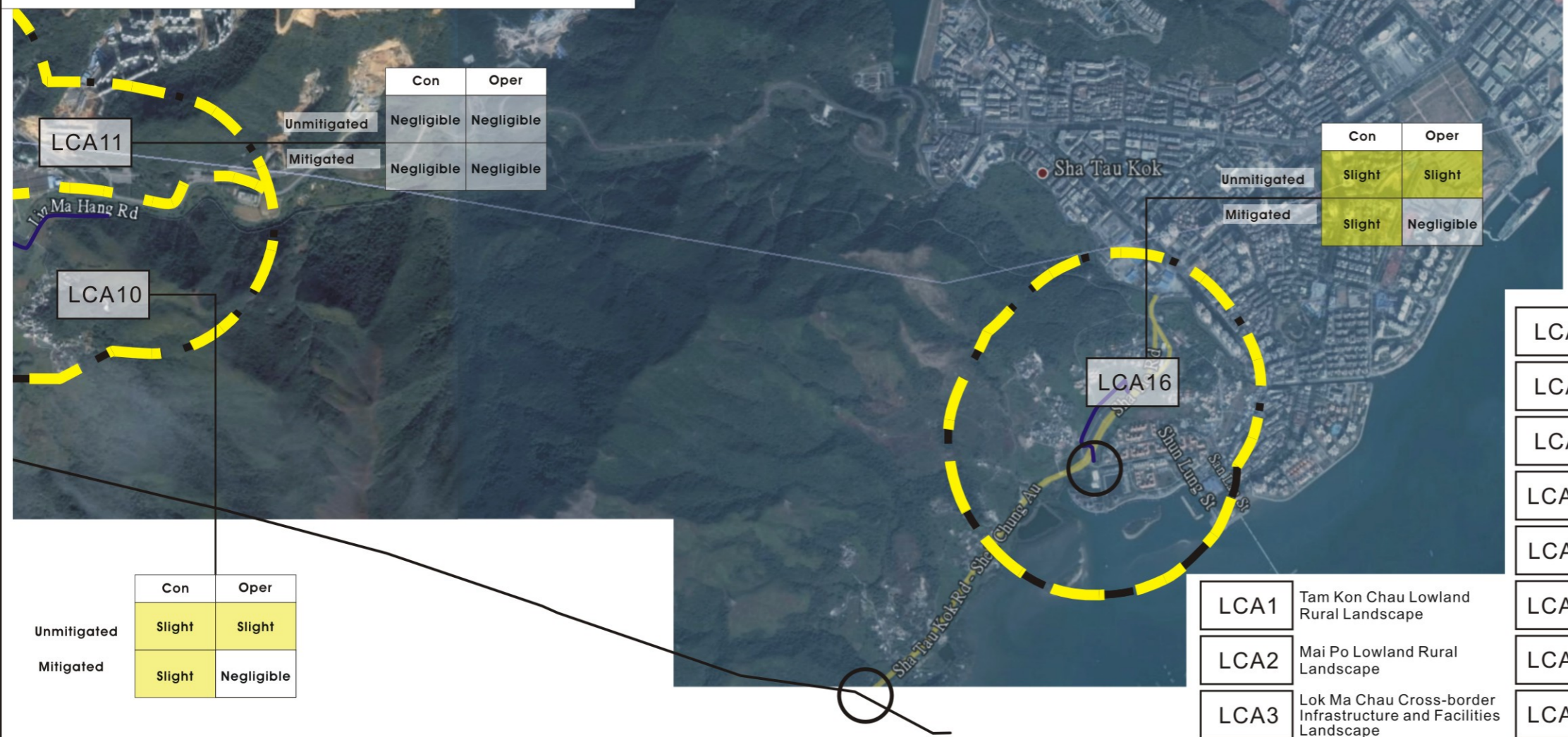


KEY PLAN



**Legend**

- 500M Study Area
- Frontier Closed Area
- LCA boundary
- Proposed secondary boundary fence along existing boundary patrol road
- Proposed new boundary patrol road with primary and secondary boundary fences
- Existing boundary fence to be removed
- Existing check point to be removed
- Proposed new check point



	Con	Oper
Unmitigated	Negligible	Negligible
Mitigated	Negligible	Negligible

	Con	Oper
Unmitigated	Slight	Slight
Mitigated	Slight	Negligible

	Con	Oper
Unmitigated	Slight	Slight
Mitigated	Slight	Negligible

**Landscape Impacts**

	Construction	Operation
Unmitigated	Slight Adverse	Moderate Adverse
Mitigated	Slight Beneficial	Negligible

- LCA7 Sandy Range Hillside Landscape
- LCA8 Man Kam To Road Cross-border Infrastructure and Facilities Landscape
- LCA9 North Ta Kwu Ling Lowland Rural Landscape
- LCA10 Lin Ma Hang Hillside Landscape
- LCA11 Shenzhen Liantang High-rise Residential Landscape
- LCA12 Shenzhen Wenjandu Port Infrastructure and Facilities
- LCA13 Shenzhen Lo Wu Cross-border Infrastructure Infrastructure and Facilities Landscape
- LCA14 Shenzhen Huanggang Cross-border Infrastructure and Facilities Landscape
- LCA15 Shenzhen Futian Industrial Landscape
- LCA16 Sha Tau Kok Rural Landscape

- LCA1 Tam Kon Chau Lowland Rural Landscape
- LCA2 Mai Po Lowland Rural Landscape
- LCA3 Lok Ma Chau Cross-border Infrastructure and Facilities Landscape
- LCA4 Lok Ma Chau Lowland Rural Landscape
- LCA5 Sam Po Shue Lowland Rural Landscape
- LCA6 Lo Wu Cross-border Infrastructure and Facilities Landscape

Rev	Date	Drawn	Description	Ch'k'd	App'd
Client					



**Mott MacDonald**  
 Mott MacDonald Hong Kong Limited  
 7th Floor  
 West Wing Office Building  
 New World Centre  
 20 Salisbury Road  
 Hong Kong  
 Tel: 2828 5757  
 Fax: 2827 1823  
 Web: www.mottmac.com.hk

Project  
 CONSTRUCTION OF A SECONDARY BOUNDARY FENCE AND NEW SECTIONS OF PRIMARY BOUNDARY FENCE AND BOUNDARY PATROL ROAD

Title  
 Landscape Character Areas and Impacts

Designed	TEAM	Eng.Chk.	---
Drawn	EIK	Coordination	---
Dwg.Chk.	ELK	Approved	CJF
Scale	As Shown	Project	216727
		CAD File	---
Drawing No.	Figure 7-3D		Rev
			A



© COPYRIGHT RESERVED

This document should not be relied on or used in circumstances other than those for which it was originally prepared and for which Mott MacDonald Hong Kong Limited was commissioned. Mott MacDonald Hong Kong Limited accepts no responsibility for this document to any other party than the person by whom it was commissioned.