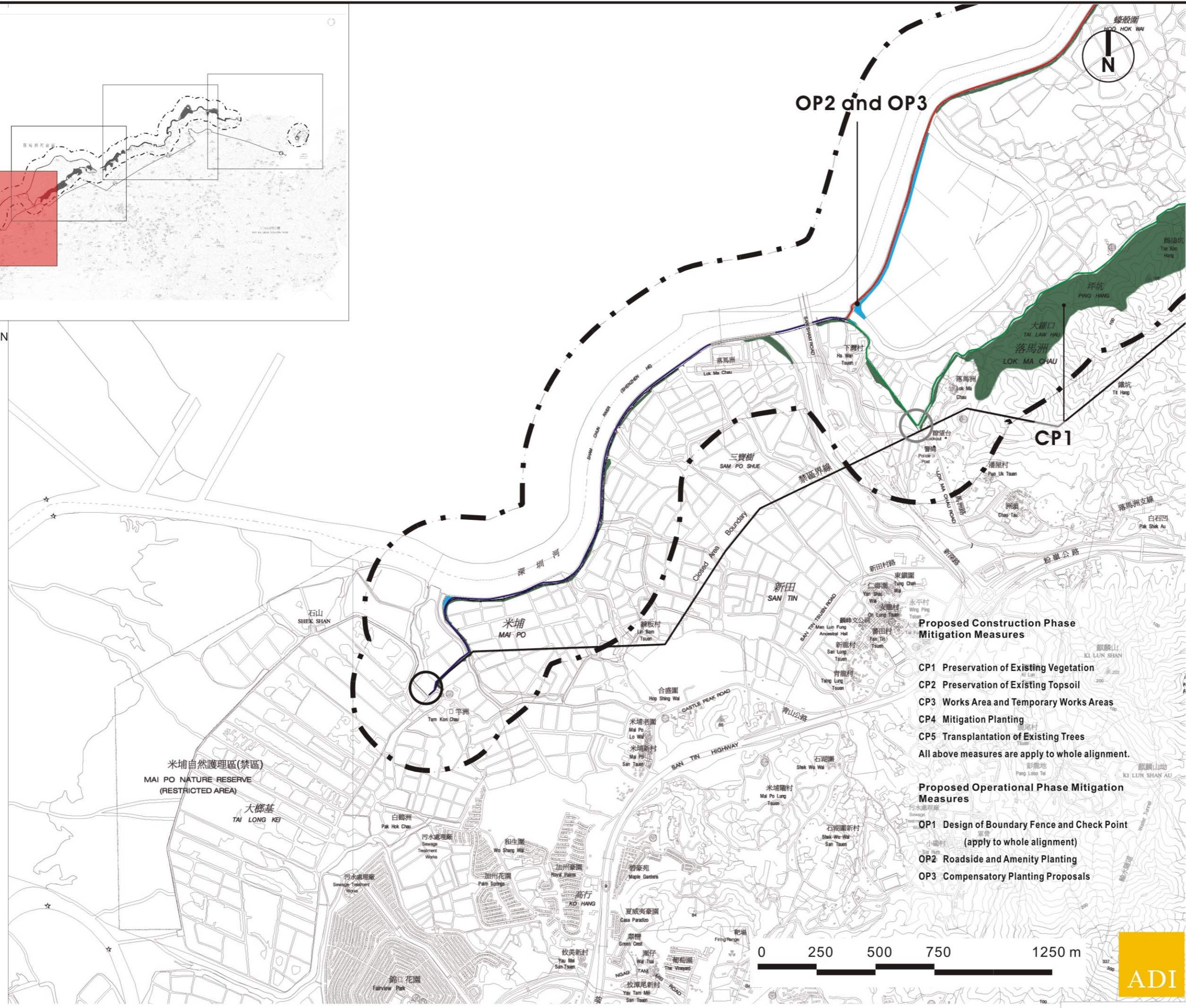


KEY PLAN



- Legend**
- 500M Study Area
 - Frontier Closed Area
 - Proposed secondary boundary fence along existing boundary patrol road
 - Proposed new boundary patrol road with primary and secondary boundary fences
 - Existing boundary fence to be removed
 - Existing check point to be removed
 - Proposed new check point
 - Existing Mature Vegetation to be preserved
 - Potential Location for Compensatory and Screening Planting
 - CP1** Mitigation Code of Recommended Mitigation Measures

- Proposed Construction Phase Mitigation Measures**
- CP1 Preservation of Existing Vegetation
 - CP2 Preservation of Existing Topsoil
 - CP3 Works Area and Temporary Works Areas
 - CP4 Mitigation Planting
 - CP5 Transplantation of Existing Trees
- All above measures are apply to whole alignment.

- Proposed Operational Phase Mitigation Measures**
- OP1 Design of Boundary Fence and Check Point (apply to whole alignment)
 - OP2 Roadside and Amenity Planting
 - OP3 Compensatory Planting Proposals



Rev	Date	Drawn	Description	Ch'k'd	App'd
Client					



Mott MacDonald
 Mott MacDonald Hong Kong Limited
 7th Floor
 West Wing Office Building
 New World Centre
 20 Salisbury Road
 Hong Kong
 Tel 2828 5757
 Fax 2827 1823
 Web www.mottmac.com.hk

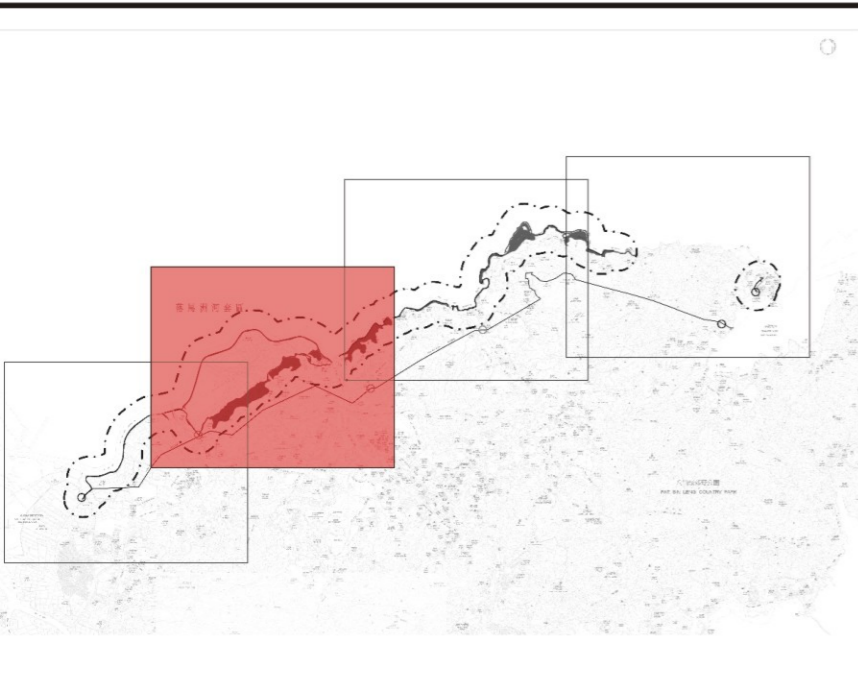
Project
 CONSTRUCTION OF A SECONDARY BOUNDARY FENCE AND NEW SECTIONS OF PRIMARY BOUNDARY FENCE AND BOUNDARY PATROL ROAD

Title
 Recommended Landscape Mitigation Measures

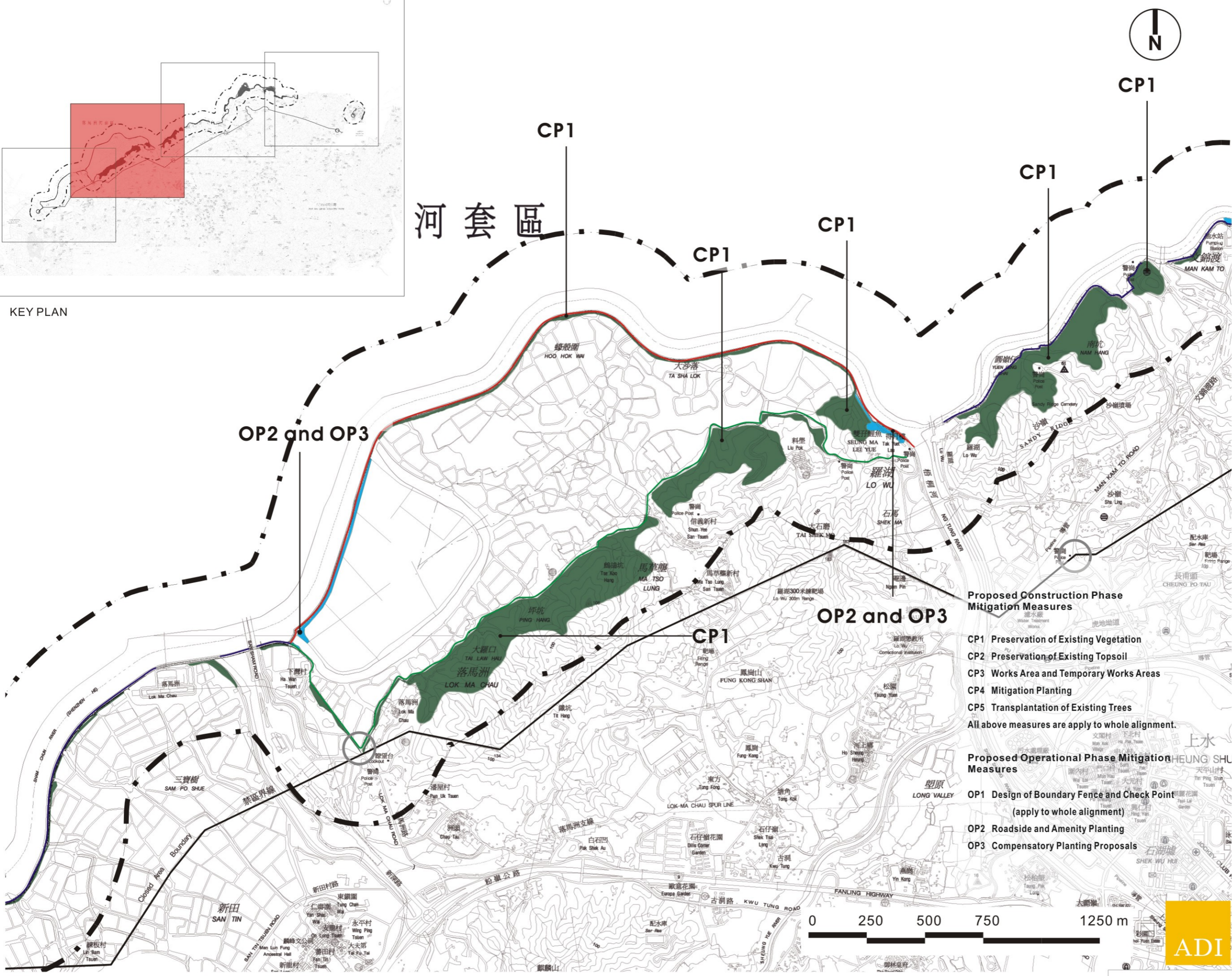
Designed	TEAM	Eng.Chk.	---
Drawn	EIK	Coordination	---
Dwg.Chk.	ELK	Approved	CJF
Scale	N.T.S.	Project	216727
		CAD File	---
Drawing No.	Figure 7-8A	Status	Rev

This document should not be relied on or used in circumstances other than those for which it was originally prepared and for which Mott MacDonald Hong Kong Limited was commissioned. Mott MacDonald Hong Kong Limited accepts no responsibility for this document to any other party than the person by whom it was commissioned.

© COPYRIGHT RESERVED



KEY PLAN



CP1

CP1

CP1

CP1

CP1

OP2 and OP3

OP2 and OP3

CP1

Proposed Construction Phase Mitigation Measures

- CP1 Preservation of Existing Vegetation
 - CP2 Preservation of Existing Topsoil
 - CP3 Works Area and Temporary Works Areas
 - CP4 Mitigation Planting
 - CP5 Transplantation of Existing Trees
- All above measures are apply to whole alignment.

Proposed Operational Phase Mitigation Measures

- OP1 Design of Boundary Fence and Check Point
(apply to whole alignment)
- OP2 Roadside and Amenity Planting
- OP3 Compensatory Planting Proposals



Legend

- 500M Study Area
- Frontier Closed Area
- Proposed secondary boundary fence along existing boundary patrol road
- Proposed new boundary patrol road with primary and secondary boundary fences
- Existing boundary fence to be removed
- Existing check point to be removed
- Proposed new check point
- Existing Mature Vegetation to be preserved
- Potential Location for Compensatory and Screening Planting
- CP1** Mitigation Code of Recommended Mitigation Measures

Rev	Date	Drawn	Description	Ch'k'd	App'd



Mott MacDonald
Mott MacDonald Hong Kong Limited
7th Floor
West Wing Office Building
New World Centre
20 Solihury Road
Hong Kong
Tel 2828 5757
Fax 2827 1823
Web www.mottmac.com.hk

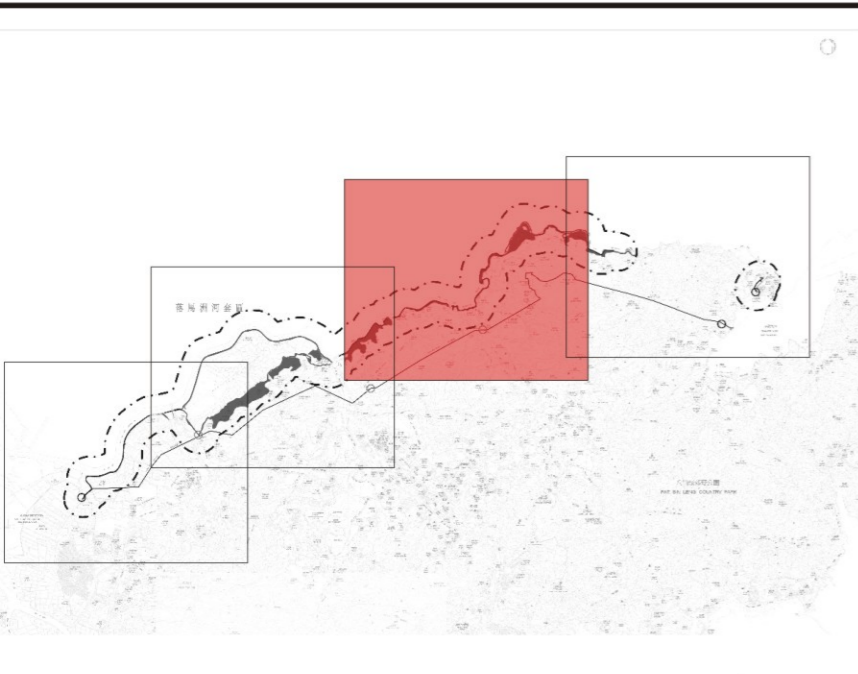
Project
CONSTRUCTION OF A SECONDARY BOUNDARY FENCE AND NEW SECTIONS OF PRIMARY BOUNDARY FENCE AND BOUNDARY PATROL ROAD

Title
Recommended Landscape Mitigation Measures

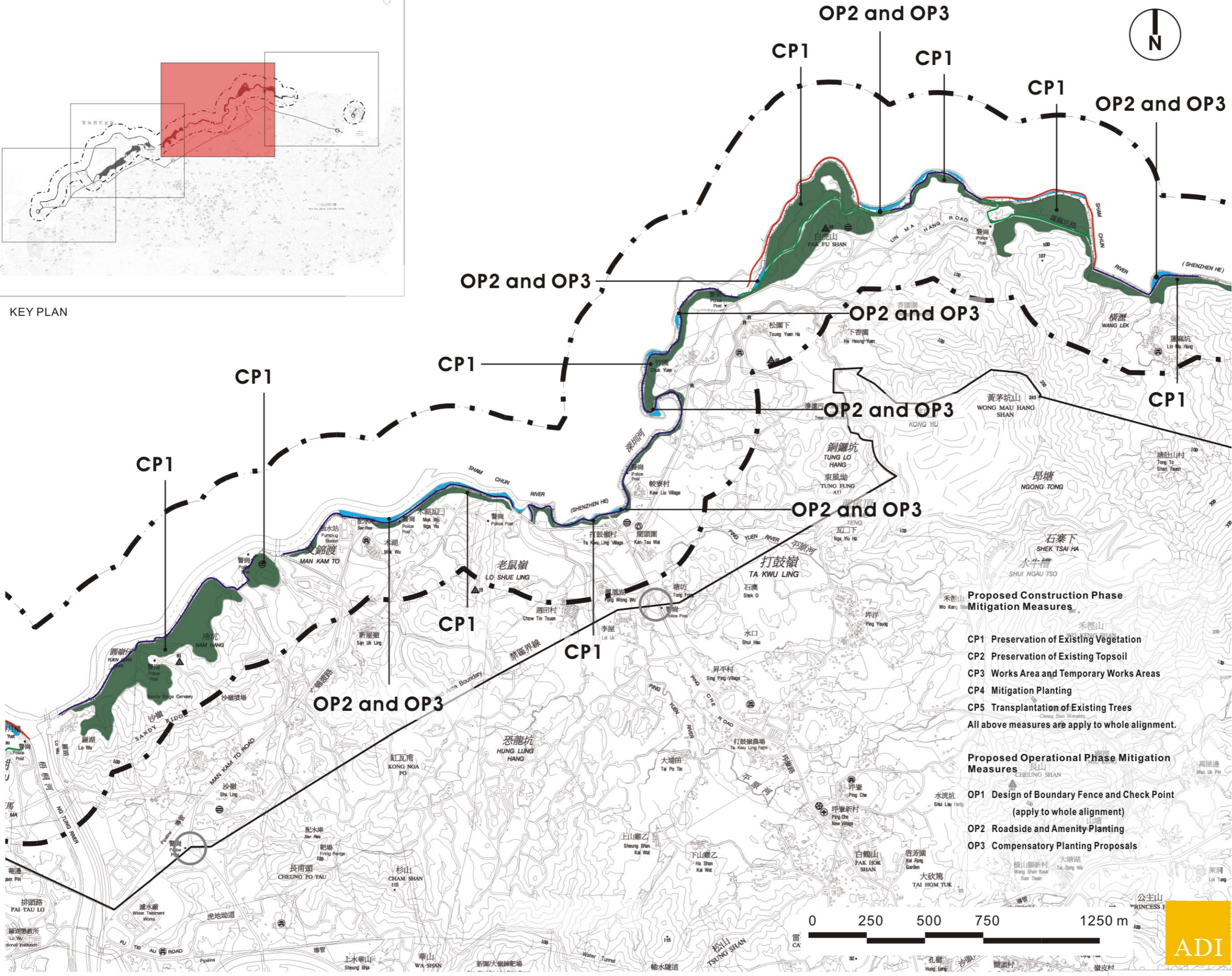
Designed	TEAM	Eng.Chk.	---
Drawn	EIK	Coordination	---
Dwg.Chk.	ELK	Approved	CJF
Scale	N.T.S.	Project	216727
Drawing No.	Figure 7-8B	CAD File	---
Status			
Rev			

This document should not be relied on or used in circumstances other than those for which it was originally prepared and for which Mott MacDonald Hong Kong Limited was commissioned. Mott MacDonald Hong Kong Limited accepts no responsibility for this document to any other party than the person by whom it was commissioned.





KEY PLAN



Legend

- 500M Study Area
- Frontier Closed Area
- Proposed secondary boundary fence along existing boundary patrol road
- Proposed new boundary patrol road with primary and secondary boundary fences
- Existing boundary fence to be removed
- Existing check point to be removed
- Proposed new check point
- Existing Mature Vegetation to be preserved
- Potential Location for Compensatory and Screening Planting
- CP1** Mitigation Code of Recommended Mitigation Measures

Proposed Construction Phase Mitigation Measures

- CP1 Preservation of Existing Vegetation
- CP2 Preservation of Existing Topsoil
- CP3 Works Area and Temporary Works Areas
- CP4 Mitigation Planting
- CP5 Transplantation of Existing Trees

All above measures are apply to whole alignment.

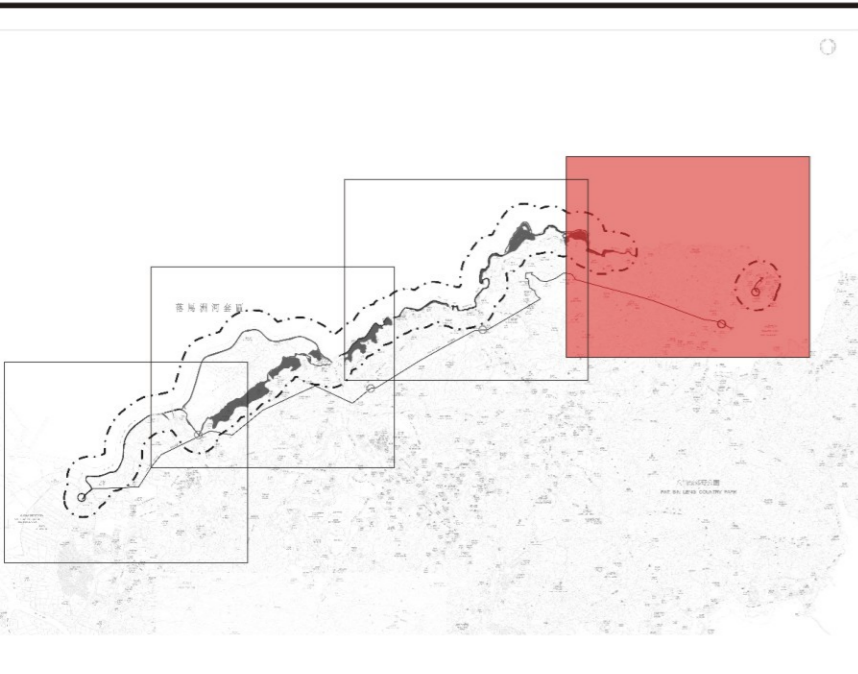
Proposed Operational Phase Mitigation Measures

- OP1 Design of Boundary Fence and Check Point (apply to whole alignment)
- OP2 Roadside and Amenity Planting
- OP3 Compensatory Planting Proposals

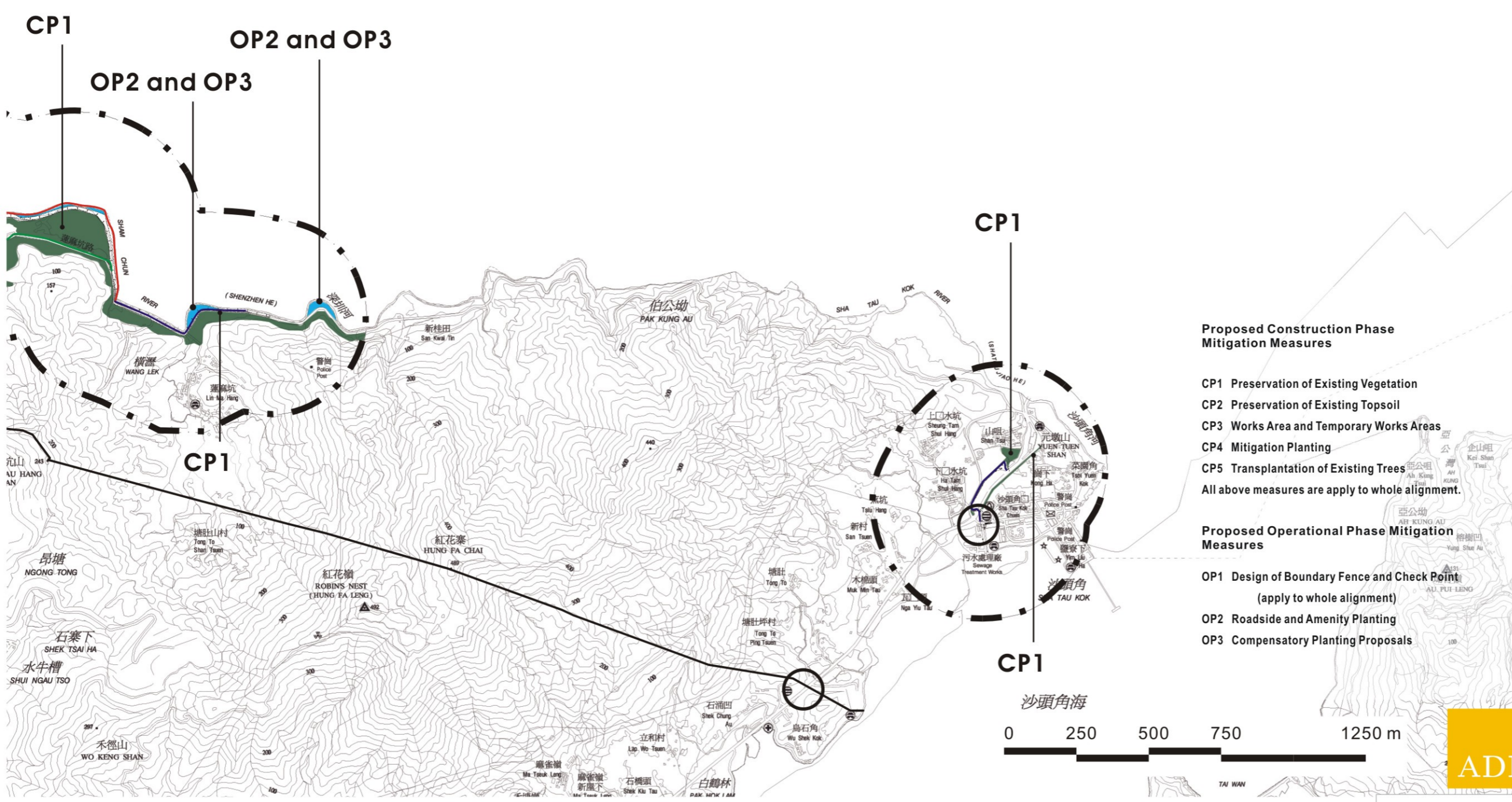
Rev	Date	Drawn	Description	Ch'kd	App'd
Client					
<p>Mott MacDonald Hong Kong Limited 7th Floor West Wing Office Building New World Centre 20 Salisbury Road Hong Kong Tel: 2828 5757 Fax: 2827 1823 Web: www.mottmac.com.hk</p>					
<p>Project: CONSTRUCTION OF A SECONDARY BOUNDARY FENCE AND NEW SECTIONS OF PRIMARY BOUNDARY FENCE AND BOUNDARY PATROL ROAD</p>					
<p>Recommended Landscape Mitigation Measures</p>					
Designed	TEAM	Eng.Chk.	---		
Drawn	EIK	Coordination	---		
Dwg.Chk.	ELK	Approved	CJF		
Scale	N.T.S.	Project	216727	Status	
Drawing No.		CAD File	---	Rev	



This document should not be relied on or used in circumstances other than those for which it was originally prepared and for which Mott MacDonald Hong Kong Limited was commissioned. Mott MacDonald Hong Kong Limited accepts no responsibility for this document to any other party than the person by whom it was commissioned.



KEY PLAN



- CP1 Preservation of Existing Vegetation
- CP2 Preservation of Existing Topsoil
- CP3 Works Area and Temporary Works Areas
- CP4 Mitigation Planting
- CP5 Transplantation of Existing Trees
- All above measures are apply to whole alignment.

Proposed Operational Phase Mitigation Measures

- OP1 Design of Boundary Fence and Check Point (apply to whole alignment)
- OP2 Roadside and Amenity Planting
- OP3 Compensatory Planting Proposals

Legend

- 500M Study Area
- Frontier Closed Area
- Proposed secondary boundary fence along existing boundary patrol road
- Proposed new boundary patrol road with primary and secondary boundary fences
- Existing boundary fence to be removed
- Existing check point to be removed
- Proposed new check point
- Existing Mature Vegetation to be preserved
- Potential Location for Compensatory and Screening Planting
- CP1** Mitigation Code of Recommended Mitigation Measures

Rev	Date	Drawn	Description	Ch'k'd	App'd
Client					



Mott MacDonald
 Mott MacDonald Hong Kong Limited
 7th Floor
 West Wing Office Building
 New World Centre
 20 Salisbury Road
 Hong Kong
 Tel 2828 5757
 Fax 2827 1823
 Web www.mottmac.com.hk

Project
 CONSTRUCTION OF A SECONDARY BOUNDARY FENCE AND NEW SECTIONS OF PRIMARY BOUNDARY FENCE AND BOUNDARY PATROL ROAD

Title
 Recommended Landscape Mitigation Measures

Designed	TEAM	Eng.Chk.	---
Drawn	EIK	Coordination	---
Dwg.Chk.	ELK	Approved	CJF
Scale	N.T.S.	Project	216727
Drawing No.	Figure 7-8D	CAD File	---
		Status	
		Rev	

This document should not be relied on or used in circumstances other than those for which it was originally prepared and for which Mott MacDonald Hong Kong Limited was commissioned. Mott MacDonald Hong Kong Limited accepts no responsibility for this document to any other party than the person by whom it was commissioned.

