



- LEGEND:**
- - - KAM SHAN COUNTRY PARK BOUNDARY
 - - - SHEK LEI PUI WATER TREATMENT WORK CONSULTATION ZONE
 - - - STUDY AREA
 - - - LION ROCK COUNTRY PARK BOUNDARY
 - - - LOWER DIRECT WATER GATHERING GROUND

826 000 N

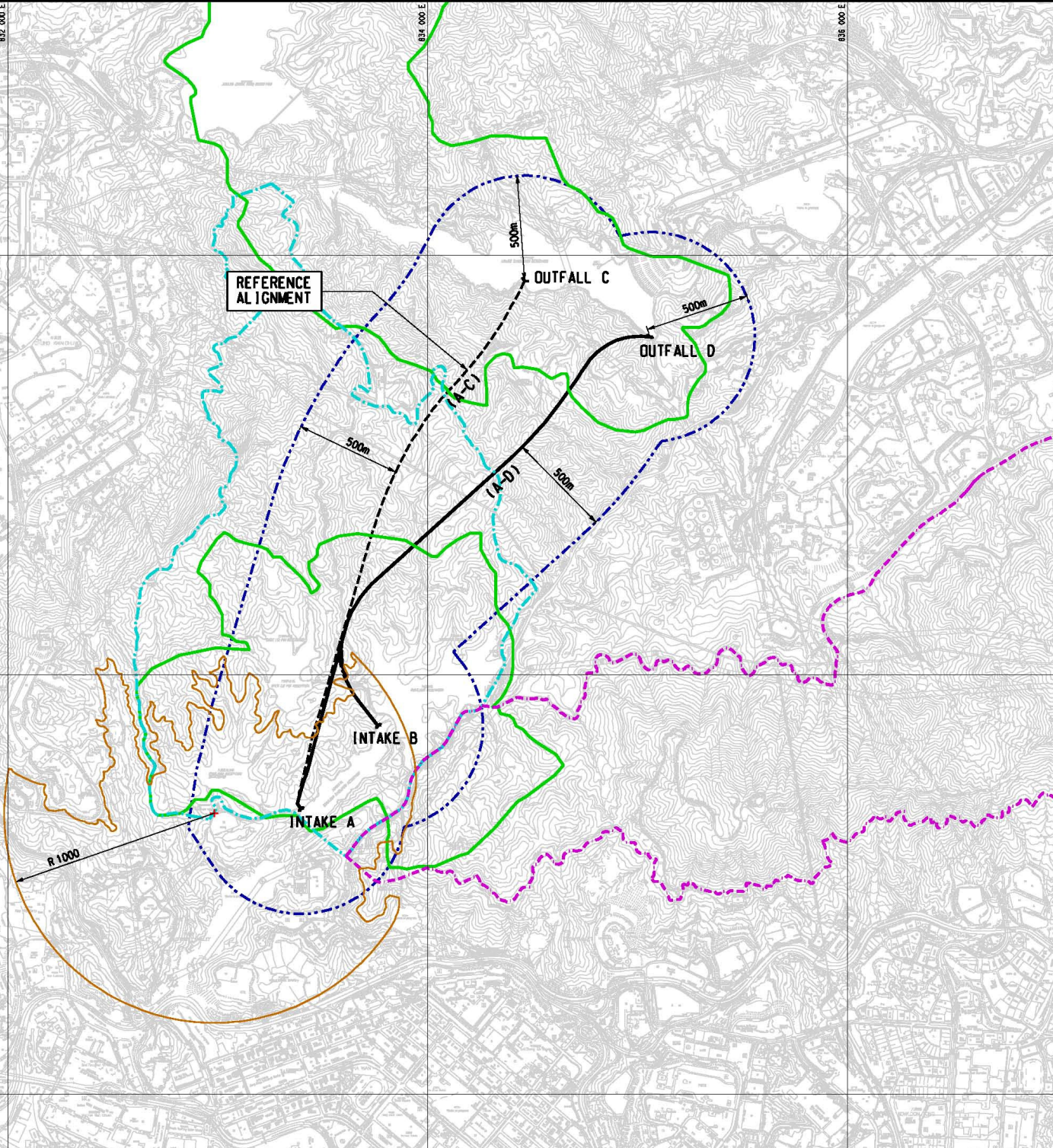
832 000 E

834 000 E

836 000 E

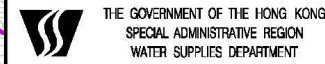
824 000 N

822 000 N



P2	NOV 08	MINI	MINOR AMENDMENT	FY	AFK
P1	MAR 08	VN	FIRST ISSUE	RL	AFK
Rev	Date	Drawn	Description	Checked	Approved

Client



Mott MacDonald

Mott MacDonald Hong Kong Ltd
21st Floor
West Wing Office Building
New World Centre
29 Salisbury Road
Tsim Sha Tsui, Kowloon
Hong Kong
Tel: 3878 5257
Fax: 3827 1628
Web: www.mottmac.com.hk

Project
Agreement No. CE55/2006(IEP)
Inter-reservoirs Transfer Scheme (IRTS)
Water Tunnel between Kowloon Bywash
Reservoir and Lower Shing Mun Reservoir
Environmental Impact Assessment
Investigation

Title

**REFERENCE AND ALTERNATIVE TUNNEL
ALIGNMENT AND PORTALS**

Designed	HN/PW	Eng. Chk.	AFK
Drawn	VN	Coordination	AFK
Dwg. Chk.	HN	Approved	AFK
Scale	Project	240564	Status
1:10000@A1	CAD FILE		INF

Drawing No. **ENVIRONMENTAL REPORT NEW DA REPORT-0616/10/RS-2-2.dgn**
Rev

© Mott MacDonald Hong Kong Limited

This document should not be relied on or used in circumstances other than those for which it was originally prepared and for which Mott MacDonald Hong Kong Limited was commissioned. Mott MacDonald Hong Kong Limited accepts no responsibility for this document to any other party other than the person by whom it was commissioned.

© COPYRIGHT RESERVED

FIGURE 2-2

P2