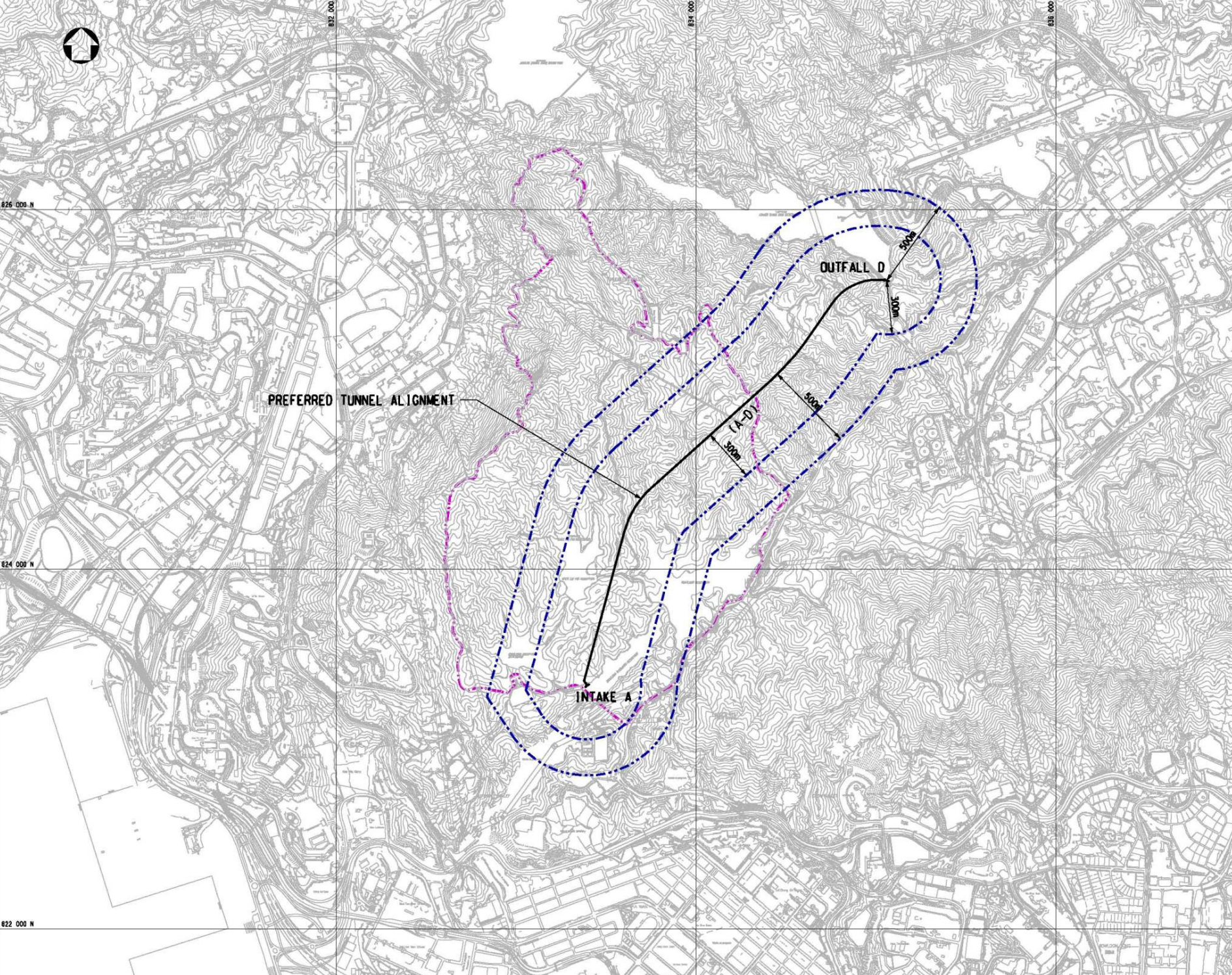




LEGEND:
 - - - - - KAM SHAN COUNTRY PARK BOUNDARY
 - - - - - STUDY AREA



Rev	Date	Drawn/Description	Checked/Approved

Client
 THE GOVERNMENT OF THE HONG KONG
 SPECIAL ADMINISTRATIVE REGION
 WATER SUPPLIES DEPARTMENT

Mott MacDonald
 Mott MacDonald Hong Kong Ltd
 21st Floor
 West Wing Office Building
 New World Centre
 29 Salisbury Road
 Tsim Sha Tsui, Kowloon
 Hong Kong
 Tel: 3828 5252
 Fax: 3827 1628
 Web: www.mottmac.com.hk

Project
 Agreement No. CE55/2006(IEP)
 Inter-reservoirs Transfer Scheme (IRTS)
 Water Tunnel between Kowloon Bywash
 Reservoir and Lower Shing Mun Reservoir
 Environmental Impact Assessment
 Investigation

Title
 THE PREFERRED SCHEME

Designed: HNU/PW
 Drawn: VN
 Dwg.Chk: HN
 Eng.Chk: PW
 Coordination: PW
 Approved: AFX

Scale	1:100000A1	Project	240564	Status	INF
Scale	1:100000A1	Proj. No.	240564	Status	INF
Scale	1:100000A1	Proj. No.	240564	Status	INF

© Mott MacDonald Hong Kong Limited
 This document should not be relied on or used in circumstances other than those for which it was originally prepared and for which Mott MacDonald Hong Kong Limited was commissioned. Mott MacDonald Hong Kong Limited accepts no responsibility for this document to any other party other than the person by whom it was commissioned.

COPYRIGHT RESERVED

FIGURE 2-5