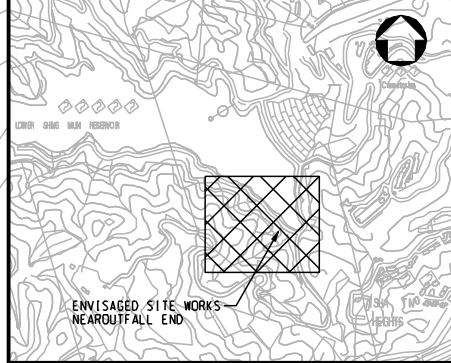




下城門水塘
LOWER SHING MUN RESERVOIR

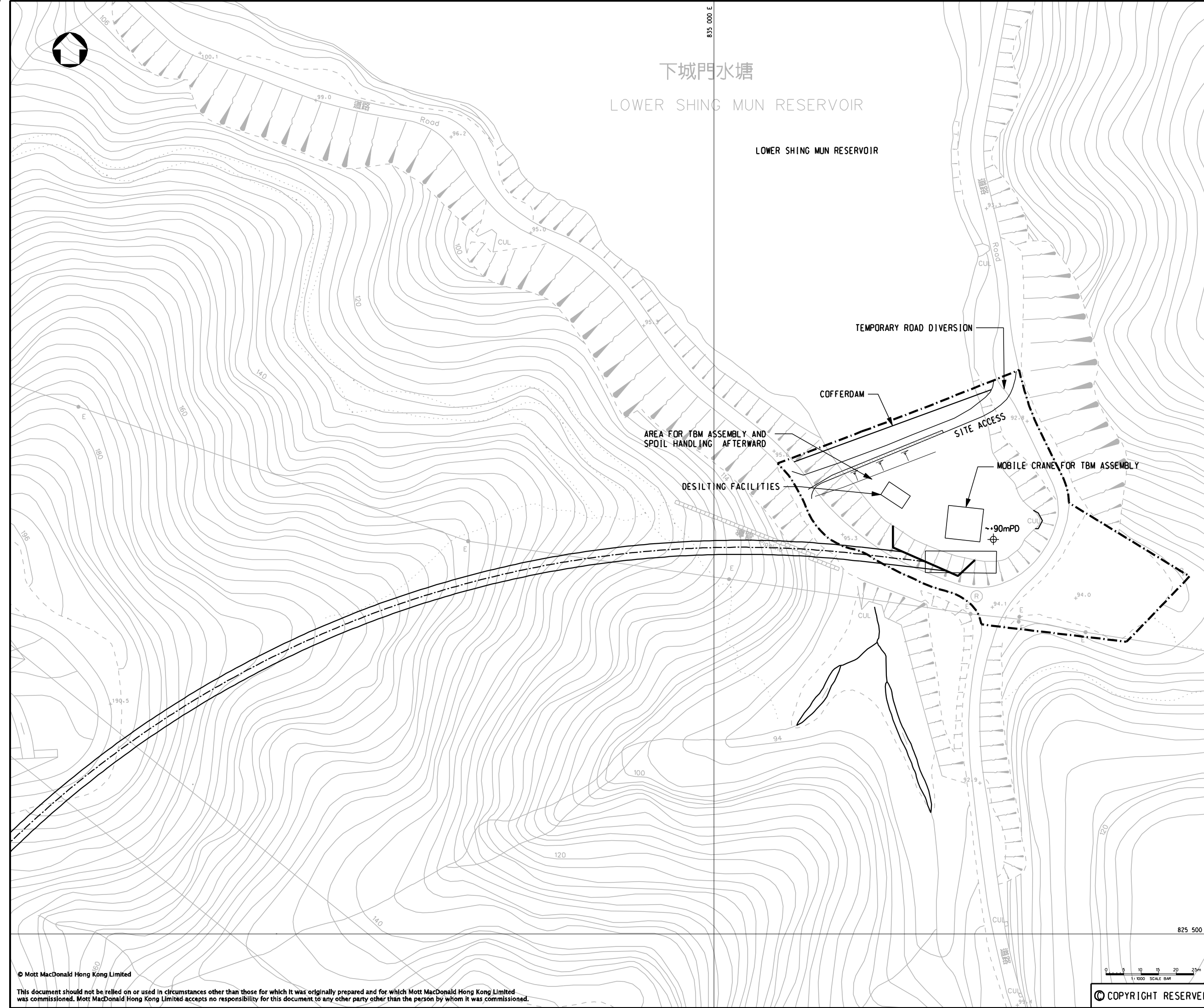
LOWER SHING MUN RESERVOIR




KEY PLAN

NOTE:
DESIGN DETAILS OF THE COFFERDAM WILL BE DETERMINED BY THE CONTRACTOR.

LEGEND:
--- WORKSITE AREA



P1	NOV 08	MING	FIRST ISSUE	CWK	AFK
Rev	Date	Drawn	Description	Ch'kd	App'd

Client

**THE GOVERNMENT OF THE HONG KONG
SPECIAL ADMINISTRATIVE REGION
WATER SUPPLIES DEPARTMENT**

m Mott MacDonald
 Mott MacDonald Hong Kong Ltd
 7th Floor
 West Wing Office Building
 New World Centre
 20 Salisbury Road
 Tsim Sha Tsui, Kowloon
 Hong Kong
 Tel: 2828 5757
 Fax: 2827 1823
 Web: www.mottmac.com.hk

Project
 Agreement No. CE55/2006(EP)
 Inter-reservoirs Transfer Scheme (IRTS)
 Water Tunnel between Kowloon Byewash
 Reservoir and Lower Shing Mun Reservoir
 Environmental Impact Assessment
 Investigation

Title
**ENVISAGED SITE WORKS
NEAR OUTFALL END**

Designed	CWK	Eng.Chk.	CWK
Drawn	MING	Coordination	CWK
Dwg.Chk.	CWK	Approved	AFK

Scale	Project	Status
1:1000	240564	INF
Drawing No.	CAD File	Rev
FIGURE 2-6	J:\240564\REPORT\ENV\EA.REPORT1-08126\FIGURE-2-6.dgn	P1

825 500 N
 0 5 10 15 20 25m
 1:1000 SCALE BAR
 COPYRIGHT RESERVED