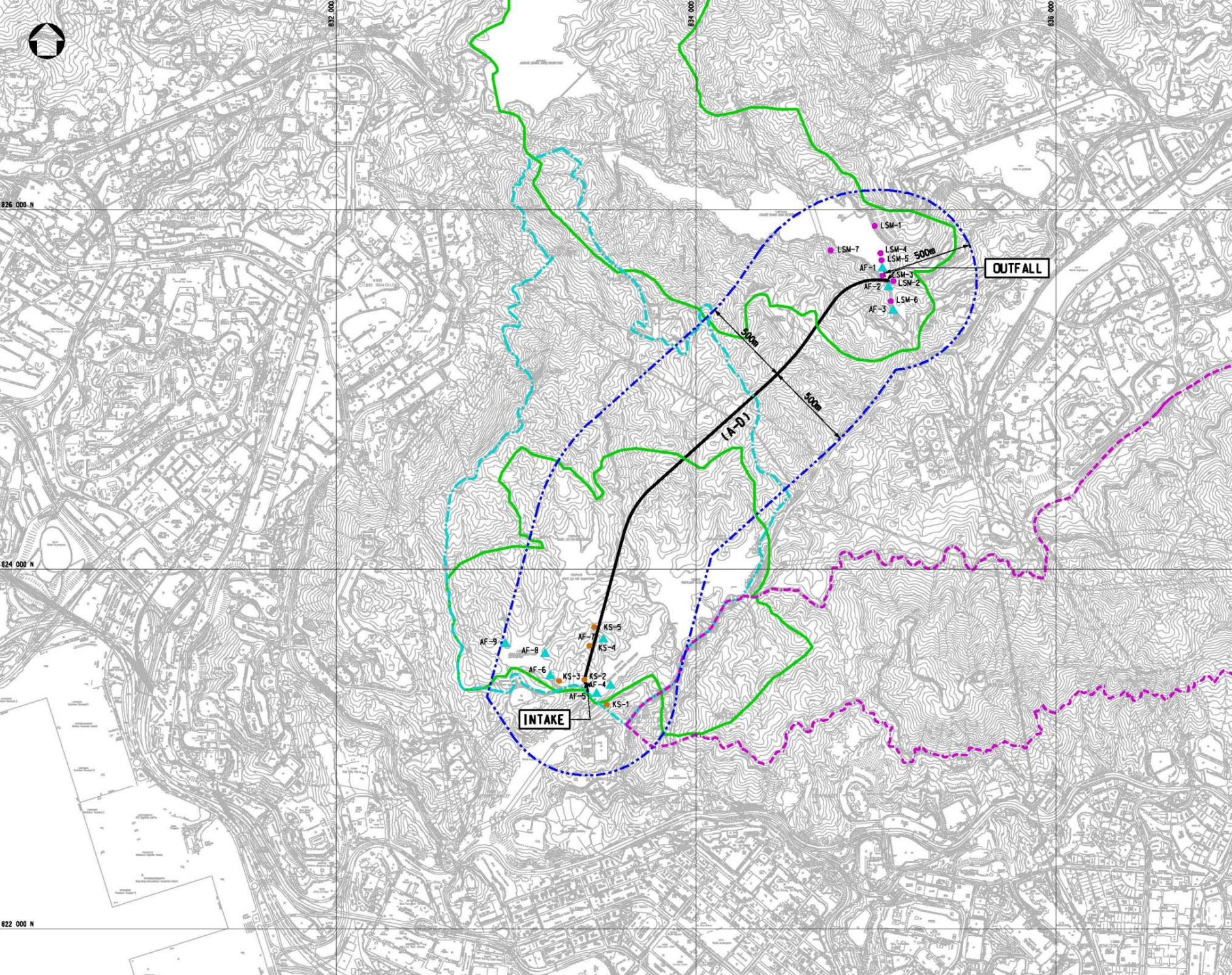




- LEGEND:**
- STUDY AREA BOUNDARY
 - (A-D) TUNNEL ALIGNMENT
 - KAM SHAN COUNTRY PARK BOUNDARY
 - LION ROCK COUNTRY PARK BOUNDARY
 - LOWER WATER GATHERING GROUND
 - LSM-1 FAUNA POINT COUNT SURVEY LOCATION AT LOWER SHING MUN
 - KS-1 FAUNA POINT COUNT SURVEY LOCATION AT KAM SHAN
 - ▲ AF-1 AQUATIC FAUNA SURVEY LOCATION



Rev	Date	Drawn/Description	Checked/Approved

Client
THE GOVERNMENT OF THE HONG KONG
 SPECIAL ADMINISTRATIVE REGION
 WATER SUPPLIES DEPARTMENT

Mott MacDonald
 Mott MacDonald Hong Kong Ltd
 21st Floor
 West Wing Office Building
 New World Centre
 29 Salisbury Road
 Tsim Sha Tsui, Kowloon
 Hong Kong
 Tel: 3828 5252
 Fax: 3827 1628
 Web: www.mottmac.com.hk

Project
Agreement No. CE55/2006(IEP)
Inter-reservoirs Transfer Scheme (IRTS)
Water Tunnel between Kowloon Byewash Reservoir and Lower Shing Mun Reservoir
Environmental Impact Assessment Investigation

Title
ECOLOGICAL SURVEY LOCATIONS AND STUDY BOUNDARY

Designed	JC	Eng. Chk.	RL
Drawn	VN	Coordination	
Dwg. Chk.	HN	Approved	

Scale	1:100000A1	Project	240564	Status	INF
Drawing No.					