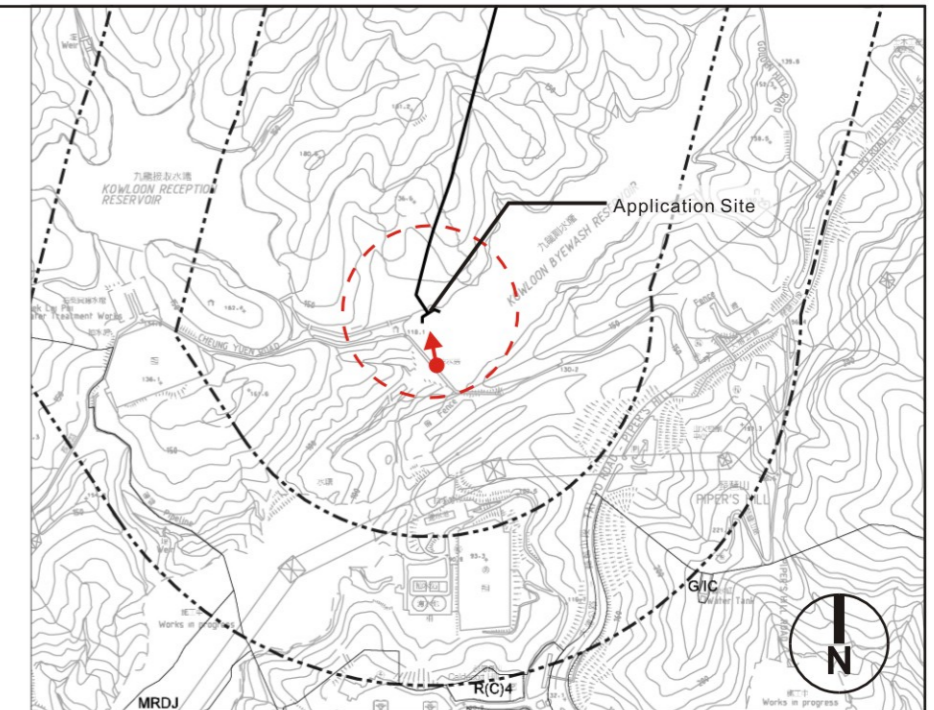
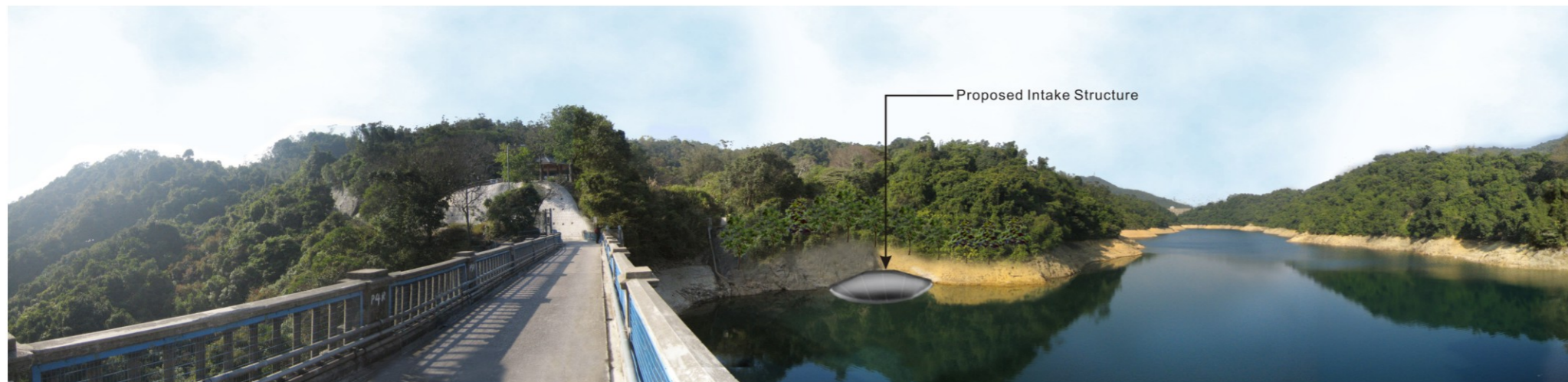


VSR T1  
Trail walkers and visitors of Kam Shan Country Park across the dam of Kowloon Byewash Reservoir (facing north)  
(Existing Situation)

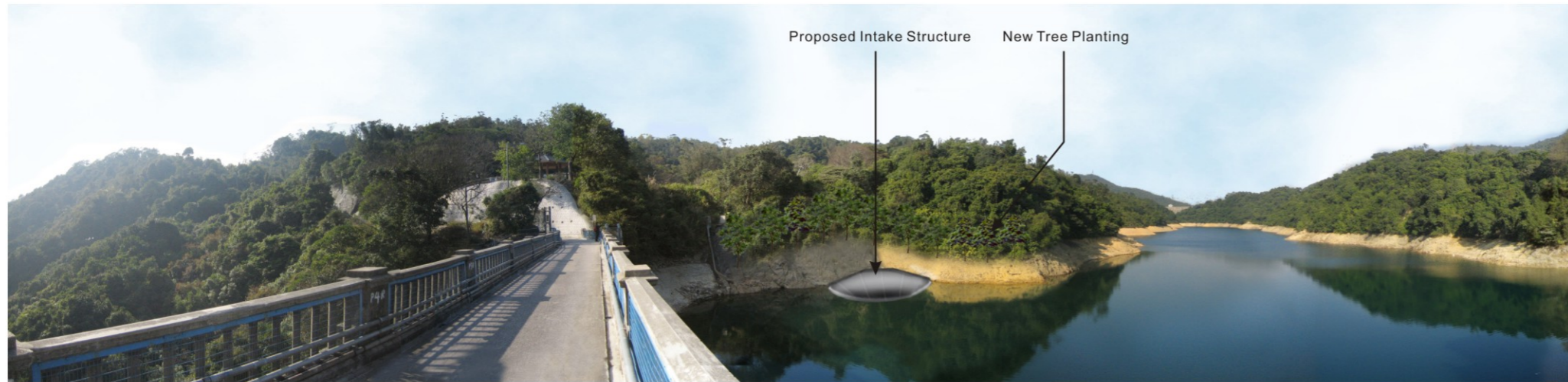


Location Plan

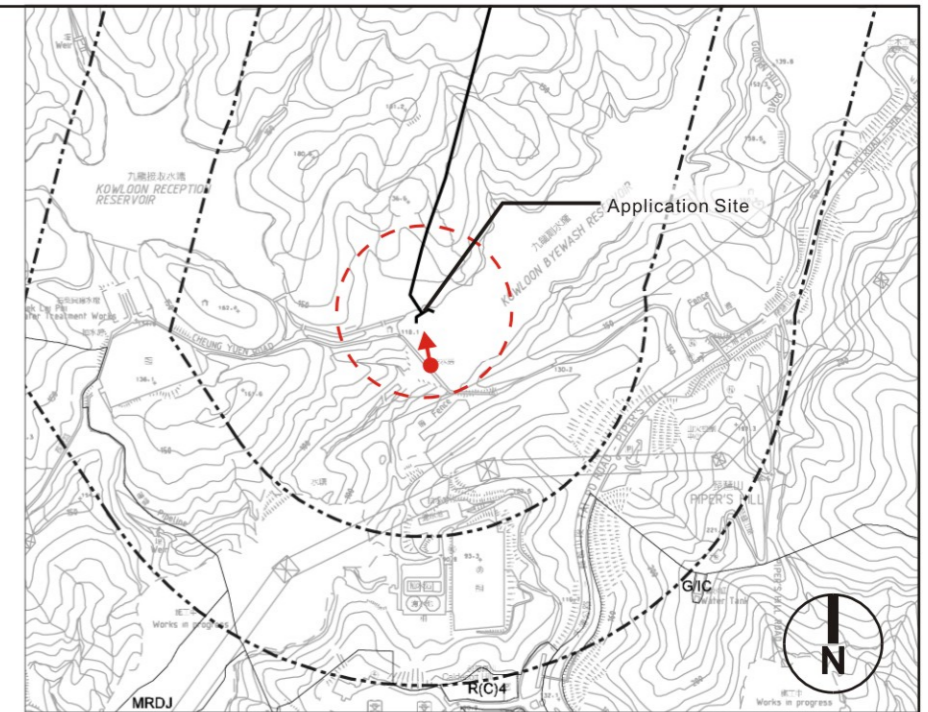


VSR T1  
Trail walkers and visitors of Kam Shan Country Park across the dam of Kowloon Byewash Reservoir (facing north)  
(Following Construction)

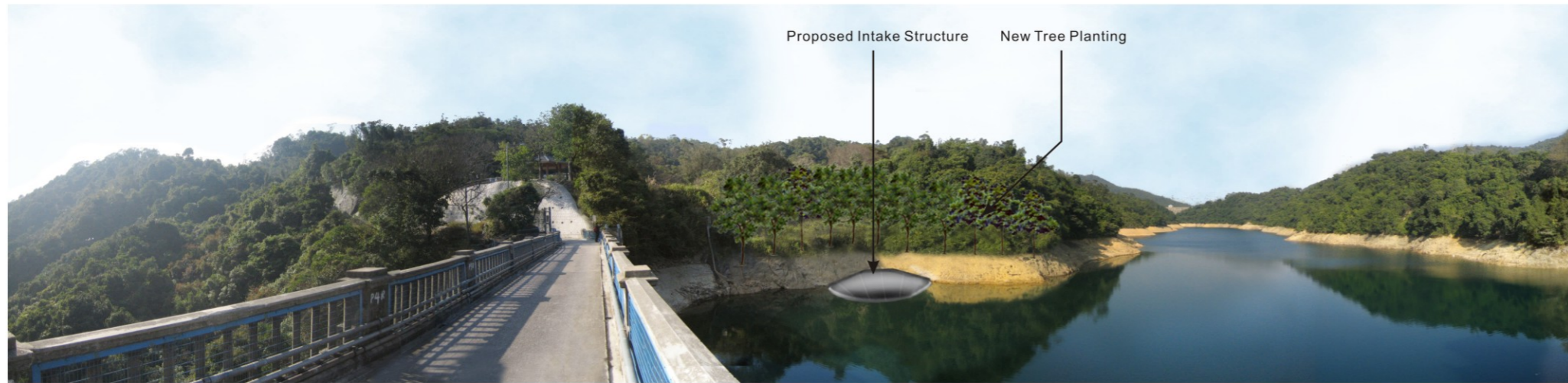




Operation Phase - Day 1  
with mitigation measures newly implemented



Location Plan



Operation Phase - Year 10  
with mitigation measures fully established

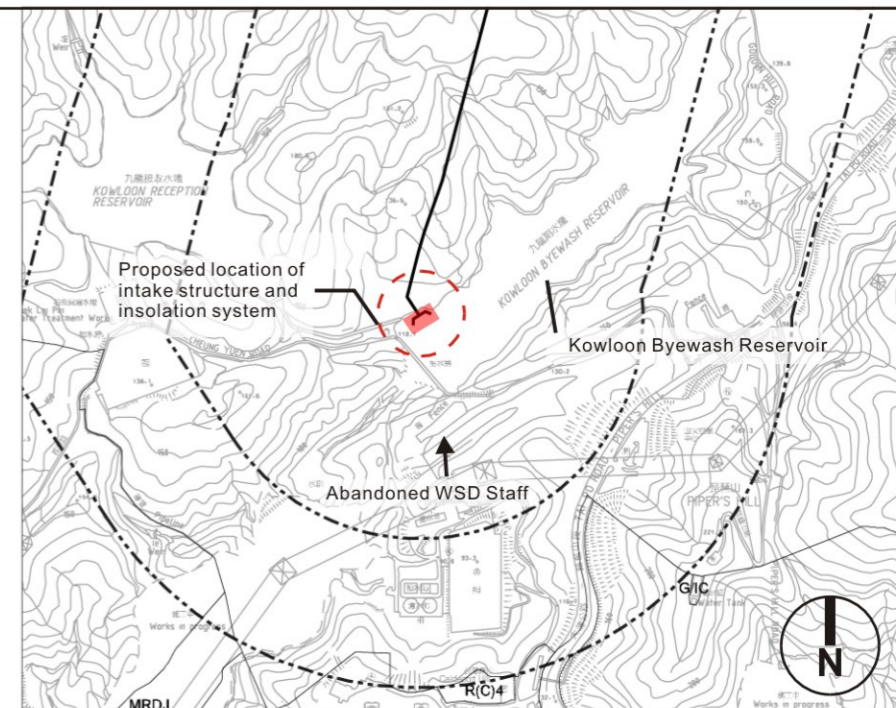




View from Abandoned WSD Staff Quarters  
(Existing Situation)



View from Abandoned WSD Staff Quarters  
(Following Construction)



Location Plan

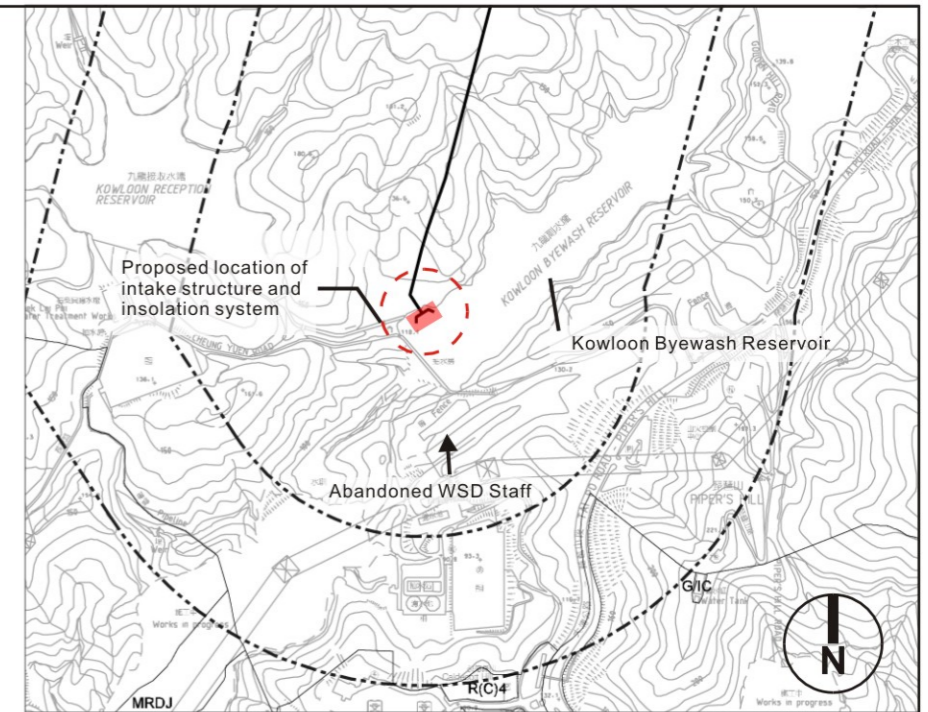




Operation Phase - Day 1  
with mitigation measures newly implemented



Operation Phase - Year 10  
with mitigation measures fully established

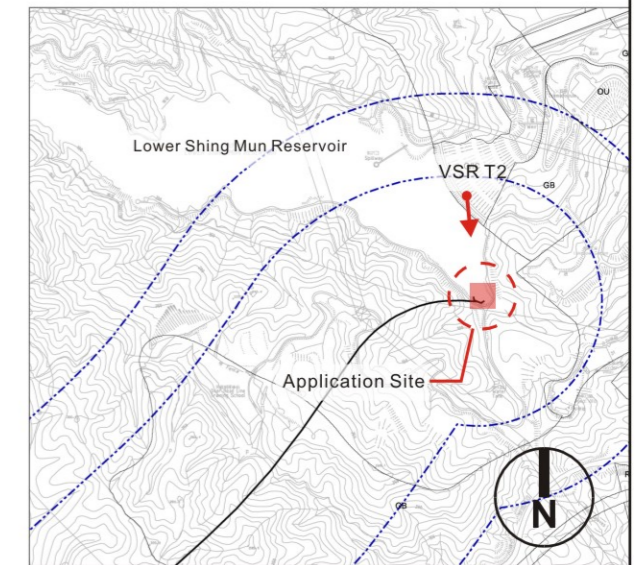


Location Plan

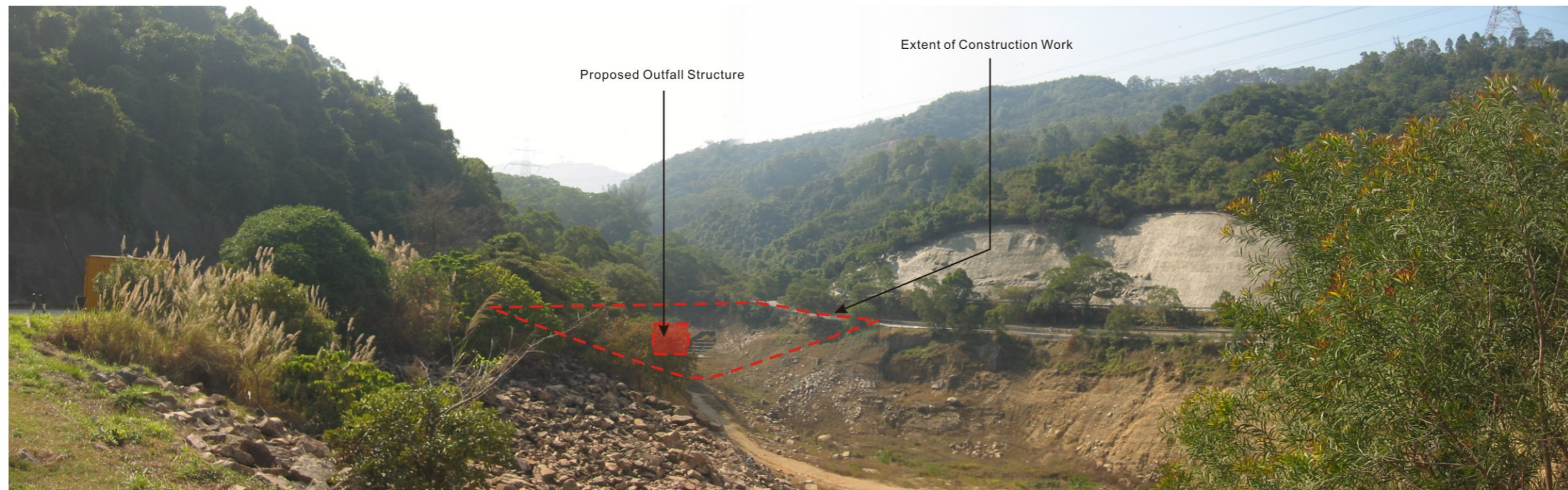




VSR T2  
Trail hikers and visitors of Lower Shing Mun Reservoir across the dam (Facing South)  
(Existing Situation)

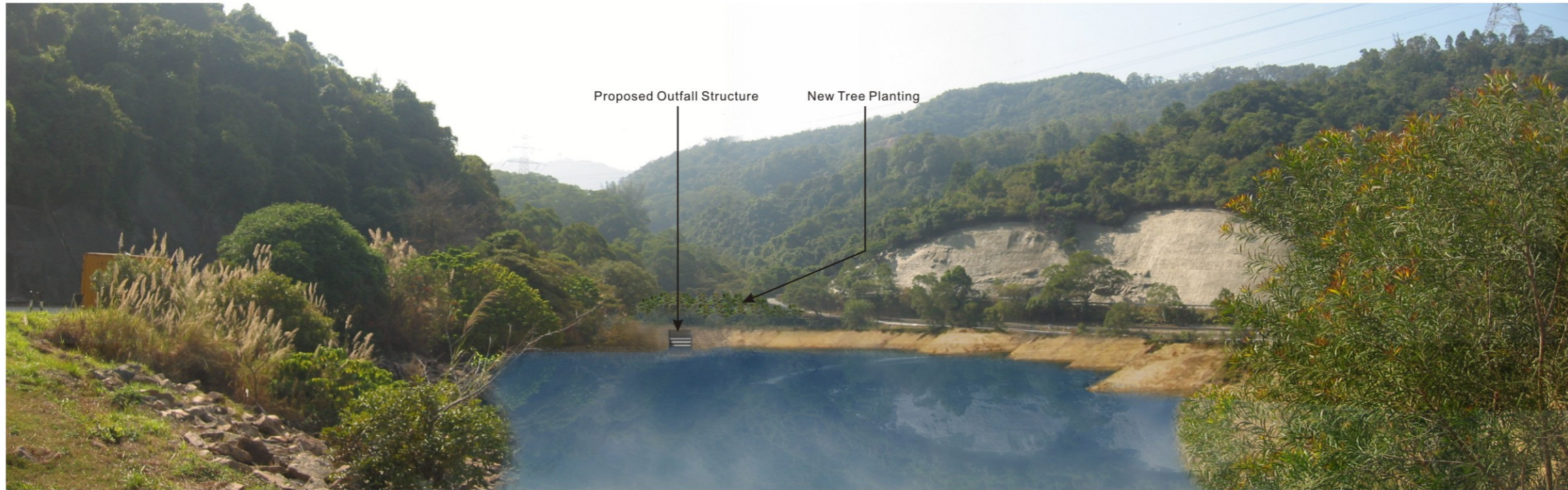


Location Plan

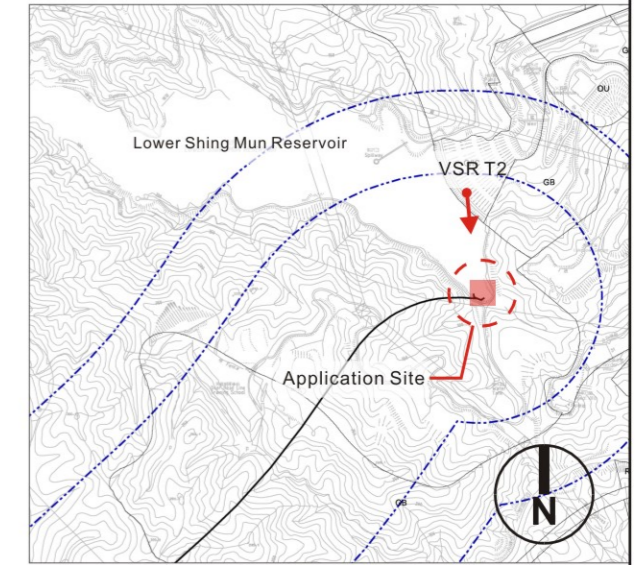


VSR T2  
Trail hikers and visitors of Lower Shing Mun Reservoir across the dam (Facing South)  
(Following Construction)

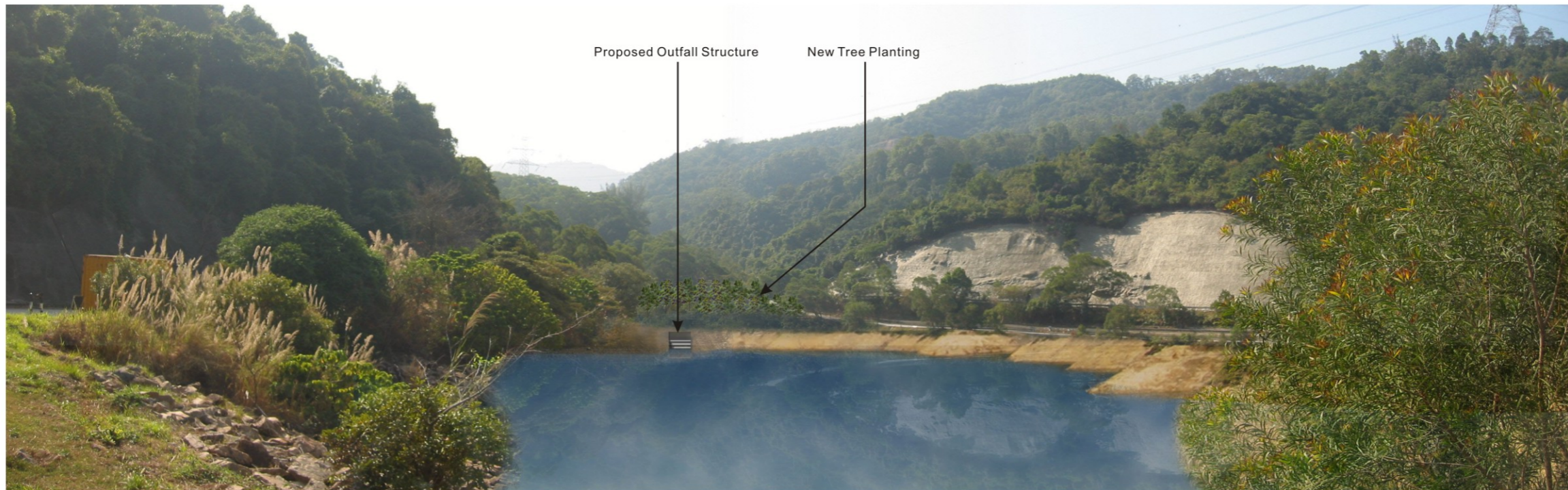




Operation Phase Day 1  
With mitigation measures newly implemented

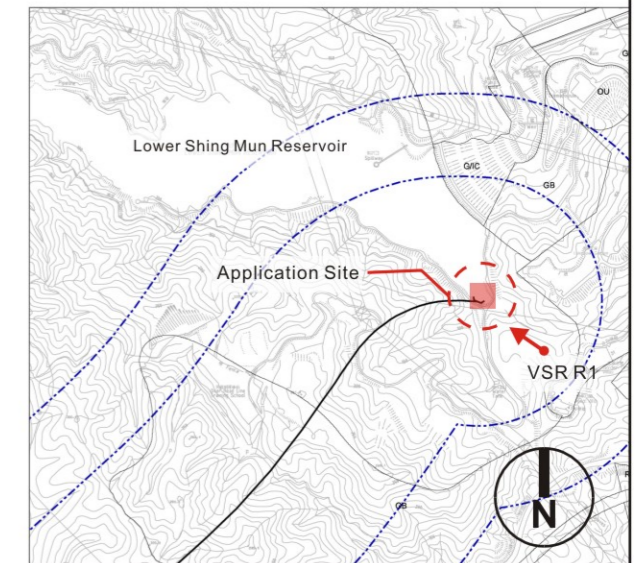
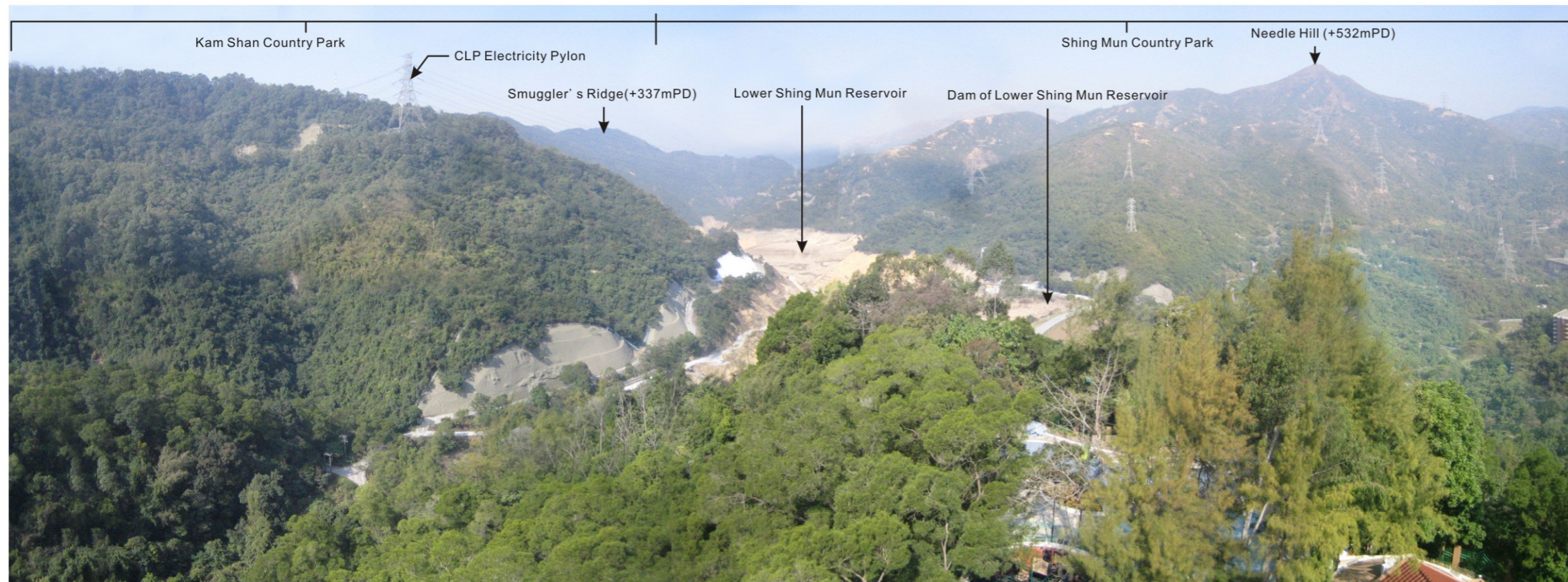


Location Plan



Operation Phase Year 10  
With mitigation measures fully established





Location Plan

VSR R1  
Residents of Lakeview Garden (Facing Northwest)  
(Existing Situation)

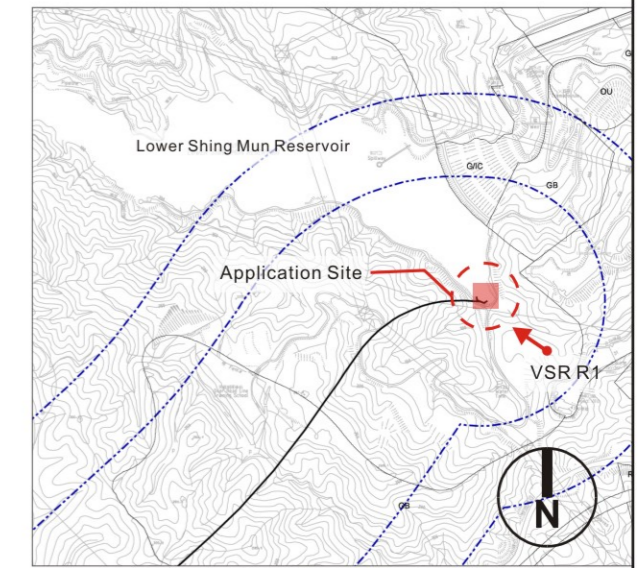


VSR R1  
Residents of Lakeview Garden (Facing Northwest)  
(Following Construction)





Operation Phase Day 1  
With mitigation measures newly implemented



Location Plan

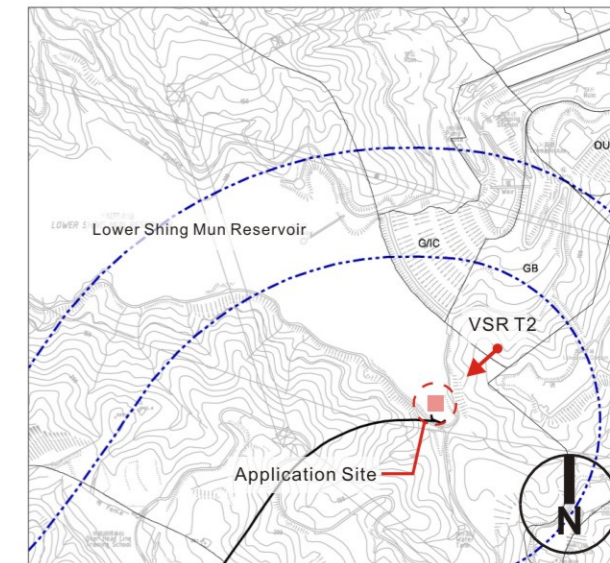


Operation Phase Year 10  
With mitigation measures fully established

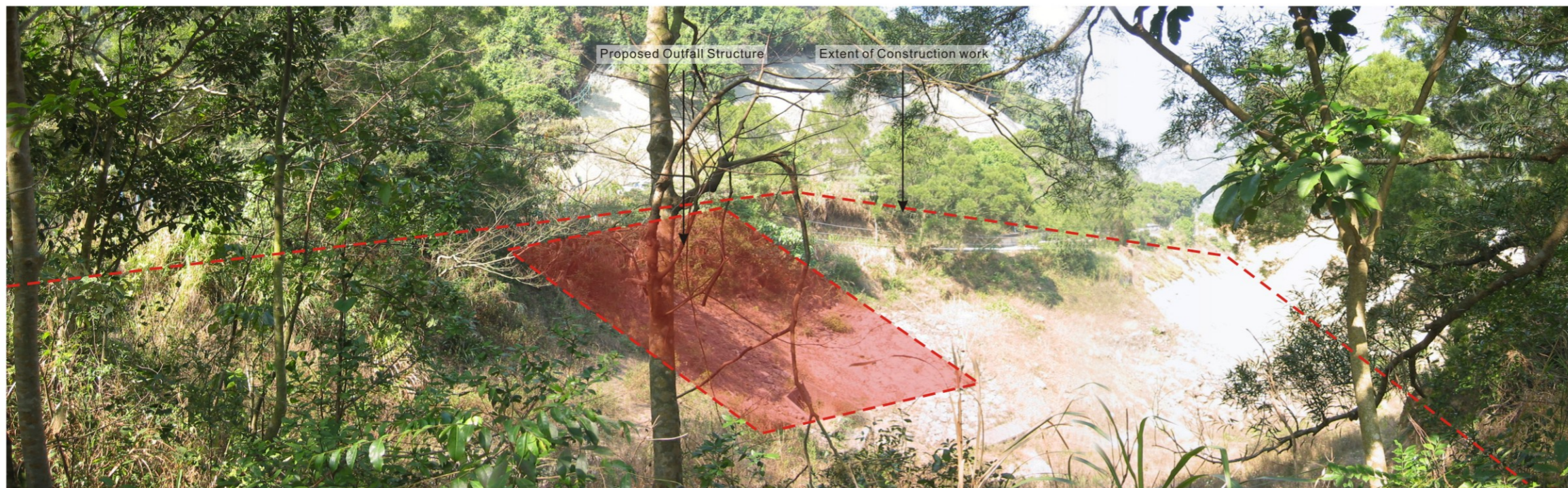




VSR T2  
Trail hikers and visitors of Lower Shing Mun Reservoir across the dam (Facing South)  
(Existing Situation)

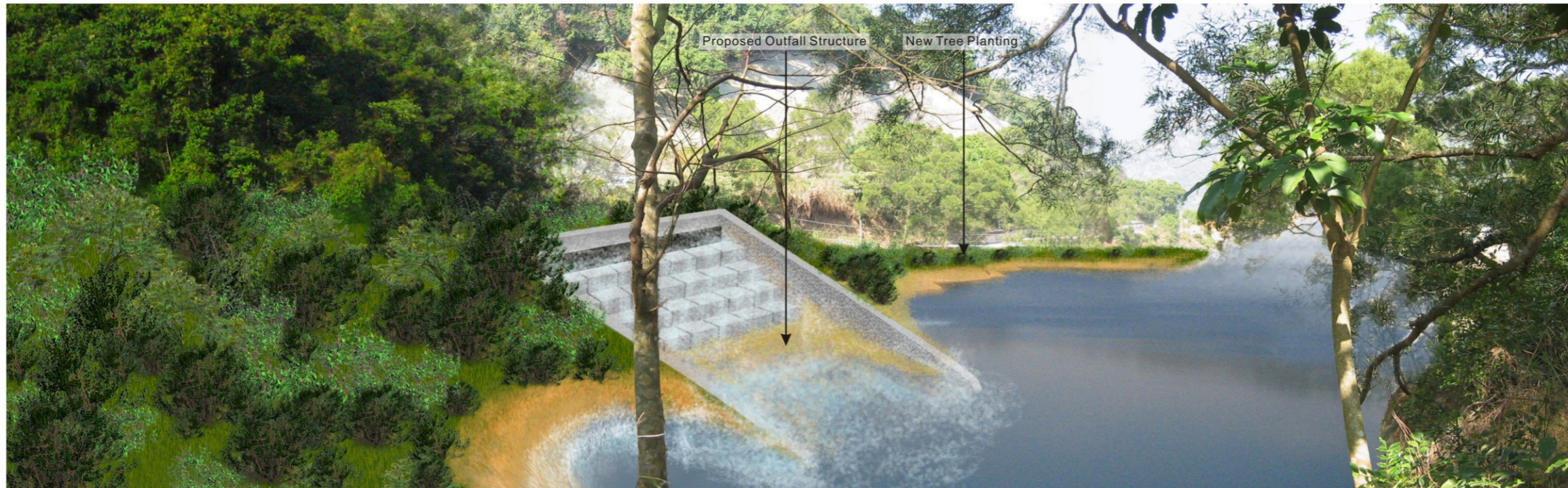


Location Plan

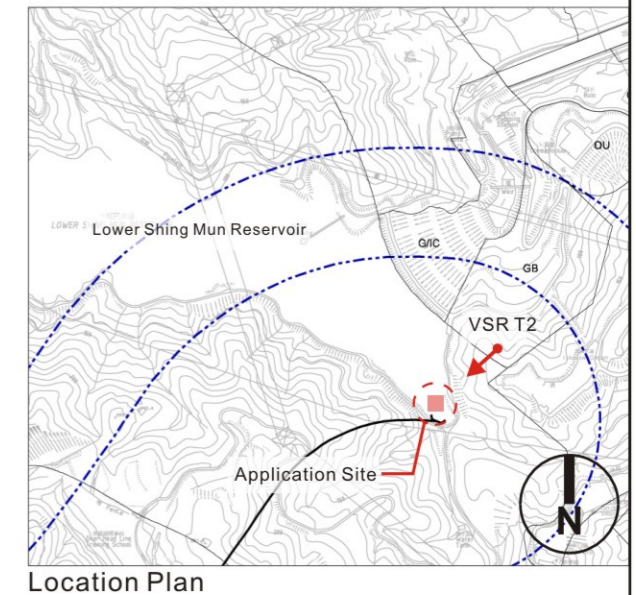


VSR T2  
Trail hikers and visitors of Lower Shing Mun Reservoir across the dam (Facing South)  
(Following Construction)





Operation Phase Day 1  
With mitigation measures newly implemented



Operation Phase Year 10  
With mitigation measures fully established