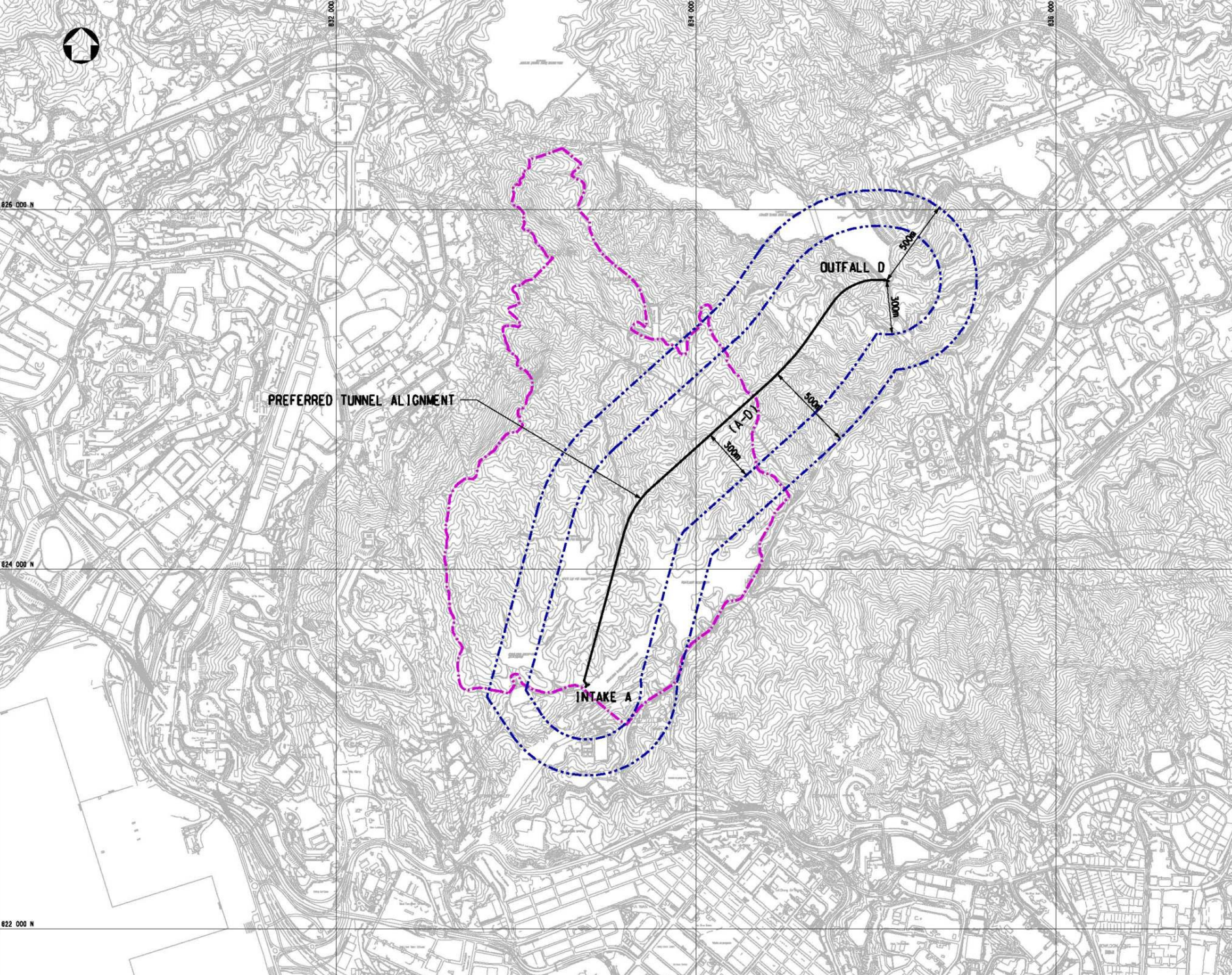




**LEGEND:**  
 - - - - - KAM SHAN COUNTRY PARK BOUNDARY  
 - - - - - STUDY AREA



Rev	Date	Drawn/Description	Checked/Approved

Client  
 THE GOVERNMENT OF THE HONG KONG  
 SPECIAL ADMINISTRATIVE REGION  
 WATER SUPPLIES DEPARTMENT

**Mott MacDonald**  
 Mott MacDonald Hong Kong Ltd  
 21st Floor  
 West Wing Office Building  
 New World Centre  
 29 Salisbury Road  
 Tsim Sha Tsui, Kowloon  
 Hong Kong  
 Tel: 3828 5257  
 Fax: 3827 1628  
 Web: www.mottmac.com.hk

Project  
 Agreement No. CE55/2006(IEP)  
 Inter-reservoirs Transfer Scheme (IRTS)  
 Water Tunnel between Kowloon Bywash  
 Reservoir and Lower Shing Mun Reservoir  
 Environmental Impact Assessment  
 Investigation

Title  
 THE PREFERRED SCHEME

Designed	HNU/PW	Eng. Chk.	PW
Drawn	VN	Coordination	Pg
Dwg. Chk.	HN	Approved	AFK

Scale	1:100000A1	Project	240564	Status	INF

Drawing No.	
-------------	--

© Mott MacDonald Hong Kong Limited

This document should not be relied on or used in circumstances other than those for which it was originally prepared and for which Mott MacDonald Hong Kong Limited was commissioned. Mott MacDonald Hong Kong Limited accepts no responsibility for this document to any other party other than the person by whom it was commissioned.

© COPYRIGHT RESERVED

FIGURE 1-1