

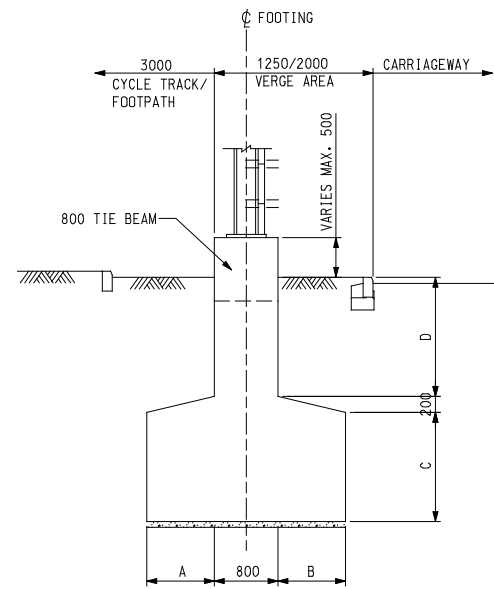
NOTES:  
 1. FOR NOTES AND LEGEND, REFER TO 2000/18/NB/001R.

Approved

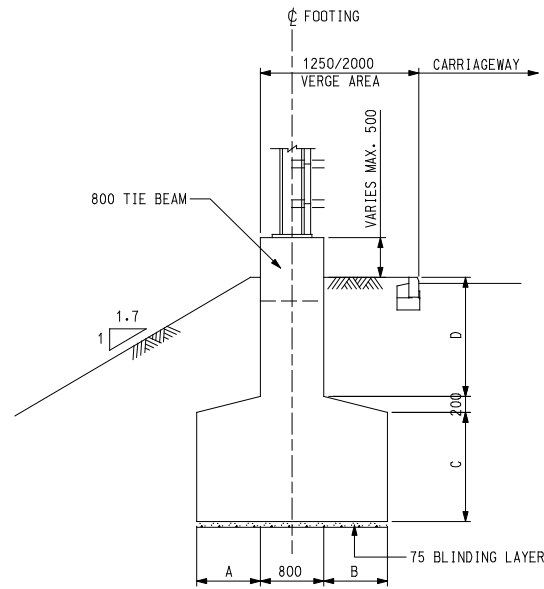
Contract No. HY/2000/18  
 Project KAM TIN BYPASS

Drawing Title AS CONSTRUCTED GENERAL LAYOUT OF NOISE BARRIER (SHEET 2 OF 2) (NB89 to NB96)  
 HyD Structure No.  
 Drawing No. 2000/18/NB/002R  
 Scale 1:1000

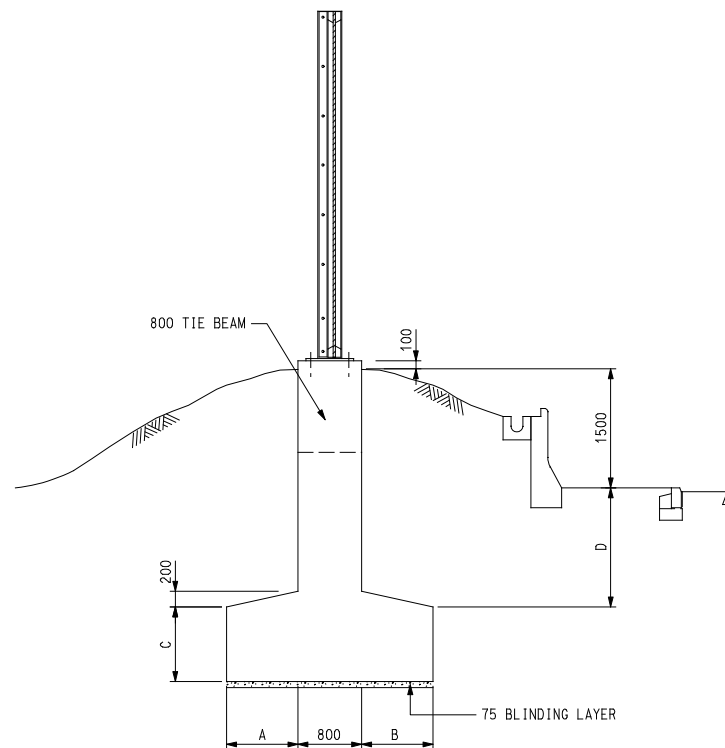
博盛工程顧問有限公司  
 Binnie Black & Veatch Hong Kong Limited  
 施偉拔工程顧問有限公司  
 Wilbur Smith Associates Limited  
 百泰工程顧問有限公司  
 Babbie Asia Limited



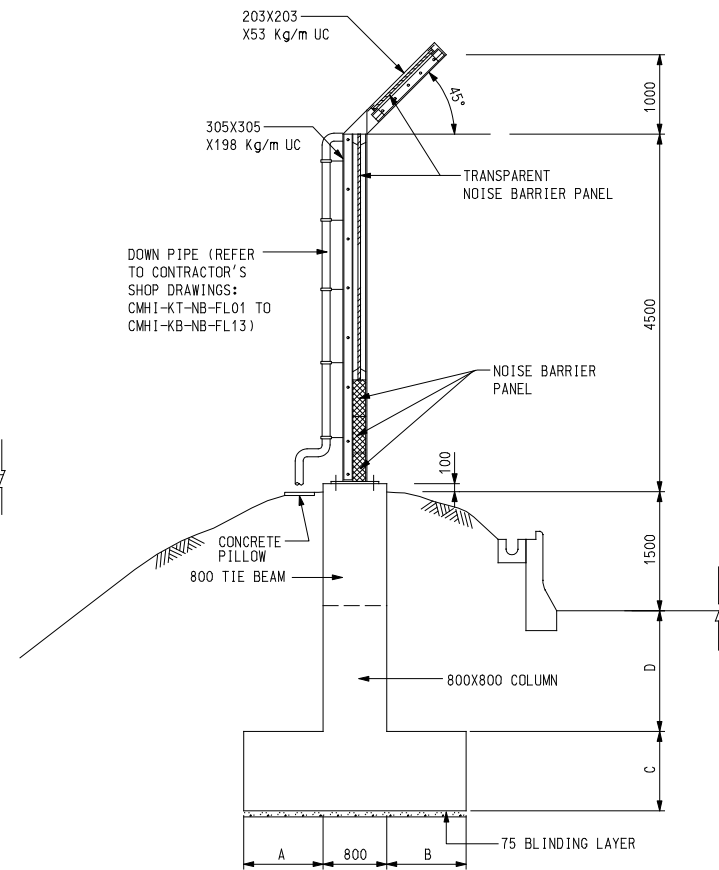
TYPICAL CROSS SECTION OF FOOTING TYPE I  
N.T.S.



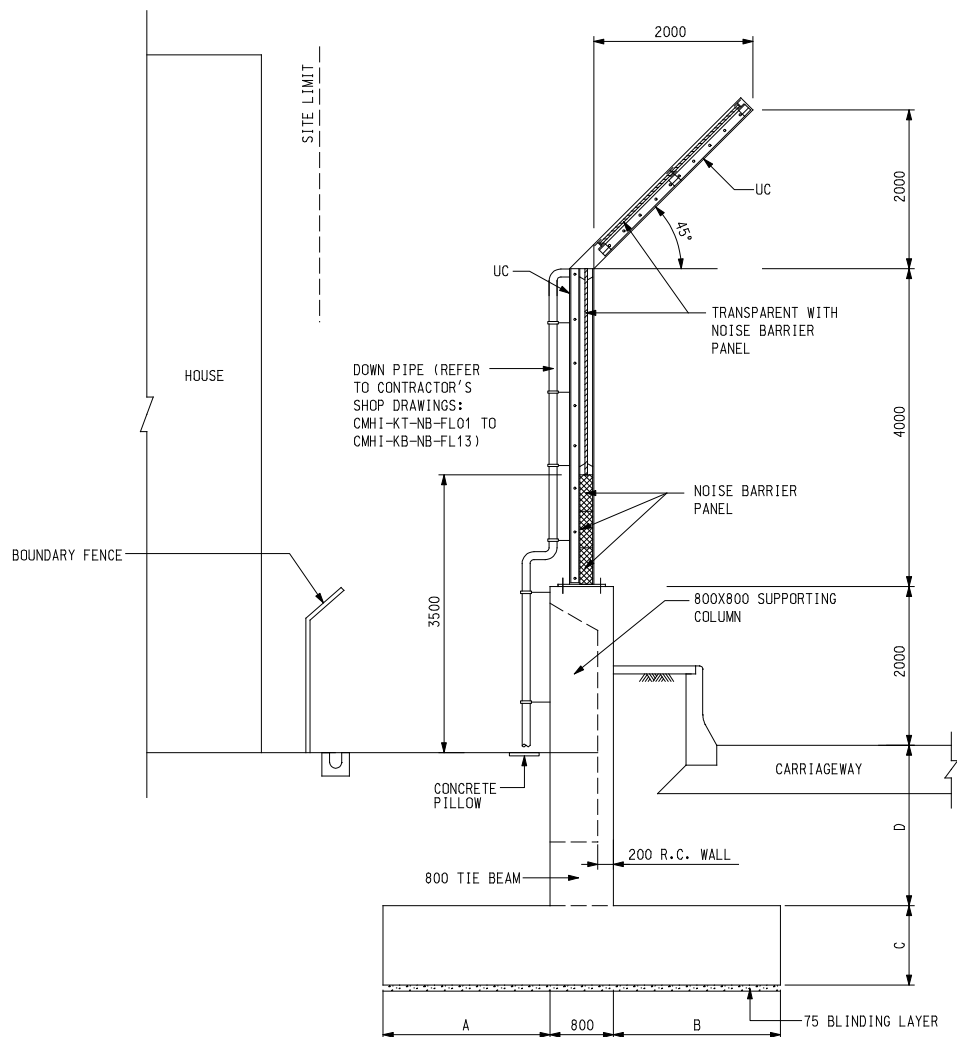
TYPICAL CROSS SECTION OF FOOTING TYPE II  
N.T.S.



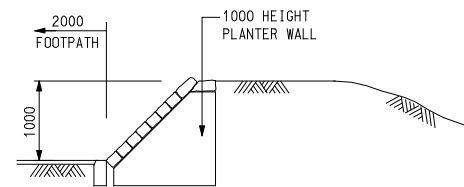
TYPICAL SECTION OF FOOTING TYPE III  
N.T.S.



TYPICAL CROSS SECTION OF FOOTING TYPE IV  
N.T.S.



TYPICAL CROSS SECTION OF FOOTING TYPE VA & VB  
N.T.S.



TYPICAL CROSS SECTION OF FOOTING TYPE VI  
N.T.S.

NOISE BARRIER TYPE	FOOTING TYPE	HEIGHT OF NOISE BARRIER H	DIMENSION			
			A	B	C	D
A	I	1000	800	800	500	2000
A	II	1000	1100	1100	500	2000
B	III	1000	1000	1000	500	1500
C	III	1500	1200	1200	500	1500
D	I	2000	800	800	500	2000
E	III	2000	1200	1200	500	1500
F	II	2500	1700	1700	1000	1500
G	III	2500	1300	1300	500	1500
H	I	3000	1000	2200	500	2000
H	II	3000	1700	1700	1000	1500
J	III	3500	1600	1600	500	1500
K	I	4000	1000	2200	500	2000
L	I	4500	1000	2000	1000	2000
L	II	4500	2000	2500	1000	2000
M	II	5000	2000	2500	1000	2000
N	IV	5500	2200	2200	1000	1500
O	VA	8000	1500	3500	1500	2000
O	VB	8000	1000	4000	1500	3500
P	I	1500	1200	1200	500	1950

NOTES: WIDTH OF FOOTING SHALL BE 2000 EXCEPT THAT FOOTING TYPE VI SHALL BE 3000.

NOTES:

- DIMENSIONS ARE IN MILLIMETERS UNLESS OTHERWISE STATED.
- LEVELS ARE IN METRES AND REFER TO PRINCIPAL DATUM (P.D.).
- ALL EXPOSED EXTERNAL EDGES OF 90° OR LESS WERE TO HAVE A 20X20 CHAMFER UNLESS OTHERWISE STATED.
- GRADE OF CONCRETE:
- FOOTING 40/20  
BLINDING 10/20
- COVER TO REINFORCEMENT:
- FOOTING 50mm  
WALL 50mm
- STEEL TO BE GRADE 43A WELDABLE STRUCTURAL STEEL COMPLYING WITH BS 4360.
- STEELWORK WAS HOT DIP GALVANISED TO BS 729 AFTER FABRICATION.
- WELDING WAS IN ACCORDANCE WITH BS 5135 AND ELECTRODES WERE IN ACCORDANCE WITH BS 639.
- STEEL REINFORCEMENT COMPLIED WITH THE REQUIREMENTS OF CS2 AND WAS BENT IN ACCORDANCE WITH BS 4466.
- REINFORCEMENT NOTATION IS AS FOLLOWS:  
57 T32 - 19 - 150 T (V)  
LOCATION  
SPACING OF BAR  
BAR MARK  
DIAMETER OF BAR  
NOS. OF BAR
- UNLESS OTHERWISE STATED, MINIMUM LAP LENGTH WAS 46 TIMES THE DIAMETER OF THE SMALLER BAR
- CONCRETE FINISHES:  
(I) EXPOSED SURFACE F5  
(II) UNEXPOSED SURFACE F2  
UNFORMED SURFACE  
(I) EXPOSED SURFACE U5  
(II) UNEXPOSED SURFACE U2
- FOOTING WAS FOUNDED ON MATERIAL WITH MINIMUM ALLOWABLE BEARING CAPACITY OF 150KPa.
- THIS DRAWING SHOULD BE READ IN CONJUNCTION WITH DRG. NOS. 2000/18/NB/001R TO 002R.
- STAINLESS STEEL COMPLIED BS1449 AND BS6105.
- ALL GALVANISED STRUCTURAL STEELWORKS WERE PAINTED IN ACCORDANCE WITH PAINTING SYSTEM F OF THE P.S. CLAUSE 18.62.
- NOISE BARRIER & FIXING COMPRISED A PROPRIETARY SYSTEM (MONT BLANC OR SIMILAR).
- THE SOIL UNDERNEATH THE VERGE AREA WAS REMOVED WITHOUT CHECKING THE STABILITY OF THE NOISE BARRIER FOUNDATION.
- THE CONTRACTOR SUBMITTED DESIGN CALCULATION AND SHOP DRAWINGS OF THE NOISE BARRIER ASSOCIATED WITH THE SUPPORTING STEEL FRAME. CERTIFIED BY THE INDEPENDENT CHECKING ENGINEER, TO THE ENGINEER FOR CONSENT.

Approved

Contract No. HY/2000/18

Project

KAM TIN BYPASS

Drawing Title

AS CONSTRUCTED  
NOISE BARRIER DETAILS  
(SHEET 1 OF 3)

Hyd Structure No. (NB89 to NB96)

Drawing No.

2000/18/NB/003R

Scale

AS SHOWN

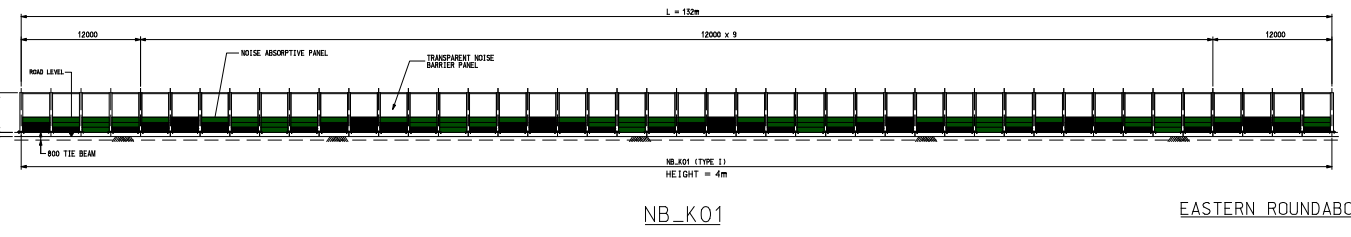
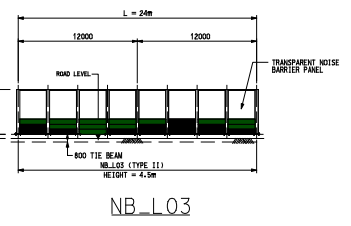
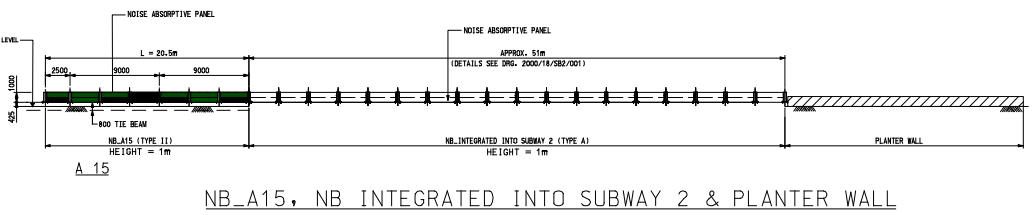
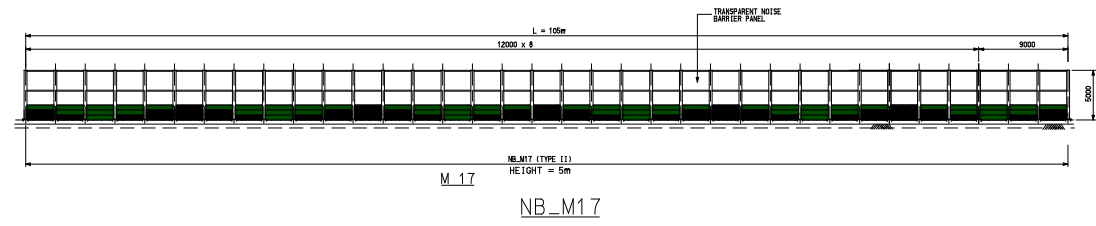
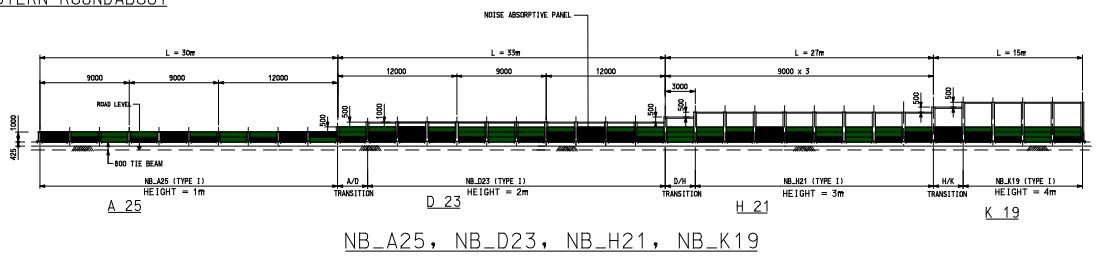
博威工程顧問有限公司  
Binnie Black & Veatch Hong Kong Limited  
施偉拔工程顧問有限公司  
Wilbur Smith Associates Limited  
百泰工程顧問有限公司  
Bobbie Asia Limited

WORK AS EXECUTED

NOTES:

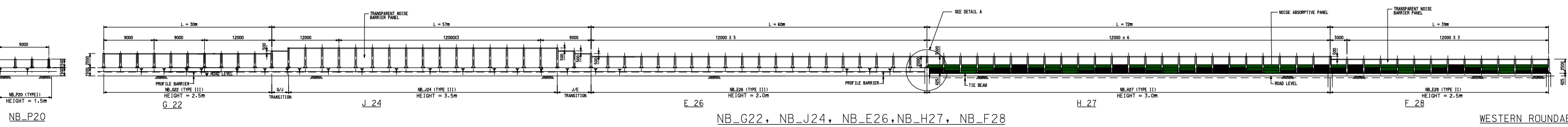
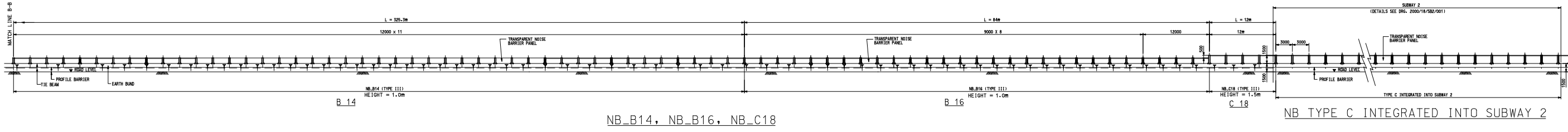
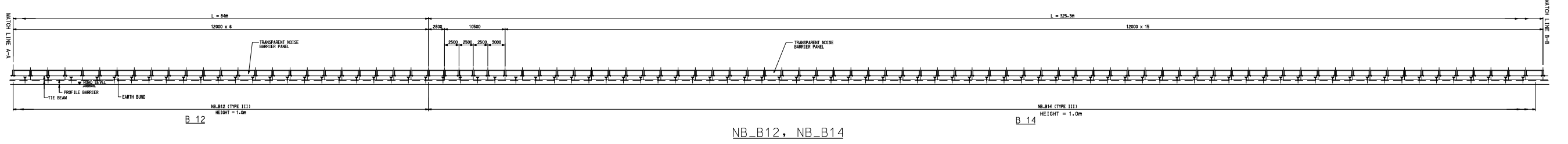
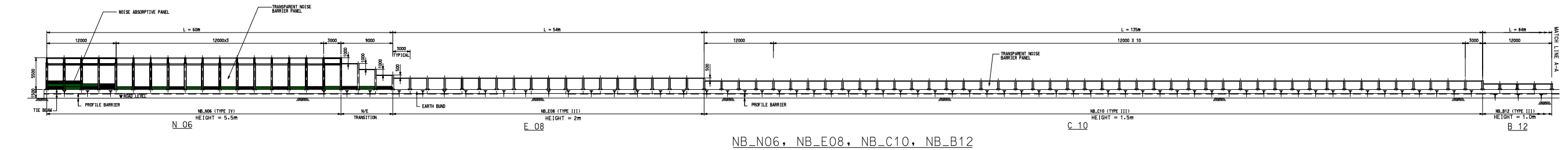
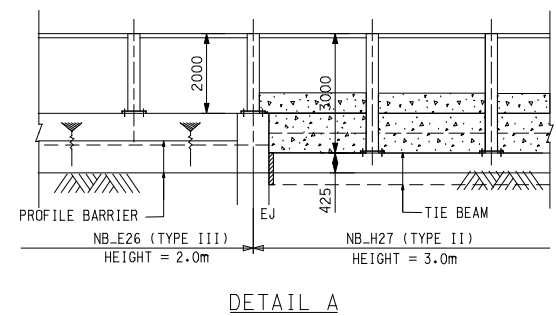
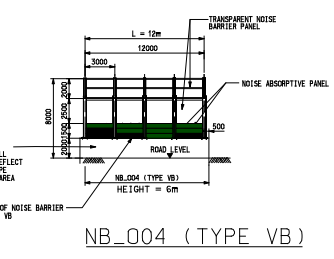
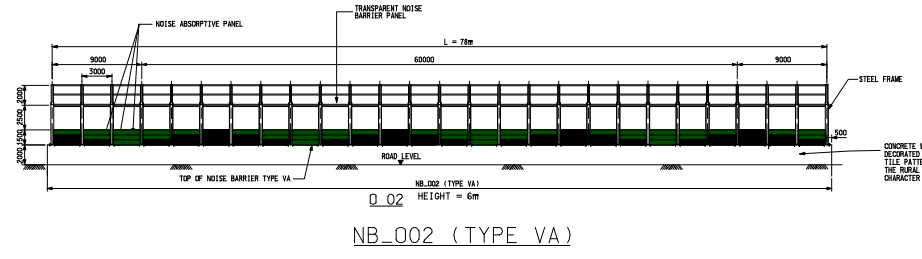
- ALL DIMENSIONS ARE IN MILLIMETRES UNLESS OTHERWISE STATED.
- COLOUR CODE  
 NOISE ABSORPTIVE PANEL  
 TYPE ELEMENTS : RAL 6001  
 RAL 6021  
 STEEL FRAMES : RAL 6020
- THIS DRAWING IS TO BE READ IN CONJUNCTION WITH DRAWINGS: 2000/18/NB/001R-005R.
- THE LENGTHS SHOWN ON THE DRAWING ARE INDICATIVE ONLY.

WESTERN ROUNDABOUT



EASTERN ROUNDABOUT

EASTERN ROUNDABOUT



WESTERN ROUNDABOUT

Approved

Contract No. HY/2000/18

Project

KAM TIN BYPASS

Drawing Title

AS CONSTRUCTED  
 ELEVATION AND COLOUR  
 SCHEME OF NOISE BARRIER

Hyd Structure No.(NB89 to NB96)

Drawing No.

2000/18/NB/006R

Scale

1 : 200

博盛工程顧問有限公司  
 Binnie Black & Veatch Hong Kong Limited  
 施偉拔工程顧問有限公司  
 Wilbur Smith Associates Limited  
 百泰工程顧問有限公司  
 Babbie Asia Limited



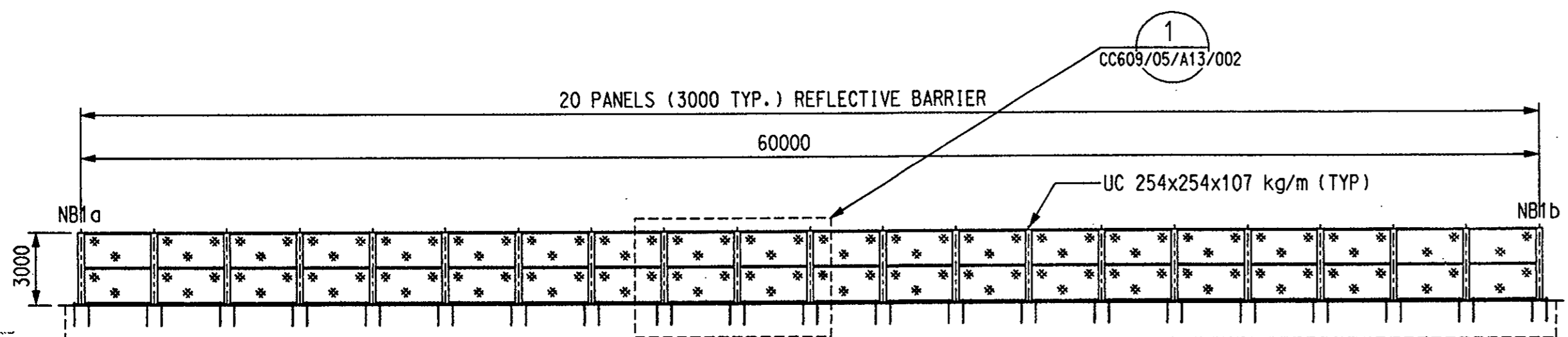
HIGHWAYS  
 DEPARTMENT  
 HONG KONG



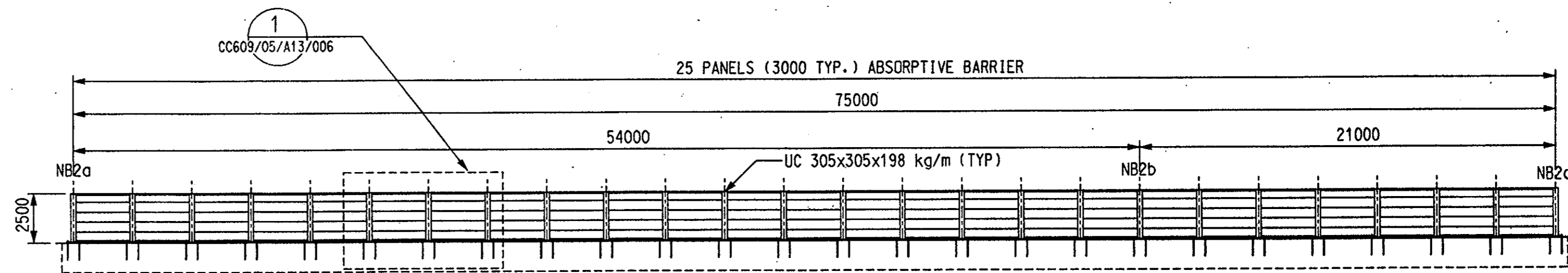


Maps reproduced with permission of the Director of Lands, (C) Hong Kong Government.

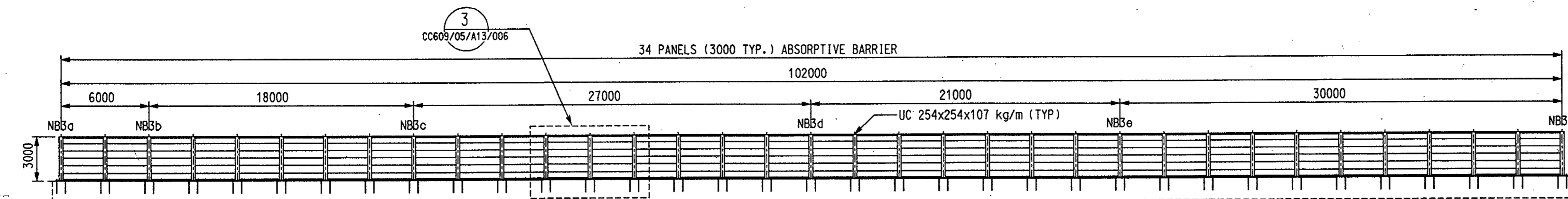
PRINTED BY: CCHW 20 FEB 2004 14:05:30  
FILENAME: f:\cc609\Sub-Cont Dwg\Noise Barrier\05A13001.dgn



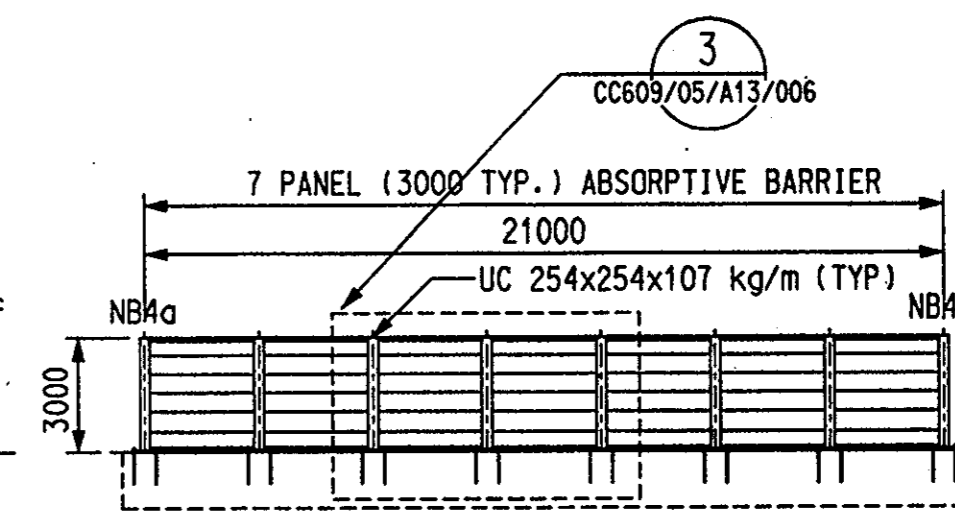
NB1 ELEVATION  
SCALE 1:200



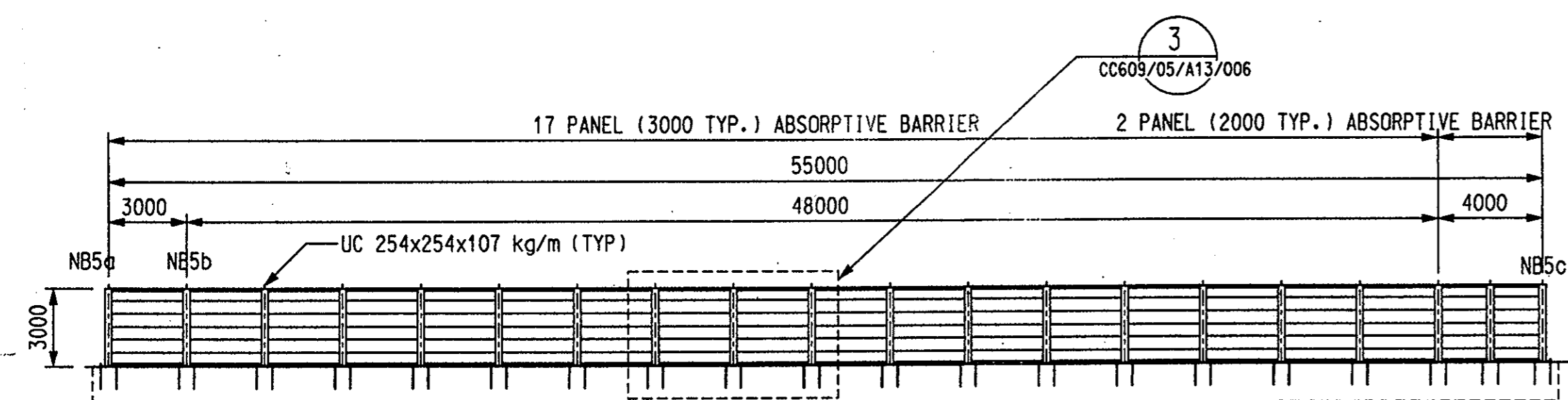
NB2 ELEVATION  
SCALE 1:200



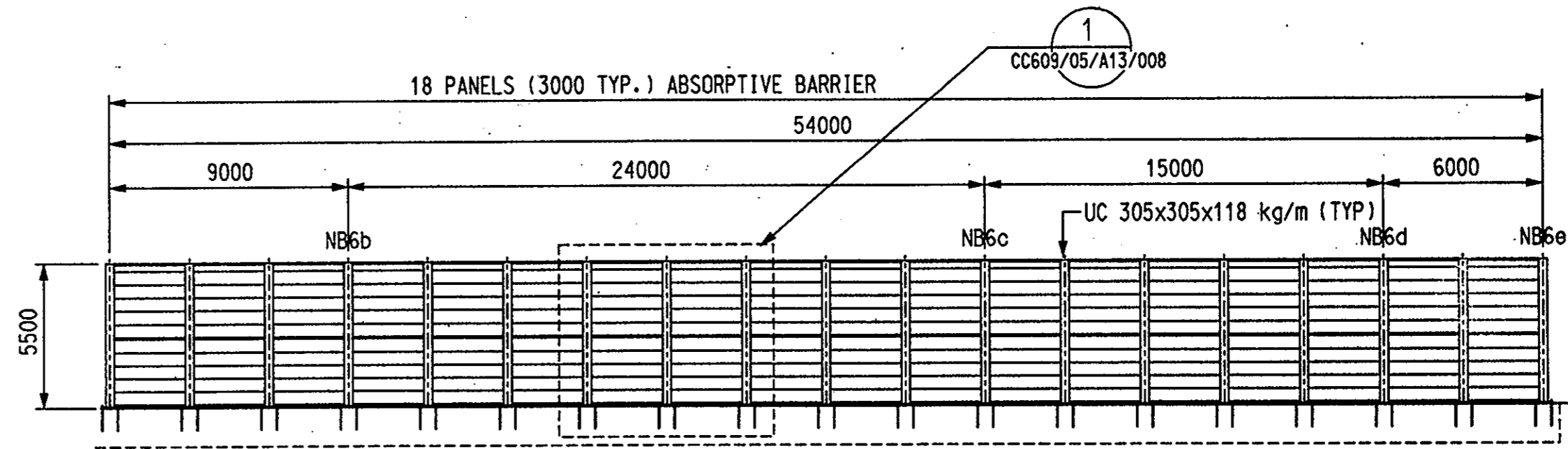
NB3 ELEVATION  
SCALE 1:200



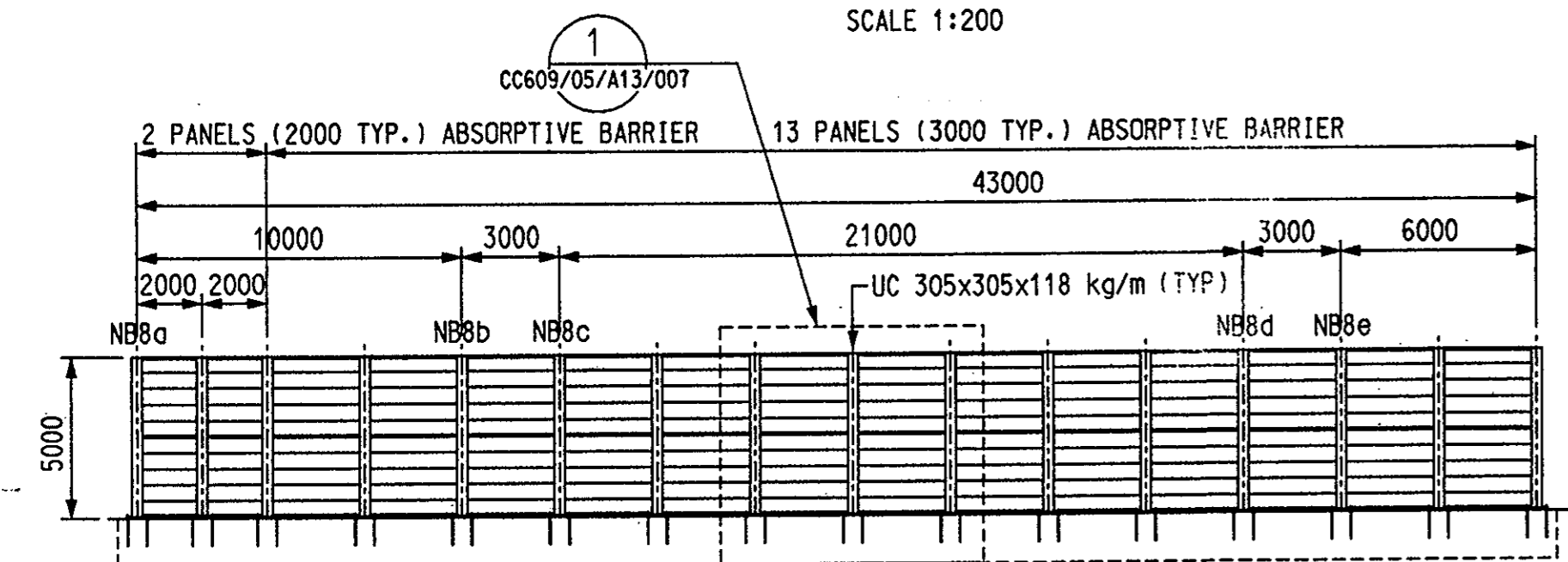
NB4 ELEVATION  
SCALE 1:200



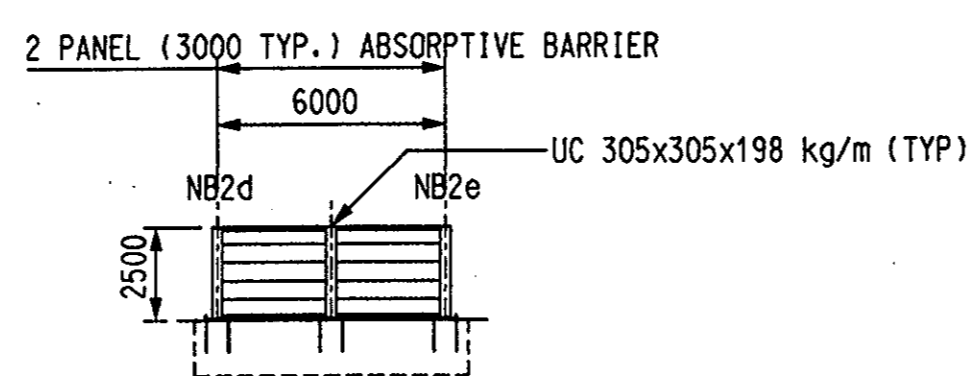
NB5 ELEVATION  
SCALE 1:200



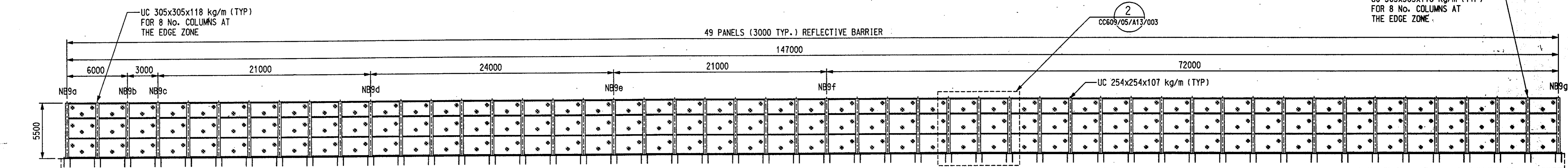
NB6 ELEVATION  
SCALE 1:200



NB8 ELEVATION  
SCALE 1:200



NB2 ELEVATION  
SCALE 1:200



NB9 ELEVATION  
SCALE 1:200

UC 305x305x118 kg/m (TYP)  
FOR 8 No. COLUMNS AT  
THE EDGE ZONE.

**NOTES:**  
1. FOR SETTING OUT DETAIL REFER DWG. CC609/21/C21/025 TO CC609/21/C21/032

**GENERAL NOTES:**  
THE FOLLOWING ASSUMPTIONS ARE USED IN STRUCTURAL DESIGN CALCULATION  
1. THE STRUCTURAL DESIGN OF UC IS IN ACCORDANCE WITH STRUCTURES DESIGN MANUAL FOR HIGHWAYS AND RAILWAYS, HONG KONG - 1997.  
2. THE WIND LOADING IS IN ACCORDANCE WITH THE STRUCTURES DESIGN MAUAL FOR HIGHWAYS AND RAILWAYS, HONG KONG - 1997. THE VALUES OF DRAG COEFFICIENT (C) ARE 1.85 AND THE BASIC WITH PRESSURE IS 2.8 kPa.

3. ALL STEEL MEMBERS ARE GRADE 43A.  
4. CONCRETE GRADE FOR RC PEDESTAL IS GRADE 40.

**LEGEND:**  
\* \* 20mm THK. 'ALTUGLAS' PMMA REFLECTIVE PANEL  
≡≡≡ 125mm THK. 'IAC LTD' ALUMINIUM ABSORPTIVE PANEL

AS-CONSTRUCTED DRAWING  
S. Walker 3/3/4  
CONTRACT REPRESENTATIVE DATE: 16 MAR 2004  
ENGINEER'S REPRESENTATIVE DATE: 16 MAR 2004  
CONSULTANT'S REPRESENTATIVE DATE:



REV	DATE	BY	SUB	APP	DESCRIPTION
△	02FEB2004	MW	CW	RM	AS CONSTRUCTED AS PER ENGINEERS COMMENTS
△	16JAN2004	MW	CW	RM	AS CONSTRUCTED AS PER ENGINEERS COMMENTS
△	06JAN2004	MW	CW	RM	AS CONSTRUCTED
△	10MAR2003	MW	CW	RM	REVISED DRAWING
△	24DEC2002	MW	CW	RM	REVISED DRAWING
△	09NOV2002	MW	CW	RM	REVISED DRAWING
△	26AUG2003	MW	CW	RM	FIRST ISSUE

DESIGNED BY  
R. TSE  
DRAWN BY  
MW  
CHECKED BY  
CW  
IN CHARGE  
NC  
DATE  
26AUG2002



Costain - China Harbour JV  
WEST RAIL COBOD - EASTERN ACCESS ROAD



西鐵 West Rail

Parsons Brinckerhoff (Asia) Ltd.  
Supported by:  
Mounsell, RAJM, Dennis Lou & Ng Chun Man, Der Norske Veritas, MVA, ACLA, Enviro, Townland, Toywood, BUERRI, DCL

WEST RAIL DEPOT AND STATION  
CC609 EASTERN ACCESS ROAD

NOISE BARRIER ELEVATIONS

CADD FILE NO 05A13001.DGN	CADD DATE 26AUG2002
SCALE 1:200	
DRAWING NUMBER CC609/05/A13/001	
SHEET NO -	STAGE CODE / REV Z 6

FULL SIZE A1