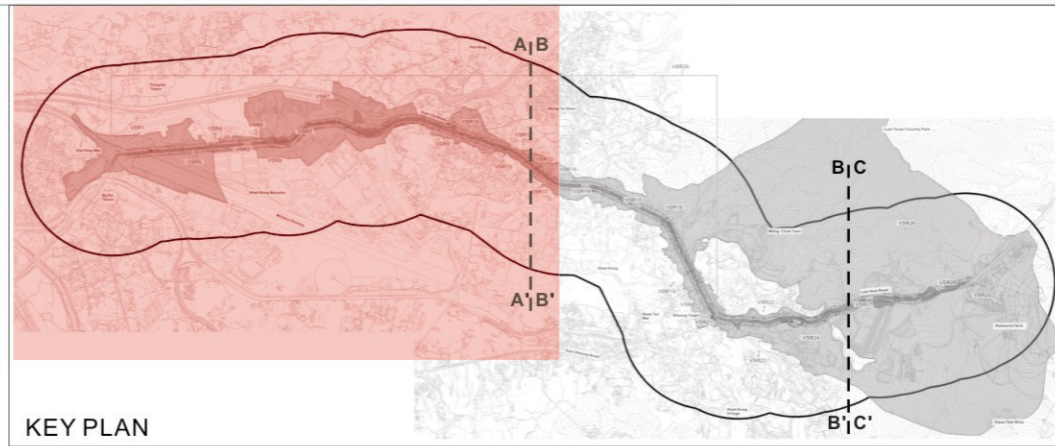


Pang Ka Tsuen Lowland Rural and Low-rise Residential Landscape	
Construction	Operation
Slight	Negligible
Slight	Negligible

Tsat Sing Kong Lowland Rural Landscape	
Construction	Operation
Negligible	Negligible
Negligible	Negligible

Kam Tin Modified Water Course Landscape	
Construction	Operation
Slight	Slight
Slight	Slight

Wang Toi Shan Village Landscape	
Construction	Operation
Slight	Slight
Slight	Slight



Legend

- Study Area
- Proposed Scheme
- LCA Boundary

- Landscape Character Areas**
- LCA1: Tsat Sing Kong Lowland Rural Landscape
 - LCA2: Pang Ka Tsuen Lowland Rural and Low-rise Residential Landscape
 - LCA3: Kam Tin Lowland Rural Landscape
 - LCA4: Shek Kong Barracks Landscape (Shek Kong)
 - LCA5: Wang Toi Shan Village Landscape
 - LCA6: Kam Tin Modified Water Course Landscape
 - LCA7: Shek Kong Lowland Rural Landscape
 - LCA8: Lam Tsuen Country Park Hillside Landscape
 - LCA9: Sheung Tsuen Lowland Rural Landscape
 - LCA10: Shek Kong Barracks Landscape (Shek Kong Tsuen)
 - LCA11: Kwun Yam Shan Miscellaneous Rural Fringe Landscape
 - LCA12: Kwun Yam Shan Upland and Hillside Landscape
 - LCA13: Kam Tin Road and Lam Kam Road Corridor



Landscape Impacts

Shek Kong Barracks		
	Construction	Operation
Unmitigated		Slight Adverse
Mitigated	Moderate to Slight Adverse	Negligible

Client
HIGHWAYS DEPARTMENT WORKS DIVISION

Consultants
Mannings (Asia) Consultants Ltd
in association with
BMT Asia Pacific

ADILIMITED
 LANDSCAPE ARCHITECTURE, URBAN DESIGN AND MASTER PLANNING
 10/F BANGKOK BANK BUILDING, 18 BONHOM STRAND WEST, HONG KONG
 電話: 852 2511 8800 傳真: 852 2511 8801
 香港中環德輔道西18號10樓
 香港中環德輔道西18號10樓
 電話: (A&C) 5-2-1 ANNA 傳真: (A&C) 5-2-1 ANNA

Project
 Agreement No. WD 7/2007
 Upgrading of Remaining Sections of Kam Tin Road & Lam Kam Road
 Environmental Impact Assessment

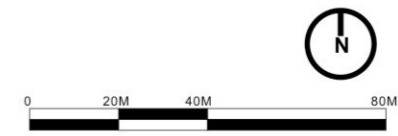
Title
 Impact on Landscape Character

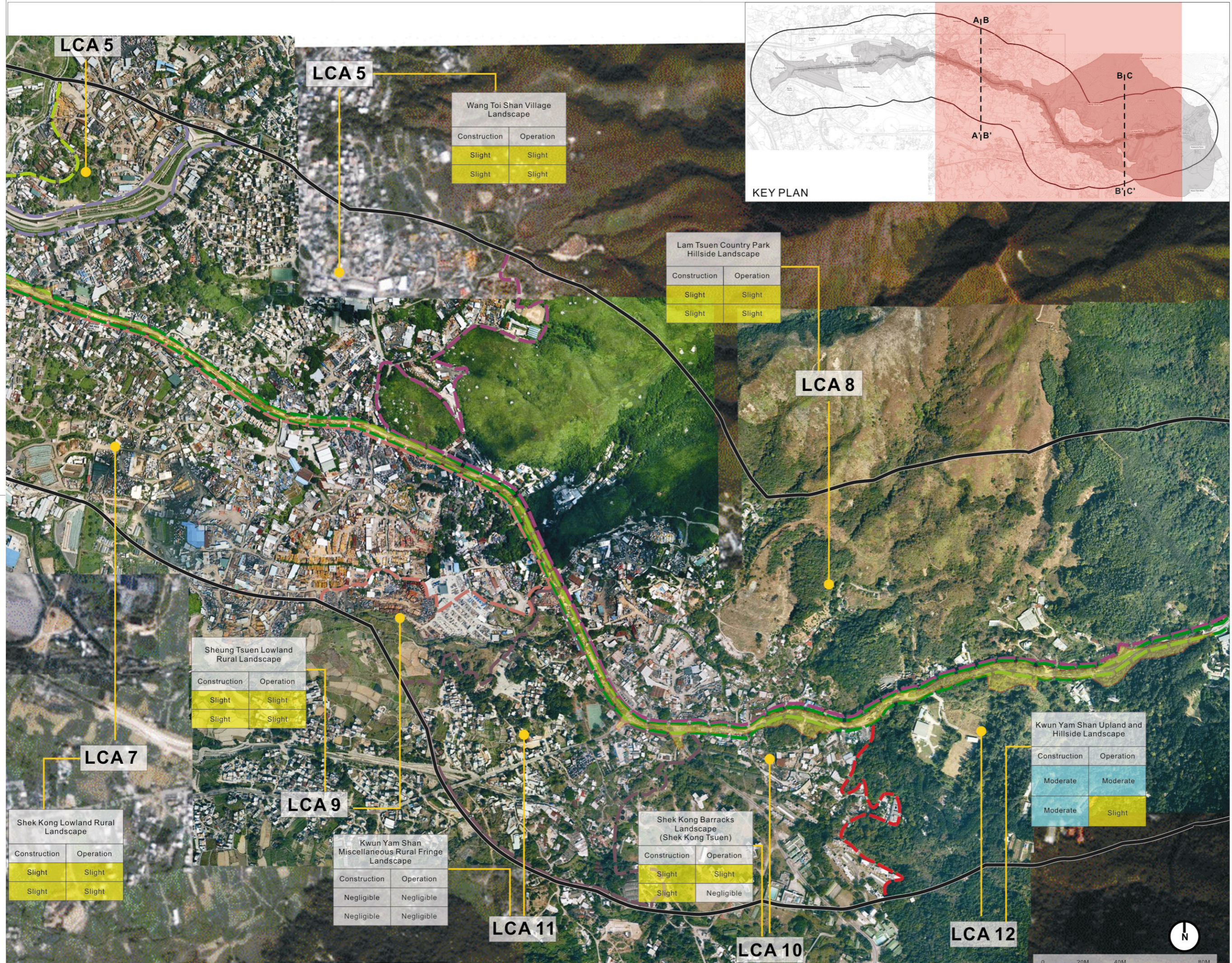
Drawing No.	Revision
Figure 9.10A	B

Kam Tin Lowland Rural Landscape	
Construction	Operation
Negligible	Negligible
Negligible	Negligible

Shek Kong Barracks Landscape (Shek Kong)	
Construction	Operation
Slight	Slight
Slight	Slight

Shek Kong Lowland Rural Landscape	
Construction	Operation
Slight	Slight
Slight	Slight





Legend

- Study Area
- Proposed Scheme
- LCA Boundary

Landscape Character Areas

- LCA1: Tsat Sing Kong Lowland Rural Landscape
- LCA2: Pang Ka Tsuen Lowland Rural and Low-rise Residential Landscape
- LCA3: Kam Tin Lowland Rural Landscape
- LCA4: Shek Kong Barracks Landscape (Shek Kong)
- LCA5: Wang Toi Shan Village Landscape
- LCA6: Kam Tin Modified Water Course Landscape
- LCA7: Shek Kong Lowland Rural Landscape
- LCA8: Lam Tsuen Country Park Hillside Landscape
- LCA9: Sheung Tsuen Lowland Rural Landscape
- LCA10: Shek Kong Barracks Landscape (Shek Kong Tsuen)
- LCA11: Kwun Yam Shan Miscellaneous Rural Fringe Landscape
- LCA12: Kwun Yam Shan Upland and Hillside Landscape
- LCA13: Kam Tin Road and Lam Kam Road Corridor

Landscape Impacts

			Shek Kong Barracks	
			Construction	Operation
Unmitigated				Slight Adverse
Mitigated	Moderate to Slight Adverse			Negligible

Client
 HIGHWAYS DEPARTMENT WORKS DIVISION

Consultants
Mannings (Asia) Consultants Ltd
in association with
BMT Asia Pacific

ADI LIMITED
 LANDSCAPE ARCHITECTURE, URBAN DESIGN AND MASTER PLANNING
 10/F BANGKOK BANK BUILDING, 18 BONHOM STRAND WEST, HONG KONG
 電話: 852 2111 8833 傳真: 852 2111 8830
 地址: 香港德輔道西18號10樓 ADI 有限公司
 地址: 香港德輔道西18號10樓 ADI 有限公司
 地址: 香港德輔道西18號10樓 ADI 有限公司
 地址: 香港德輔道西18號10樓 ADI 有限公司

Project
 Agreement No. WD 7/2007
 Upgrading of Remaining Sections
 of Kam Tin Road & Lam Kam Road
 Environmental Impact Assessment

Title
 Impact on Landscape Character

Wang Toi Shan Village Landscape

Construction	Operation
Slight	Slight
Slight	Slight

Lam Tsuen Country Park Hillside Landscape

Construction	Operation
Slight	Slight
Slight	Slight

Sheung Tsuen Lowland Rural Landscape

Construction	Operation
Slight	Slight
Slight	Slight

Kwun Yam Shan Upland and Hillside Landscape

Construction	Operation
Moderate	Moderate
Moderate	Slight

Shek Kong Lowland Rural Landscape

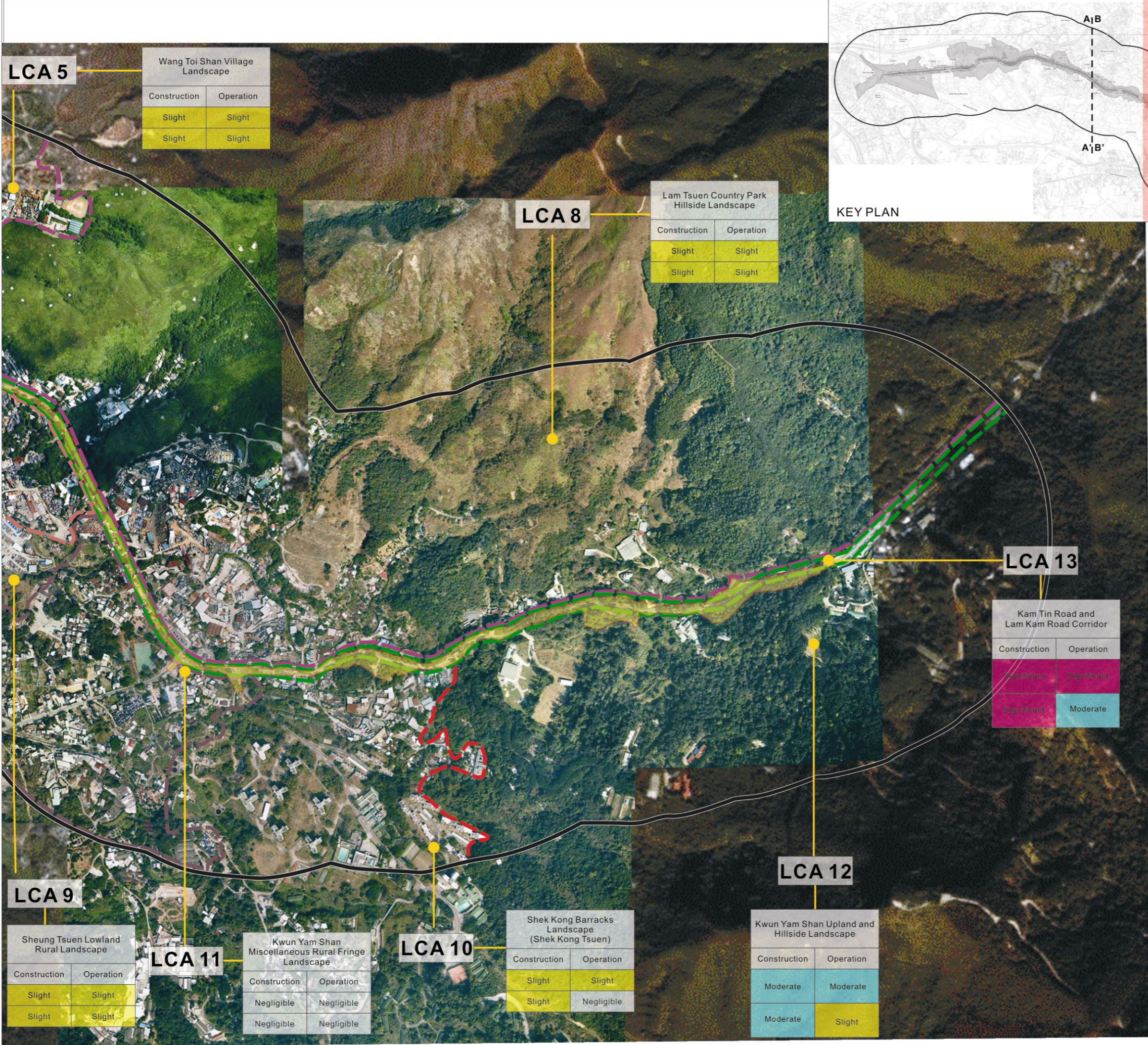
Construction	Operation
Slight	Slight
Slight	Slight

Kwun Yam Shan Miscellaneous Rural Fringe Landscape

Construction	Operation
Negligible	Negligible
Negligible	Negligible

Shek Kong Barracks Landscape (Shek Kong Tsuen)

Construction	Operation
Slight	Slight
Slight	Negligible



LCA 5
Wang Toi Shan Village Landscape

Construction	Operation
Slight	Slight
Slight	Slight

LCA 8
Lam Tsuen Country Park Hillside Landscape

Construction	Operation
Slight	Slight
Slight	Slight

LCA 13
Kam Tin Road and Lam Kam Road Corridor

Construction	Operation
Significant	Significant
Significant	Moderate

LCA 9
Sheung Tsuen Lowland Rural Landscape

Construction	Operation
Slight	Slight
Slight	Slight

LCA 11
Kwun Yam Shan Miscellaneous Rural Fringe Landscape

Construction	Operation
Negligible	Negligible
Negligible	Negligible

LCA 10
Shek Kong Barracks Landscape (Shek Kong Tsuen)

Construction	Operation
Slight	Slight
Slight	Negligible

LCA 12
Kwun Yam Shan Upland and Hillside Landscape

Construction	Operation
Moderate	Moderate
Moderate	Slight

Legend

- Study Area
- Proposed Scheme
- LCA Boundary

- Landscape Character Areas**
- LCA1: Tsat Sing Kong Lowland Rural Landscape
 - LCA2: Pang Ka Tsuen Lowland Rural and Low-rise Residential Landscape
 - LCA3: Kam Tin Lowland Rural Landscape
 - LCA4 : Shek Kong Barracks Landscape (Shek Kong)
 - LCA5: Wang Toi Shan Village Landscape
 - LCA6: Kam Tin Modified Water Course Landscape
 - LCA7: Shek Kong Lowland Rural Landscape
 - LCA8: Lam Tsuen Country Park Hillside Landscape
 - LCA9: Sheung Tsuen Lowland Rural Landscape
 - LCA10: Shek Kong Barracks Landscape (Shek Kong Tsuen)
 - LCA11: Kwun Yam Shan Miscellaneous Rural Fringe Landscape
 - LCA12: Kwun Yam Shan Upland and Hillside Landscape
 - LCA13: Kam Tin Road and Lam Kam Road Corridor

Landscape Impacts

		Shek Kong Barracks	
		Construction	Operation
Unmitigated	Significant to Moderate Adverse		Slight Adverse
	Moderate to Slight Adverse		Negligible
Mitigated			

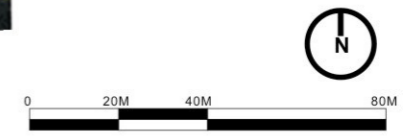
Client
 HIGHWAYS DEPARTMENT WORKS DIVISION

Consultants
Mannings (Asia) Consultants Ltd
in association with
BMT Asia Pacific

ADI LIMITED
 LANDSCAPE ARCHITECTURE, URBAN DESIGN AND MASTER PLANNING
 10/F BANGKOK BANK BUILDING, 18 BONHAY STRAND WEST, HONG KONG
 香港中環德輔道西18號10樓
 香港中環德輔道西18號10樓
 香港中環德輔道西18號10樓

Project
 Agreement No. WD 7/2007
 Upgrading of Remaining Sections of Kam Tin Road & Lam Kam Road Environmental Impact Assessment

Title
 Impact on Landscape Character



Drawing No. Figure 9.10C	Revision B
-----------------------------	---------------