

- Legend**
-  Study Area
  -  Proposed Scheme
- Landscape Resources**
-  LR1 Major Road
  -  LR2 Agricultural Fields
  -  LR3 Road Side Plantation
  -  LR4 Village Settlements
  -  LR5 Hillside with Mixed Woodland
  -  LR6 Developed Rural Land
  -  LR7 Grassland / Shrubland Mosaic
  -  LR8 Modified Watercourses
  -  LR9 Open Spaces and Sports Fields

Client  
 HIGHWAYS DEPARTMENT WORKS DIVISION

Consultants  
**Mannings (Asia) Consultants Ltd**  
*in association with*  
**BMT Asia Pacific**

 ADI LIMITED  
 LANDSCAPE ARCHITECTURE, URBAN DESIGN AND MASTER PLANNING  
 13/F BANGKOK BANK BUILDING, 18 BORNHAYM STRAND WEST, HONG KONG  
 電話: 852 2131 8833 傳真: 852 2131 8800  
 地址: 香港中環皇后大道西18號13樓  
 香港中環皇后大道西18號13樓  
 電話: (862) 2-21-8833 傳真: (862) 2-21-8800

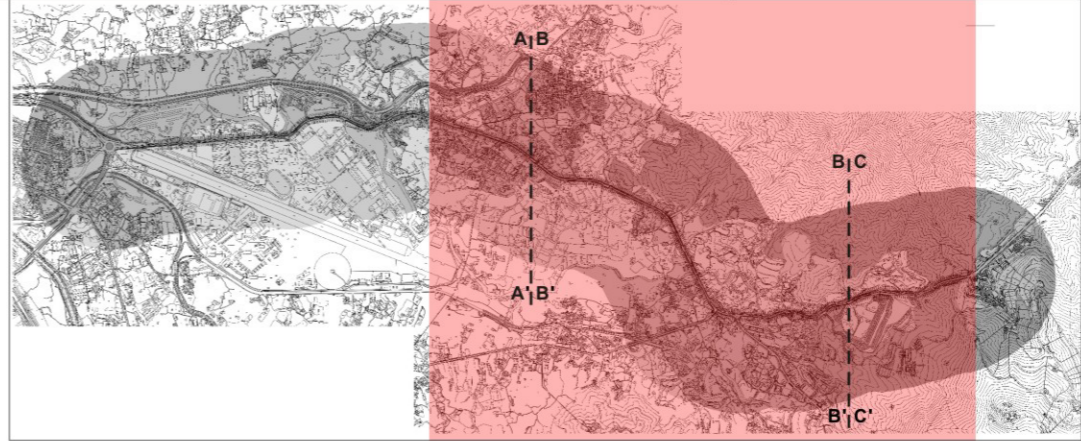
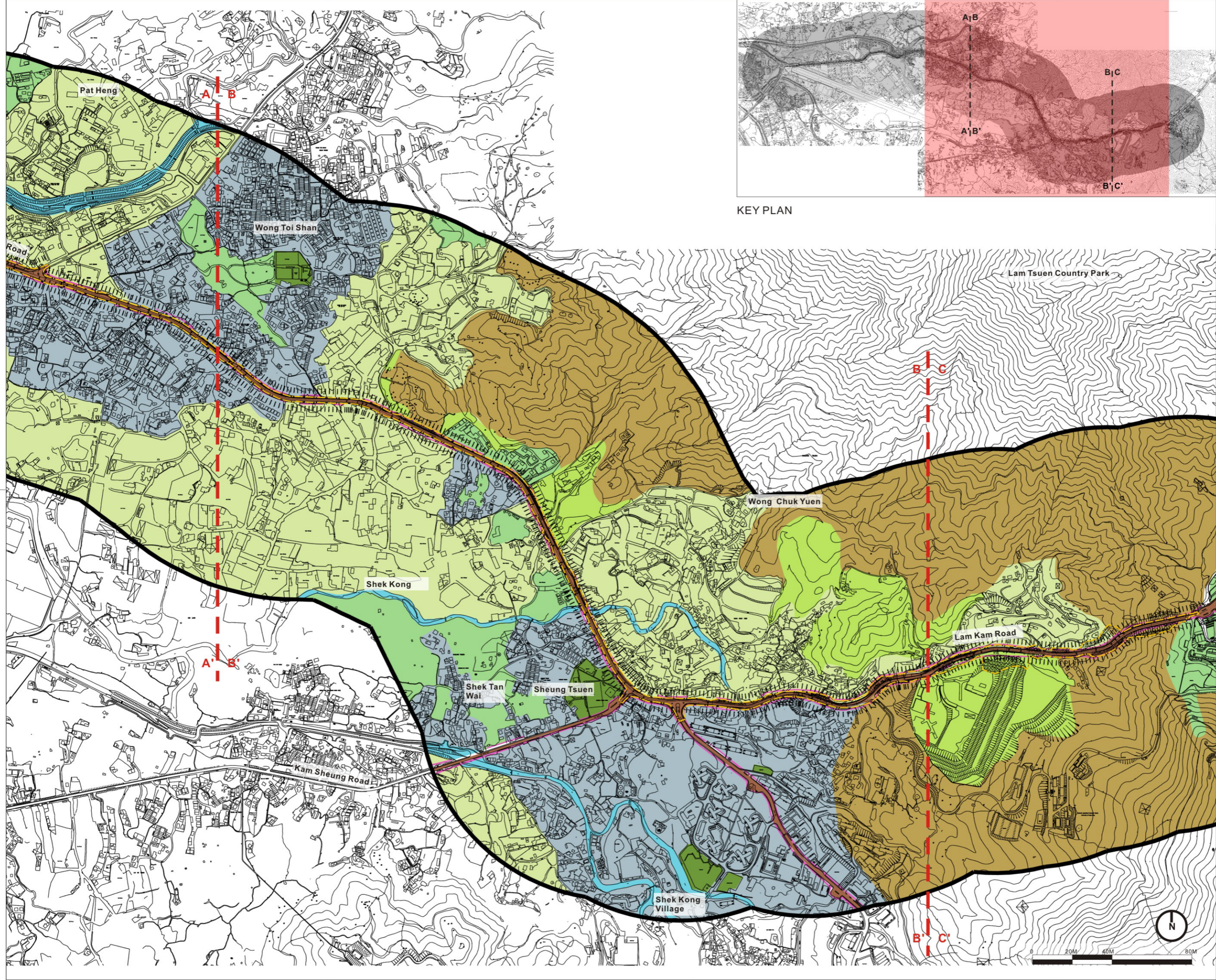
Project  
 Agreement No. WD 7/2007  
 Upgrading of Remaining Sections  
 of Kam Tin Road & Lam Kam Road  
 Environmental Impact Assessment

Title  
 Landscape Resource

Drawing No.  
 Figure 9.2A



Revision  
 A





KEY PLAN

**Legend**

-  Study Area
-  Proposed Scheme

**Landscape Resources**

-  LR1 Major Road
-  LR2 Agricultural Fields
-  LR3 Road Side Plantation
-  LR4 Village Settlements
-  LR5 Hillside with Mixed Woodland
-  LR6 Developed Rural Land
-  LR7 Grassland / Shrubland Mosaic
-  LR8 Modified Watercourses
-  LR9 Open Spaces and Sports Fields

Client  
 HIGHWAYS DEPARTMENT WORKS DIVISION

Consultants  
**Mannings (Asia) Consultants Ltd**  
*in association with*  
**BMT Asia Pacific**

 ADI LIMITED  
 LANDSCAPE ARCHITECTURE, URBAN DESIGN AND MASTER PLANNING  
 13/F BANGKOK BANK BUILDING, 18 BONHOM STRAND WEST, HONG KONG  
 TELEPHONE 2131 8831 FACSIMILE 2131 8830  
 地址: 香港中環德輔道西18號13樓  
 電話: (852) 2131 8831 傳真: (852) 2131 8830

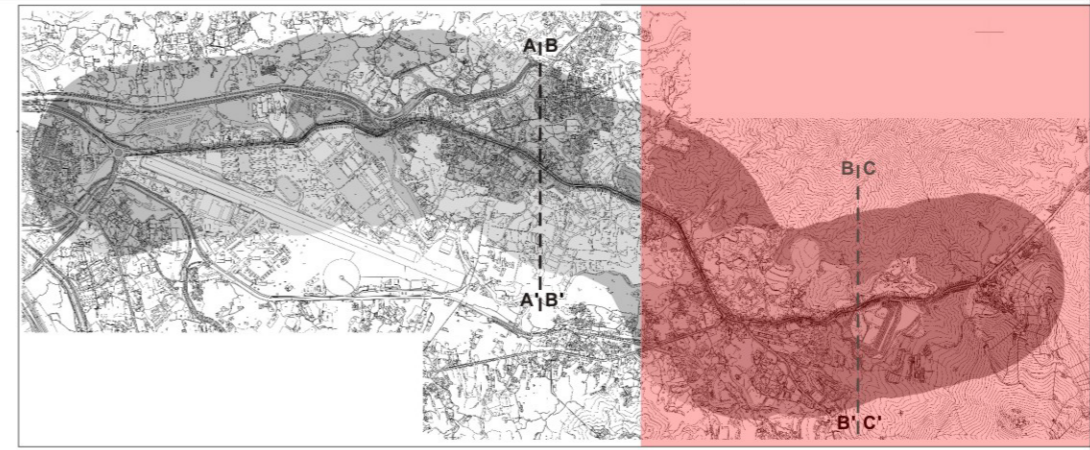
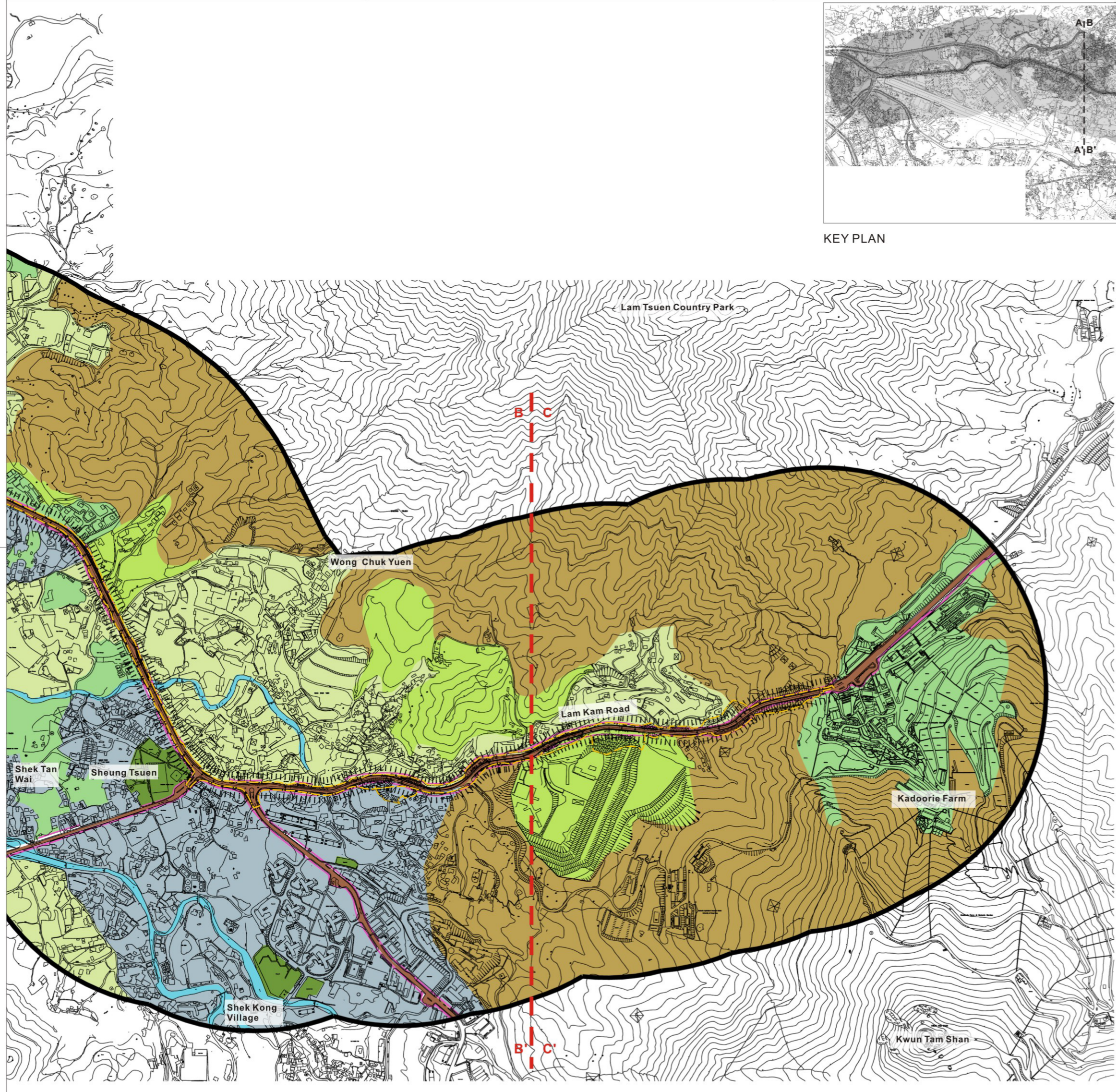
Project  
 Agreement No. WD 7/2007  
 Upgrading of Remaining Sections  
 of Kam Tin Road & Lam Kam Road  
 Environmental Impact Assessment

Title  
 Landscape Resource

Drawing No. Figure 9.2B  
 Revision A







KEY PLAN

**Legend**

- Study Area
- Proposed Scheme

**Landscape Resources**

- LR1 Major Road
- LR2 Agricultural Fields
- LR3 Road Side Plantation
- LR4 Village Settlements
- LR5 Hillside with Mixed Woodland
- LR6 Developed Rural Land
- LR7 Grassland / Shrubland Mosaic
- LR8 Modified Watercourses
- LR9 Open Spaces and Sports Fields

Client  
 HIGHWAYS DEPARTMENT WORKS DIVISION

Consultants  
**Mannings (Asia) Consultants Ltd**  
*in association with*  
**BMT Asia Pacific**

ADI LIMITED  
 LANDSCAPE ARCHITECTURE, URBAN DESIGN AND MASTER PLANNING  
 13/F BANGKOK BANK BUILDING, 18 BONHAY STRAND WEST, HONG KONG  
 電話: 852 2511 8800  
 傳真: 852 2511 8801  
 香港專業建築師學會會員, 香港測量師學會會員, 香港園藝師學會會員  
 香港土地測量師學會會員, 香港建築師學會會員, 香港工程師學會會員  
 香港測量師學會會員, 香港測量師學會會員, 香港測量師學會會員  
 香港測量師學會會員, 香港測量師學會會員, 香港測量師學會會員

Project  
 Agreement No. WD 7/2007  
 Upgrading of Remaining Sections  
 of Kam Tin Road & Lam Kam Road  
 Environmental Impact Assessment

Title  
 Landscape Resource

Drawing No. Figure 9.2C  
 Revision A

