

0 200 400m

Rev.	Description of Revision	Date	Chk.

--	--	--	--

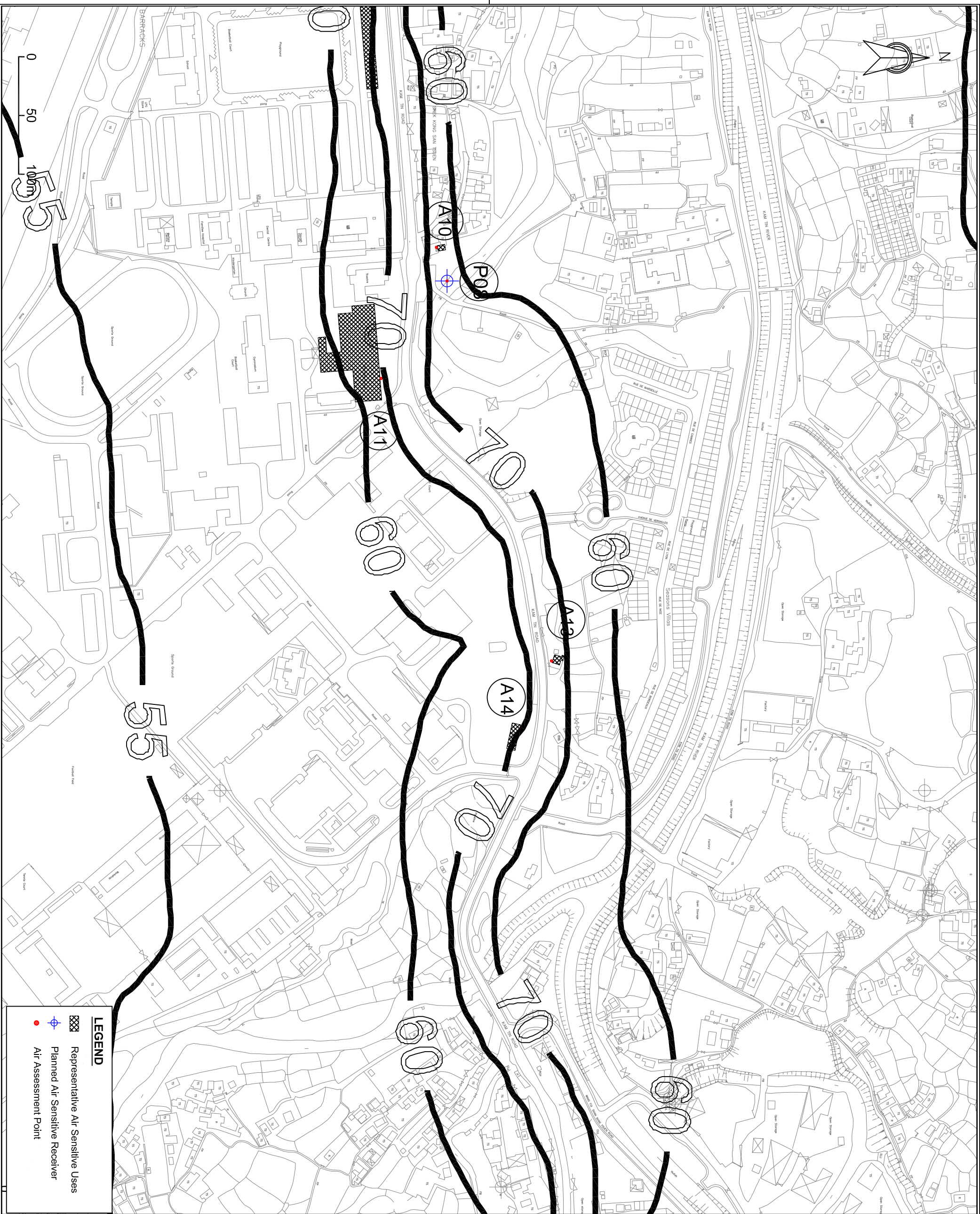
Client
HIGHWAYS DEPARTMENT WORKS DIVISION

Consultants
Mannings (Asia) Consultants Ltd
In association with
BMT Asia Pacific

Project
 Agreement No. WD 7/2007
 Upgrading of Remaining Sections of Kam Tin Road & Lam Kam Road Environmental Impact Assessment

Title
 Maximum Daily Average NO2 Contours at 1.5 m above ground (µg/m³) (Index)

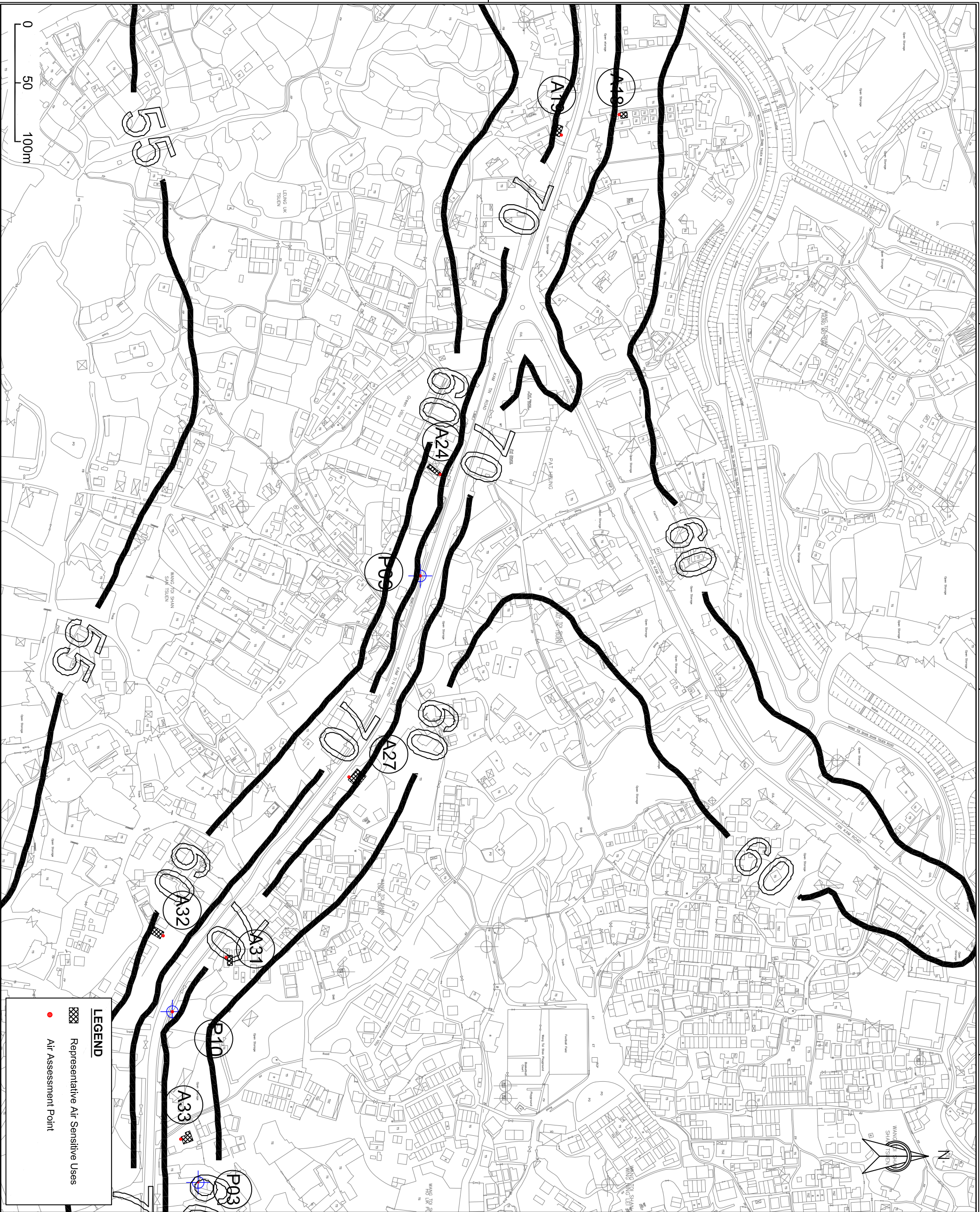
Drawing No.	Revision
Figure 3.3	0





LEGEND	
	Representative Air Sensitive Uses
	Planned Air Sensitive Receiver
	Air Assessment Point

Rev.	Description of Revision	Date	Chk.

<p>Client</p> <p>HIGHWAYS DEPARTMENT WORKS DIVISION</p>	<p>Consultants</p> <p>Mannings (Asia) Consultants Ltd <i>In association with</i> BMT Asia Pacific</p>
<p>Project</p> <p>Agreement No. WD 7/2007 Upgrading of Remaining Sections of Kam Tin Road & Lam Kam Road Environmental Impact Assessment</p>	
<p>Title</p> <p>Maximum Daily Average NO2 Contours at 1.5 m above ground (µg/m³) (Sheet 2 of 6)</p>	
<p>Drawing No.</p> <p>Figure 3.3b</p>	<p>Revision</p> <p>0</p>

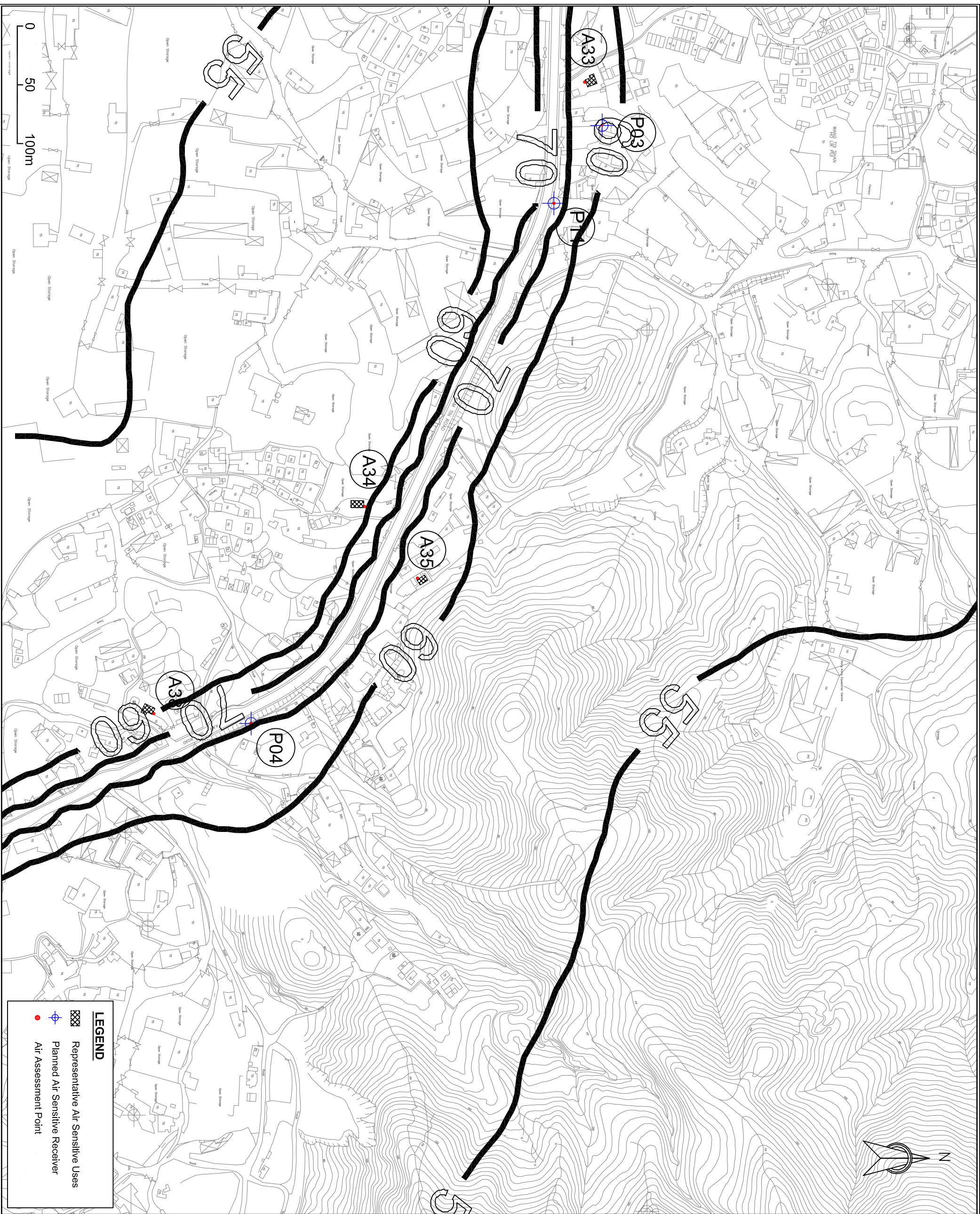


LEGEND

-  Representative Air Sensitive Uses
-  Air Assessment Point

Rev.	Description of Revision	Date	Chk.

<p>Client</p> <p>HIGHWAYS DEPARTMENT WORKS DIVISION</p>	<p>Consultants</p> <p>Mannings (Asia) Consultants Ltd <i>In association with</i> BMT Asia Pacific</p>
<p>Project</p> <p>Agreement No. WD 7/2007 Upgrading of Remaining Sections of Kam Tin Road & Lam Kam Road Environmental Impact Assessment</p>	
<p>Title</p> <p>Maximum Daily Average NO₂ Contours at 1.5 m above ground (µg/m³) (Sheet 3 of 6)</p>	
<p>Drawing No.</p> <p>Figure 3.3c</p>	<p>Revision</p> <p>0</p>



Rev.	Description of Revision	Date	Chk.

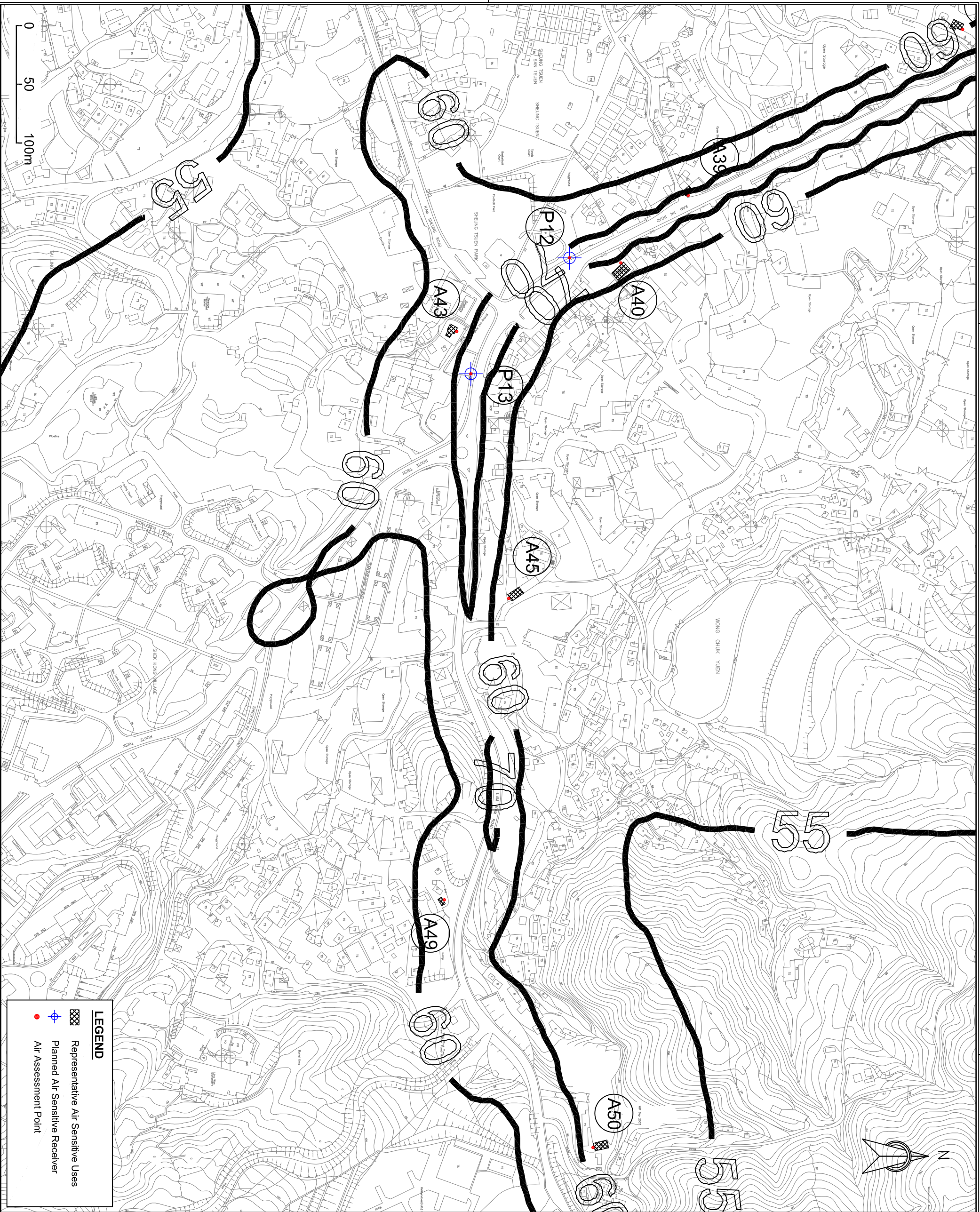
Client
HIGHWAYS DEPARTMENT WORKS DIVISION

Consultants
Mannings (Asia) Consultants Ltd
In association with
BMT Asia Pacific

Project
 Agreement No. WD 7/2007
 Upgrading of Remaining Sections of Kam Tin Road & Lam Kam Road Environmental Impact Assessment

Title
 Maximum Daily Average NO2 Contours at 1.5 m above ground ($\mu\text{g}/\text{m}^3$) (Sheet 4 of 6)

Drawing No. Figure 3.3d	Revision 0
----------------------------	---------------



Rev.	Description of Revision	Date	Chk.

Client	HIGHWAYS DEPARTMENT WORKS DIVISION
Consultants	Mannings (Asia) Consultants Ltd <i>In association with</i> BMT Asia Pacific
Project	Agreement No. WD 7/2007 Upgrading of Remaining Sections of Kam Tin Road & Lam Kam Road Environmental Impact Assessment
Title	Maximum Daily Average NO ₂ Contours at 1.5 m above ground (µg/m ³) (Sheet 5 of 6)
Drawing No.	Figure 3.3e
Revision	0

Client
HIGHWAYS DEPARTMENT WORKS DIVISION

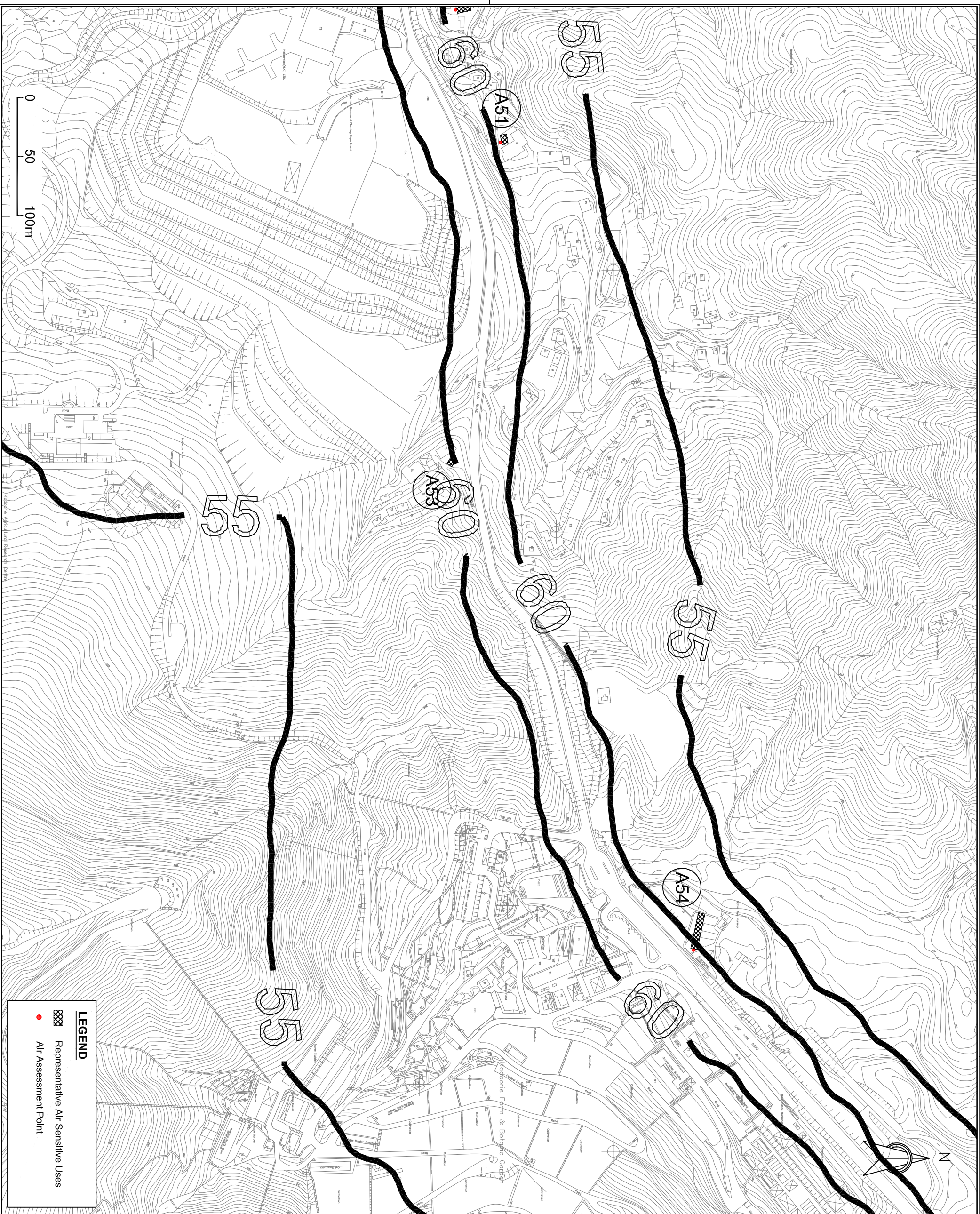
Consultants
Mannings (Asia) Consultants Ltd
In association with
BMT Asia Pacific

Project
Agreement No. WD 7/2007
Upgrading of Remaining Sections of Kam Tin Road & Lam Kam Road
Environmental Impact Assessment



Title
Maximum Daily Average NO₂ Contours at 1.5 m above ground (µg/m³)
(Sheet 5 of 6)

Drawing No.
Figure 3.3e

Revision
0



LEGEND

-  Representative Air Sensitive Uses
-  Air Assessment Point

Rev.	Description of Revision	Date	Chk.

Client

 HIGHWAYS
 DEPARTMENT
 WORKS DIVISION

Consultants
Mannings (Asia) Consultants Ltd
In association with
BMT Asia Pacific

Project
 Agreement No. WD 7/2007
 Upgrading of Remaining Sections
 of Kam Tin Road & Lam Kam Road
 Environmental Impact Assessment

Title
 Maximum Daily Average NO2 Contours
 at 1.5 m above ground (µg/m³)
 (Sheet 6 of 6)

Drawing No. Figure 3.3f	Revision 0
----------------------------	---------------