

0 200 400m

Rev.	Description of Revision	Date	Chk.

Client  
 **HIGHWAYS DEPARTMENT WORKS DIVISION**

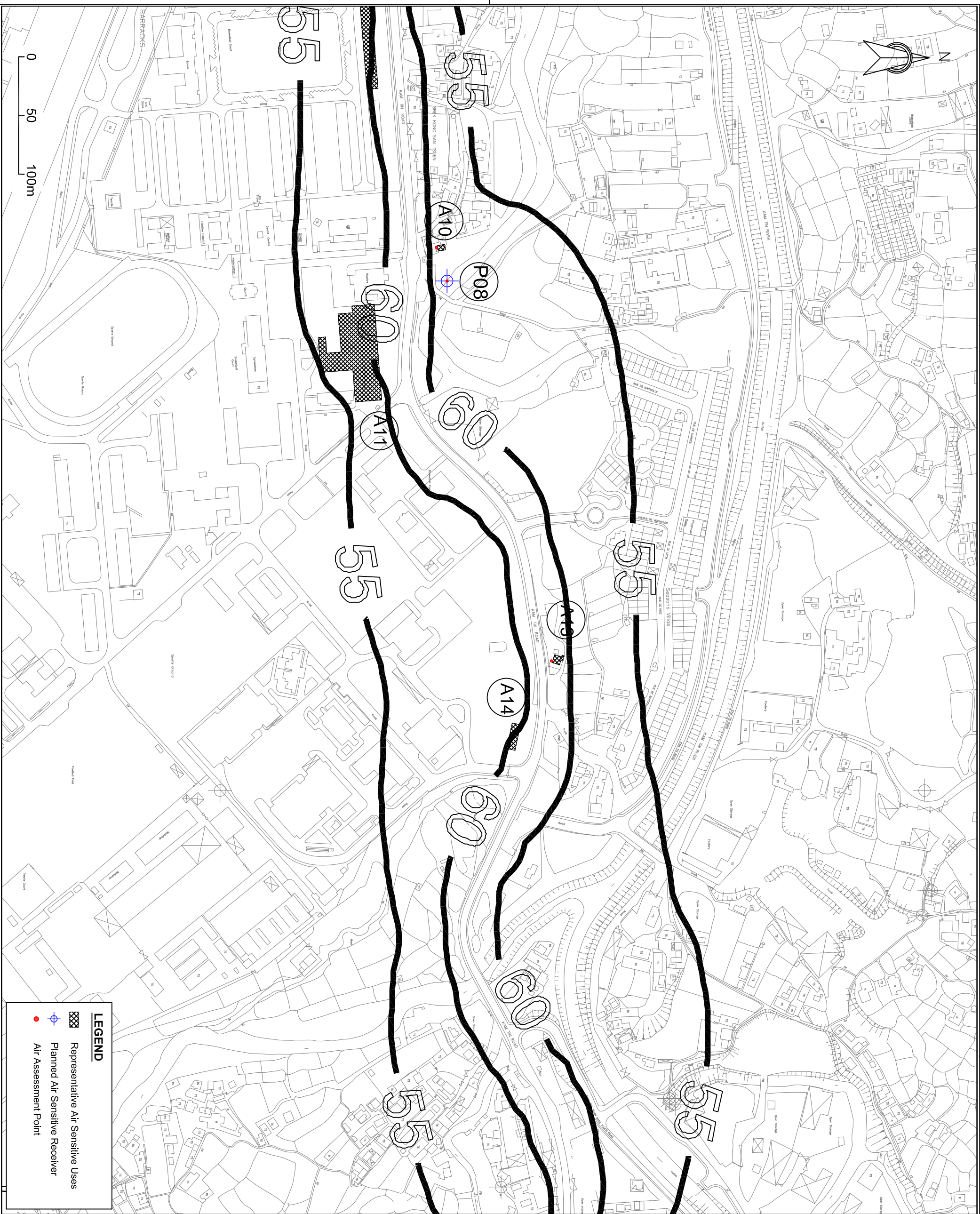
Consultants  
**Mannings (Asia) Consultants Ltd**  
*In association with*  
**BMT Asia Pacific**

Project  
 Agreement No. WD 7/2007  
 Upgrading of Remaining Sections of Kam Tin Road & Lam Kam Road  
 Environmental Impact Assessment




Title  
 Maximum Daily Average RSP Contours at 1.5 m above ground (µg/m<sup>3</sup>) (Index)

Drawing No.	Revision
Figure 3.4	0





**LEGEND**

	Representative Air Sensitive Uses
	Planned Air Sensitive Receiver
	Air Assessment Point

Rev.	Description of Revision	Date	Chk.

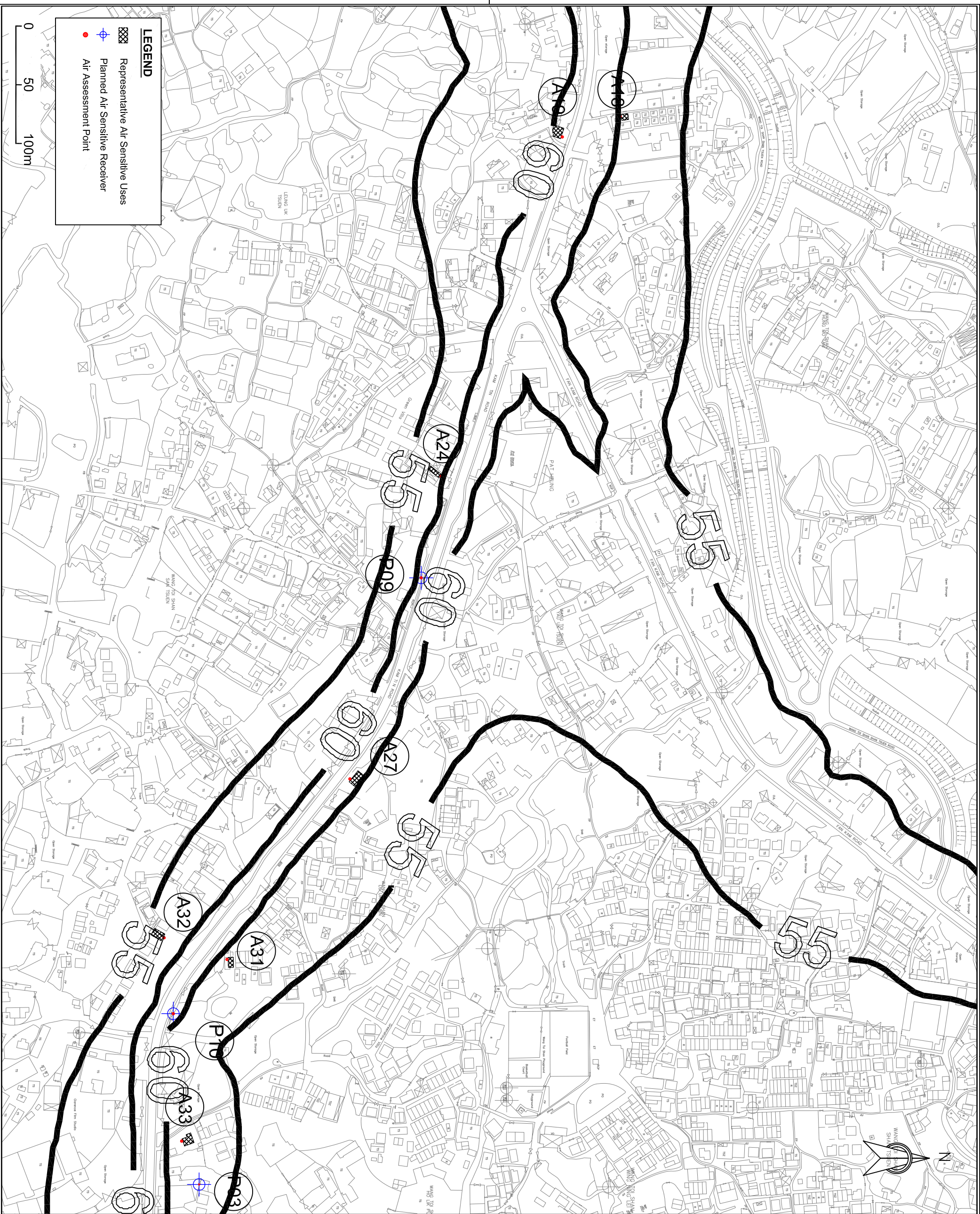
**Client**  
  
 HIGHWAYS  
 DEPARTMENT  
 WORKS DIVISION

**Consultants**  
  
**Mannings (Asia) Consultants Ltd**  
*In association with*  
**BMT Asia Pacific**

**Project**  
 Agreement No. WD 7/2007  
 Upgrading of Remaining Sections  
 of Kam Tin Road & Lam Kam Road  
 Environmental Impact Assessment

**Title**  
 Maximum Daily Average RSP Contours  
 at 1.5 m above ground (µg/m<sup>3</sup>)  
 (Sheet 2 of 6)

Drawing No. Figure 3.4b	Revision 0
----------------------------	---------------



Rev.	Description of Revision	Date	Chk.

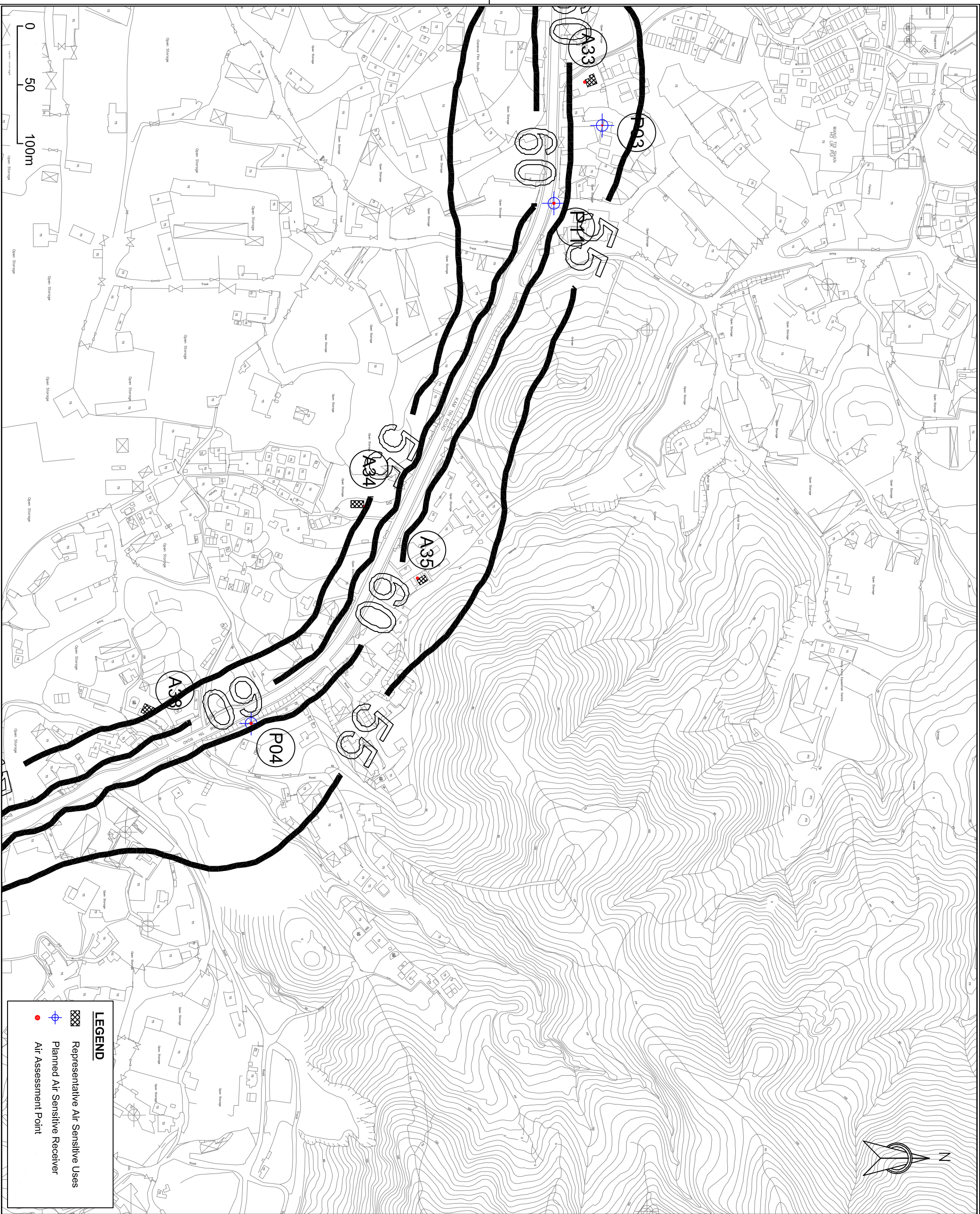
Client  
**HIGHWAYS DEPARTMENT WORKS DIVISION**

Consultants  
**Mannings (Asia) Consultants Ltd**  
*In association with*  
**BMT Asia Pacific**




Project  
 Agreement No. WD 7/2007  
 Upgrading of Remaining Sections of Kam Tin Road & Lam Kam Road Environmental Impact Assessment

Title  
 Maximum Daily Average RSP Contours at 1.5 m above ground ( $\mu\text{g}/\text{m}^3$ ) (Sheet 3 of 6)


Drawing No. Figure 3.4c	Revision 0
----------------------------	---------------



**LEGEND**

-  Representative Air Sensitive Uses
-  Planned Air Sensitive Receiver
-  Air Assessment Point

Rev.	Description of Revision	Date	Chk.

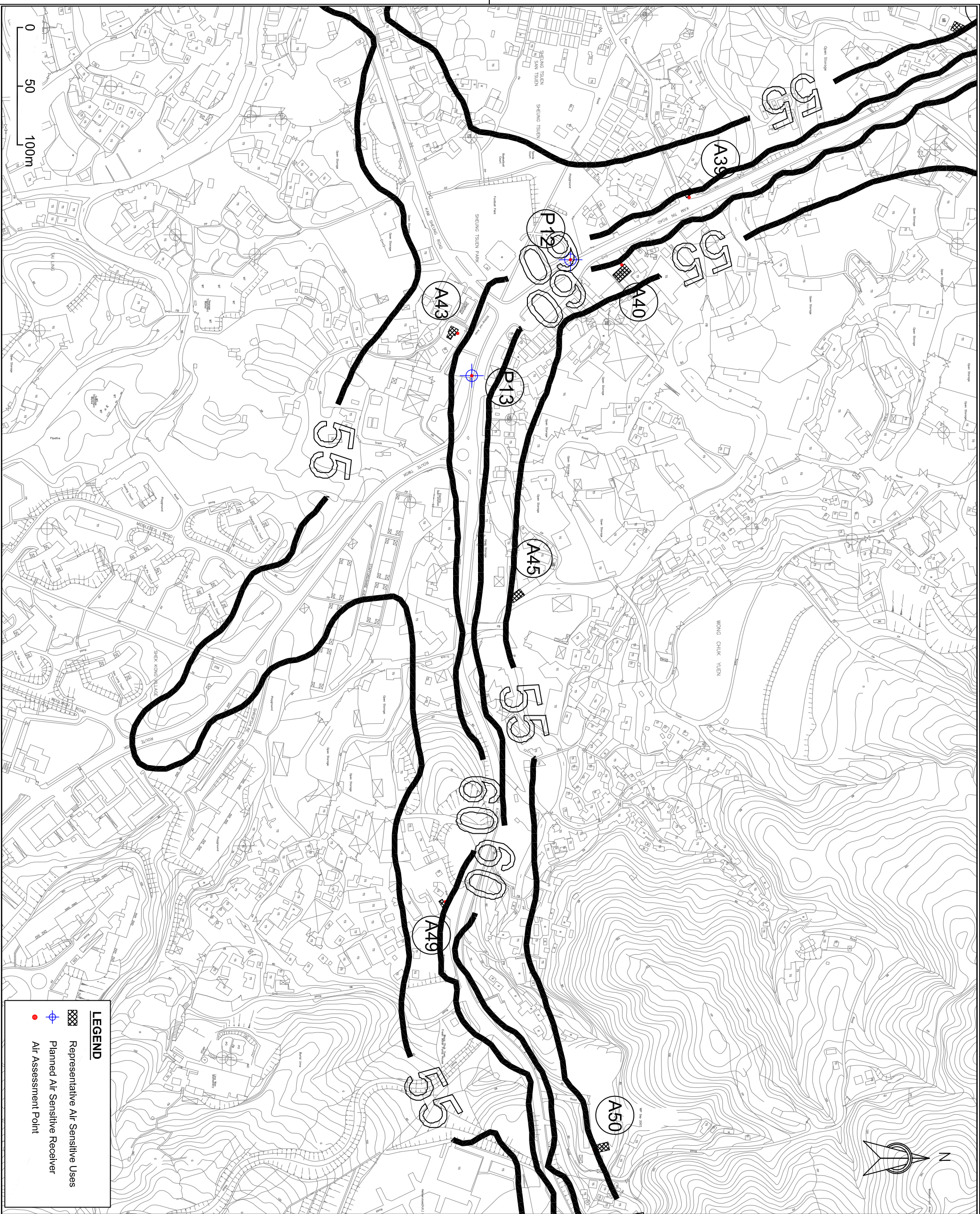
**Client**  
 **HIGHWAYS DEPARTMENT WORKS DIVISION**

**Consultants**  
**Mannings (Asia) Consultants Ltd**  
*In association with*  
**BMT Asia Pacific**

**Project**  
 Agreement No. WD 7/2007  
 Upgrading of Remaining Sections of Kam Tin Road & Lam Kam Road Environmental Impact Assessment

**Title**  
 Maximum Daily Average RSP Contours at 1.5 m above ground (µg/m<sup>3</sup>) (Sheet 4 of 6)

Drawing No. **Figure 3.4d**      Revision **0**



**LEGEND**

	Representative Air Sensitive Uses
	Planned Air Sensitive Receiver
	Air Assessment Point

Rev.	Description of Revision	Date	Chk.

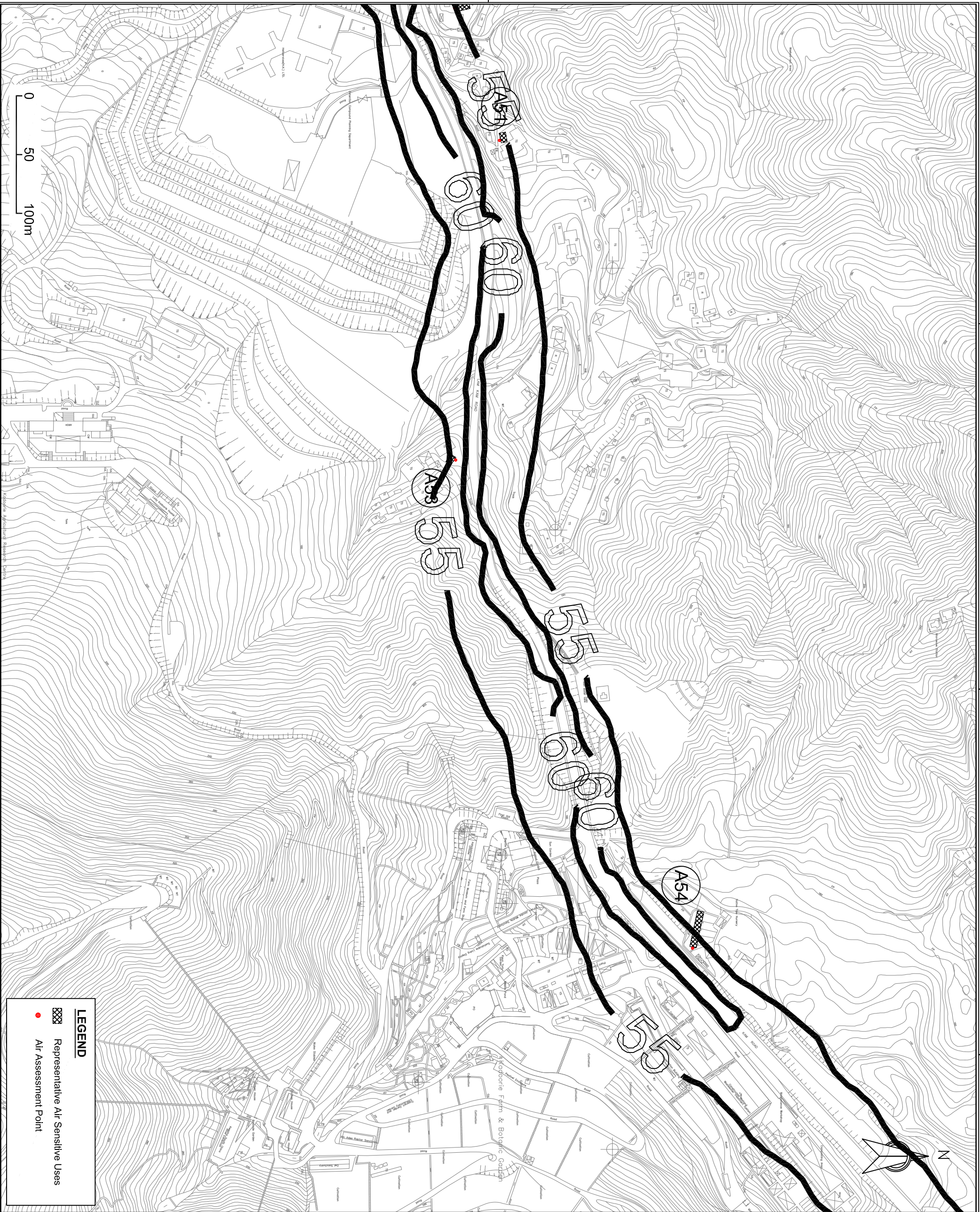
**Client**  
  
 HIGHWAYS DEPARTMENT WORKS DIVISION

**Consultants**  
  
**Mannings (Asia) Consultants Ltd**  
*In association with*  
**BMT Asia Pacific**

**Project**  
 Agreement No. WD 7/2007  
 Upgrading of Remaining Sections of Kam Tin Road & Lam Kam Road  
 Environmental Impact Assessment

**Title**  
 Maximum Daily Average RSP Contours at 1.5 m above ground ( $\mu\text{g}/\text{m}^3$ )  
 (Sheet 5 of 6)

Drawing No.	Revision
Figure 3.4e	0



Rev.	Description of Revision	Date	Chk.

Client  
**HIGHWAYS**  
 DEPARTMENT  
 WORKS DIVISION

Consultants  
**Mannings (Asia) Consultants Ltd**  
*In association with*  
**BMT Asia Pacific**

Project  
 Agreement No. WD 7/2007  
 Upgrading of Remaining Sections  
 of Kam Tin Road & Lam Kam Road  
 Environmental Impact Assessment

Title  
 Maximum Daily Average RSP Contours  
 at 1.5 m above ground ( $\mu\text{g}/\text{m}^3$ )  
 (Sheet 6 of 6)

Drawing No. Figure 3.4f	Revision 0
----------------------------	---------------