

Rev.	Description of Revision	Date	Chk.

Client	HIGHWAYS DEPARTMENT WORKS DIVISION
Consultants	Mannings (Asia) Consultants Ltd <i>In association with</i> BMT Asia Pacific
Project	Agreement No. WD 7/2007 Upgrading of Remaining Sections of Kam Tin Road & Lam Kam Road Environmental Impact Assessment
Title	Location of <i>Aquilaria sinensis</i>

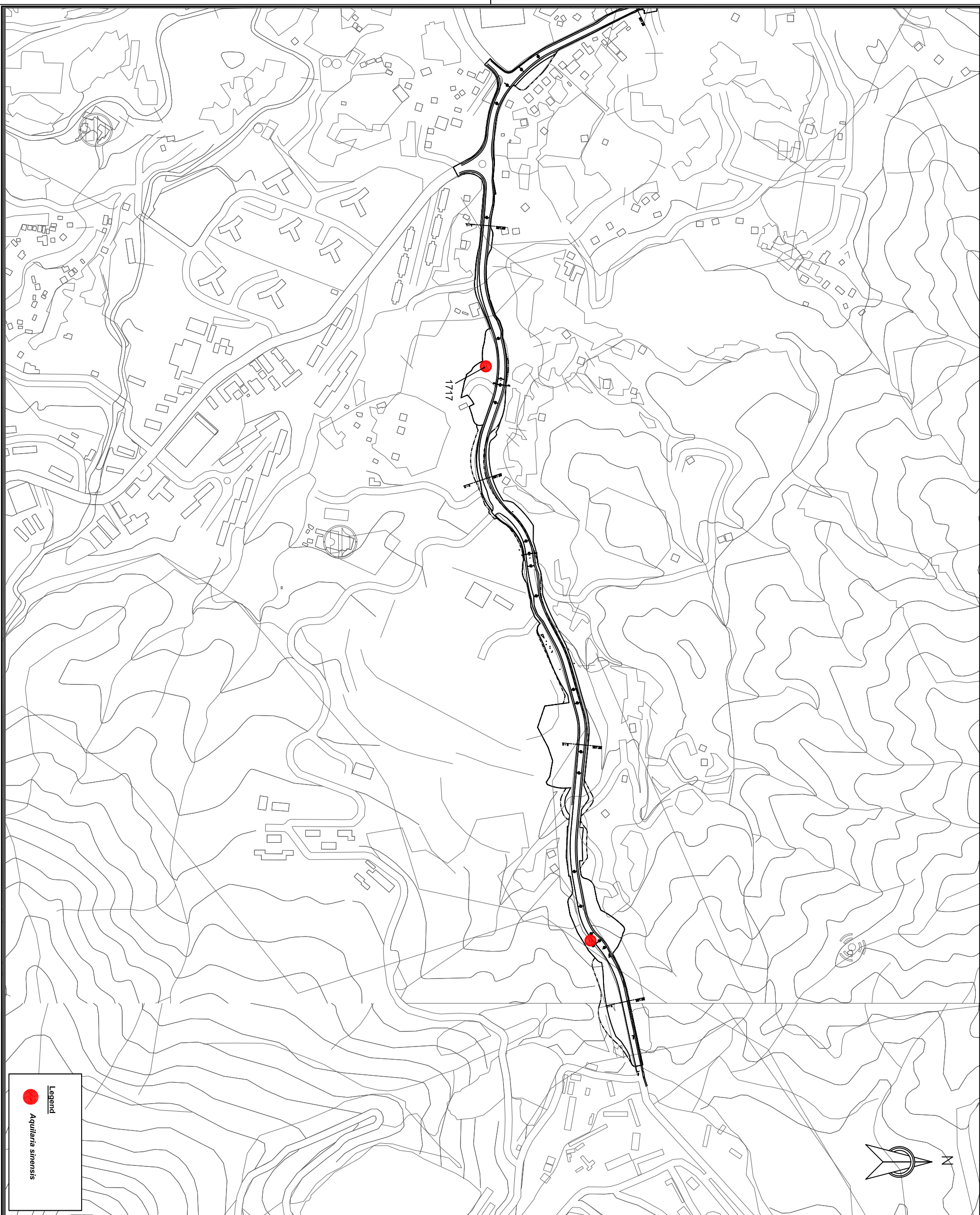
Client
HIGHWAYS DEPARTMENT WORKS DIVISION

Consultants
Mannings (Asia) Consultants Ltd
In association with
BMT Asia Pacific


Project
Agreement No. WD 7/2007
Upgrading of Remaining Sections of Kam Tin Road & Lam Kam Road Environmental Impact Assessment

Title
Location of *Aquilaria sinensis*

Drawing No.	Figure 7.3
Revision	0



Legend

 *Aquilaria sinensis*

Rev.	Description of Revision	Date	Chk.

Client

 HIGHWAYS
 DEPARTMENT
 WORKS DIVISION

Consultants

 Mannings (Asia) Consultants Ltd
In association with
 BMT Asia Pacific

Project
 Agreement No. WD 7/2007
 Upgrading of Remaining Sections
 of Kam Tin Road & Lam Kam Road
 Environmental Impact Assessment

Title
 Location of *Aquilaria sinensis*

Scale : 1:5000

Drawing No. Figure 7.3a	Revision 0
-----------------------------------	----------------------