

Figure 7.1a

Figure 7.1b

Figure 7.1c

0 200 400m

Rev.	Description of Revision	Date	Ord.

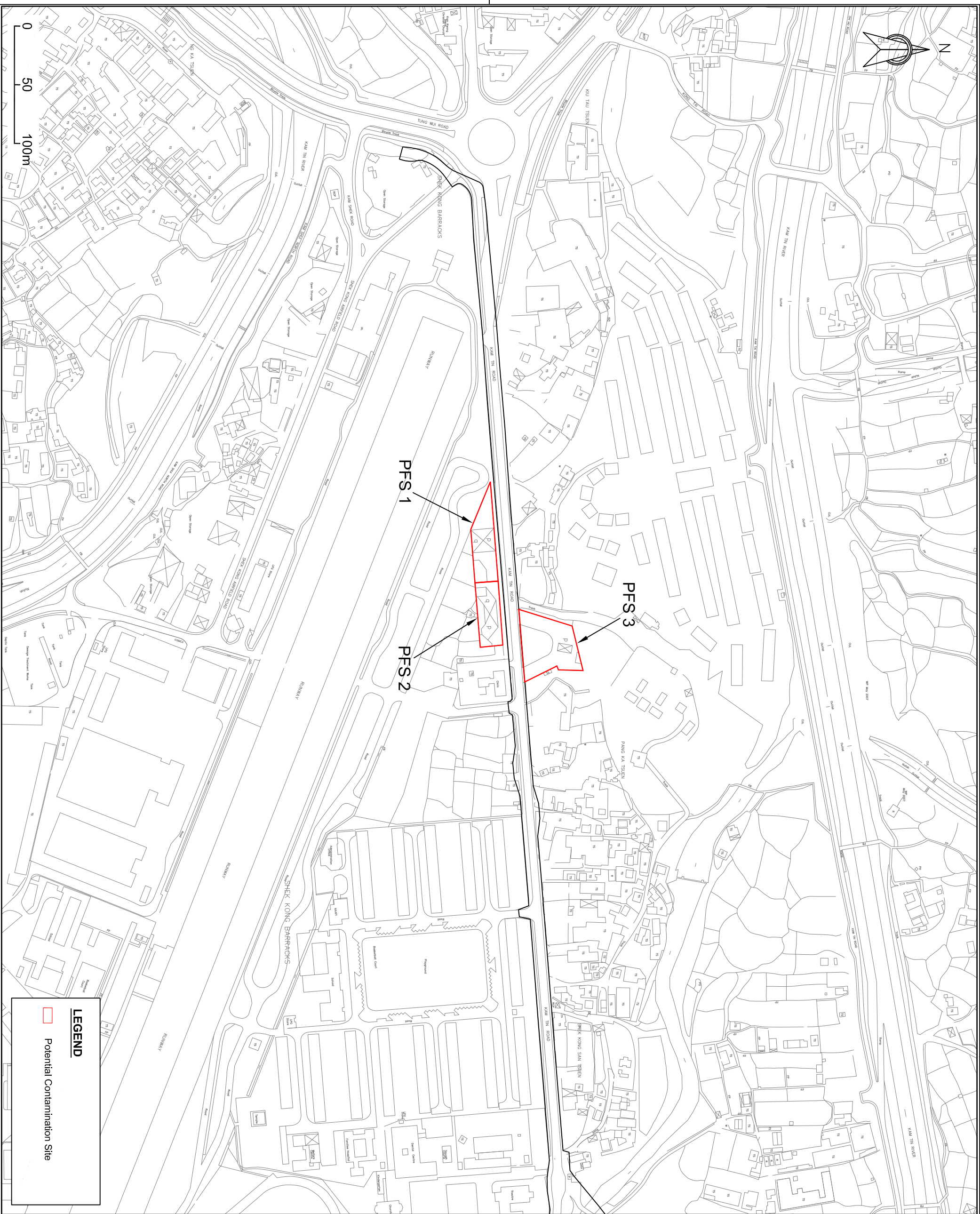
Client
 **HIGHWAYS DEPARTMENT WORKS DIVISION**

Consultants
Manning's (Asia) Consultants Ltd
In association with
BMT Asia Pacific

Project
 Agreement No. WD 7/2007
 Upgrading of Remaining Sections of Kam Tin Road & Lam Kam Road
 Environmental Impact Assessment

Title
 Locations of Potential Contamination Site Along Project Boundary (Index)

Drawing No.	Revision
Figure 7.1	1



LEGEND

Potential Contamination Site

Rev.	Description of Revision	Date	Chk.

Client
HIGHWAYS DEPARTMENT WORKS DIVISION

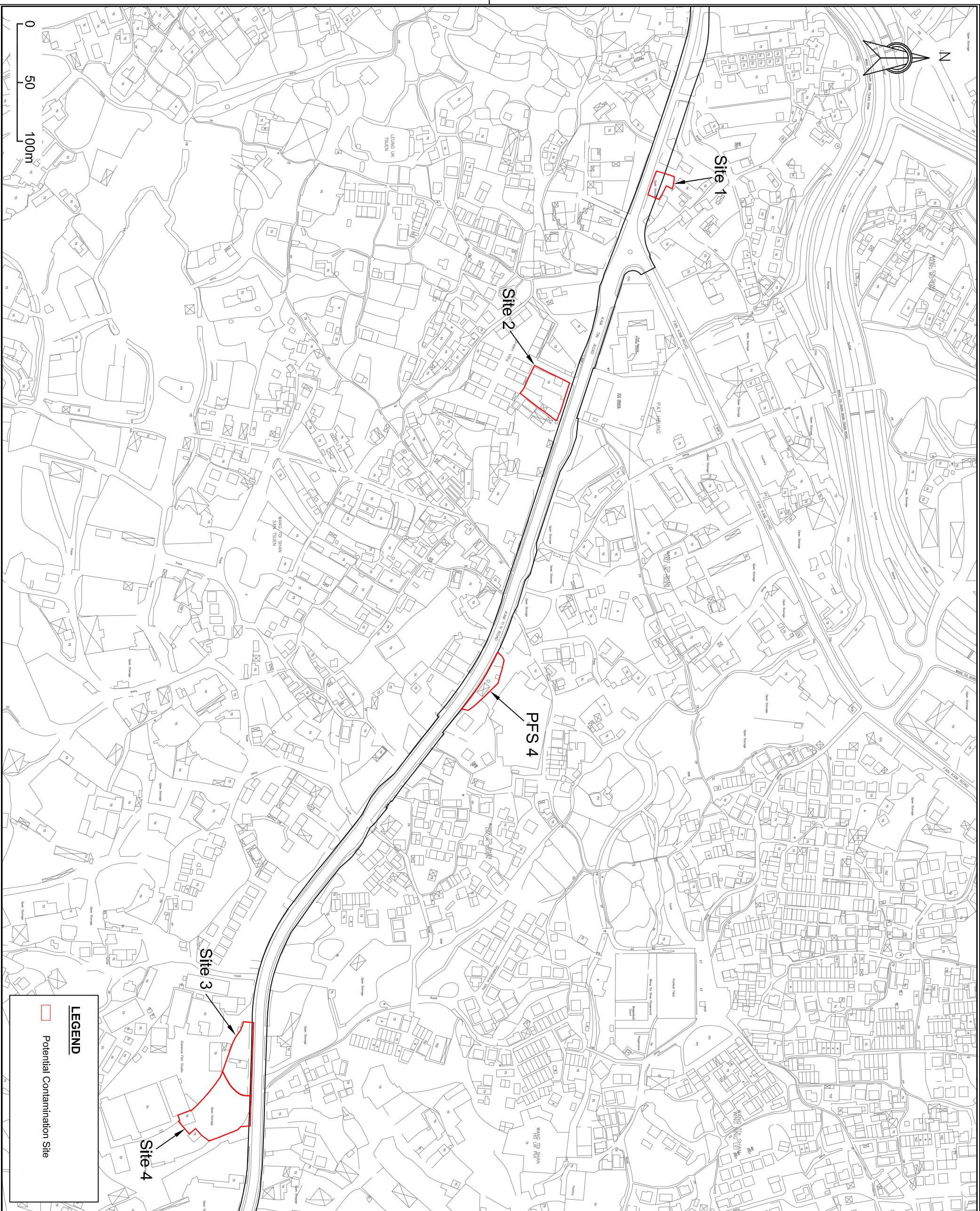
Consultants
Mannings (Asia) Consultants Ltd
in association with
BMT Asia Pacific

Project
 Agreement No. WD 7/2007
 Upgrading of Remaining Sections of Kam Tin Road & Lam Kam Road Environmental Impact Assessment

Title
 Locations of Potential Contamination Site Along Project Boundary (Sheet 1 of 3)

Drawing No.
 Figure 7.1a

Revision
 1



Rev.	Description of Revision	Date	Chk.

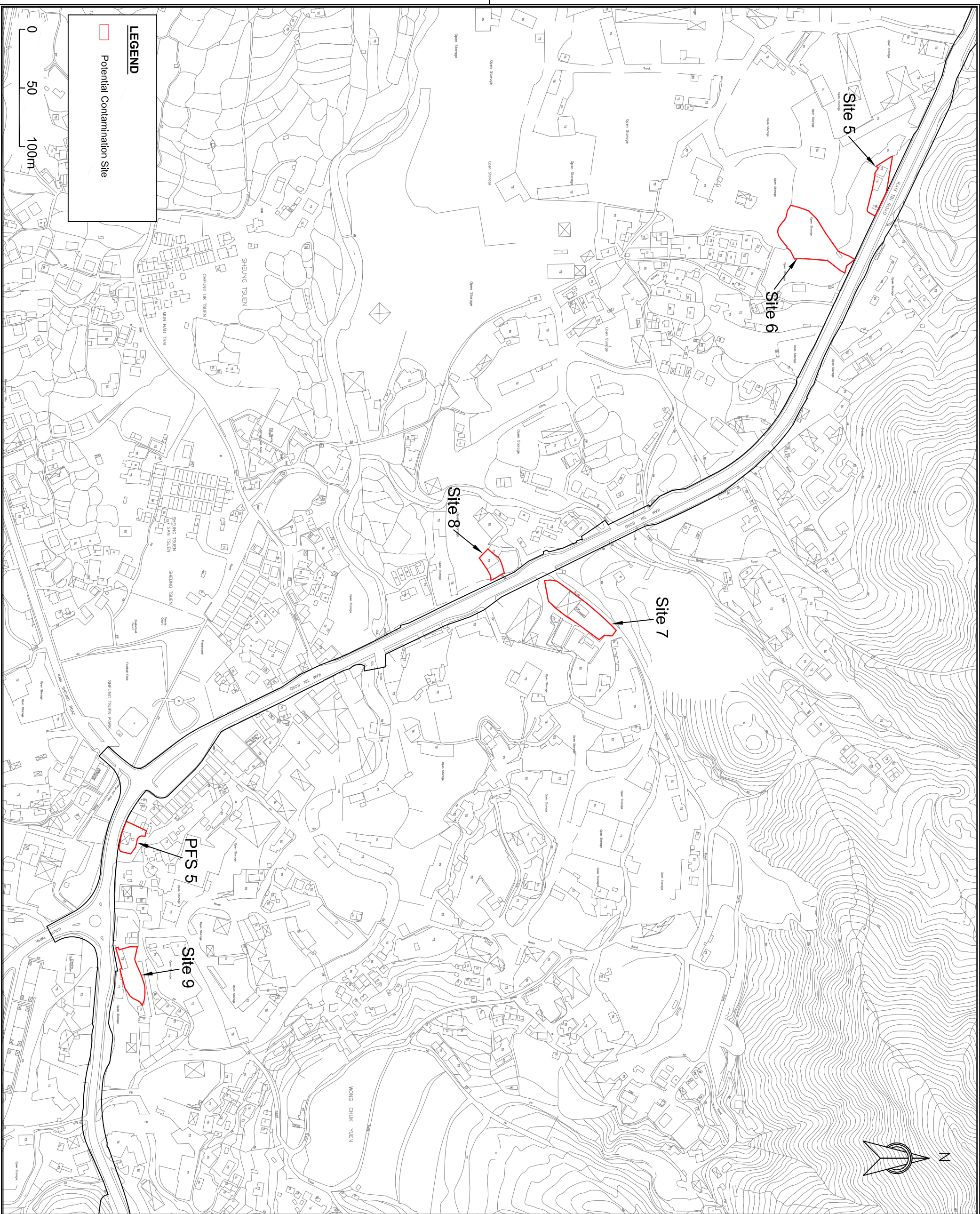
Client
HIGHWAYS DEPARTMENT WORKS DIVISION

Consultants
Mannings (Asia) Consultants Ltd
In association with
BMT Asia Pacific

Project
 Agreement No. WD 7/2007
 Upgrading of Remaining Sections of Kam Tin Road & Lam Kam Road Environmental Impact Assessment

Title
 Locations of Potential Contamination Site Along Project Boundary (Sheet 2 of 3)

Drawing No. Figure 7.1b	Revision 1
----------------------------	---------------



Rev.	Description of Revision	Date	Chk.

Client	HIGHWAYS DEPARTMENT WORKS DIVISION
Consultants	Mannings (Asia) Consultants Ltd <i>In association with</i> BMT Asia Pacific
Project	Agreement No. WD 7/2007 Upgrading of Remaining Sections of Kam Tin Road & Lam Kam Road Environmental Impact Assessment
Title	Locations of Potential Contamination Site Along Project Boundary (Sheet 3 of 3)
Drawing No.	Figure 7.1c
Revision	1

Client
HIGHWAYS DEPARTMENT WORKS DIVISION

Consultants
Mannings (Asia) Consultants Ltd
In association with
BMT Asia Pacific

Project
Agreement No. WD 7/2007
Upgrading of Remaining Sections of Kam Tin Road & Lam Kam Road
Environmental Impact Assessment

Title
Locations of Potential Contamination Site Along Project Boundary (Sheet 3 of 3)

Drawing No.
Figure 7.1c

Revision
1