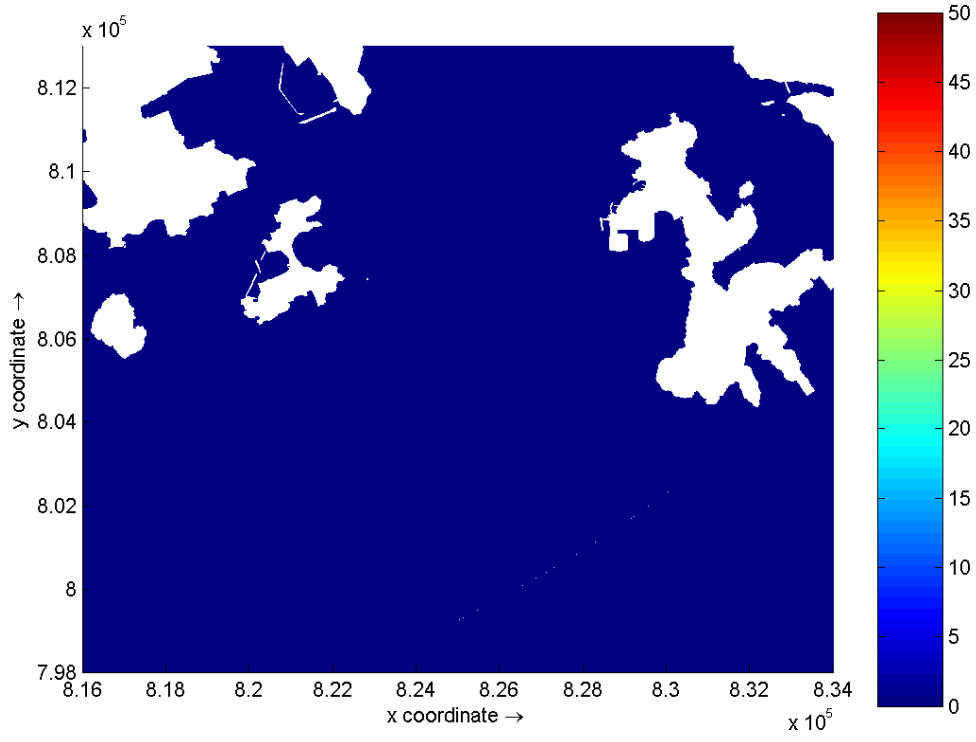
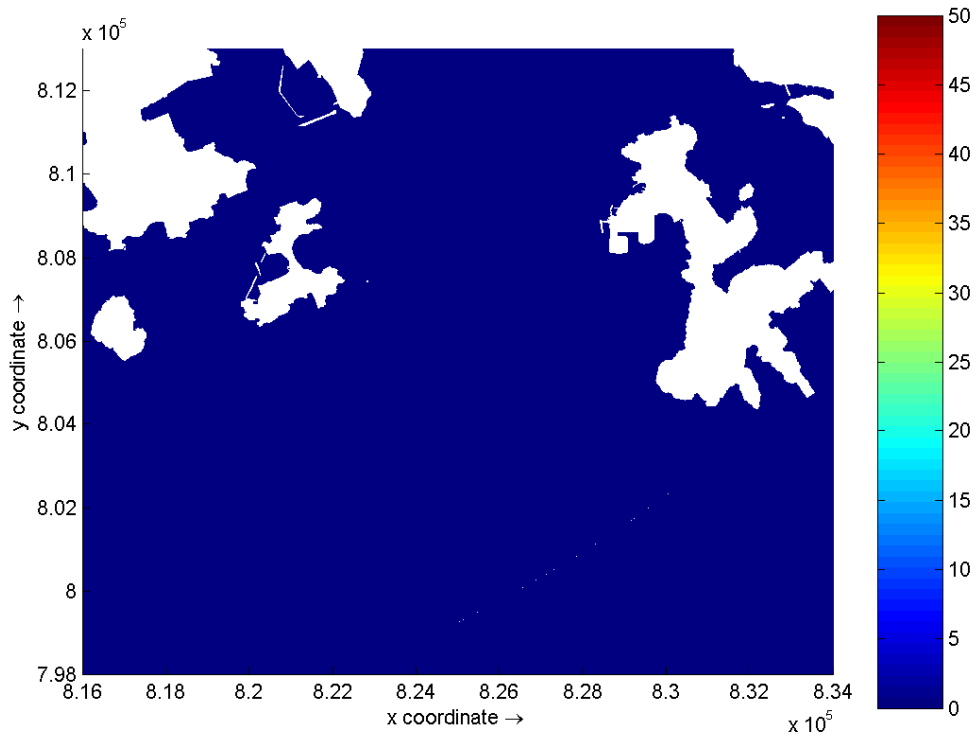


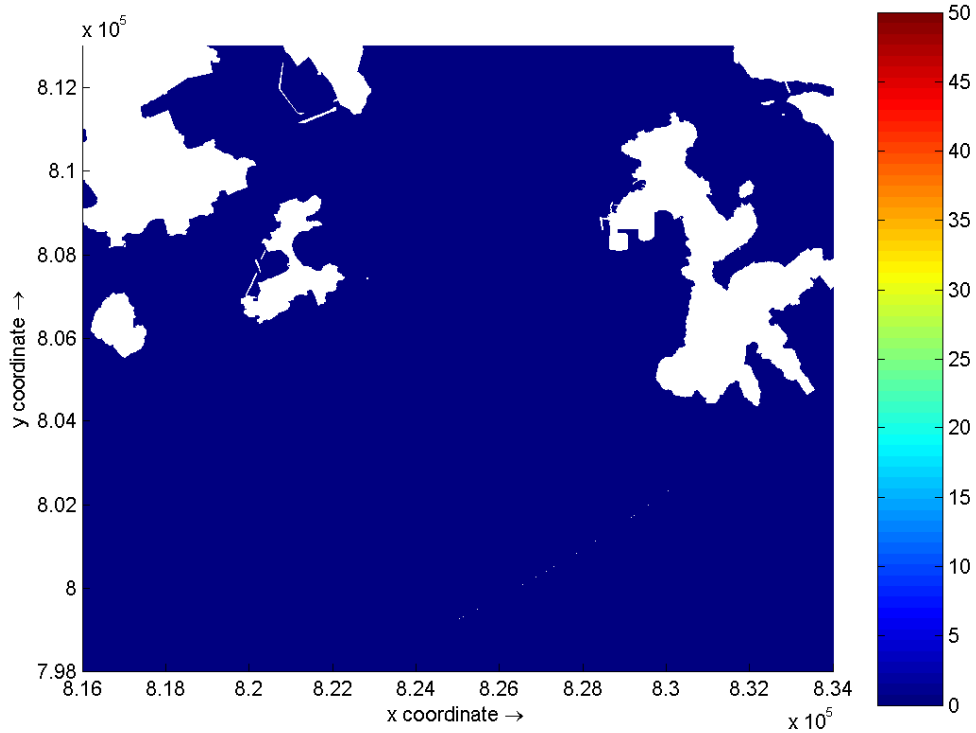
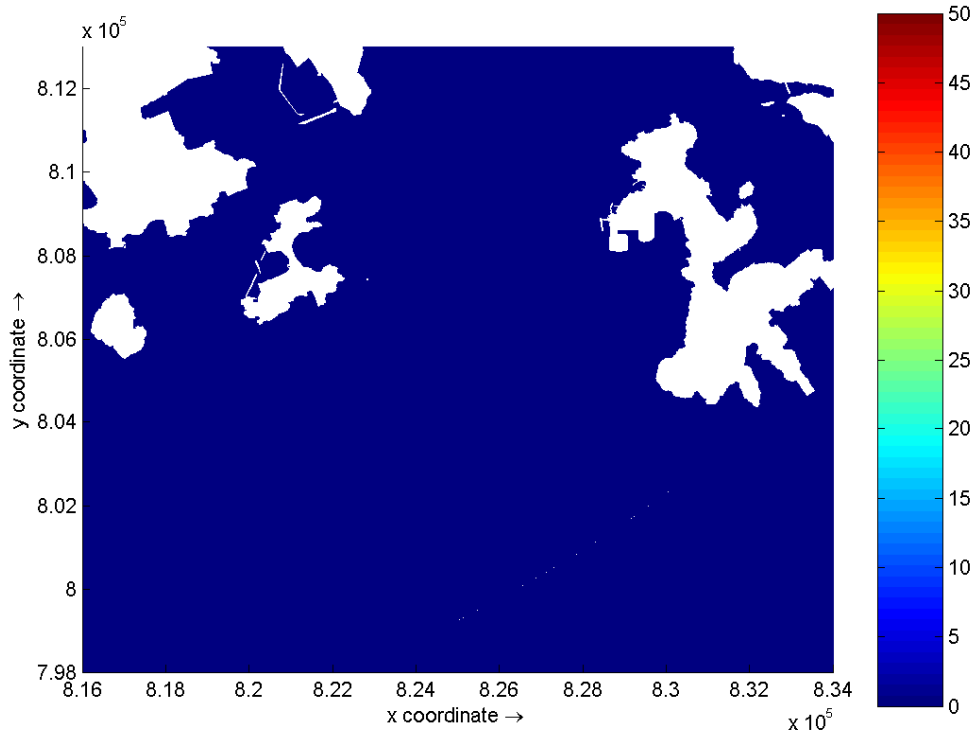
Suspended Solids (mg/L) – maximum depth average elevation on Days 1 (top) and 2 (bottom) of Grab Dredging at Lamma Island
Dry Season



Suspended Solids (mg/L) – maximum depth average elevation on Days 3 (top) and 4 (bottom) of Grab Dredging at Lamma Island Dry Season

Environmental
Resources
Management

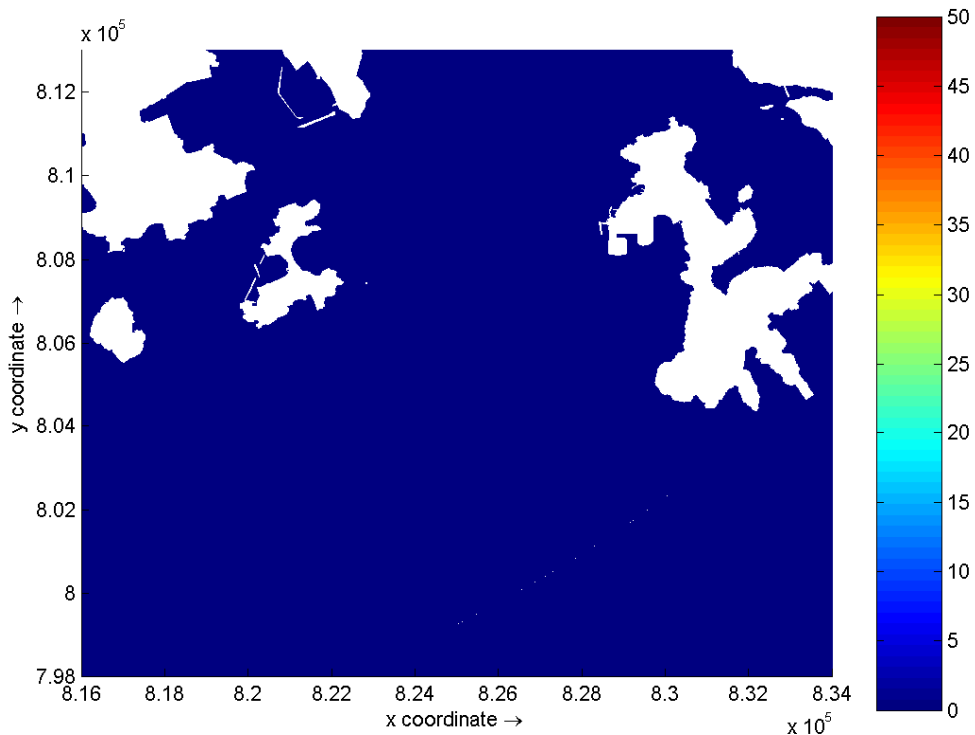
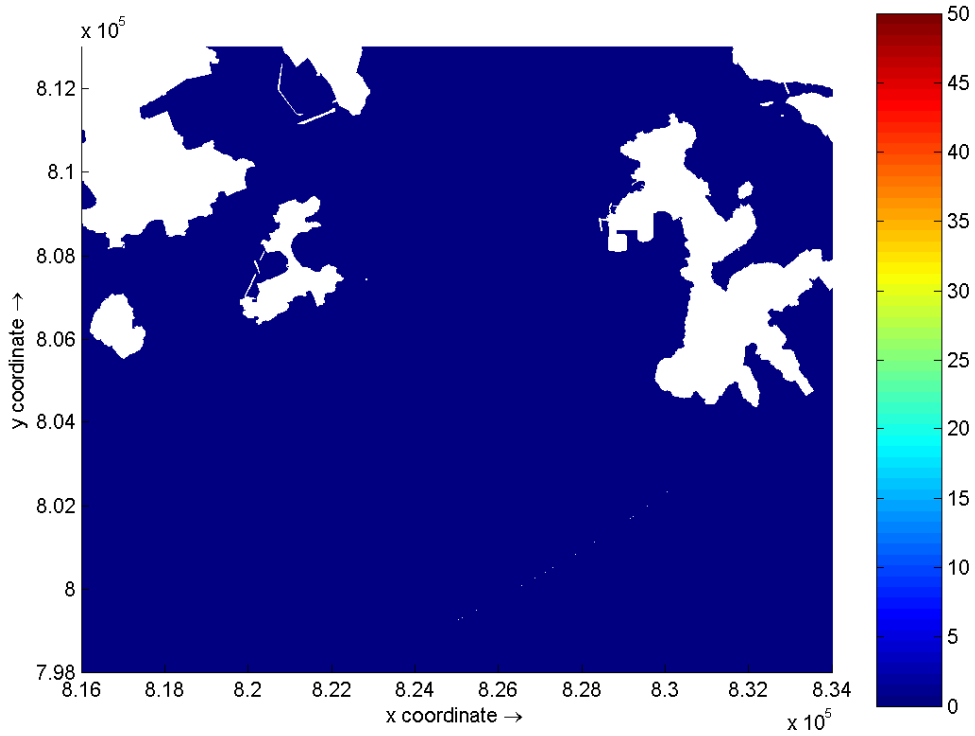




Suspended Solids (mg/L) – maximum depth average elevation on Days 5 (top) and 6 (bottom) of Grab Dredging at Lamna Island Dry Season

Environmental
Resources
Management

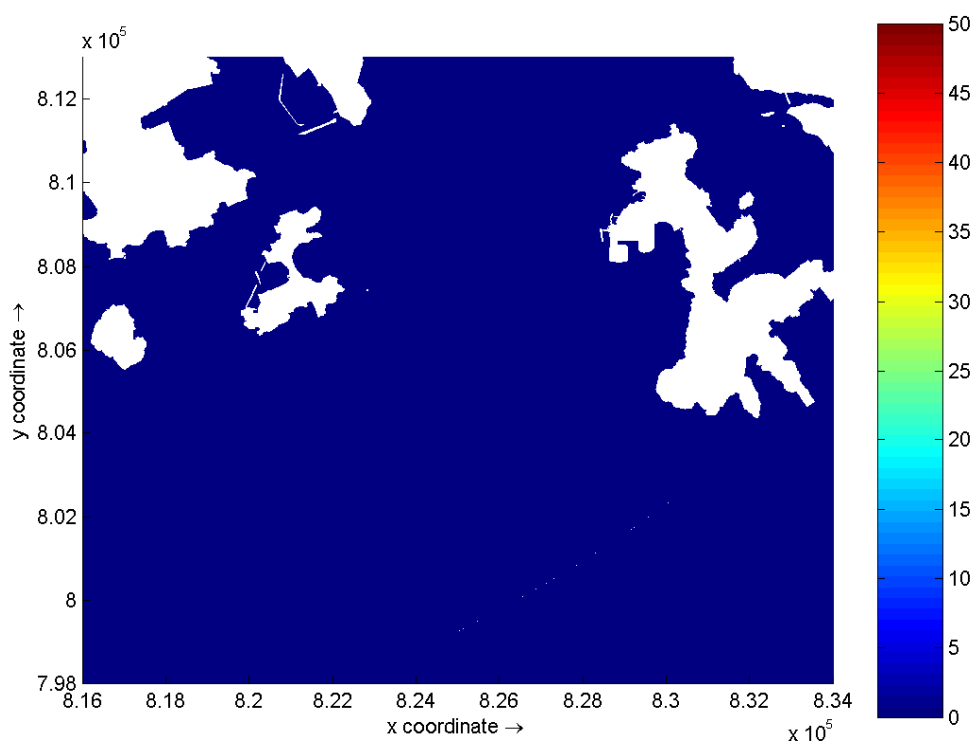
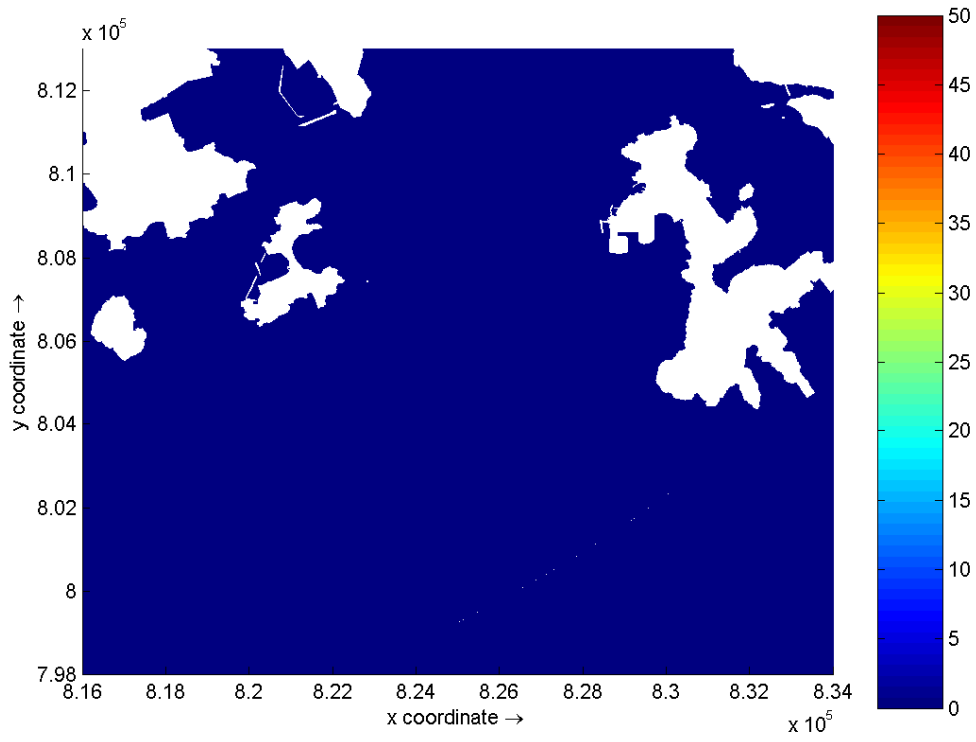




Suspended Solids (mg/L) – maximum depth average elevation on Days 7 (top) and 8 (bottom) of Grab Dredging at Lamma Island Dry Season

**Environmental
Resources
Management**

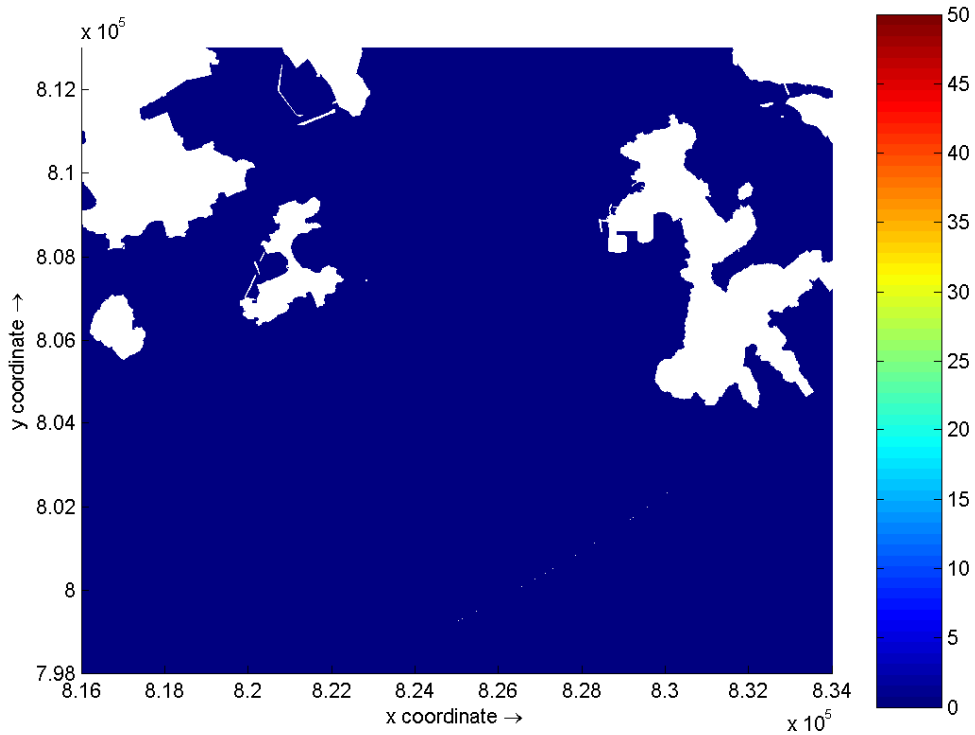
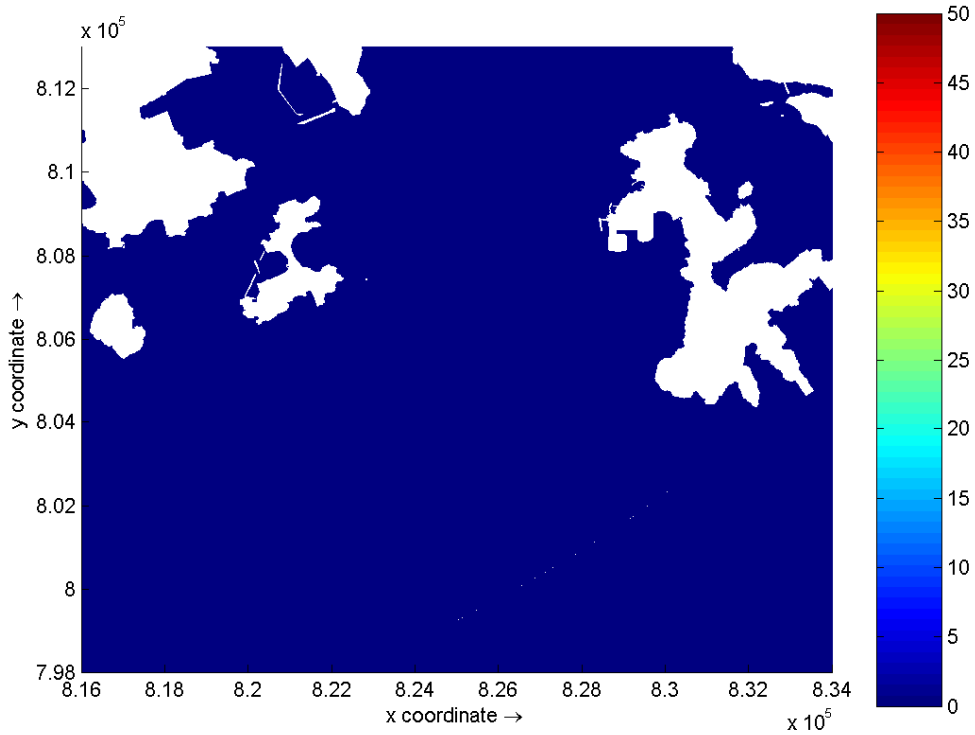




Suspended Solids (mg/L) – maximum depth average elevation on Days 9 (top) and 10 (bottom) of Grab Dredging at Lamma Island Dry Season

**Environmental
Resources
Management**

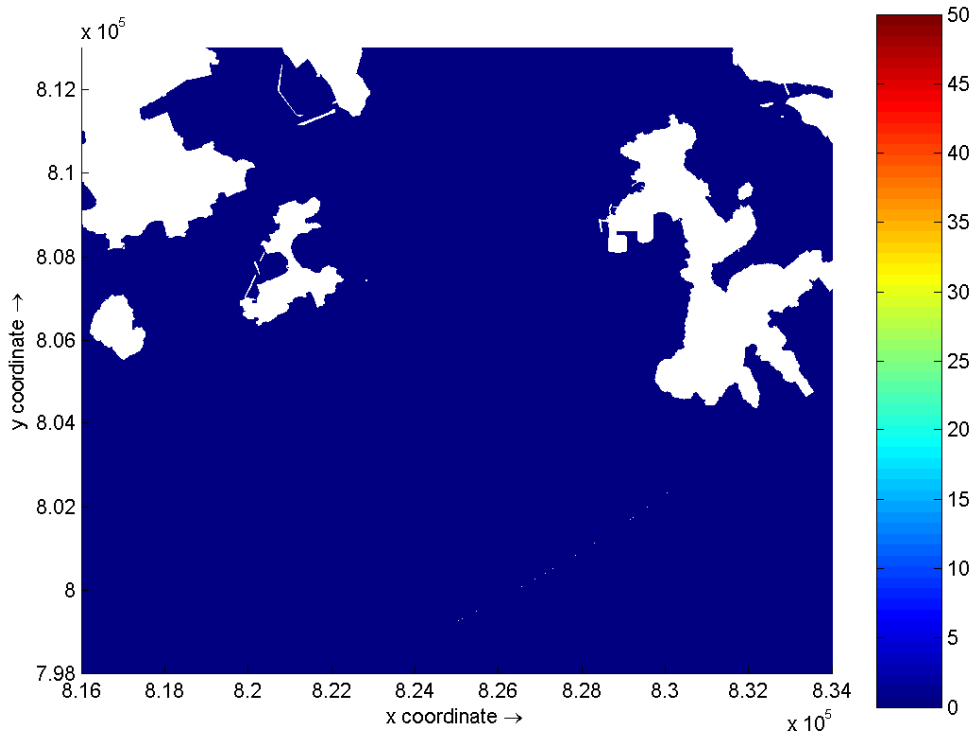
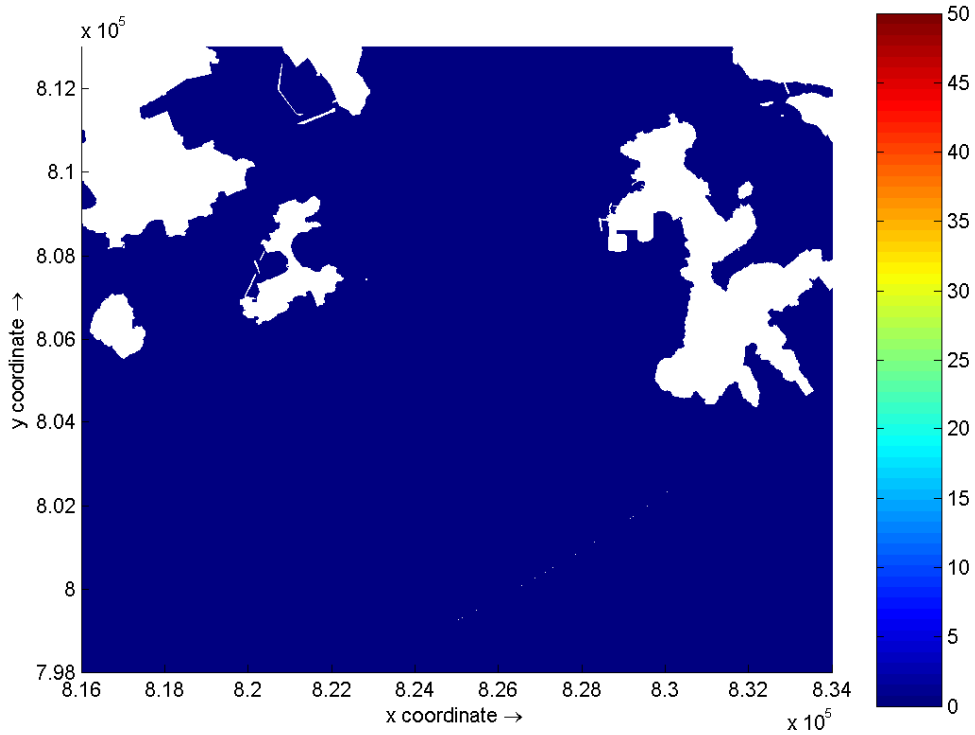




Suspended Solids (mg/L) – maximum depth average elevation on Days 11 (top) and 12 (bottom) of Grab Dredging at Lamma Island
Dry Season

**Environmental
Resources
Management**

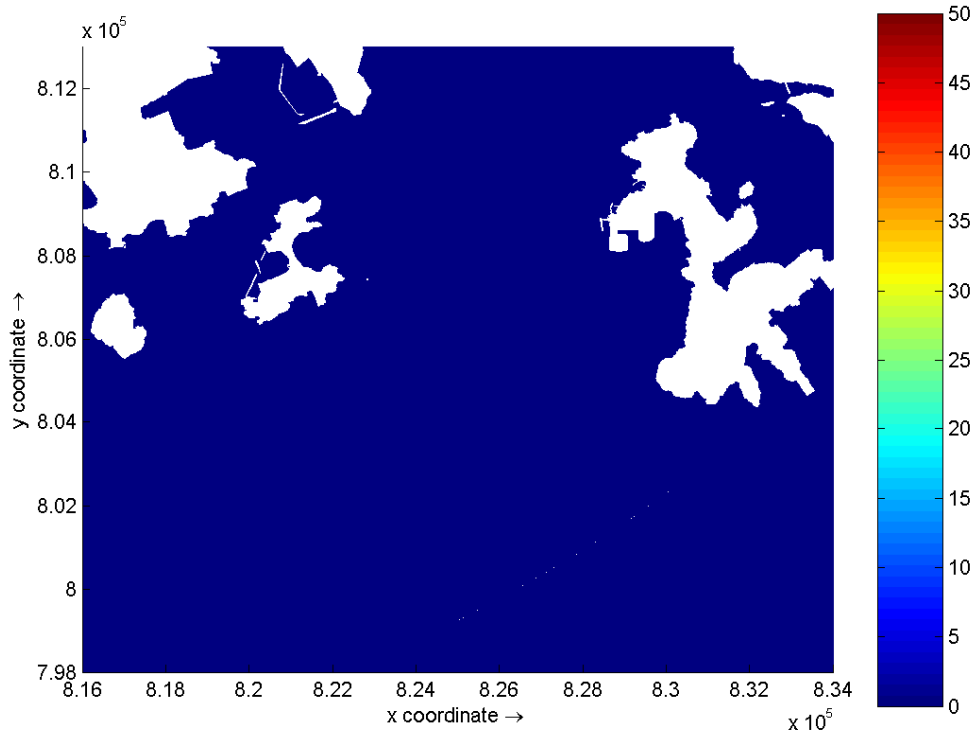




Suspended Solids (mg/L) – maximum depth average elevation on Days 13 (top) and 14 (bottom) of Grab Dredging at Lamma Island
Dry Season

Environmental
Resources
Management

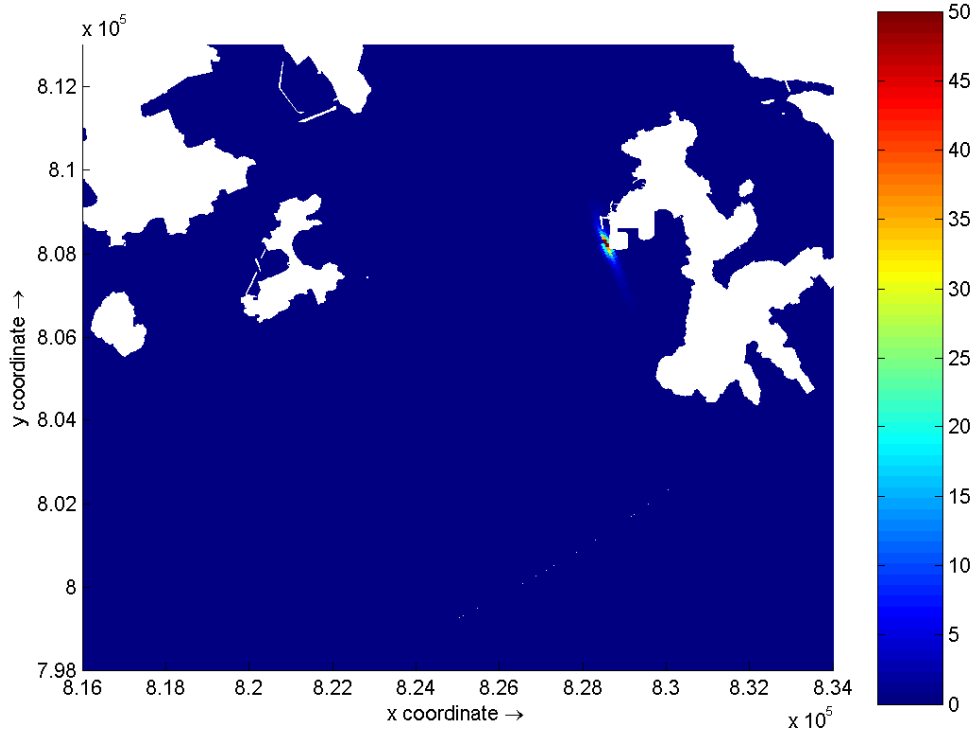
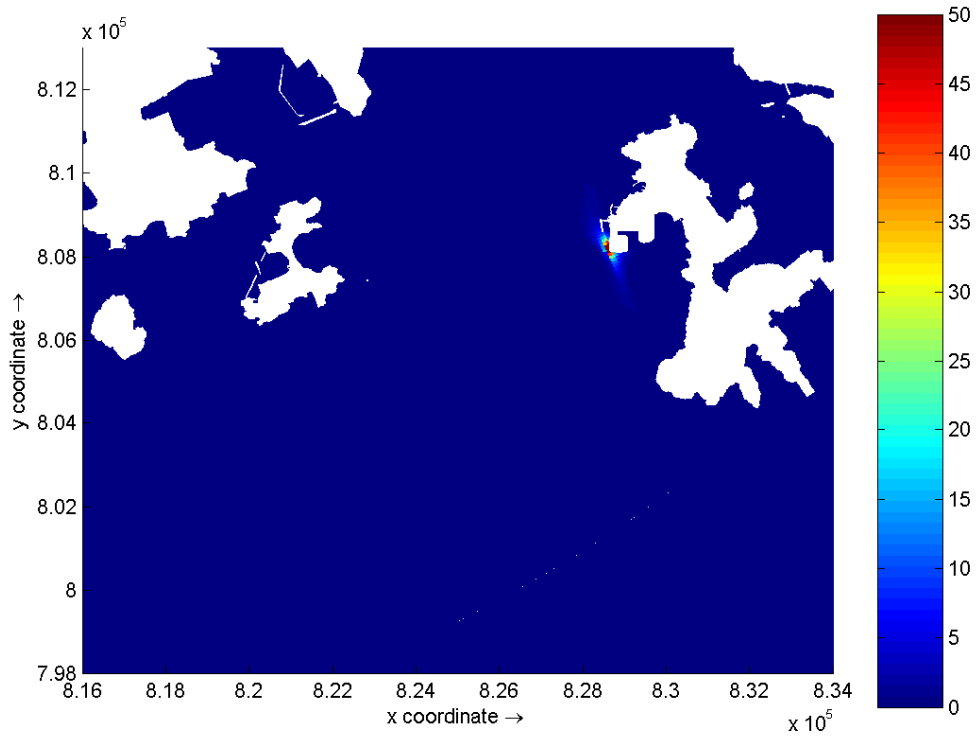




Suspended Solids (mg/L) – maximum depth average elevation on Day 15 of Grab
Dredging at Lamma Island
Dry Season

Environmental
Resources
Management

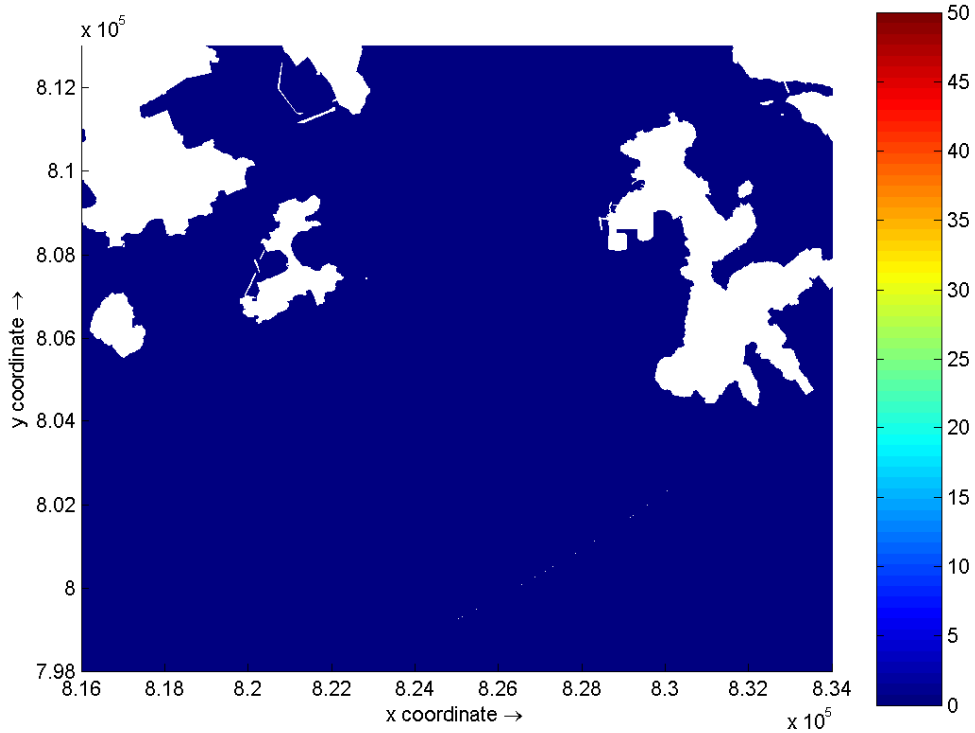
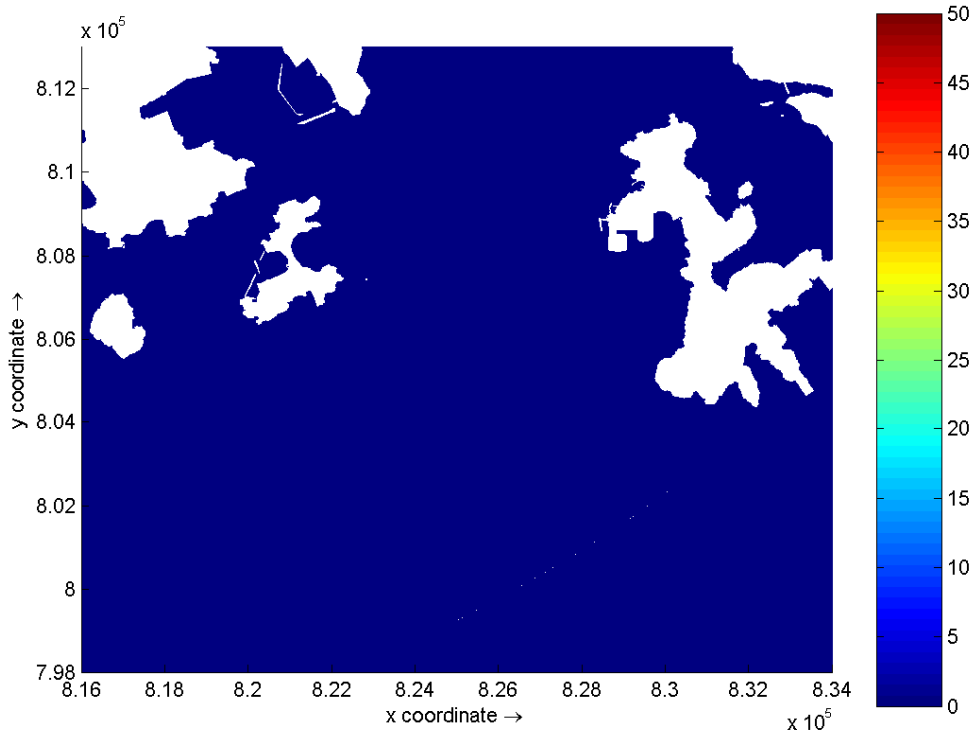




Suspended Solids (mg/L) – maximum depth average elevation on Days 1 (top) and 2 (bottom) of Grab Dredging at Lamma Island
Wet Season

**Environmental
Resources
Management**

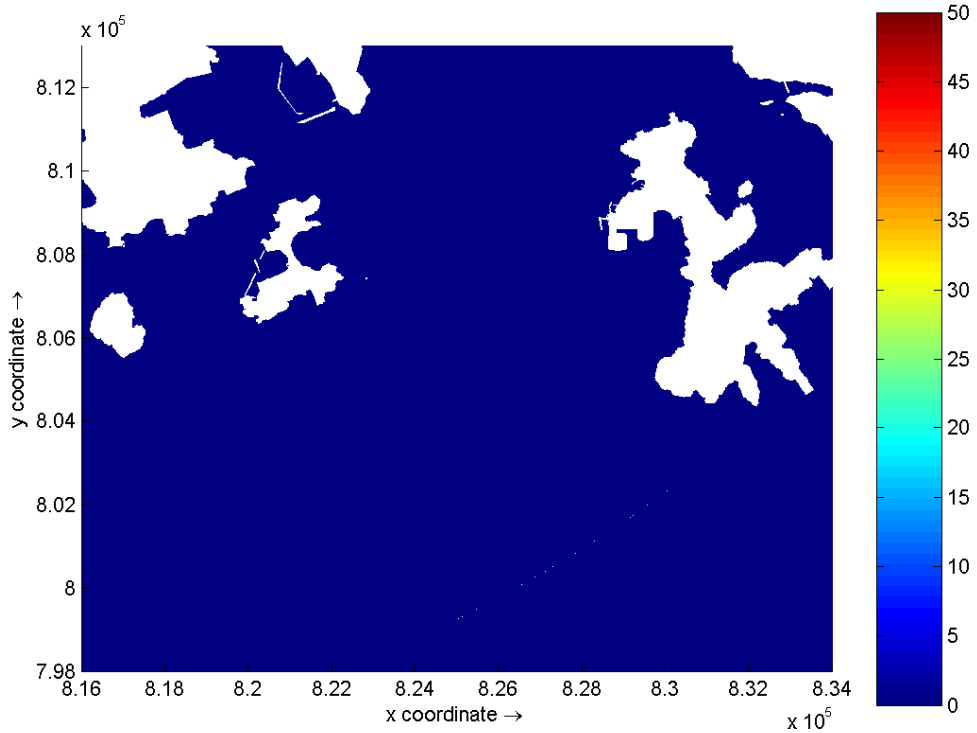
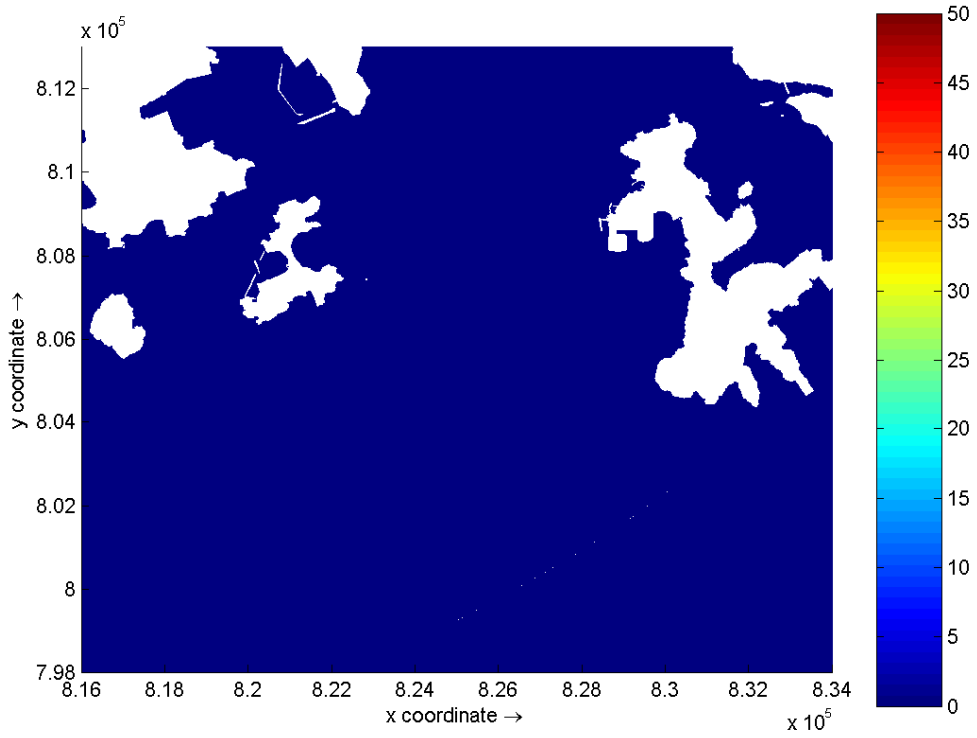




Suspended Solids (mg/L) – maximum depth average elevation on Days 3 (top) and 4 (bottom) of Grab Dredging at Lamna Island
Wet Season

**Environmental
Resources
Management**

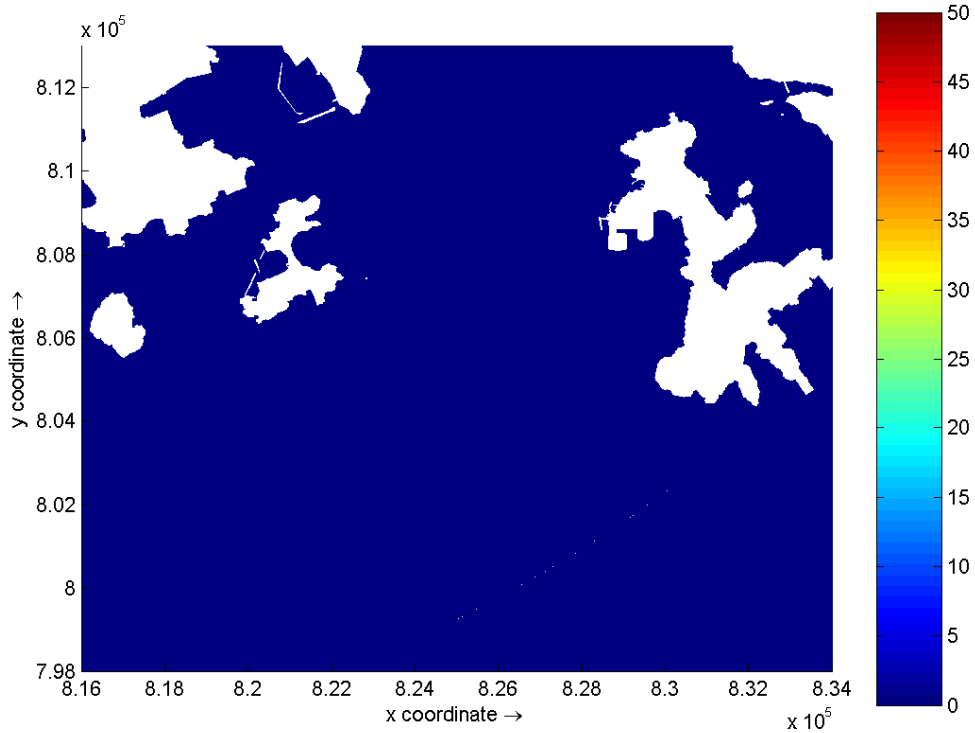
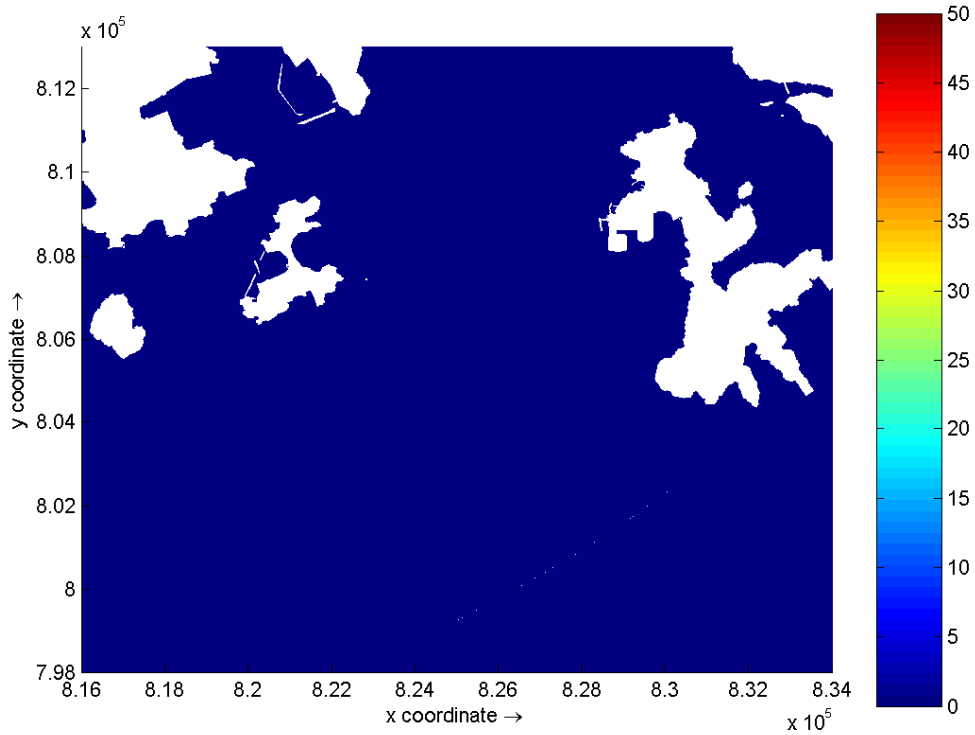




Suspended Solids (mg/L) – maximum depth average elevation on Days 5 (top) and 6 (bottom) of Grab Dredging at Lamna Island
Wet Season

**Environmental
Resources
Management**

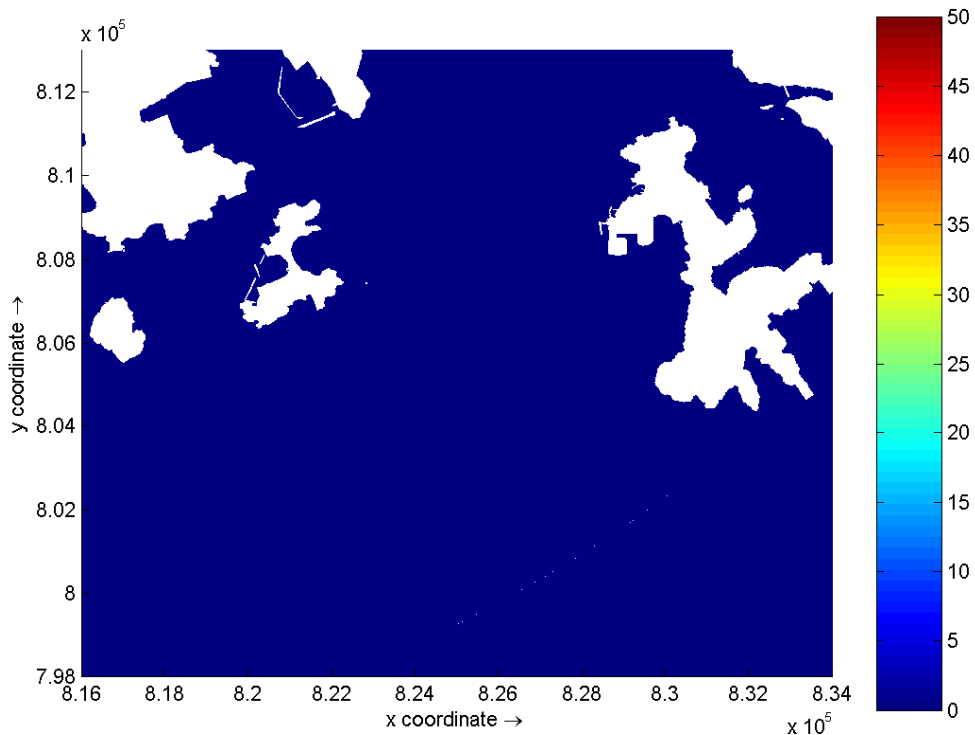
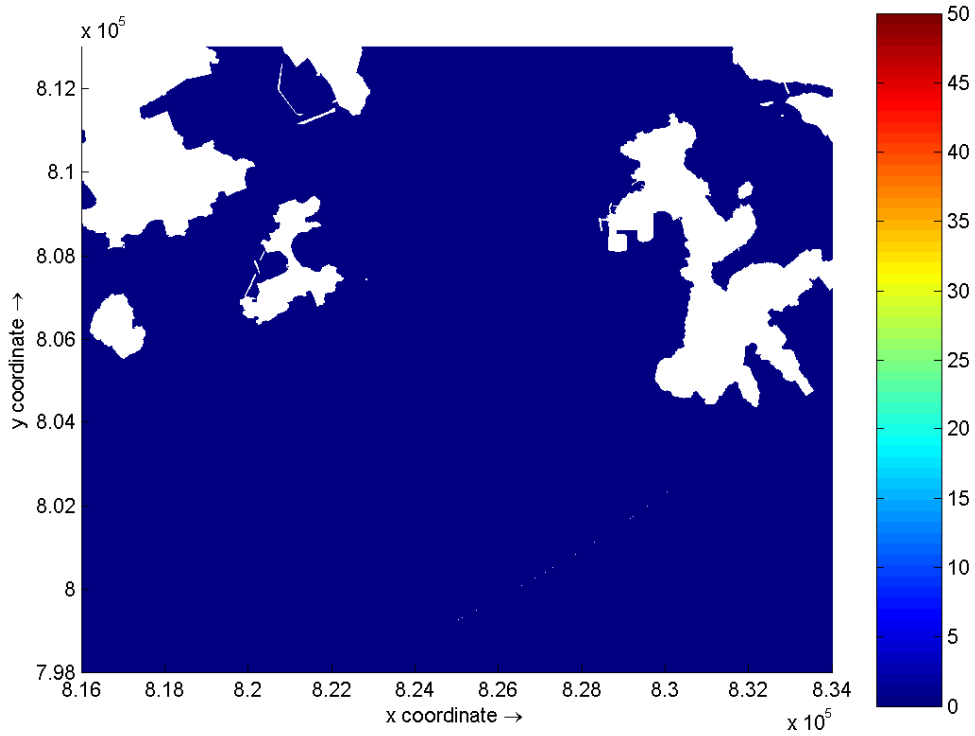




Suspended Solids (mg/L) – maximum depth average elevation on Days 7 (top) and 8 (bottom) of Grab Dredging at Lamna Island
Wet Season

**Environmental
Resources
Management**

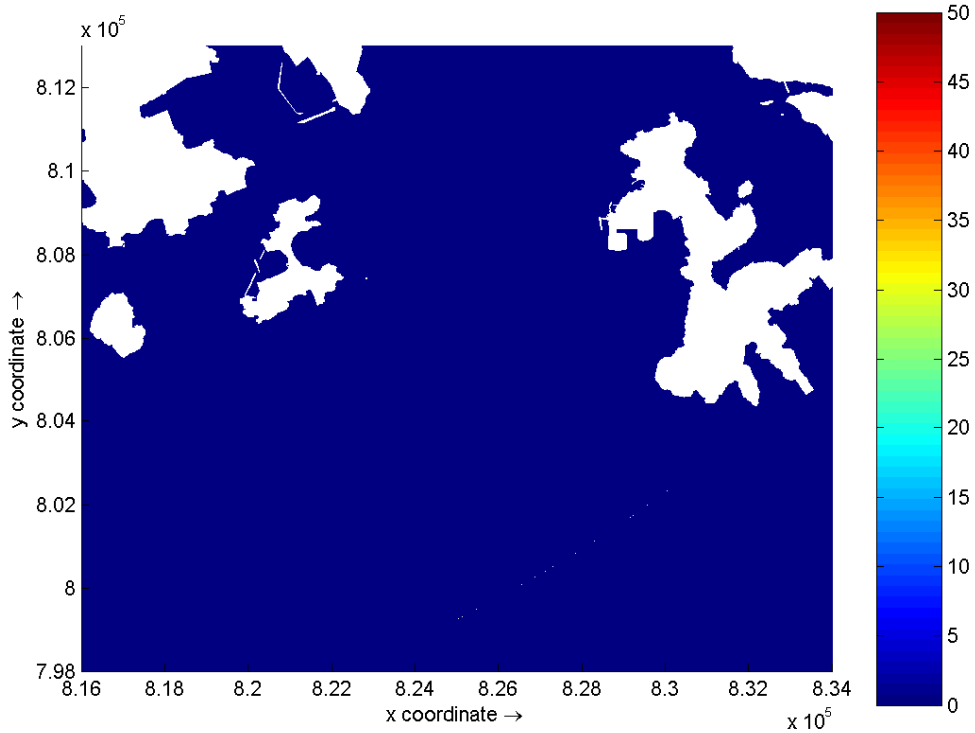
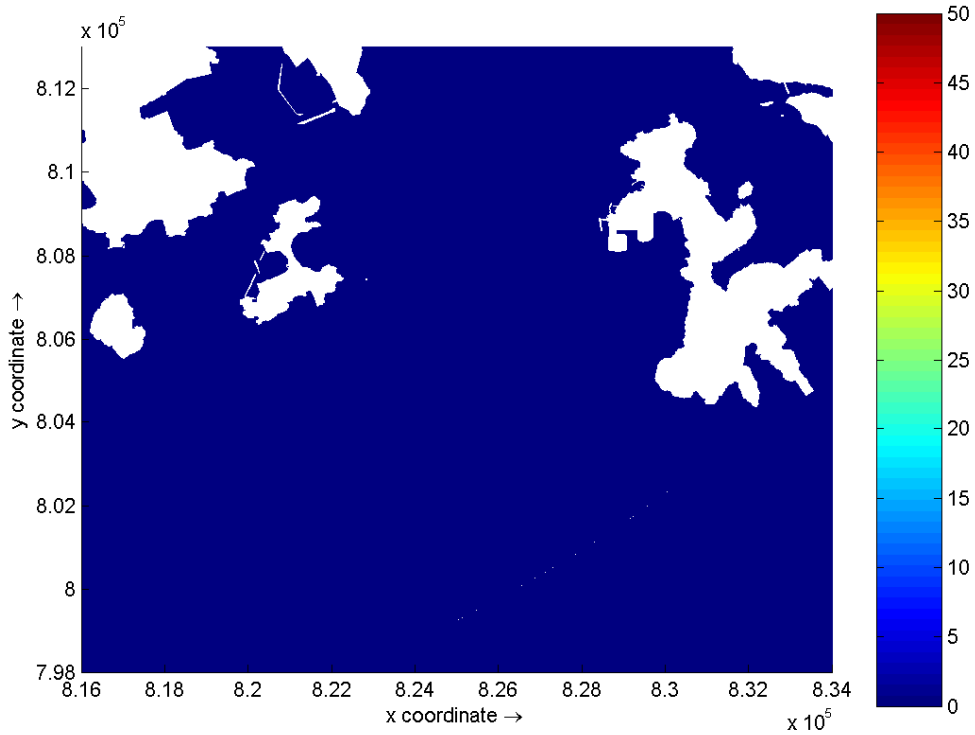




Suspended Solids (mg/L) – maximum depth average elevation on Days 9 (top) and 10 (bottom) of Grab Dredging at Lamma Island
Wet Season

**Environmental
Resources
Management**

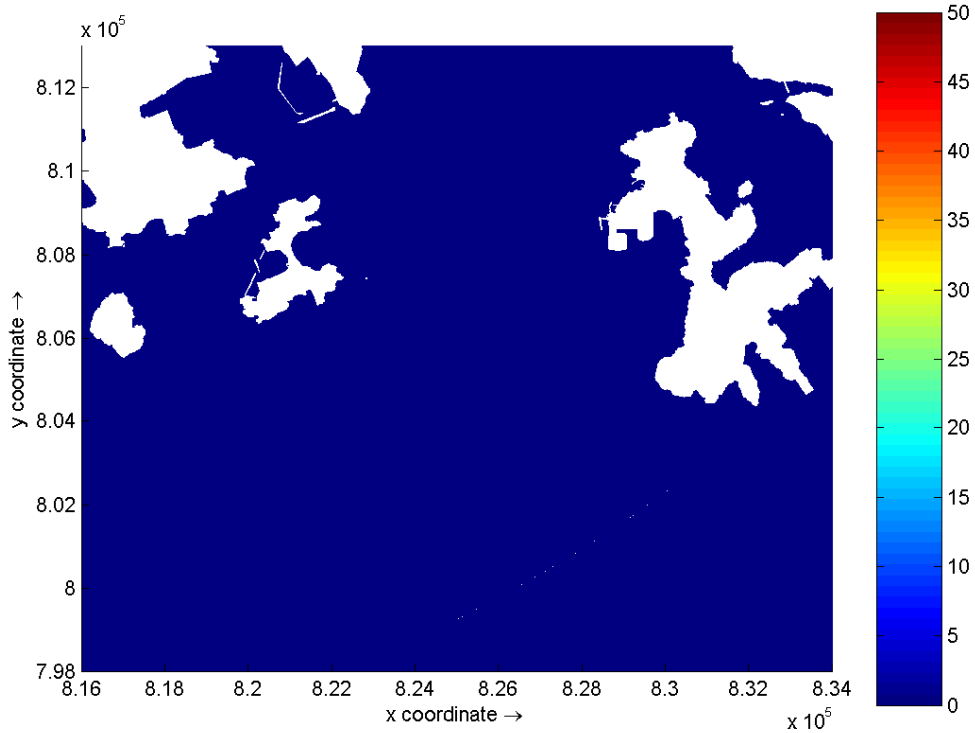
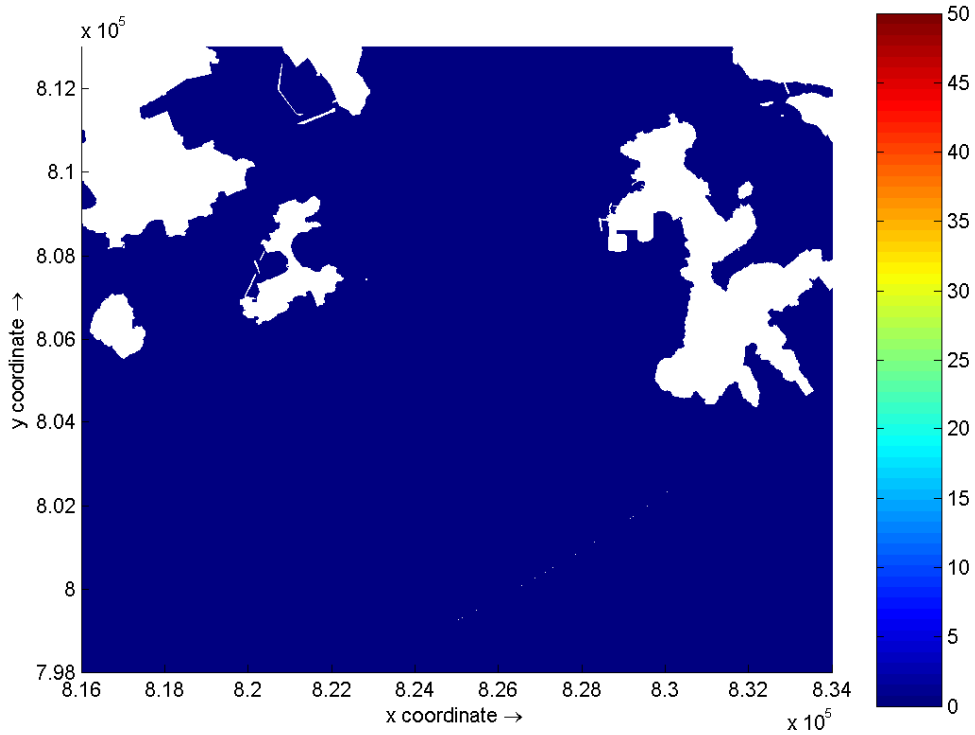




Suspended Solids (mg/L) – maximum depth average elevation on Days 11 (top) and 12 (bottom) of Grab Dredging at Lamma Island
Wet Season

**Environmental
Resources
Management**

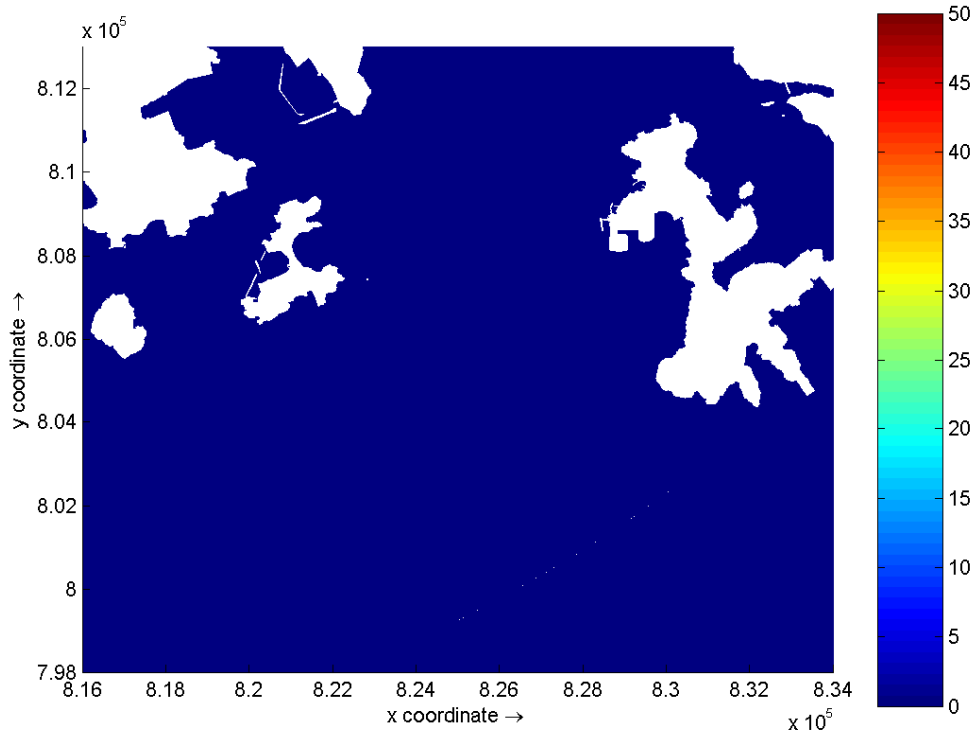




Suspended Solids (mg/L) – maximum depth average elevation on Days 13 (top) and 14 (bottom) of Grab Dredging at Lamma Island
Wet Season

**Environmental
Resources
Management**

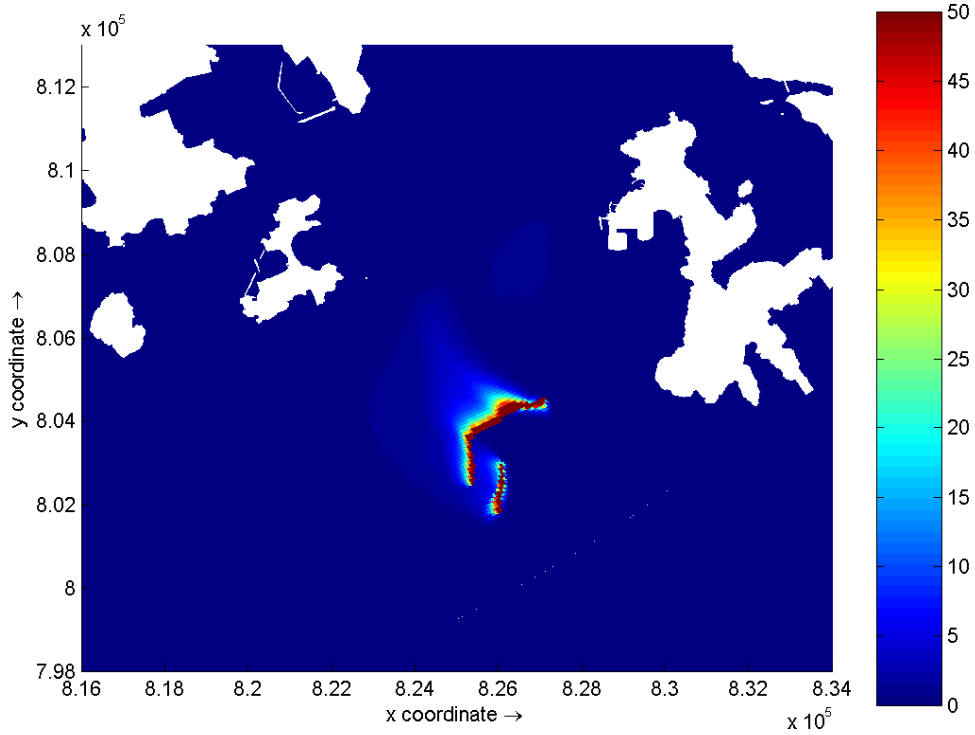
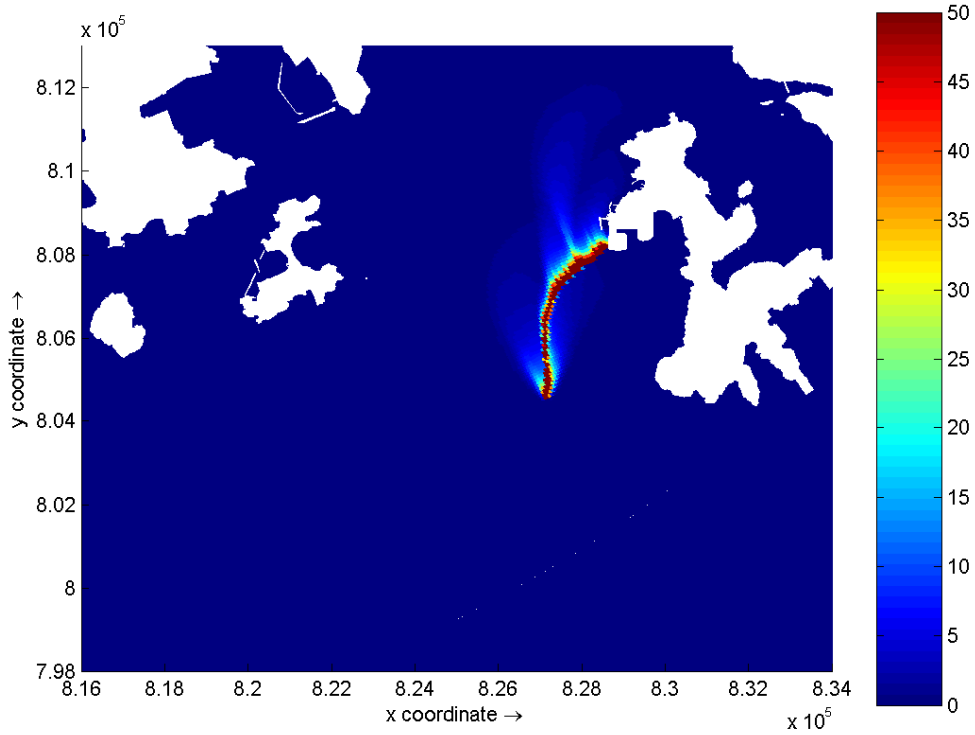




Suspended Solids (mg/L) – maximum depth average elevation on Day 15 of
 Grab Dredging at Lamma Island
 Wet Season

**Environmental
 Resources
 Management**

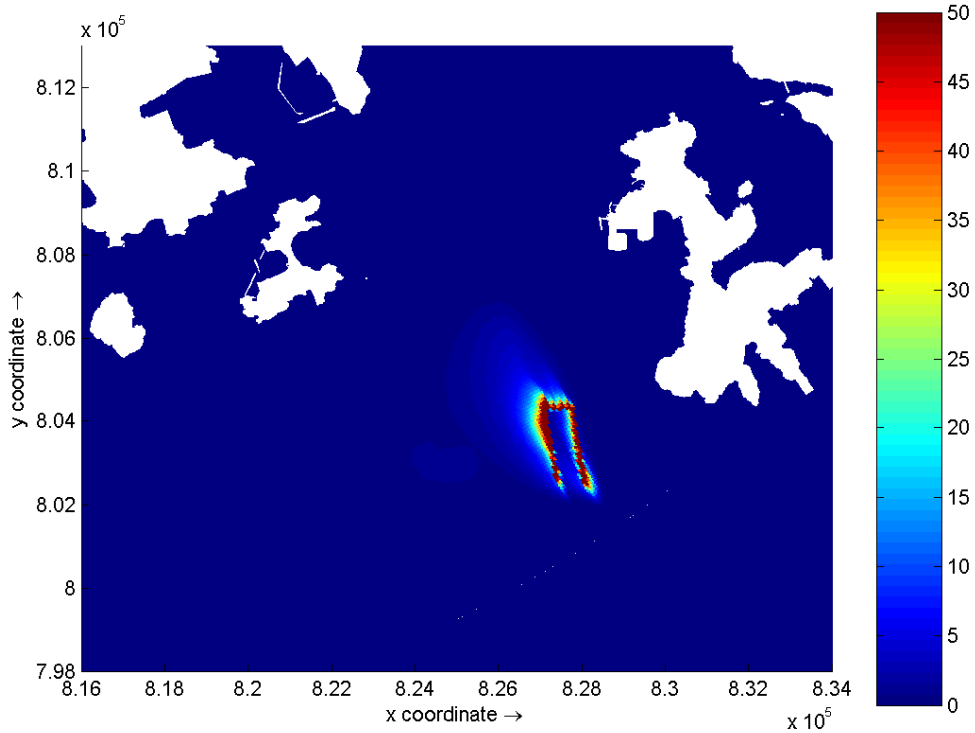
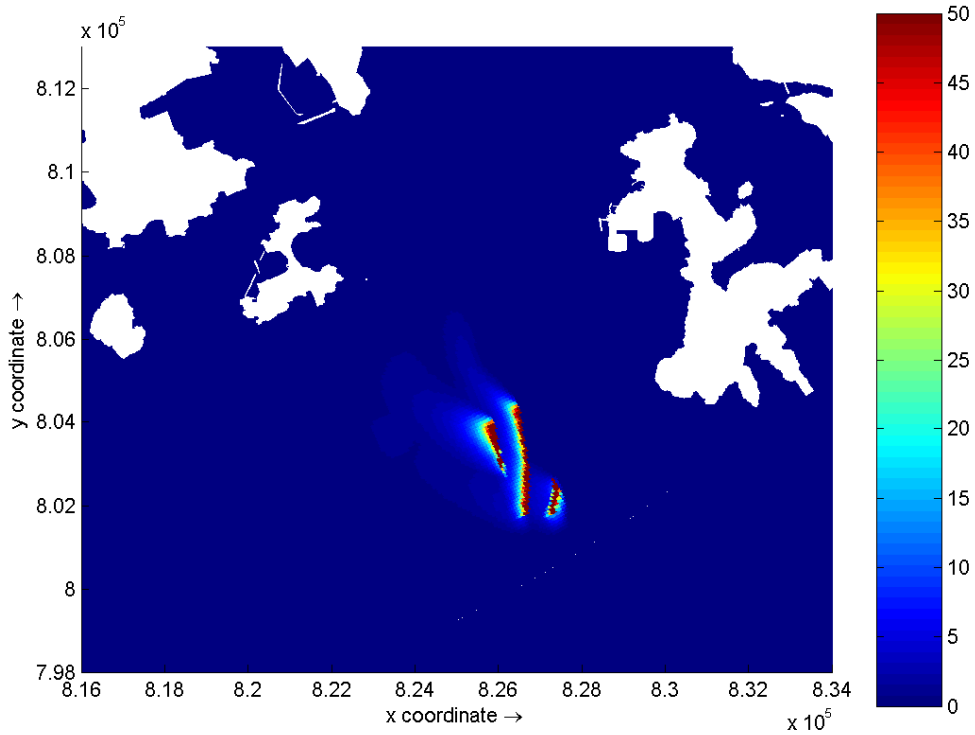




Suspended Solids (mg/L) – maximum bottom layer elevation on Days 1 and 2 of Jetting at Lamma Island
Dry Season

Environmental
Resources
Management

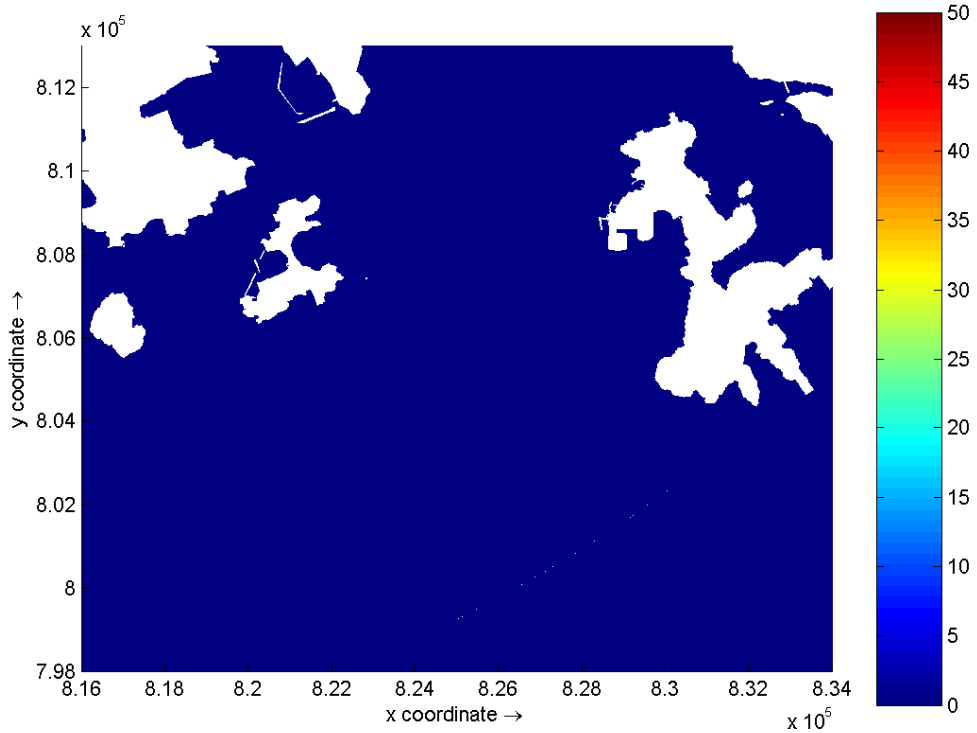
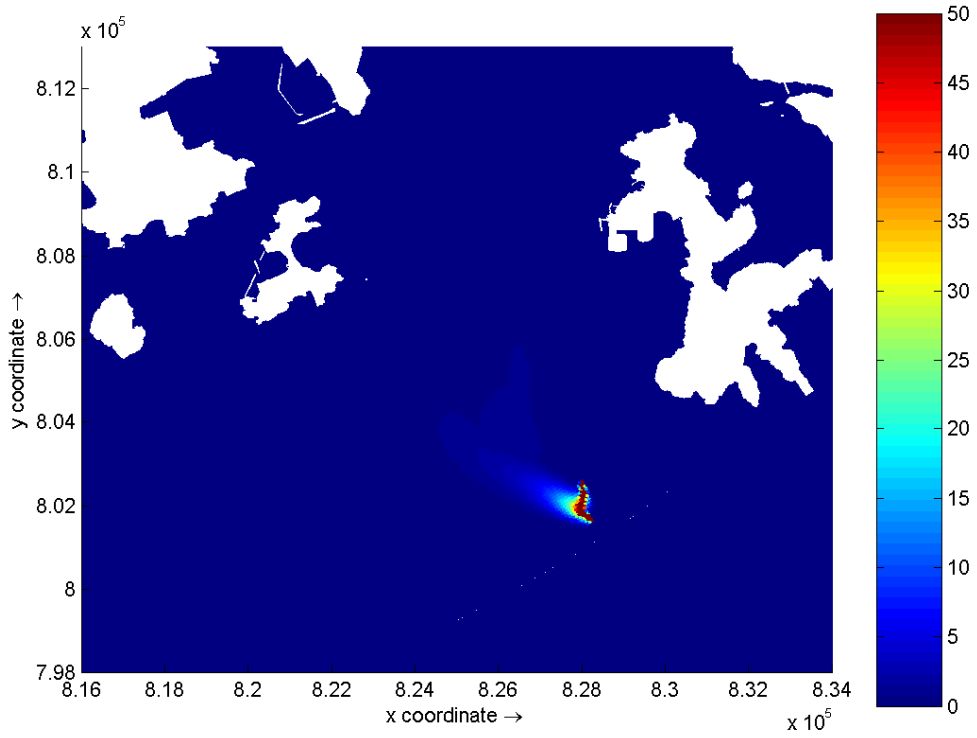




Suspended Solids (mg/L) – maximum bottom layer elevation on Days 3 and 4 of
 Jetting at Lamma Island
 Dry Season

**Environmental
 Resources
 Management**

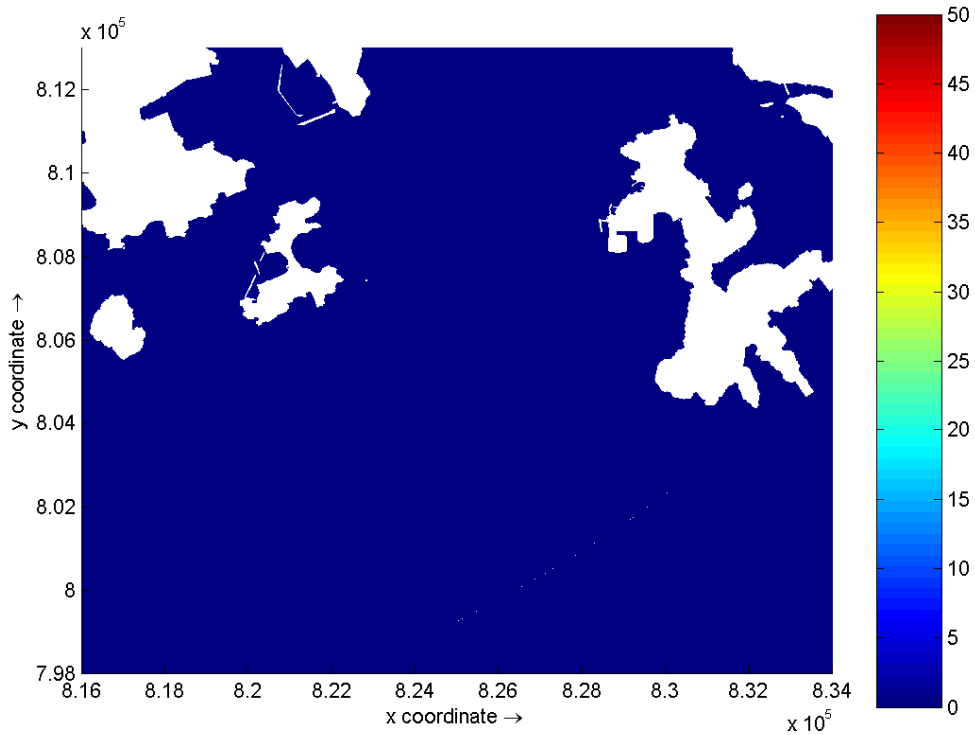
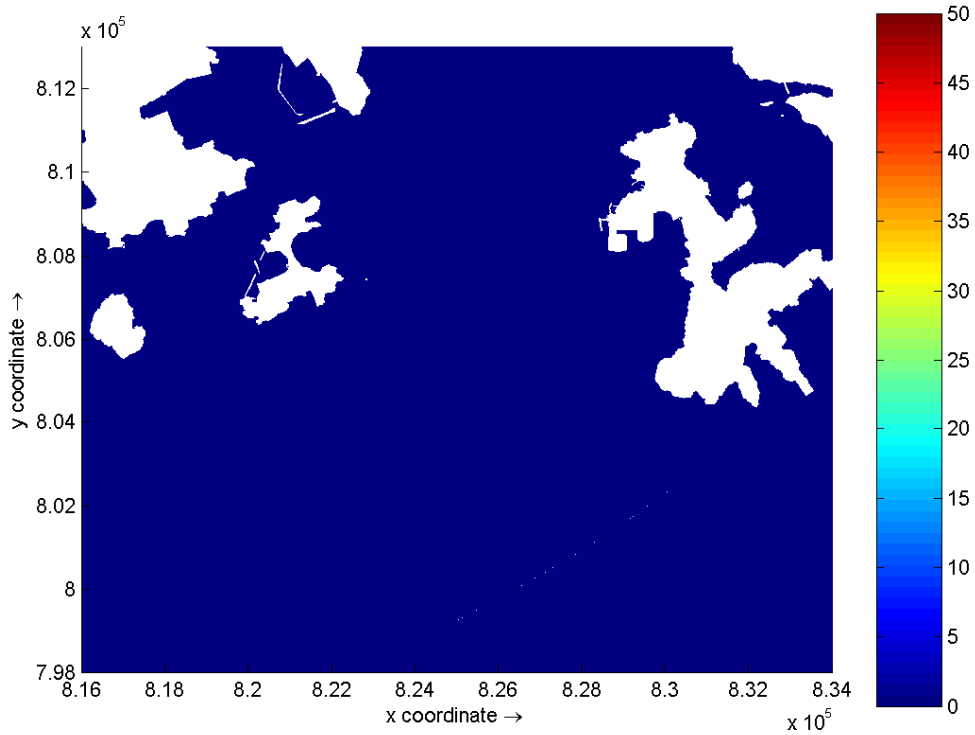




Suspended Solids (mg/L) – maximum bottom layer elevation on Days 5 and 6 of
 Jetting at Lamma Island
 Dry Season

Environmental
 Resources
 Management

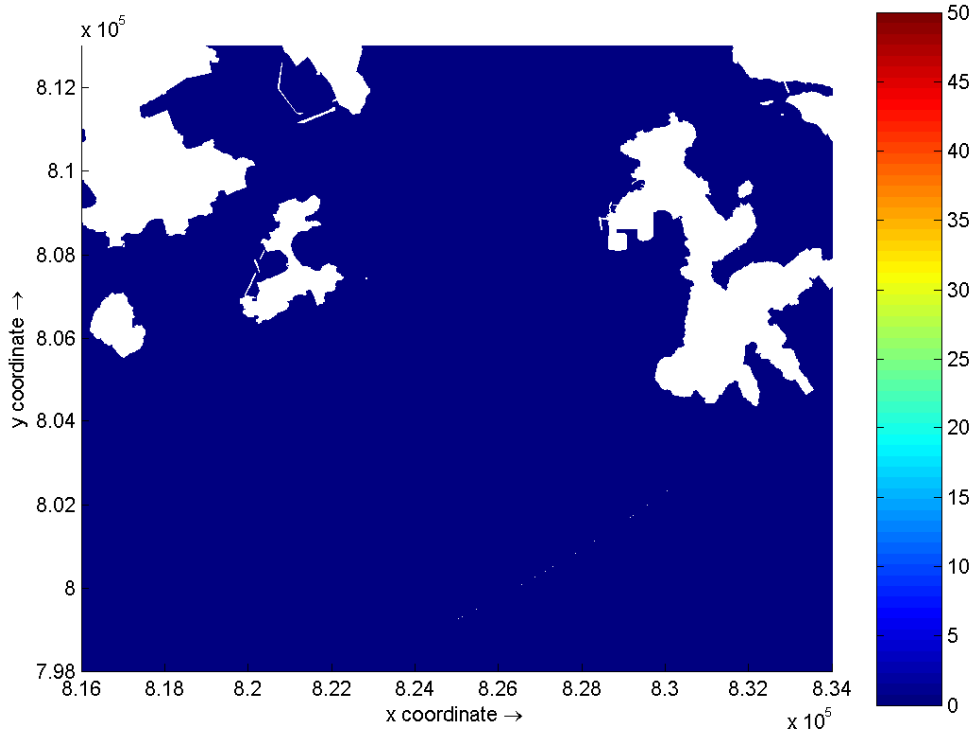
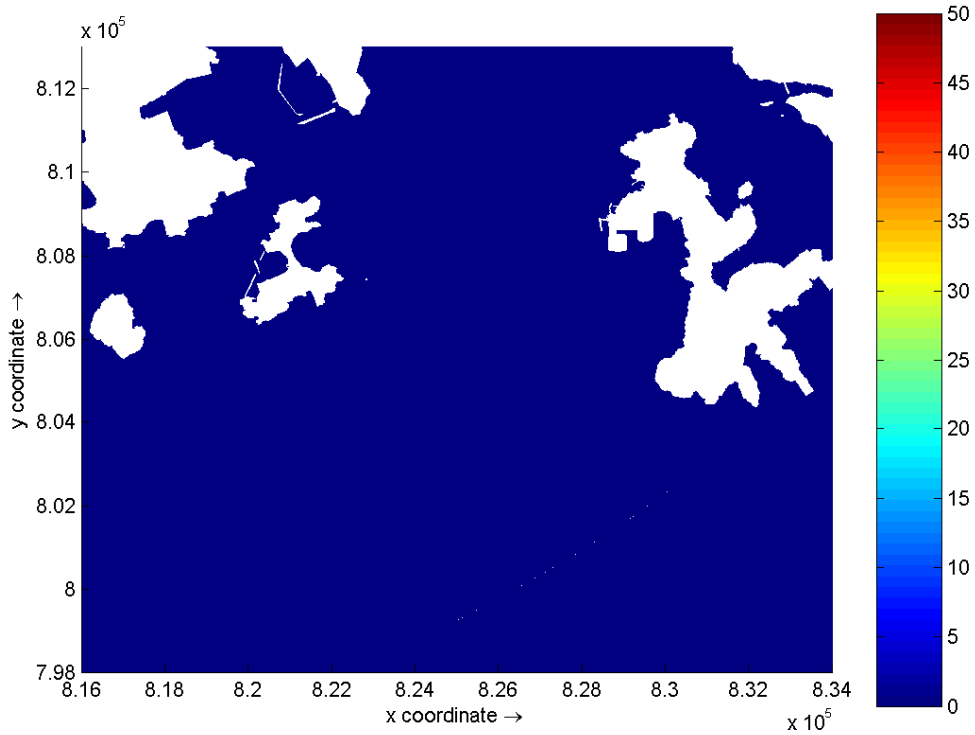




Suspended Solids (mg/L) – maximum bottom layer elevation on Days 7 and 8 of
 Jetting at Lamma Island
 Dry Season

Environmental
 Resources
 Management

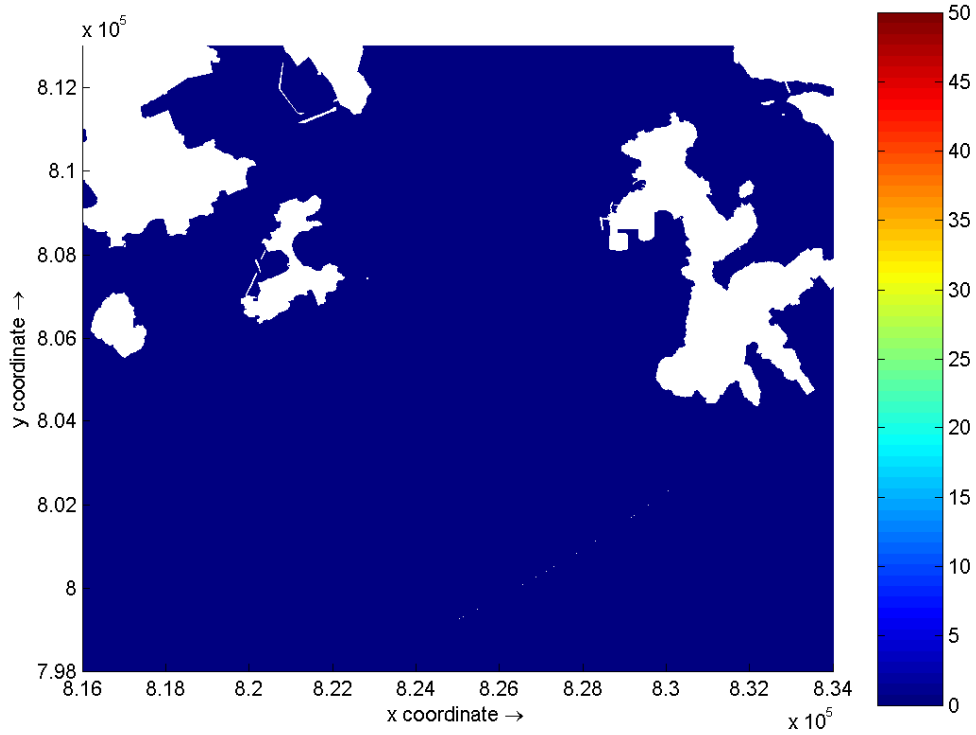
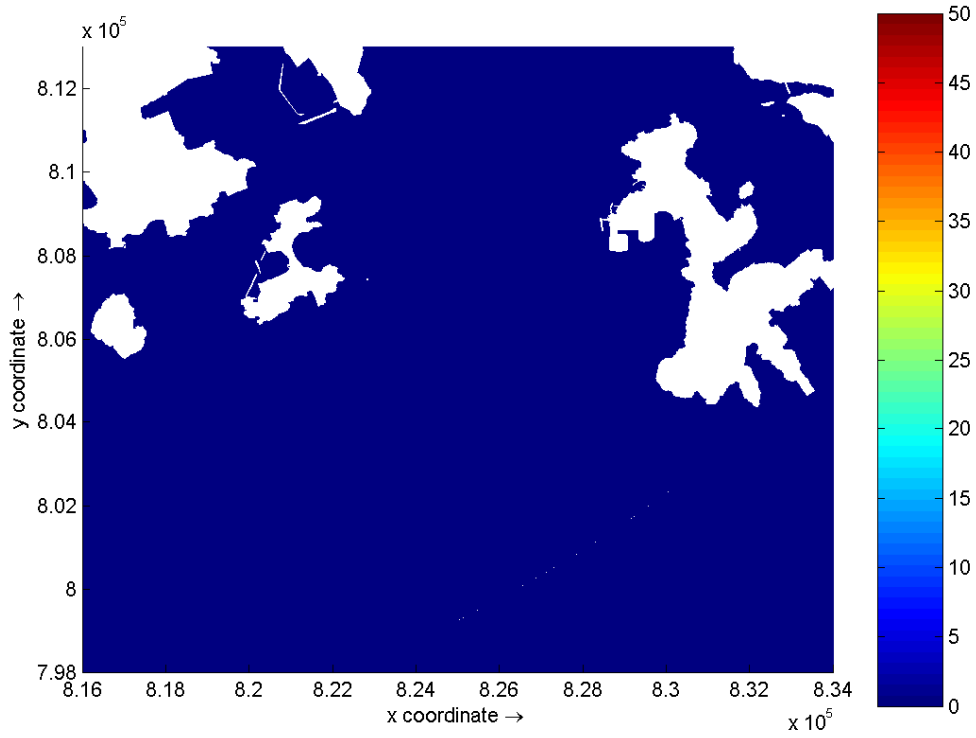




Suspended Solids (mg/L) – maximum bottom layer elevation on Days 9 and 10 of
 Jetting at Lamma Island
 Dry Season

Environmental
 Resources
 Management

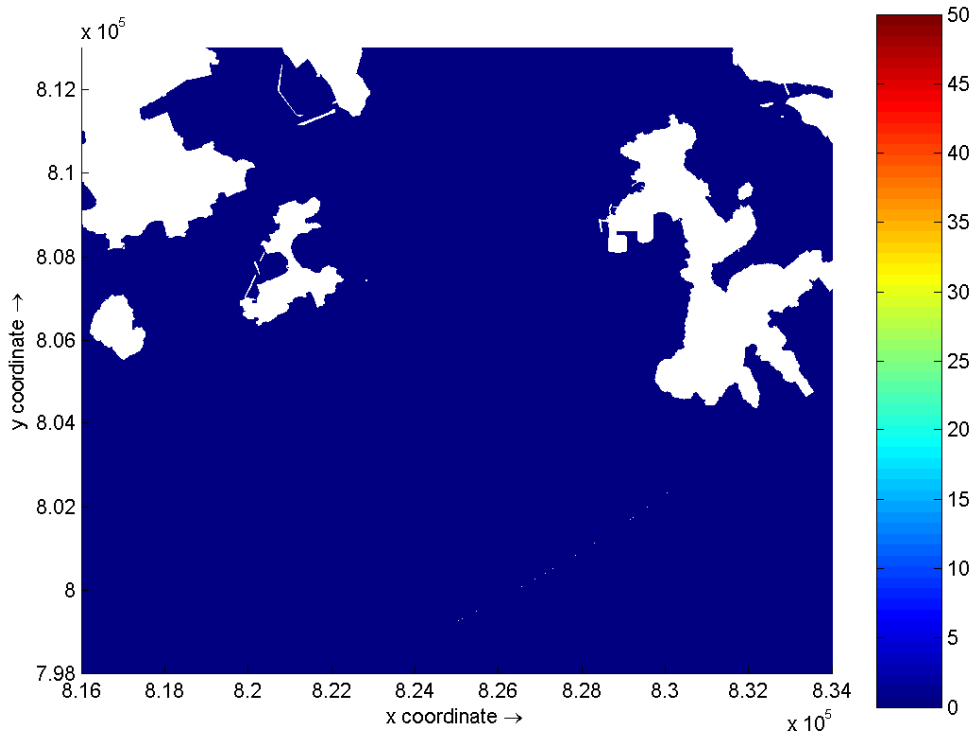
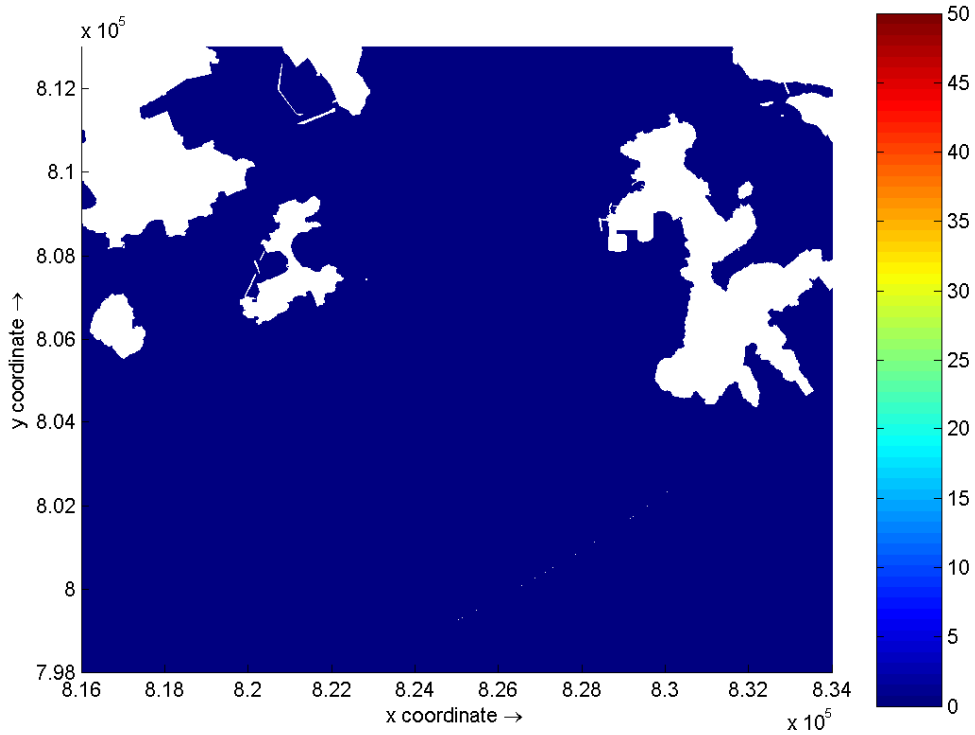




Suspended Solids (mg/L) – maximum bottom layer elevation on Days 11 and 12 of Jetting at Lamma Island Dry Season

Environmental Resources Management

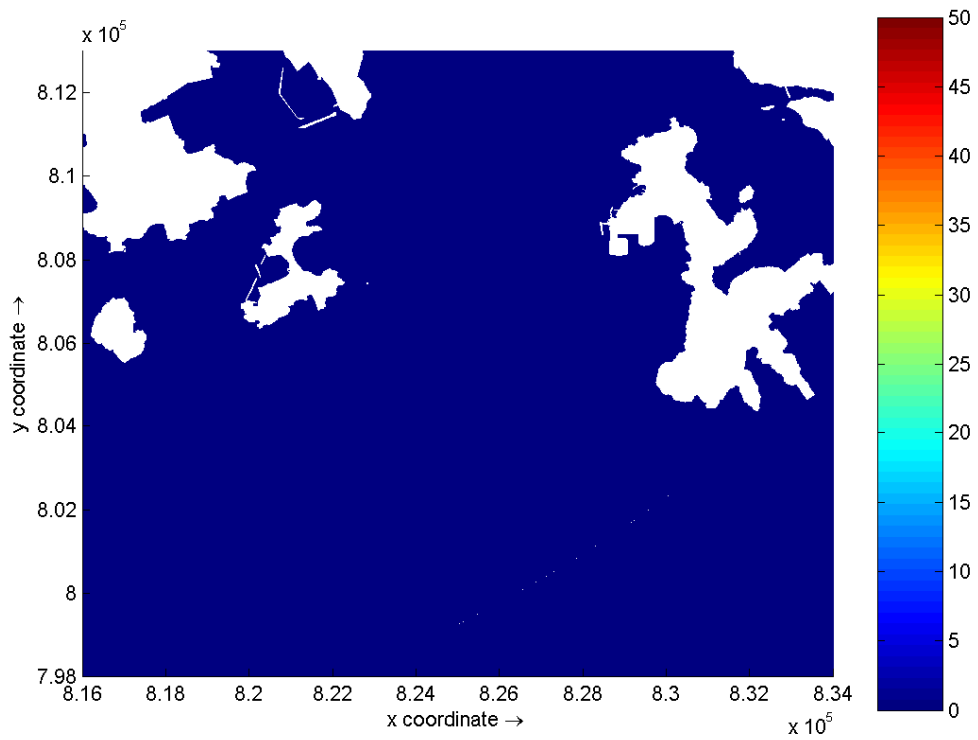




Suspended Solids (mg/L) – maximum bottom layer elevation on Days 13 and 14 of Jetting at Lamma Island Dry Season

Environmental
Resources
Management

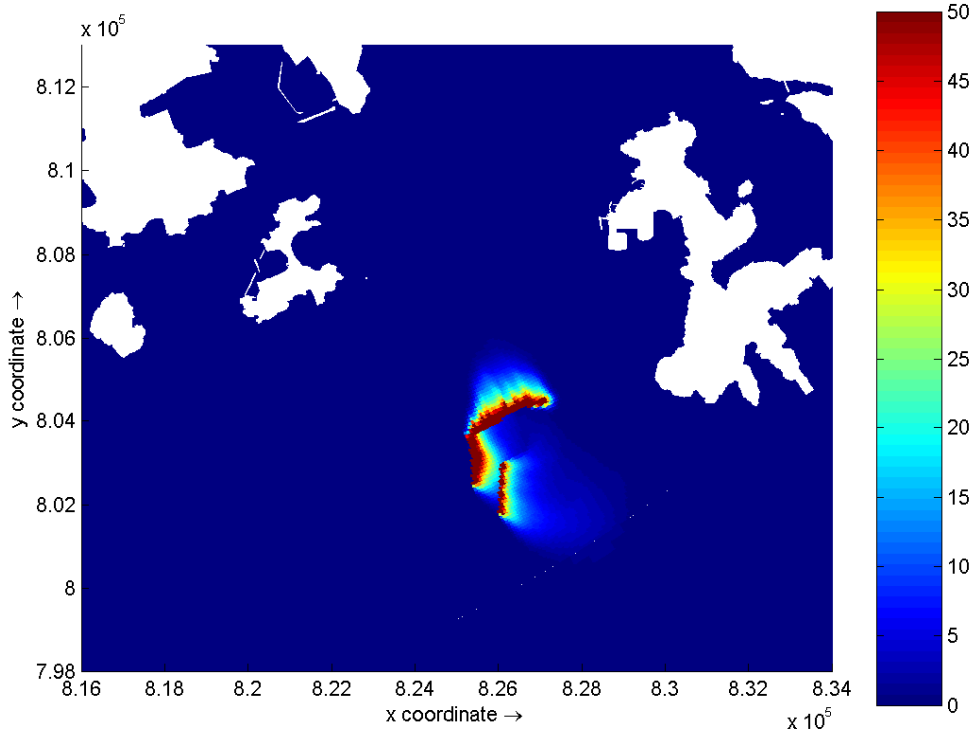
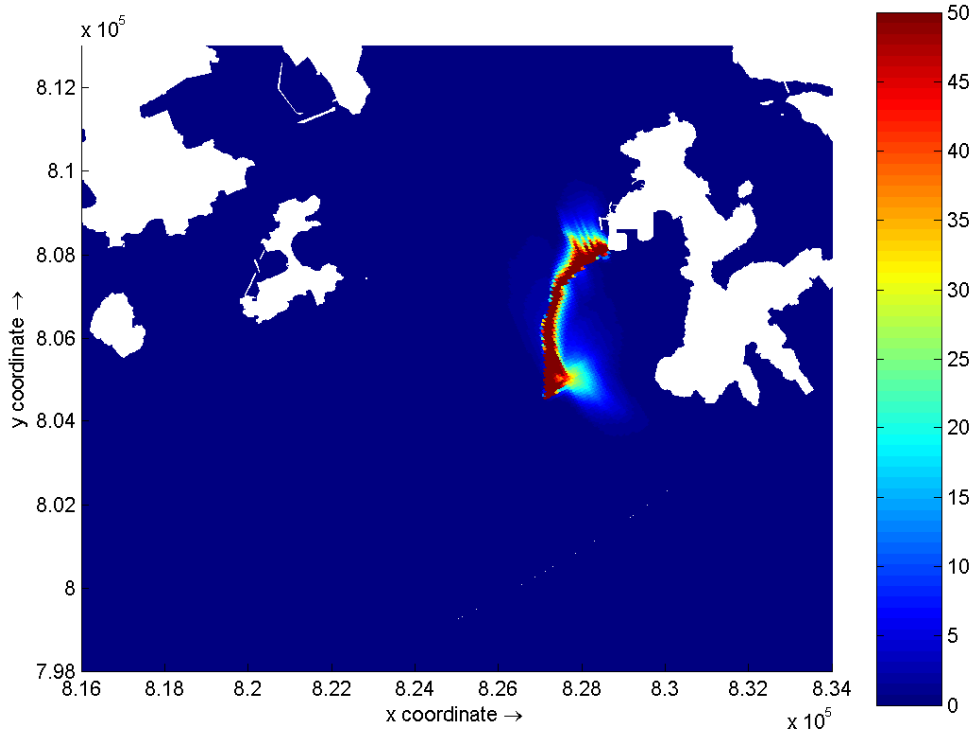




Suspended Solids (mg/L) – maximum bottom layer elevation on Day 15 of Jetting
at Lamma Island
Dry Season

Environmental
Resources
Management

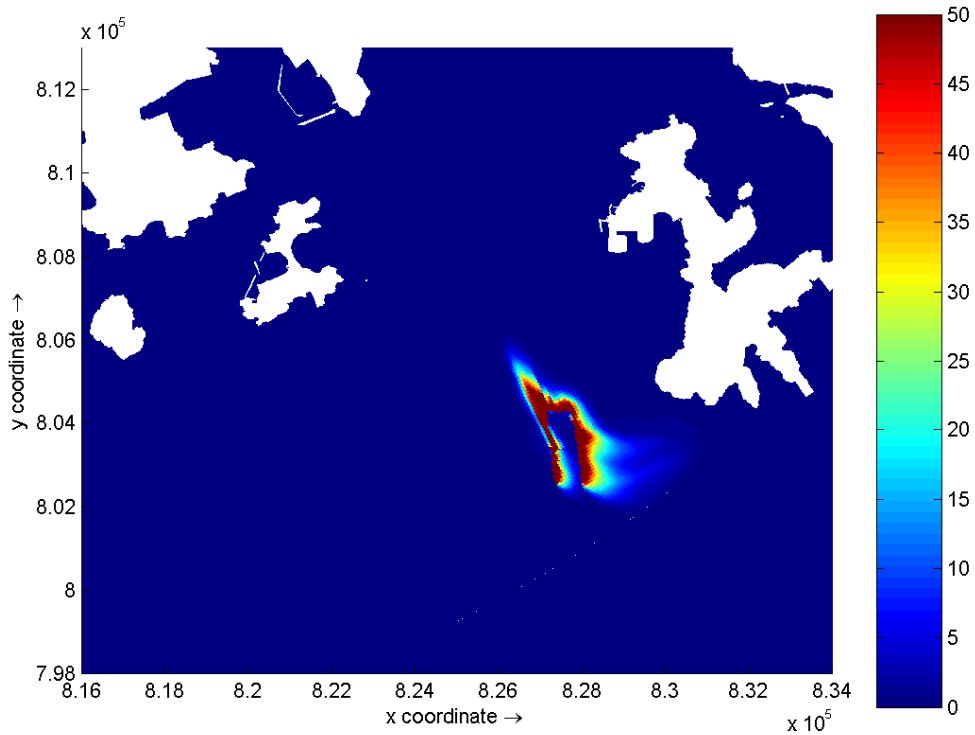
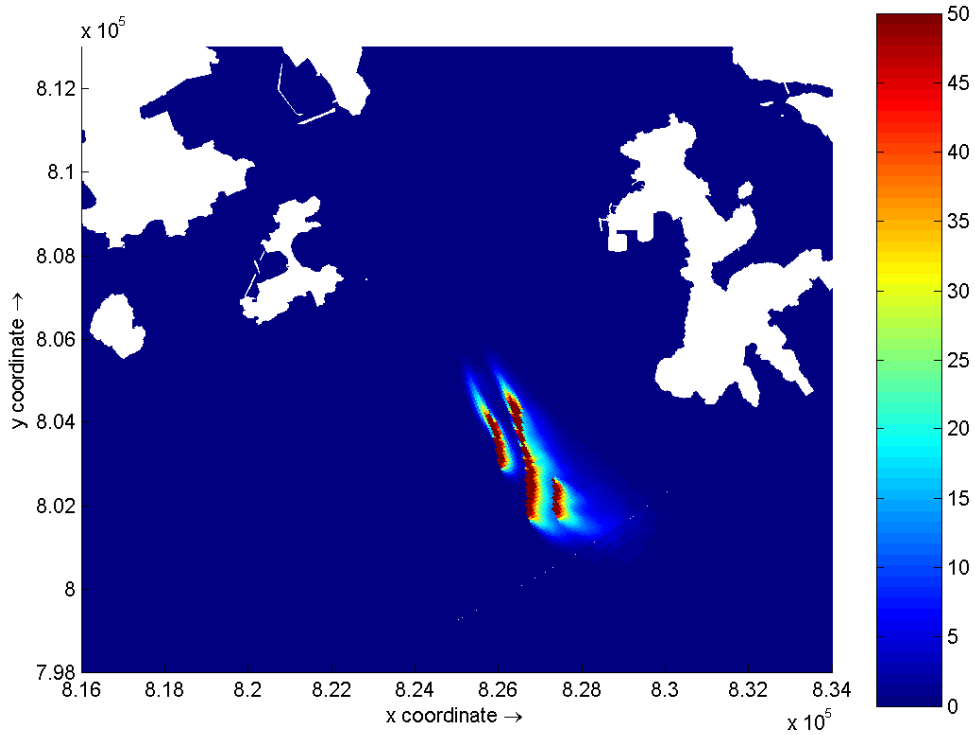




Suspended Solids (mg/L) – maximum bottom layer elevation on Days 1 and 2 of
 Jetting at Lamma Island
 Wet Season

**Environmental
 Resources
 Management**

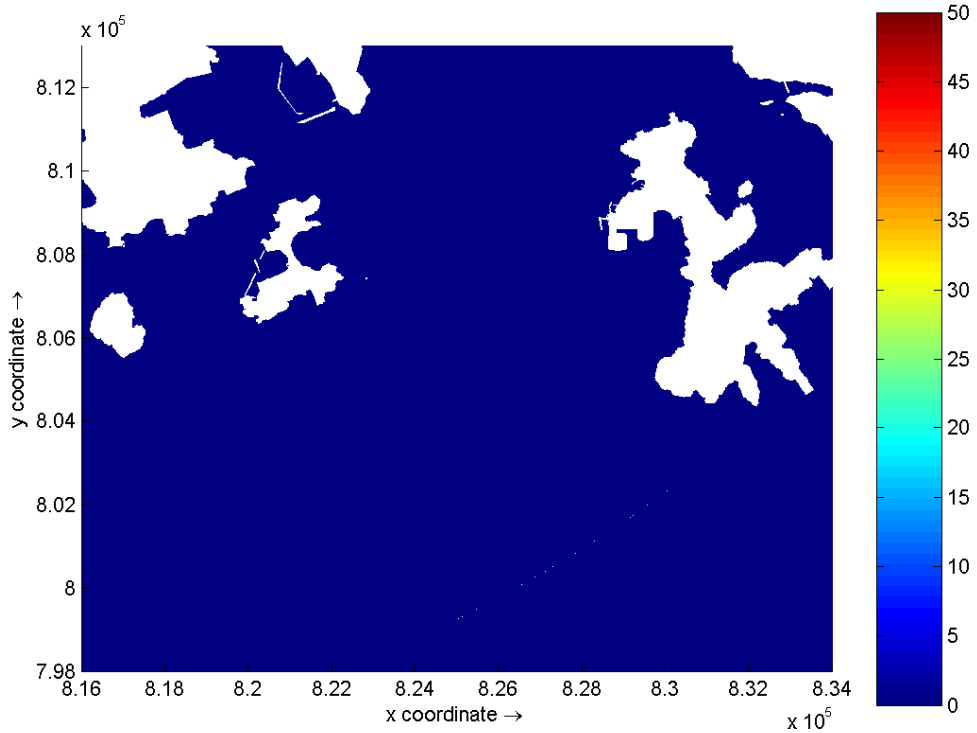
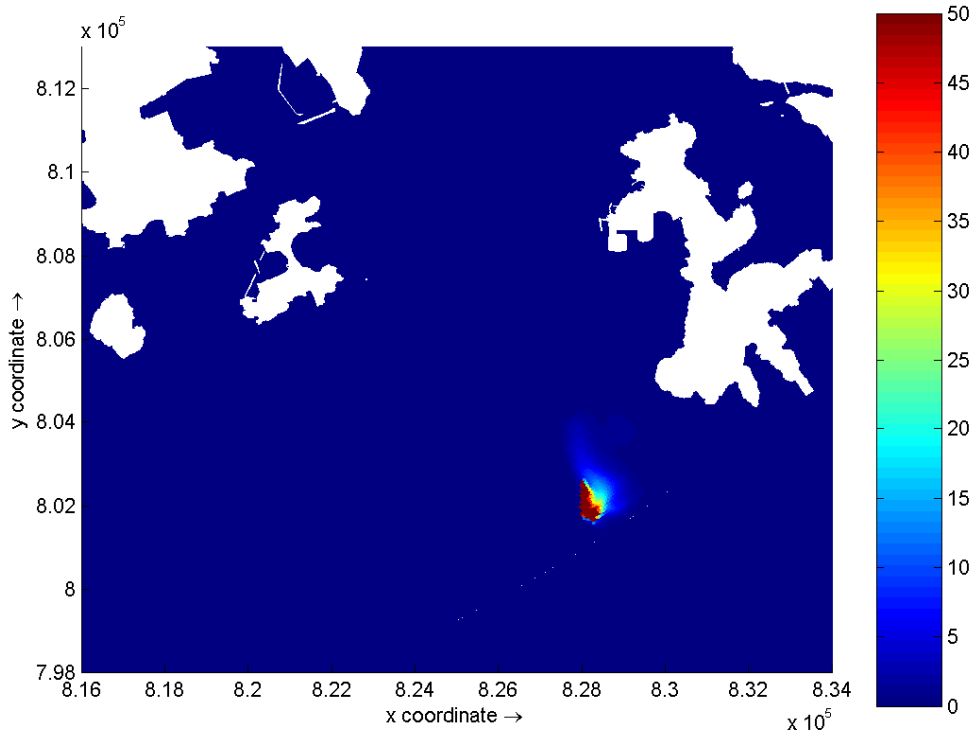




Suspended Solids (mg/L) – maximum bottom layer elevation on Days 3 and 4 of
 Jetting at Lamma Island
 Wet Season

**Environmental
 Resources
 Management**

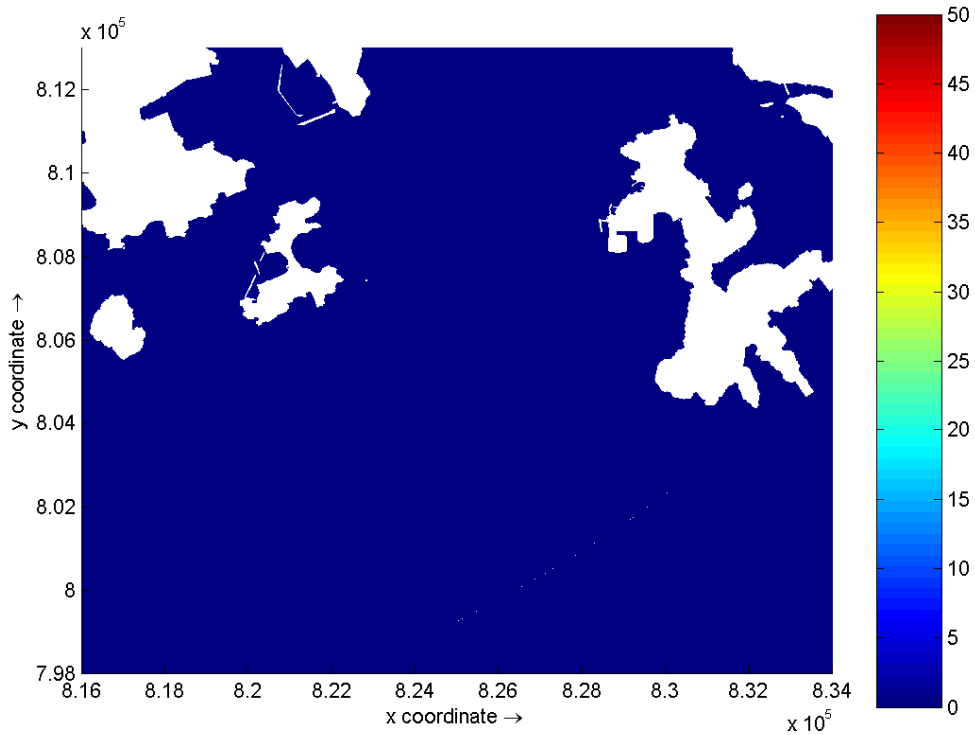
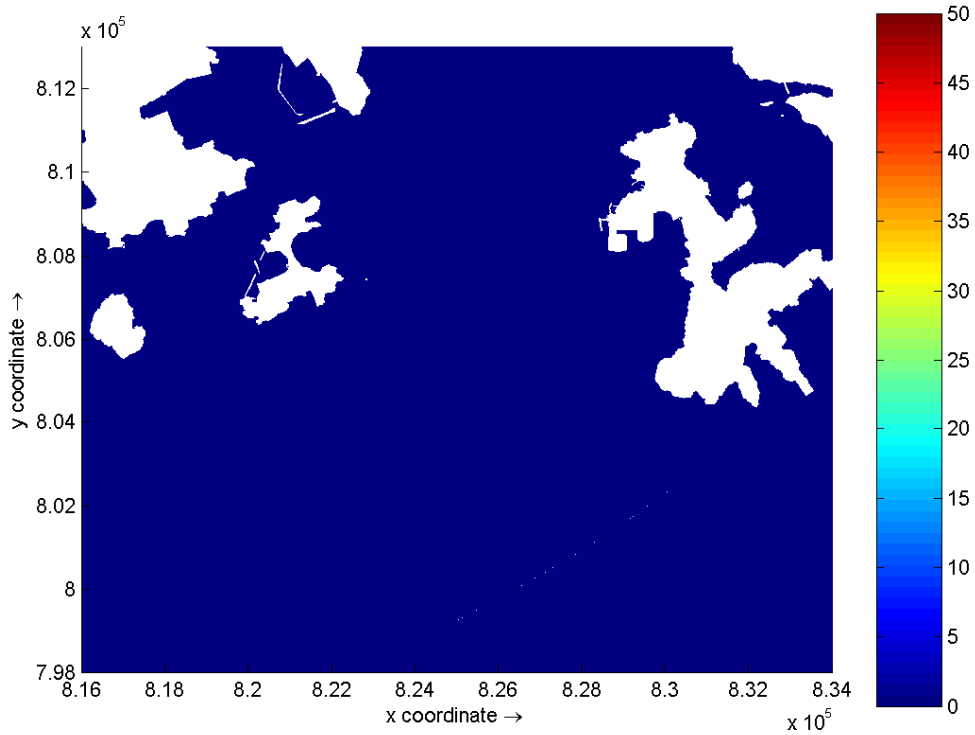




Suspended Solids (mg/L) – maximum bottom layer elevation on Days 5 and 6 of
 Jetting at Lamma Island
 Wet Season

**Environmental
 Resources
 Management**

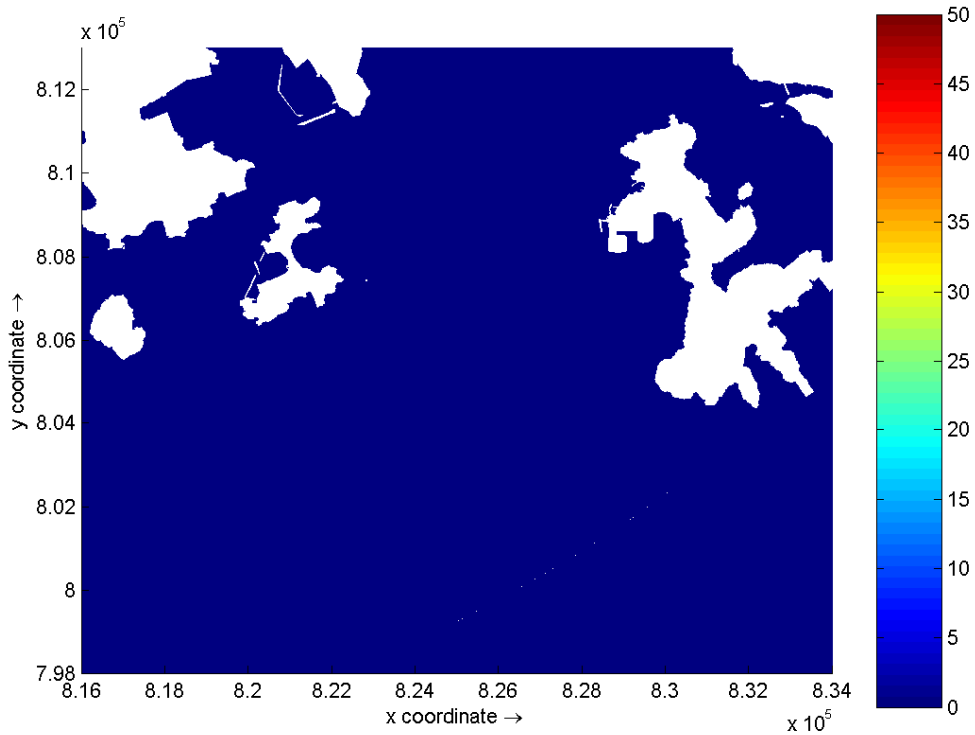
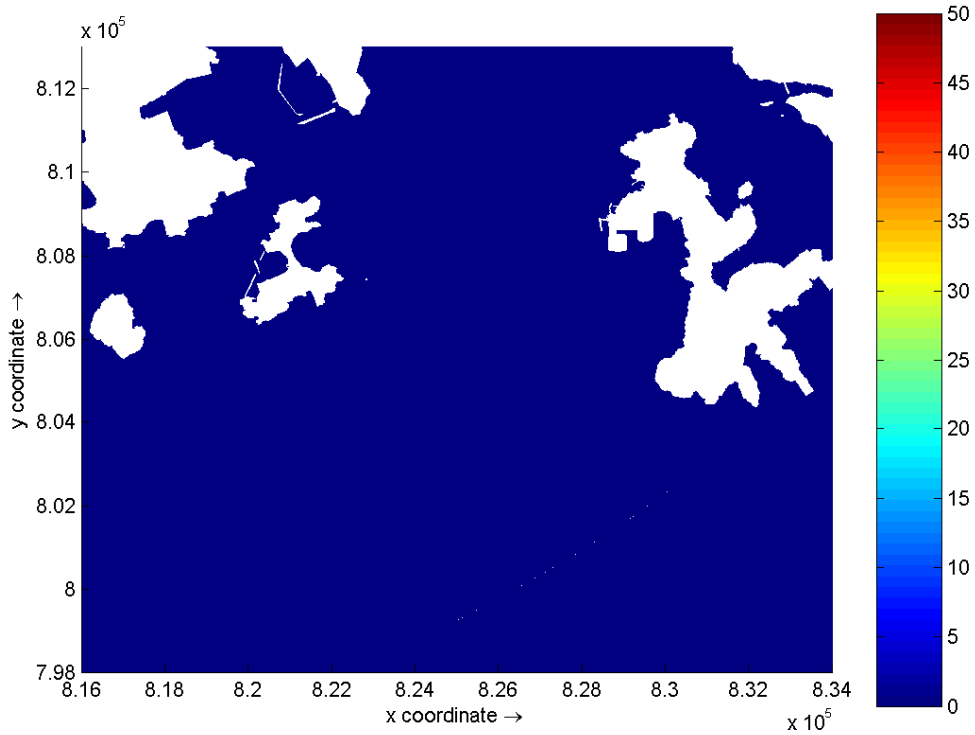




Suspended Solids (mg/L) – maximum bottom layer elevation on Days 7 and 8 of
 Jetting at Lamma Island
 Wet Season

Environmental
 Resources
 Management

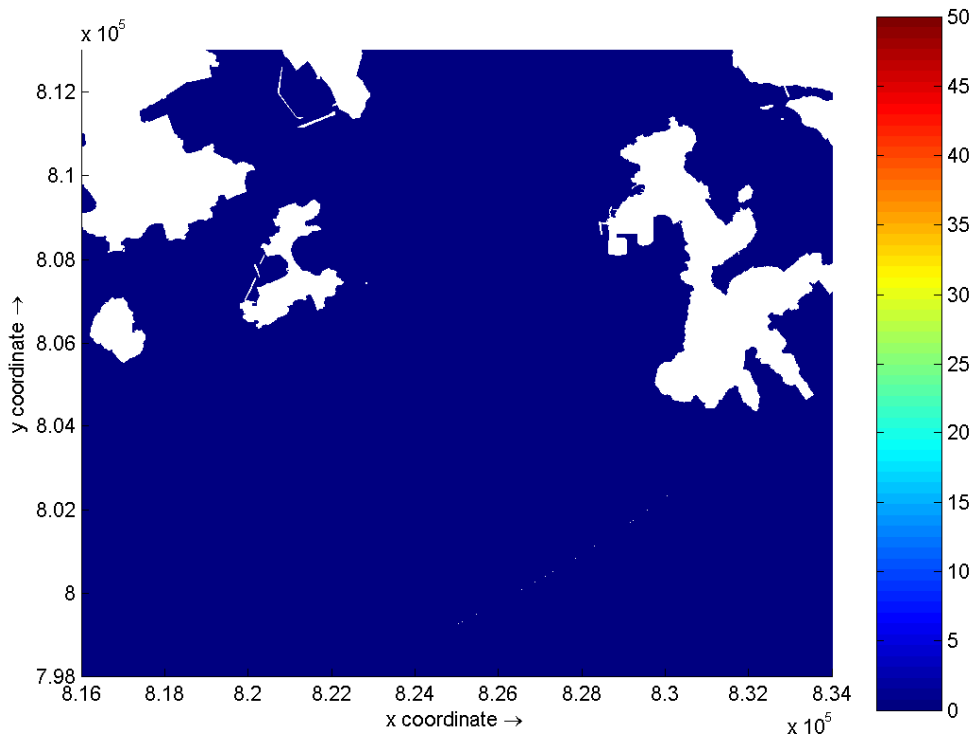
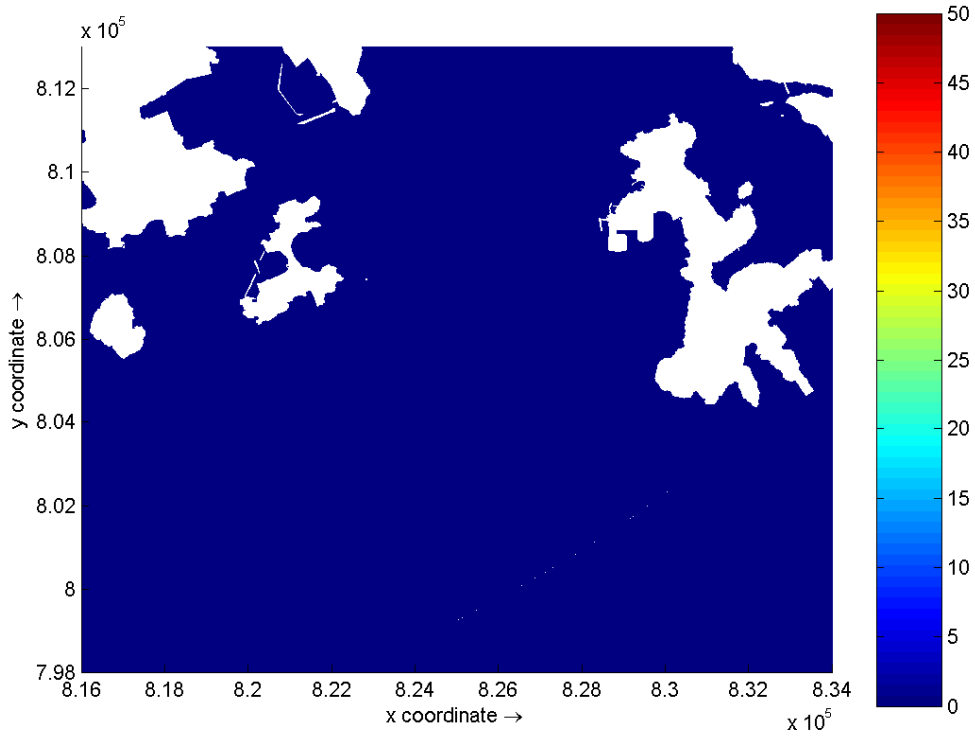




Suspended Solids (mg/L) – maximum bottom layer elevation on Days 9 and 10 of
 Jetting at Lamma Island
 Wet Season

Environmental
 Resources
 Management

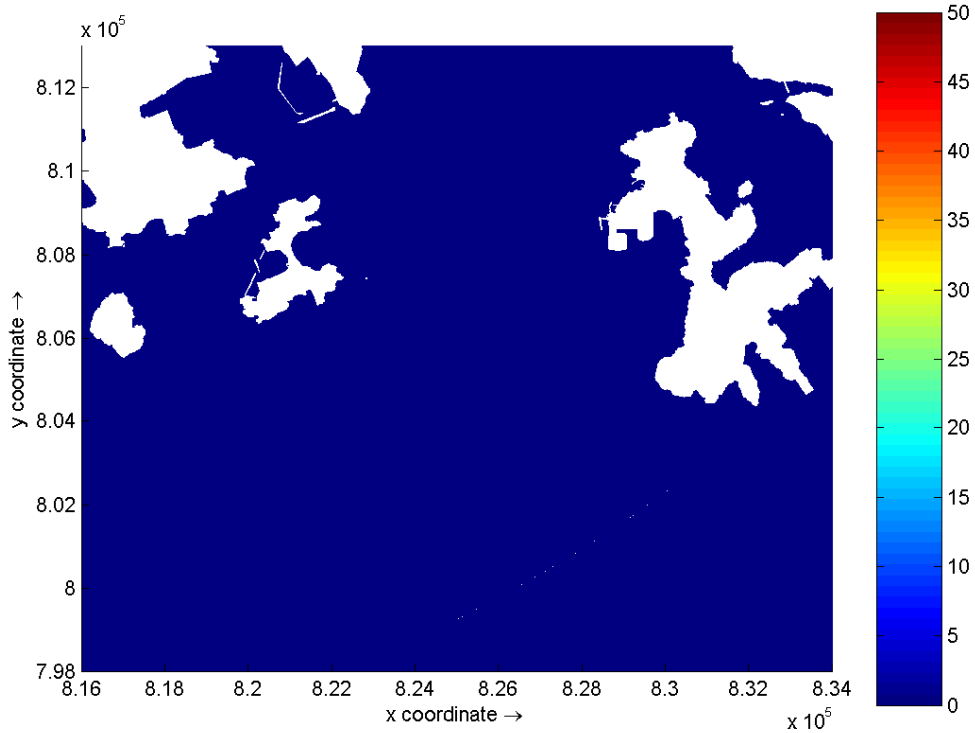
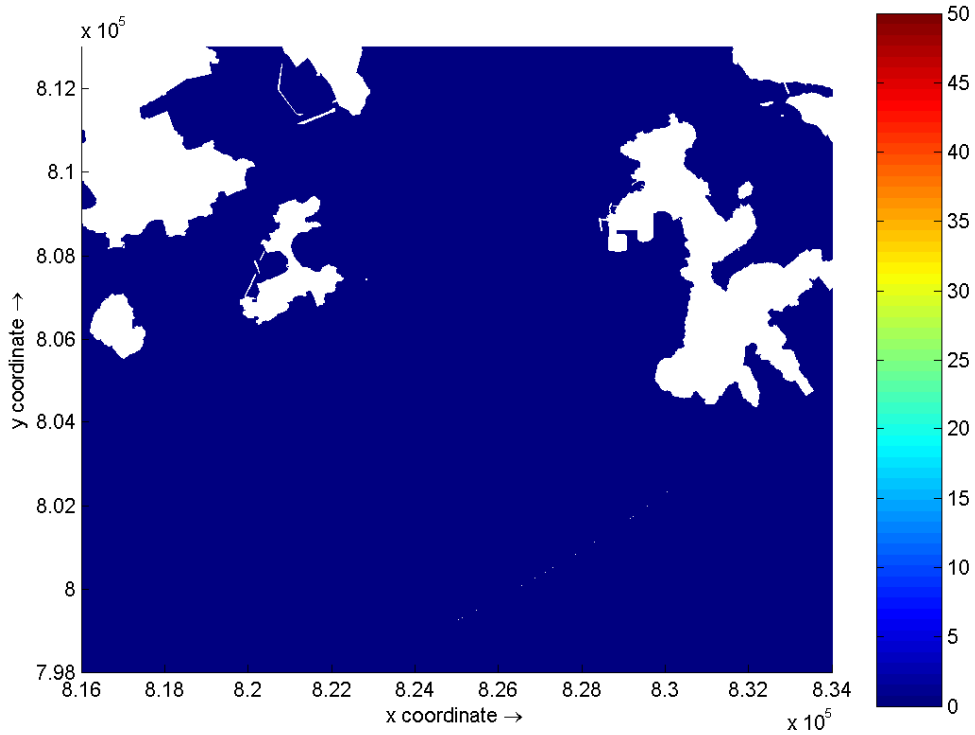




Suspended Solids (mg/L) – maximum bottom layer elevation on Days 11 and 12 of Jetting at Lamma Island
Wet Season

Environmental
Resources
Management

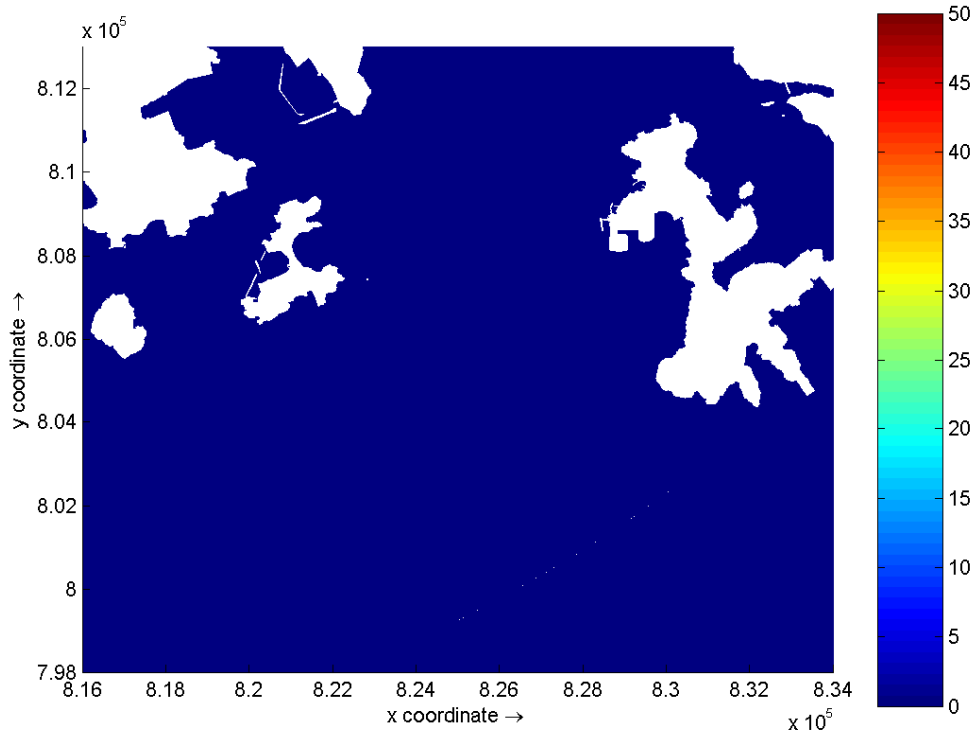




Suspended Solids (mg/L) – maximum bottom layer elevation on Days 13 and 14 of
 Jetting at Lamma Island
 Wet Season

**Environmental
 Resources
 Management**

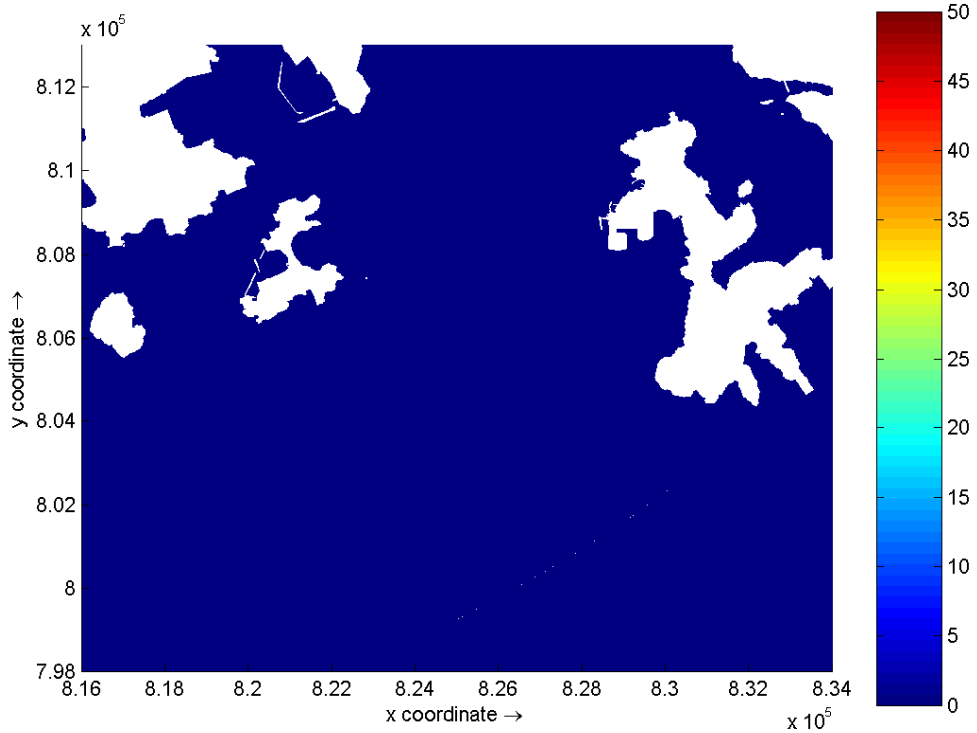
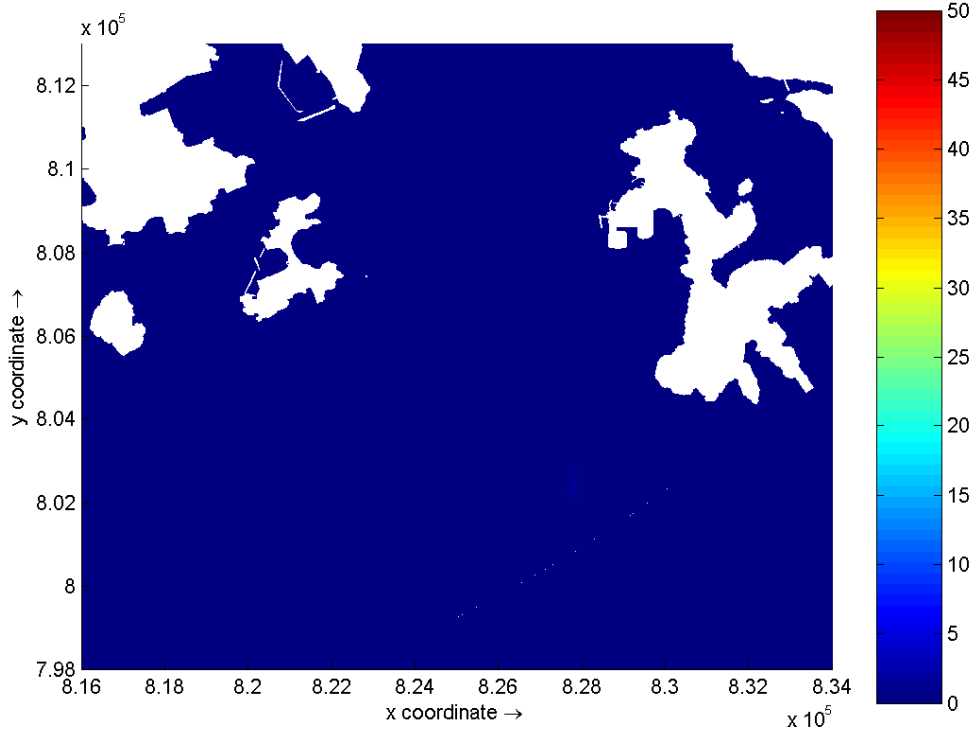




Suspended Solids (mg/L) – maximum bottom layer elevation on Day 15 of Jetting
at Lamma Island
Wet Season

Environmental
Resources
Management

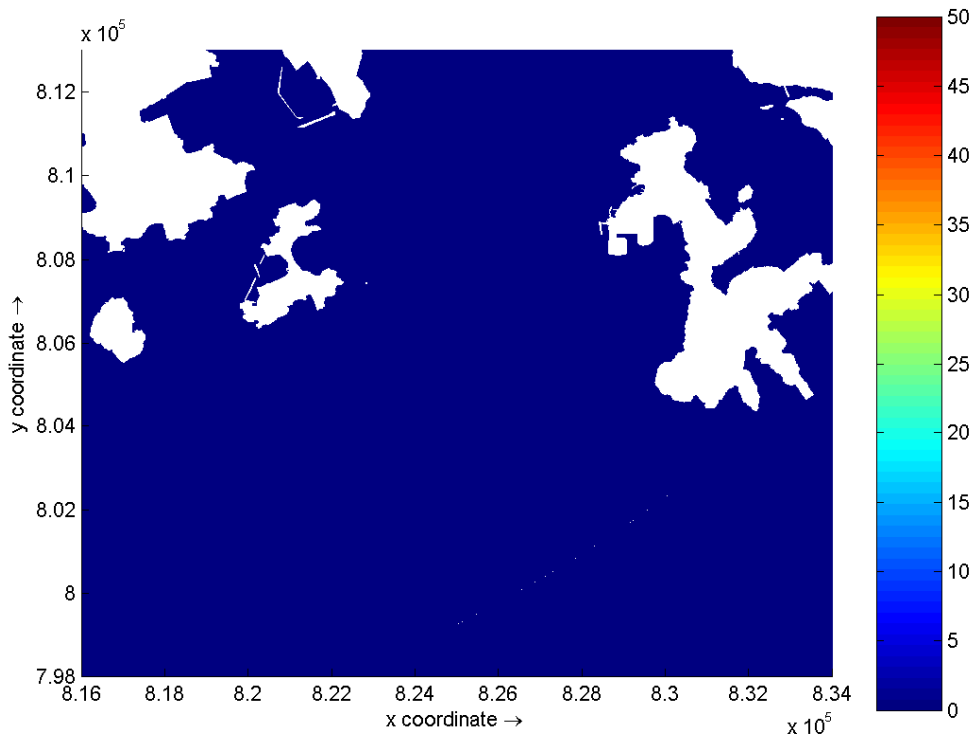
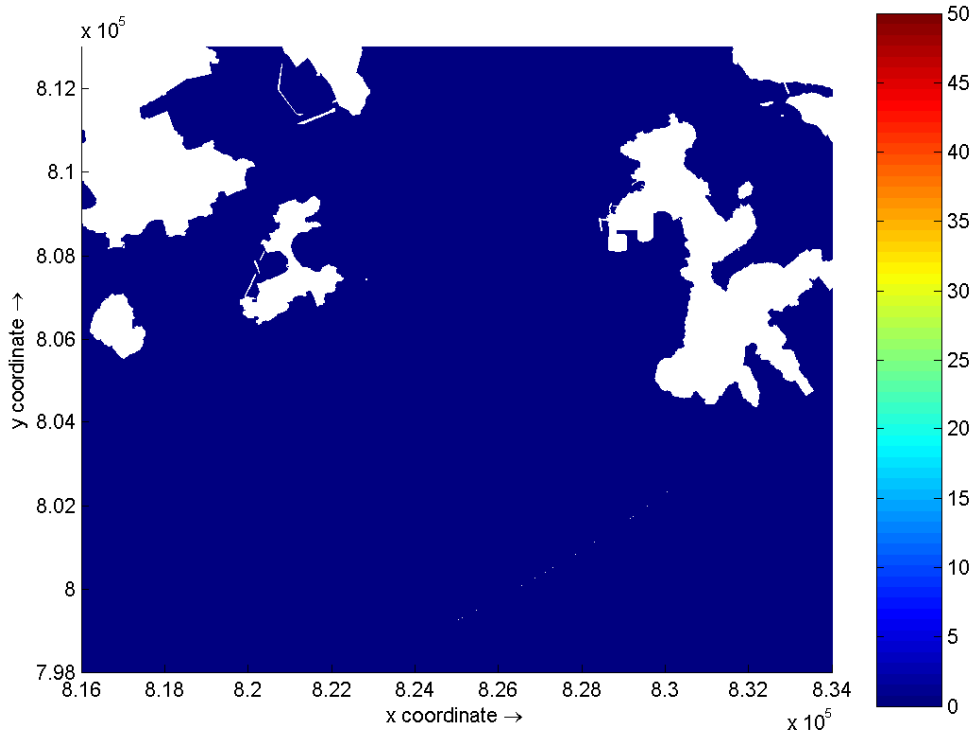




Suspended Solids (mg/L) – maximum depth average elevation on Days 1 and 2 of
 Foundation Construction at Lamma Island
 Dry Season

**Environmental
 Resources
 Management**

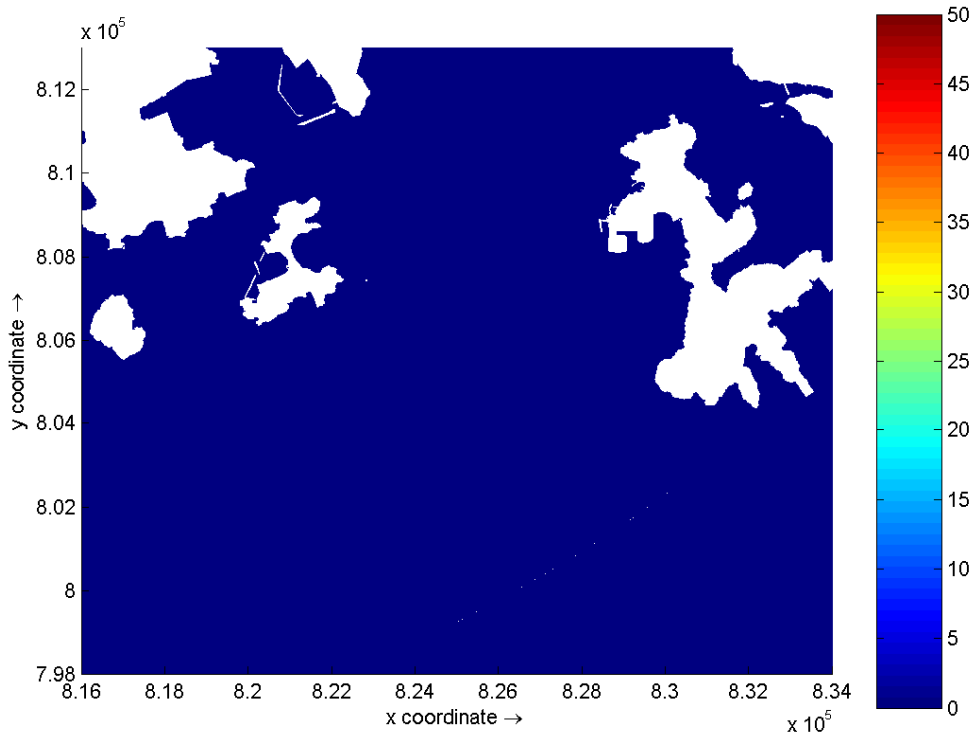
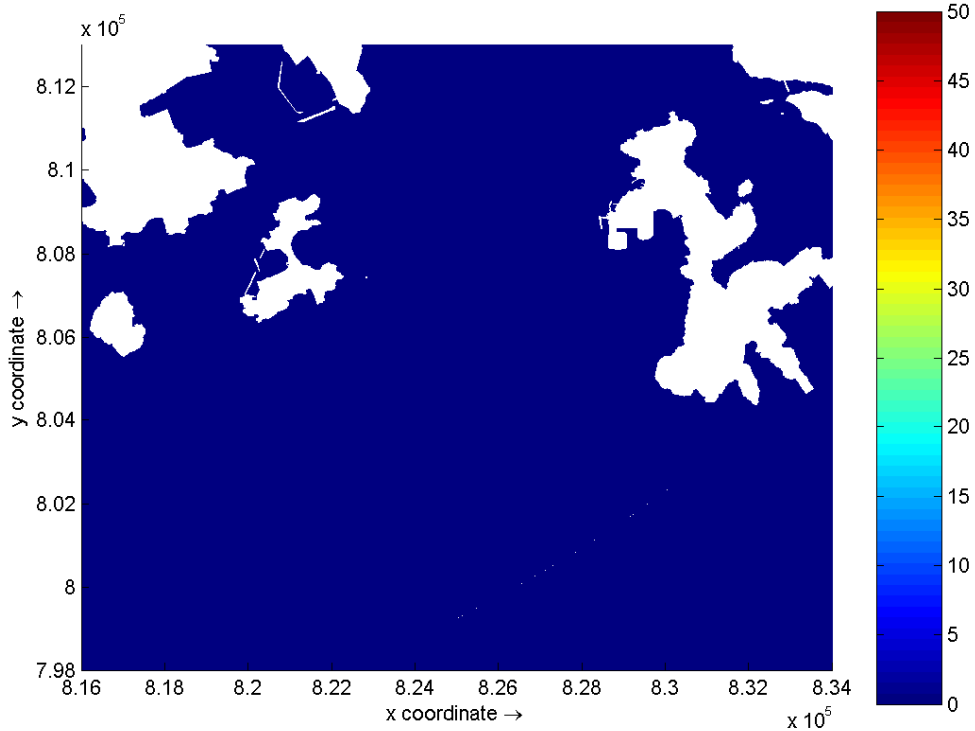




Suspended Solids (mg/L) – maximum depth average elevation on Days 3 and 4 of
 Foundation Construction at Lamma Island
 Dry Season

Environmental
 Resources
 Management

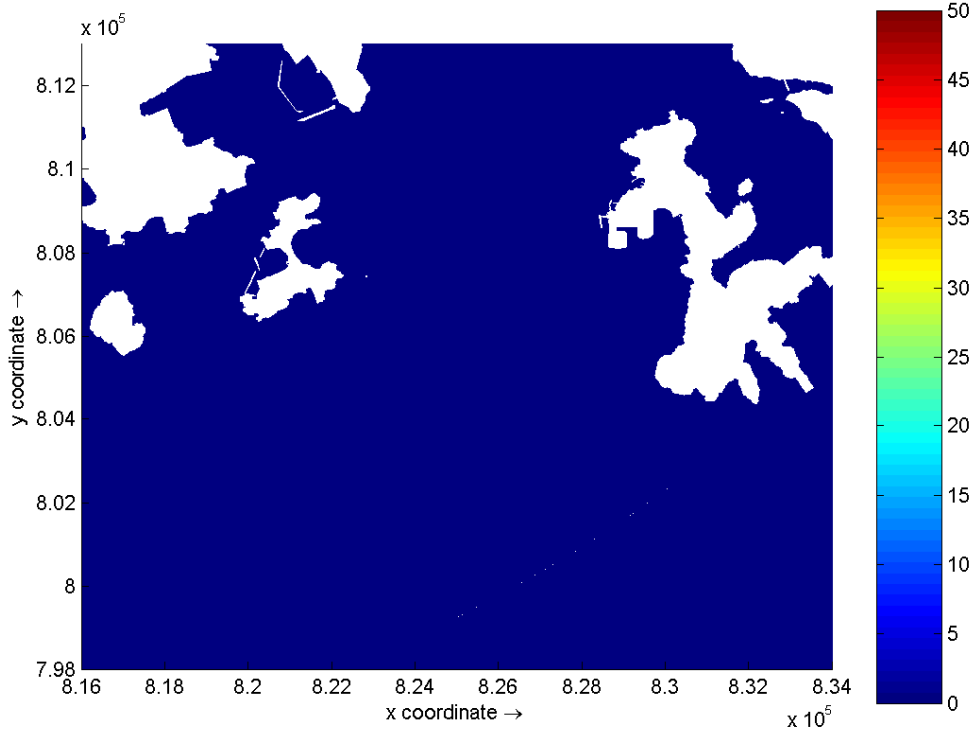
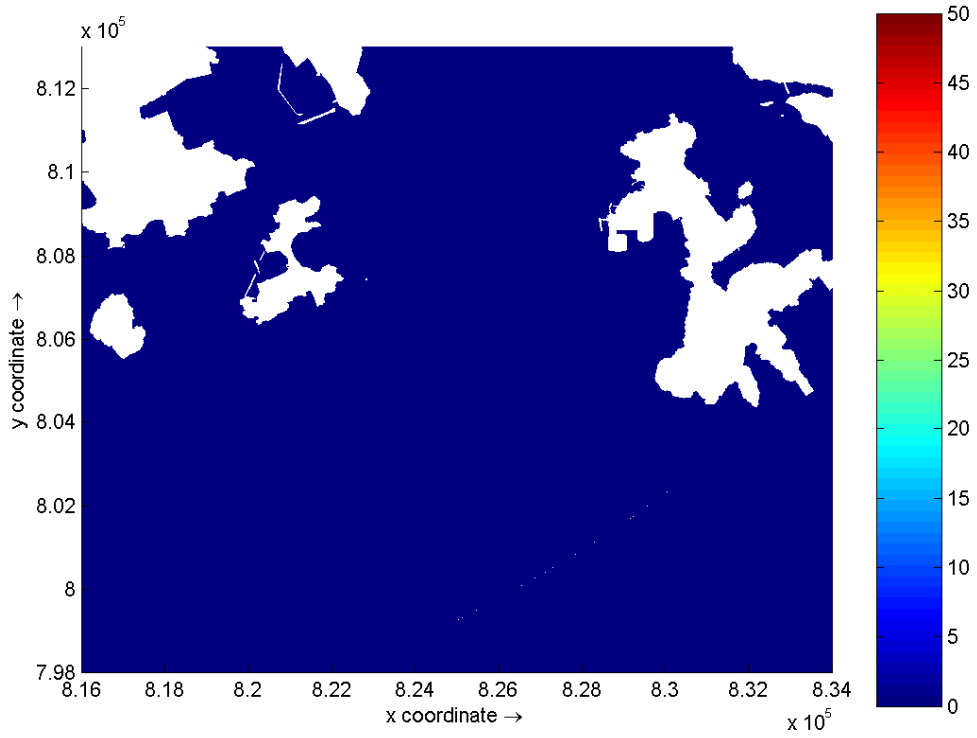




Suspended Solids (mg/L) – maximum depth average elevation on Days 5 and 6 of Foundation Construction at Lamma Island
Dry Season

**Environmental
Resources
Management**

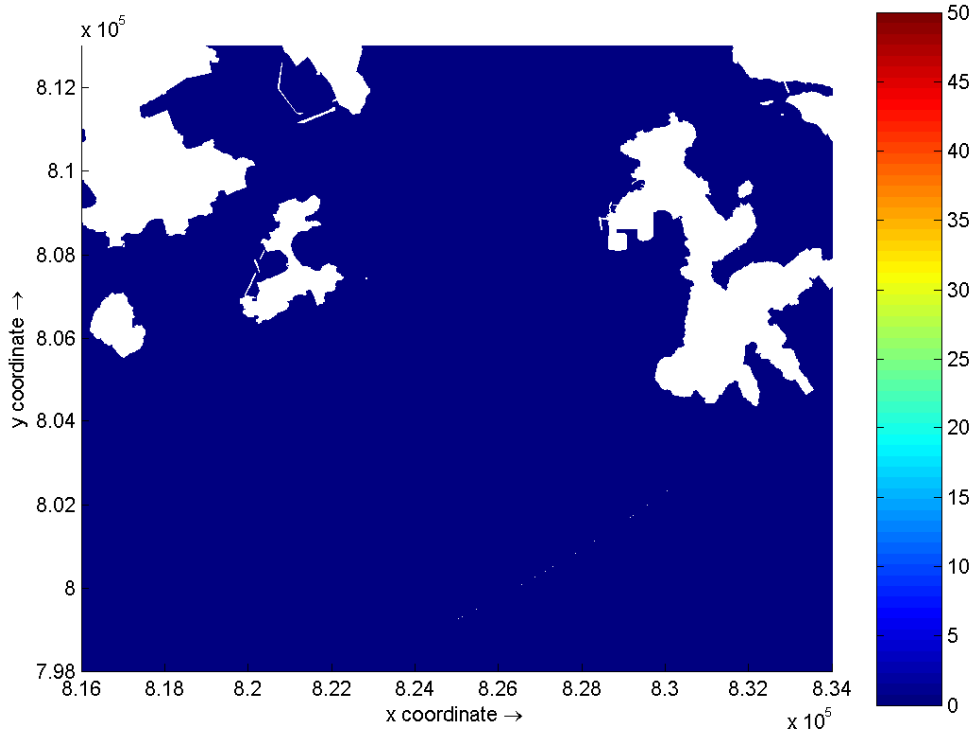
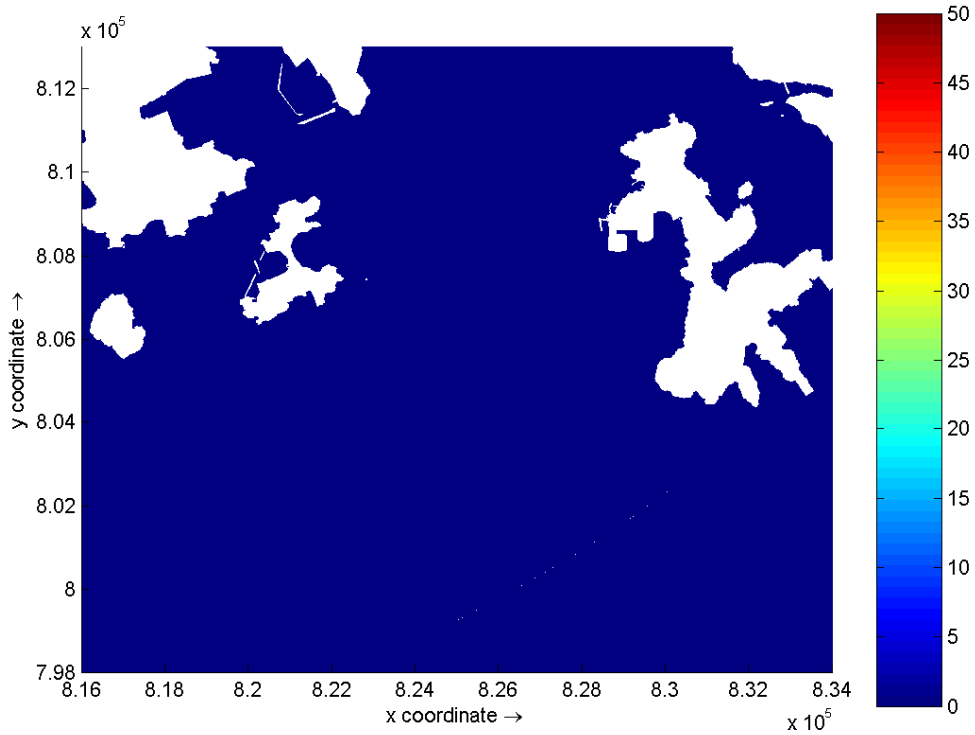




Suspended Solids (mg/L) – maximum depth average elevation on Days 7 and 8 of Foundation Construction at Lamma Island
Dry Season

Environmental
Resources
Management

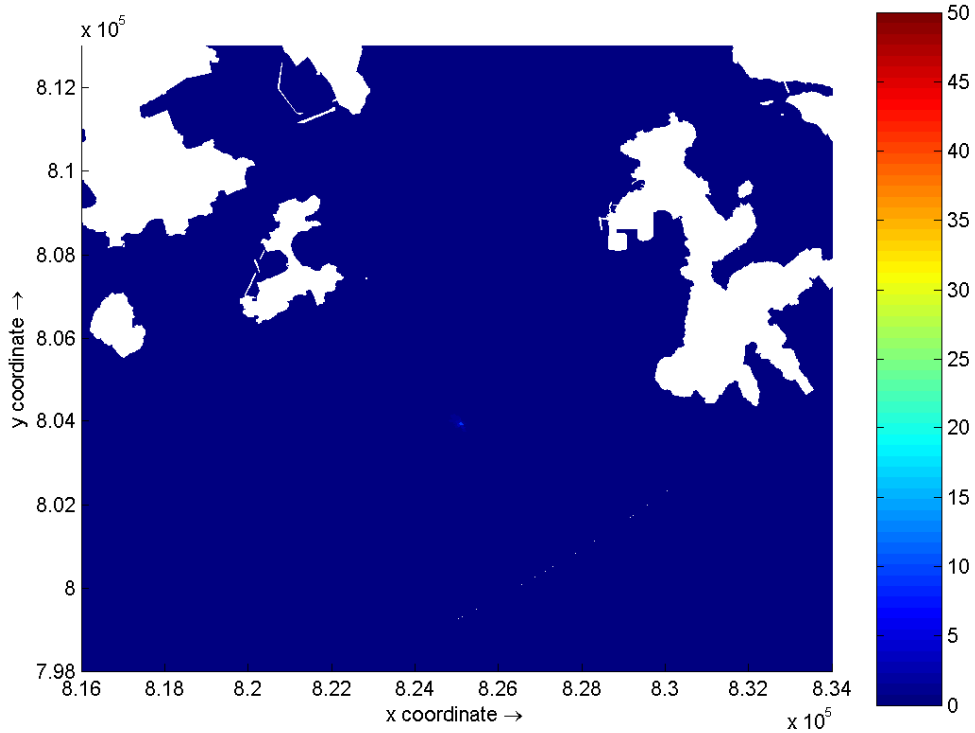
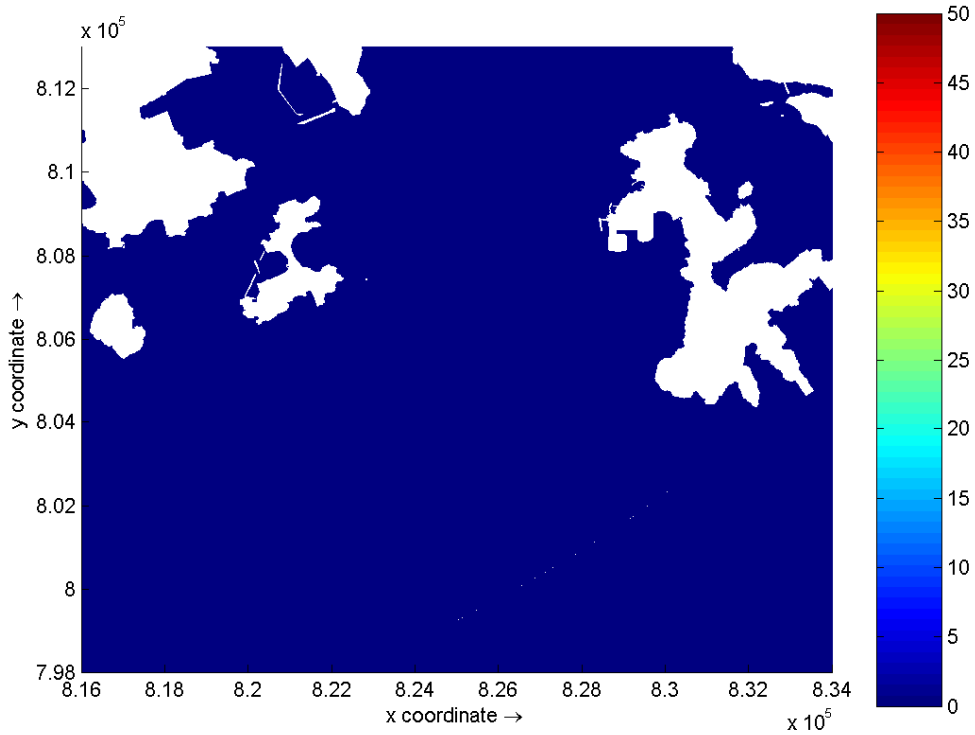




Suspended Solids (mg/L) – maximum depth average elevation on Days 9 and 10 of
 Foundation Construction at Lamma Island
 Dry Season

**Environmental
 Resources
 Management**

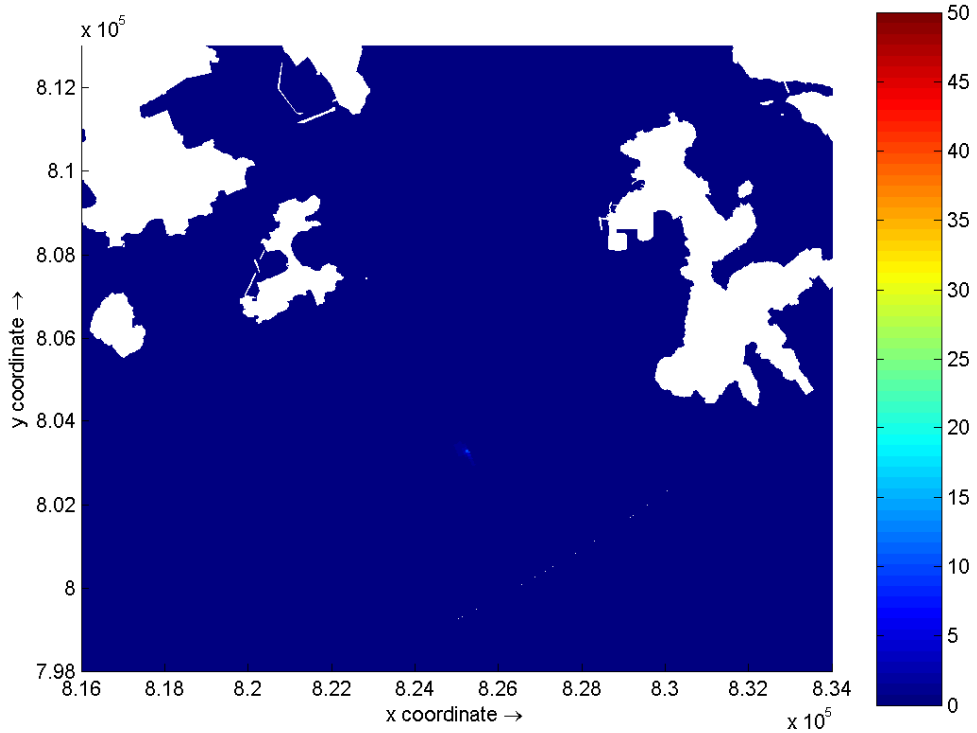
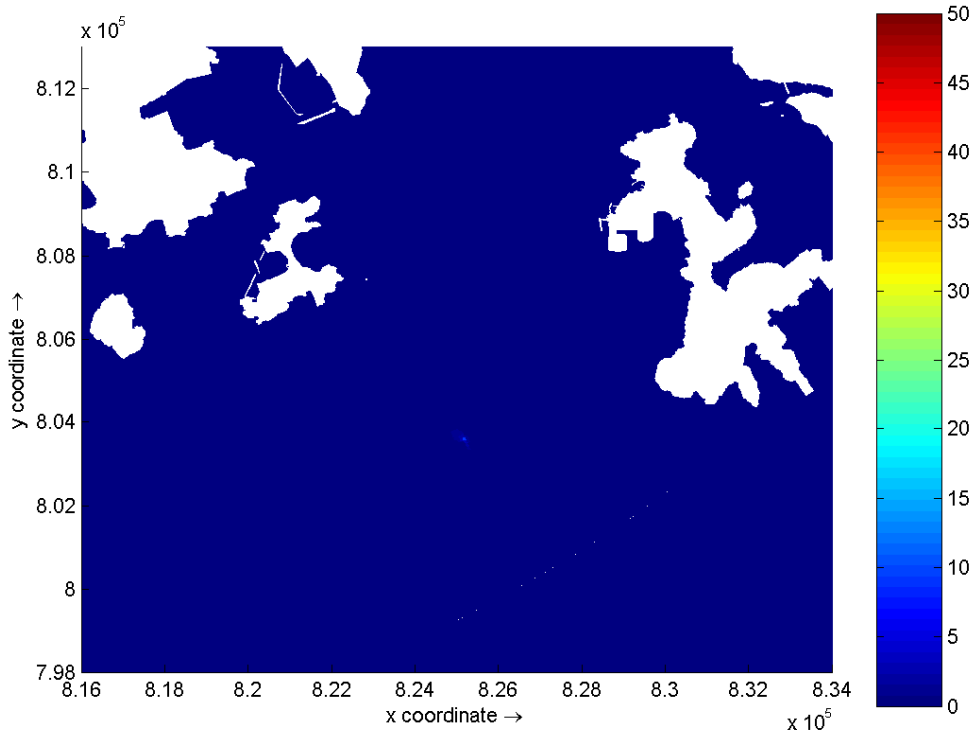




Suspended Solids (mg/L) – maximum depth average elevation on Days 11 and 12 of Foundation Construction at Lamma Island
Dry Season

**Environmental
Resources
Management**

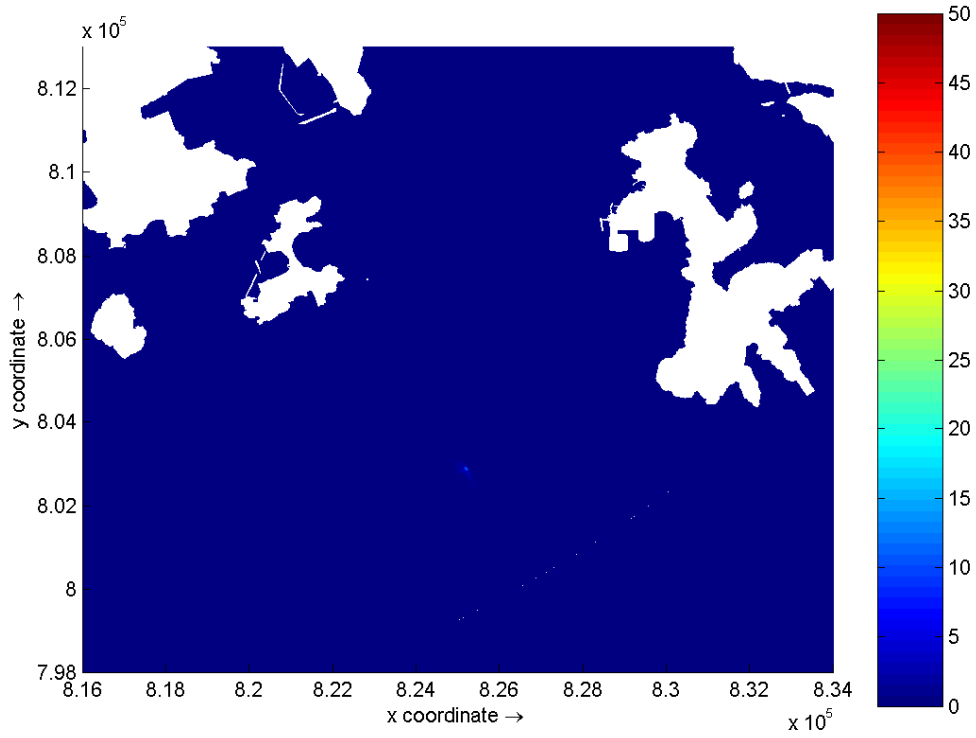




Suspended Solids (mg/L) – maximum depth average elevation on Days 13 and 14
of Foundation Construction at Lamma Island
Dry Season

Environmental
Resources
Management

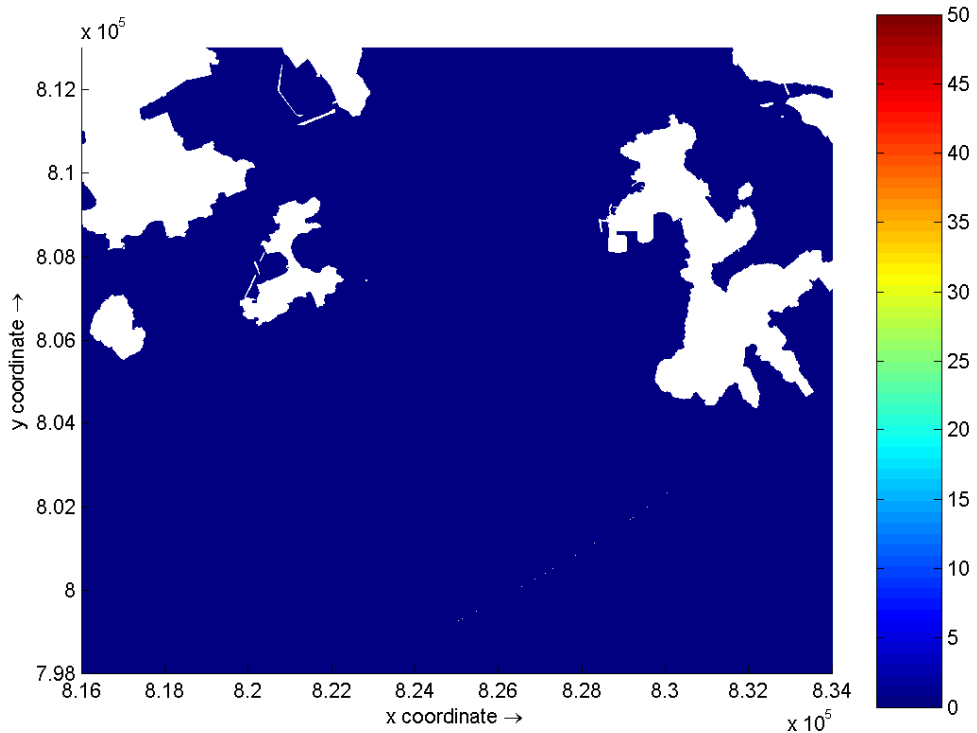
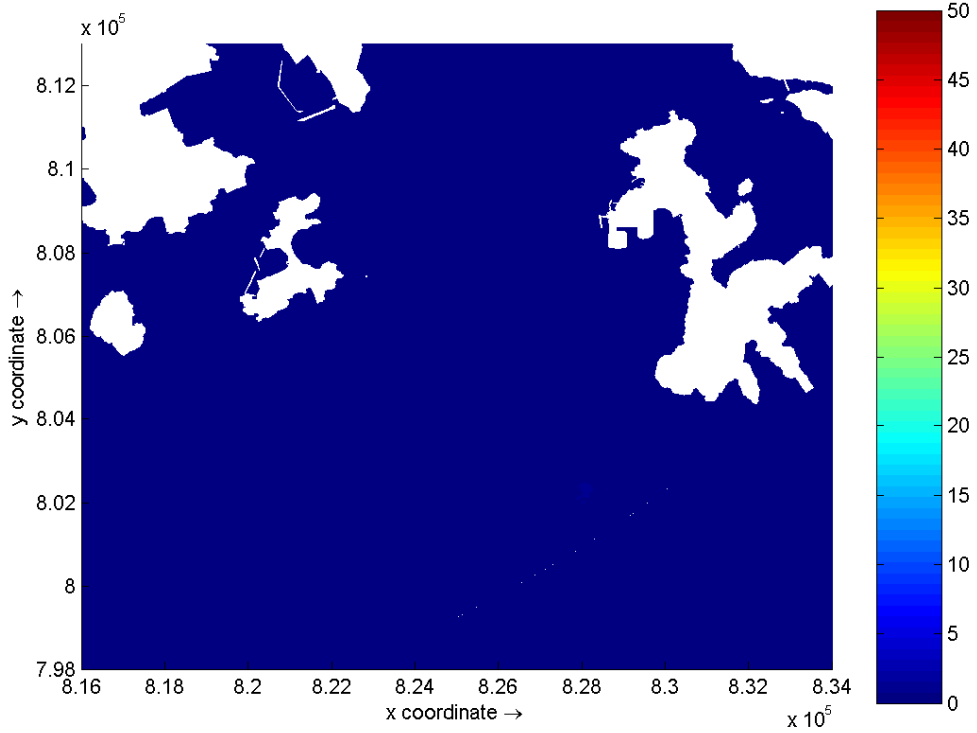




Suspended Solids (mg/L) – maximum depth average elevation on Day 15 of
 Foundation Construction at Lamma Island
 Dry Season

**Environmental
 Resources
 Management**

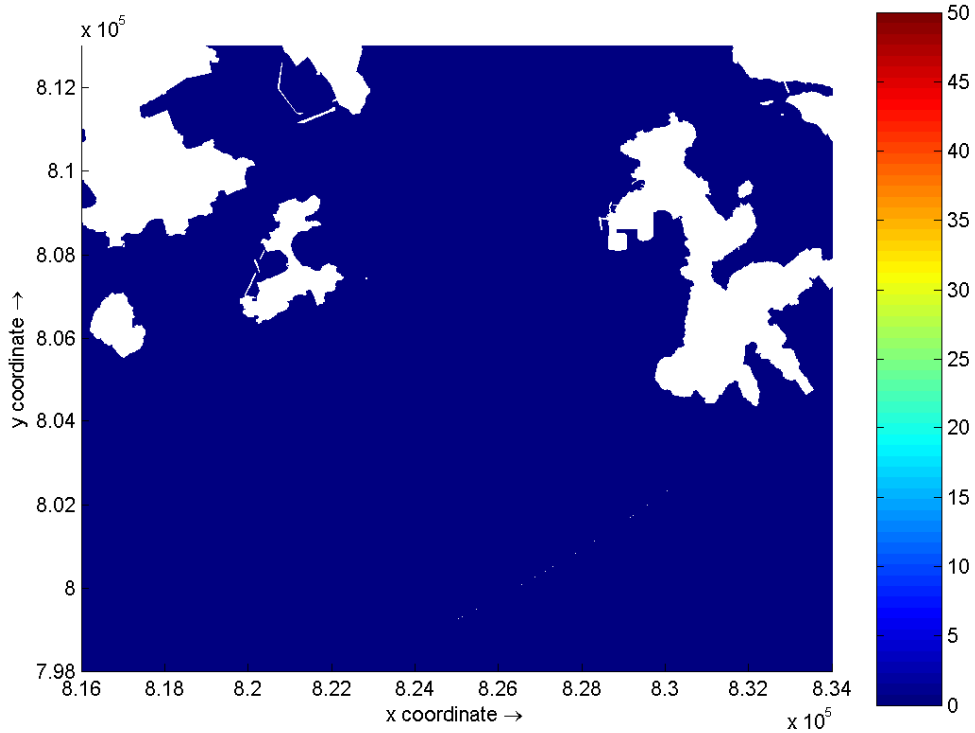
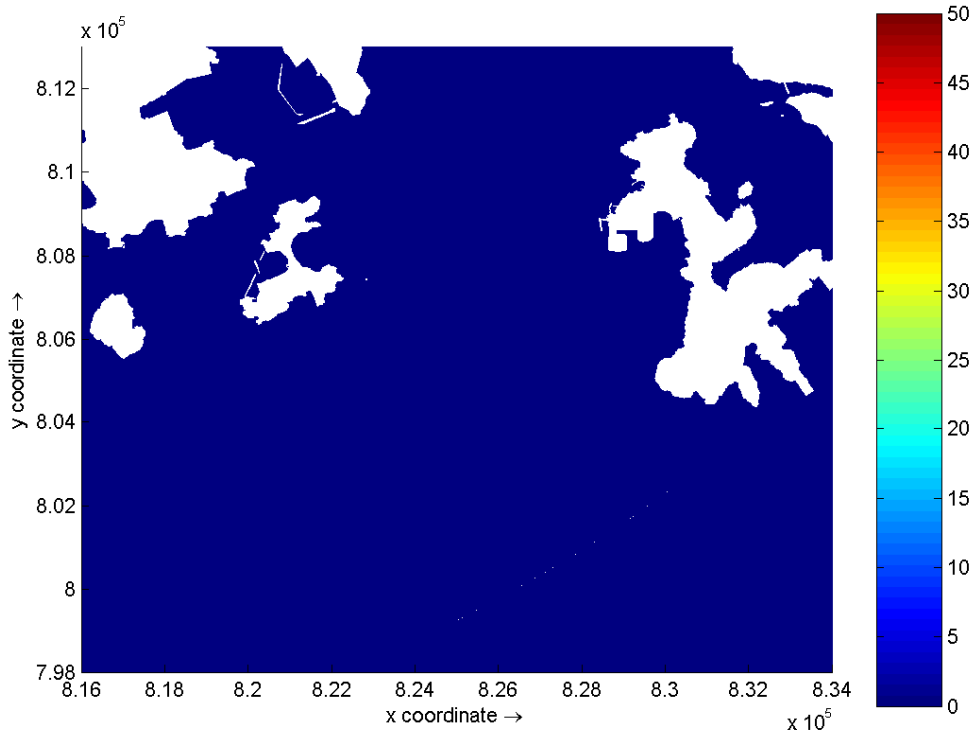




Suspended Solids (mg/L) – maximum depth average elevation on Days 1 and 2 of
 Foundation Construction at Lamma Island
 Wet Season

**Environmental
 Resources
 Management**

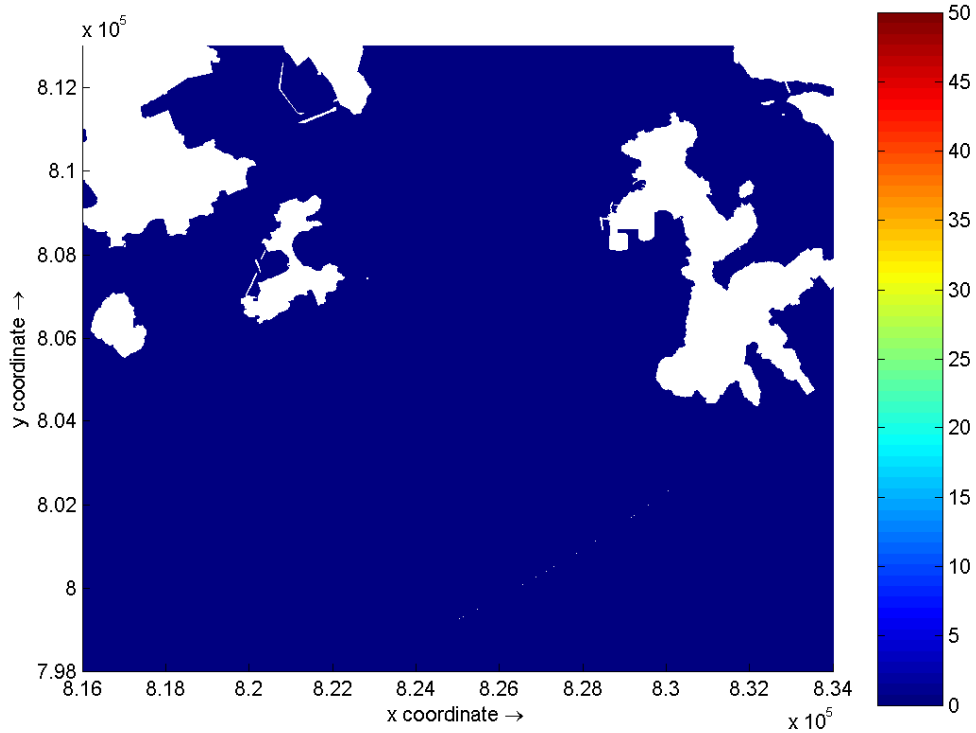
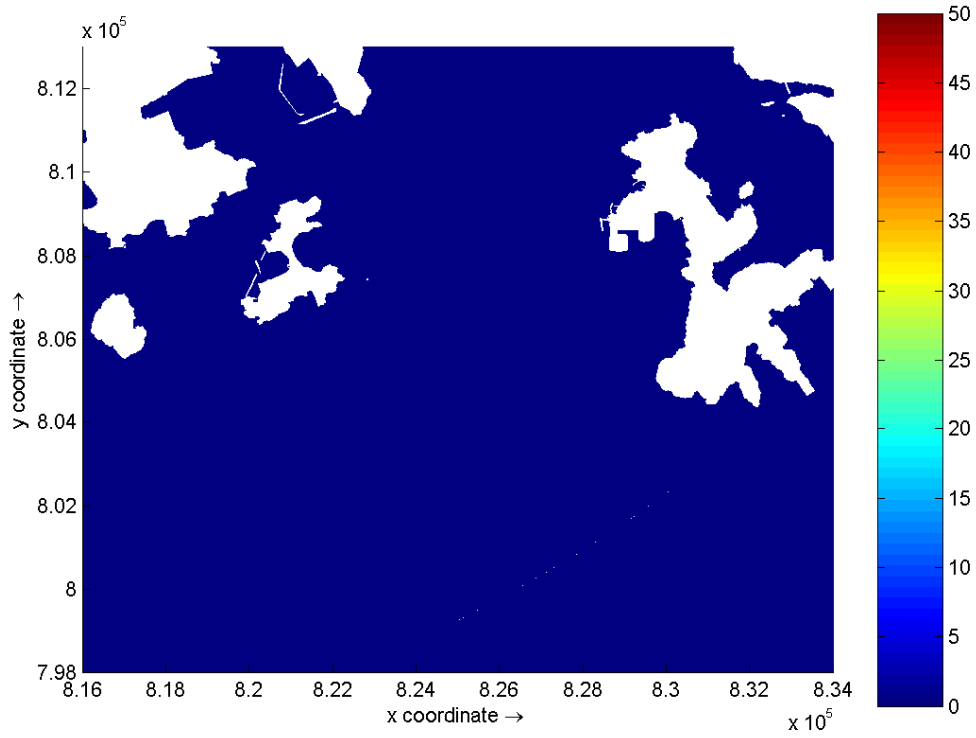




Suspended Solids (mg/L) – maximum depth average elevation on Days 3 and 4 of Foundation Construction at Lamma Island
Wet Season

Environmental
Resources
Management

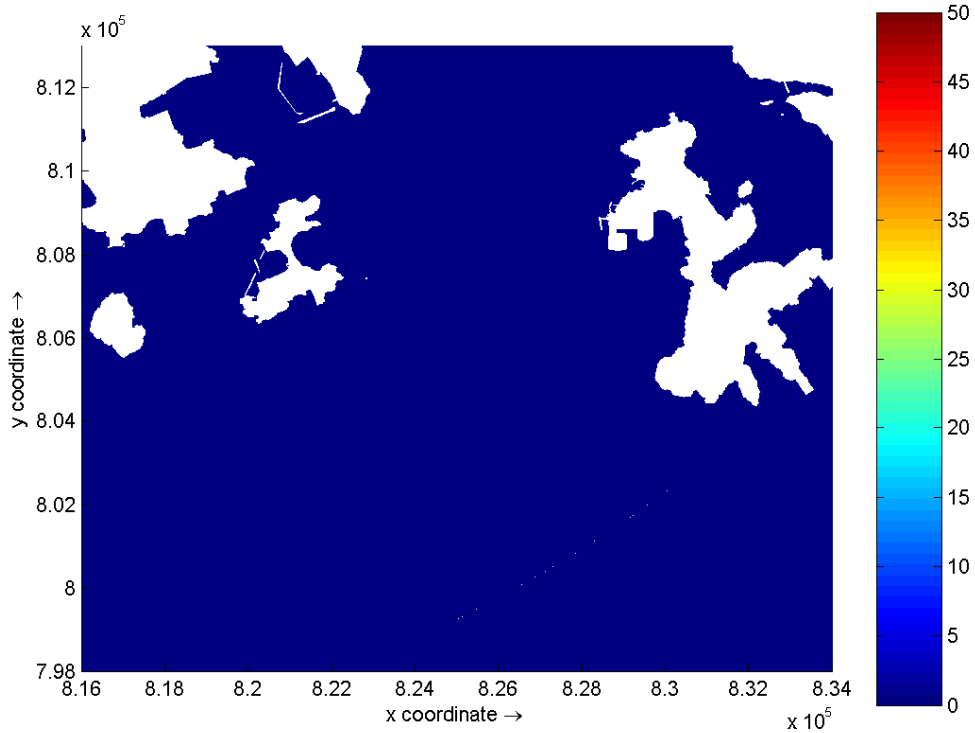
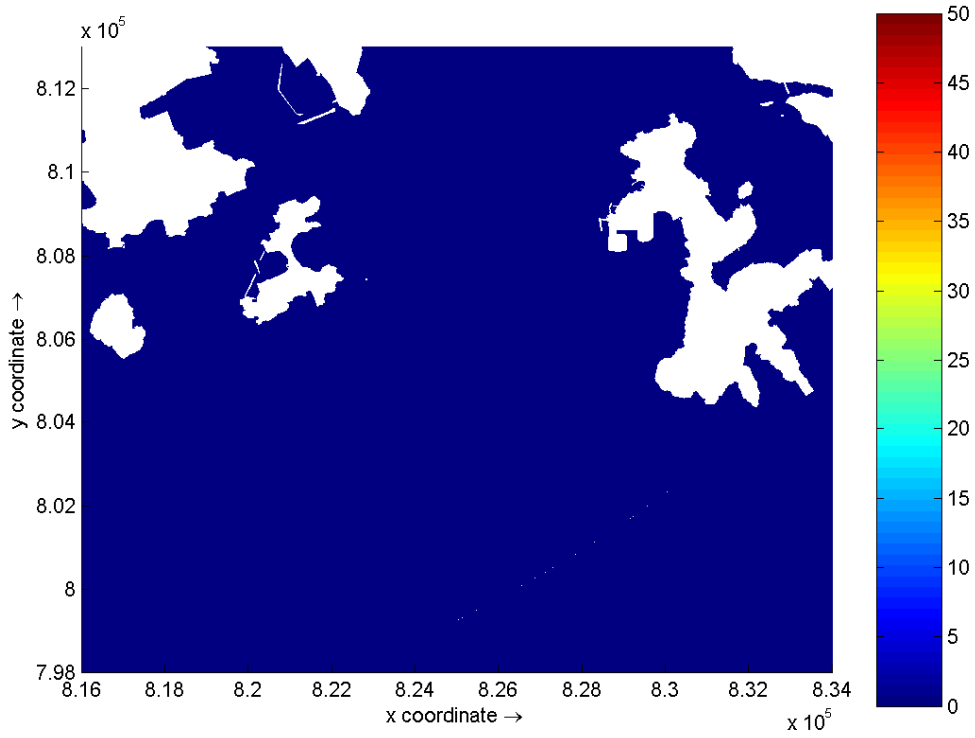




Suspended Solids (mg/L) – maximum depth average elevation on Days 5 and 6 of Foundation Construction at Lamma Island
Wet Season

Environmental
Resources
Management

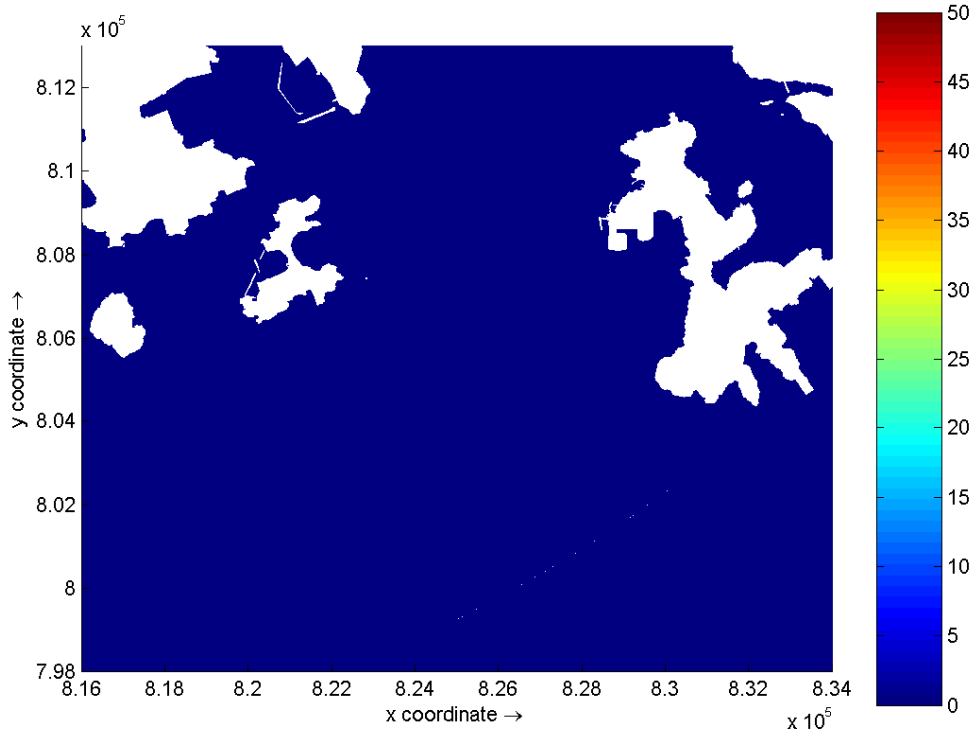
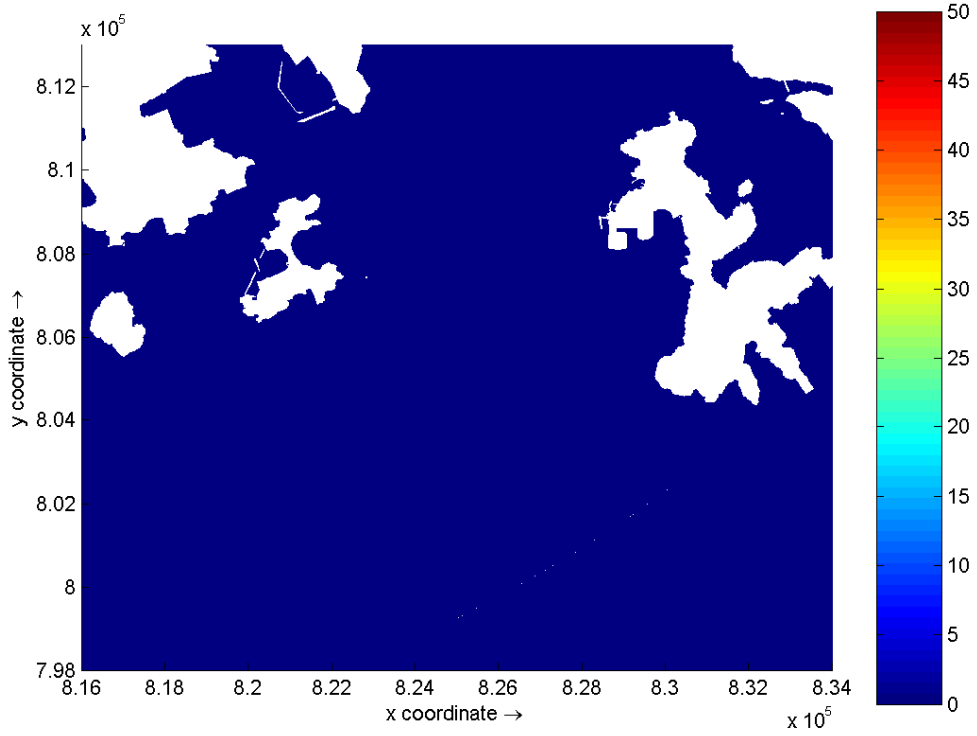




Suspended Solids (mg/L) – maximum depth average elevation on Days 7 and 8 of Foundation Construction at Lamma Island
Wet Season

Environmental
Resources
Management

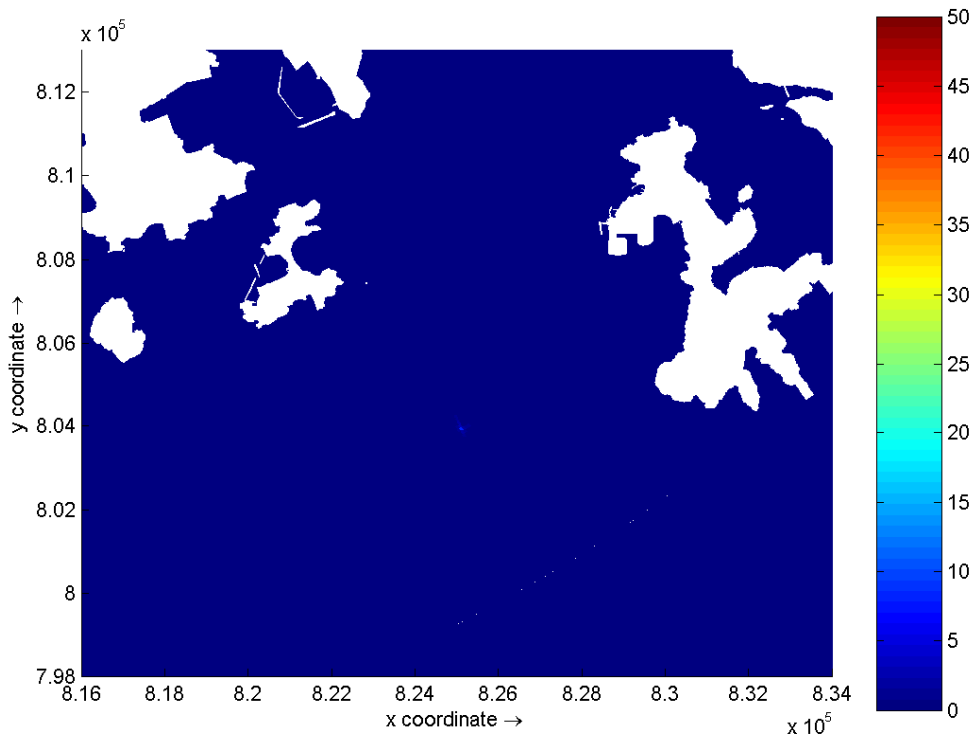
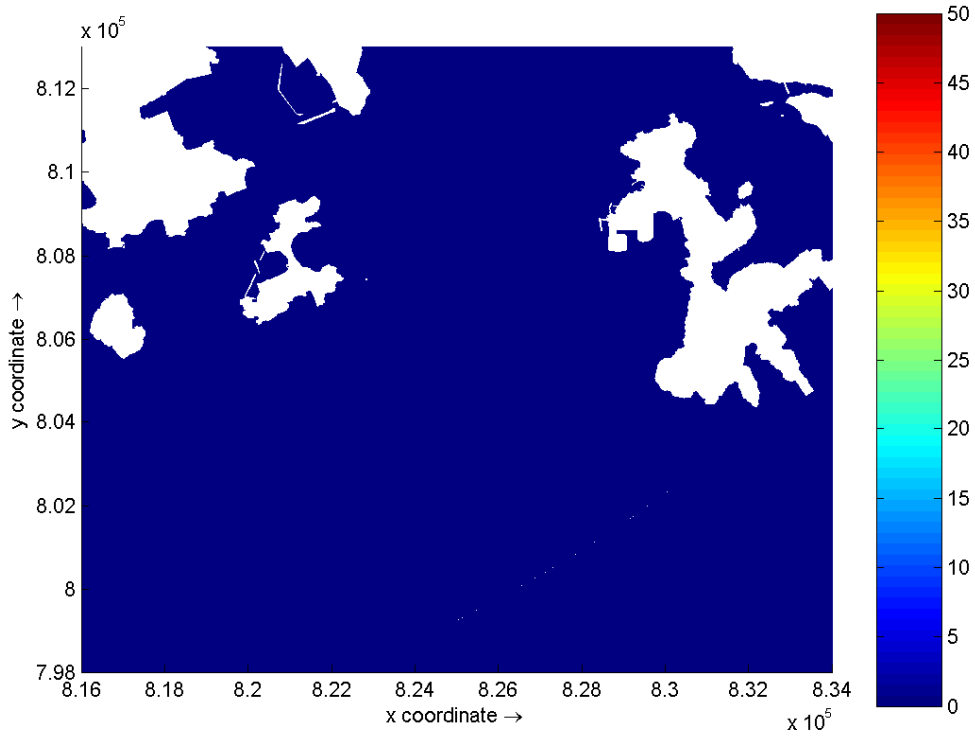




Suspended Solids (mg/L) – maximum depth average elevation on Days 9 and 10 of Foundation Construction at Lamma Island
Wet Season

Environmental
Resources
Management

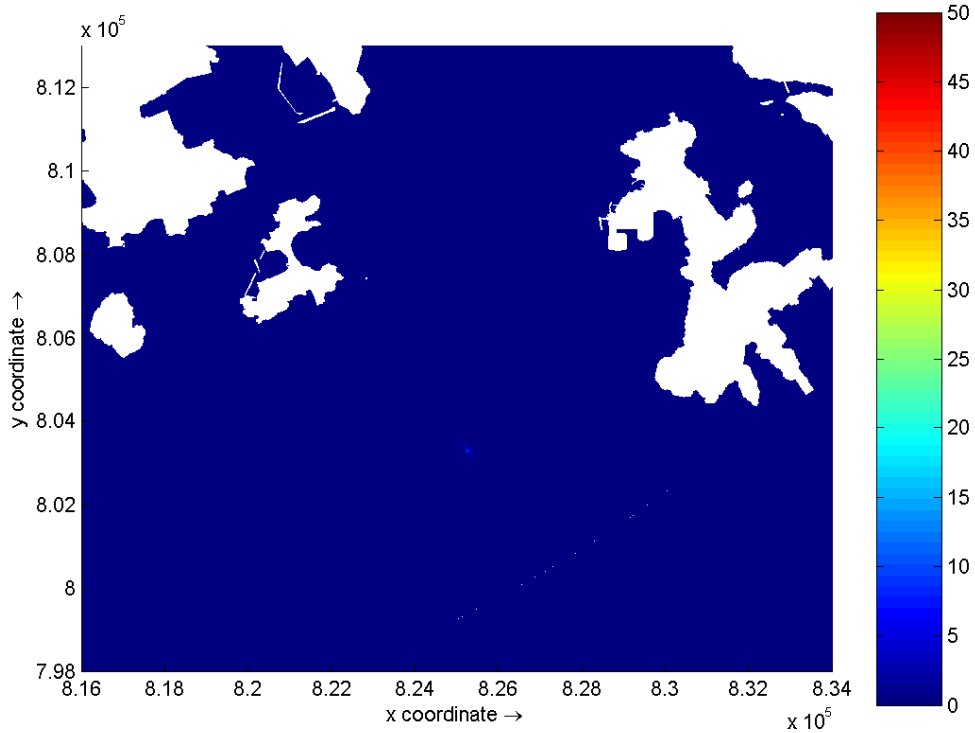
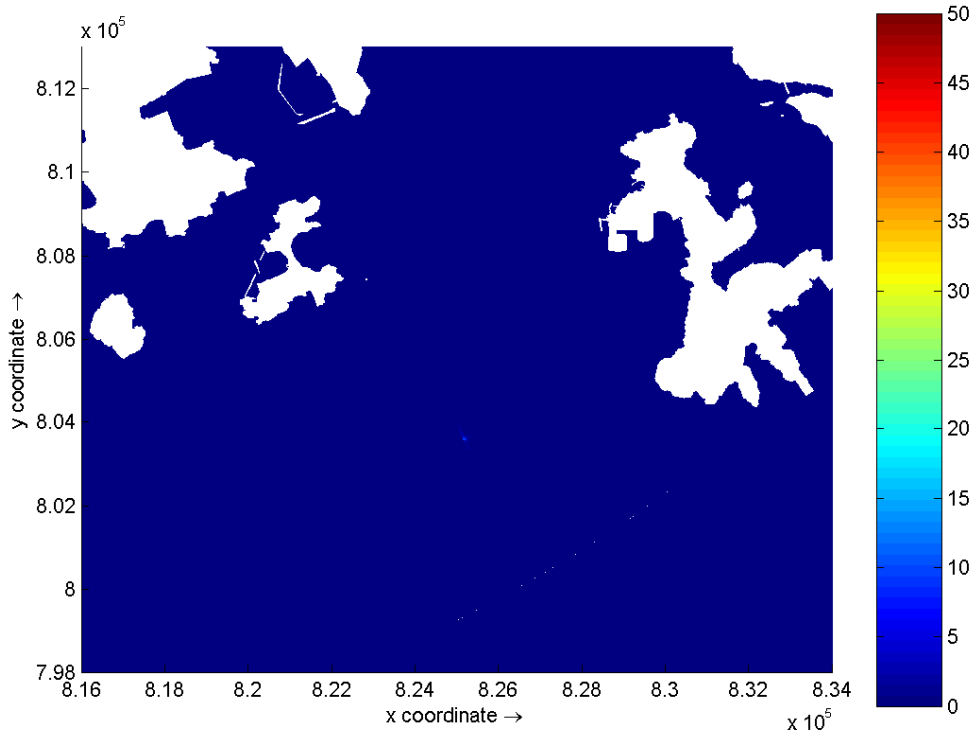




Suspended Solids (mg/L) – maximum depth average elevation on Days 11 and 12 of Foundation Construction at Lamma Island
Wet Season

Environmental
Resources
Management

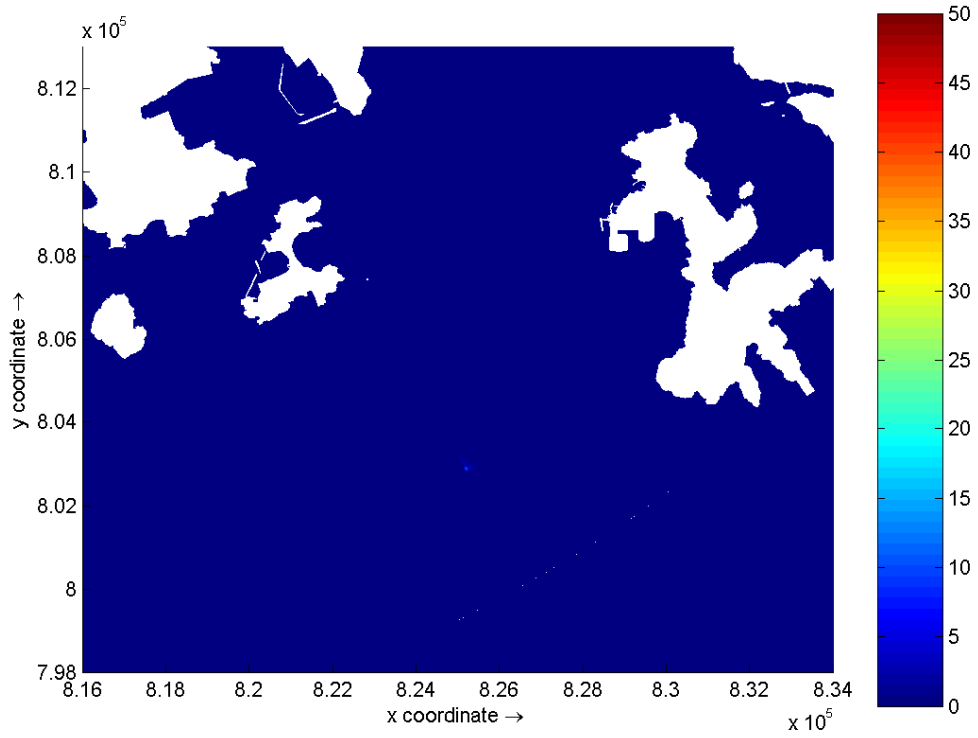




Suspended Solids (mg/L) – maximum depth average elevation on Days 13 and 14 of Foundation Construction at Lamna Island
Wet Season

Environmental
Resources
Management

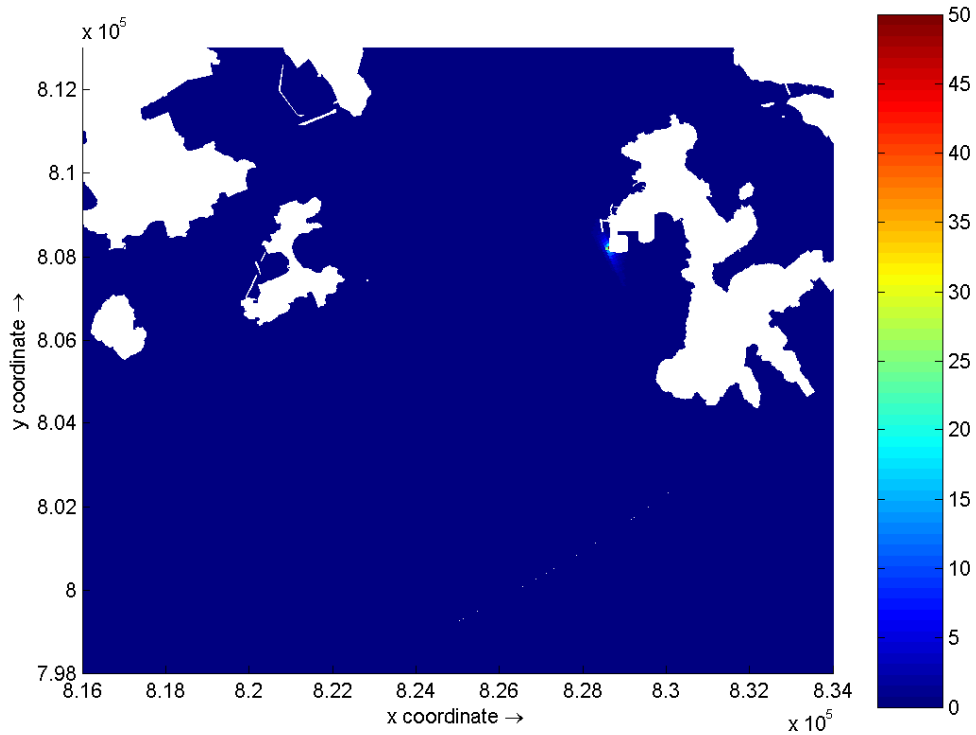
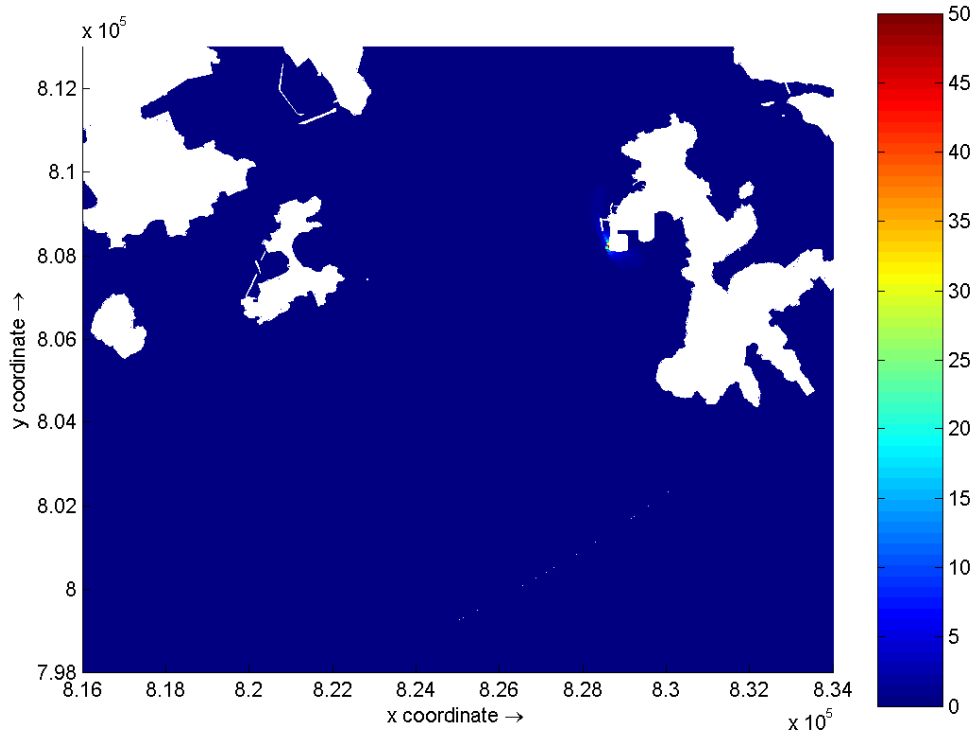




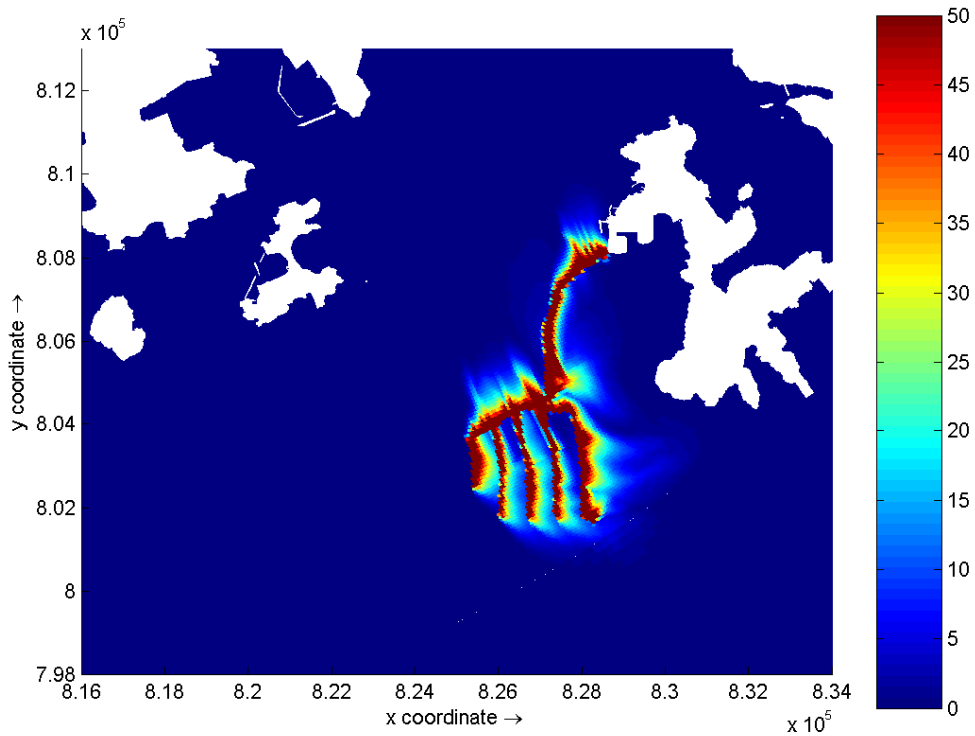
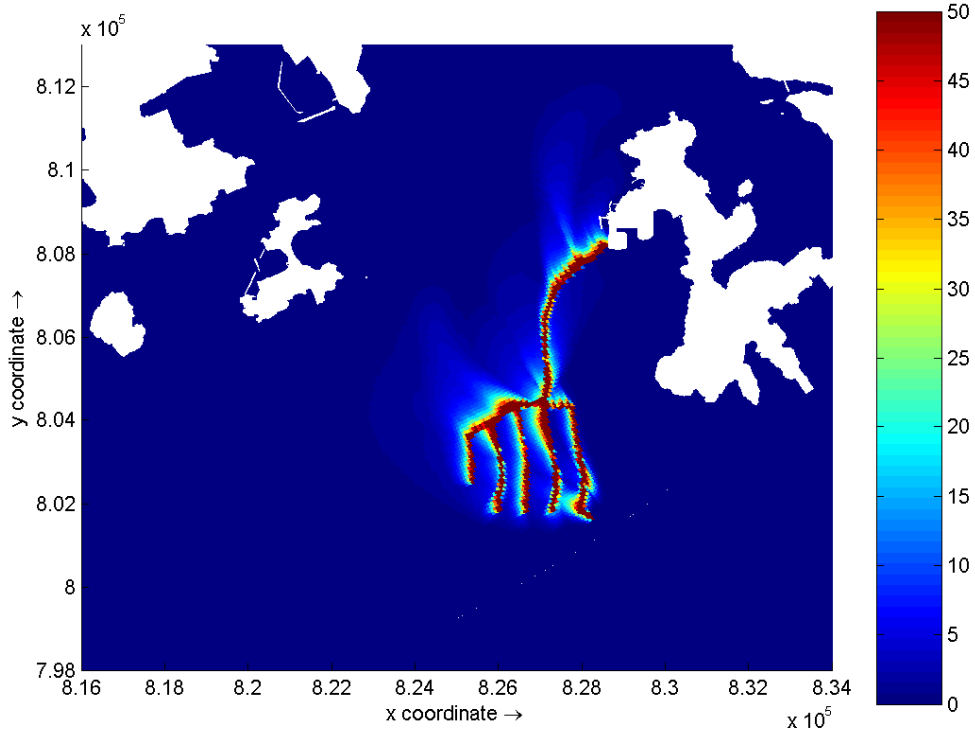
Suspended Solids (mg/L) – maximum depth average elevation on Day 15 of
 Foundation Construction at Lamma Island
 Wet Season

**Environmental
 Resources
 Management**

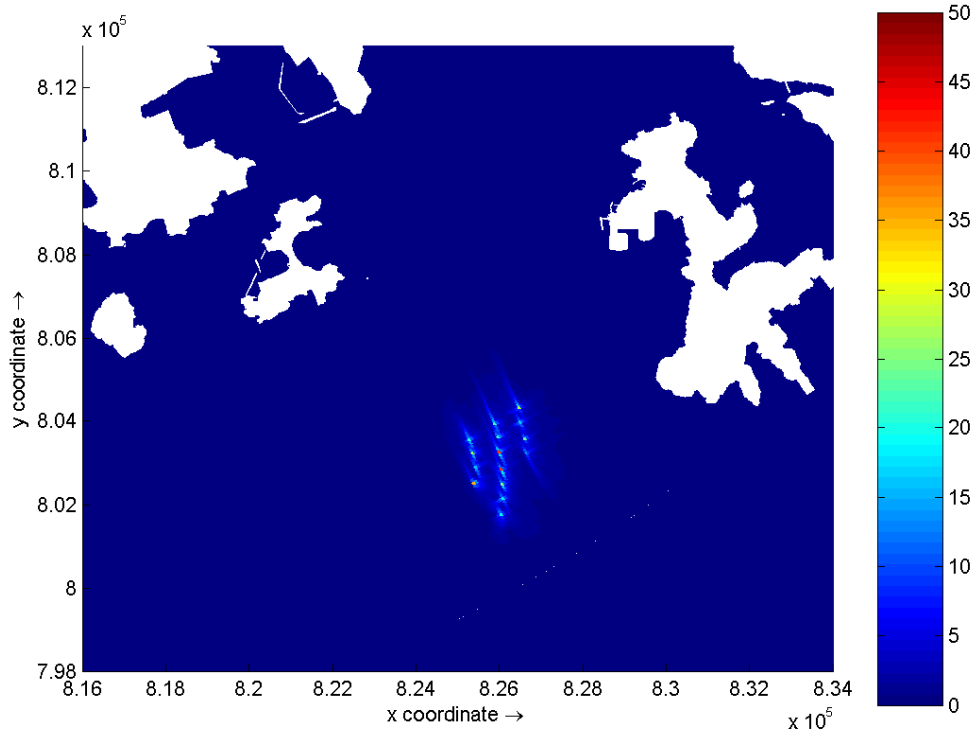
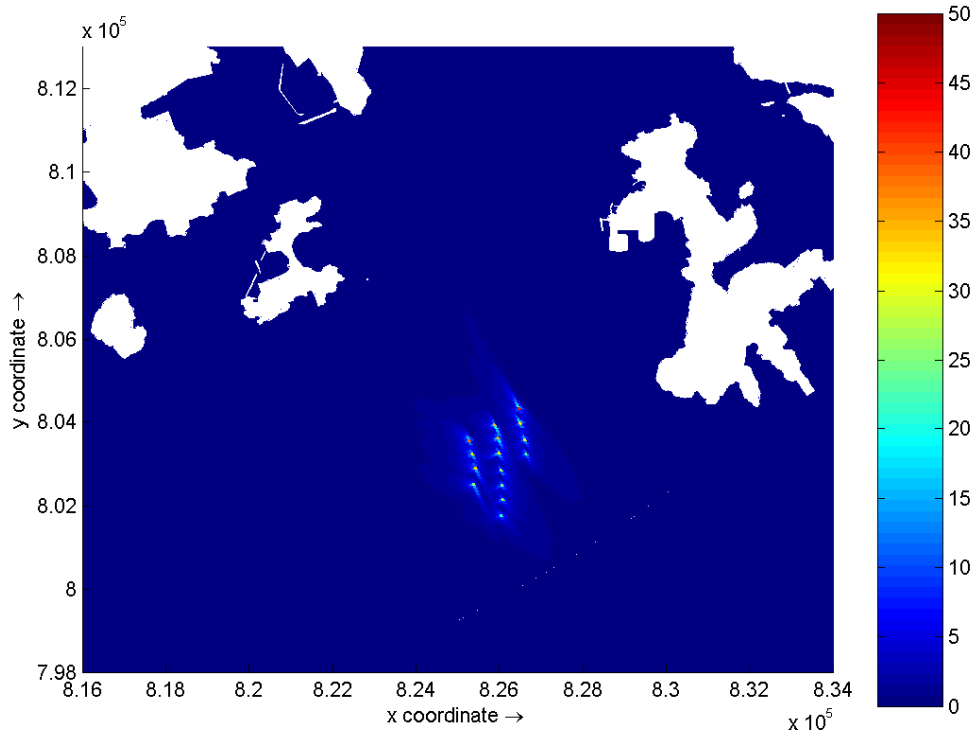




Suspended Solids (mg/L) – maximum depth average elevation during the dry (top) and wet (bottom) during Grab Dredging at Lamma Island over a full spring-neap tidal cycle



Suspended Solids (mg/L) – maximum depth average elevation during the dry (top) and wet (bottom) during Jetting at Lamma Island over a full spring-neap tidal cycle



Suspended Solids (mg/L) – maximum depth average elevation during the dry (top) and wet (bottom) during Foundation Construction at Lamma Island over a full spring-neap tidal cycle