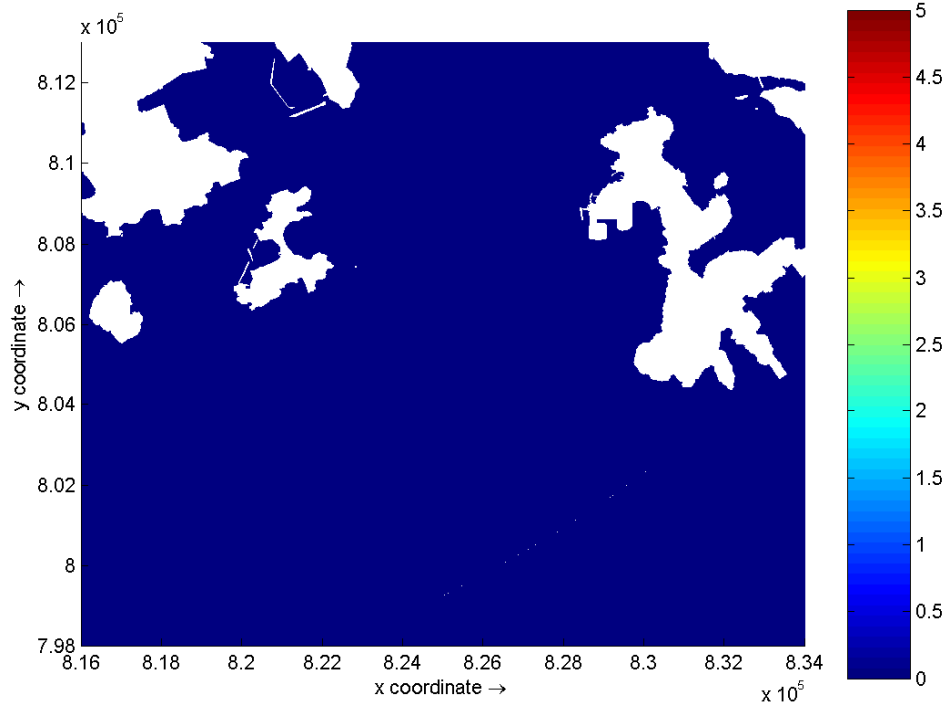
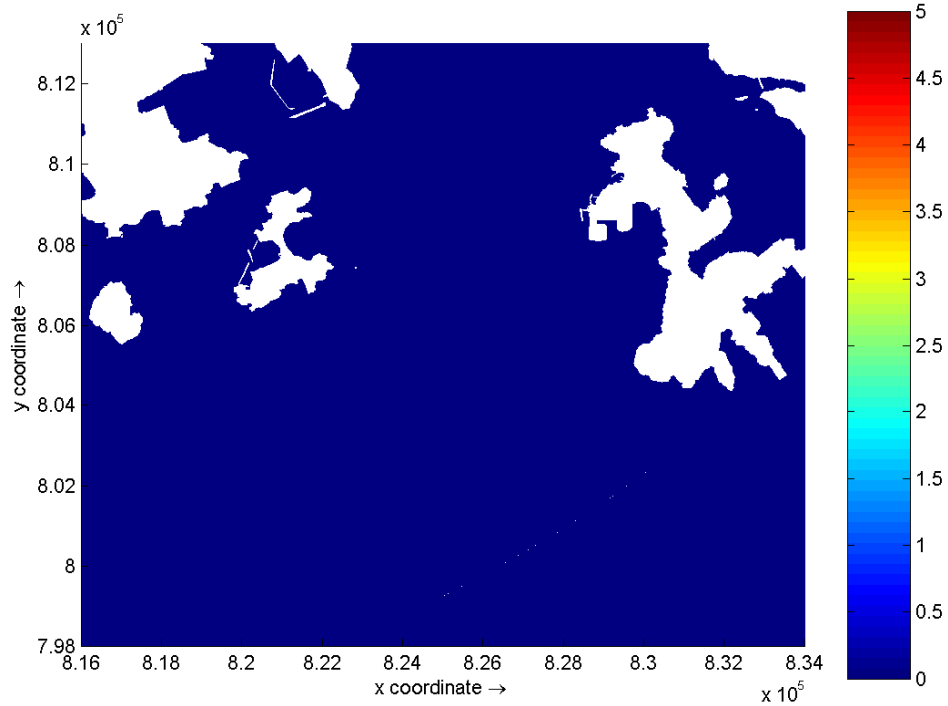


Dissolved Oxygen (mg/L) – maximum depth average depletion on Days 1 (top) and 2 (bottom) of Grab Dredging at Lamma Island Dry Season

Environmental
Resources
Management

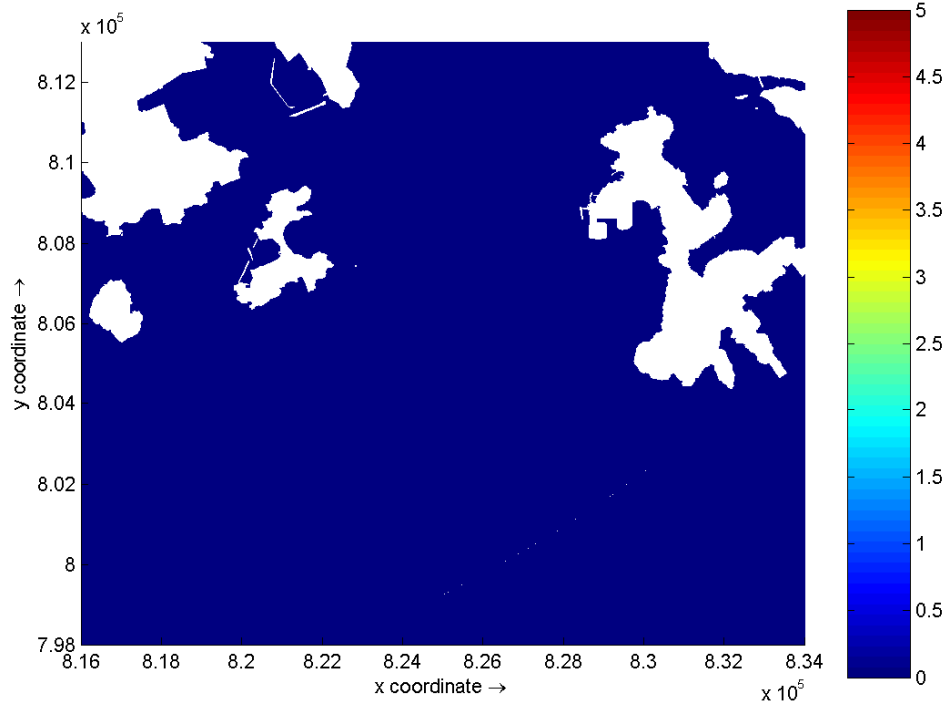
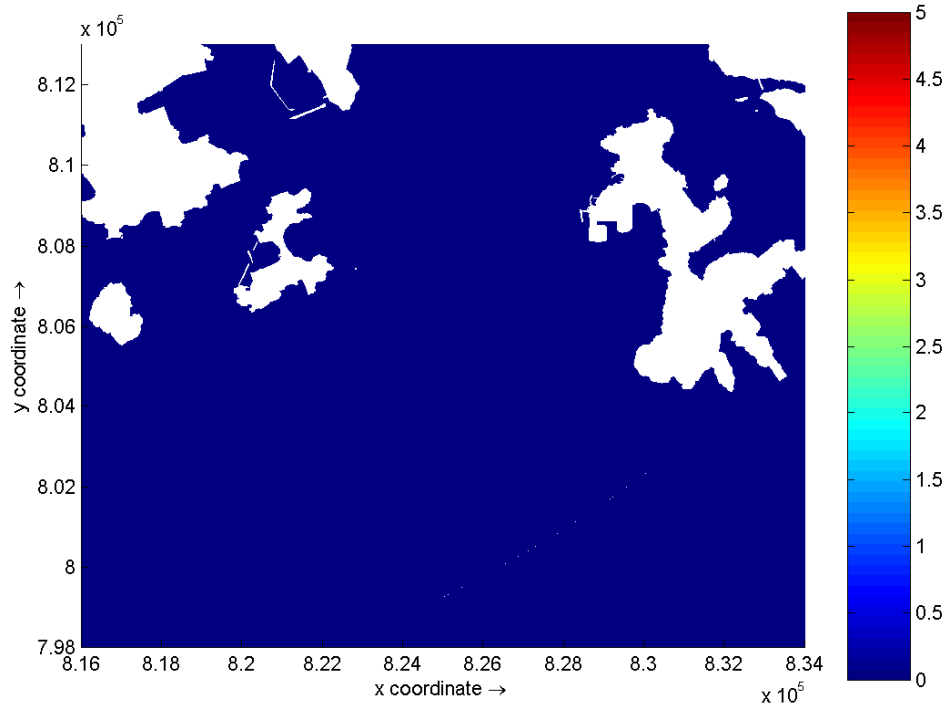




Dissolved Oxygen (mg/L) – maximum depth average depletion on Days 3 (top) and 4 (bottom) of Grab Dredging at Lamma Island Dry Season

Environmental
Resources
Management

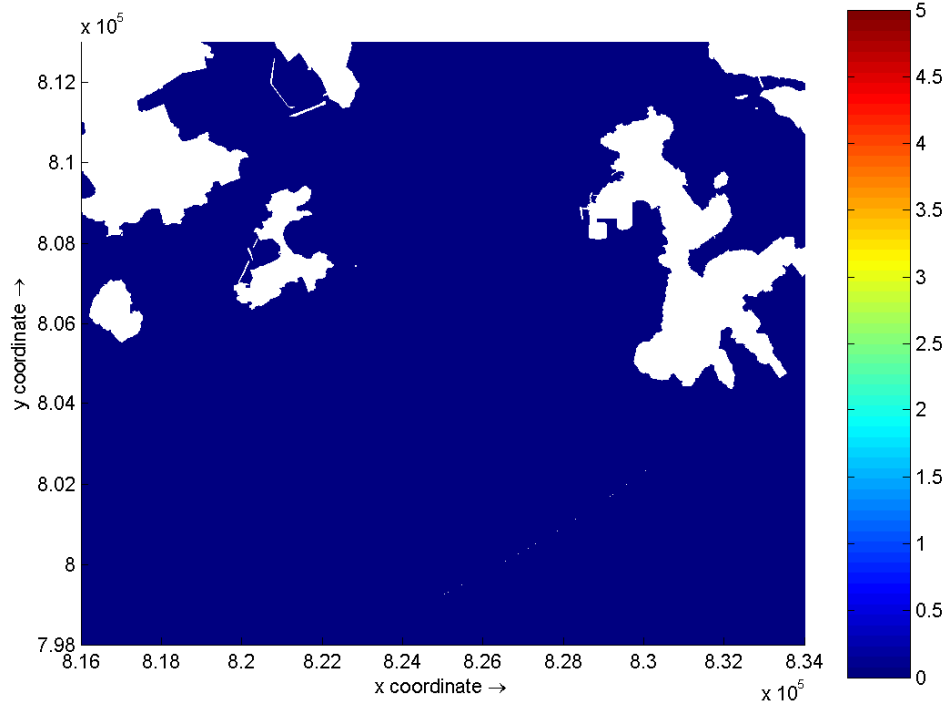
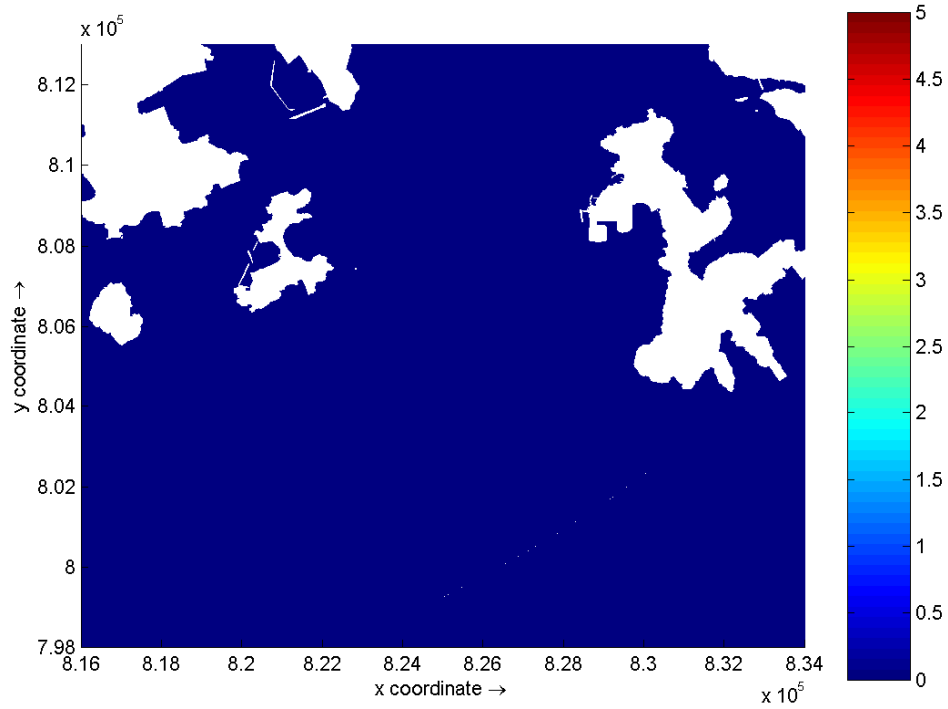




Dissolved Oxygen (mg/L) – maximum depth average depletion on Days 5 (top) and 6 (bottom) of Grab Dredging at Lamma Island Dry Season

Environmental
Resources
Management

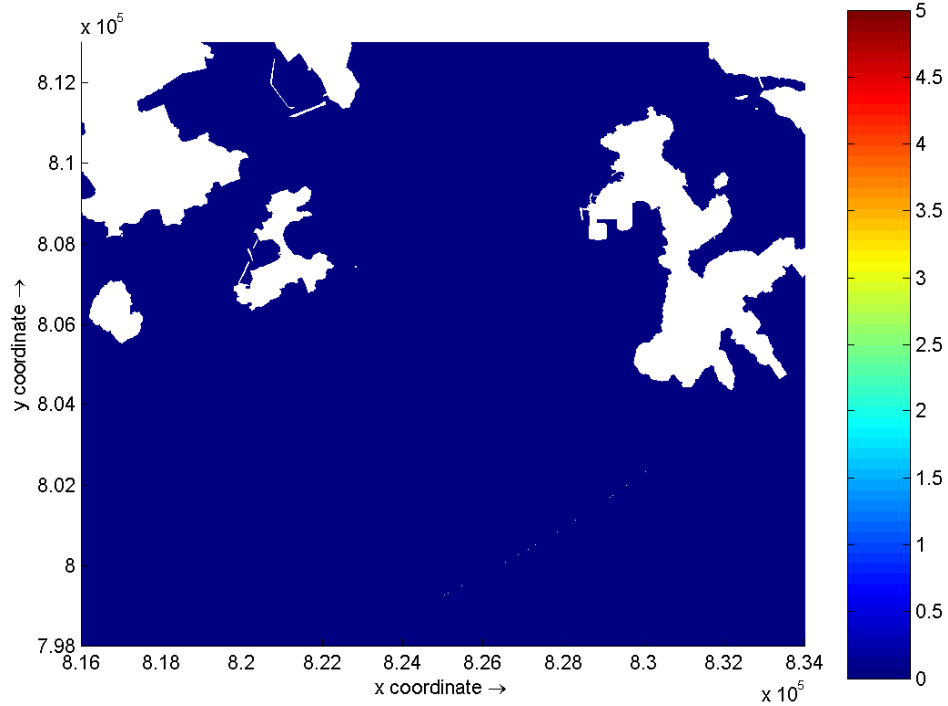
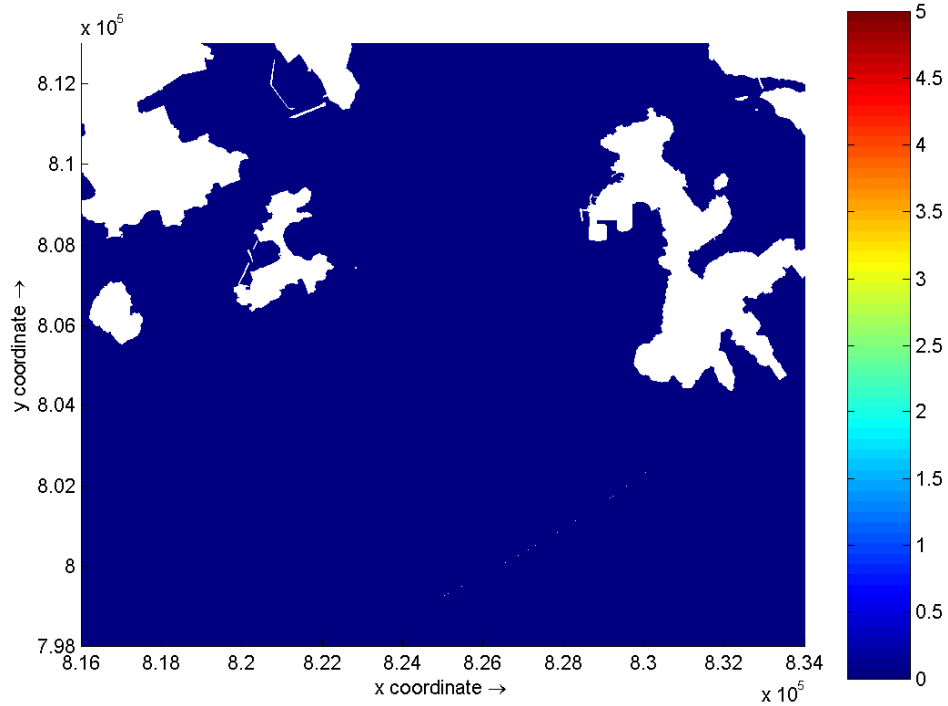




Dissolved Oxygen (mg/L) – maximum depth average depletion on Days 7 (top) and 8 (bottom) of Grab Dredging at Lamma Island Dry Season

Environmental
Resources
Management

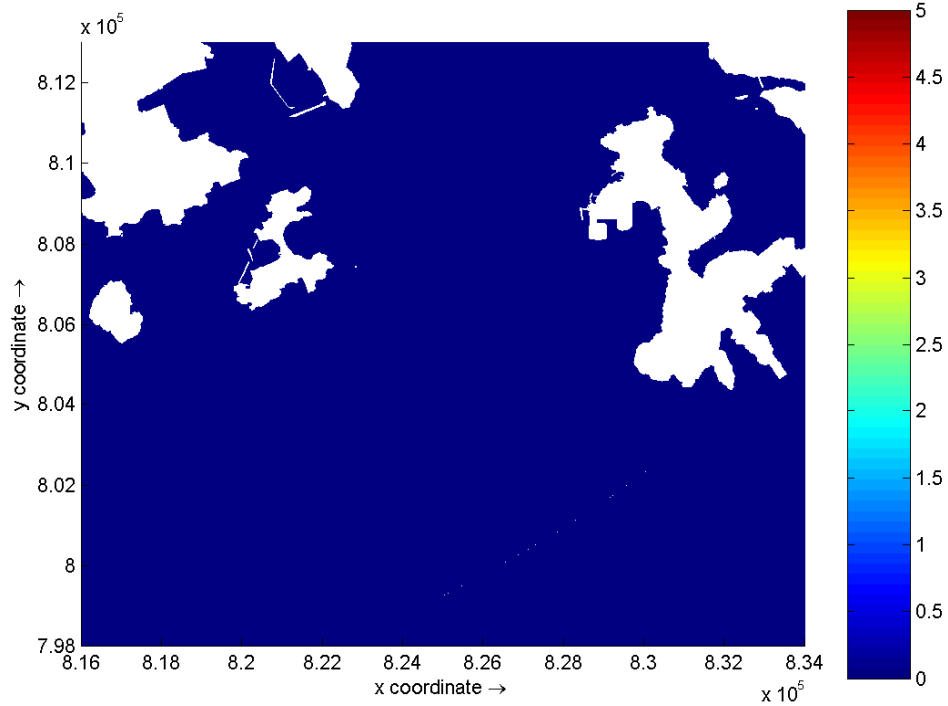
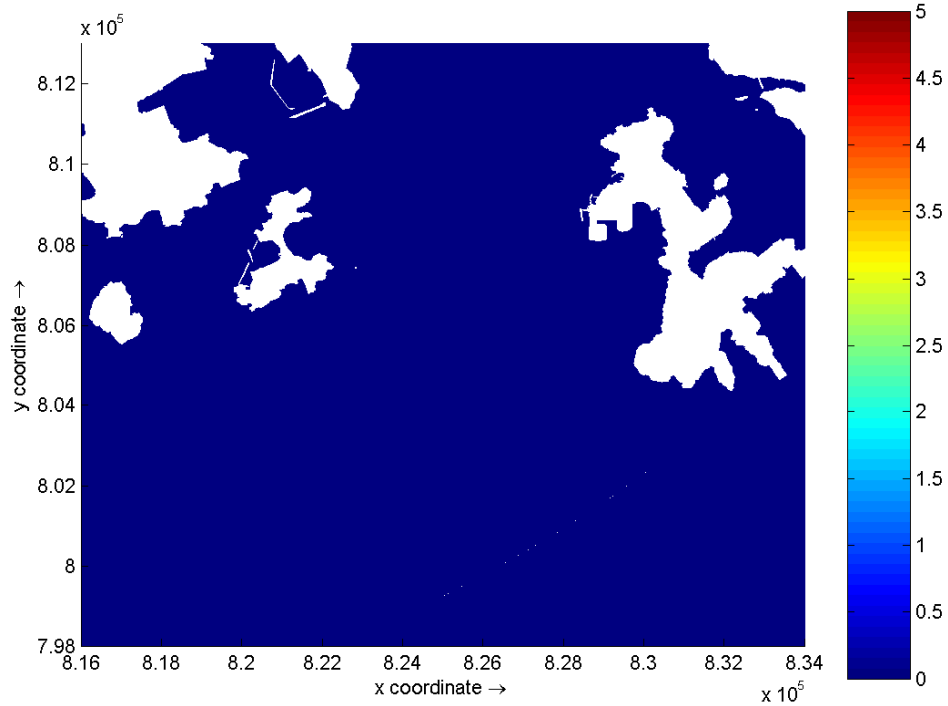




Dissolved Oxygen (mg/L) – maximum depth average depletion on Days 9 (top) and 10 (bottom) of Grab Dredging at Lamma Island Dry Season

Environmental
Resources
Management

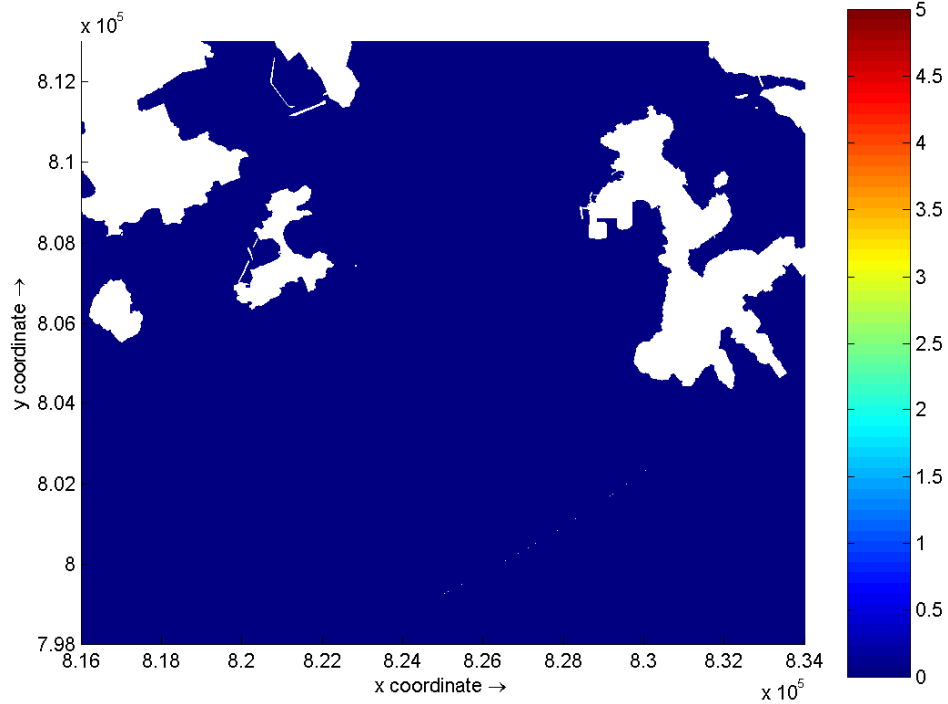
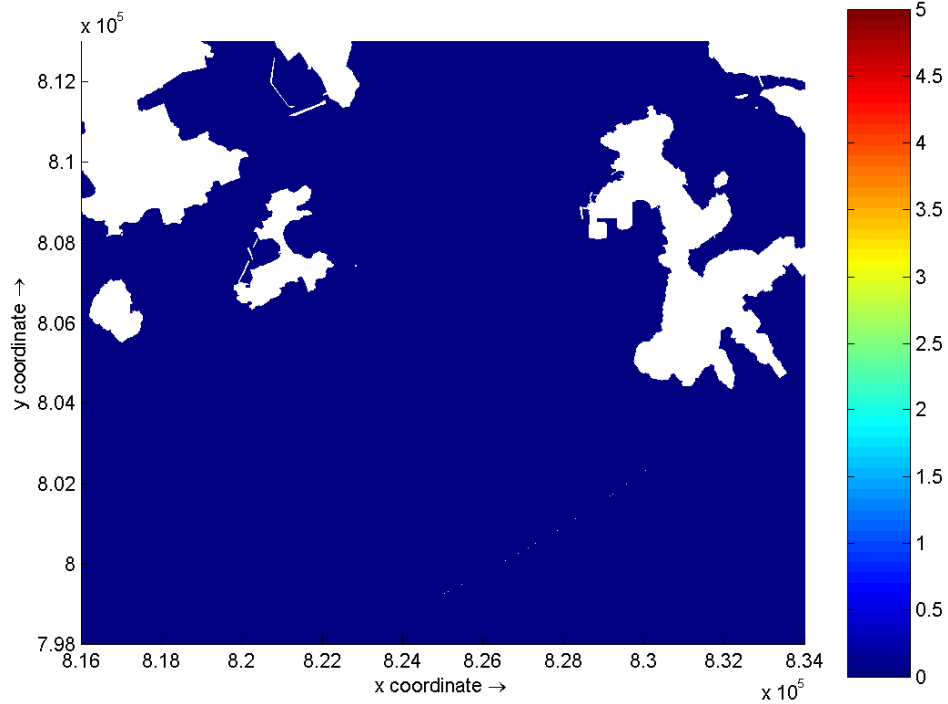




Dissolved Oxygen (mg/L) – maximum depth average depletion on Days 11 (top) and 12 (bottom) of Grab Dredging at Lamma Island Dry Season

Environmental
Resources
Management

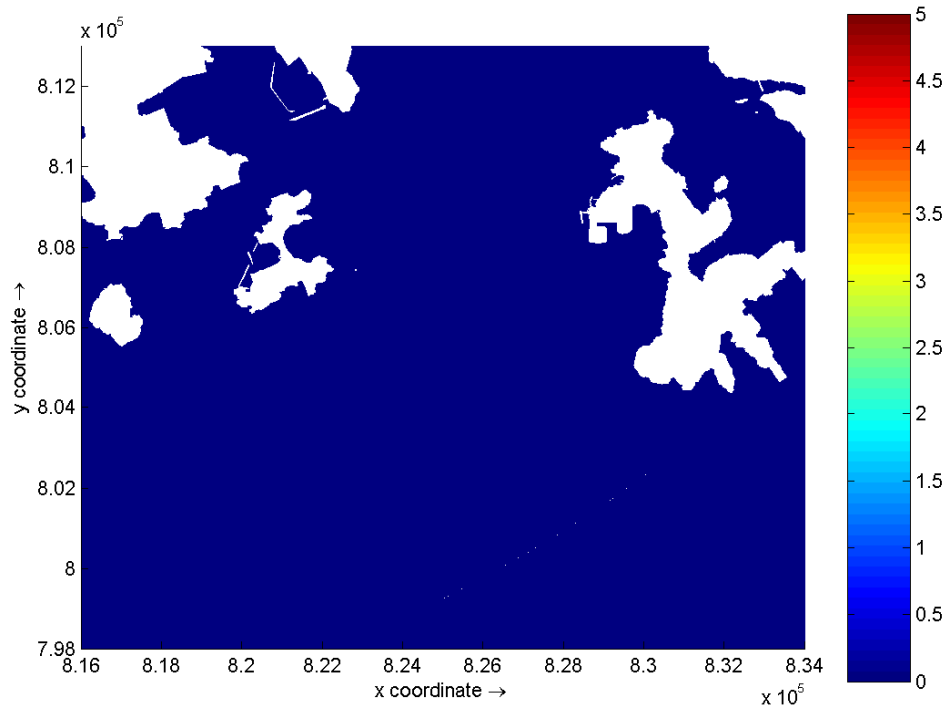




Dissolved Oxygen (mg/L) – maximum depth average depletion on Days 13 (top) and 14 (bottom) of Grab Dredging at Lamma Island Dry Season

Environmental
Resources
Management

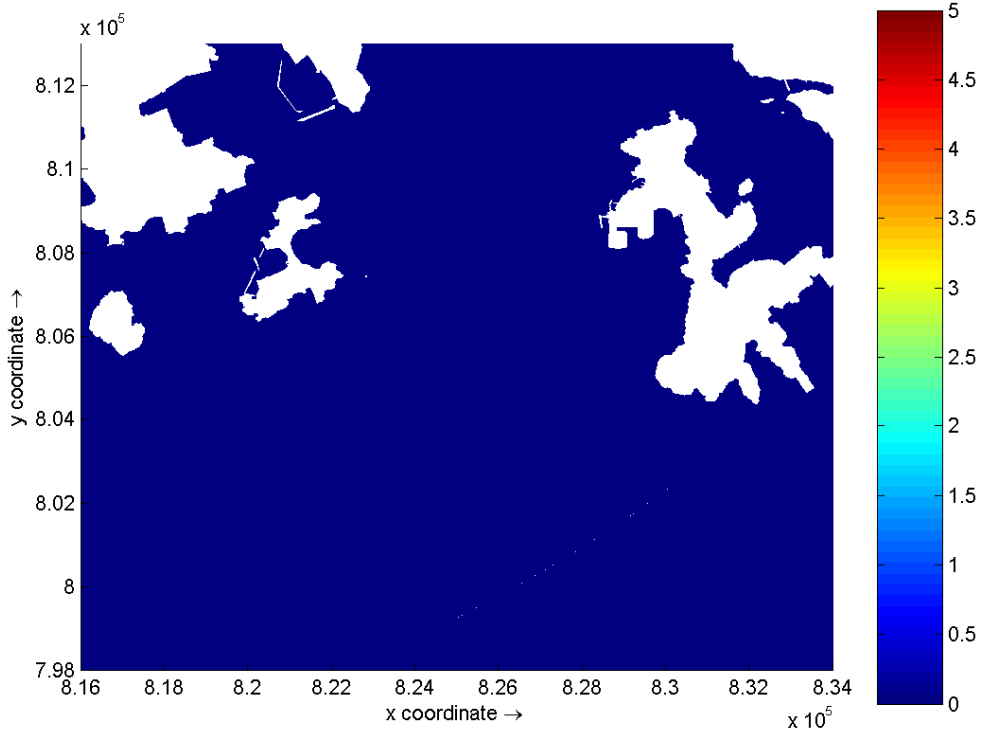
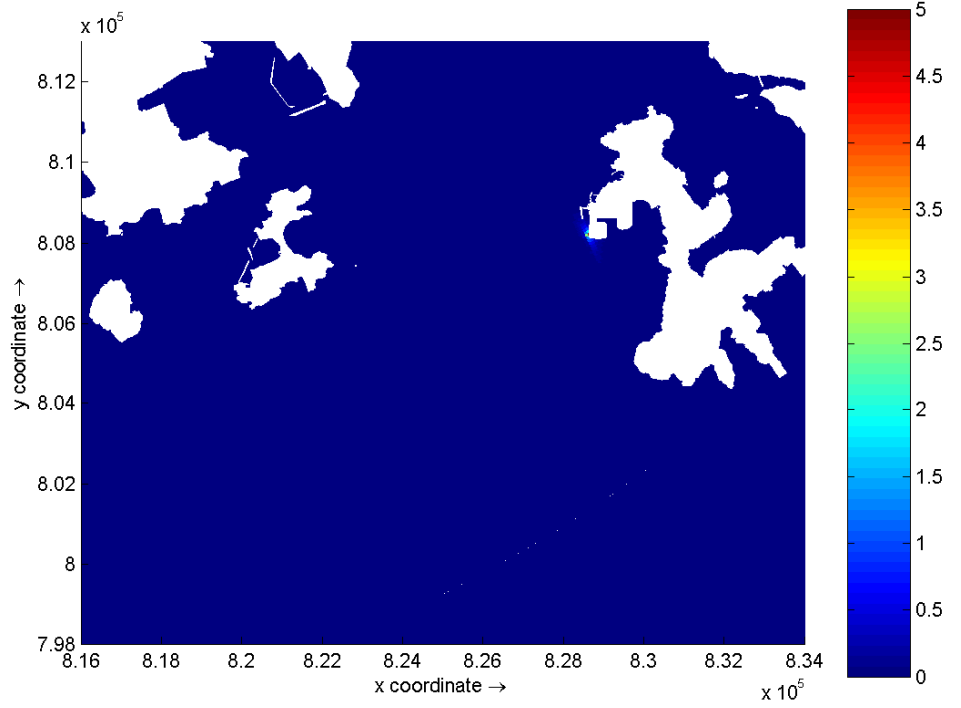




Dissolved Oxygen (mg/L) – maximum depth average depletion on Day 15 of Grab
 Dredging at Lamma Island
 Dry Season

**Environmental
 Resources
 Management**

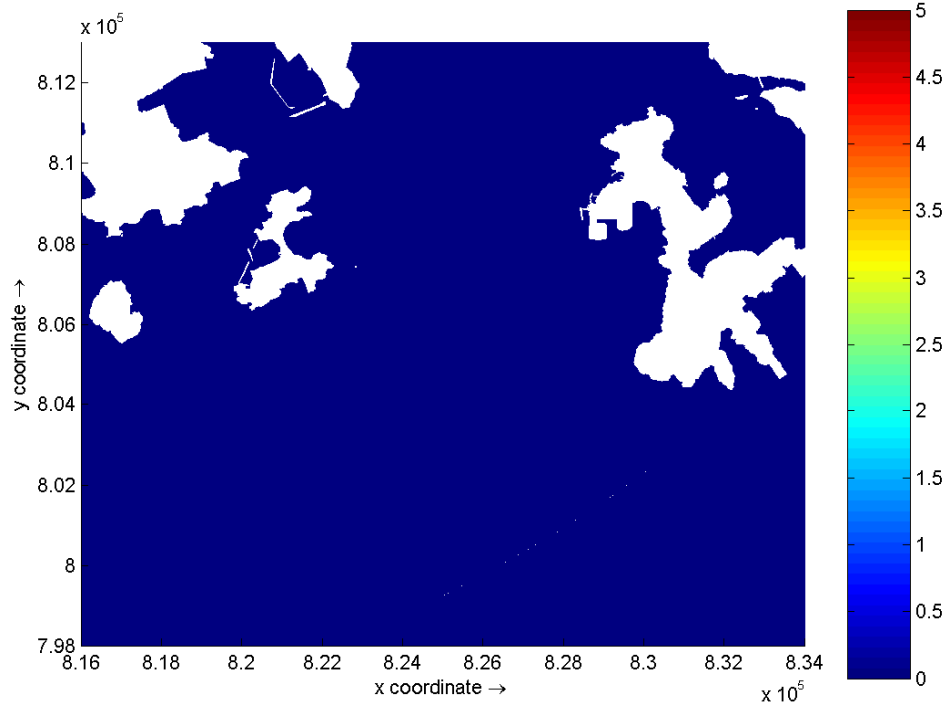
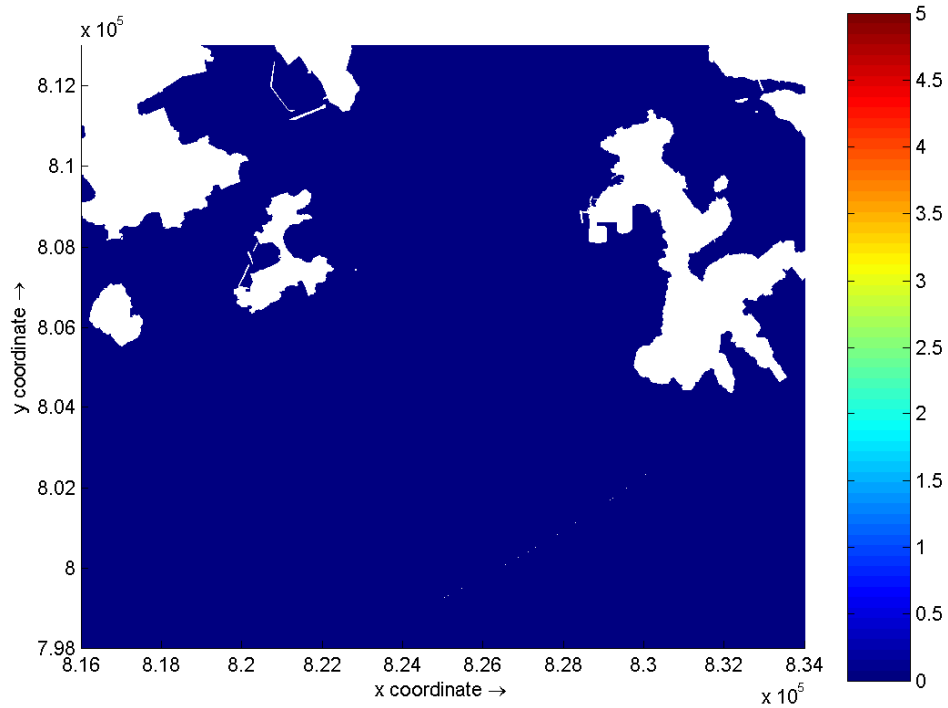




Dissolved Oxygen (mg/L) – maximum depth average depletion on Days 1 (top) and 2 (bottom) of Grab Dredging at Lamma Island Wet Season

Environmental
Resources
Management

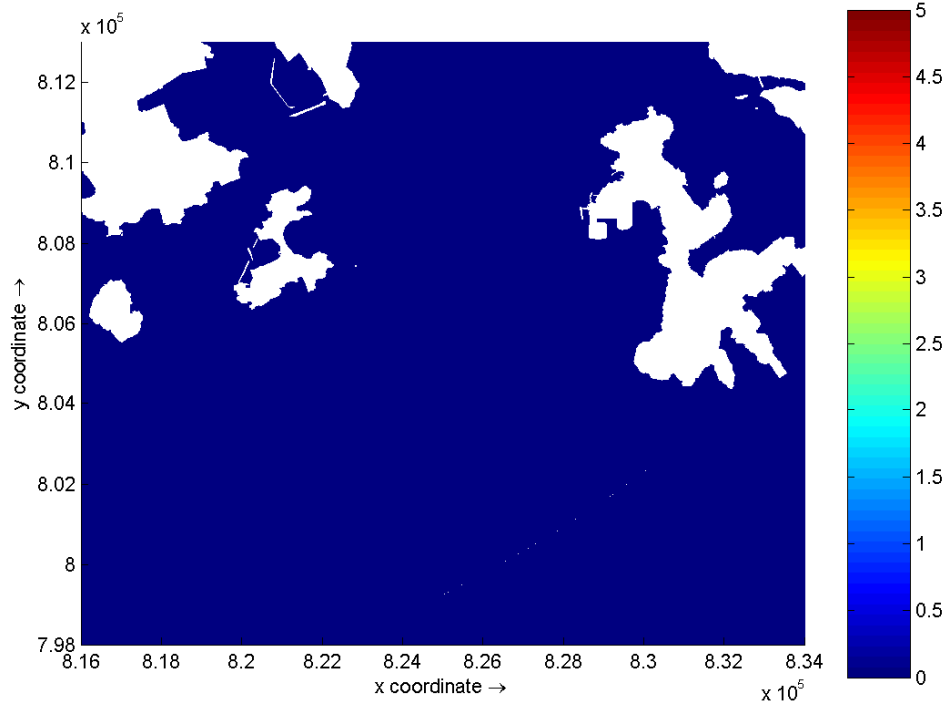
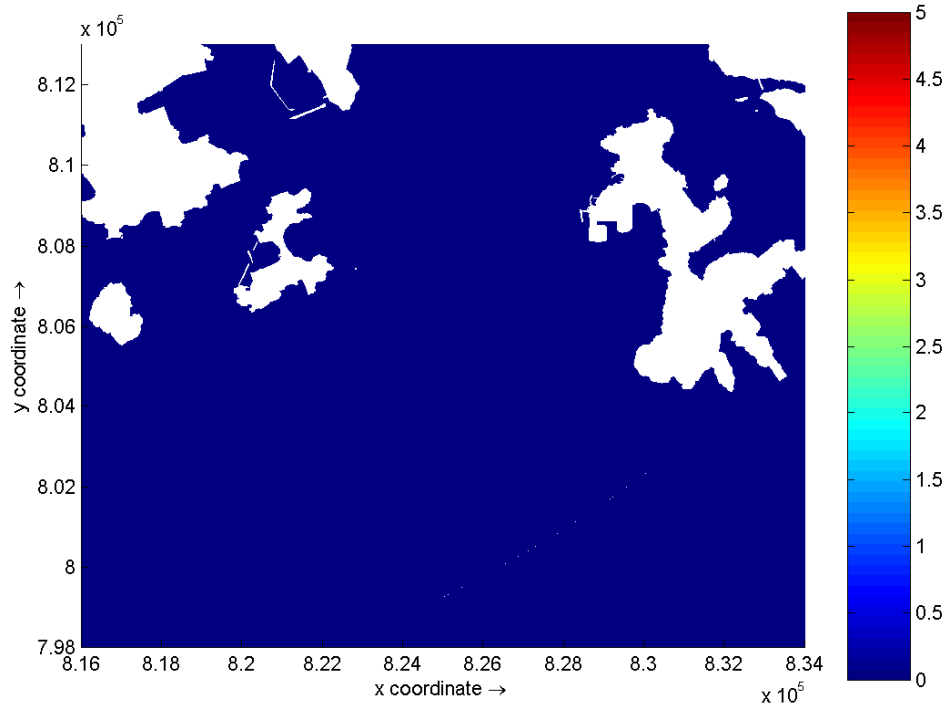




Dissolved Oxygen (mg/L) – maximum depth average depletion on Days 3 (top) and 4 (bottom) of Grab Dredging at Lamma Island Wet Season

Environmental
Resources
Management

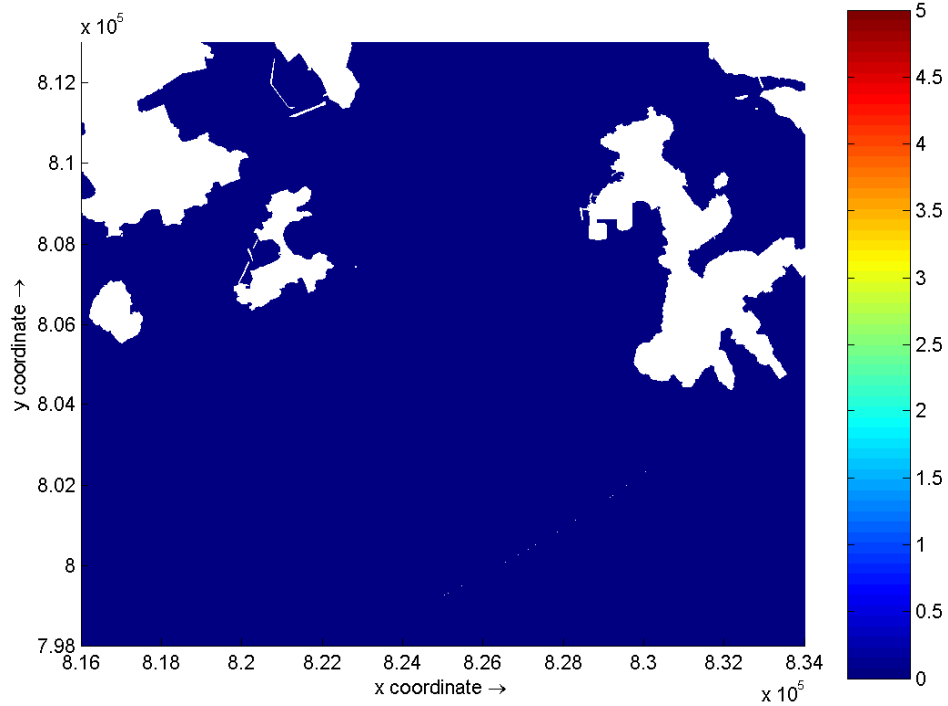
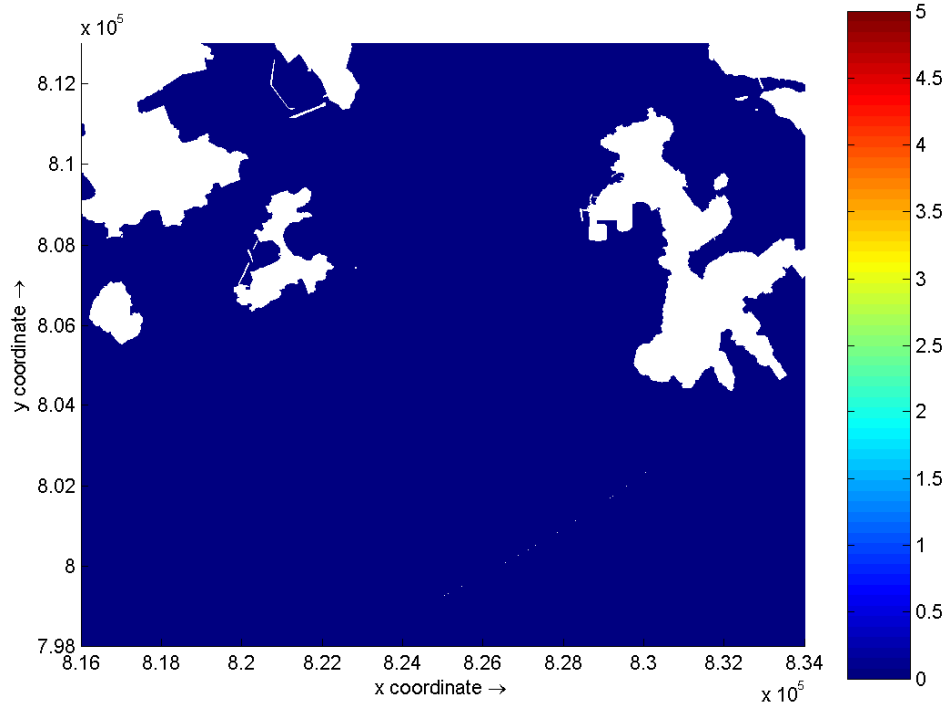




Dissolved Oxygen (mg/L) – maximum depth average depletion on Days 5 (top) and 6 (bottom) of Grab Dredging at Lamma Island Wet Season

Environmental
Resources
Management

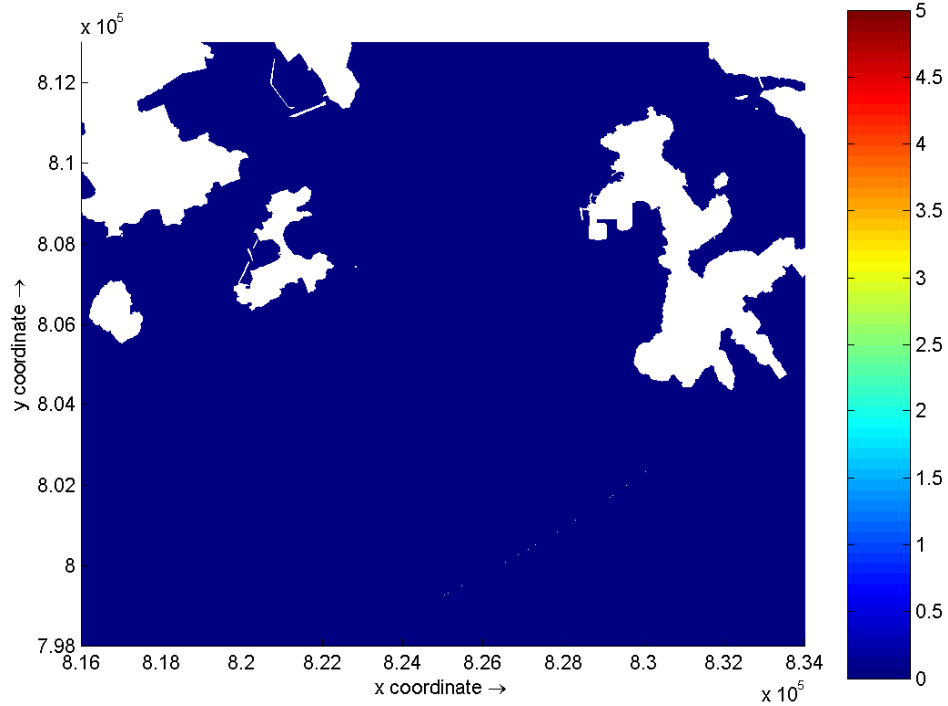
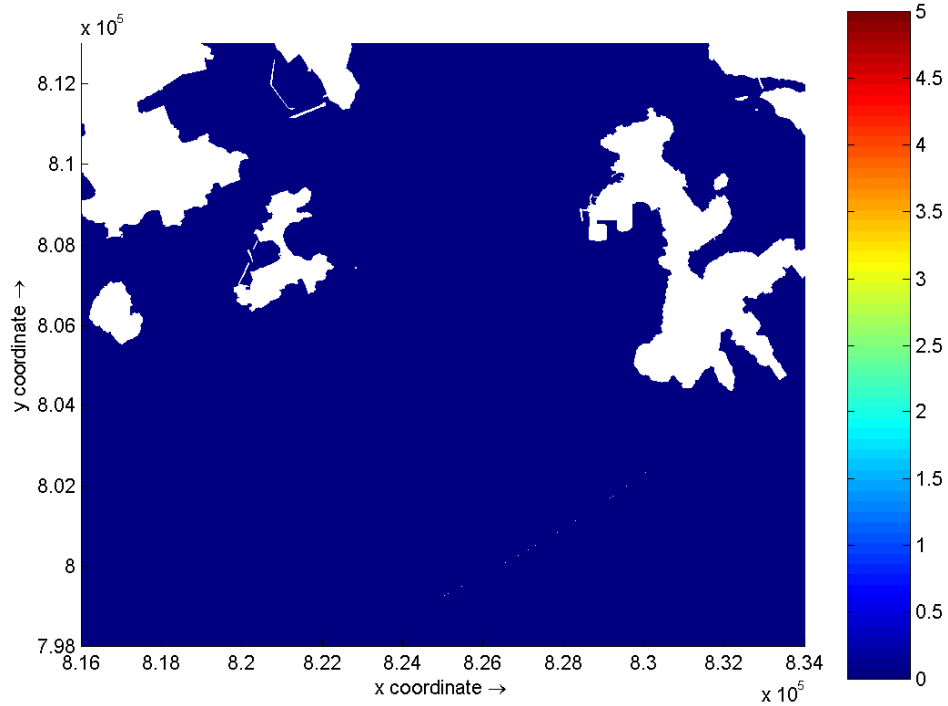




Dissolved Oxygen (mg/L) – maximum depth average depletion on Days 7 (top) and 8 (bottom) of Grab Dredging at Lamma Island Wet Season

Environmental
Resources
Management

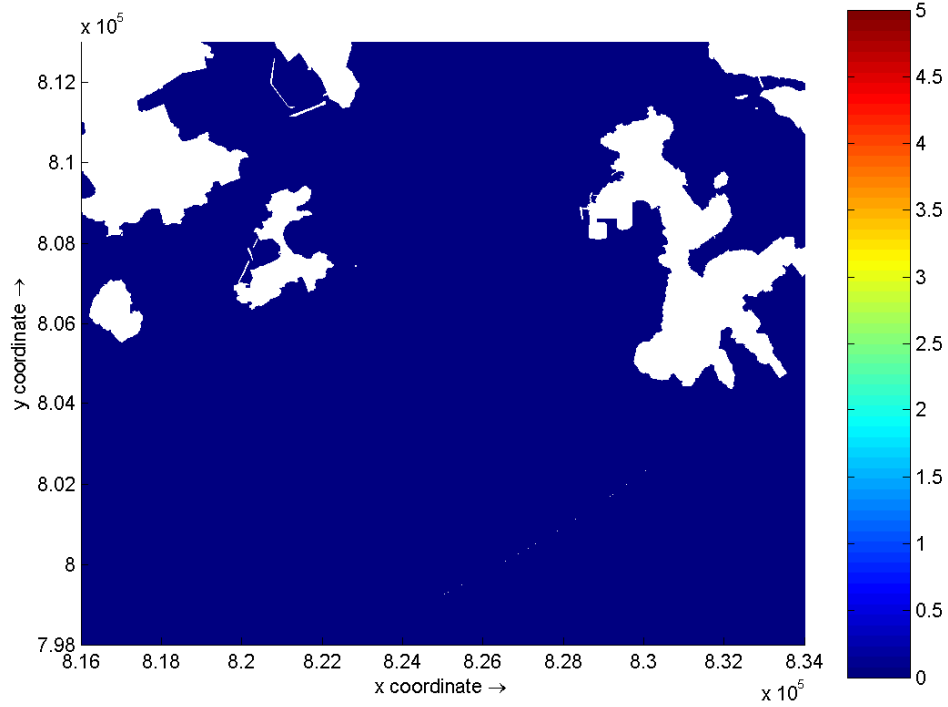
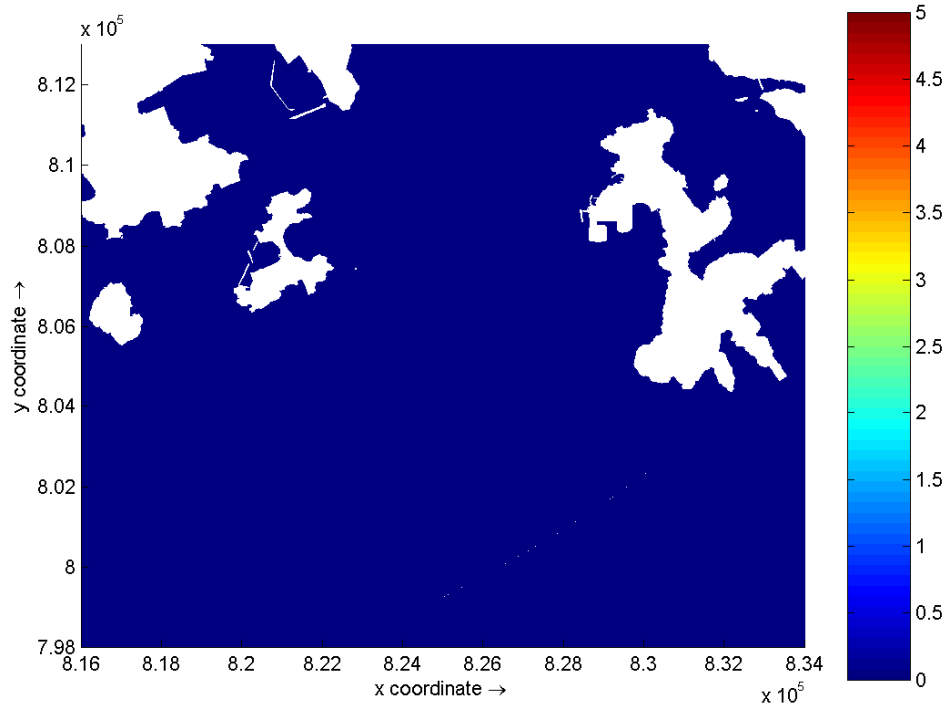




Dissolved Oxygen (mg/L) – maximum depth average depletion on Days 9 (top) and 10 (bottom) of Grab Dredging at Lamma Island Wet Season

Environmental
Resources
Management

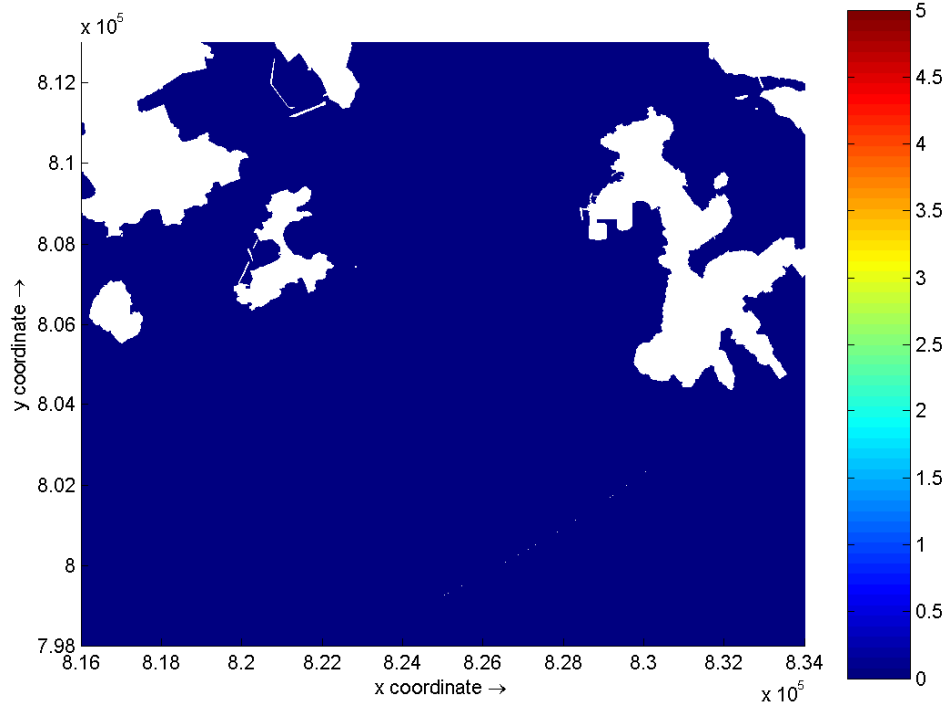
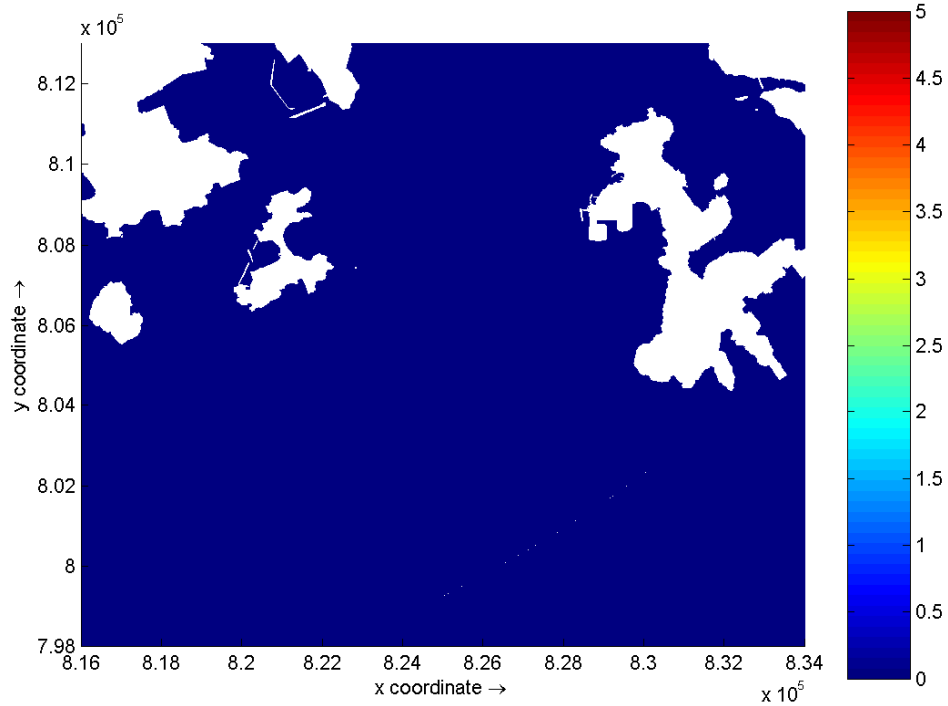




Dissolved Oxygen (mg/L) – maximum depth average depletion on Days 11 (top) and 12 (bottom) of Grab Dredging at Lamma Island Wet Season

Environmental
Resources
Management

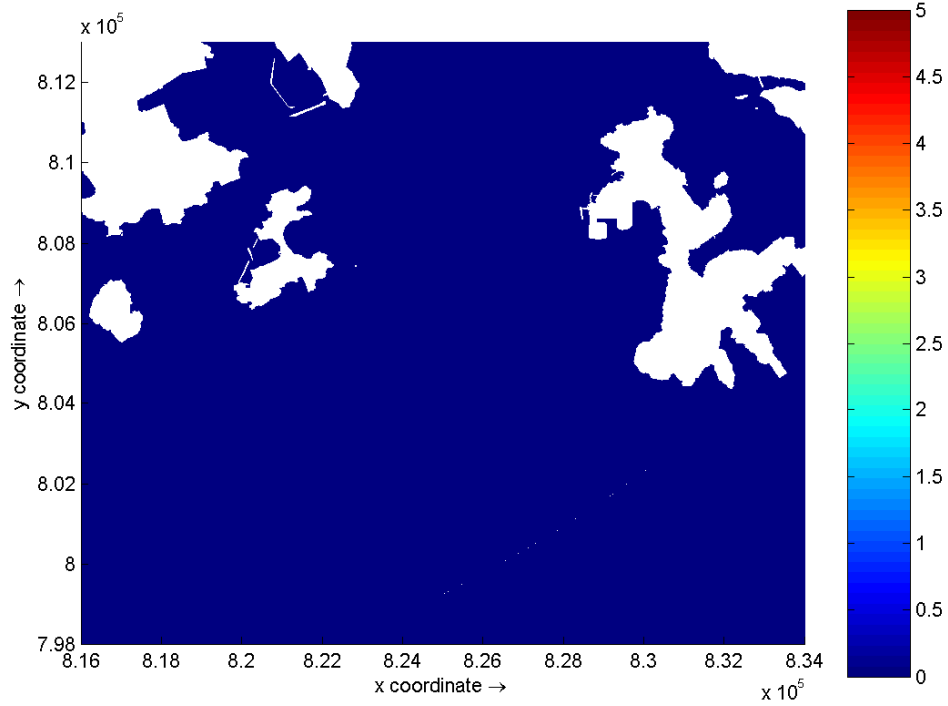




Dissolved Oxygen (mg/L) – maximum depth average depletion on Days 13 (top) and 14 (bottom) of Grab Dredging at Lamma Island Wet Season

Environmental
Resources
Management

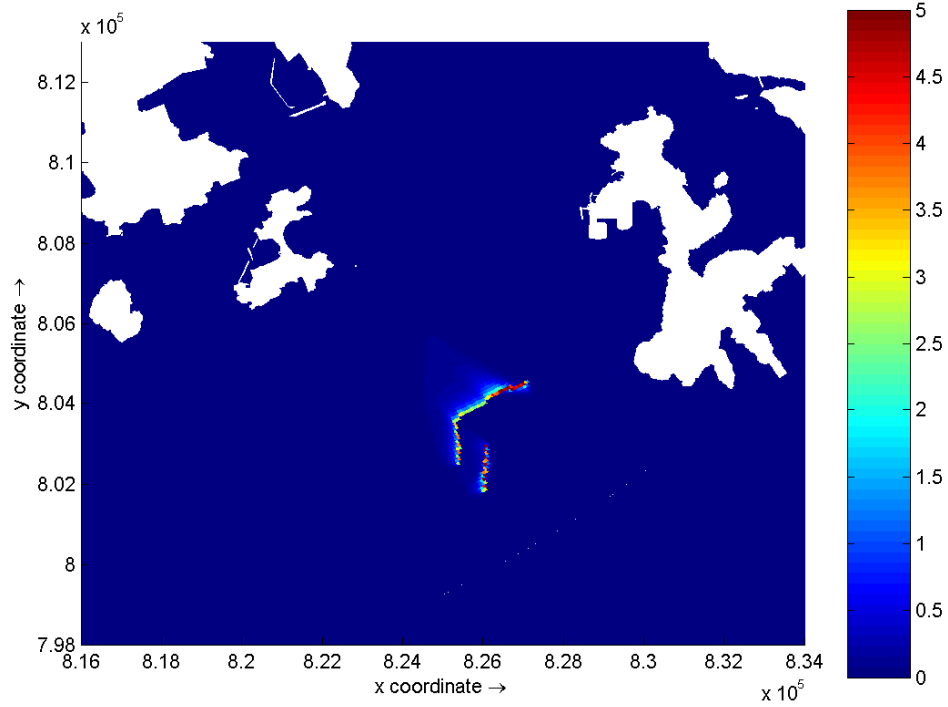
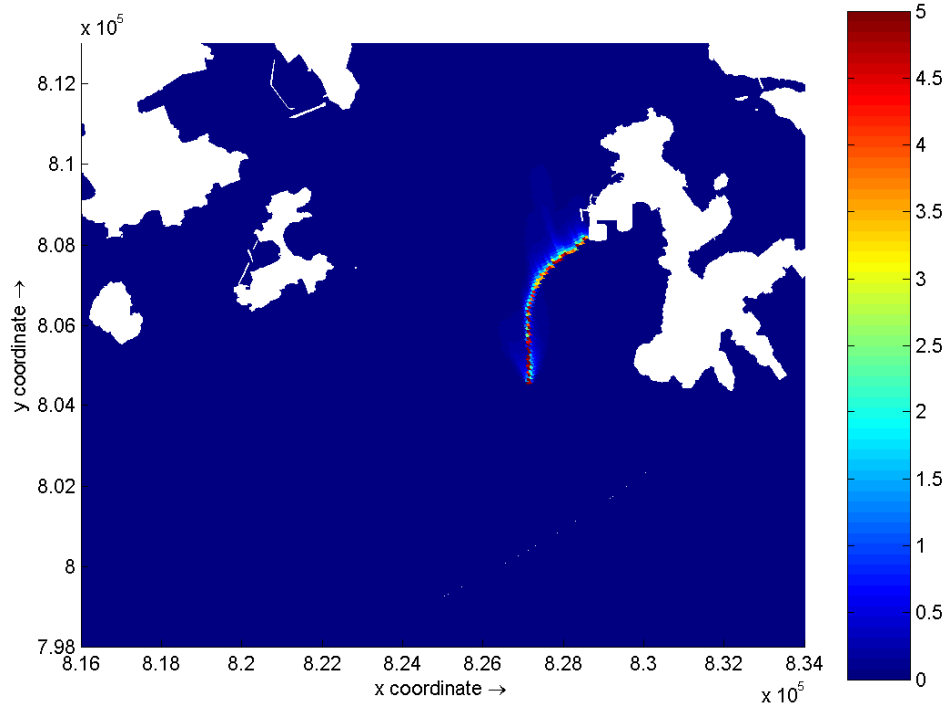




Dissolved Oxygen (mg/L) – maximum depth average depletion on Day 15 of Grab
 Dredging at Lamma Island
 Wet Season

**Environmental
 Resources
 Management**

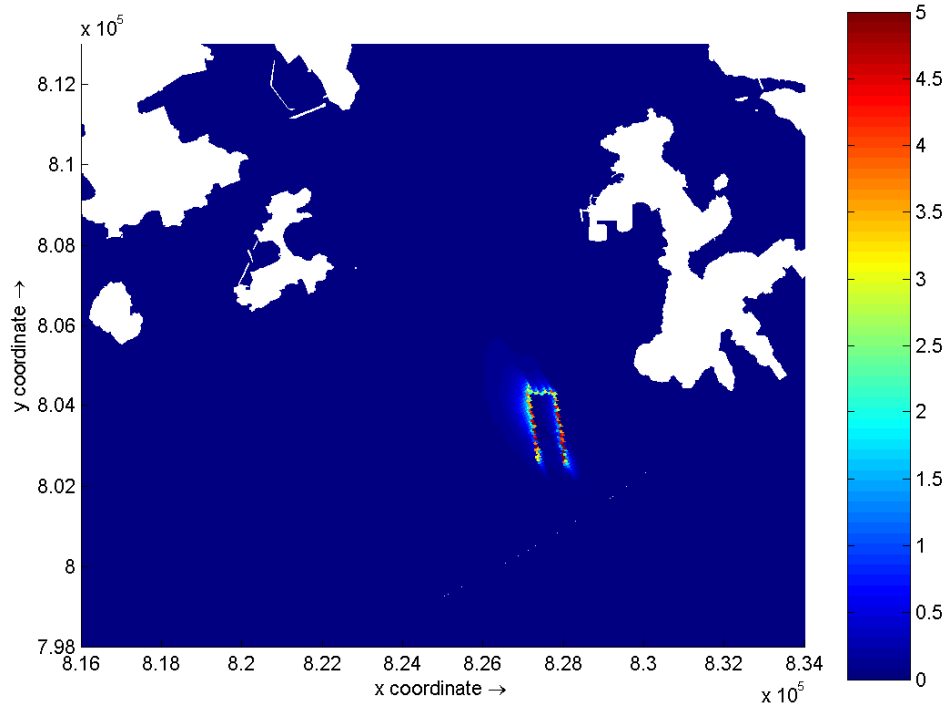
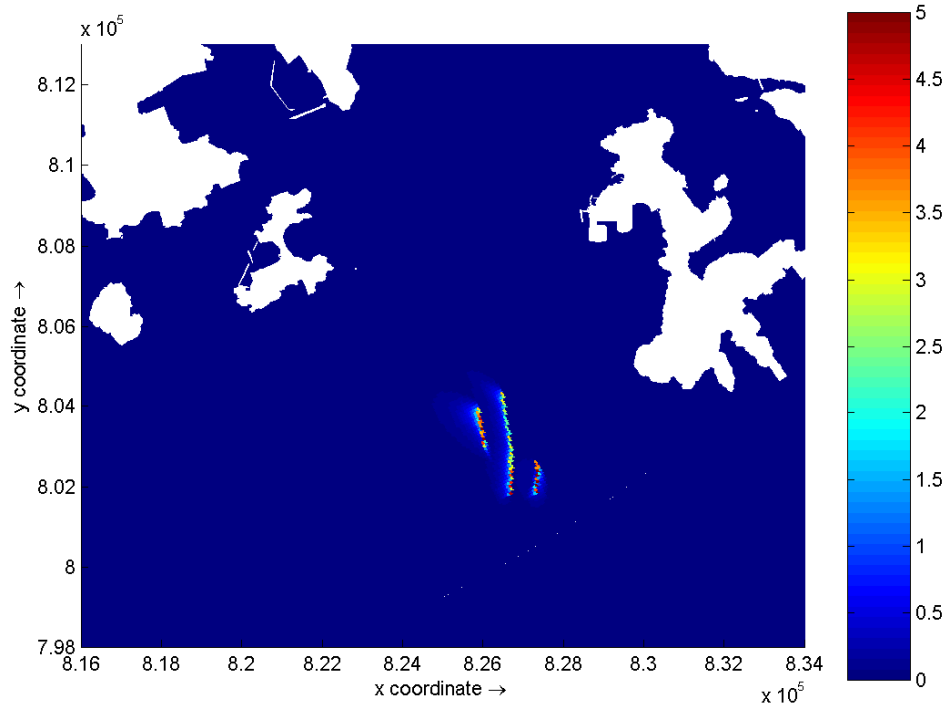




Dissolved Oxygen (mg/L) – maximum bottom layer depletion on Days 1 and 2 of
 Jetting at Lamma Island
 Dry Season

Environmental
 Resources
 Management

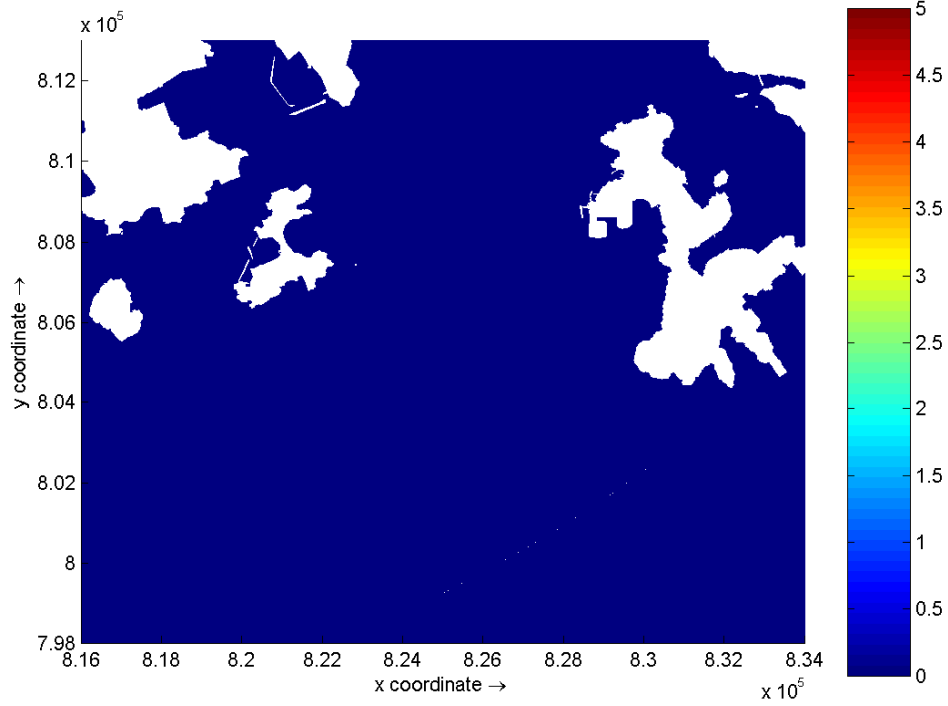
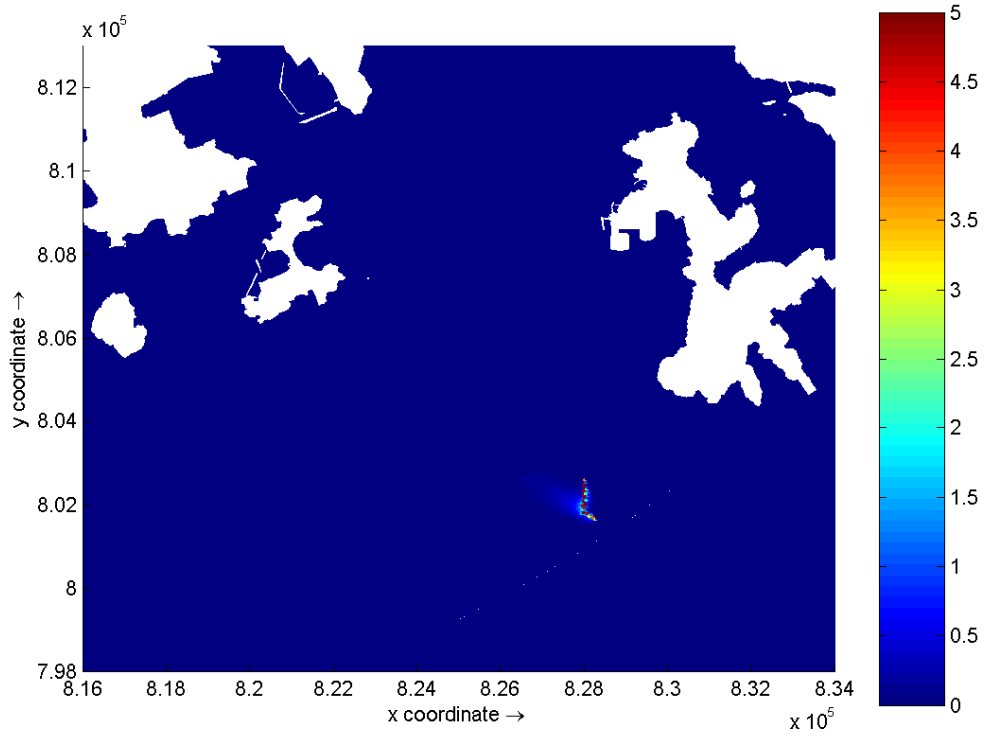




Dissolved Oxygen (mg/L) – maximum bottom layer depletion on Days 3 and 4 of
 Jetting at Lamma Island
 Dry Season

Environmental
 Resources
 Management

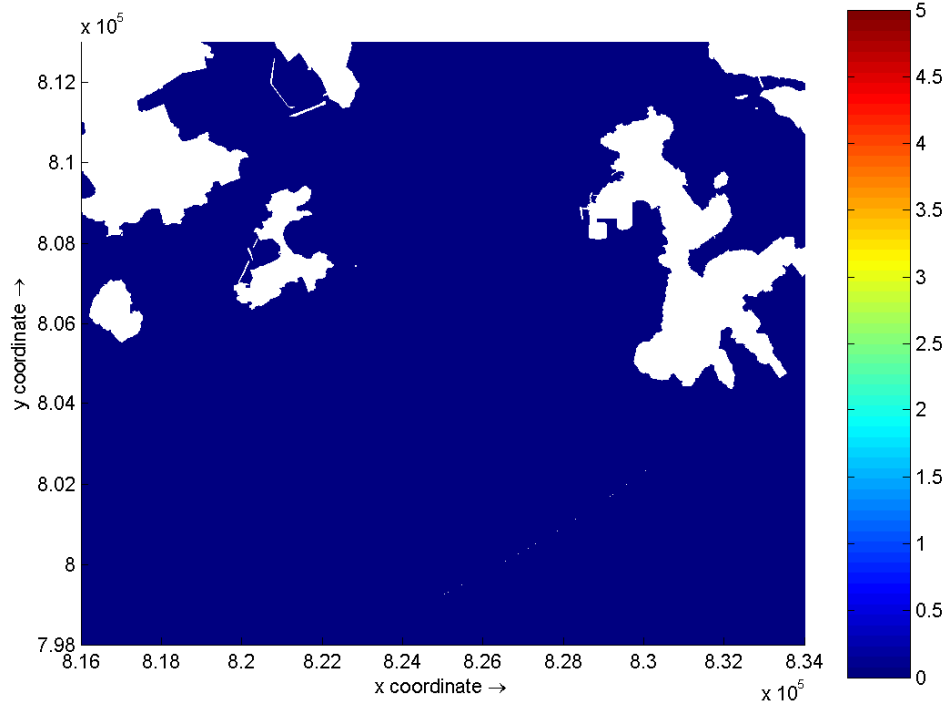
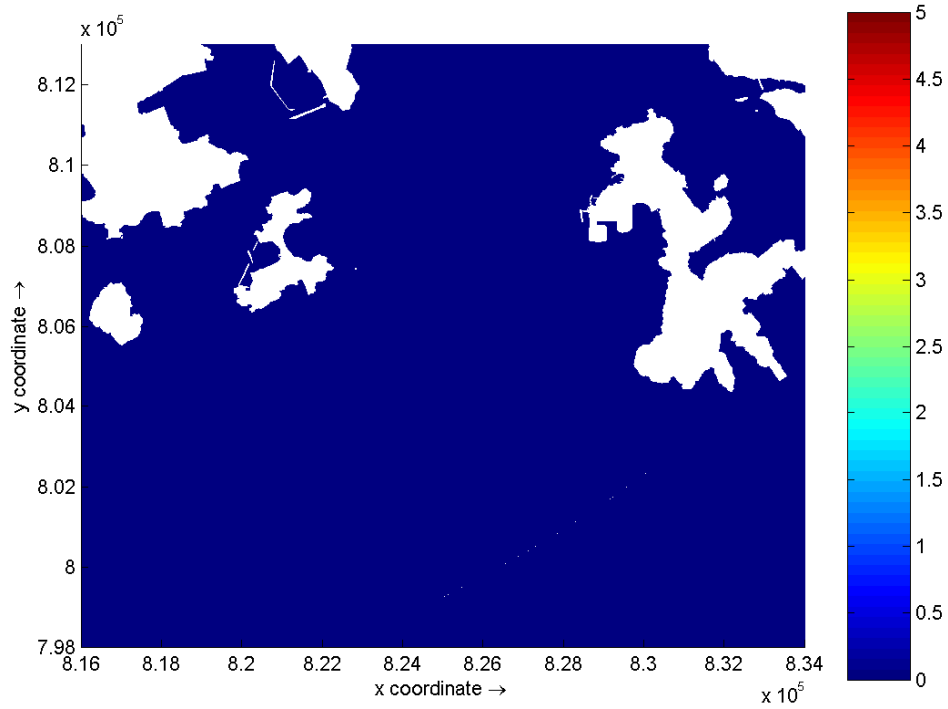




Dissolved Oxygen (mg/L) – maximum bottom layer depletion on Days 5 and 6 of
 Jetting at Lamma Island
 Dry Season

Environmental
 Resources
 Management

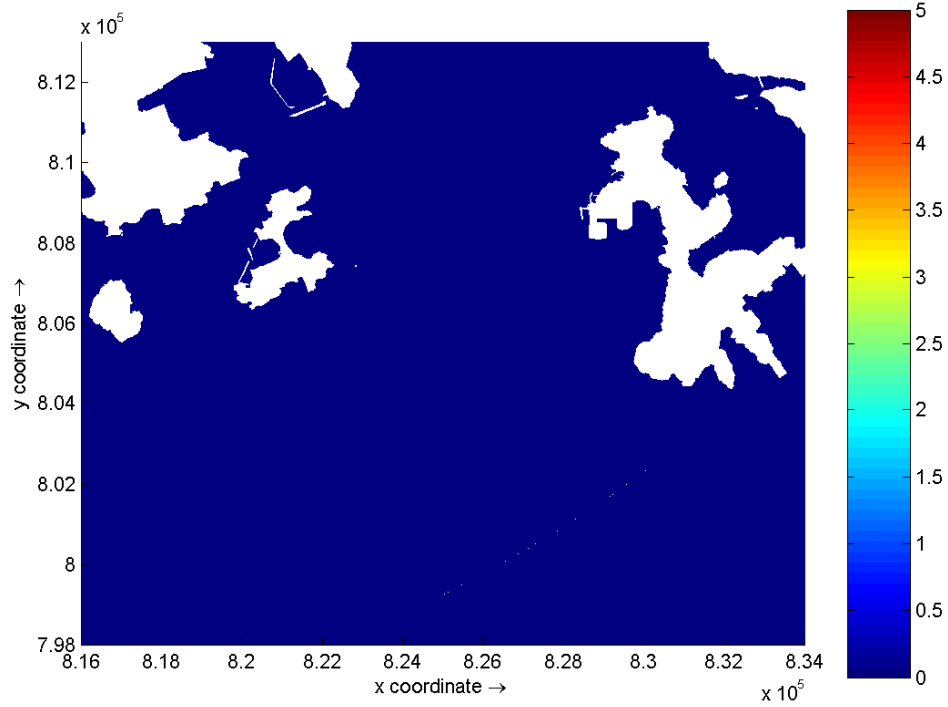
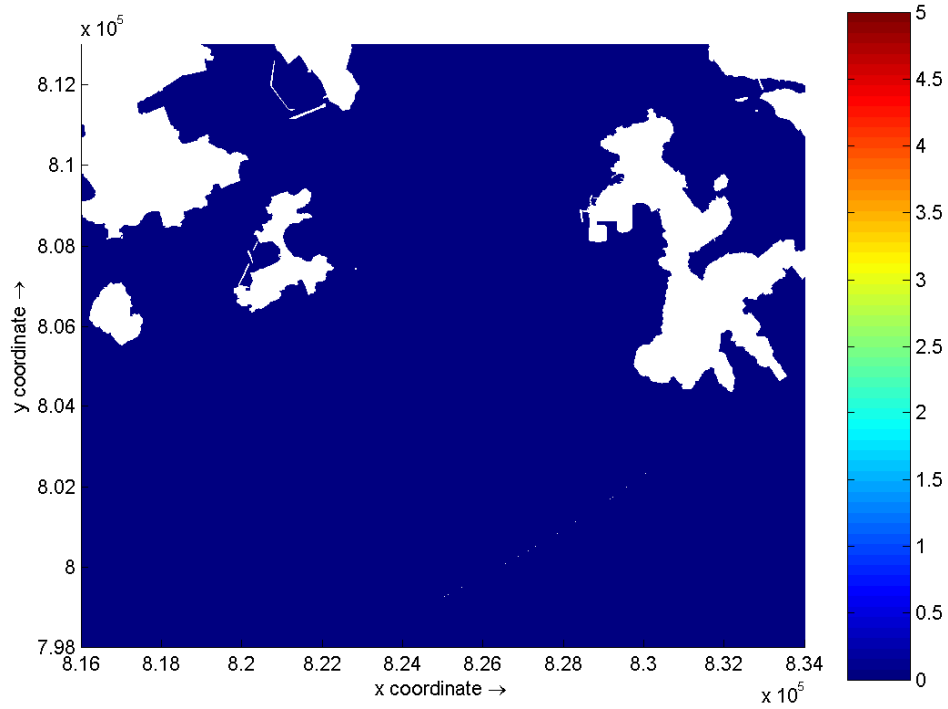




Dissolved Oxygen (mg/L) – maximum bottom layer depletion on Days 7 and 8 of Jetting at Lamma Island Dry Season

Environmental Resources Management

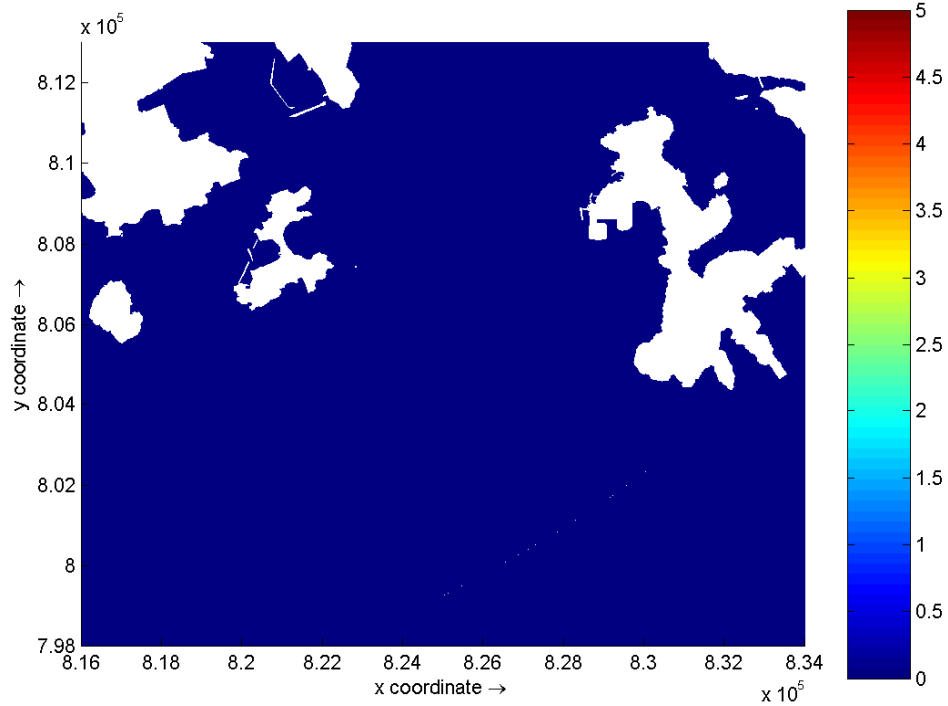
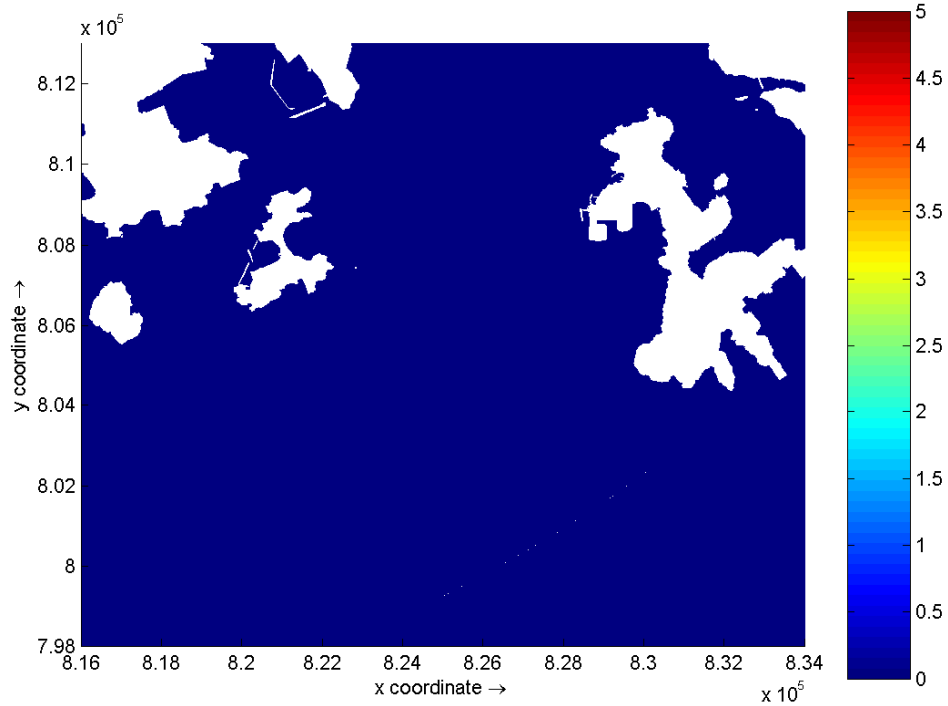




Dissolved Oxygen (mg/L) – maximum bottom layer depletion on Days 9 and 10 of
 Jetting at Lamma Island
 Dry Season

Environmental
 Resources
 Management

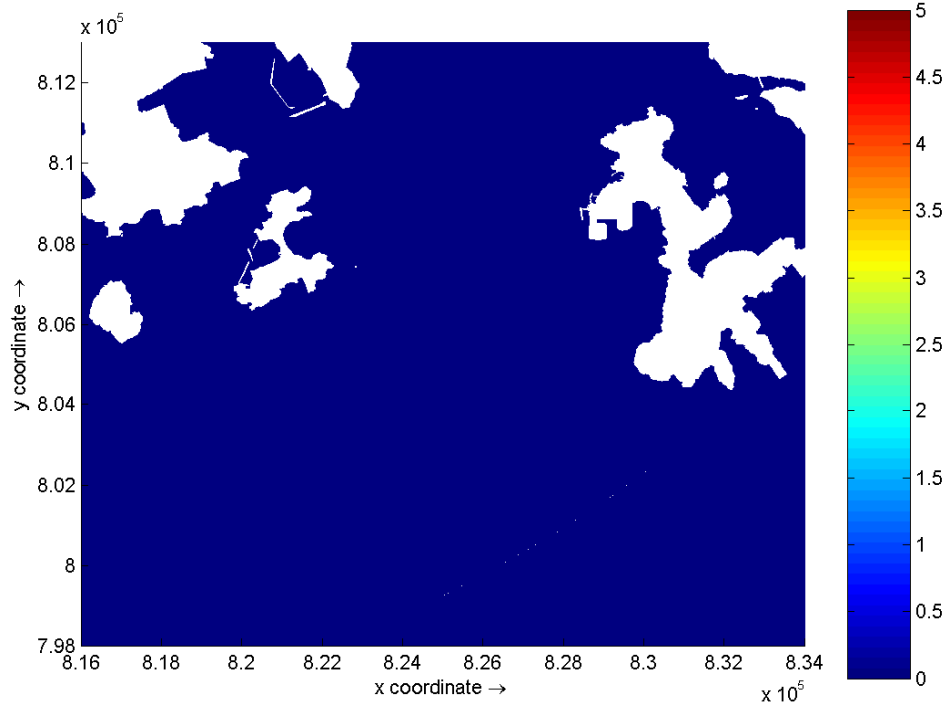
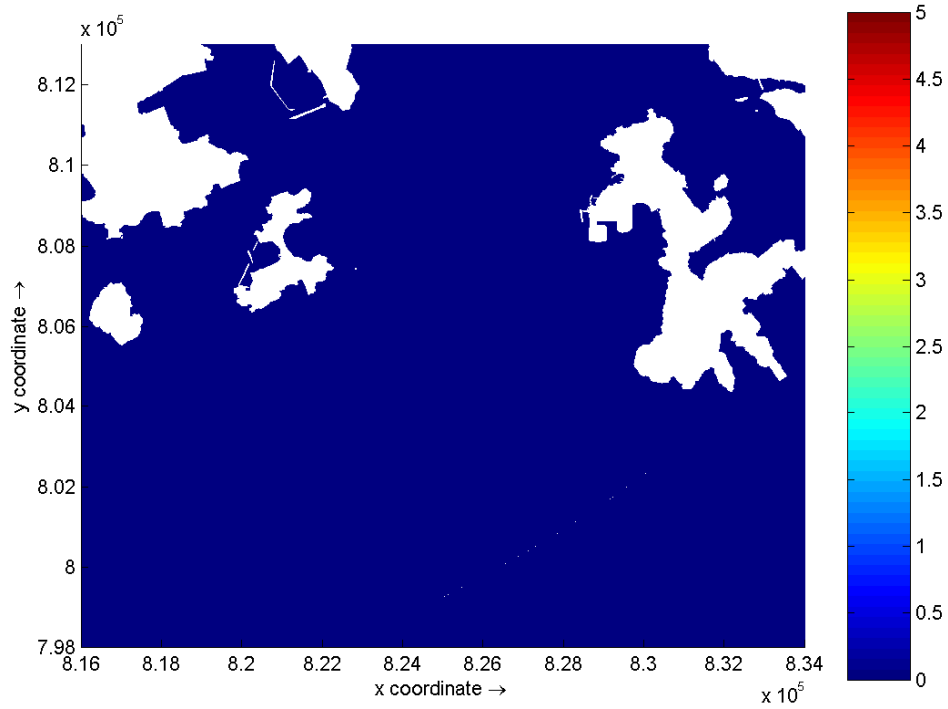




Dissolved Oxygen (mg/L) – maximum bottom layer depletion on Days 11 and 12 of
 Jetting at Lamma Island
 Dry Season

Environmental
 Resources
 Management

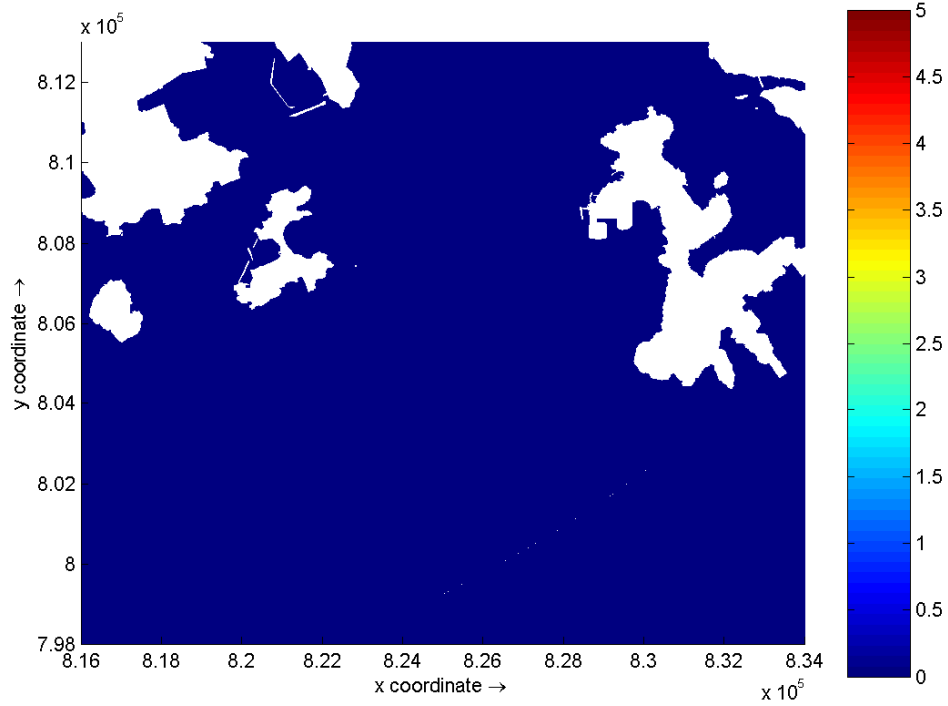




Dissolved Oxygen (mg/L) – maximum bottom layer depletion on Days 13 and 14 of Jetting at Lamma Island Dry Season

Environmental
Resources
Management

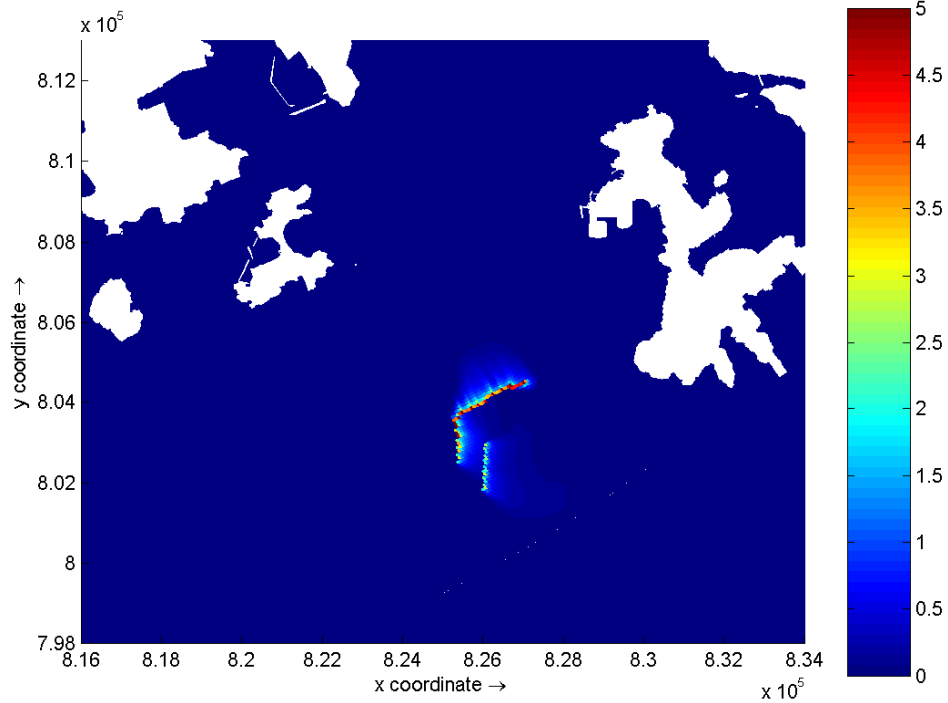
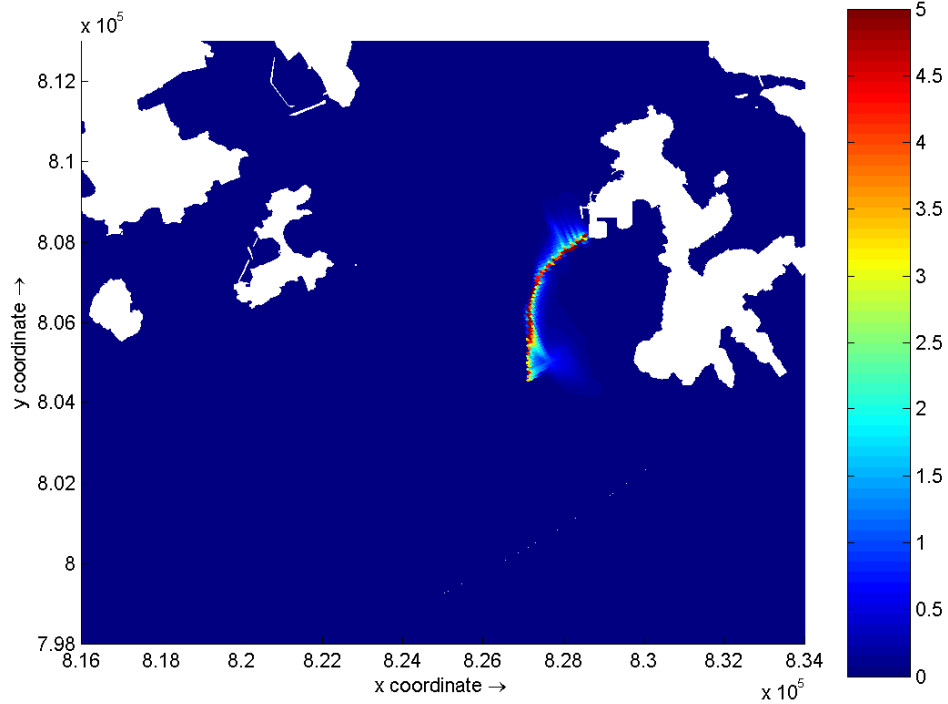




Dissolved Oxygen (mg/L) – maximum bottom layer depletion on Day 15 of Jetting
 at Lamma Island
 Dry Season

Environmental
 Resources
 Management

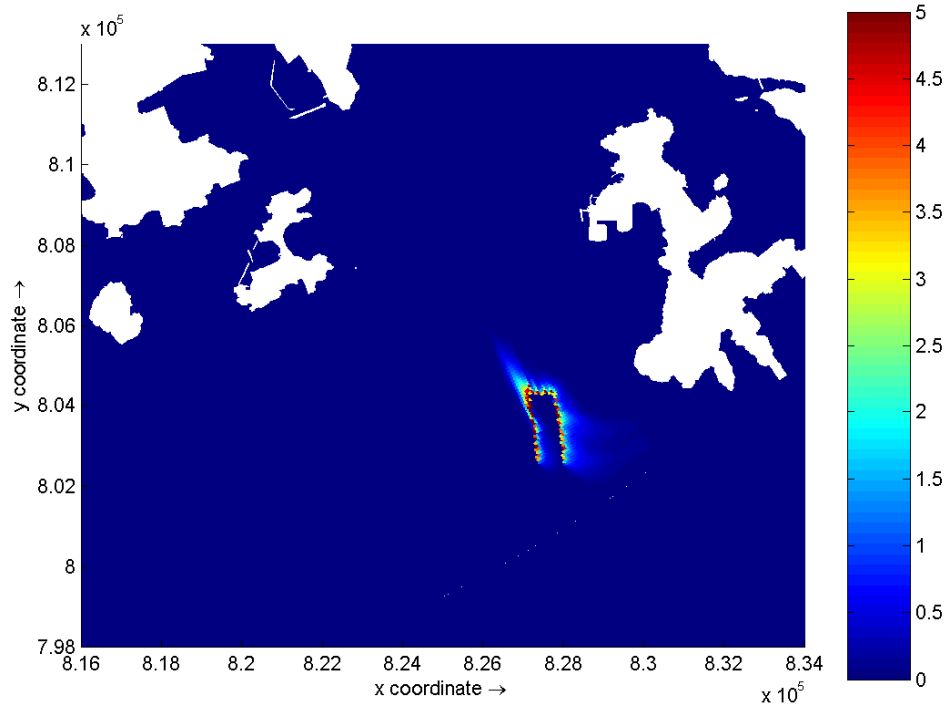
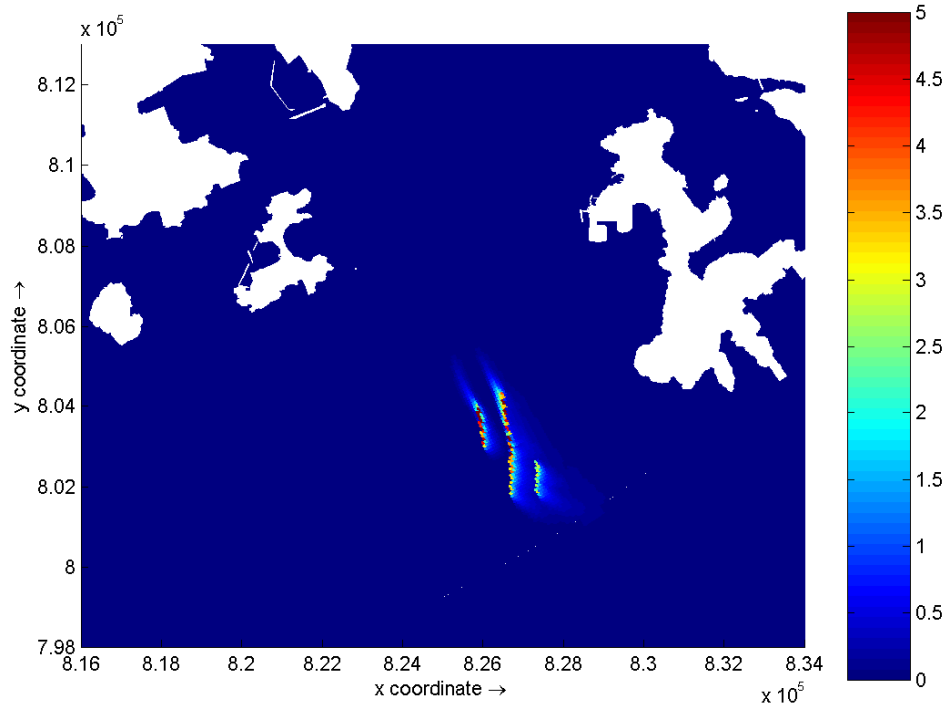




Dissolved Oxygen (mg/L) – maximum bottom layer depletion on Days 1 and 2 of
 Jetting at Lamma Island
 Wet Season

Environmental
 Resources
 Management

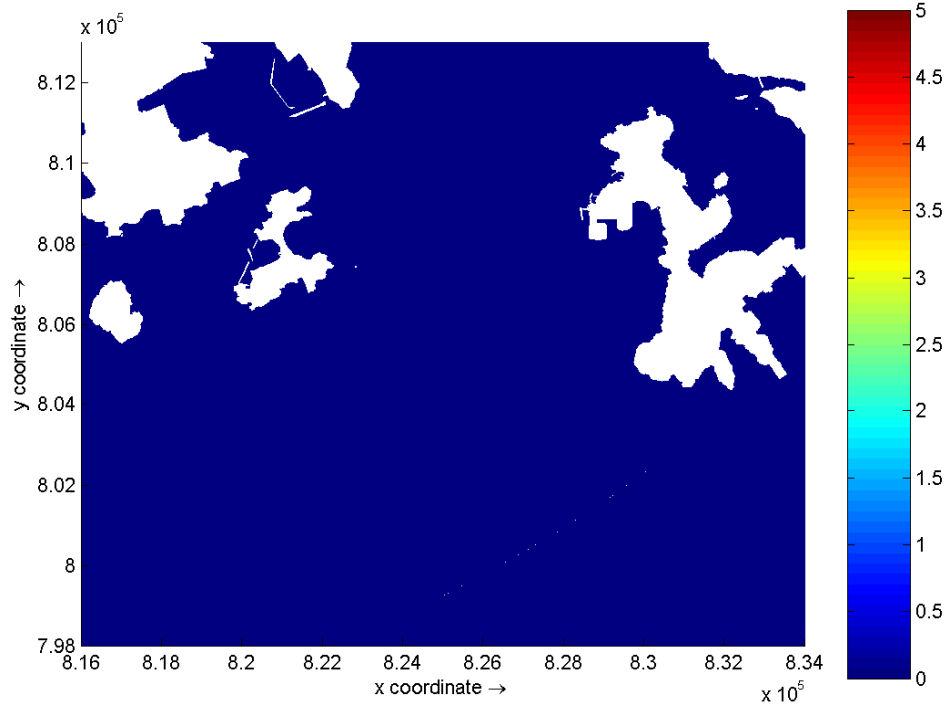
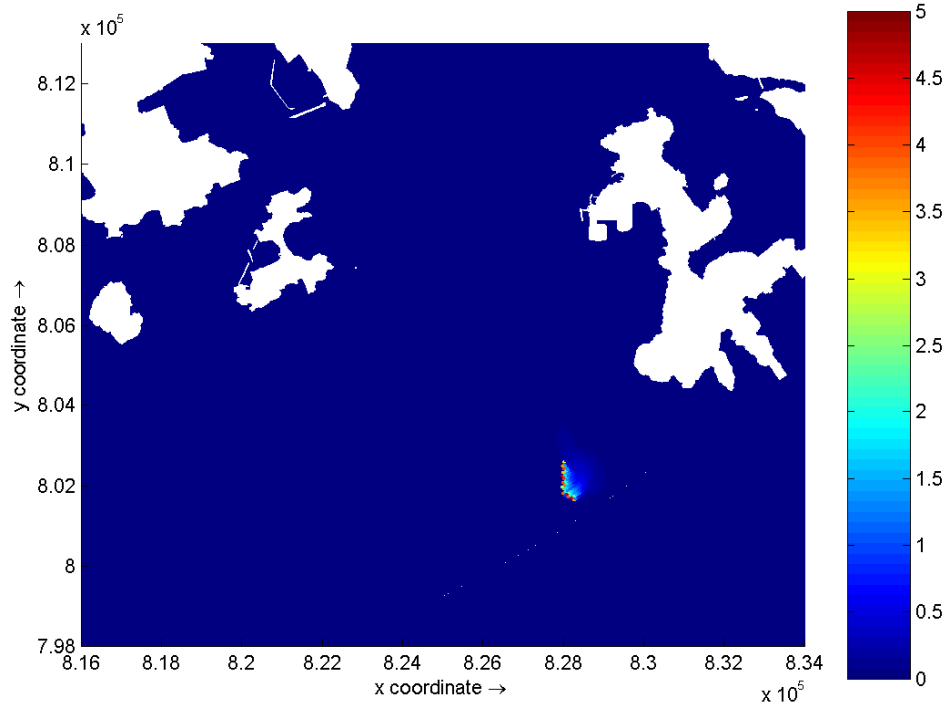




Dissolved Oxygen (mg/L) – maximum bottom layer depletion on Days 3 and 4 of
 Jetting at Lamma Island
 Wet Season

Environmental
 Resources
 Management

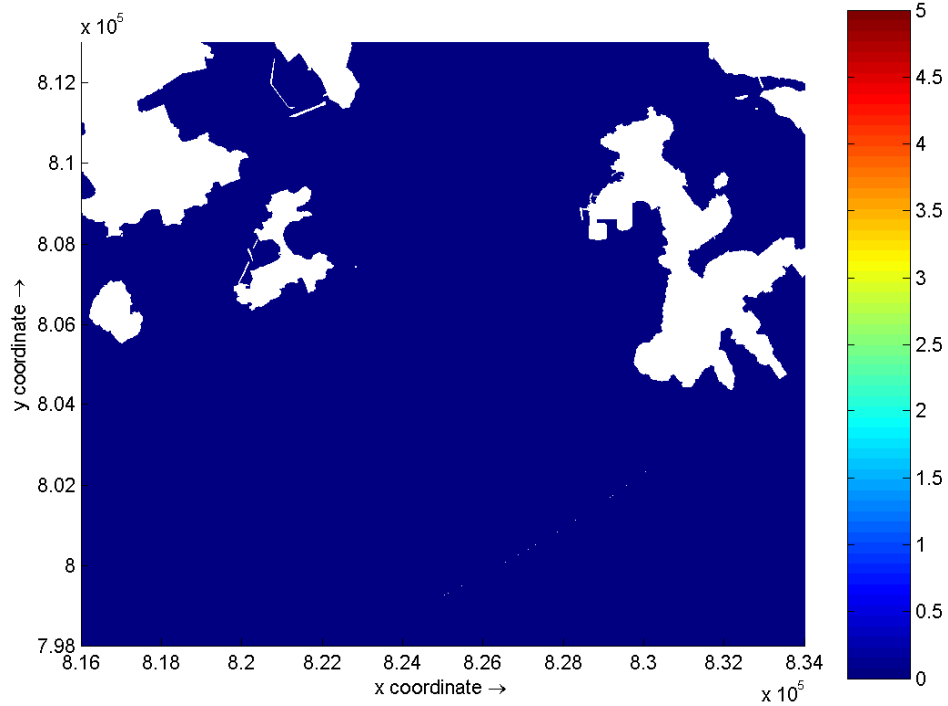
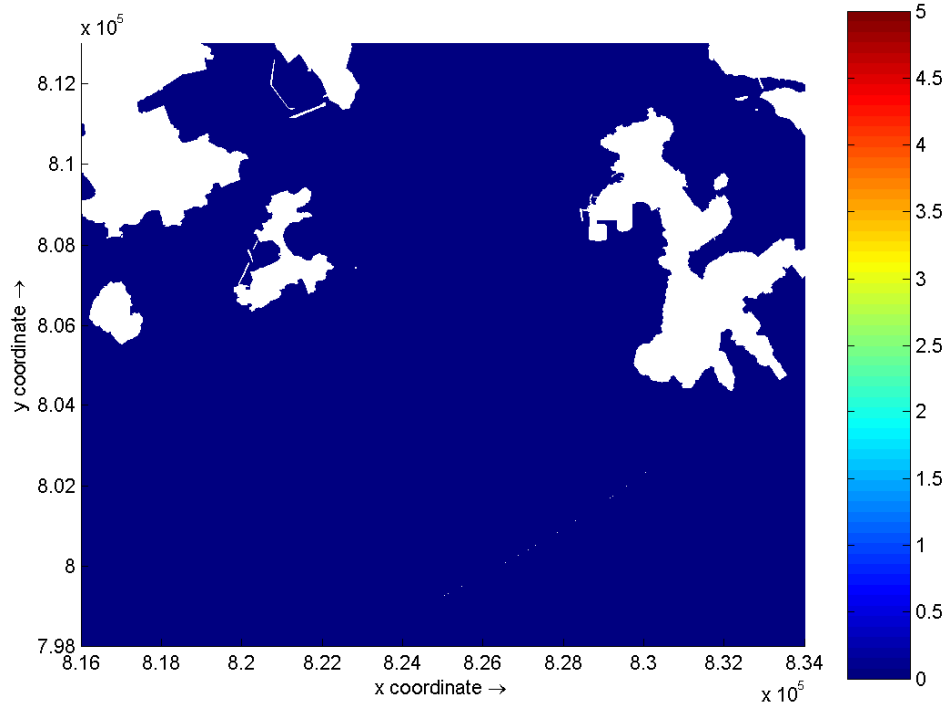




Dissolved Oxygen (mg/L) – maximum bottom layer depletion on Days 5 and 6 of
 Jetting at Lamma Island
 Wet Season

Environmental
 Resources
 Management

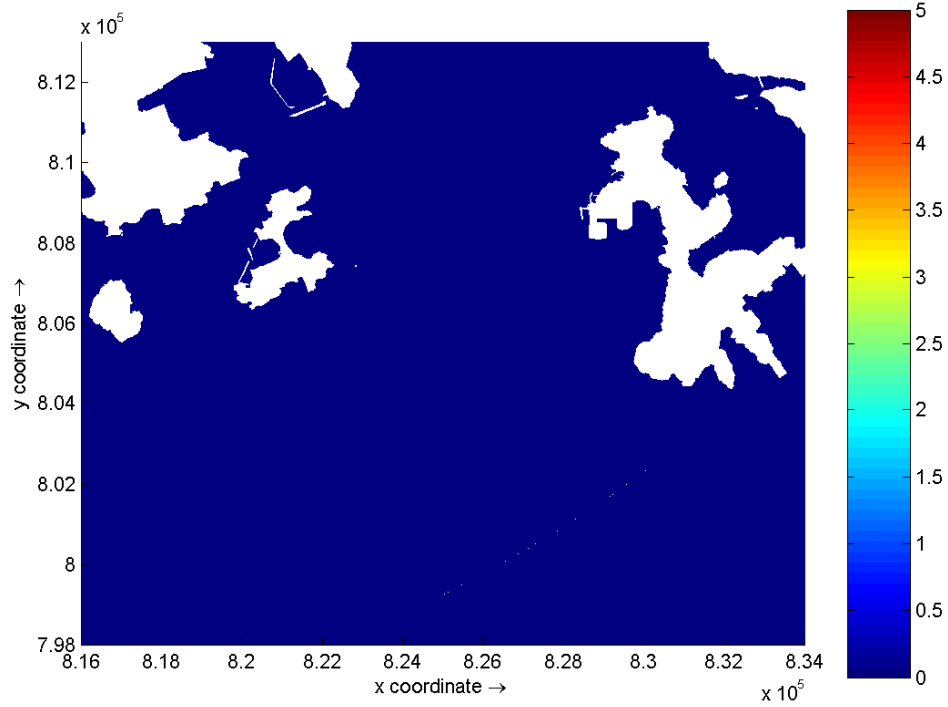
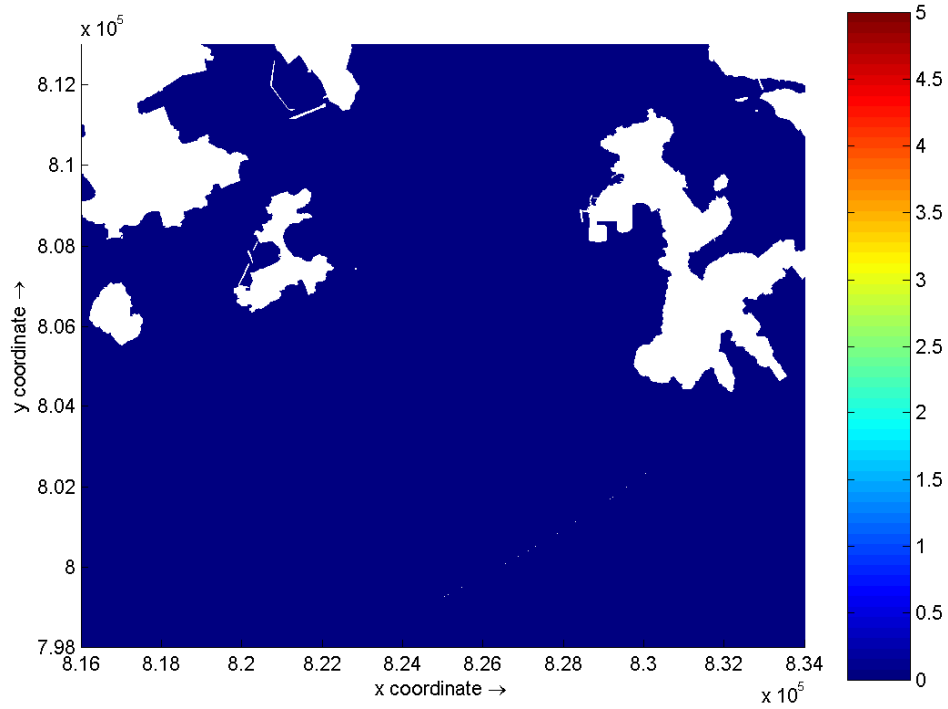




Dissolved Oxygen (mg/L) – maximum bottom layer depletion on Days 7 and 8 of
 Jetting at Lamma Island
 Wet Season

Environmental
 Resources
 Management

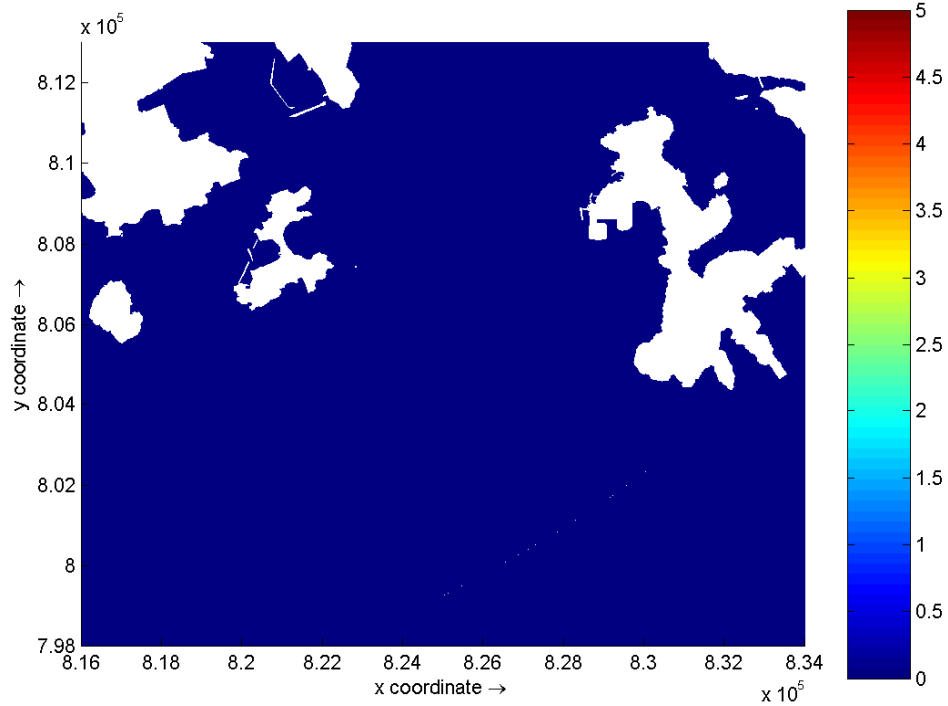
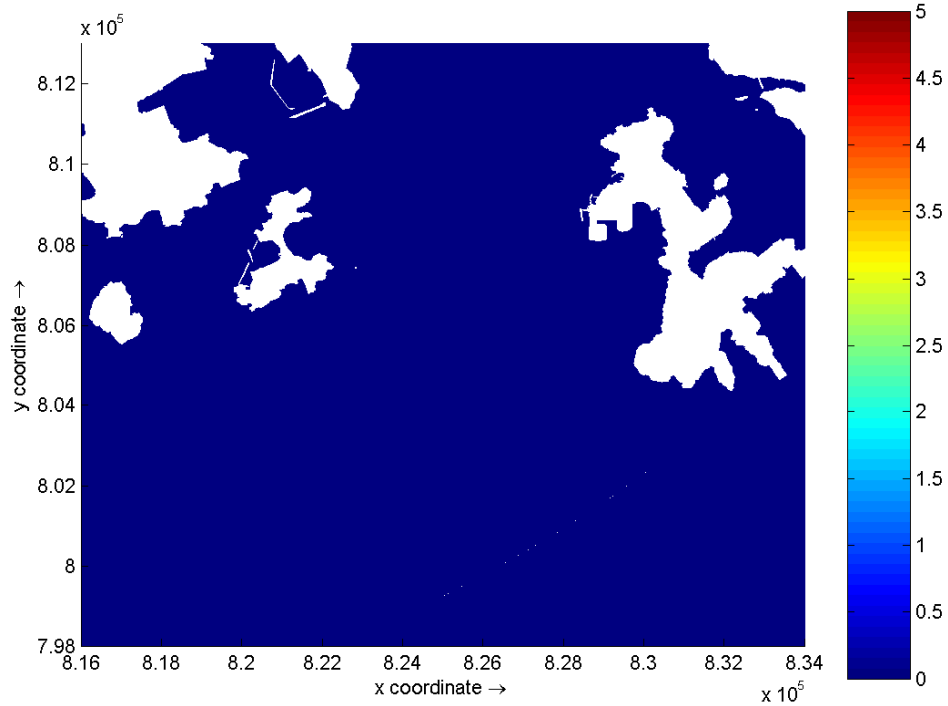




Dissolved Oxygen (mg/L) – maximum bottom layer depletion on Days 9 and 10 of
 Jetting at Lamma Island
 Wet Season

Environmental
 Resources
 Management

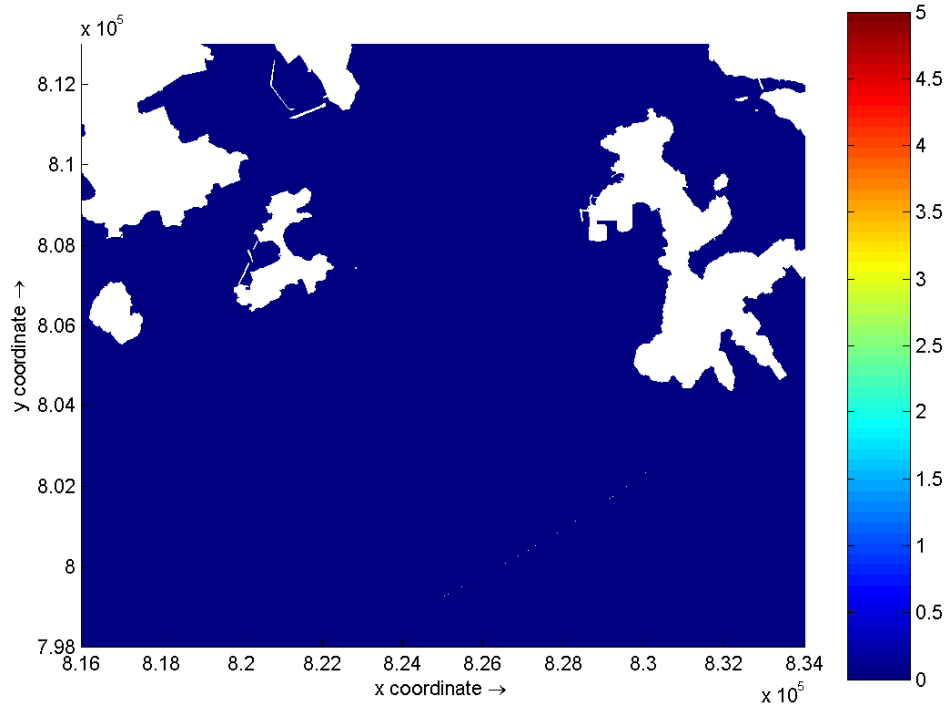
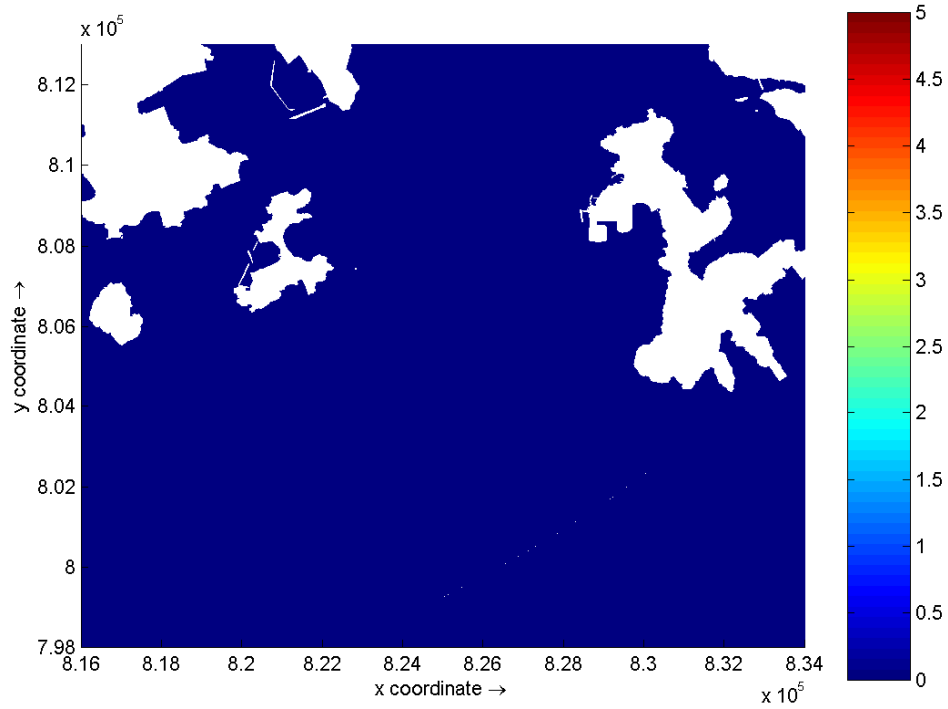




Dissolved Oxygen (mg/L) – maximum bottom layer depletion on Days 11 and 12 of
 Jetting at Lamma Island
 Wet Season

Environmental
 Resources
 Management

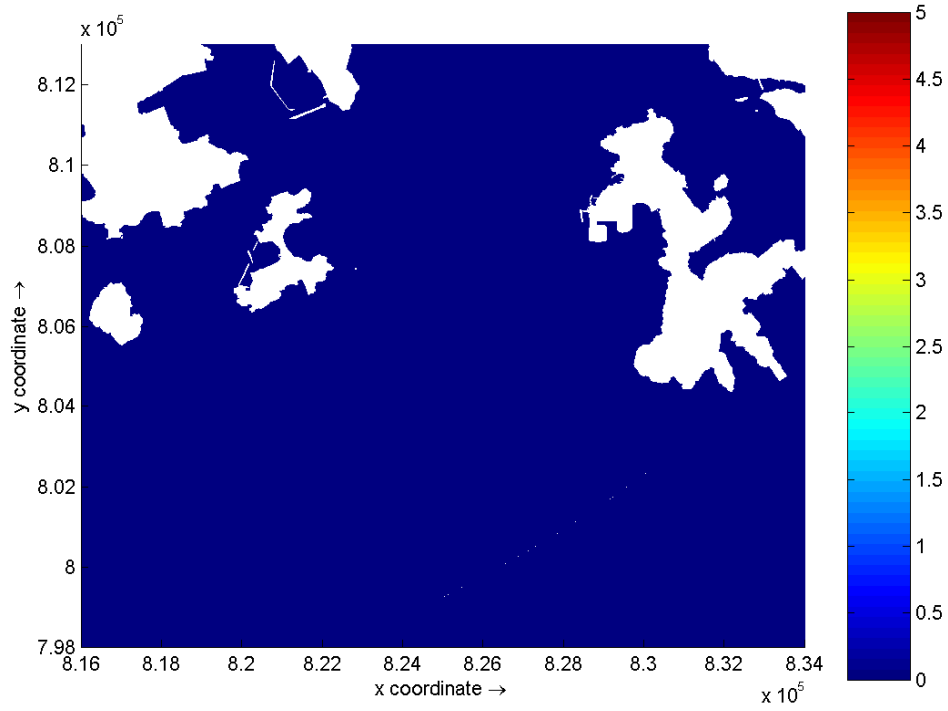




Dissolved Oxygen (mg/L) – maximum bottom layer depletion on Days 13 and 14 of
 Jetting at Lamma Island
 Wet Season

Environmental
 Resources
 Management

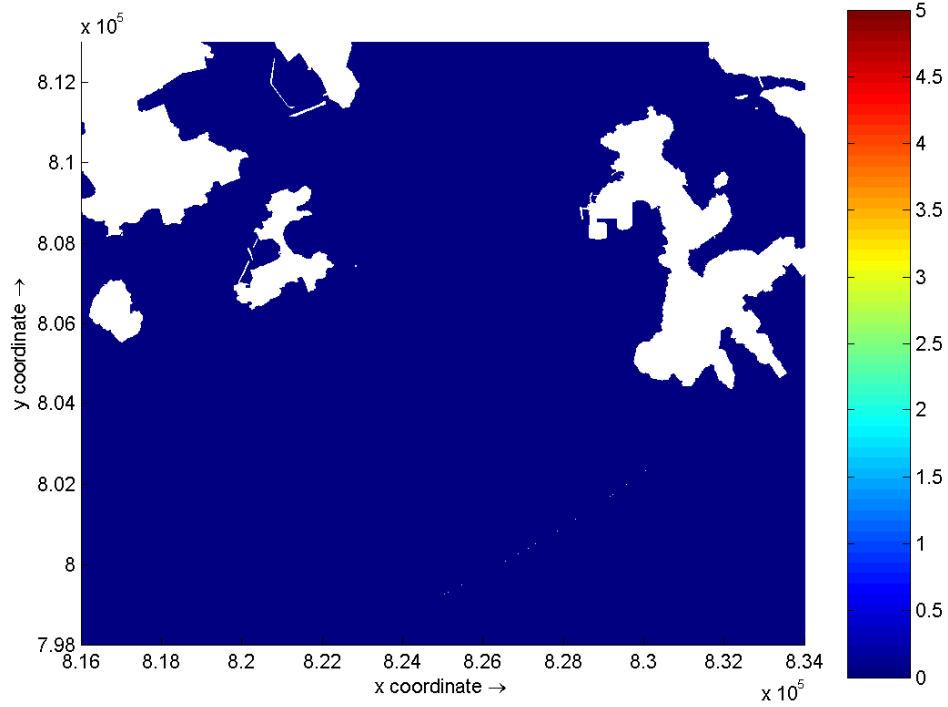
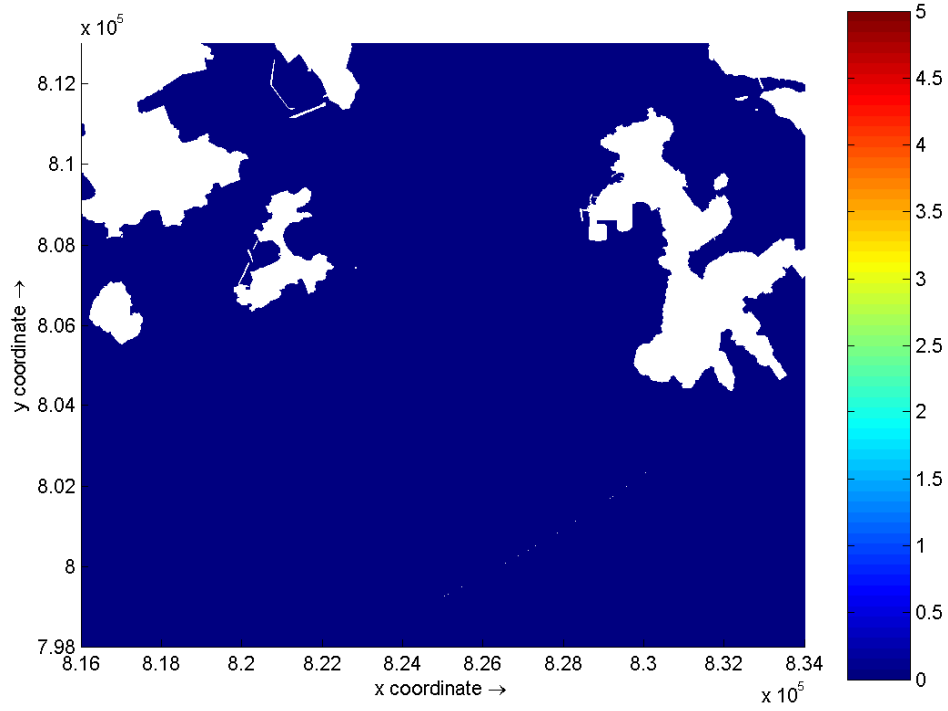




Dissolved Oxygen (mg/L) – maximum bottom layer depletion on Day 15 of Jetting
at Lamma Island
Wet Season

Environmental
Resources
Management

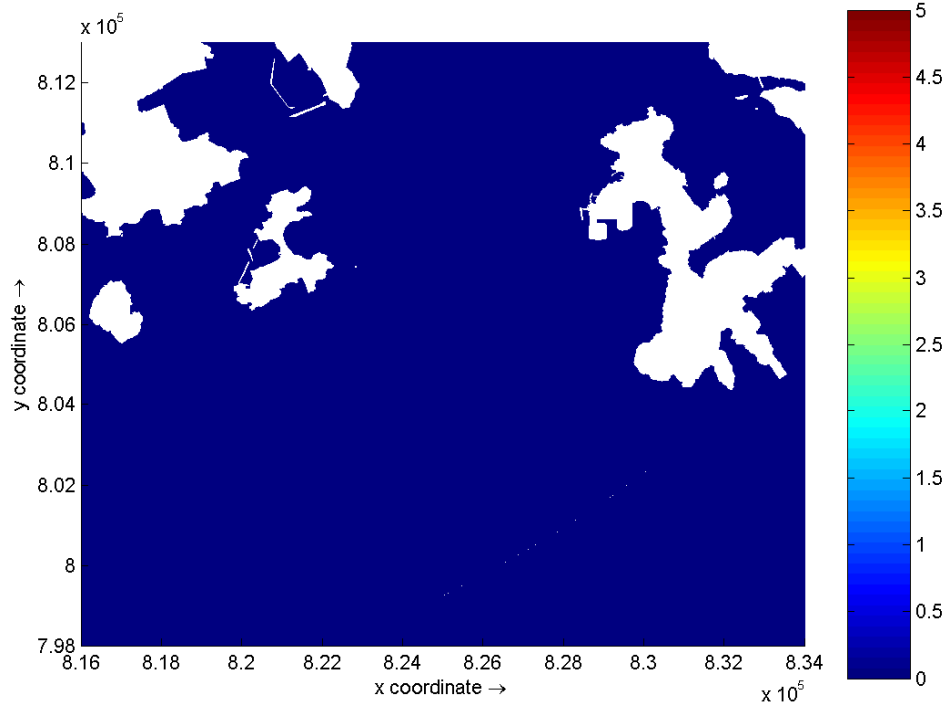
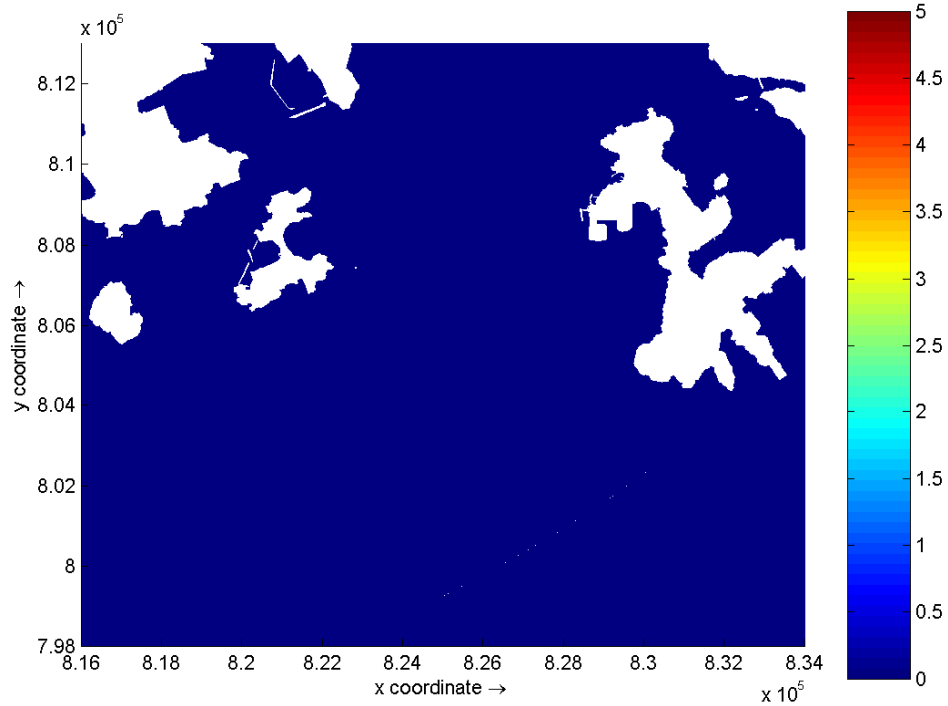




Dissolved Oxygen (mg/L) – maximum depth average depletion on Days 1 and 2 of
 Foundation Construction at Lamma Island
 Dry Season

**Environmental
 Resources
 Management**

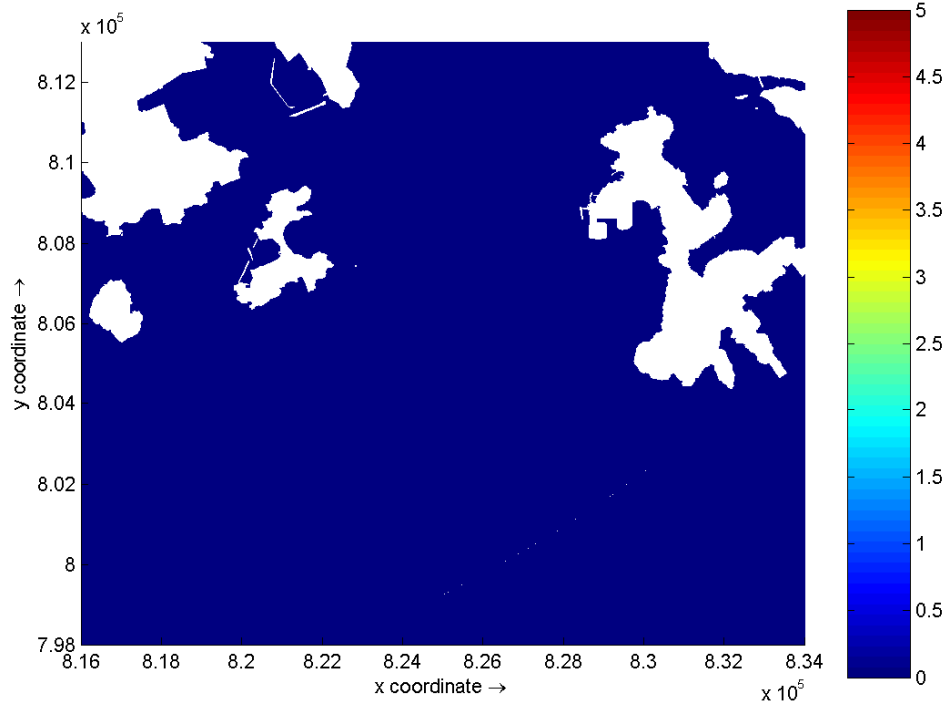
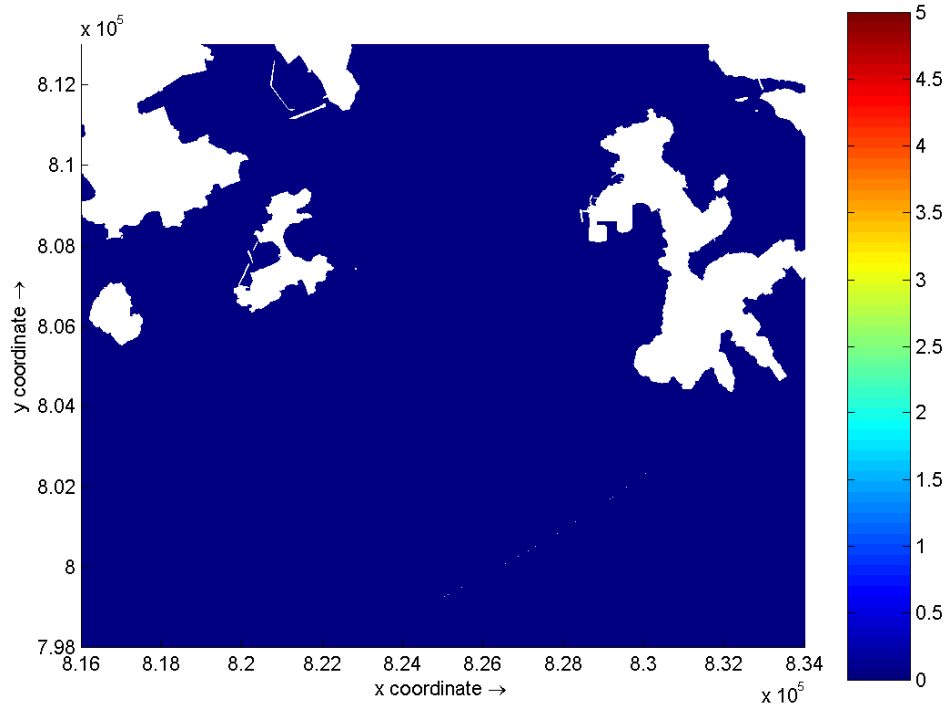




Dissolved Oxygen (mg/L) – maximum depth average depletion on Days 3 and 4 of Foundation Construction at Lamma Island Dry Season

Environmental
Resources
Management

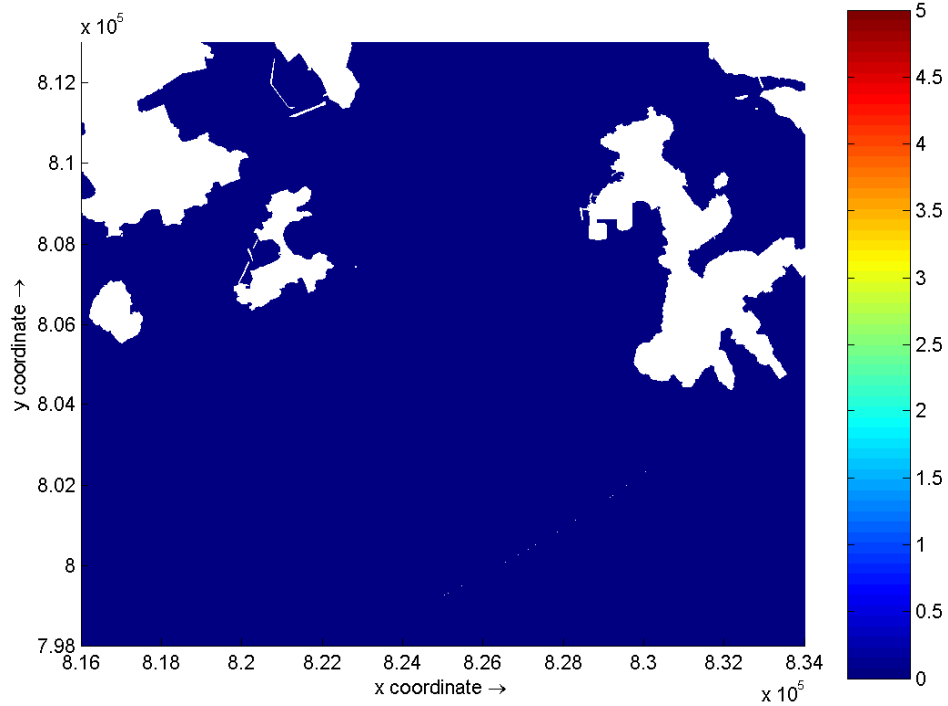
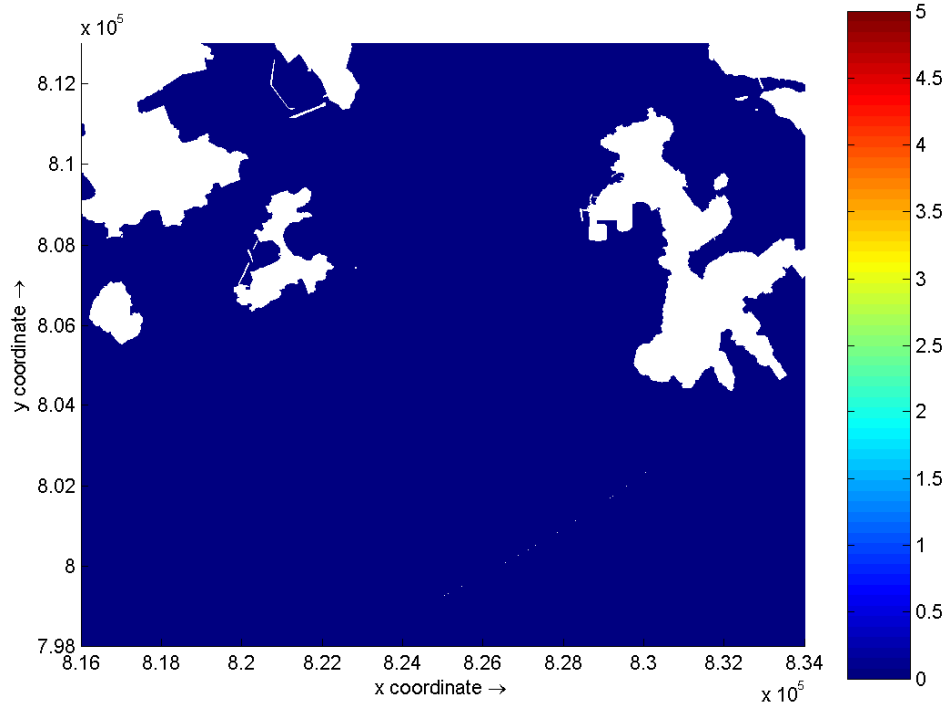




Dissolved Oxygen (mg/L) – maximum depth average depletion on Days 5 and 6 of
 Foundation Construction at Lamma Island
 Dry Season

**Environmental
 Resources
 Management**

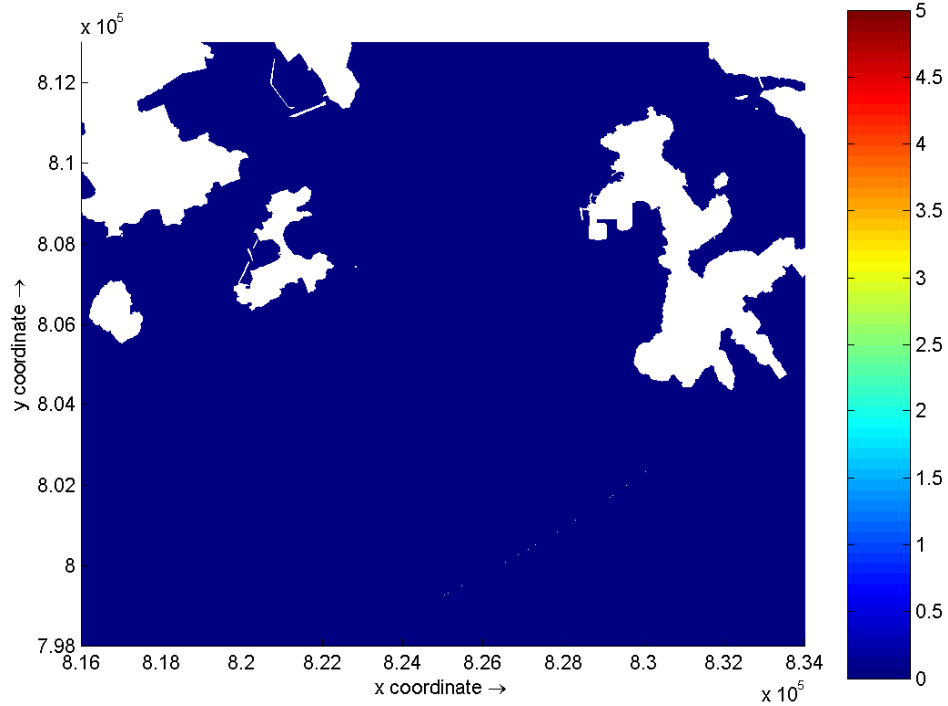
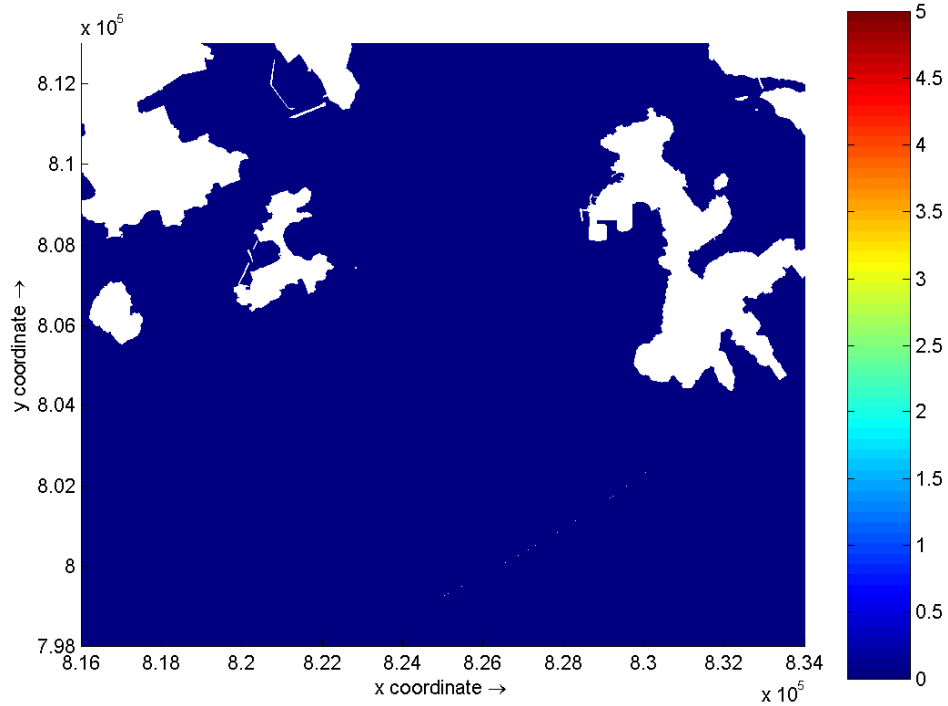




Dissolved Oxygen (mg/L) – maximum depth average depletion on Days 7 and 8 of
 Foundation Construction at Lamma Island
 Dry Season

Environmental
 Resources
 Management

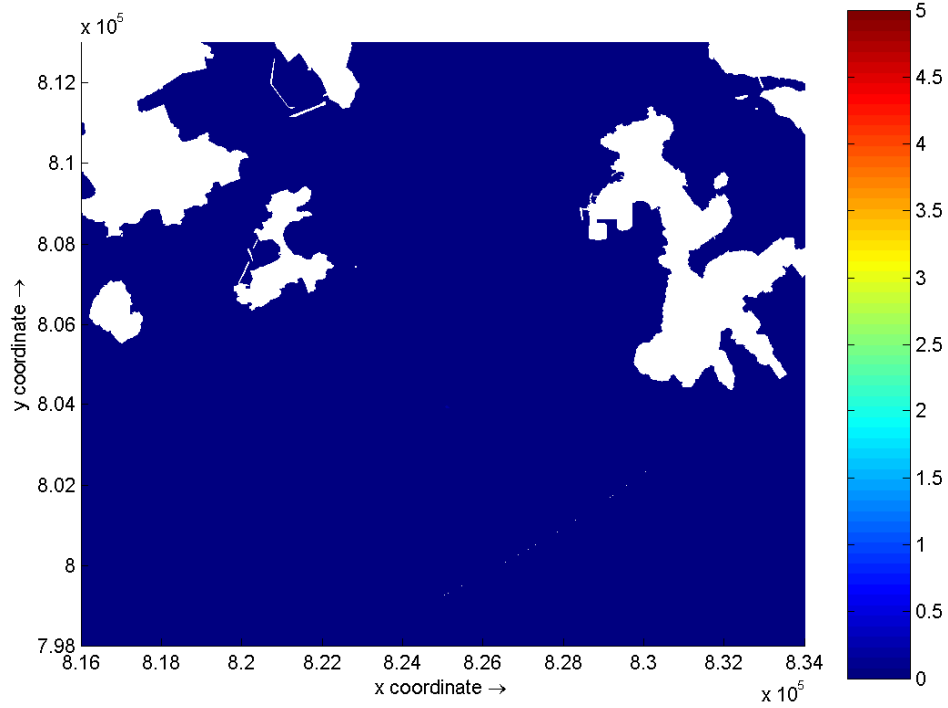
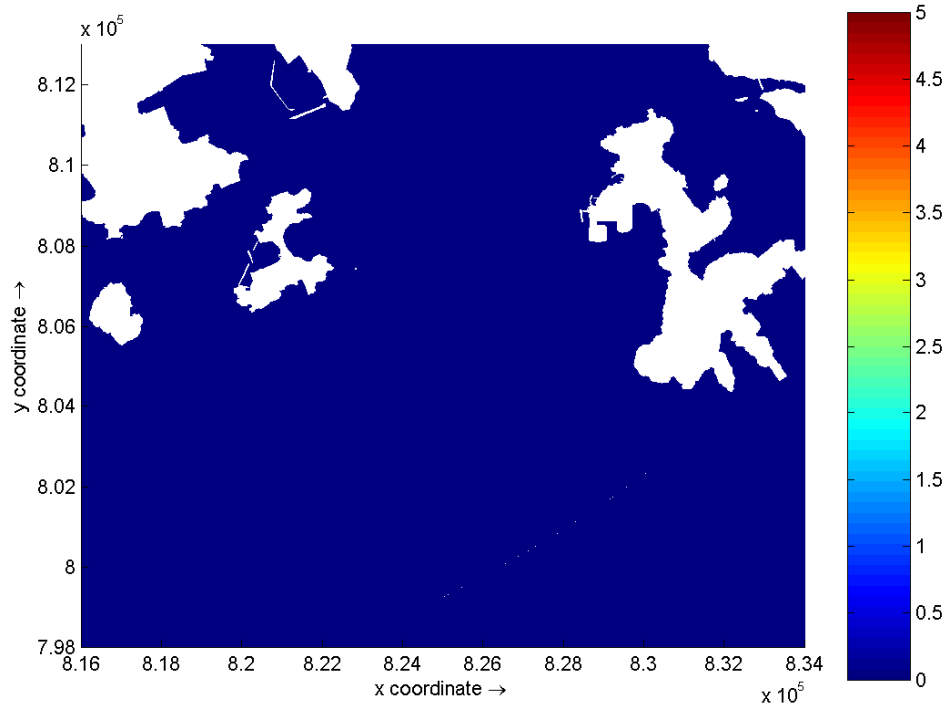




Dissolved Oxygen (mg/L) – maximum depth average depletion on Days 9 and 10
of Foundation Construction at Lamma Island
Dry Season

Environmental
Resources
Management

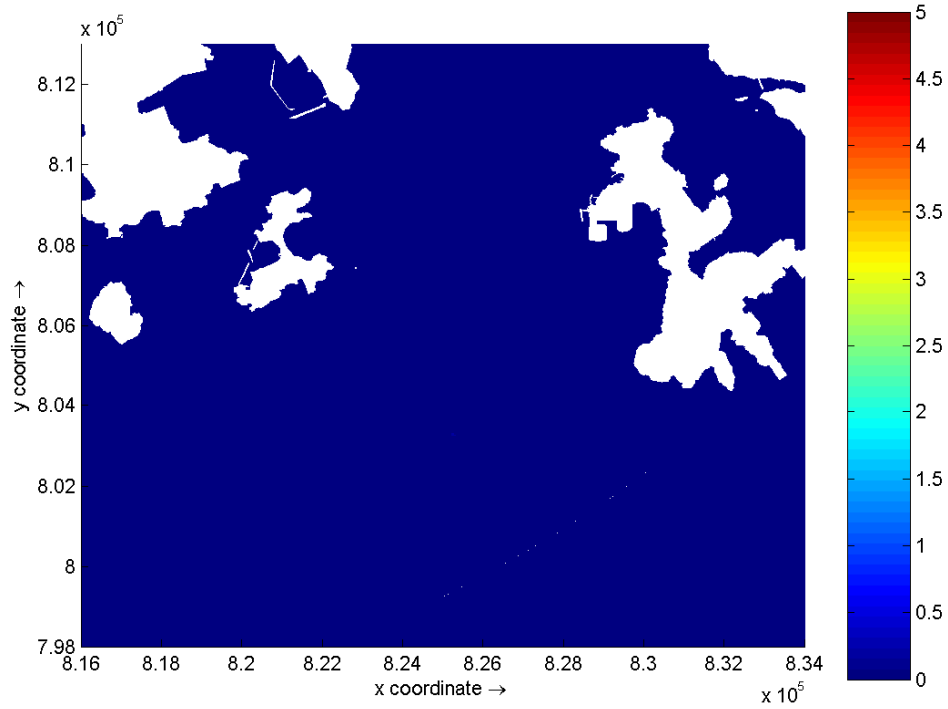
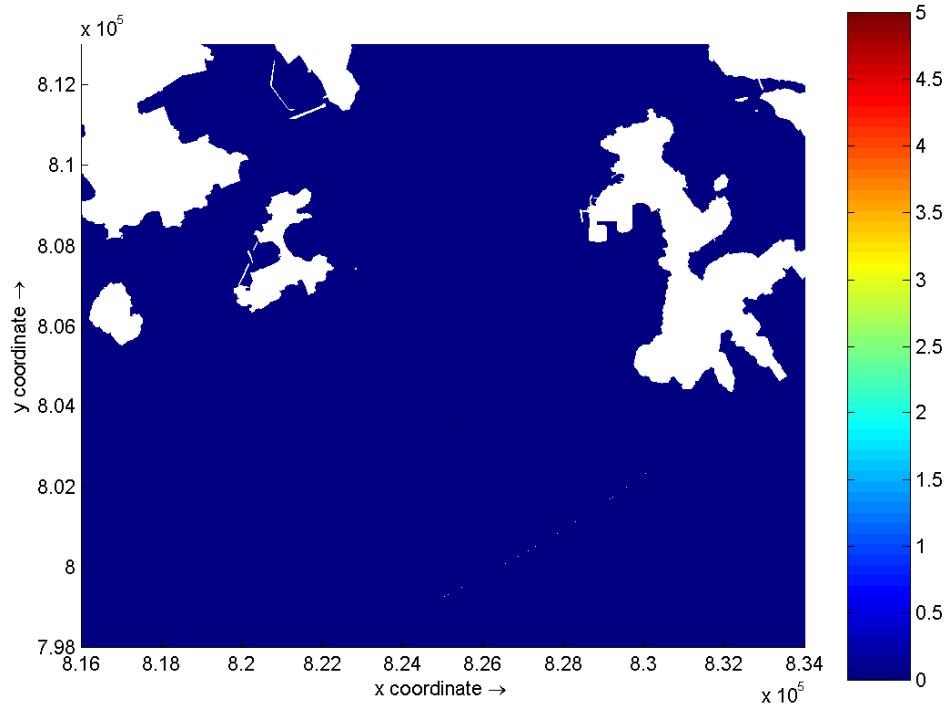




Dissolved Oxygen (mg/L) – maximum depth average depletion on Days 11 and 12 of Foundation Construction at Lamma Island
Dry Season

Environmental
Resources
Management

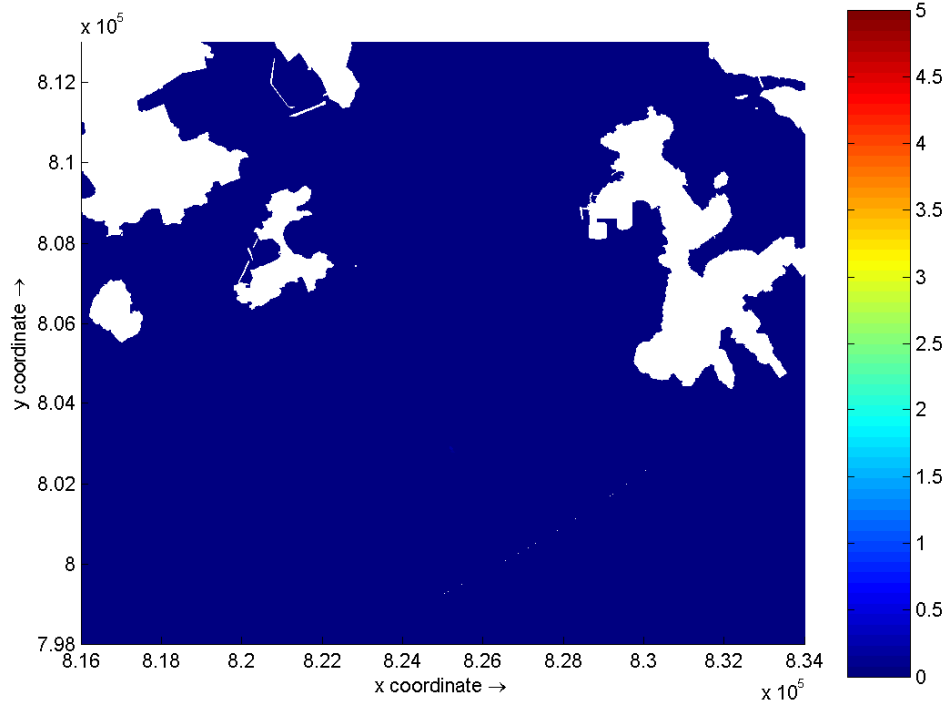




Dissolved Oxygen (mg/L) – maximum depth average depletion on Days 13 and 14 of Foundation Construction at Lamma Island
Dry Season

Environmental
Resources
Management

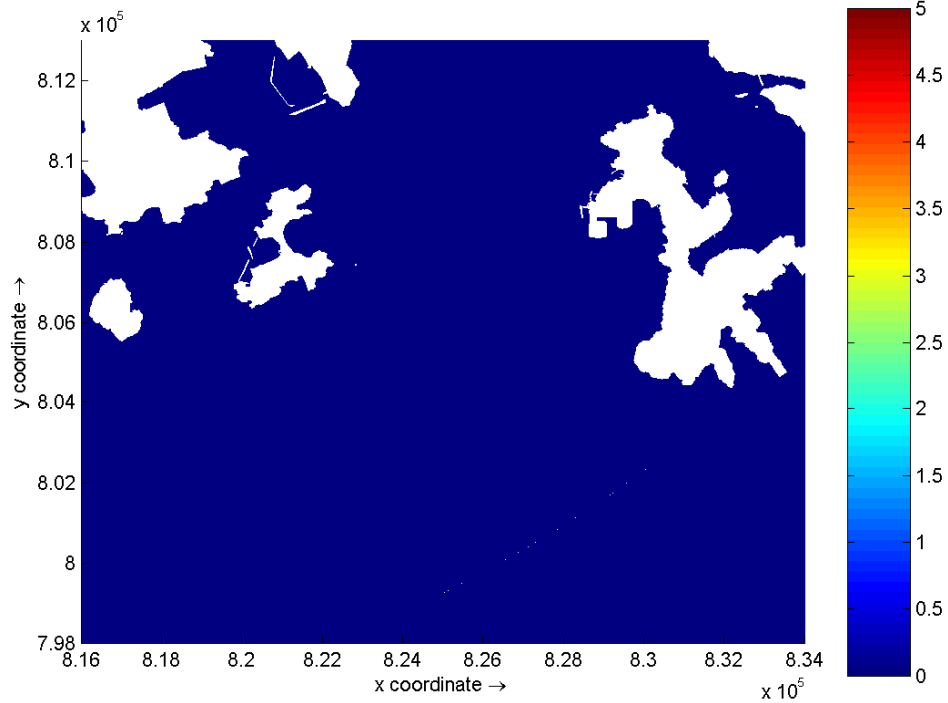
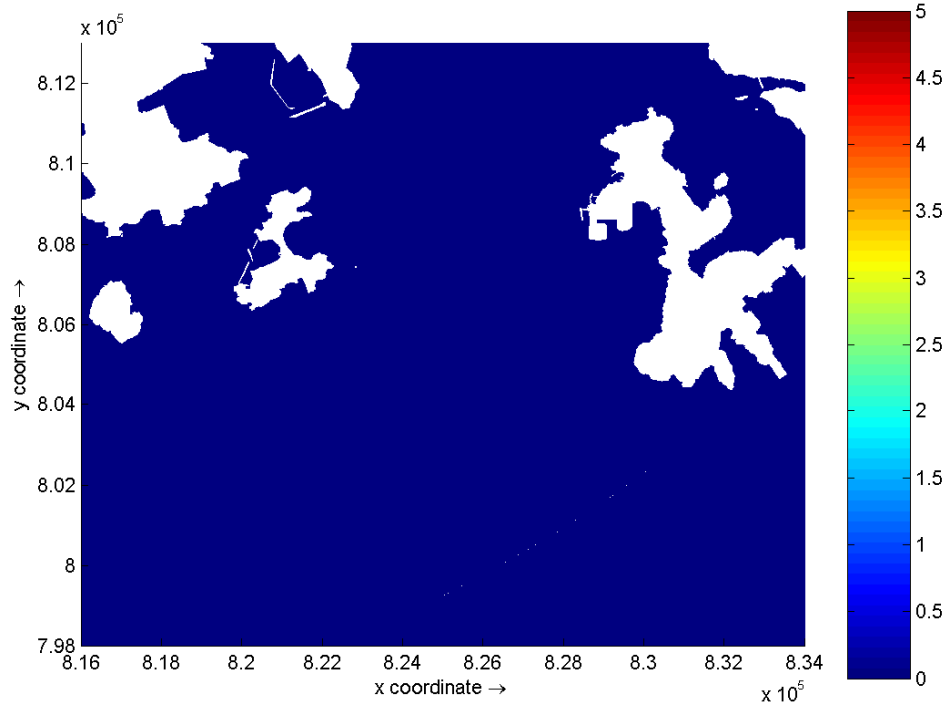




Dissolved Oxygen (mg/L) – maximum depth average depletion on Day 15 of
 Foundation Construction at Lamma Island
 Dry Season

**Environmental
 Resources
 Management**

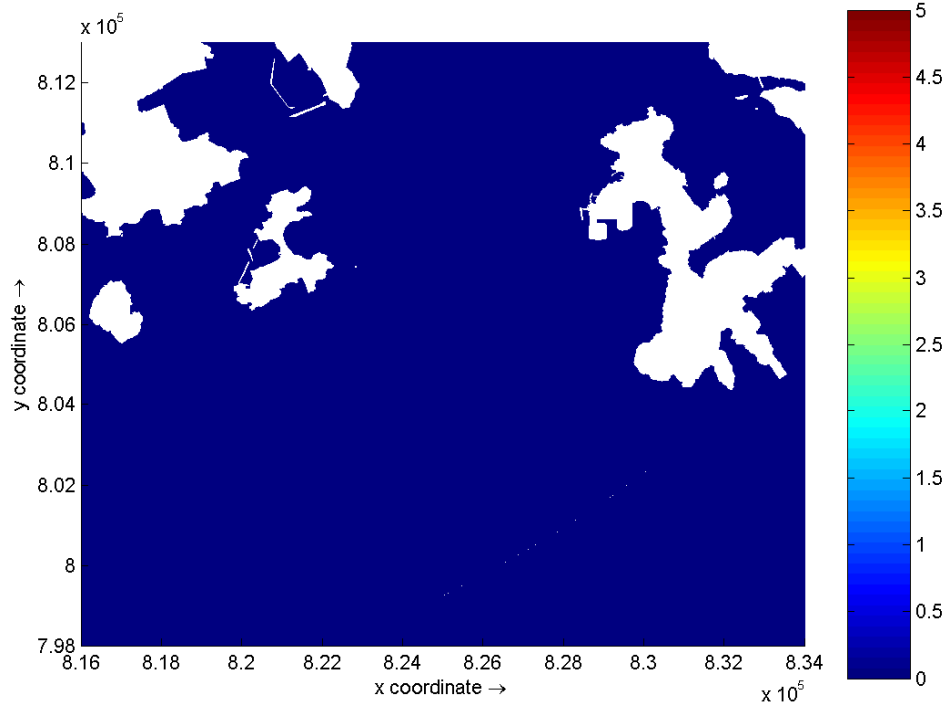
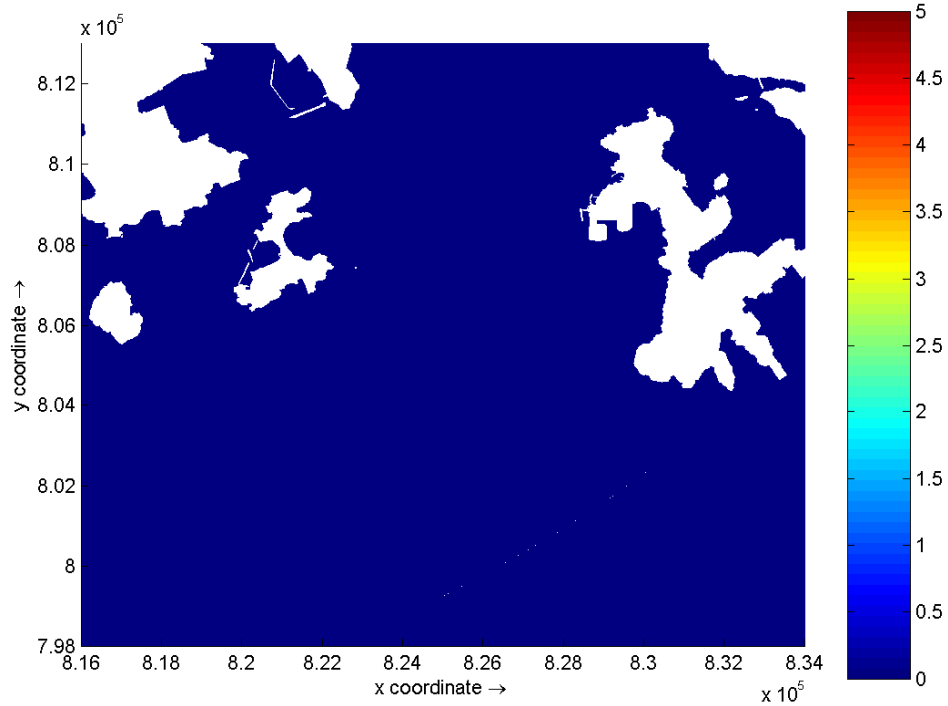




Dissolved Oxygen (mg/L) – maximum depth average depletion on Days 1 and 2 of
 Foundation Construction at Lamma Island
 Wet Season

Environmental
 Resources
 Management

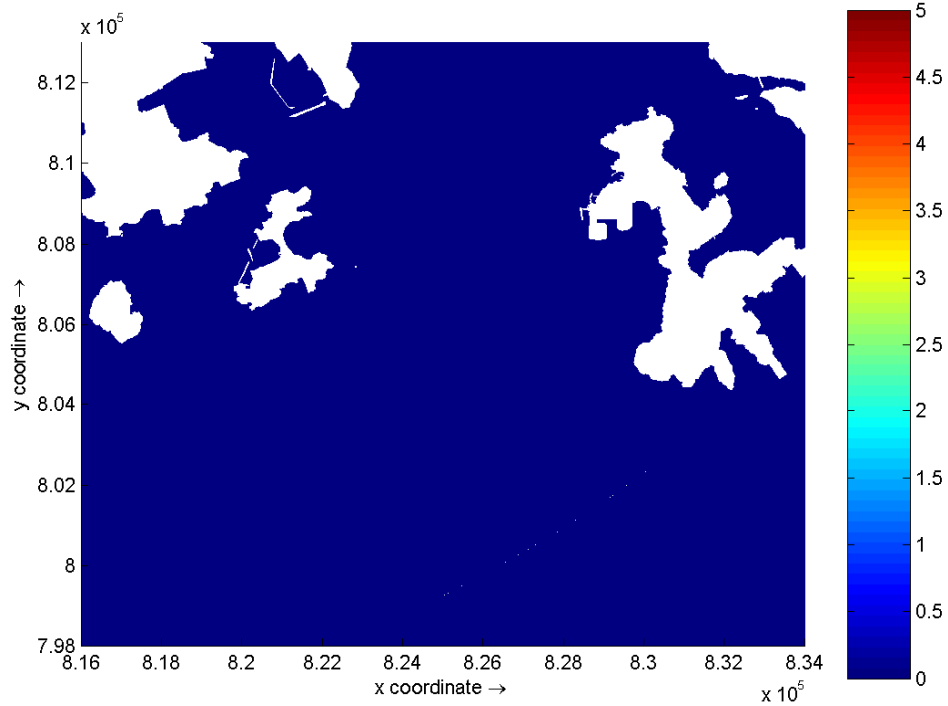
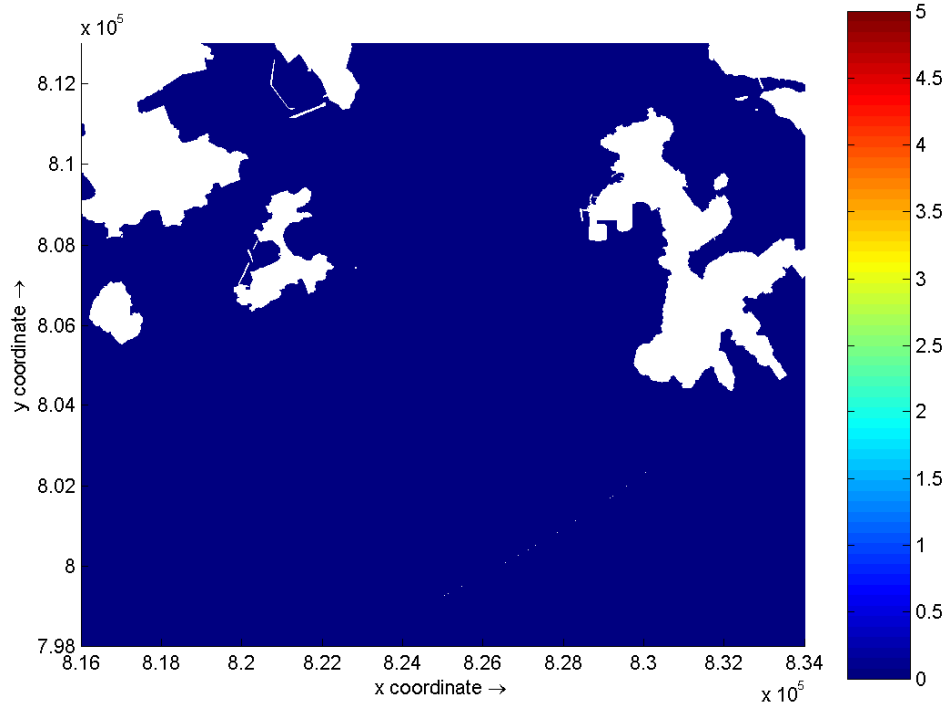




Dissolved Oxygen (mg/L) – maximum depth average depletion on Days 3 and 4 of
 Foundation Construction at Lamma Island
 Wet Season

Environmental
 Resources
 Management

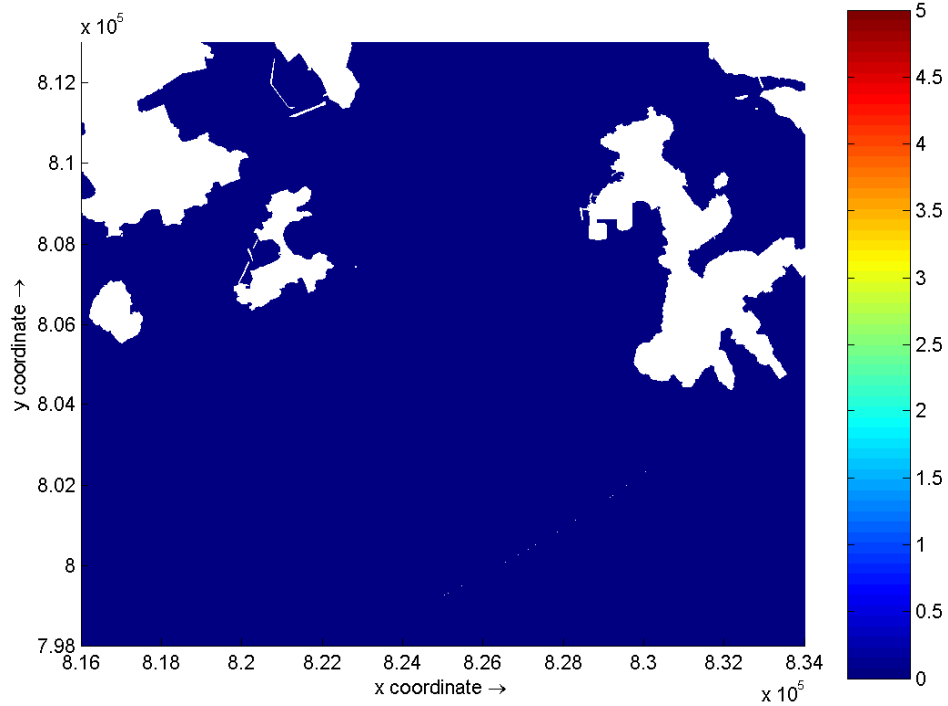
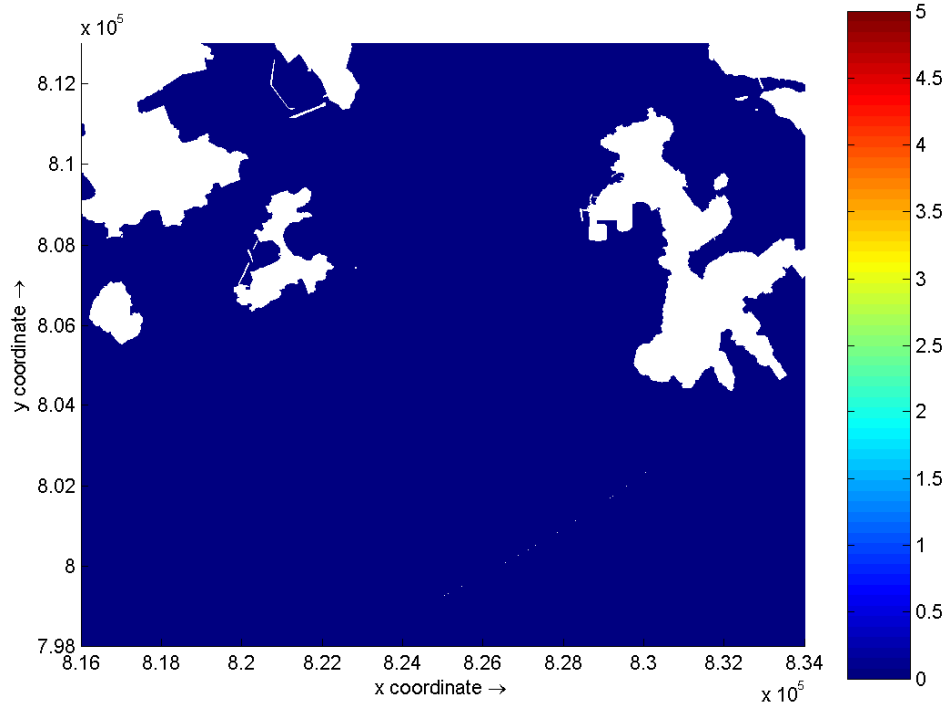




Dissolved Oxygen (mg/L) – maximum depth average depletion on Days 5 and 6 of
 Foundation Construction at Lamma Island
 Wet Season

Environmental
 Resources
 Management

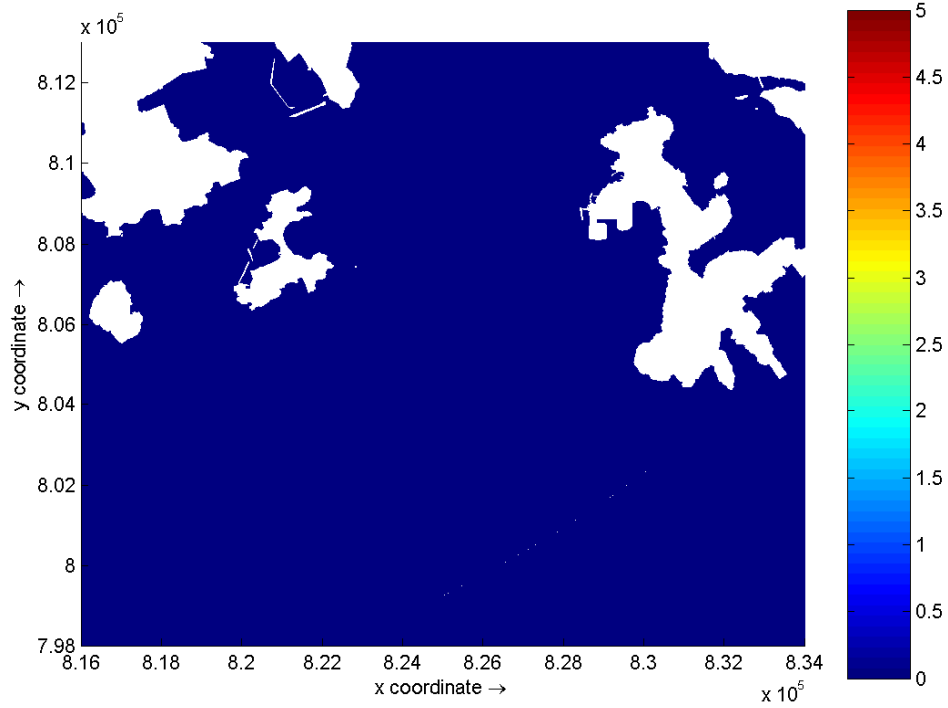
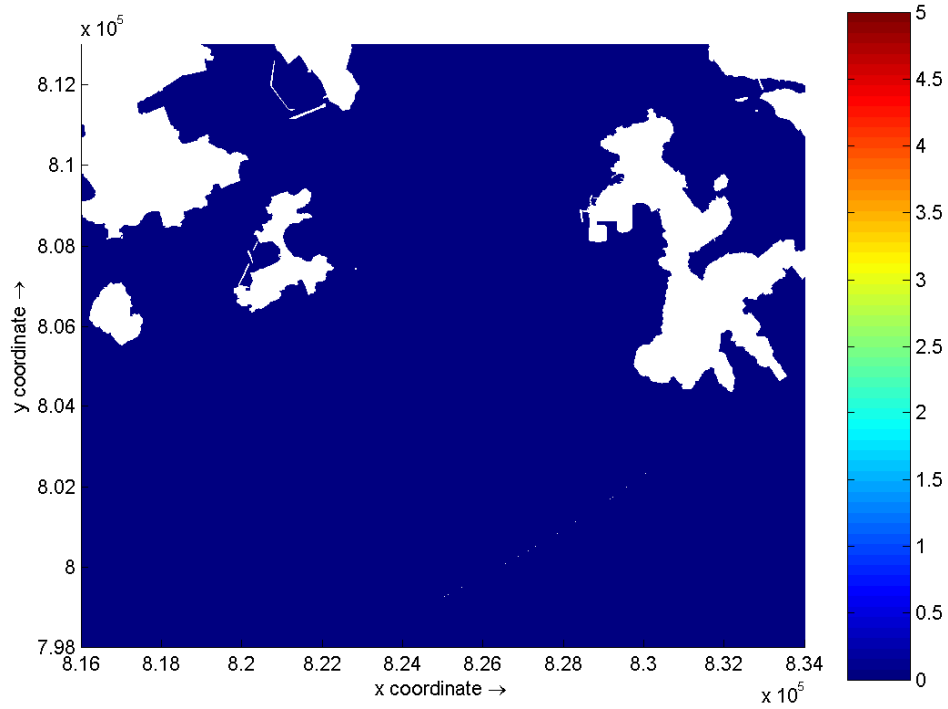




Dissolved Oxygen (mg/L) – maximum depth average depletion on Days 7 and 8 of
 Foundation Construction at Lamma Island
 Wet Season

Environmental
 Resources
 Management

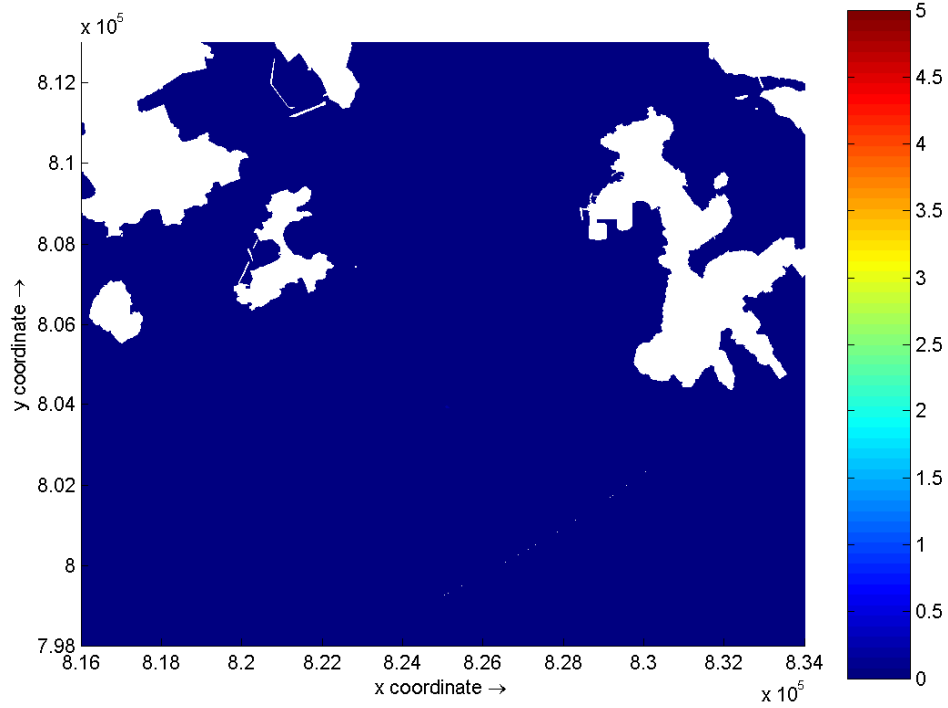
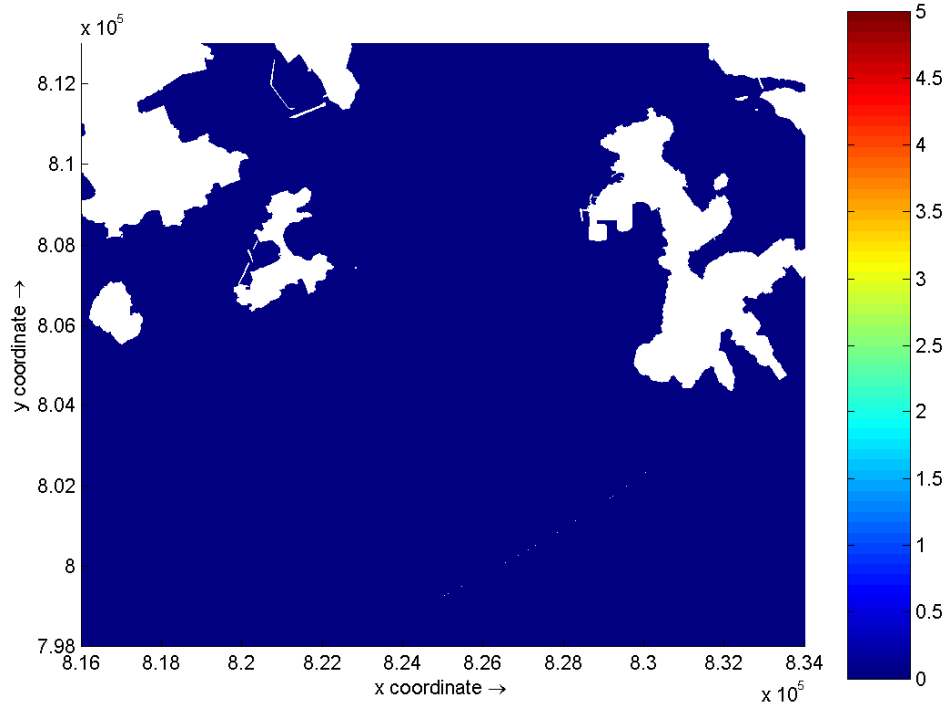




Dissolved Oxygen (mg/L) – maximum depth average depletion on Days 9 and 10 of Foundation Construction at Lamma Island
Wet Season

Environmental
Resources
Management

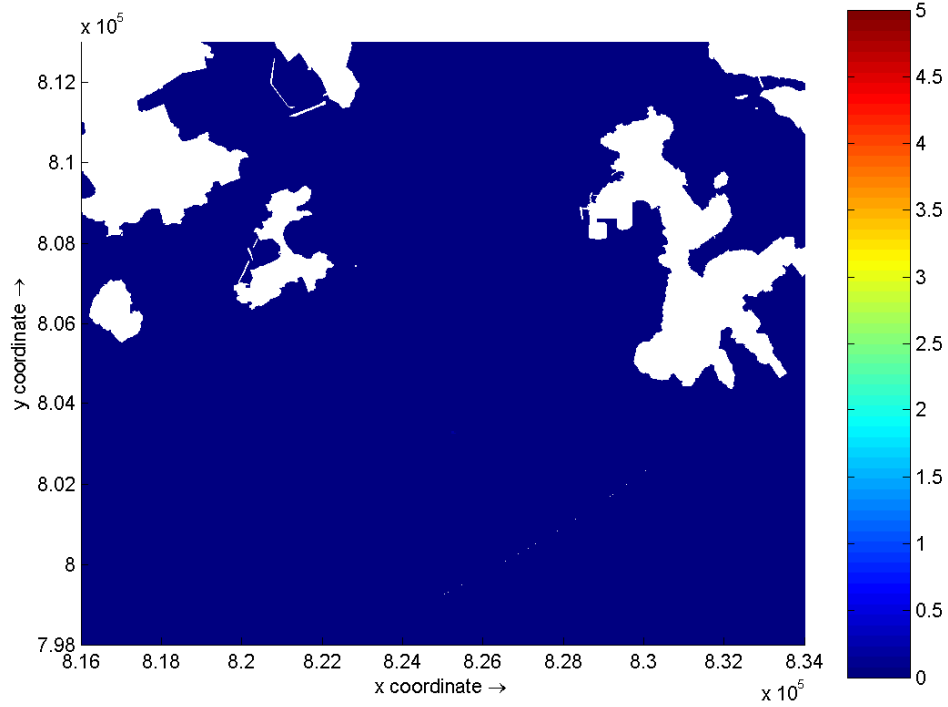
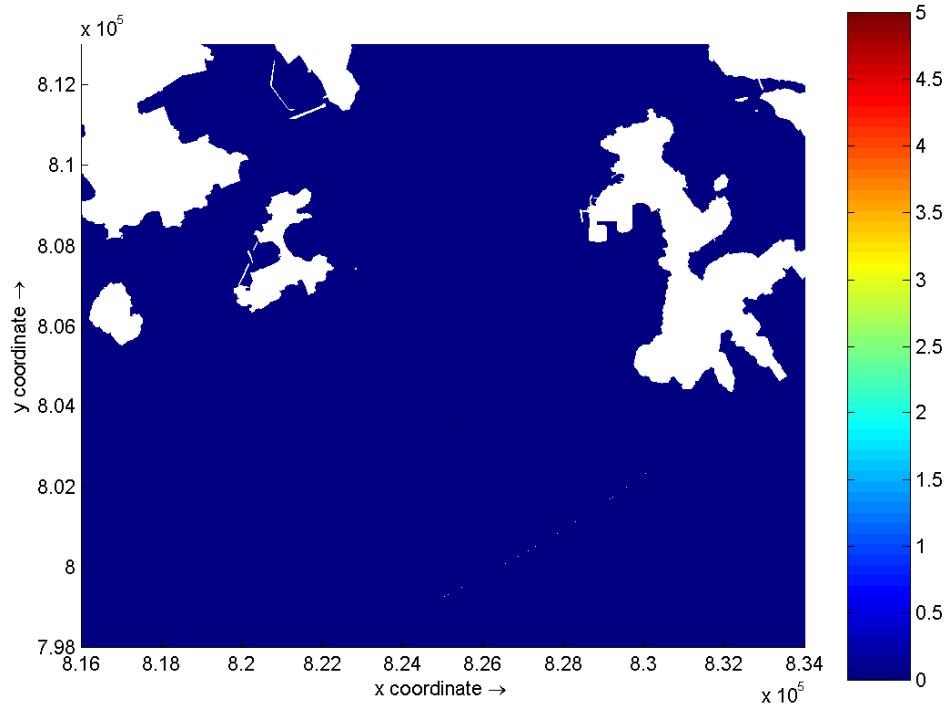




Dissolved Oxygen (mg/L) – maximum depth average depletion on Days 11 and 12
of Foundation Construction at Lamma Island
Wet Season

Environmental
Resources
Management

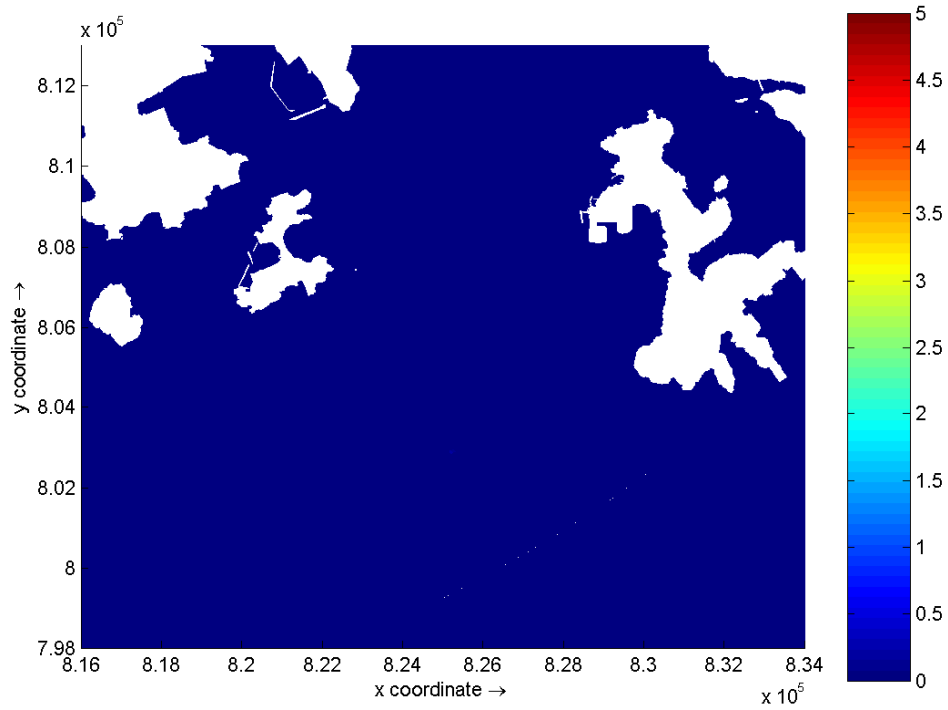




Dissolved Oxygen (mg/L) – maximum depth average depletion on Days 13 and 14
of Foundation Construction at Lamma Island
Wet Season

Environmental
Resources
Management





Dissolved Oxygen (mg/L) – maximum depth average depletion on Day 15 of
 Foundation Construction at Lamma Island
 Wet Season

**Environmental
 Resources
 Management**



