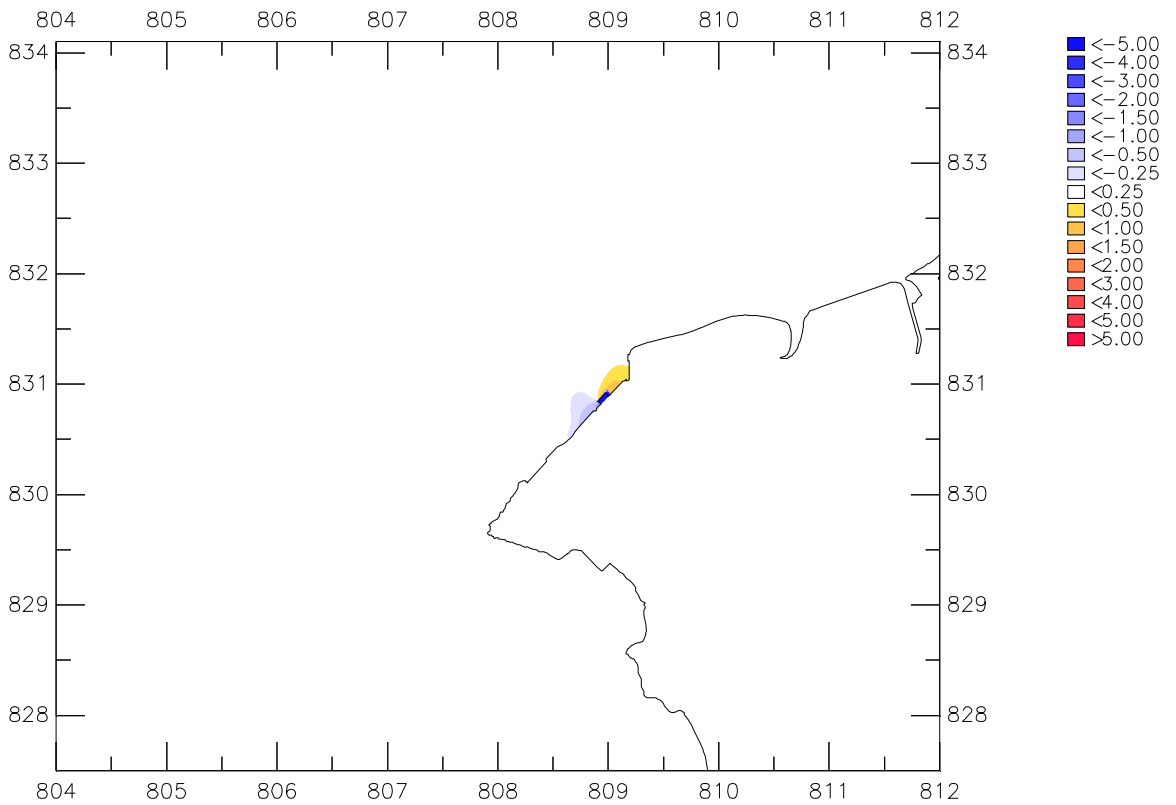
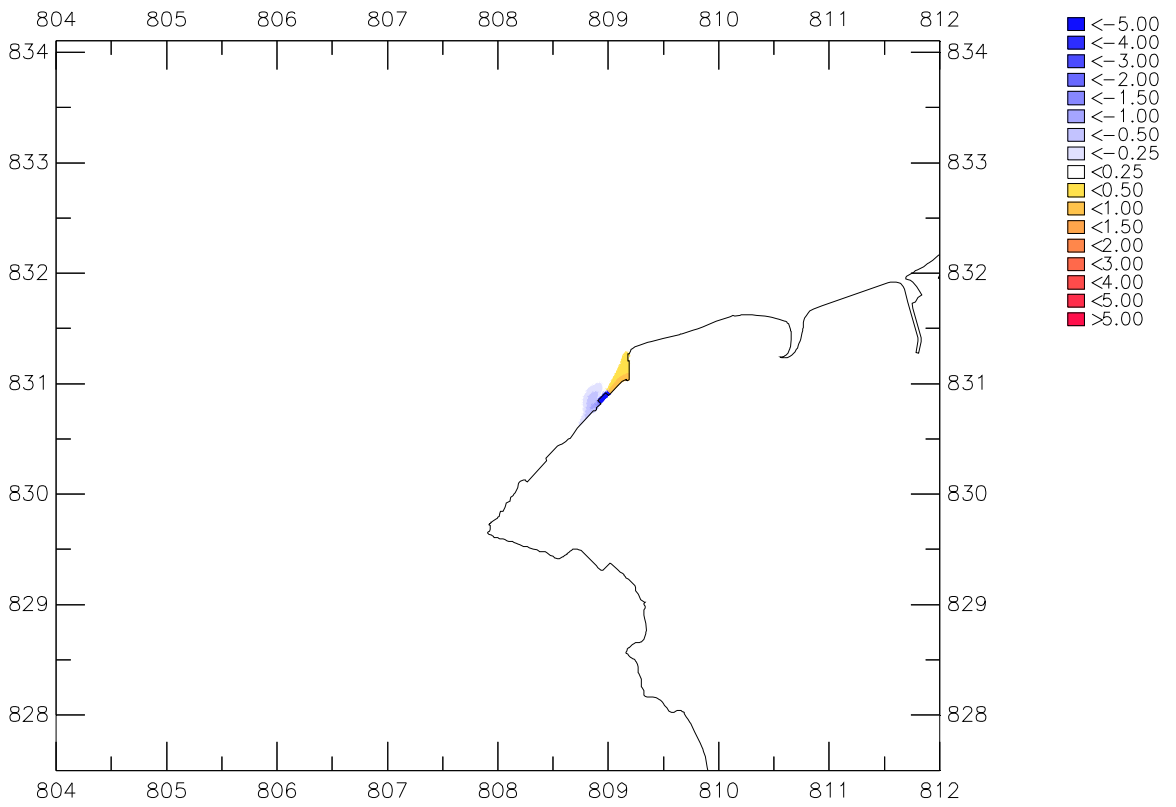
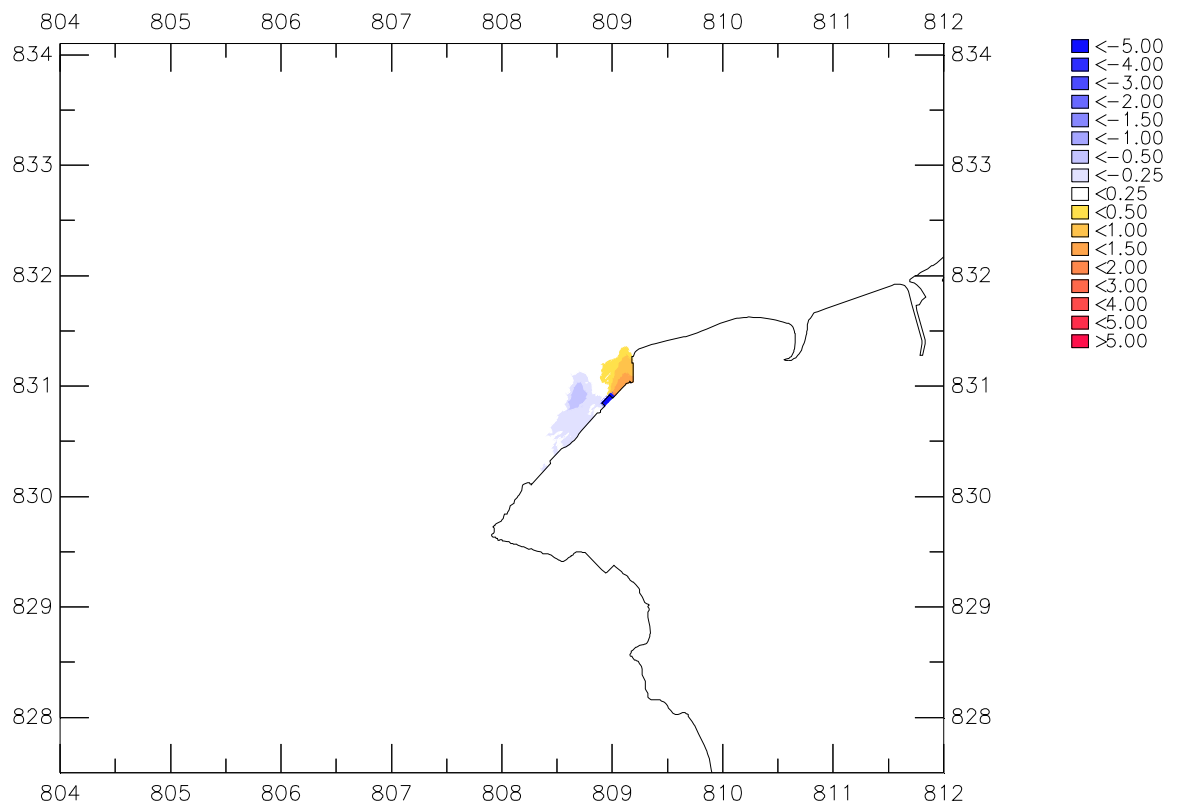
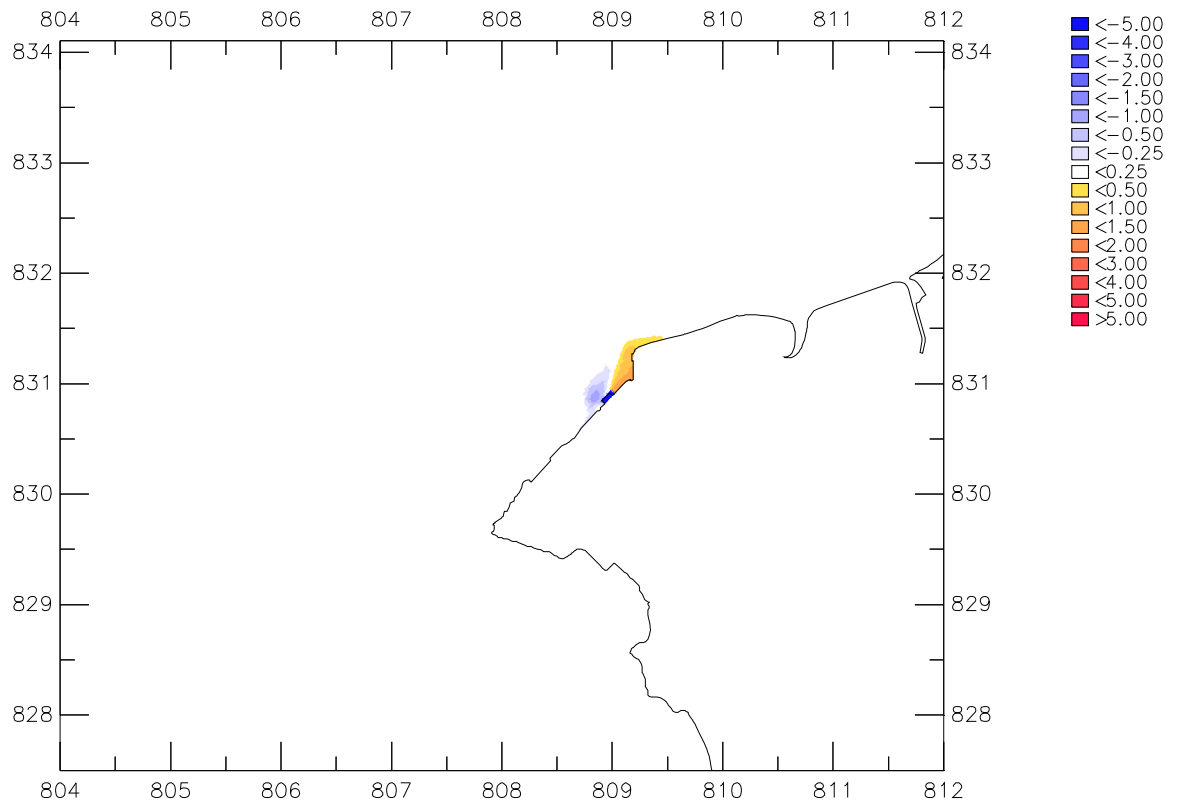


Annex 6G

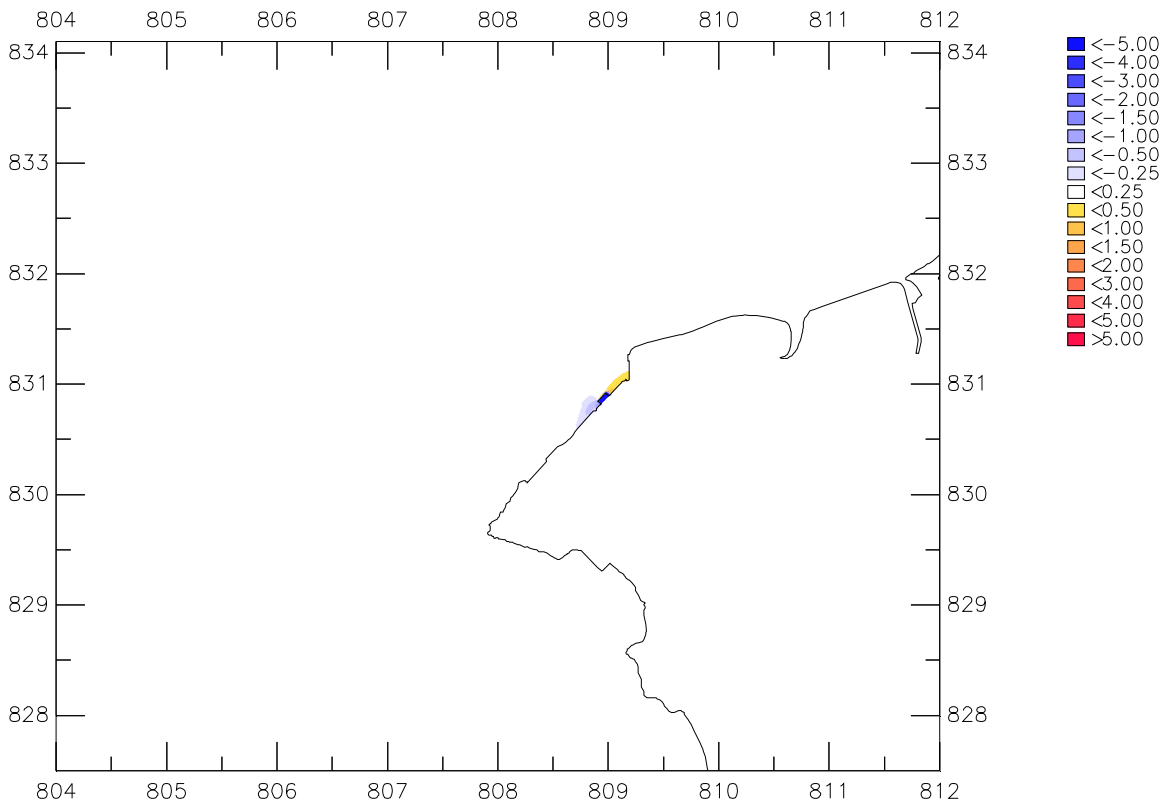
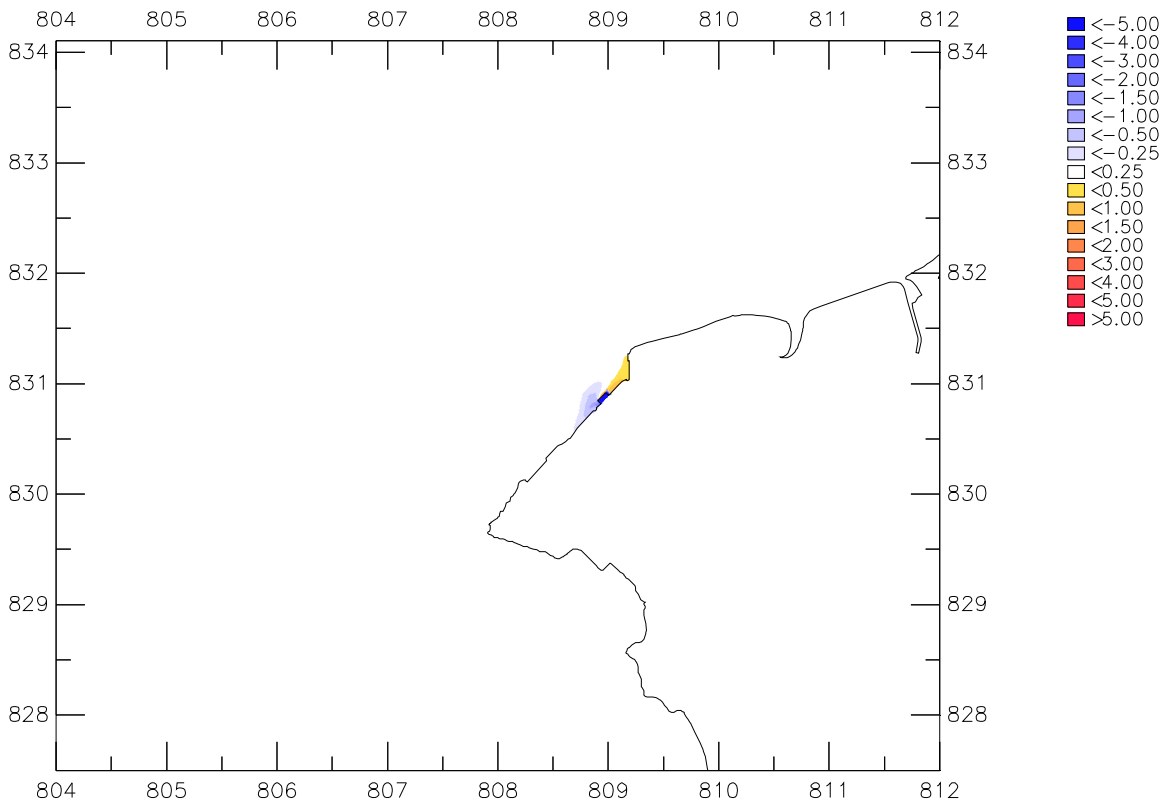
Model Results for Second Phase Operation Scenario (Water Quality)



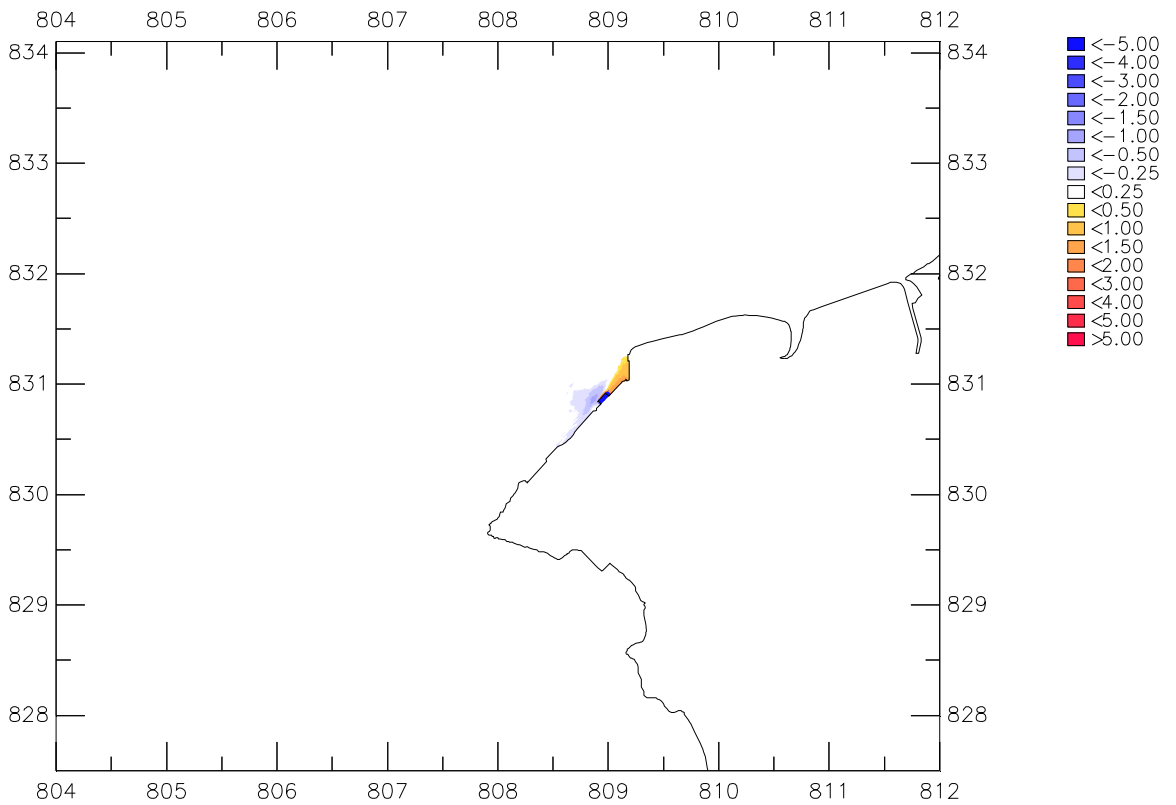
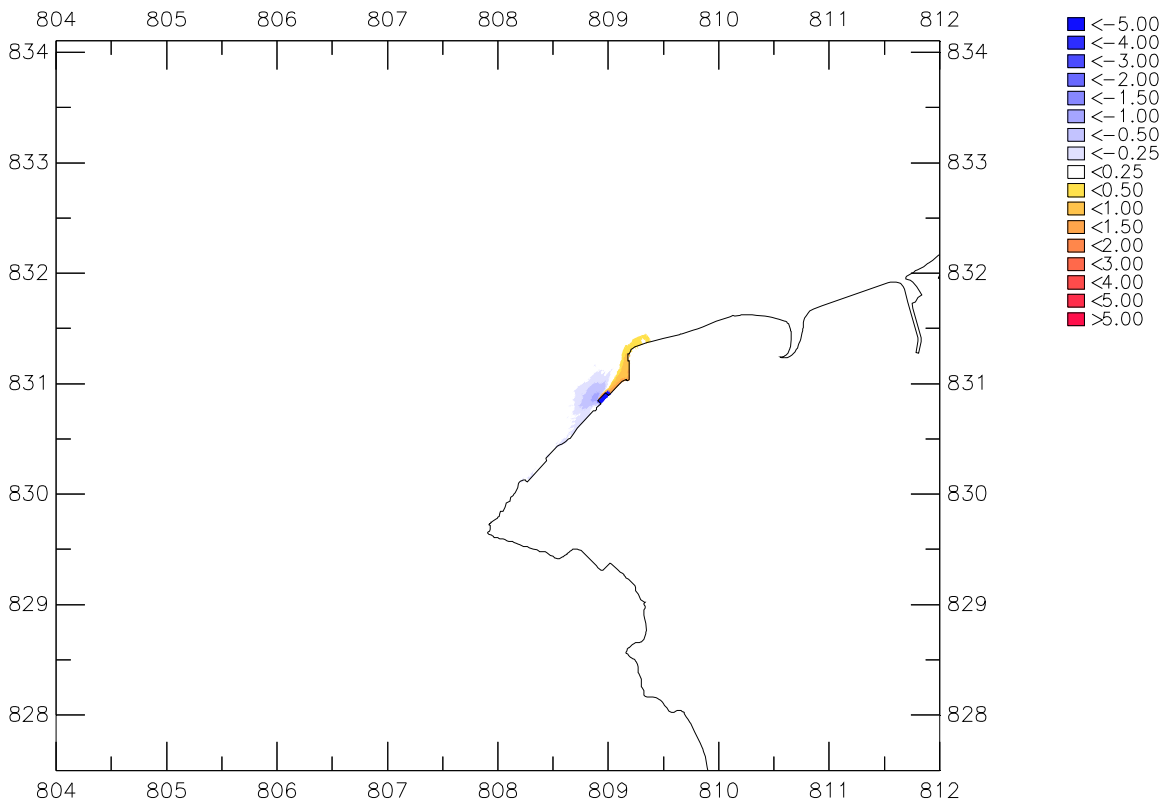
Impact of GRS case 2
 Diss.oxygen (mg/L), mean in bottom layer
 Top: dry season, Bot: wet season



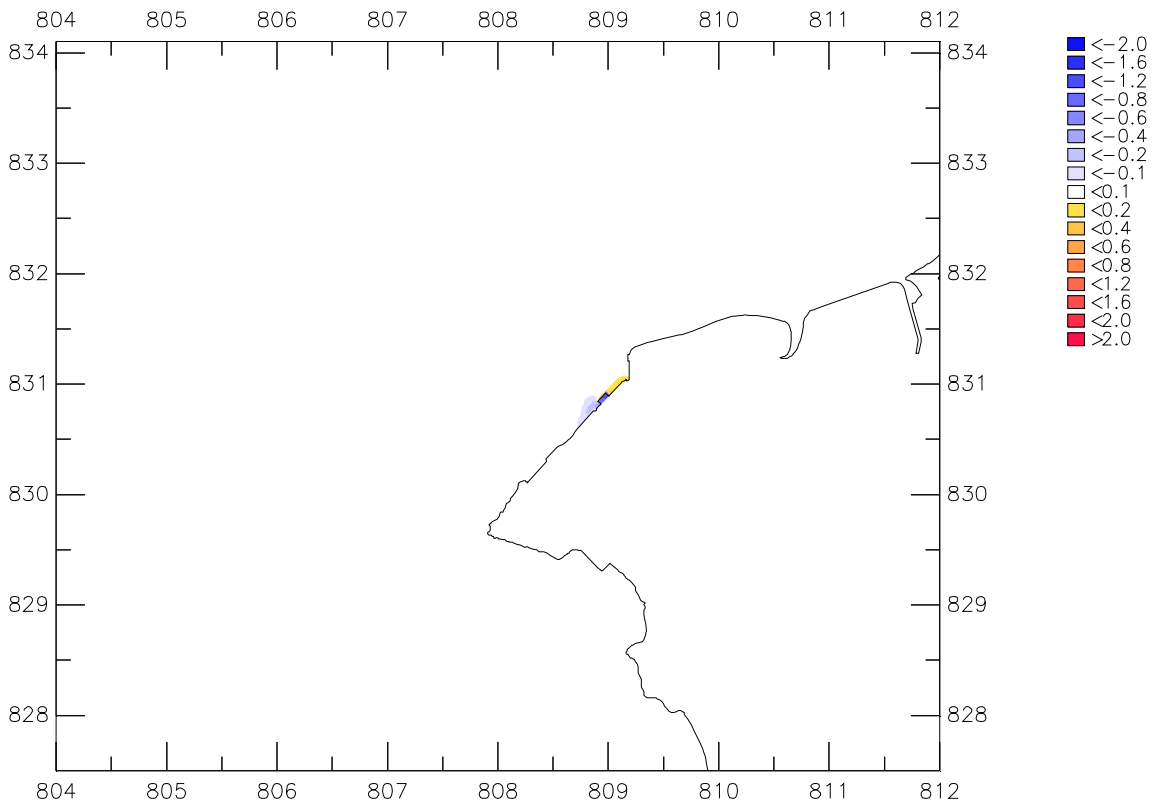
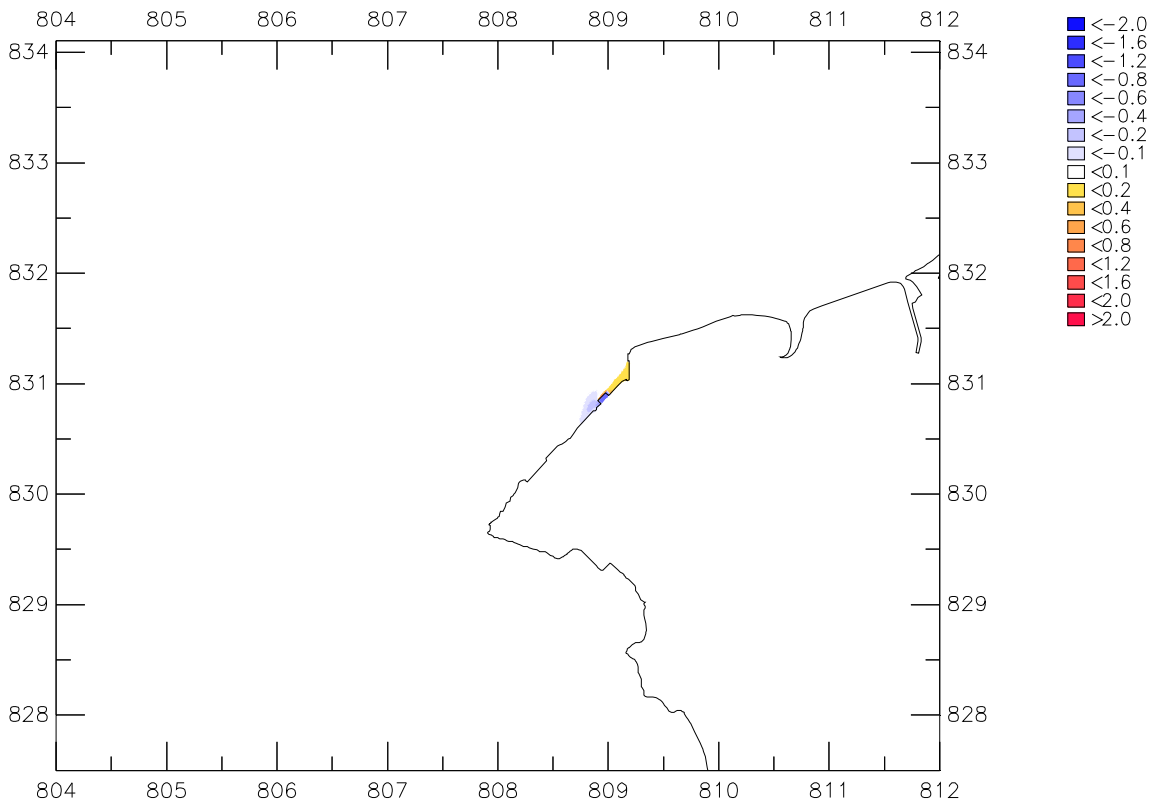
Impact of GRS case 2
 Diss.oxygen (mg/L), 10% in bottom layer
 Top: dry season, Bot: wet season



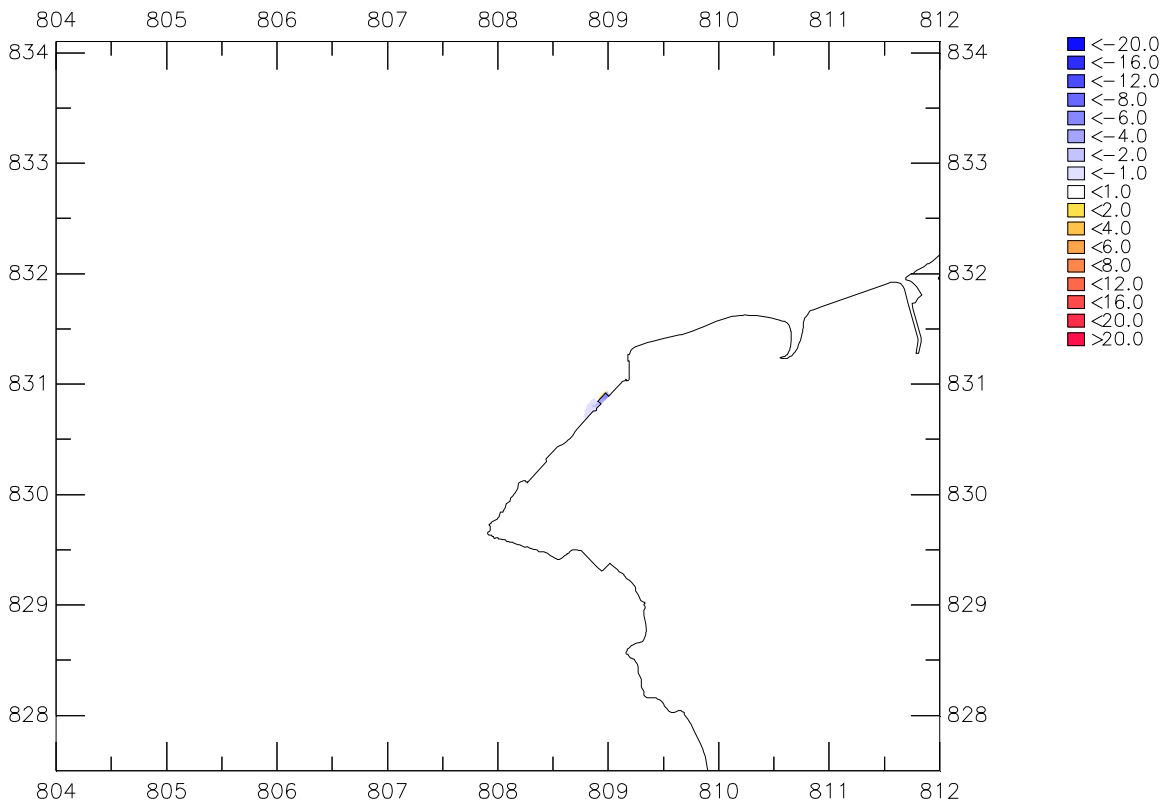
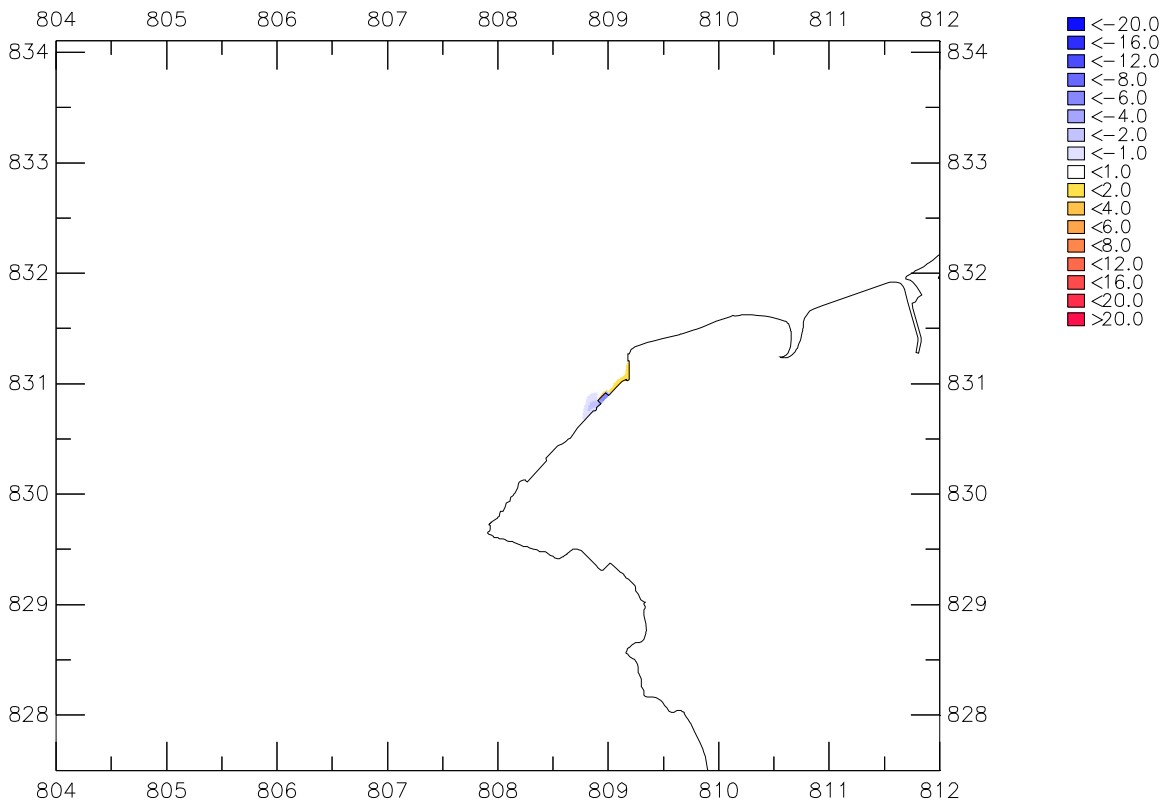
Impact of GRS case 2
 Diss.oxygen (mg/L), mean depth average
 Top: dry season, Bot: wet season



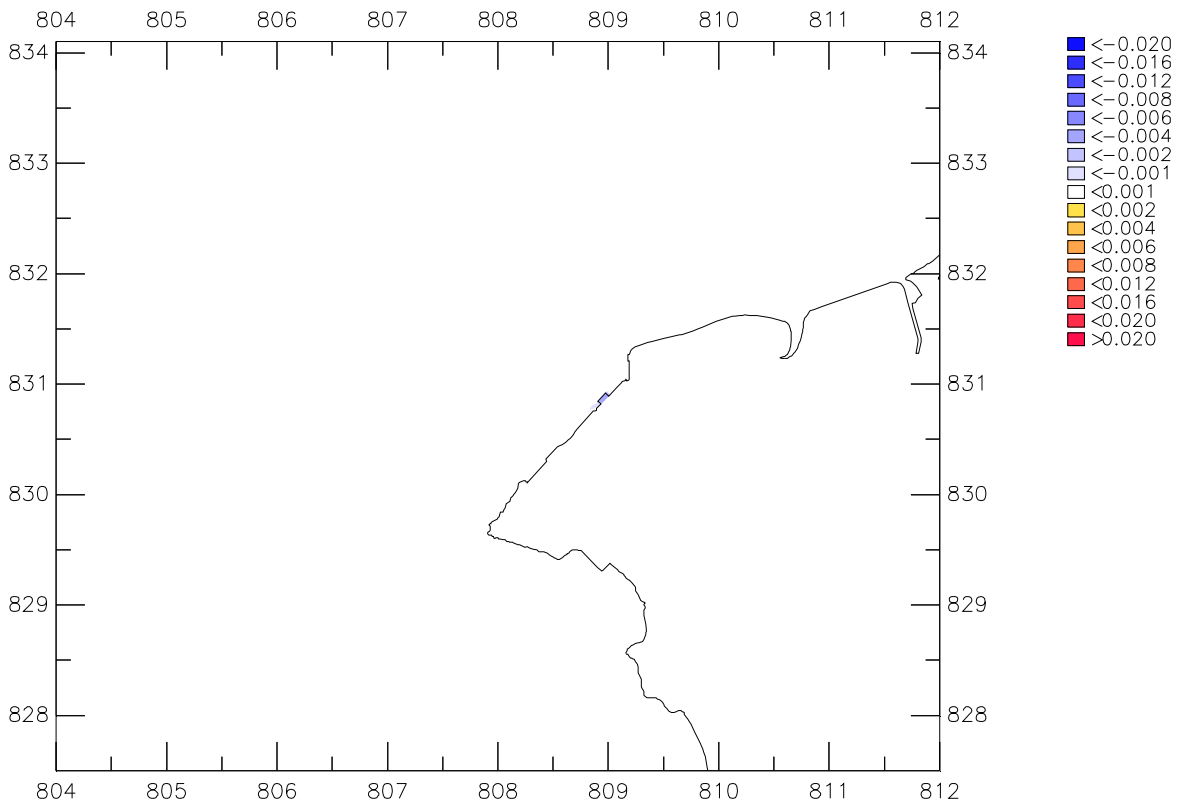
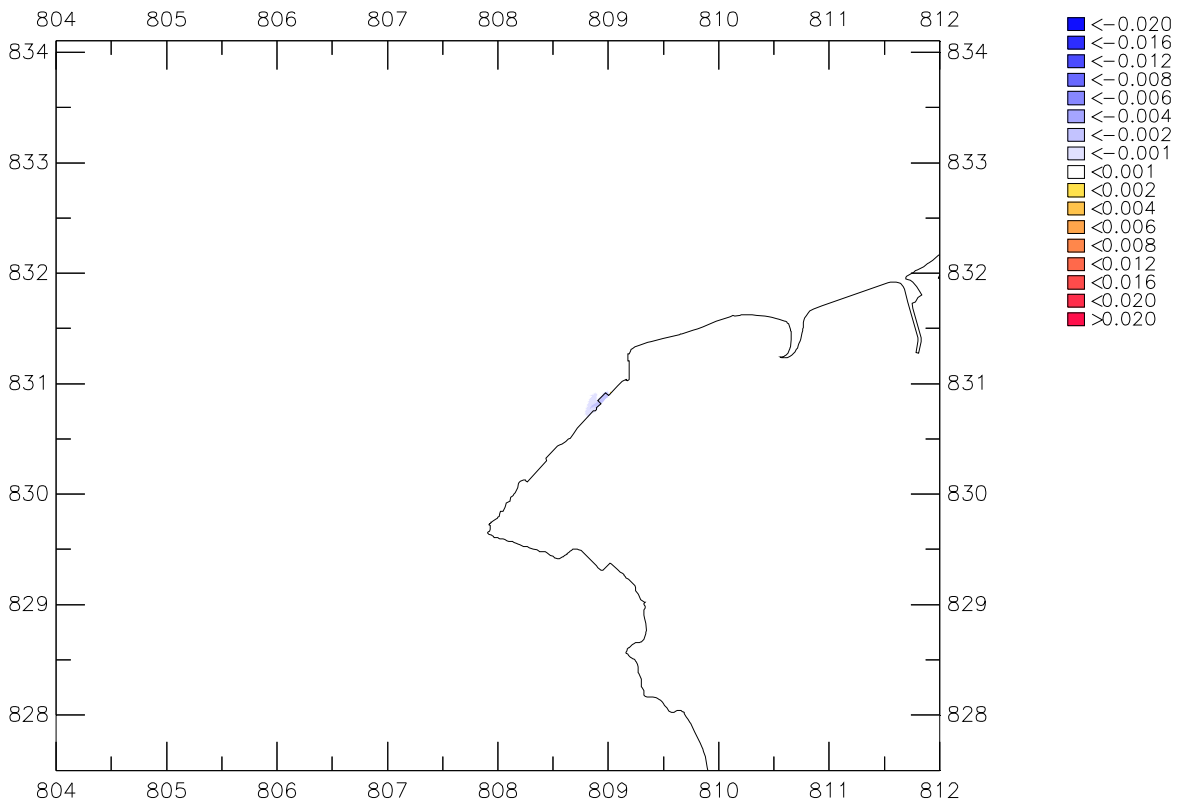
Impact of GRS case 2
 Diss.oxygen (mg/L), 10% depth average
 Top: dry season, Bot: wet season



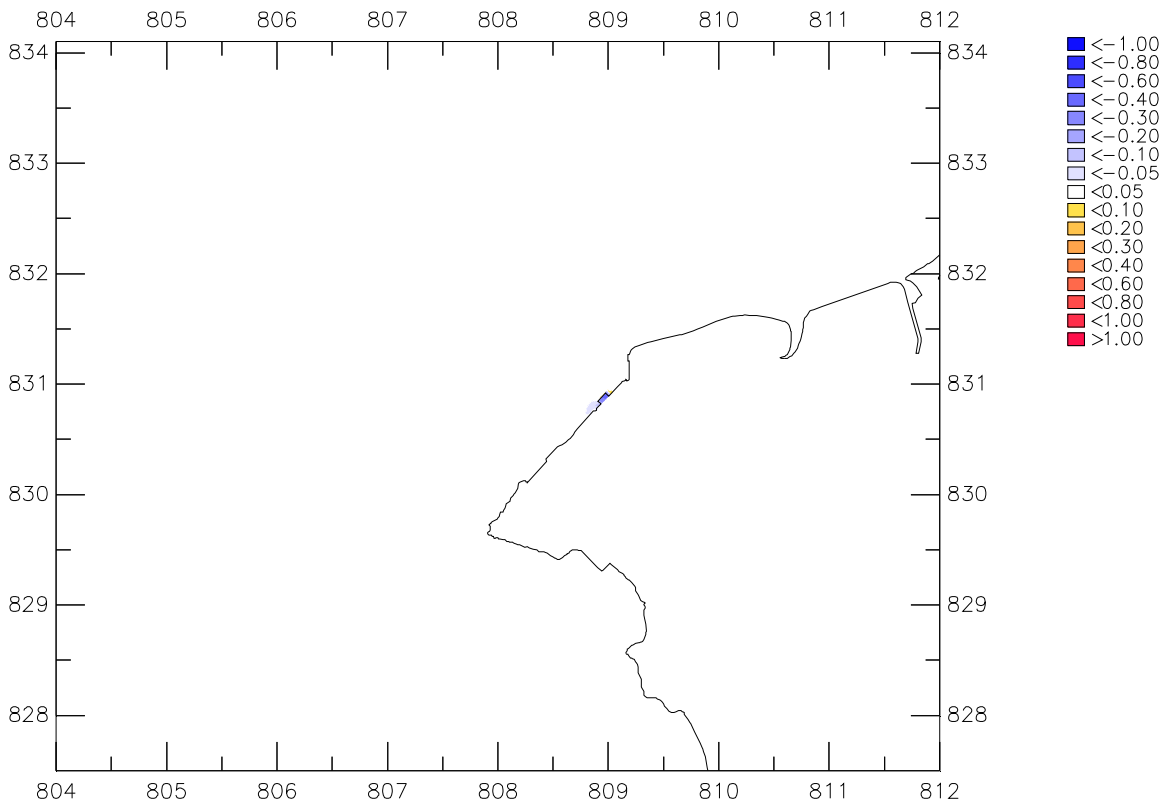
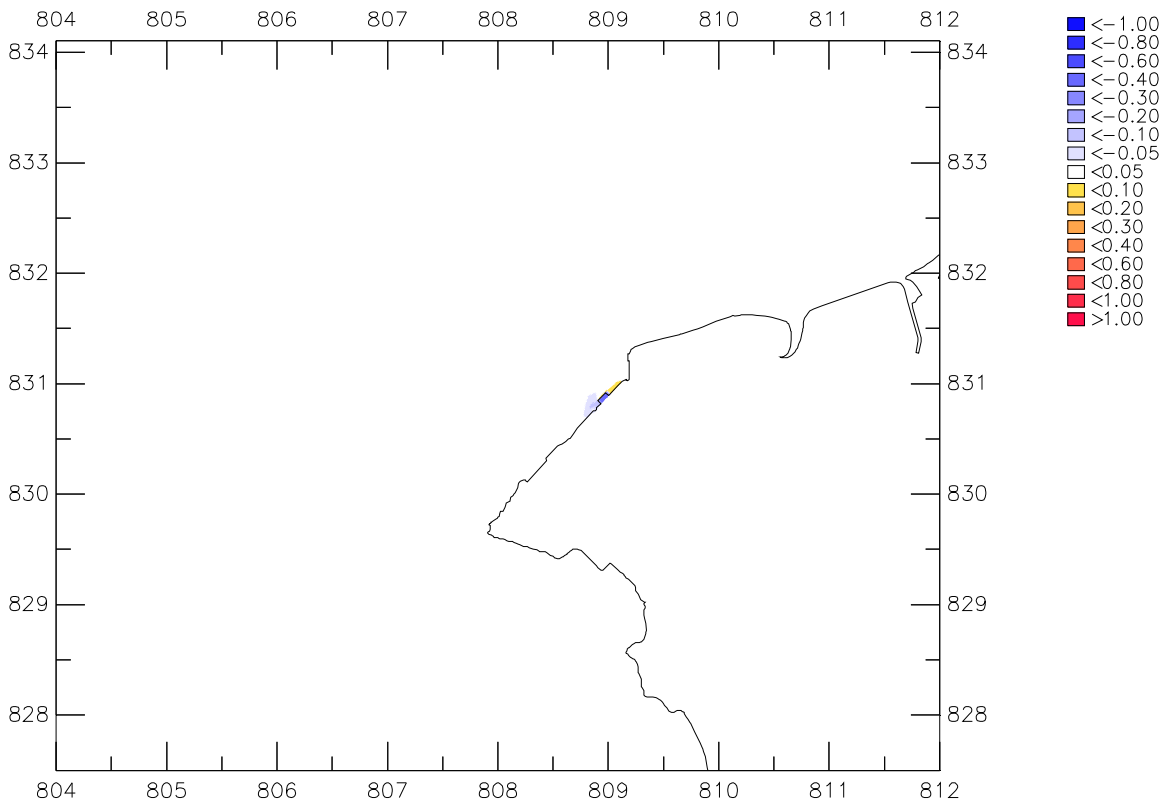
Impact of GRS case 2
 BOD5 (mg/L), mean depth average
 Top: dry season, Bot: wet season



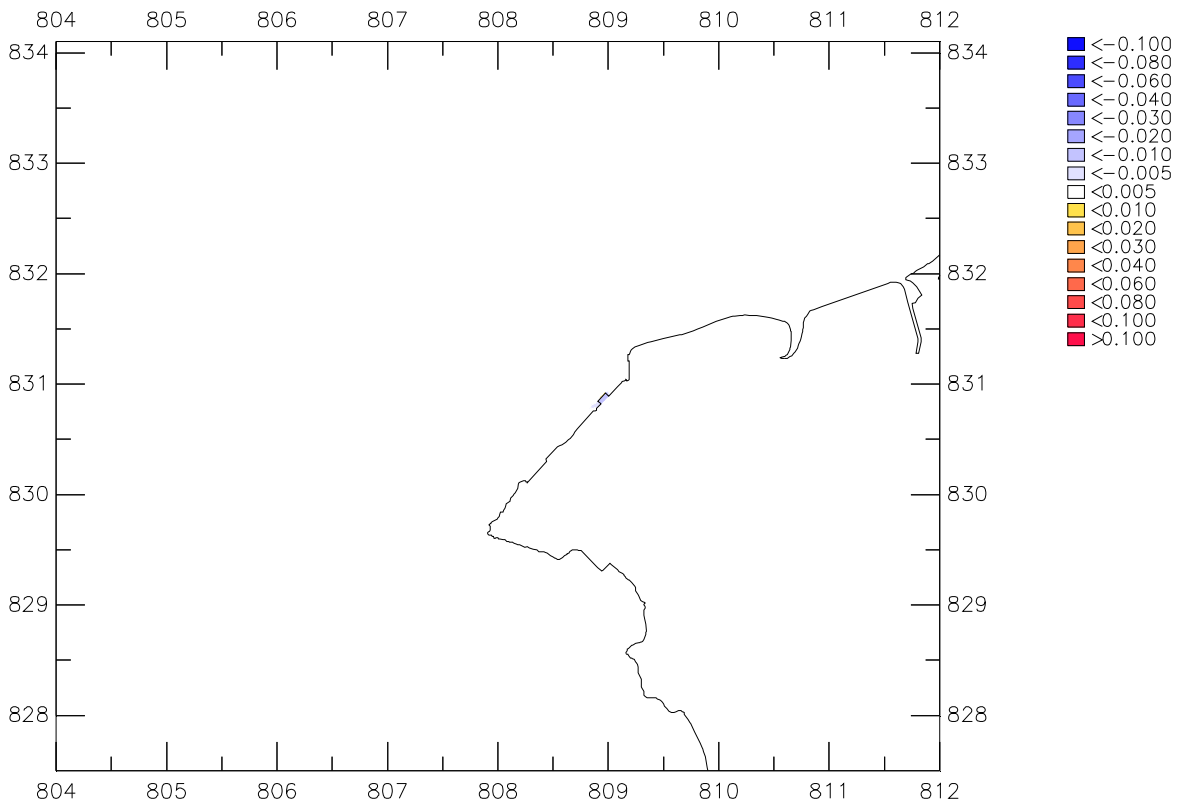
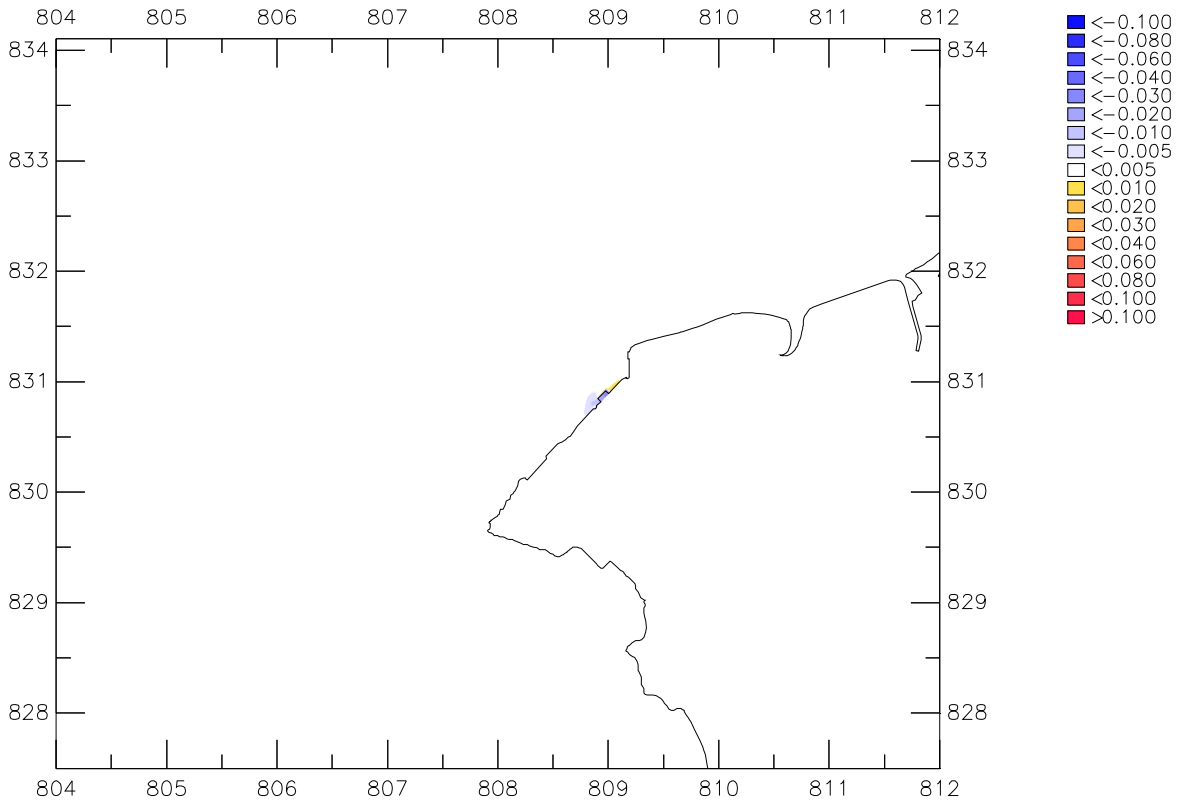
Impact of GRS case 2
 SS (mg/L), mean depth average
 Top: dry season, Bot: wet season



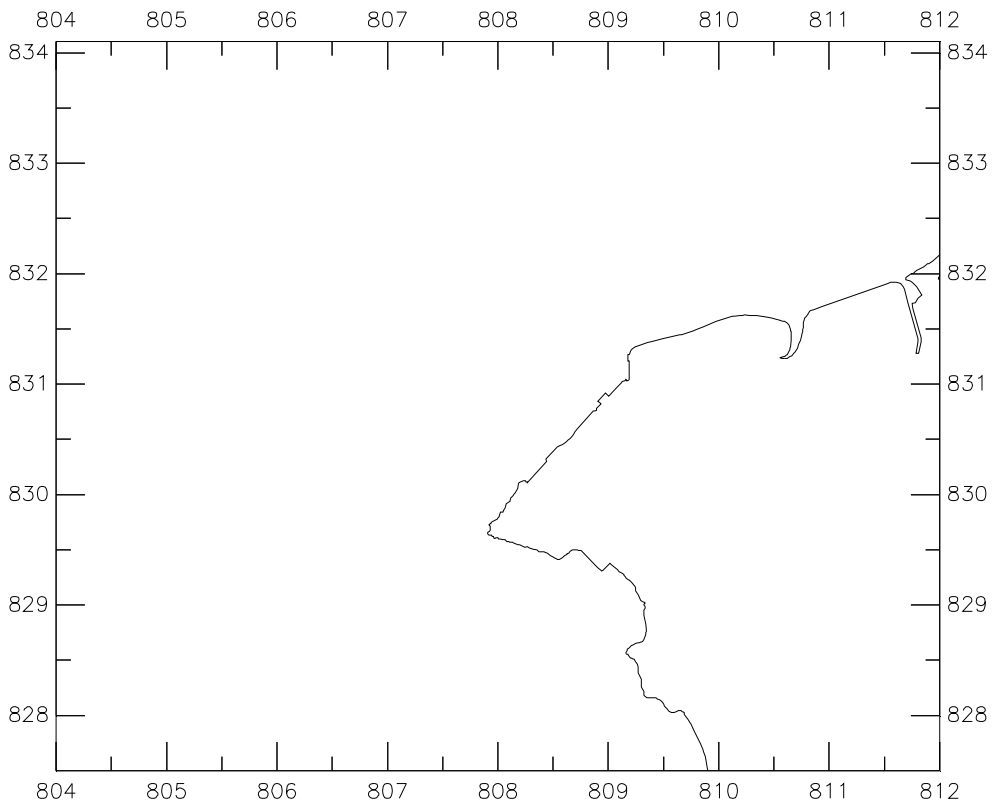
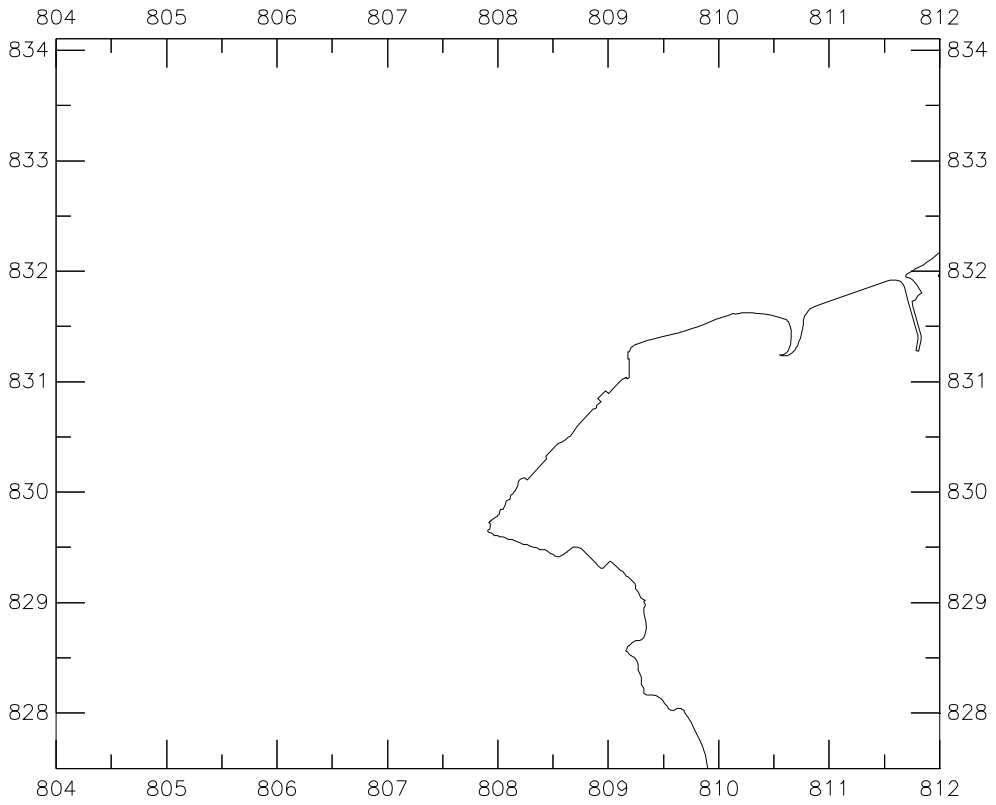
Impact of GRS case 2
 Unionised NH₃ (mg/L), mean depth average
 Top: dry season, Bot: wet season



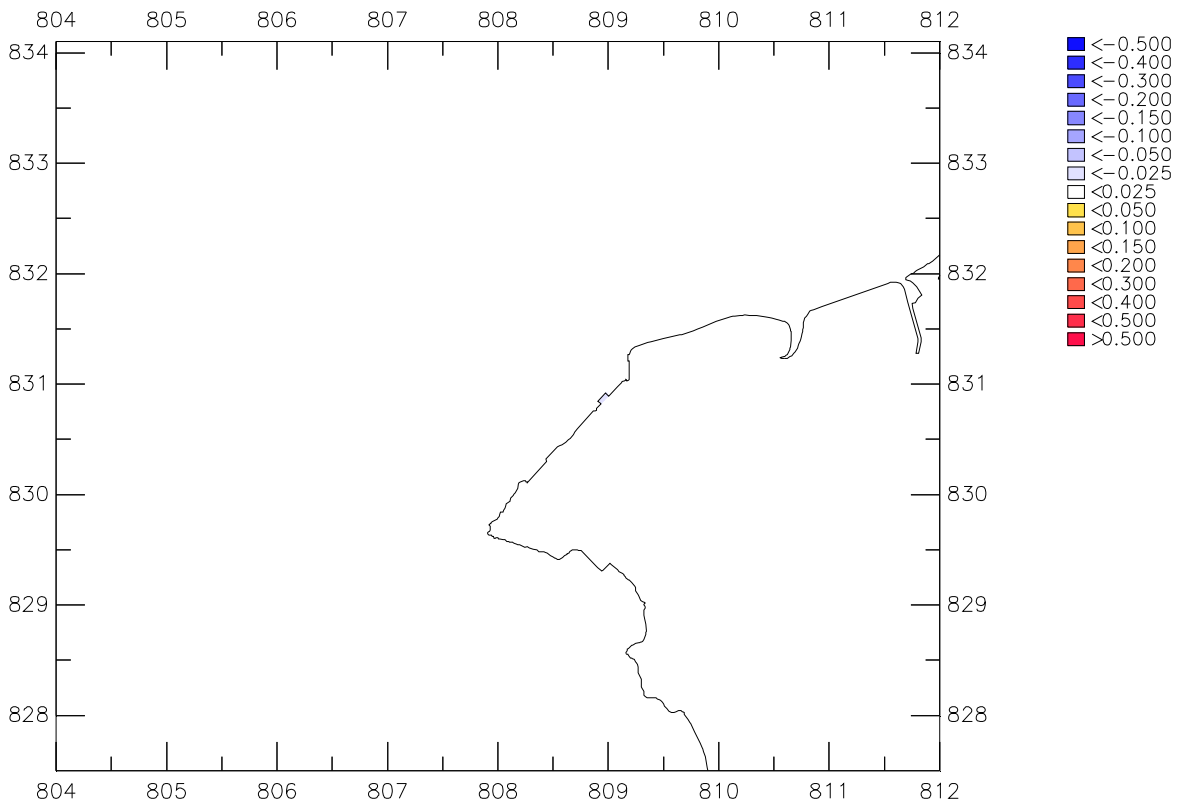
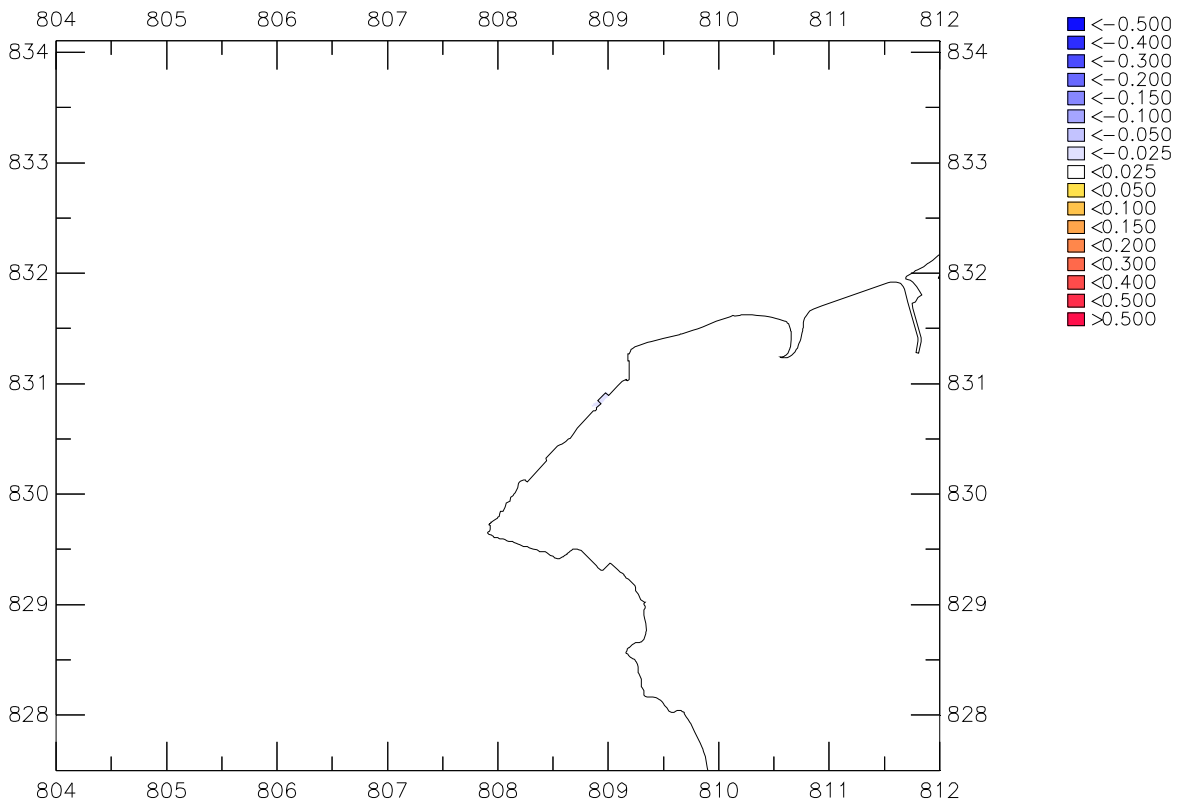
Impact of GRS case 2
 Total Nitrogen (mg/L), mean depth average
 Top: dry season, Bot: wet season



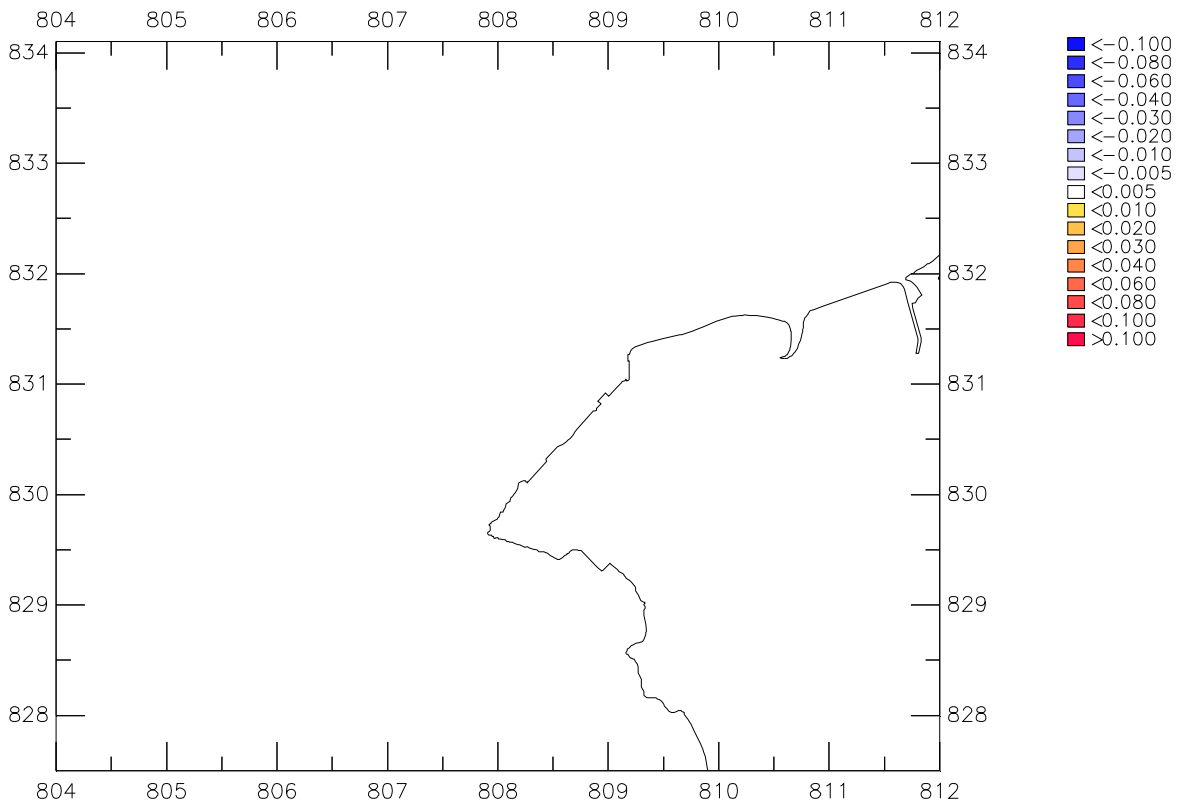
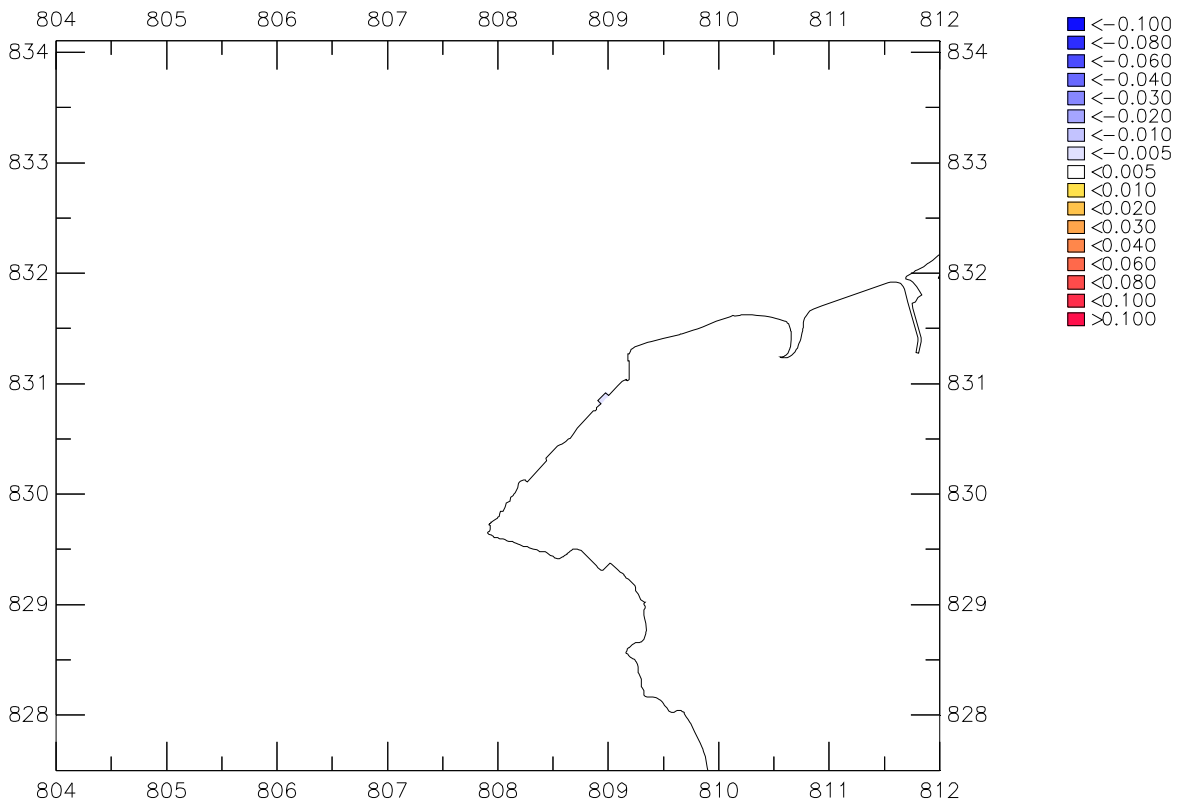
Impact of GRS case 2
 Total Phosph. (mg/L), mean depth average
 Top: dry season, Bot: wet season



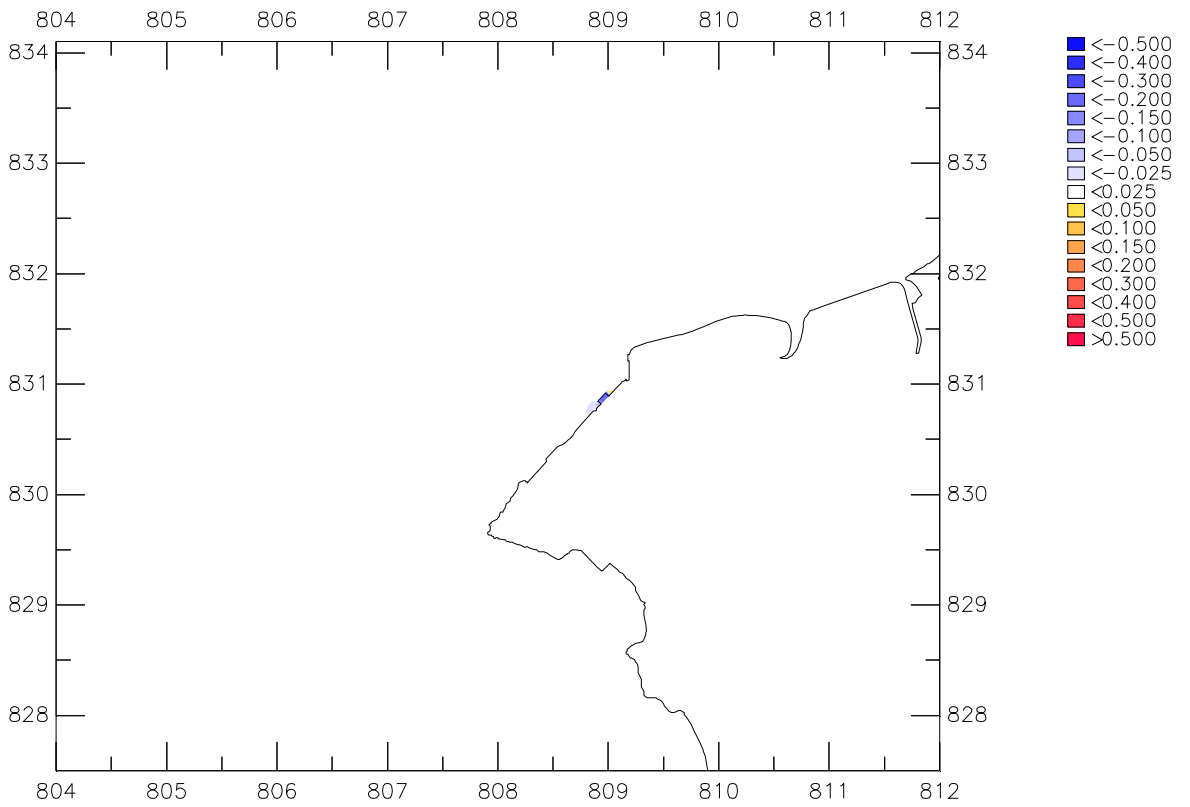
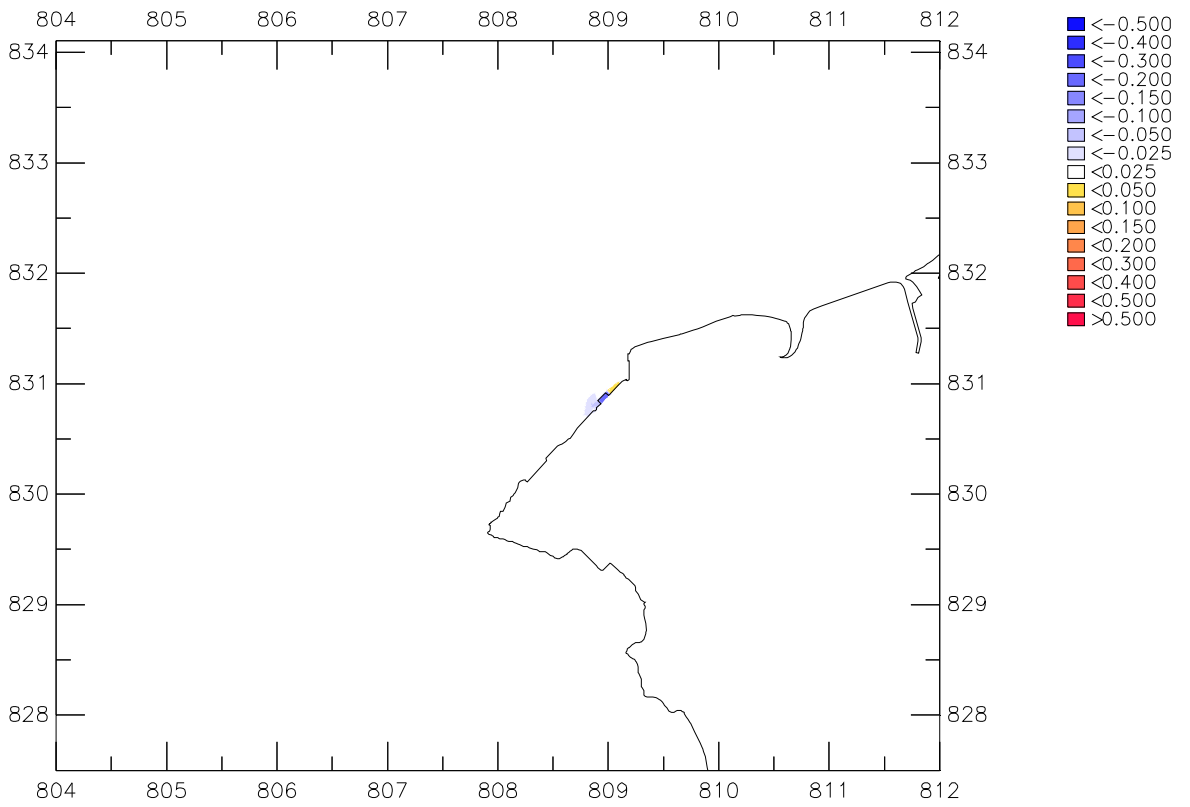
Impact of GRS case 2
 E.Coli (mpn/100ml), geom. mean depth av.
 Top: dry season, Bot: wet season



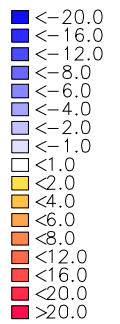
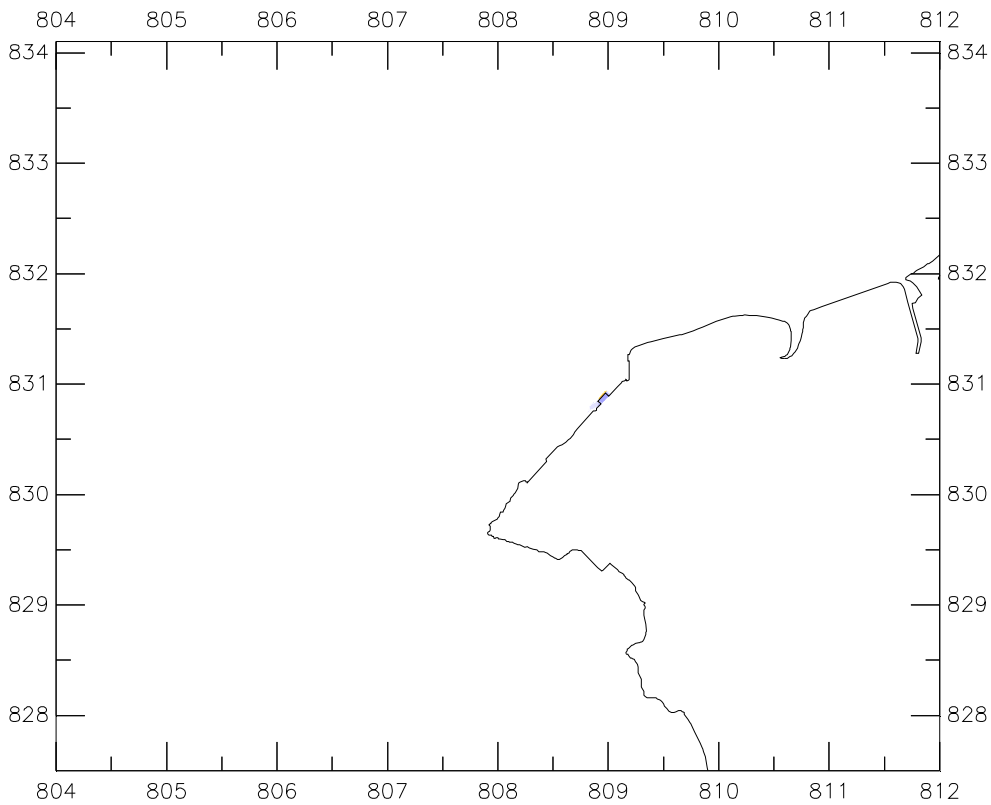
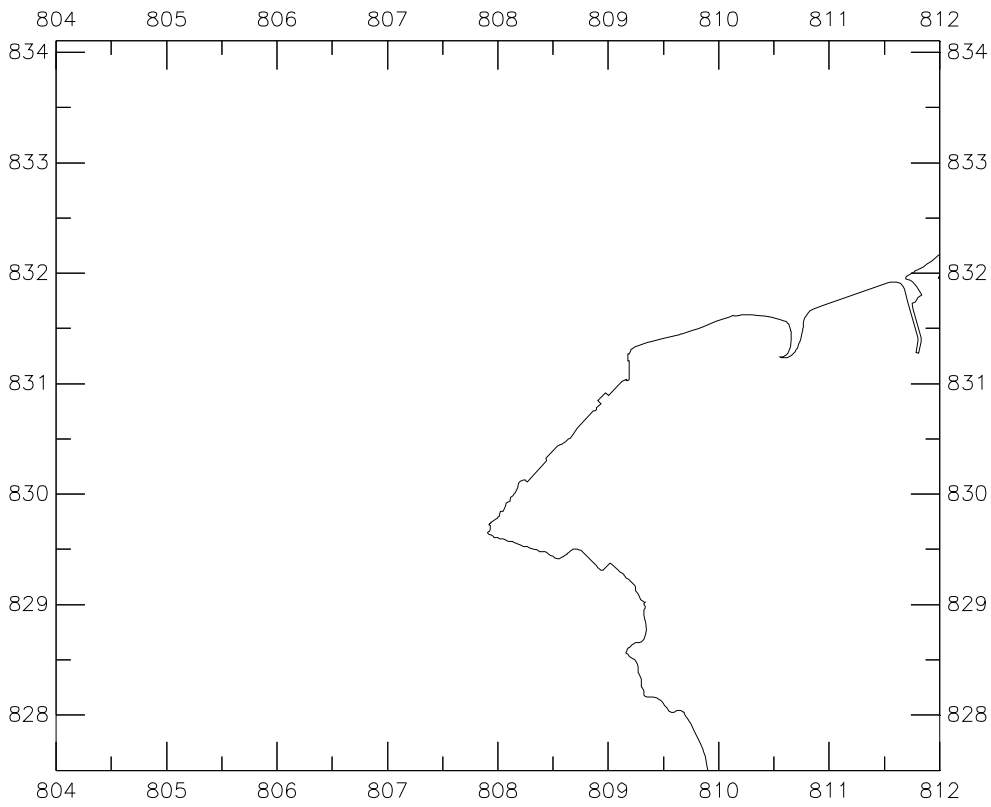
Impact of GRS case 2
 Ammonium (mgN/L), mean depth average
 Top: dry season, Bot: wet season



Impact of GRS case 2
 Phosphates (mgP/L), mean depth average
 Top: dry season, Bot: wet season



Impact of GRS case 2
 Nitrates (mgN/L), mean depth average
 Top: dry season, Bot: wet season



Impact of GRS case 2
 Chlorophyll-a (ug/L), top layer
 Top: dry season, Bot: wet season