

Key

- ASR
- 500m Study Area
- GRS Reclamation
- Co-located GRS
- Existing GRS
- Maximum Hourly NO₂ Concentration

Note: Hourly Criterion of NO₂ = 300µgm⁻³

ASRs	Location
A1	Black Point Power Station - Administration Building
A2	Karting Track
A3	Open Storage - Site Office
A4	Concrete Batching Plant - Site Office
A5	Hong Kong Oil - Site Office
A6	Open Storage - Site Office
A7	Sludge Treatment Facility - Site Office
A8	WENT Landfill Extension Site Office

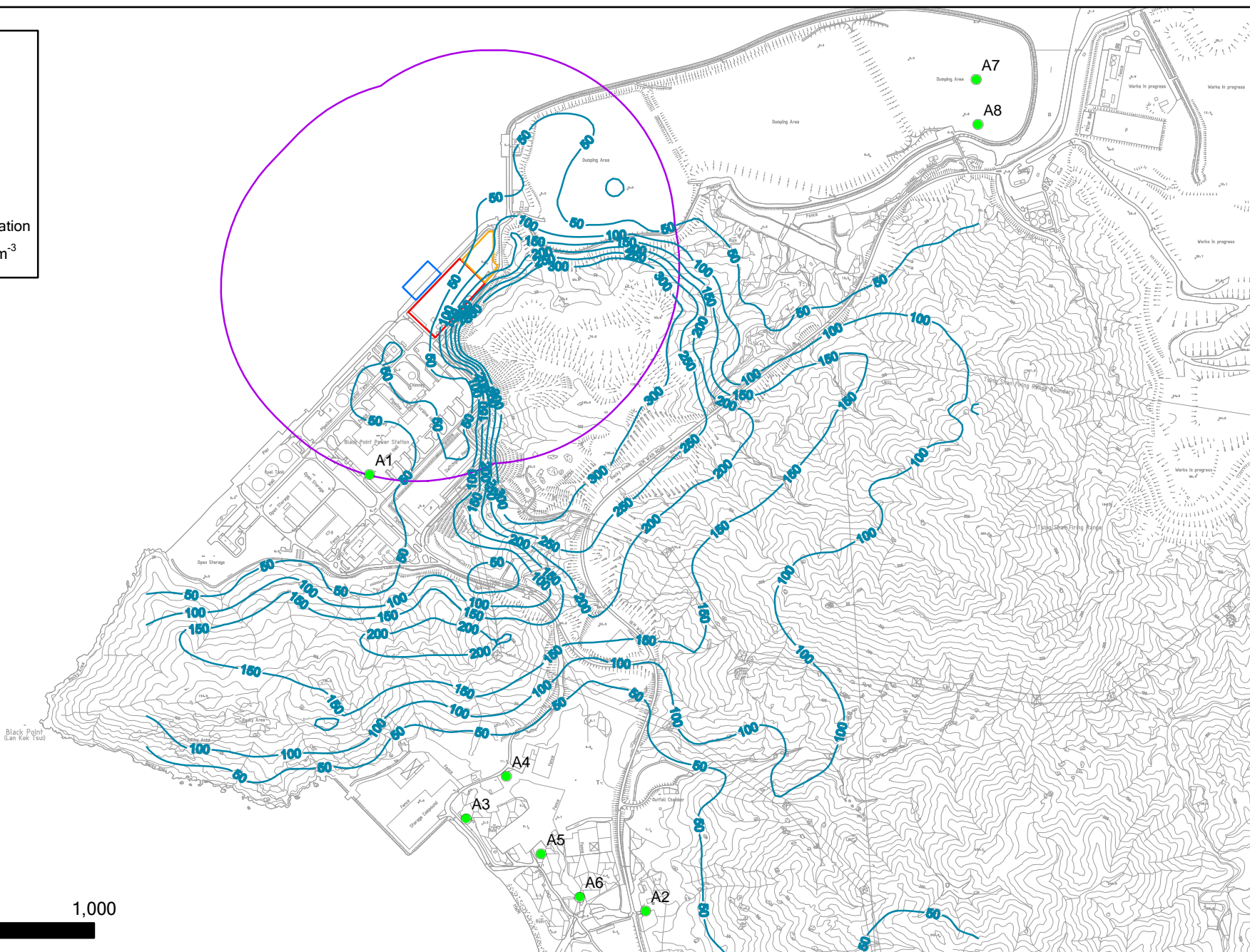


Figure 4.3a

Maximum Hourly NO₂ Concentration at 1.5m above ground
(Project Emission Only under Scenario 4)

Key

- ASR
- 500m Study Area
- GRS Reclamation
- Co-located GRS
- Existing GRS
- Daily NO₂ Concentration

Note: Daily Criterion of NO₂ = 150µg^m⁻³

ASRs	Location
A1	Black Point Power Station - Administration Building
A2	Karting Track
A3	Open Storage - Site Office
A4	Concrete Batching Plant - Site Office
A5	Hong Kong Oil - Site Office
A6	Open Storage - Site Office
A7	Sludge Treatment Facility - Site Office
A8	WENT Landfill Extension Site Office

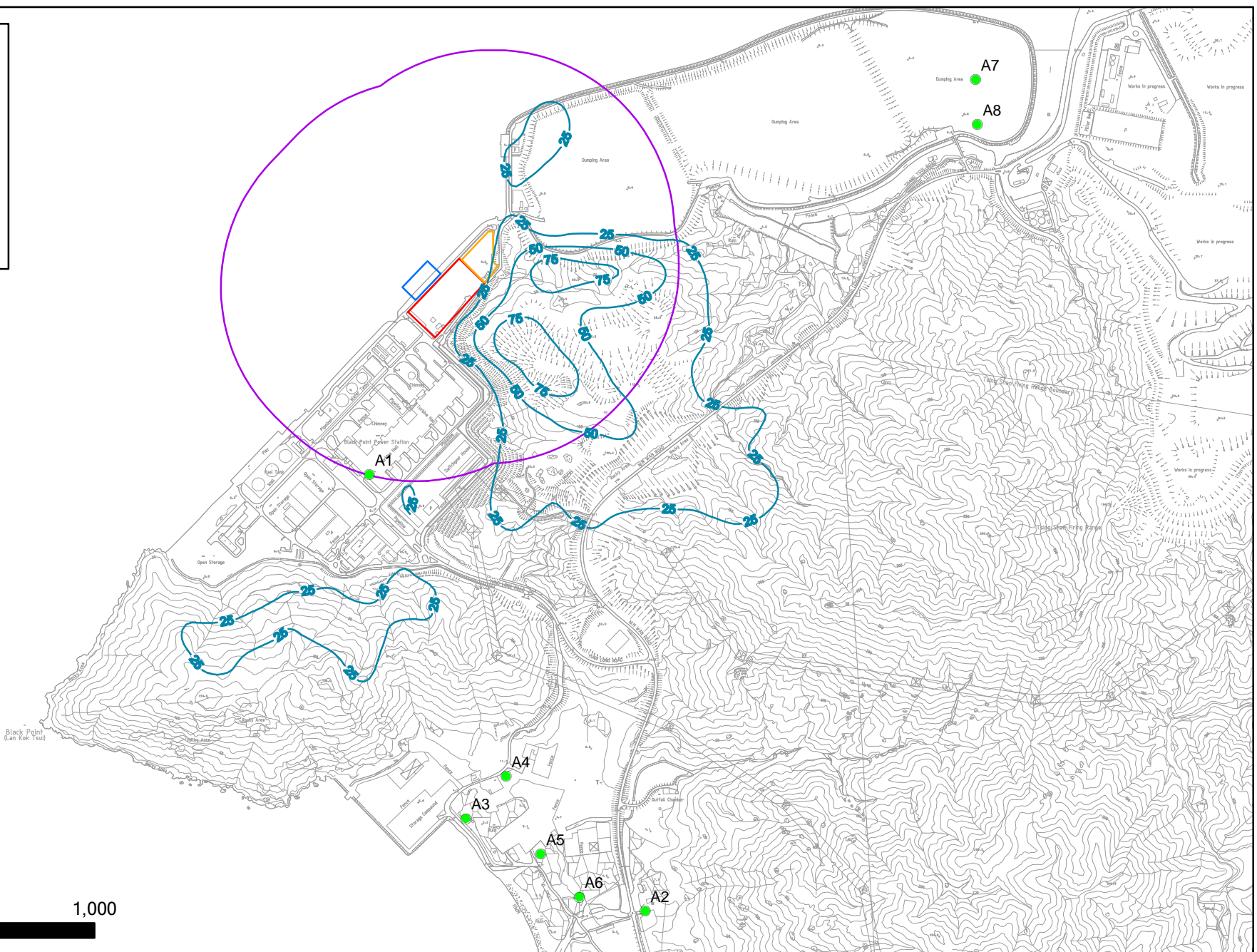


Figure 4.3b

Daily NO₂ Concentration at 1.5m above ground
(Project Emission Only under Scenario 4)

File: 08Feb2010\0104116_Daily NO2 1.5.mxd
Date: 08/02/2010

Environmental Resources Management

Key

- ASR
 - 500m Study Area
 - GRS Reclamation
 - Co-located GRS
 - Existing GRS
 - Annual Average NO₂ Concentration
- Note: Annual Criterion of NO₂ = 80µgm⁻³

ASRs	Location
A1	Black Point Power Station - Administration Building
A2	Karting Track
A3	Open Storage - Site Office
A4	Concrete Batching Plant - Site Office
A5	Hong Kong Oil - Site Office
A6	Open Storage - Site Office
A7	Sludge Treatment Facility - Site Office
A8	WENT Landfill Extension Site Office

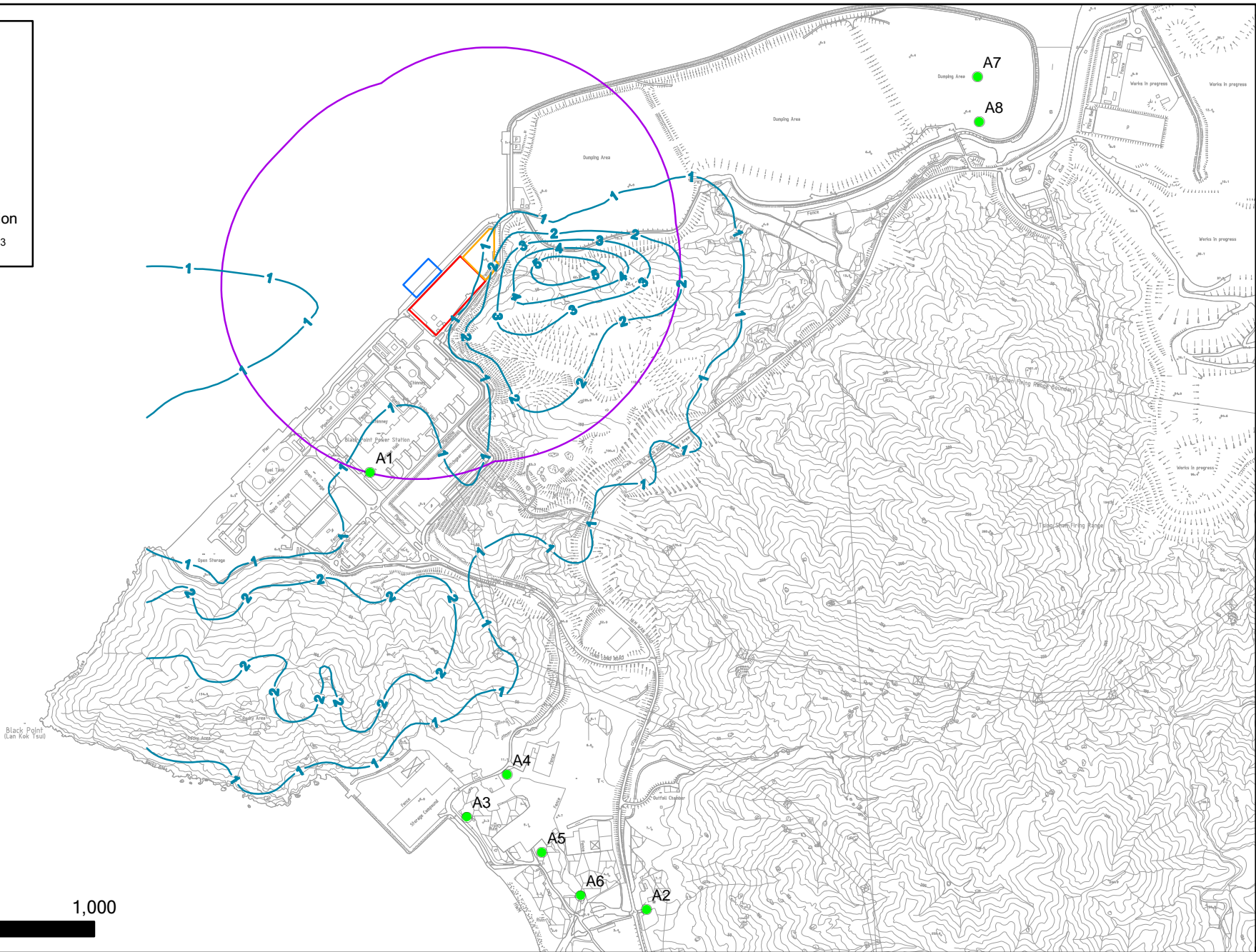


Figure 4.3c

Annual Average NO₂ Concentration at 1.5m above ground
(Project Emission Only under Scenario 4)

Key

- ASR
- 500m Study Area
- GRS Reclamation
- Co-located GRS
- Existing GRS
- Maximum Hourly NO₂ Concentration

Note: Hourly Criterion of NO₂ = 300µgm⁻³

ASRs	Location
A1	Black Point Power Station - Administration Building
A2	Karting Track
A3	Open Storage - Site Office
A4	Concrete Batching Plant - Site Office
A5	Hong Kong Oil - Site Office
A6	Open Storage - Site Office
A7	Sludge Treatment Facility - Site Office
A8	WENT Landfill Extension Site Office

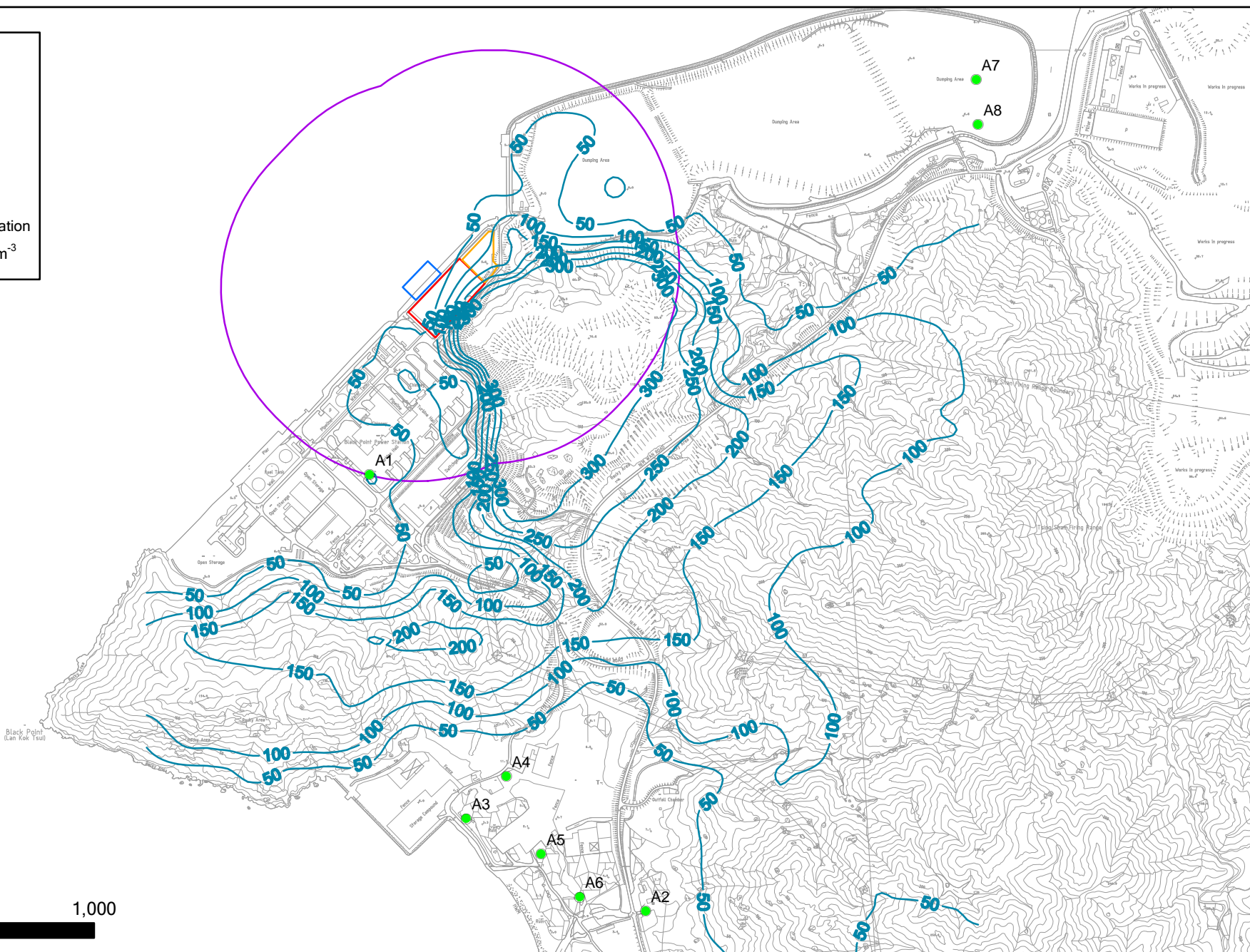


Figure 4.4a

Maximum Hourly NO₂ Concentration at 5m above ground
(Project Emission Only under Scenario 4)

Key

- ASR
- 500m Study Area
- GRS Reclamation
- Co-located GRS
- Existing GRS
- Daily NO₂ Concentration

Note: Daily Criterion of NO₂ = 150µg^m-³

ASRs	Location
A1	Black Point Power Station - Administration Building
A2	Karting Track
A3	Open Storage - Site Office
A4	Concrete Batching Plant - Site Office
A5	Hong Kong Oil - Site Office
A6	Open Storage - Site Office
A7	Sludge Treatment Facility - Site Office
A8	WENT Landfill Extension Site Office

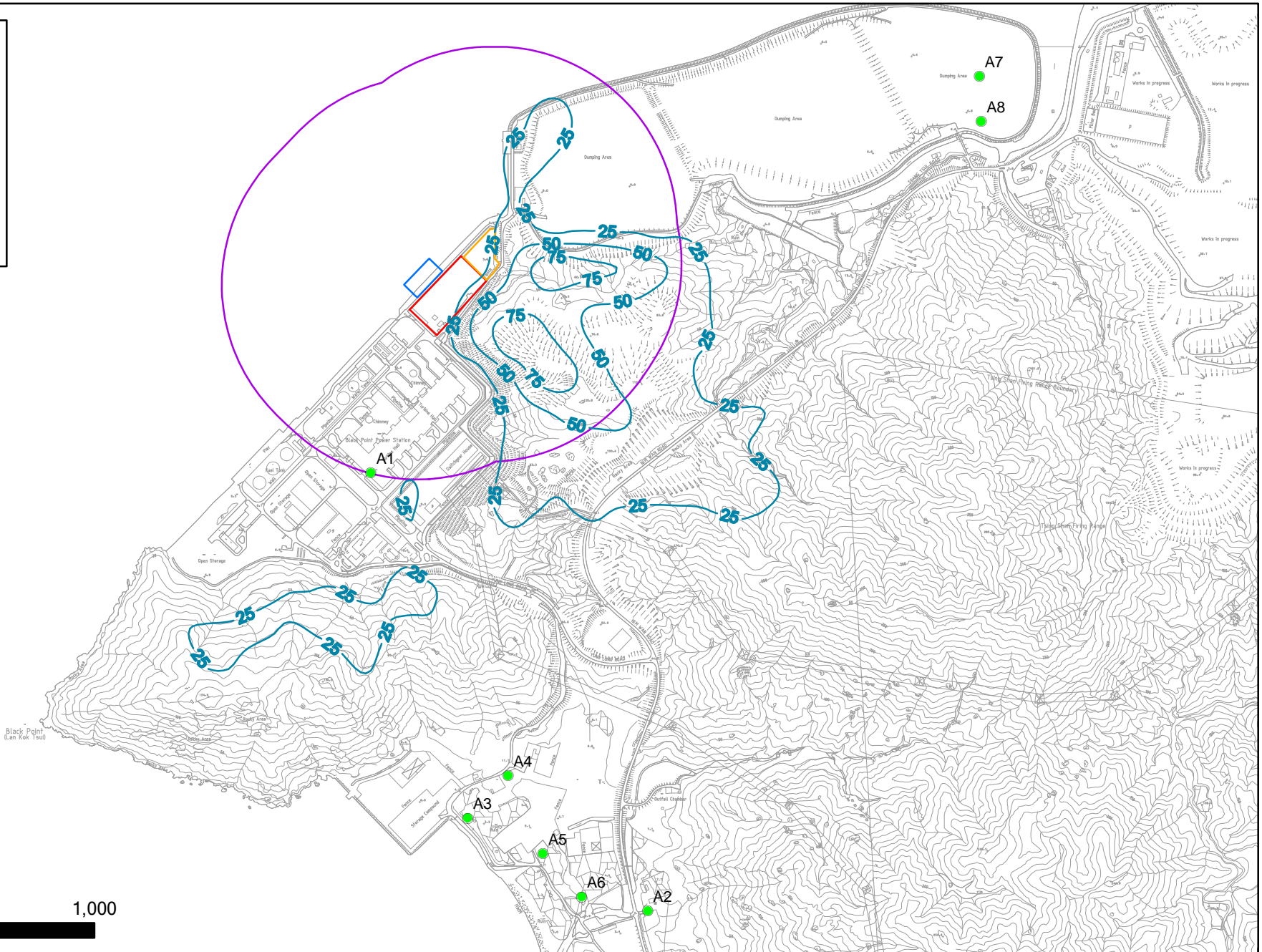


Figure 4.4b

Daily NO₂ Concentration at 5m above ground
(Project Emission Only under Scenario 4)

File: 08Feb2010\0104116_Daily NO2 5.mxd
Date: 08/02/2010

**Environmental
Resources
Management**



Key

- ASR
 - 500m Study Area
 - GRS Reclamation
 - Co-located GRS
 - Existing GRS
 - Annual Average NO₂ Concentration
- Note: Annual Criterion of NO₂ = 80µgm⁻³

ASRs	Location
A1	Black Point Power Station - Administration Building
A2	Karting Track
A3	Open Storage - Site Office
A4	Concrete Batching Plant - Site Office
A5	Hong Kong Oil - Site Office
A6	Open Storage - Site Office
A7	Sludge Treatment Facility - Site Office
A8	WENT Landfill Extension Site Office

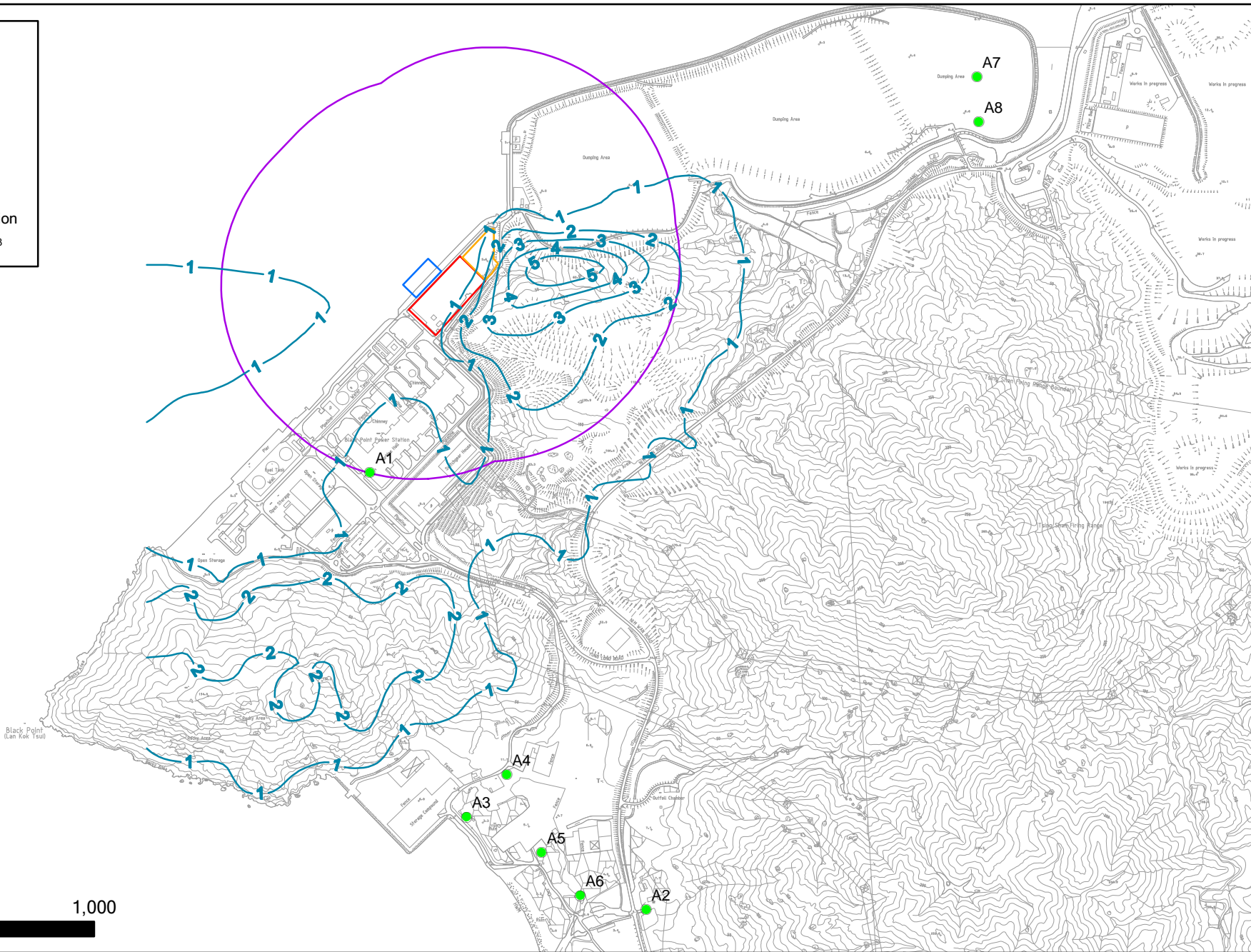


Figure 4.4c

Annual Average NO₂ Concentration at 5m above ground
(Project Emission Only under Scenario 4)

Key

- ASR
- 500m Study Area
- GRS Reclamation
- Co-located GRS
- Existing GRS
- Maximum Hourly NO₂ Concentration

Note: Hourly Criterion of NO₂ = 300µgm⁻³

ASRs	Location
A1	Black Point Power Station - Administration Building
A2	Karting Track
A3	Open Storage - Site Office
A4	Concrete Batching Plant - Site Office
A5	Hong Kong Oil - Site Office
A6	Open Storage - Site Office
A7	Sludge Treatment Facility - Site Office
A8	WENT Landfill Extension Site Office

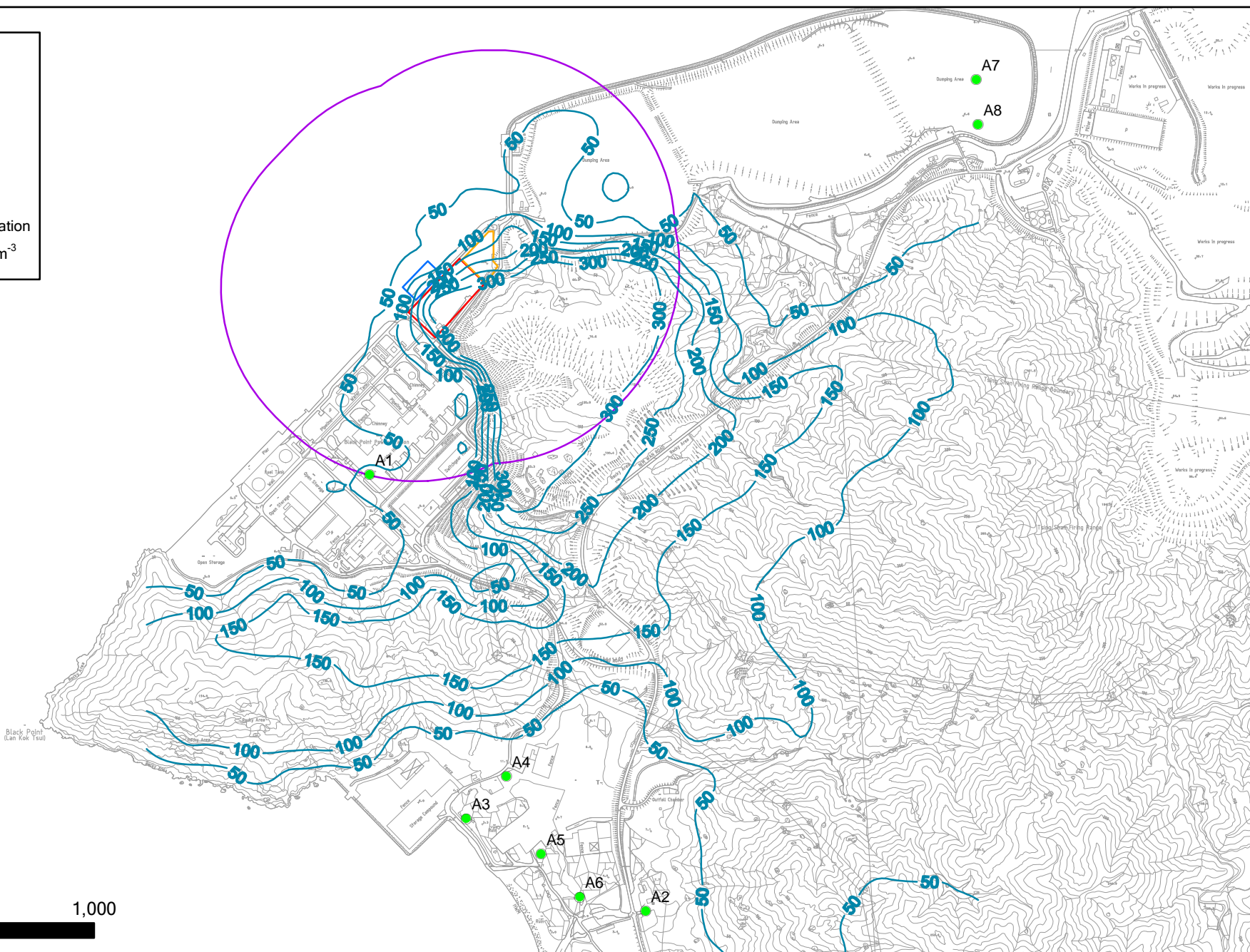


Figure 4.5a

Maximum Hourly NO₂ Concentration at 10m above ground
(Project Emission Only under Scenario 4)

Key

- ASR
- 500m Study Area
- GRS Reclamation
- Co-located GRS
- Existing GRS
- Daily NO₂ Concentration

Note: Daily Criterion of NO₂ = 150µg^m-³

ASRs	Location
A1	Black Point Power Station - Administration Building
A2	Karting Track
A3	Open Storage - Site Office
A4	Concrete Batching Plant - Site Office
A5	Hong Kong Oil - Site Office
A6	Open Storage - Site Office
A7	Sludge Treatment Facility - Site Office
A8	WENT Landfill Extension Site Office

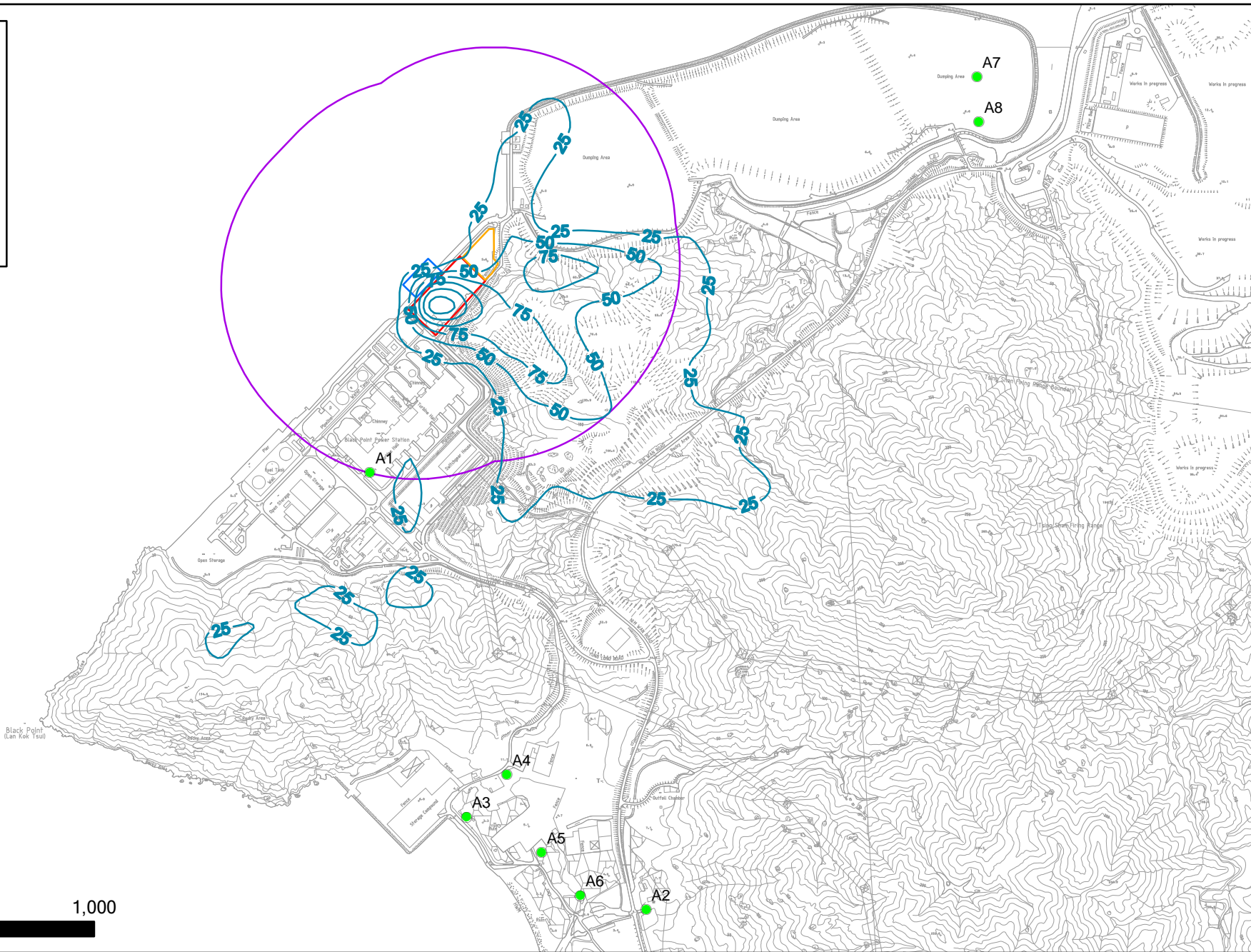


Figure 4.5b

Daily NO₂ Concentration at 10m above ground
(Project Emission Only under Scenario 4)

File: 08Feb2010\0104116_Daily NO2 10.mxd
Date: 08/02/2010

**Environmental
Resources
Management**



Key

- ASR
 - 500m Study Area
 - GRS Reclamation
 - Co-located GRS
 - Existing GRS
 - Annual Average NO₂ Concentration
- Note: Annual Criterion of NO₂ = 80µgm⁻³

ASRs	Location
A1	Black Point Power Station - Administration Building
A2	Karting Track
A3	Open Storage - Site Office
A4	Concrete Batching Plant - Site Office
A5	Hong Kong Oil - Site Office
A6	Open Storage - Site Office
A7	Sludge Treatment Facility - Site Office
A8	WENT Landfill Extension Site Office

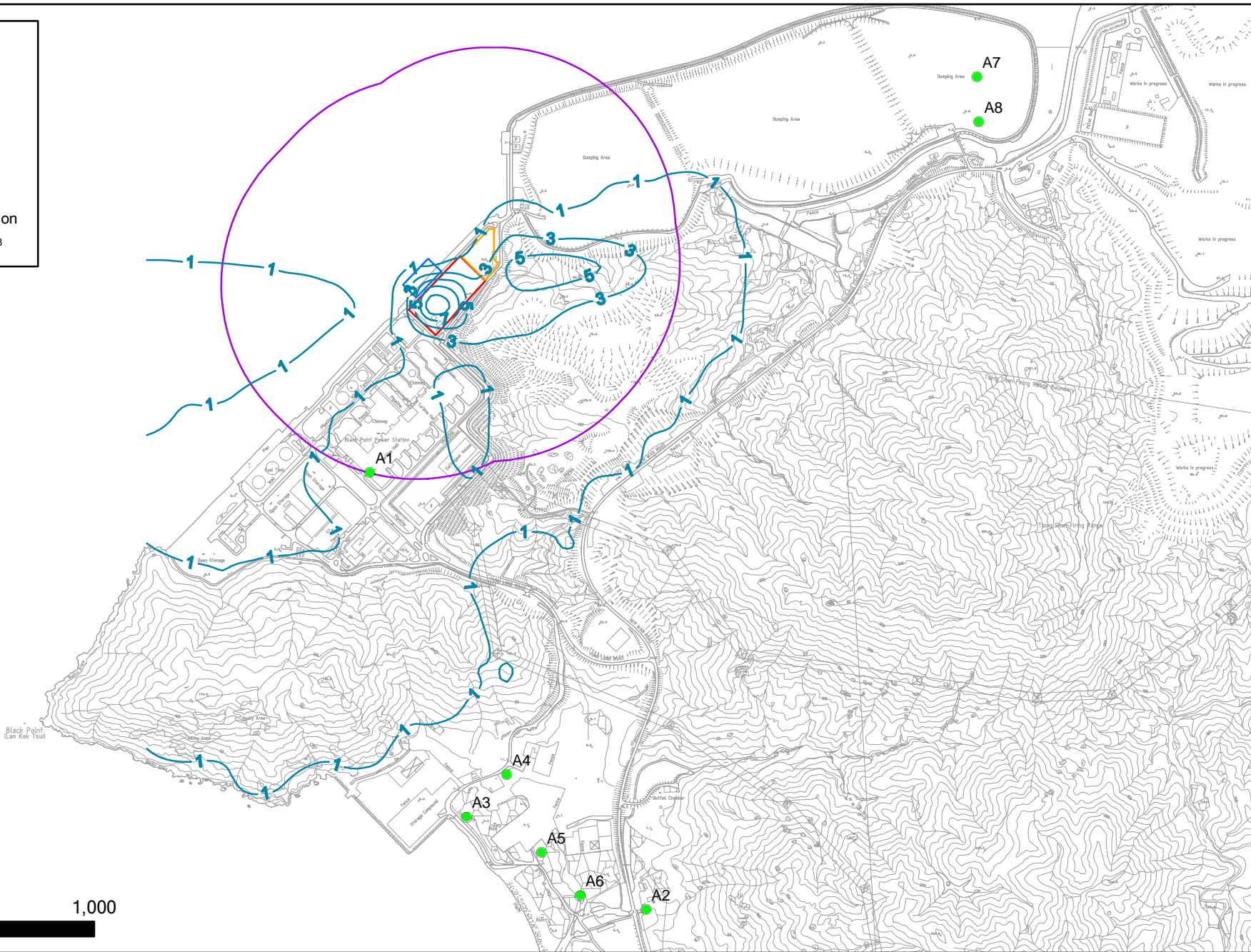


Figure 4.5c

Annual Average NO₂ Concentration at 10m above ground
(Project Emission Only under Scenario 4)

Key

- ASR
- 500m Study Area
- GRS Reclamation
- Co-located GRS
- Existing GRS
- Maximum Hourly NO₂ Concentration

Note: Hourly Criterion of NO₂ = 300µg⁻³

ASRs	Location
A1	Black Point Power Station - Administration Building
A2	Karting Track
A3	Open Storage - Site Office
A4	Concrete Batching Plant - Site Office
A5	Hong Kong Oil - Site Office
A6	Open Storage - Site Office
A7	Sludge Treatment Facility - Site Office
A8	WENT Landfill Extension Site Office

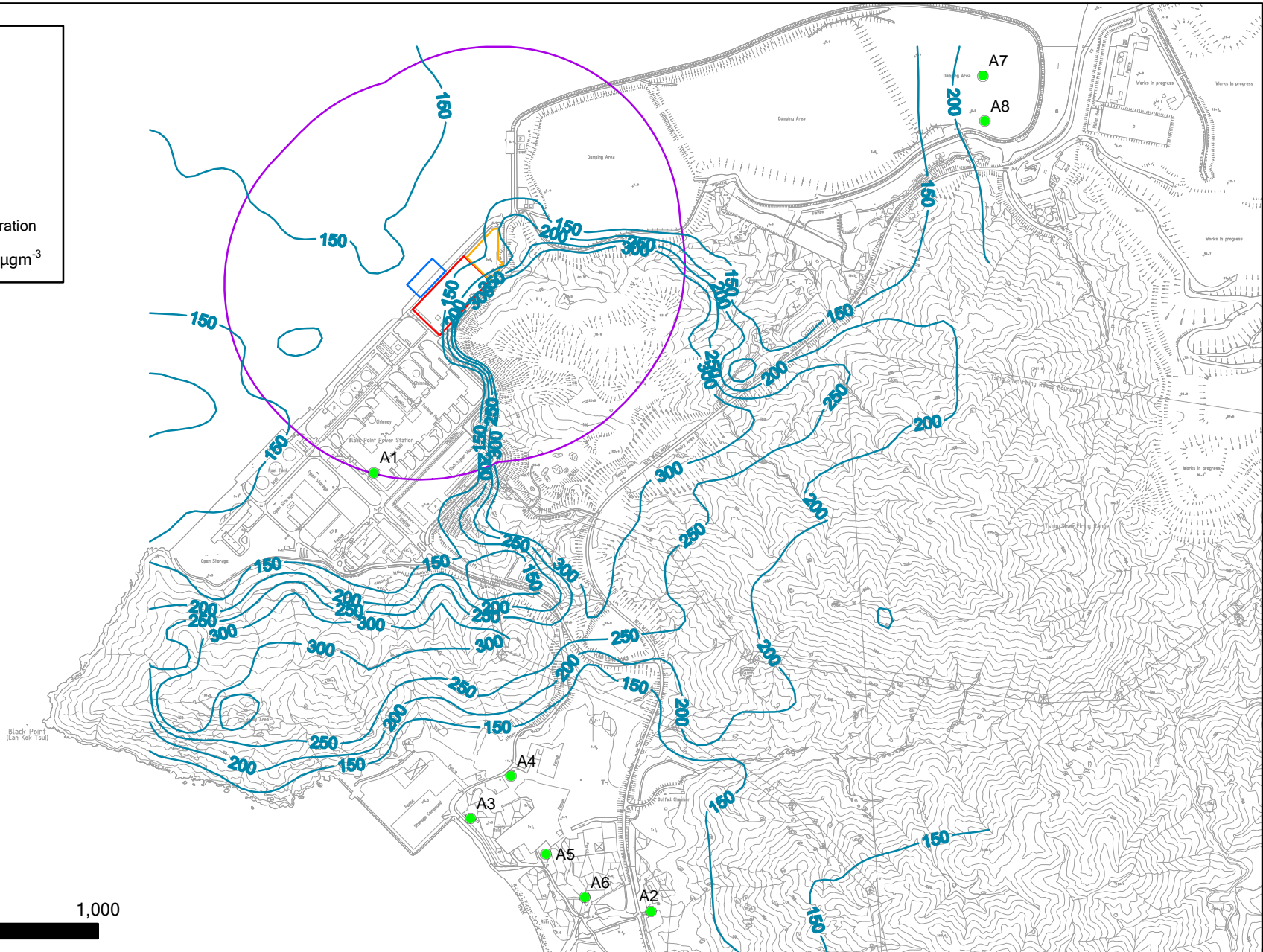


Figure 4.6a

Cumulative Maximum Hourly NO₂ Concentration at 1.5m above ground
(Project Emission Only under Scenario 4 + Other Emissions + Background)

File: 08Feb2010\0104116_cum hr NO2 1.5.mxd
Date: 08/02/2010

Key

- ASR
- ◻ 500m Study Area
- ◻ GRS Reclamation
- ◻ Co-located GRS
- ◻ Existing GRS
- Daily NO₂ Concentration

Note: Daily Criterion of NO₂ = 150µg^m⁻³

ASRs	Location
A1	Black Point Power Station - Administration Building
A2	Karting Track
A3	Open Storage - Site Office
A4	Concrete Batching Plant - Site Office
A5	Hong Kong Oil - Site Office
A6	Open Storage - Site Office
A7	Sludge Treatment Facility - Site Office
A8	WENT Landfill Extension Site Office

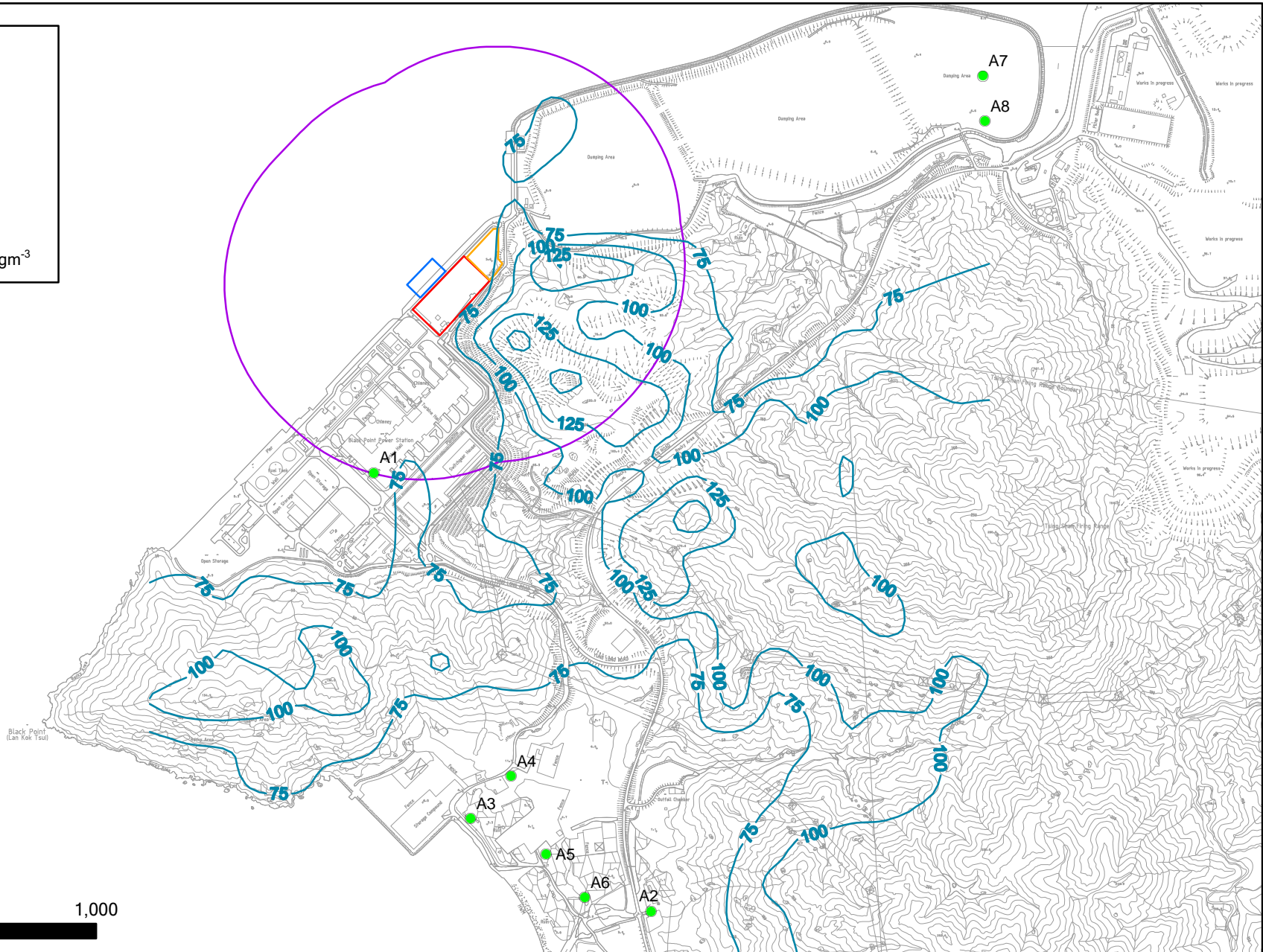


Figure 4.6b

Cumulative Daily NO₂ Concentration at 1.5m above ground
 (Project Emission Only under Scenario 4 + Other Emissions + Background)

File: 08Feb2010\0104116_cum daily NO2 1.5.mxd
 Date: 08/02/2010

Key

- ASR
- 500m Study Area
- GRS Reclamation
- Co-located GRS
- Existing GRS
- Annual Average NO₂ Concentration

Note: Annual Criterion of NO₂ = 80µgm⁻³

ASRs	Location
A1	Black Point Power Station - Administration Building
A2	Karting Track
A3	Open Storage - Site Office
A4	Concrete Batching Plant - Site Office
A5	Hong Kong Oil - Site Office
A6	Open Storage - Site Office
A7	Sludge Treatment Facility - Site Office
A8	WENT Landfill Extension Site Office

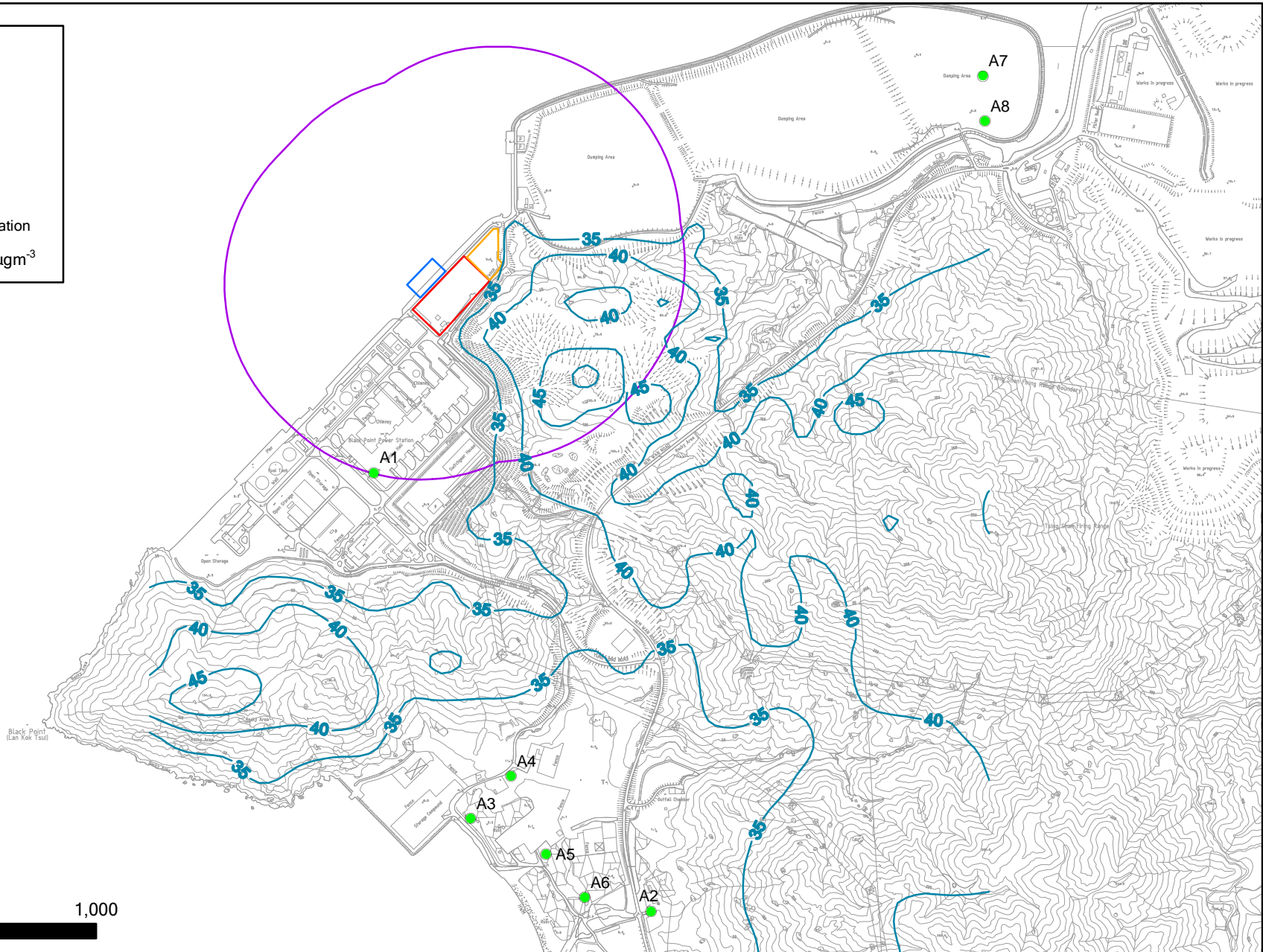


Figure 4.6c

Cumulative Annual Average NO₂ Concentration at 1.5m above ground
(Project Emission Only under Scenario 4 + Other Emissions + Background)

File: 08Feb2010\0104116_cum annual NO2 1.5.mxd
Date: 08/02/2010

Key

- ASR
- ◻ 500m Study Area
- ◻ GRS Reclamation
- ◻ Co-located GRS
- ◻ Existing GRS
- Maximum Hourly NO₂ Concentration

Note: Hourly Criterion of NO₂ = 300µg⁻³

ASRs	Location
A1	Black Point Power Station - Administration Building
A2	Karting Track
A3	Open Storage - Site Office
A4	Concrete Batching Plant - Site Office
A5	Hong Kong Oil - Site Office
A6	Open Storage - Site Office
A7	Sludge Treatment Facility - Site Office
A8	WENT Landfill Extension Site Office

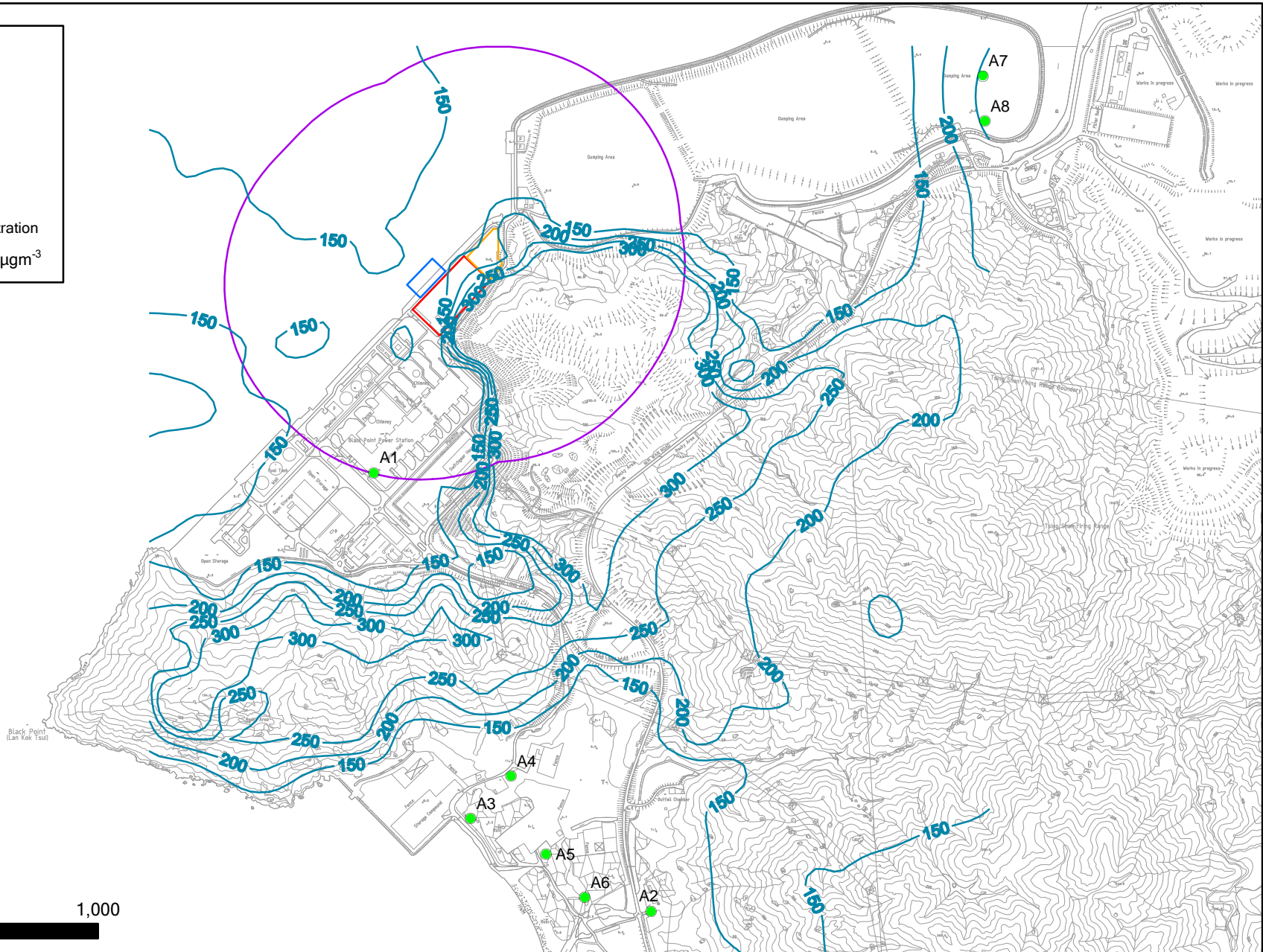


Figure 4.7a

Cumulative Maximum Hourly NO₂ Concentration at 5m above ground
 (Project Emission Only under Scenario 4 + Other Emissions + Background)

File: 08Feb2010\0104116_cum hr NO2 5.mxd
 Date: 08/02/2010

Key

- ASR
- 500m Study Area
- GRS Reclamation
- Co-located GRS
- Existing GRS
- Daily NO₂ Concentration

Note: Daily Criterion of NO₂ = 150µg^m⁻³

ASRs	Location
A1	Black Point Power Station - Administration Building
A2	Karting Track
A3	Open Storage - Site Office
A4	Concrete Batching Plant - Site Office
A5	Hong Kong Oil - Site Office
A6	Open Storage - Site Office
A7	Sludge Treatment Facility - Site Office
A8	WENT Landfill Extension Site Office

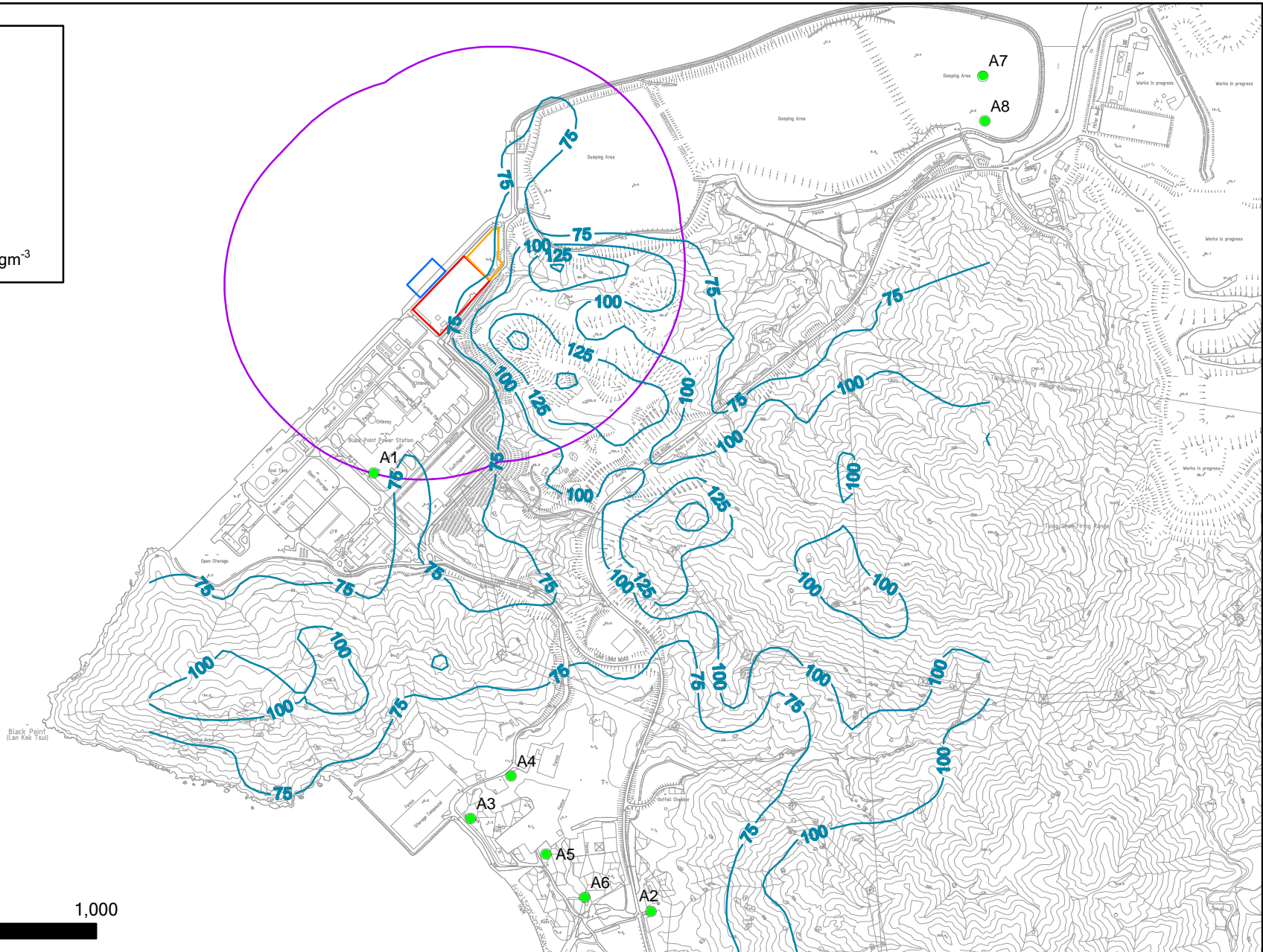


Figure 4.7b

Cumulative Daily NO₂ Concentration at 5m above ground
 (Project Emission Only under Scenario 4 + Other Emissions + Background)

File: 08Feb2010\0104116_cum daily NO2 5.mxd
 Date: 08/02/2010

Key

- ASR
- 500m Study Area
- GRS Reclamation
- Co-located GRS
- Existing GRS
- Annual Average NO₂ Concentration

Note: Annual Criterion of NO₂ = 80µgm⁻³

ASRs	Location
A1	Black Point Power Station - Administration Building
A2	Karting Track
A3	Open Storage - Site Office
A4	Concrete Batching Plant - Site Office
A5	Hong Kong Oil - Site Office
A6	Open Storage - Site Office
A7	Sludge Treatment Facility - Site Office
A8	WENT Landfill Extension Site Office

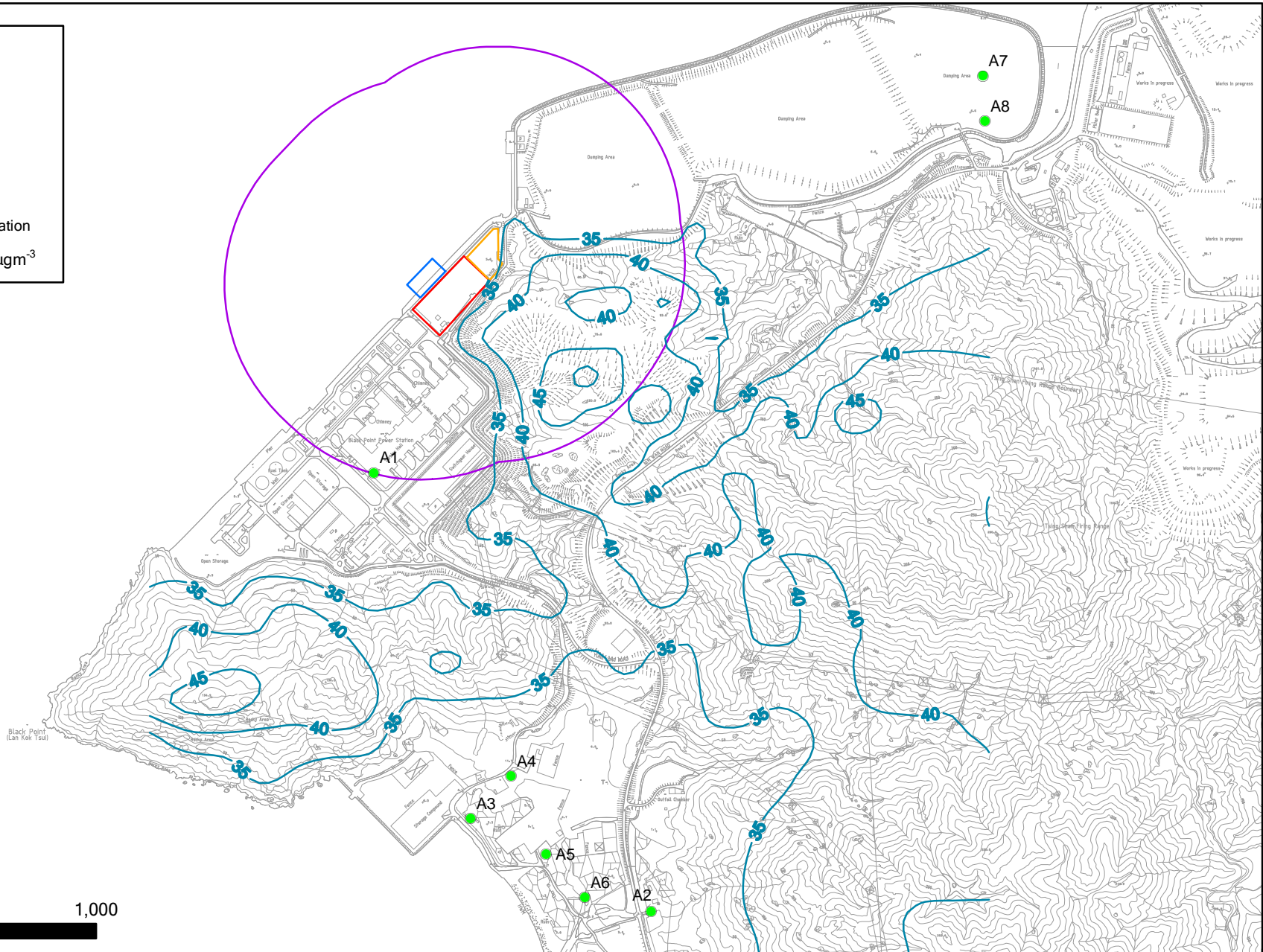


Figure 4.7c

Cumulative Annual Average NO₂ Concentration at 5m above ground
 (Project Emission Only under Scenario 4 + Other Emissions + Background)

File: 08Feb2010\0104116_cum annual NO2 5.mxd
 Date: 08/02/2010

Key

- ASR
- 500m Study Area
- GRS Reclamation
- Co-located GRS
- Existing GRS
- Maximum Hourly NO₂ Concentration

Note: Hourly Criterion of NO₂ = 300µg⁻³

ASRs	Location
A1	Black Point Power Station - Administration Building
A2	Karting Track
A3	Open Storage - Site Office
A4	Concrete Batching Plant - Site Office
A5	Hong Kong Oil - Site Office
A6	Open Storage - Site Office
A7	Sludge Treatment Facility - Site Office
A8	WENT Landfill Extension Site Office

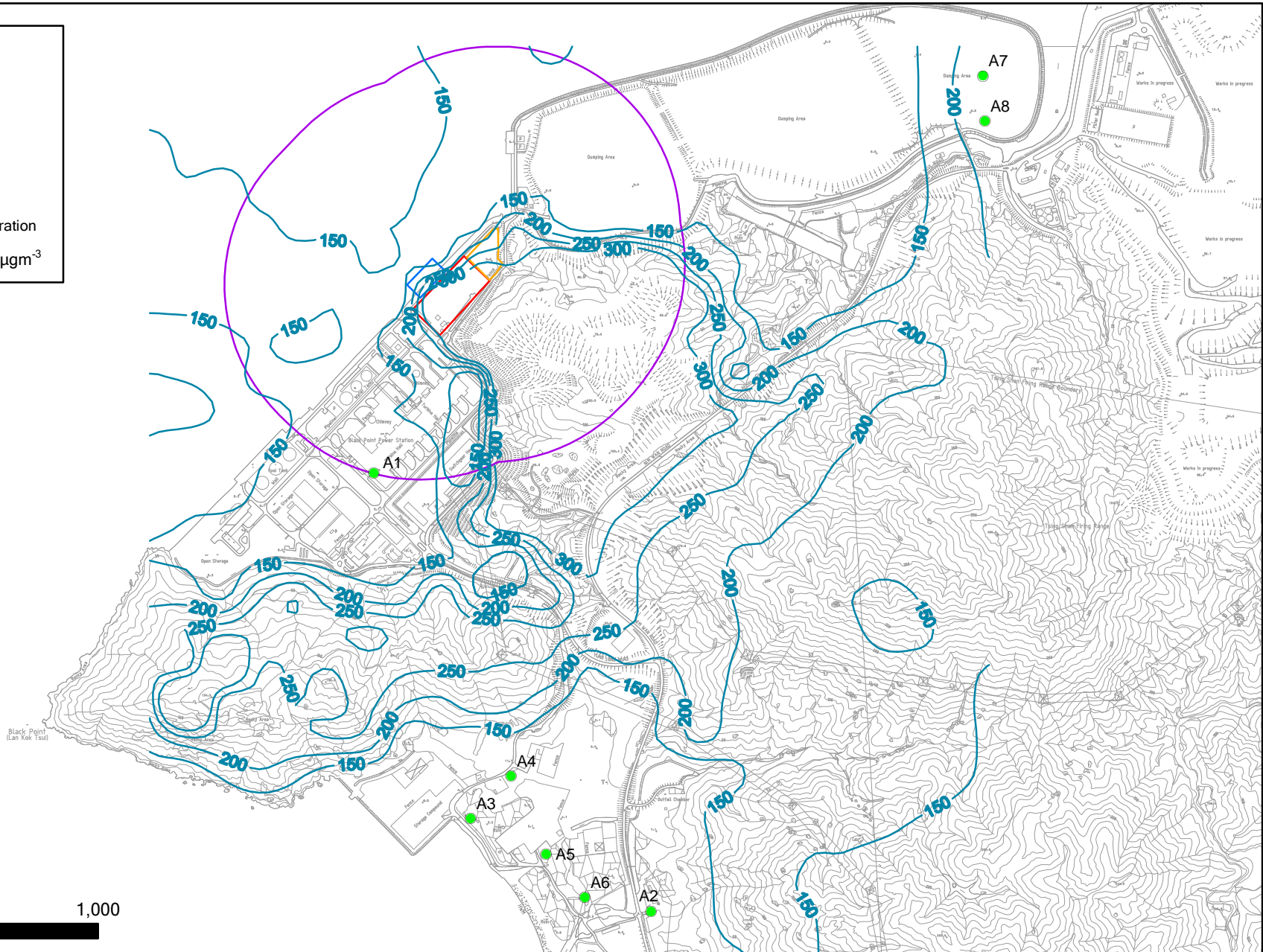


Figure 4.8a

Cumulative Maximum Hourly NO₂ Concentration at 10m above ground
(Project Emission Only under Scenario 4 + Other Emissions + Background)

File: 08Feb2010\0104116_cum hr NO2 10.mxd
Date: 08/02/2010

Key

- ASR
- 500m Study Area
- GRS Reclamation
- Co-located GRS
- Existing GRS
- Daily NO₂ Concentration

Note: Daily Criterion of NO₂ = 150µg^m⁻³

ASRs	Location
A1	Black Point Power Station - Administration Building
A2	Karting Track
A3	Open Storage - Site Office
A4	Concrete Batching Plant - Site Office
A5	Hong Kong Oil - Site Office
A6	Open Storage - Site Office
A7	Sludge Treatment Facility - Site Office
A8	WENT Landfill Extension Site Office

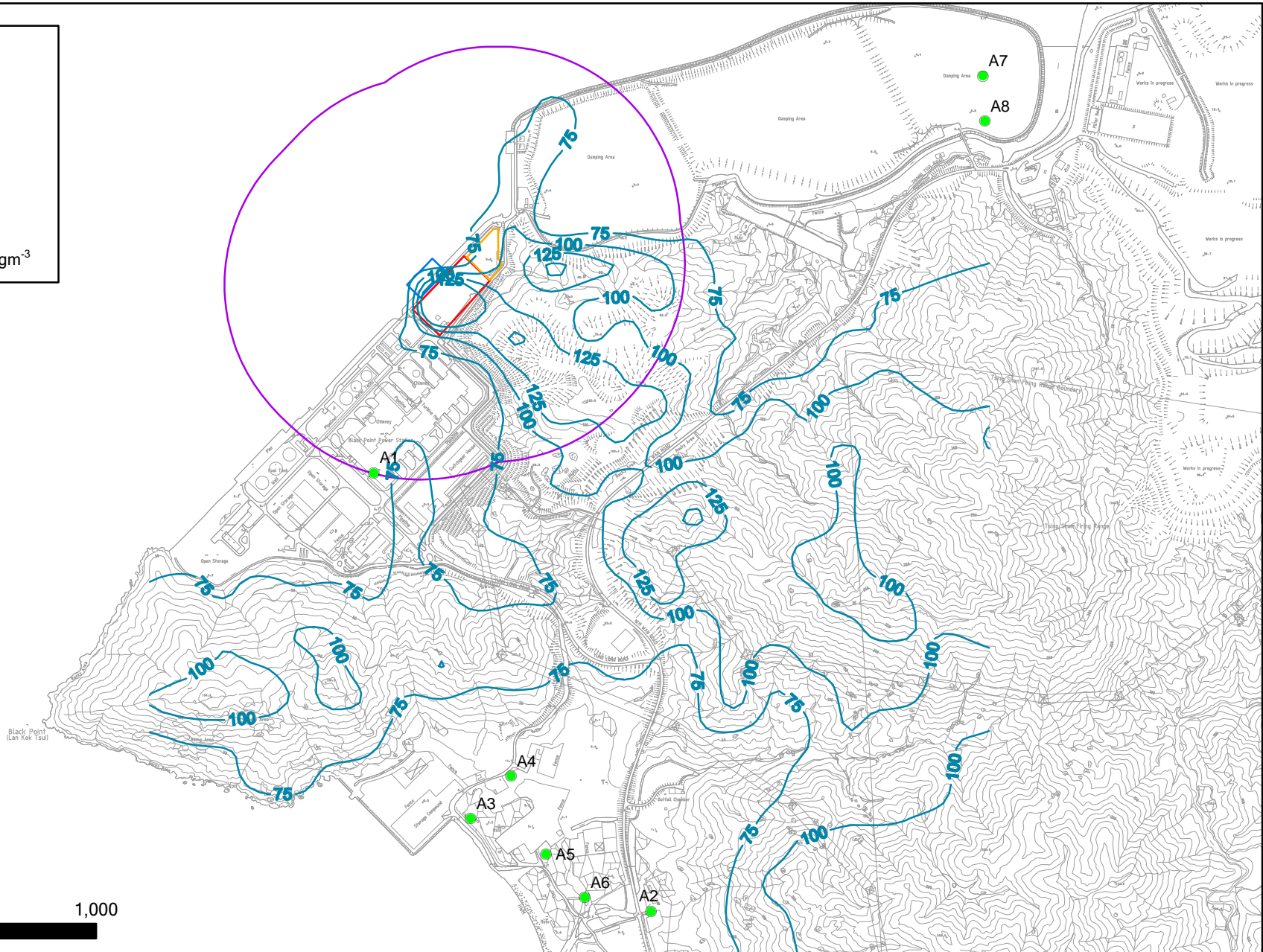


Figure 4.8b

Cumulative Daily NO₂ Concentration at 10m above ground
 (Project Emission Only under Scenario 4 + Other Emissions + Background)

File: 08Feb2010\0104116_cum daily NO2 10.mxd
 Date: 08/02/2010

Key

- ASR
- 500m Study Area
- GRS Reclamation
- Co-located GRS
- Existing GRS
- Annual Average NO₂ Concentration

Note: Annual Criterion of NO₂ = 80µgm⁻³

ASRs	Location
A1	Black Point Power Station - Administration Building
A2	Karting Track
A3	Open Storage - Site Office
A4	Concrete Batching Plant - Site Office
A5	Hong Kong Oil - Site Office
A6	Open Storage - Site Office
A7	Sludge Treatment Facility - Site Office
A8	WENT Landfill Extension Site Office

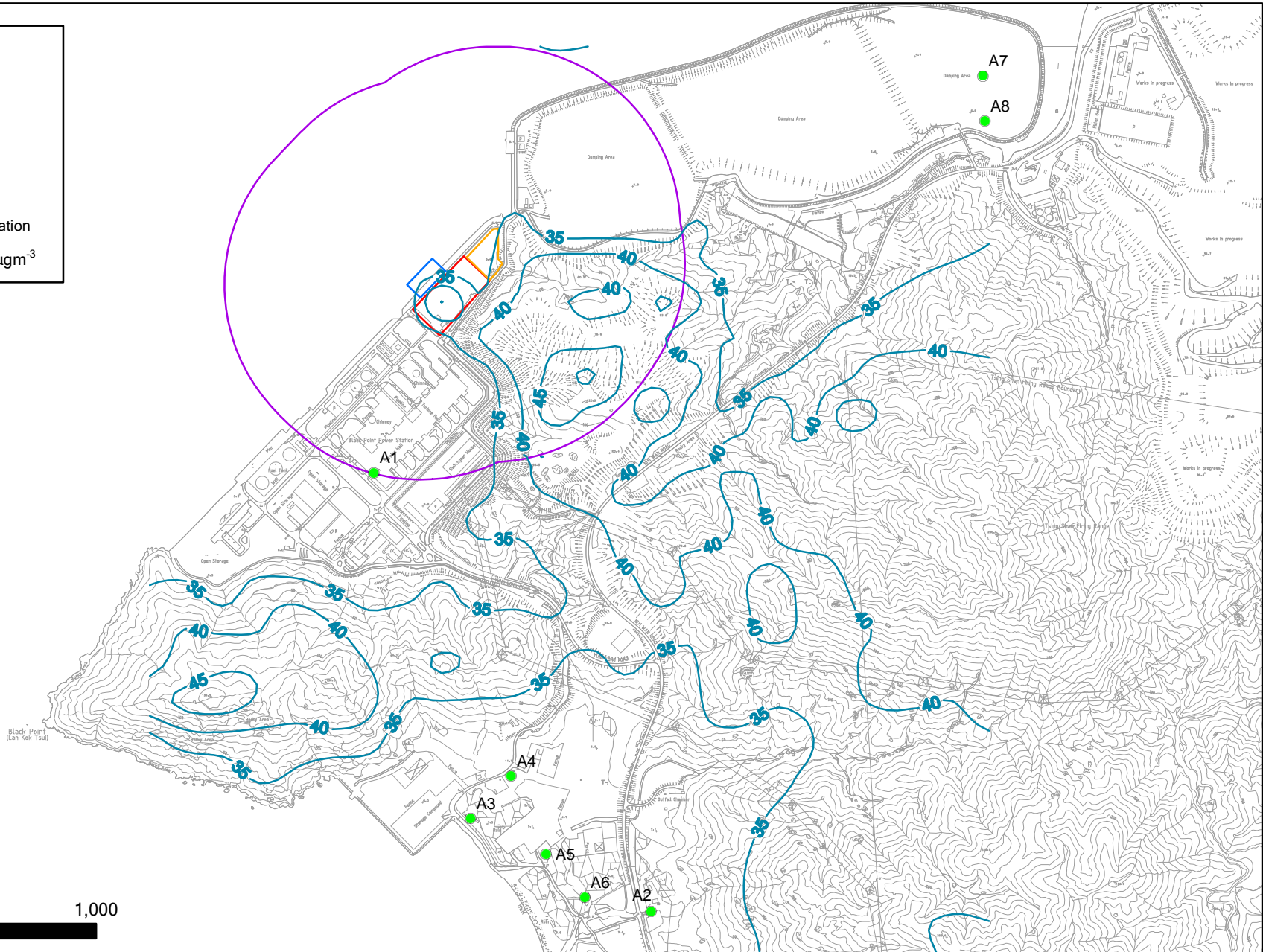


Figure 4.8c

Cumulative Annual Average NO₂ Concentration at 10m above ground
(Project Emission Only under Scenario 4 + Other Emissions + Background)

File: 08Feb2010\0104116_cum annual NO2 10.mxd
Date: 08/02/2010

