

Key

- ASR
- 500m Study Area
- GRS Reclamation
- Co-located GRS
- Existing GRS
- Maximum Hourly NO₂ Concentration

Note: Hourly Criterion of NO₂ = 300µgm⁻³

ASRs	Location
A1	Black Point Power Station - Administration Building
A2	Karting Track
A3	Open Storage - Site Office
A4	Concrete Batching Plant - Site Office
A5	Hong Kong Oil - Site Office
A6	Open Storage - Site Office
A7	Sludge Treatment Facility - Site Office
A8	WENT Landfill Extension Site Office

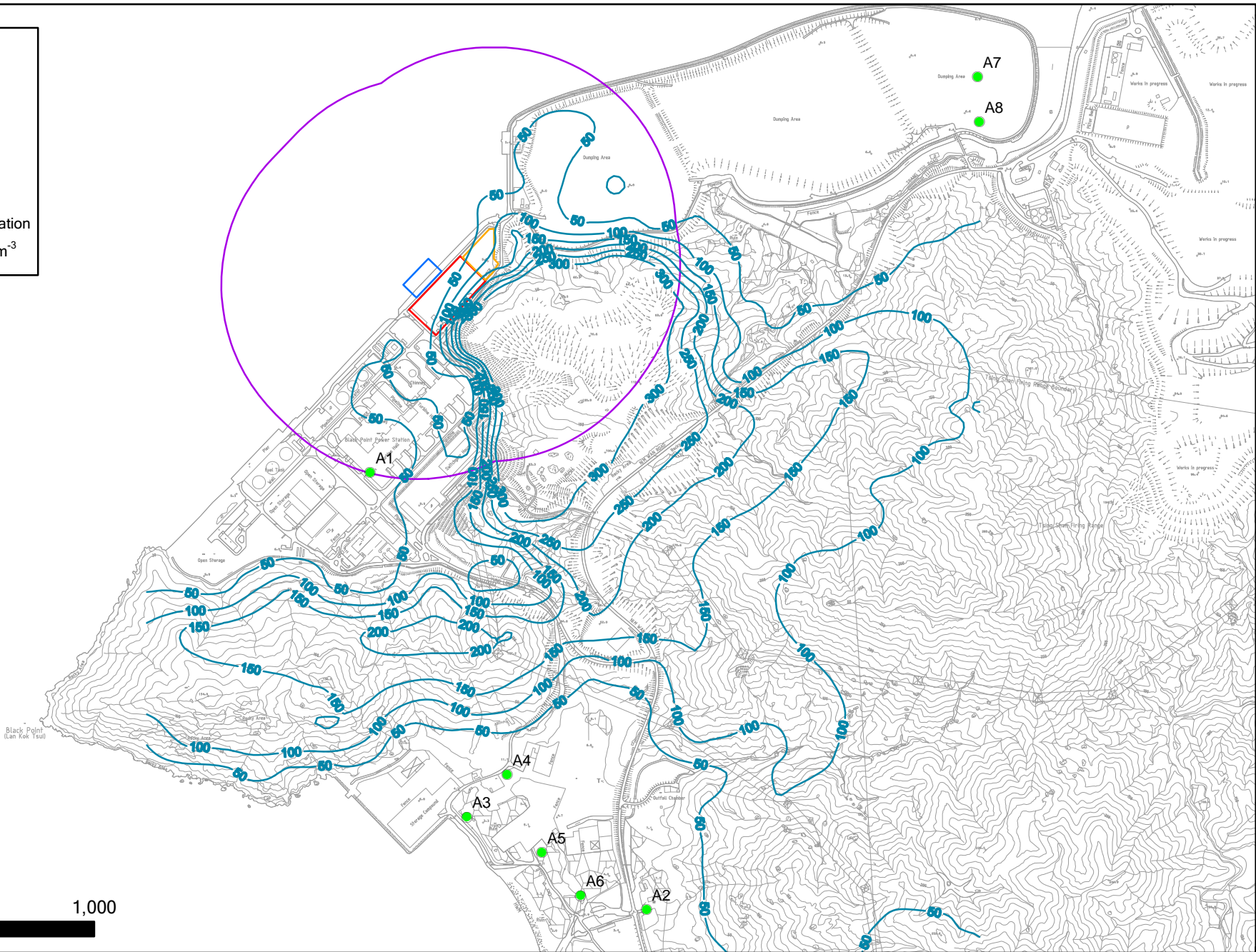


Figure 4.3a

Maximum Hourly NO₂ Concentration at 1.5m above ground
(Project Emission Only under Scenario 4)