

Key

- ASR
- ◻ 500m Study Area
- ◻ GRS Reclamation
- ◻ Co-located GRS
- ◻ Existing GRS
- Daily NO₂ Concentration

Note: Daily Criterion of NO₂ = 150µg^m-³

ASRs	Location
A1	Black Point Power Station - Administration Building
A2	Karting Track
A3	Open Storage - Site Office
A4	Concrete Batching Plant - Site Office
A5	Hong Kong Oil - Site Office
A6	Open Storage - Site Office
A7	Sludge Treatment Facility - Site Office
A8	WENT Landfill Extension Site Office

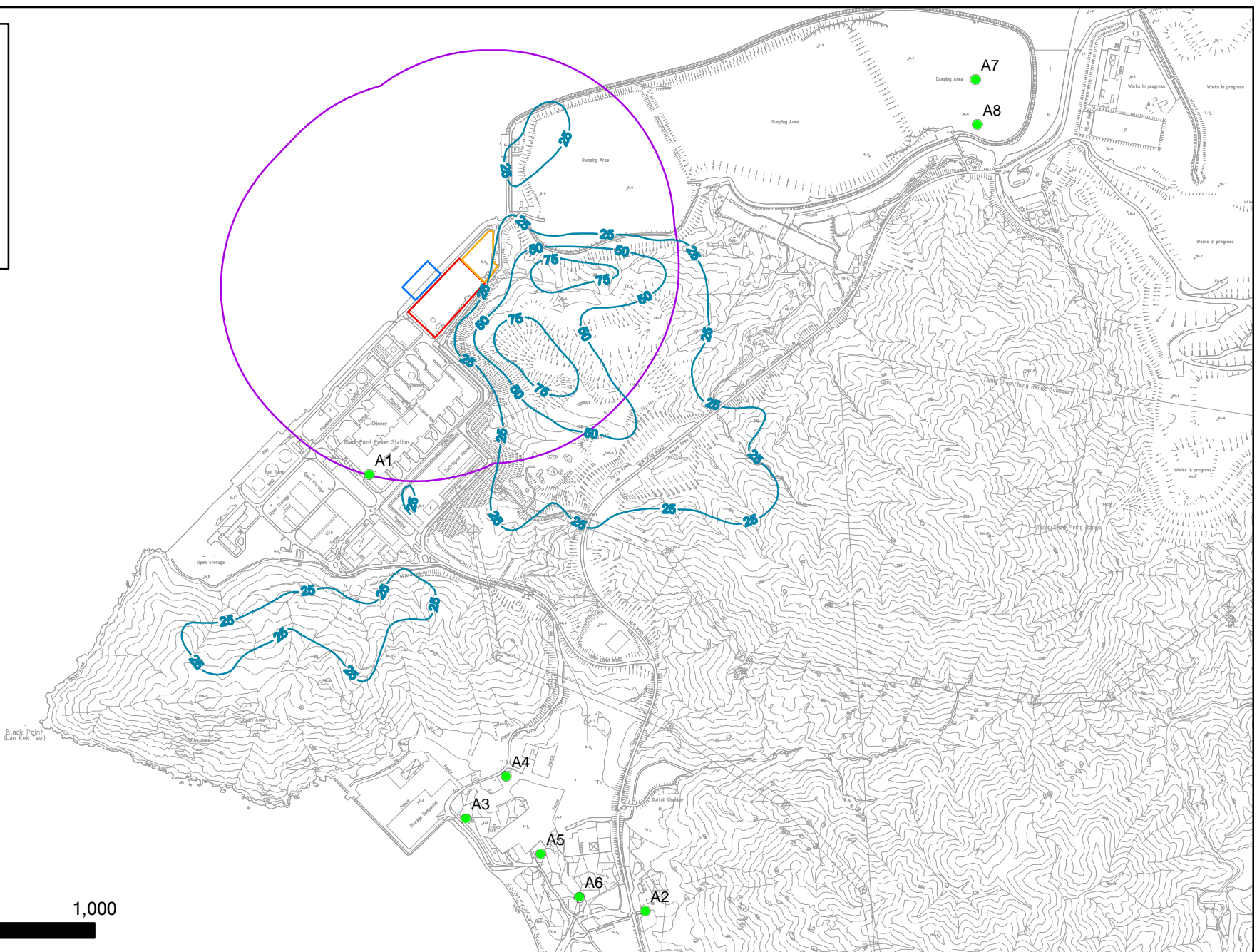


Figure 4.3b

Daily NO₂ Concentration at 1.5m above ground
(Project Emission Only under Scenario 4)

File: 08Feb2010\0104116_Daily NO2 1.5.mxd
Date: 08/02/2010

Environmental Resources Management