

**Key**

- ASR
  - 500m Study Area
  - GRS Reclamation
  - Co-located GRS
  - Existing GRS
  - Annual Average NO<sub>2</sub> Concentration
- Note: Annual Criterion of NO<sub>2</sub> = 80µgm<sup>-3</sup>

| ASRs | Location  |
|------|---|
| A1   | Black Point Power Station - Administration Building |
| A2   | Karting Track                                       |
| A3   | Open Storage - Site Office                          |
| A4   | Concrete Batching Plant - Site Office               |
| A5   | Hong Kong Oil - Site Office                         |
| A6   | Open Storage - Site Office                          |
| A7   | Sludge Treatment Facility - Site Office             |
| A8   | WENT Landfill Extension Site Office                 |

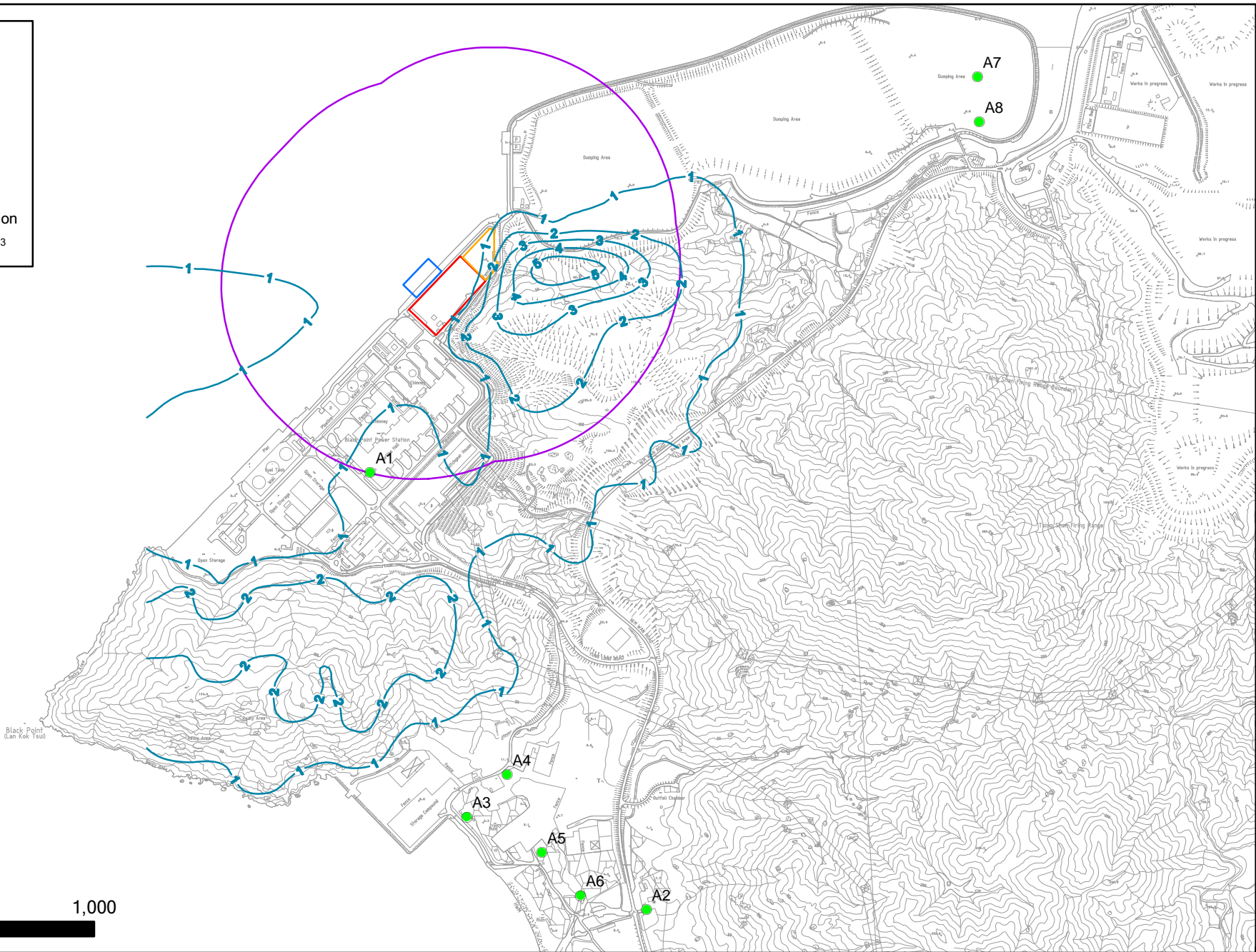


Figure 4.3c

Annual Average NO<sub>2</sub> Concentration at 1.5m above ground  
(Project Emission Only under Scenario 4)