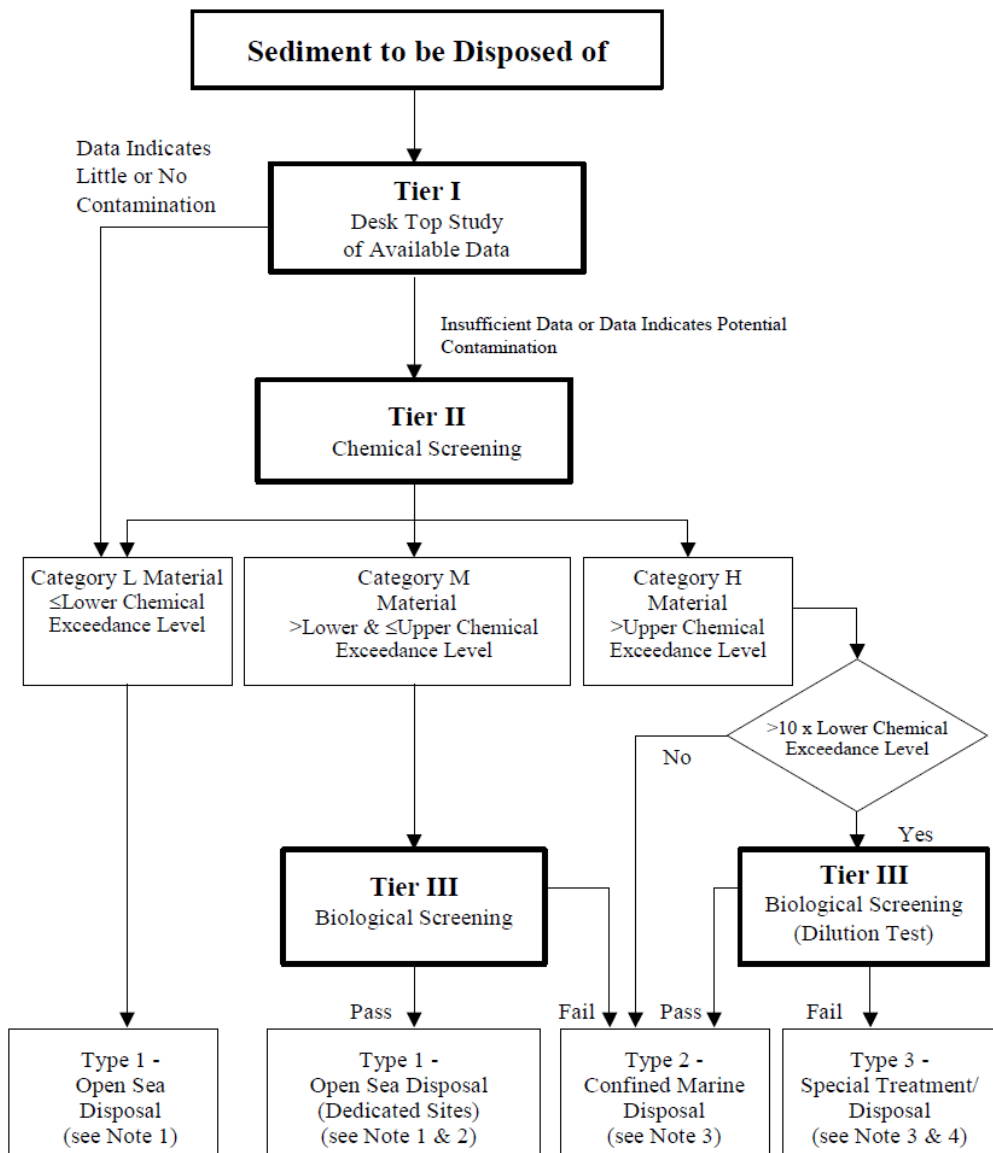


## Management Framework for Dredged/Excavated Sediment



**Notes:**

1. Most open sea disposal sites are multi-user facilities and as a consequence their management involves a flexibility to accommodate varying and unpredictable circumstances. Contract documents will include provisions to allow the same degree of flexibility to divert from one disposal site to another during the construction period of a contract.
2. Dedicated Sites will be monitored to confirm that there is no adverse impact.
3. For sediment requiring Type 2 or Type 3 disposal, contract documents will state the allocation conditions of Marine Fill Committee (MFC) and DEP. At present, East Sha Chau Mud Pits are designated for confined marine disposal.
4. If any sediment suitable for Type 3 disposal (Category H sediment failing the biological dilution test) is identified, it is the responsibility of the project proponent, in consultation with DEP, to identify and agree, the most appropriate treatment and/or disposal arrangement. Such a proposal is likely to be very site and project specific and therefore cannot be prescribed. This does not preclude treatment of this sediment to render it suitable for confined marine disposal.
5. The allocation of disposal space may carry a requirement for the project proponent to arrange for chemical analysis of the sediment sampled from 5% of the vessels en-route to the disposal site. For Category M and certain Category H sediment, the chemical tests will be augmented by biological tests. Vessel sampling will normally entail mixing five samples to form a composite sample from the vessel and undertaking laboratory tests on this composite sample. All marine disposal sites will be monitored under the general direction of the CEDD. However, exceptionally large allocations might require some additional disposal site monitoring. These will be stipulated at the time of allocation.
6. Trailer suction hopper dredgers disposing of sediment at the East of Sha Chau Mud Pits must use a down-a-pipe disposal method, the design of which must be approved in advance by Director of the CEDD. The dredging contractor must provide equipment for such disposal.

Source: Appendix C, ETWBTC(W) 34/2002

Figure 7.1

### Management Framework for Dredged/ Excavated Sediment Outlined under ETWBTC(W) No. 34/2002

FILE:  
DATE: 21/08/09

**Environmental  
Resources  
Management**

