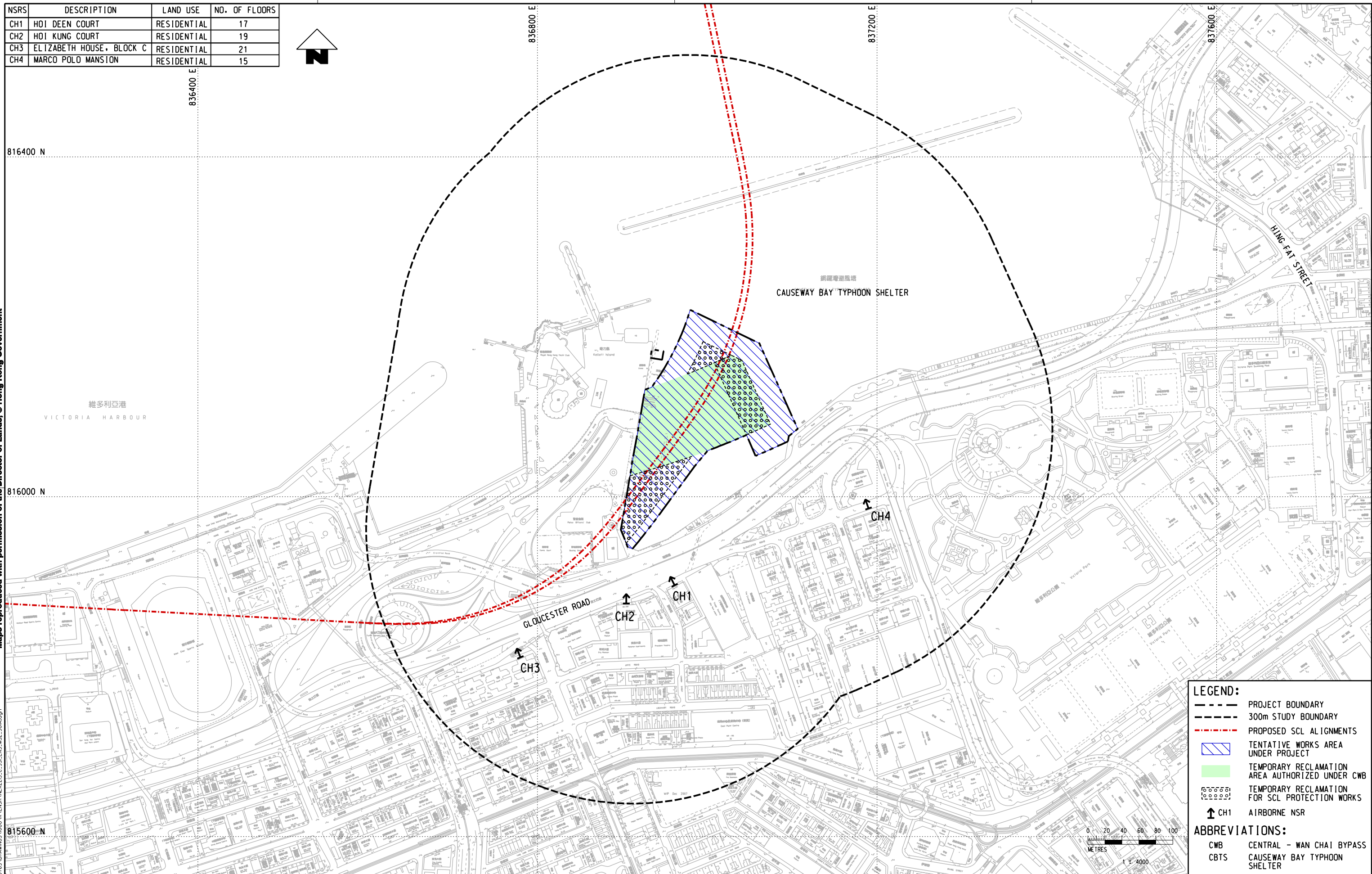


NSRS	DESCRIPTION	LAND USE	NO. OF FLOORS
CH1	HOI DEEN COURT	RESIDENTIAL	17
CH2	HOI KUNG COURT	RESIDENTIAL	19
CH3	ELIZABETH HOUSE, BLOCK C	RESIDENTIAL	21
CH4	MARCO POLO MANSION	RESIDENTIAL	15



Maps reproduced with permission of the Director of Lands, © Hong Kong Government



LEGEND:

- PROJECT BOUNDARY
- 300m STUDY BOUNDARY
- PROPOSED SCL ALIGNMENTS
- TENTATIVE WORKS AREA UNDER PROJECT
- TEMPORARY RECLAMATION AREA AUTHORIZED UNDER CWB
- TEMPORARY RECLAMATION FOR SCL PROTECTION WORKS
- CH1 AIRBORNE NSR

ABBREVIATIONS:

- CWB CENTRAL - WAN CHAI BYPASS
- CBTS CAUSEWAY BAY TYPHOON SHELTER

PLOT DRW: R:\us\mset\NTR\PI\OTDRIVER\WINDOWS\33 COLOUR.dwg
 MODELNAME: NEX2213_C_331_ENS_M52_501A.dgn
 FILENAME: NEX2213_C_331_ENS_M52_501A.dgn
 10:15:08
 2010-7-21
 PRINTED BY: DANK
 01/06/2010

REV	DESCRIPTION	BY	DATE	APPROVED	REV	DESCRIPTION	BY	DATE	APPROVED

DRAWN	YJP		SHATIN TO CENTRAL LINK 	TITLE	NEX/2213
DESIGNED	---			ORIGINATOR	EIA STUDY FOR SCL PROTECTION WORKS AT CBTS
CHECKED	---			DATE	LOCATIONS OF REPRESENTATIVE NOISE
APPROVED	---			01/JUN/2010	SENSITIVE RECEIVERS
<small>DO NOT SCALE DRAWINGS. ALL DIMENSIONS SHALL BE VERIFIED ON SITE. (C) MTR CORPORATION LIMITED 2008 COPYRIGHT IN RESPECT OF THIS DRAWING / DOCUMENT IS OWNED BY THE MTR CORPORATION LIMITED OF HONG KONG. NO REPRODUCTION OF THE DRAWING / DOCUMENT OR ANY PART BY WHATEVER MEANS IS PERMITTED WITHOUT THE PRIOR WRITTEN CONSENT OF THE MTR CORPORATION LIMITED.</small>				SCALE	1 : 4000 (A3)
CADD REF. NEX2213_C_331_ENS_M52_501A.dgn				FIGURE NO.	NEX2213/C/331/ENS/M52/501
				REV.	A