

Key

- Air Sensitive Receiver
 - Maximum Hourly TSP Concentration ($\mu\text{g}\text{m}^{-3}$)
 - Liantang BCP Source (Reduced Area)
 - Shenzhen River Emission Sources
 - Liantang BCP Source
 - Work Area I
 - Work Area II
 - Work Area III
- Note: Hourly TSP Criterion: $500\mu\text{g}\text{m}^{-3}$
No exceedance predicted at A11

Air Sensitive Receiver

A11	Tsung Yuen Ha
-----	---------------

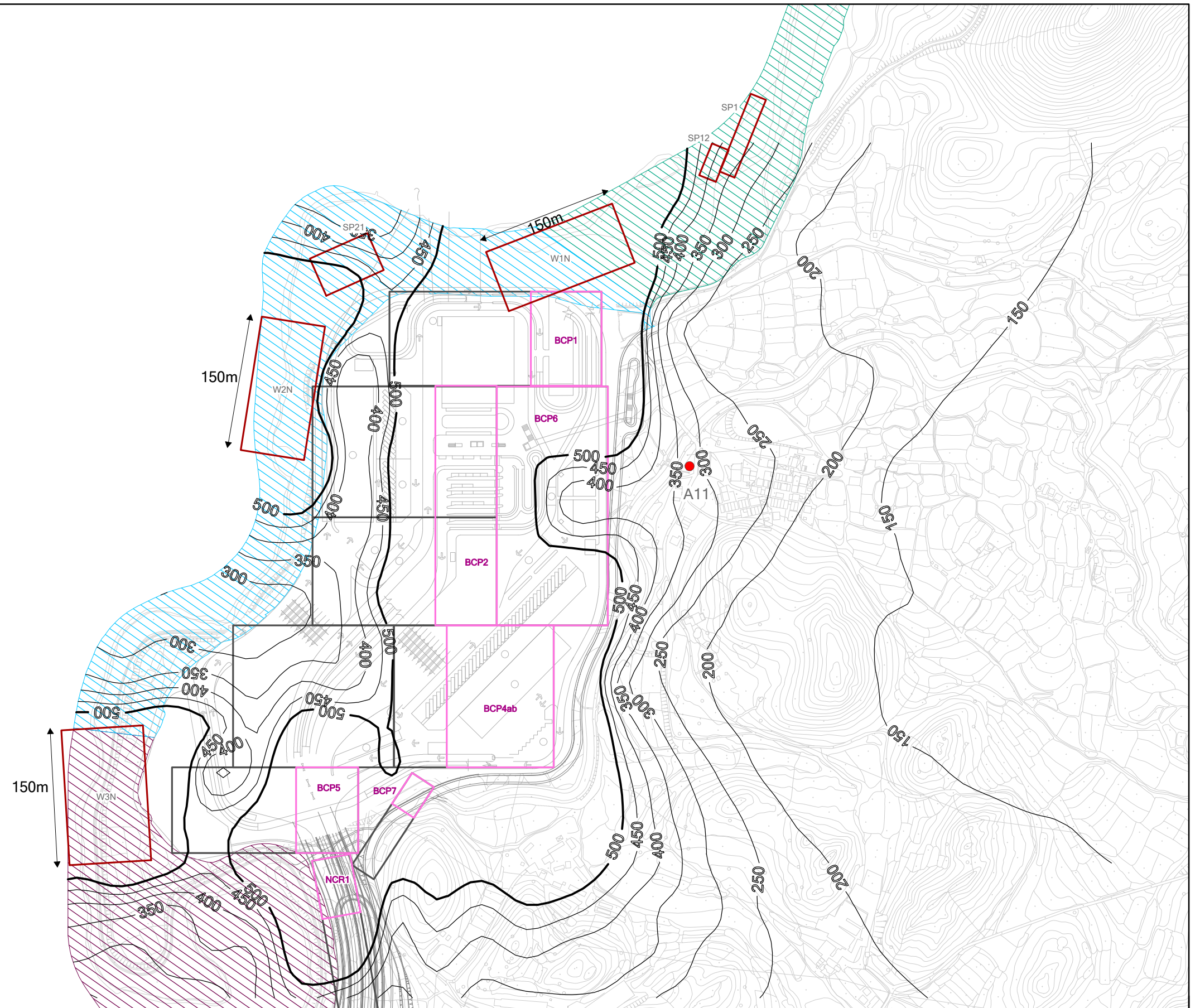


Figure 4.10 Mitigated Maximum Hourly TSP Concentration at 1.5m above ground (Scenario 2 - Active Works Areas Shift to North)

File: Final\0101759_dust09_northhourly.mxd
Date: 30/11/2010