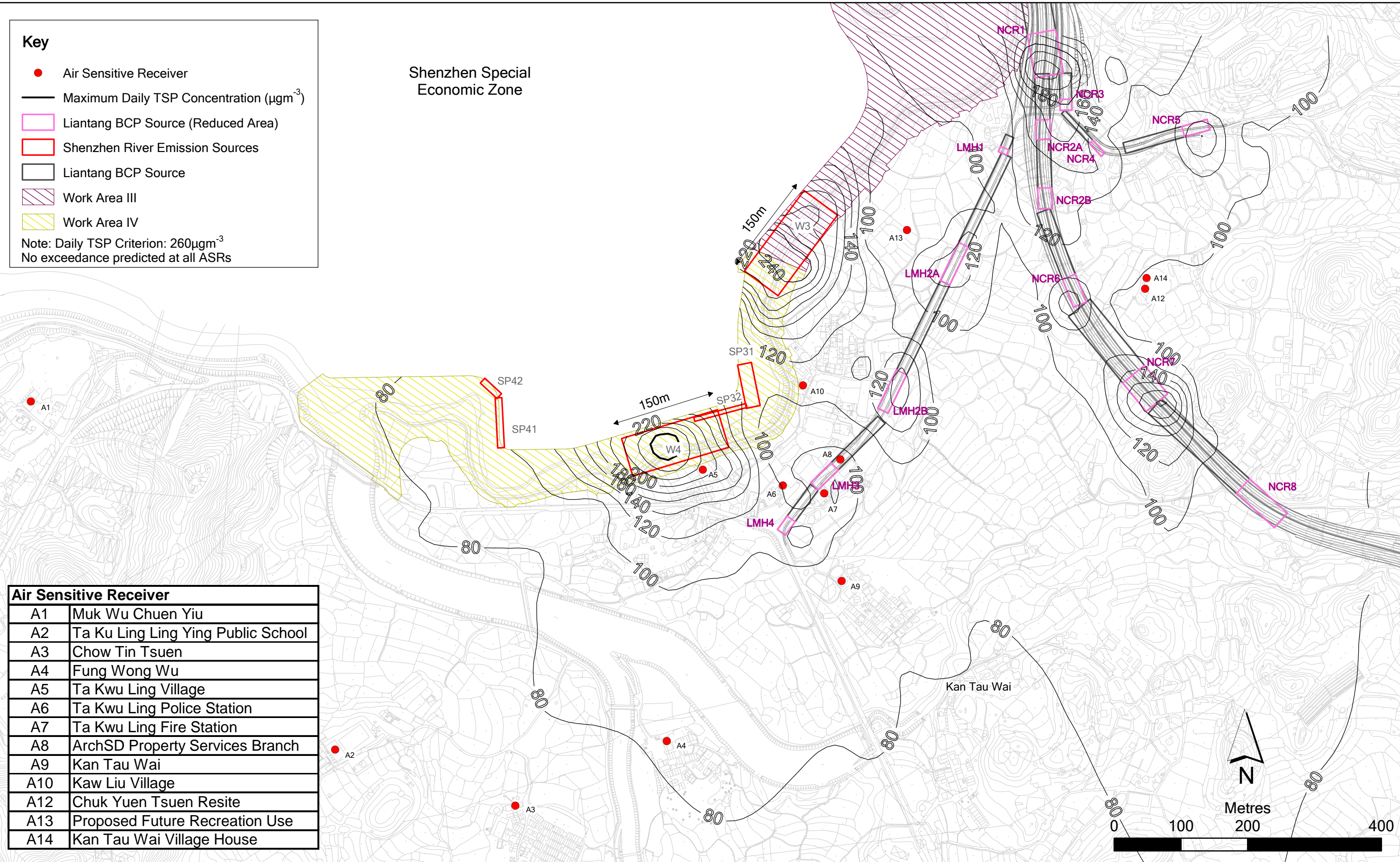


Key

- Air Sensitive Receiver
- Maximum Daily TSP Concentration ($\mu\text{g}\text{m}^{-3}$)
- Liantang BCP Source (Reduced Area)
- Shenzhen River Emission Sources
- Liantang BCP Source
- Work Area III
- Work Area IV

Note: Daily TSP Criterion: $260\mu\text{g}\text{m}^{-3}$
 No exceedance predicted at all ASRs

Shenzhen Special Economic Zone



Air Sensitive Receiver	
A1	Muk Wu Chuen Yiu
A2	Ta Ku Ling Ling Ying Public School
A3	Chow Tin Tsuen
A4	Fung Wong Wu
A5	Ta Kwu Ling Village
A6	Ta Kwu Ling Police Station
A7	Ta Kwu Ling Fire Station
A8	ArchSD Property Services Branch
A9	Kan Tau Wai
A10	Kaw Liu Village
A12	Chuk Yuen Tsuen Resite
A13	Proposed Future Recreation Use
A14	Kan Tau Wai Village House

Figure 4.9

Mitigated Maximum Daily TSP Concentration at 1.5m above ground
 (Scenario 1 - Active Works Areas Shift to South)

File: Final\0101759_dust09_southdaily.mxd
 Date: 29/11/2010