

**Key**

**Species of Conservation Interest**

**Bird - flying above**

- Besra
- Black Kite
- Bonelli's Eagle
- Chinese Pond Heron
- Common Buzzard
- Crested Goshawk
- Crested Serpent Eagle
- Greater Spotted Eagle
- Peregrine Falcon

**Bird**

- Asian Barred Owllet
- Besra
- Black-crowned Night Heron
- Cattle Egret
- Chinese Pond Heron
- Collared Crow
- Common Buzzard
- Common Teal
- Emerald Dove
- Great Egret
- Greater Coucal
- Greater Painted Snipe
- Grey Heron
- Intermediate Egret
- Japanese Sparrowhawk
- Lesser Coucal
- Little Egret
- Little Green Heron
- Savanna Nightjar
- White-breasted Waterhen
- Potential Breeding Ground for Greater Painted Snipe

**Invertebrate**

- Courtesan
- Hyaline Dusk-hawker

**Herpetofauna**

- Chinese Bullfrog

**Mammal**

- East Asian / Malayan Porcupine
- Leopard Cat Scats
- Small Indian Civet Scats
- Unidentified Bats

**Plant**

- Incense Tree

- Study Area (500m from Project Boundary within HKSAR)
- Study Area (200m from Project Boundary within Shenzhen)

**Project Site**

- Advanced Works Area (HKSAR)
- River Modification and Associated Works (HKSAR)
- River Modification and Associated Works (Shenzhen)

**Habitat**

- Secondary Woodland
- Fung Shui Woodland
- Plantation
- Shrubby Grassland
- Marshy Low-lying Grassland
- Low-lying Grassland
- Cultivated Land (Dry)
- Wet Active Agricultural Land
- Abandoned Agricultural Land
- Stream
- Channel
- Pond
- Developed Area

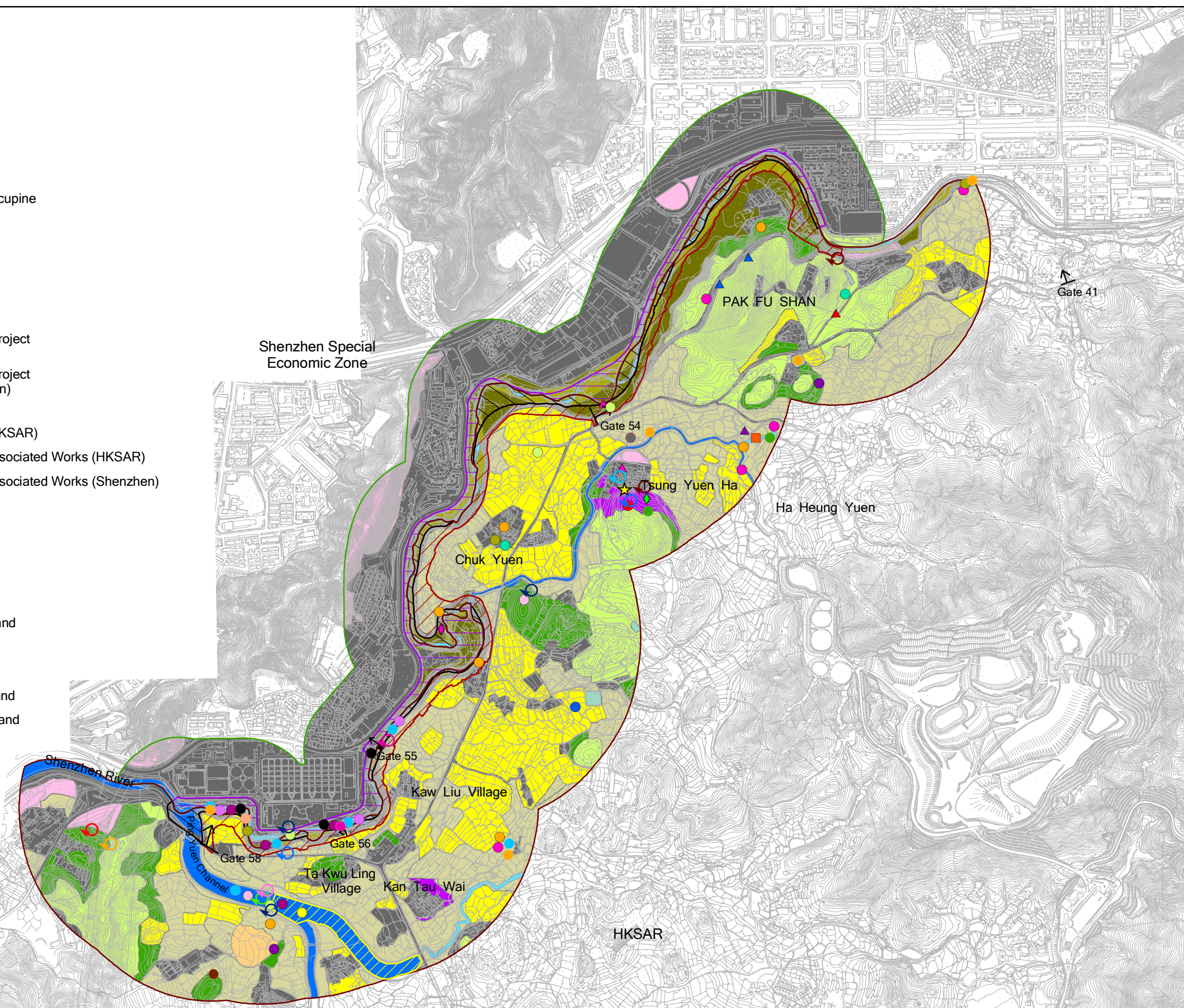


Figure 7.8

Species of Conservation Interest

File: Final\0101759\_Species of Conservation Interest.mxd  
Date: 28/06/2010