

說明:

1. [6.751] - 巡邏路高程, 除特別說明外均採用黃海高程(YSD), 河道左側範圍內新測高程為黃海高程, 黃海高程與香港PD高程的換算關係: $LmPD = LYSD + 0.854m$.
2. [6.751] - LEVEL OF BORDER ROAD, UNLESS OTHERWISE SPECIFIED, ALL LEVELS ARE IN YELLOW SEA ELEVATION(YSD), ALL NEW LEVELS WITHIN RIVER BOUNDARY ARE IN YSD. THE CONVERSION BETWEEN HK ELEVATION(mPD) AND YELLOW SEA ELEVATION(YSD) IS AS FOLLOWS: $HK\ ELEVATION(mPD) = YELLOW\ SEA\ ELEVATION(YSD) + 0.854m$.
3. 有關第一道圍網及第二道圍網的走線圖見圖號: 382841/B&V/BF/09-13. ALIGNMENTS OF THE PRIMARY BOUNDARY FENCE AND SECONDARY BOUNDARY FENCE ARE SHOWN IN DRAWINGS NOS. 382841/B&V/BF/09-13.
4. 有關巡邏路、檢修路的尺寸見圖號: 382841/B&V/BF/06. DIMENSIONS OF THE BORDER ROAD AND THE MAINTENANCE ACCESS ROAD ARE SHOWN IN DRAWING NO. 382841/B&V/BF/06.
5. 有關巡邏路的路面高程見河道橫斷面圖圖號: SZR-LTH-KY-ZD01-20. THE GROUND LEVEL OF BORDER ROAD ARE SHOWN IN DRAWINGS NOS. SZR-LTH-KY-ZD01-20.
6. 有關巡邏路的橫斷面圖圖號: 382841/B&V/BF/14-17. FOR DETAILS OF LONGITUDINAL PROFILE REFER TO DRAWING NOS. 382841/B&V/BF/14-17.

SETTING OUT OF BORDER ROAD				SETTING OUT OF BORDER ROAD			
POINTS	CO-ORDINATES	HORIZONTAL ALIGNMENT		POINTS	CO-ORDINATES	HORIZONTAL ALIGNMENT	
	EASTING	NORTHING			EASTING	NORTHING	
R1	832787.960	844568.956	STRAIGHT	R17	833120.923	844586.571	R=46m
R2	832784.821	844611.489	R=45m	R18	833160.567	844592.991	R=150m
R3	832829.411	844659.800	STRAIGHT	R19	833217.453	844617.347	R=101m
R4	832842.195	844659.882	R=45m	R20	833236.540	844623.162	R=50m
R5	832881.419	844637.444	STRAIGHT	R21	833253.132	844626.936	R=50m
R6	832896.036	844612.217	R=72m	R22	833269.267	844627.787	STRAIGHT
R7	832902.843	844602.436	R=100m	R23	833280.547	844629.692	STRAIGHT
R8	832914.588	844584.672	R=46m	R24	833327.057	844643.165	R=100m
R9	832956.020	844559.816	STRAIGHT	R25	833351.159	844653.754	R=75m
R10	832975.567	844560.061	R=50m	R26	833383.296	844741.778	STRAIGHT
R11	832990.491	844562.537	R=161.5m	R27	833379.027	844754.458	R=150m
R12	833005.322	844566.620	R=100m	R28	833372.877	844769.857	STRAIGHT
R13	833015.189	844569.375	STRAIGHT	R29	833364.748	844787.334	R=50m
R14	833030.633	844574.553	R=234	R30	833361.321	844797.373	R=93m
R15	833052.720	844579.268	R=50m	R31	833364.708	844843.376	STRAIGHT
R16	833093.091	844586.825		R32	833364.571	844894.623	
R17	833120.923	844586.571					

SETTING OUT				SETTING OUT			
POINTS	CO-ORDINATES			POINTS	CO-ORDINATES		
	EASTING	NORTHING			EASTING	NORTHING	
IP1	832781.279	844659.492		IP12	833142.303	844580.163	
IP2	832868.320	844660.049		IP13	833186.443	844611.165	
IP3	832899.034	844607.044		IP14	833227.285	844619.307	
IP4	832909.667	844594.183		IP15	833244.510	844626.482	
IP5	832927.634	844559.459		IP16	833275.016	844628.090	
IP6	832983.219	844560.157		IP17	833339.811	844646.859	
IP7	832997.809	844564.932		IP18	833402.439	844684.911	
IP8	833010.326	844567.745		IP19	833376.788	844762.328	
IP9	833041.409	844578.166		IP20	833362.499	844792.171	
IP10	833073.238	844581.268		IP21	833355.993	844820.892	
IP11	833107.044	844590.730					

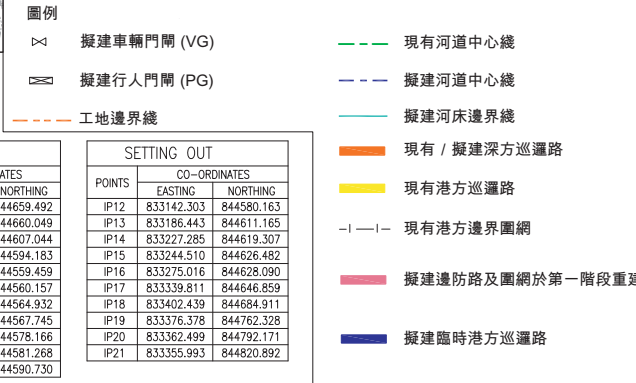
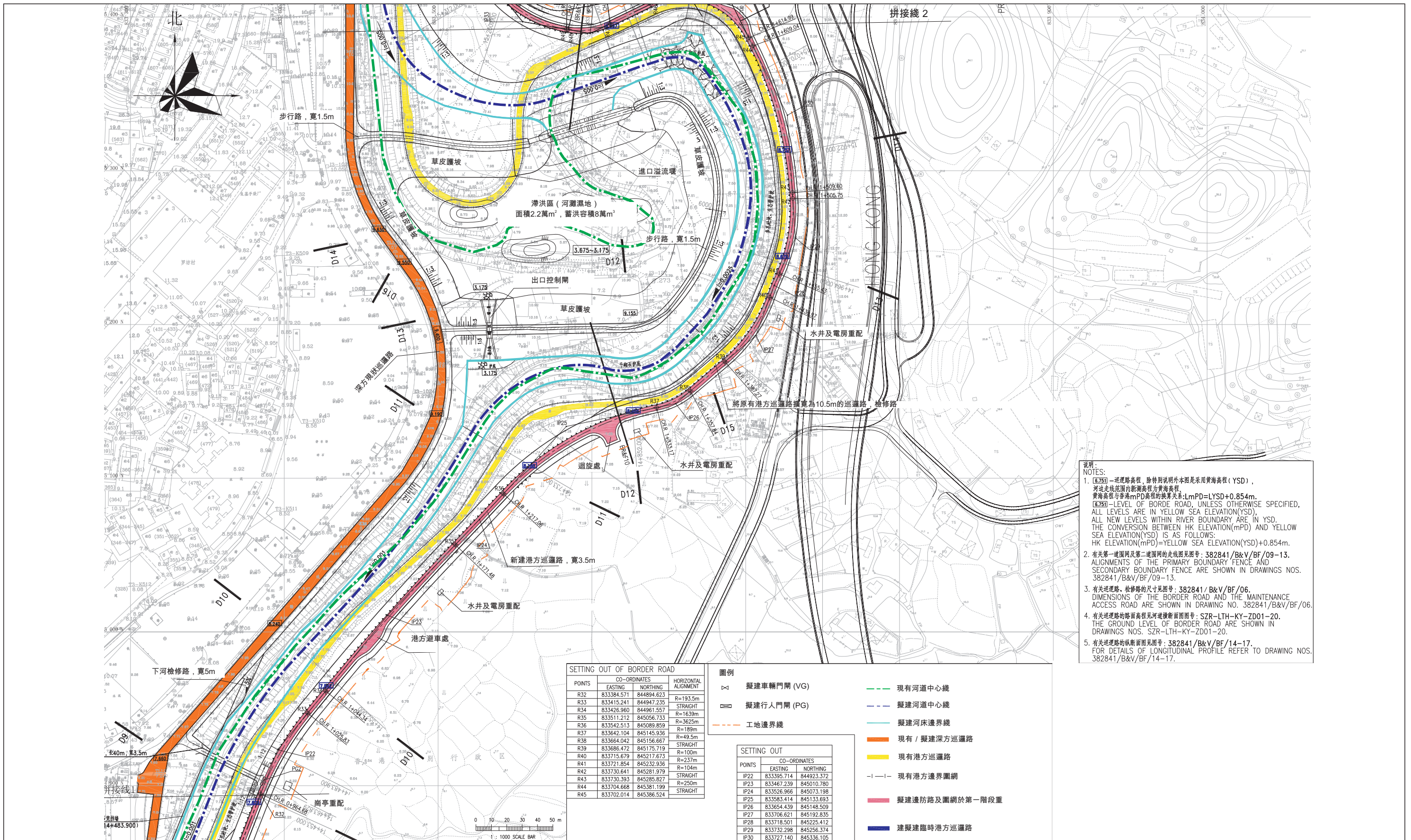


圖 2.1

香港側巡邏路及圍網平面佈置圖 (1/5)



- 說明:
- [6.750]—巡邏路高程，除特別說明外本圖是采用黃海高程(YSD)，河邊走線範圍內新測高程為黃海高程。黃海高程與香港mPD高程的換算關係： $LmPD=LYSD+0.854m$ 。
[6.750]—LEVEL OF BORDE ROAD, UNLESS OTHERWISE SPECIFIED, ALL LEVELS ARE IN YELLOW SEA ELEVATION(YSD), ALL NEW LEVELS WITHIN RIVER BOUNDARY ARE IN YSD. THE CONVERSION BETWEEN HK ELEVATION(mPD) AND YELLOW SEA ELEVATION(YSD) IS AS FOLLOWS:
 $HK ELEVATION(mPD)=YELLOW SEA ELEVATION(YSD)+0.854m$.
 - 有关第一道圍網及第二道圍網的走線圖見圖號：382841/B&V/BF/09-13。ALIGNMENTS OF THE PRIMARY BOUNDARY FENCE AND SECONDARY BOUNDARY FENCE ARE SHOWN IN DRAWINGS NOS. 382841/B&V/BF/09-13.
 - 有关巡邏路、檢修路尺寸見圖號：382841/B&V/BF/06。DIMENSIONS OF THE BORDER ROAD AND THE MAINTENANCE ACCESS ROAD ARE SHOWN IN DRAWING NO. 382841/B&V/BF/06.
 - 有关巡邏路的路面高程見河邊橫斷面圖圖號：SZR-LTH-KY-ZD01-20。THE GROUND LEVEL OF BORDER ROAD ARE SHOWN IN DRAWINGS NOS. SZR-LTH-KY-ZD01-20.
 - 有关巡邏路的縱斷面圖見圖號：382841/B&V/BF/14-17。FOR DETAILS OF LONGITUDINAL PROFILE REFER TO DRAWING NOS. 382841/B&V/BF/14-17.

SETTING OUT OF BORDER ROAD

POINTS	EASTING	NORTHING	HORIZONTAL ALIGNMENT
R32	833384.571	844894.623	R=193.5m
R33	833415.241	844947.235	STRAIGHT
R34	833426.960	844961.507	R=1639m
R35	833511.212	845056.733	R=3625m
R36	833542.513	845089.859	R=189m
R37	833642.104	845145.936	R=49.5m
R38	833664.042	845156.667	STRAIGHT
R39	833686.472	845175.719	R=100m
R40	833715.679	845217.673	R=237m
R41	833721.854	845232.936	R=104m
R42	833730.641	845281.979	STRAIGHT
R43	833730.393	845285.827	R=250m
R44	833704.668	845381.199	STRAIGHT
R45	833702.014	845386.524	STRAIGHT

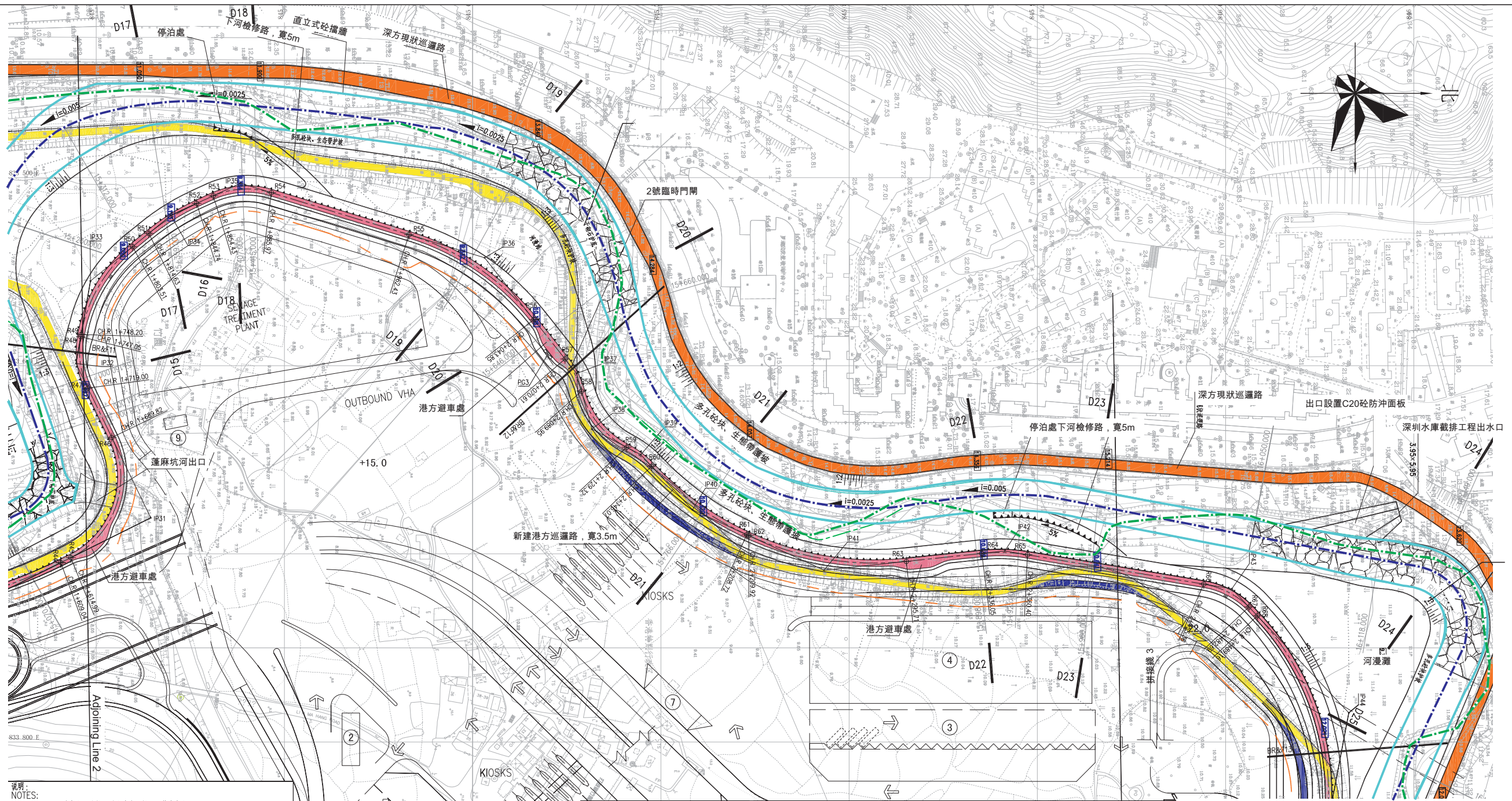
- 圖例
- 擬建車輛門閘 (VG)
 - 擬建行人門閘 (PG)
 - 工地邊界線
 - 現有河道中心線
 - 擬建河道中心線
 - 擬建河床邊界線
 - 現有 / 擬建深方巡邏路
 - 現有港方巡邏路
 - 現有港方邊界圍網
 - 擬建邊防路及圍網於第一階段重
 - 擬建臨時港方巡邏路

SETTING OUT

POINTS	EASTING	NORTHING
IP22	833395.714	844923.372
IP23	833467.239	845010.780
IP24	833526.966	845073.198
IP25	833583.414	845133.693
IP26	833654.439	845148.509
IP27	833706.621	845192.835
IP28	833718.501	845225.412
IP29	833732.298	845256.374
IP30	833727.140	845336.105

圖 2.2 香港側巡邏路及圍網平面佈置圖 (2/5)

FILE: 0101759z8_2
DATE: 15/09/2010



- NOTES:
- [6.750]—巡邏路高程, 除特別說明外本圖是采用黃海高程(YSD), 河道走線範圍內新測高程為黃海高程。黃海高程與香港mPD高程的換算關係: $LmPD = LYSD + 0.854m$ 。
[6.750]—LEVEL OF BORDER ROAD, UNLESS OTHERWISE SPECIFIED, ALL LEVELS ARE IN YELLOW SEA ELEVATION(YSD). ALL NEW LEVELS WITHIN RIVER BOUNDARY ARE IN YSD. THE CONVERSION BETWEEN HK ELEVATION(mPD) AND YELLOW SEA ELEVATION(YSD) IS AS FOLLOWS:
 $HK ELEVATION(mPD) = YELLOW SEA ELEVATION(YSD) + 0.854m$.
 - 有关第一道圍網及第二道圍網的走線圖見圖號: 382841/B&V/BF/09-13. ALIGNMENTS OF THE PRIMARY BOUNDARY FENCE AND SECONDARY BOUNDARY FENCE ARE SHOWN IN DRAWINGS NOS. 382841/B&V/BF/09-13.
 - 有关巡邏路、檢修路的尺寸見圖號: 382841/B&V/BF/06. DIMENSIONS OF THE BORDER ROAD AND THE MAINTENANCE ACCESS ROAD ARE SHOWN IN DRAWING NO. 382841/B&V/BF/06.
 - 有关巡邏路的路面高程見河道橫斷面圖圖號: SZR-LTH-KY-ZD01-20. THE GROUND LEVEL OF BORDER ROAD ARE SHOWN IN DRAWINGS NOS. SZR-LTH-KY-ZD01-20.
 - 有关巡邏路的縱斷面圖圖號: 382841/B&V/BF/14-17. FOR DETAILS OF LONGITUDINAL PROFILE REFER TO DRAWING NOS. 382841/B&V/BF/14-17.

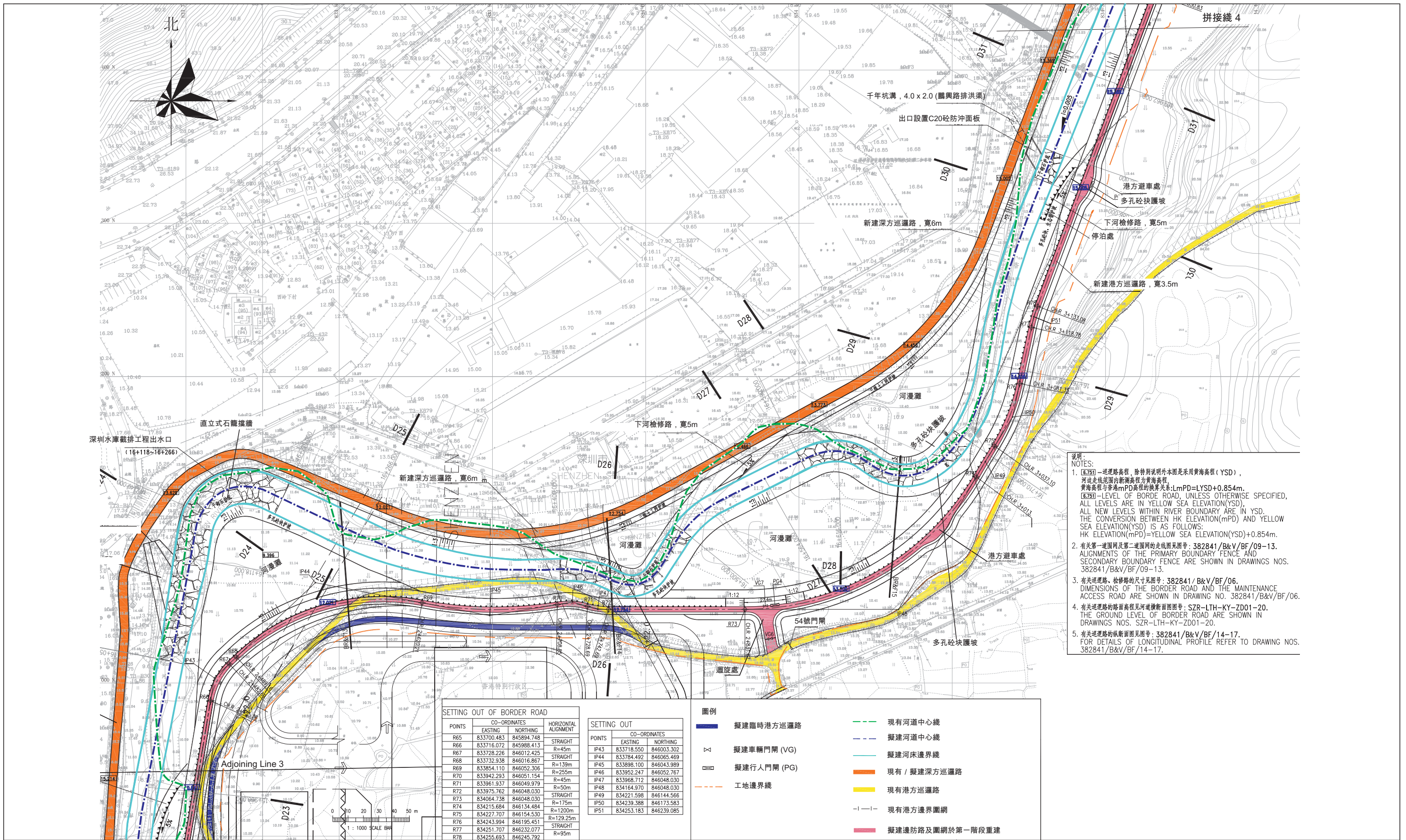
SETTING OUT OF BORDER ROAD			
POINTS	CO-ORDINATES		HORIZONTAL ALIGNMENT
	EASTING	NORTHING	
R45	833702.014	845386.524	R=48m
R46	833638.147	845408.322	STRAIGHT
R47	833611.879	845395.613	R=45m
R48	833584.550	845391.789	STRAIGHT
R49	833583.421	845391.986	R=77.5m
R50	833536.691	845419.332	STRAIGHT
R51	833529.657	845427.950	R=120m
R52	833513.732	845453.404	STRAIGHT
R53	833509.658	845462.203	R=45m
R54	833507.991	845493.052	STRAIGHT
R55	833530.323	845566.179	R=135m
R56	833575.464	845632.454	STRAIGHT
R57	833596.418	845649.100	R=48m
R58	833613.548	845657.798	R=48m
R59	833643.347	845681.818	R=50m
R60	833653.434	845695.092	R=162m
R61	833699.811	845745.627	STRAIGHT
R62	833690.311	845745.716	R=160m
R63	833704.019	845830.368	STRAIGHT
R64	833699.764	845870.480	R=90m
R65	833700.483	845894.748	

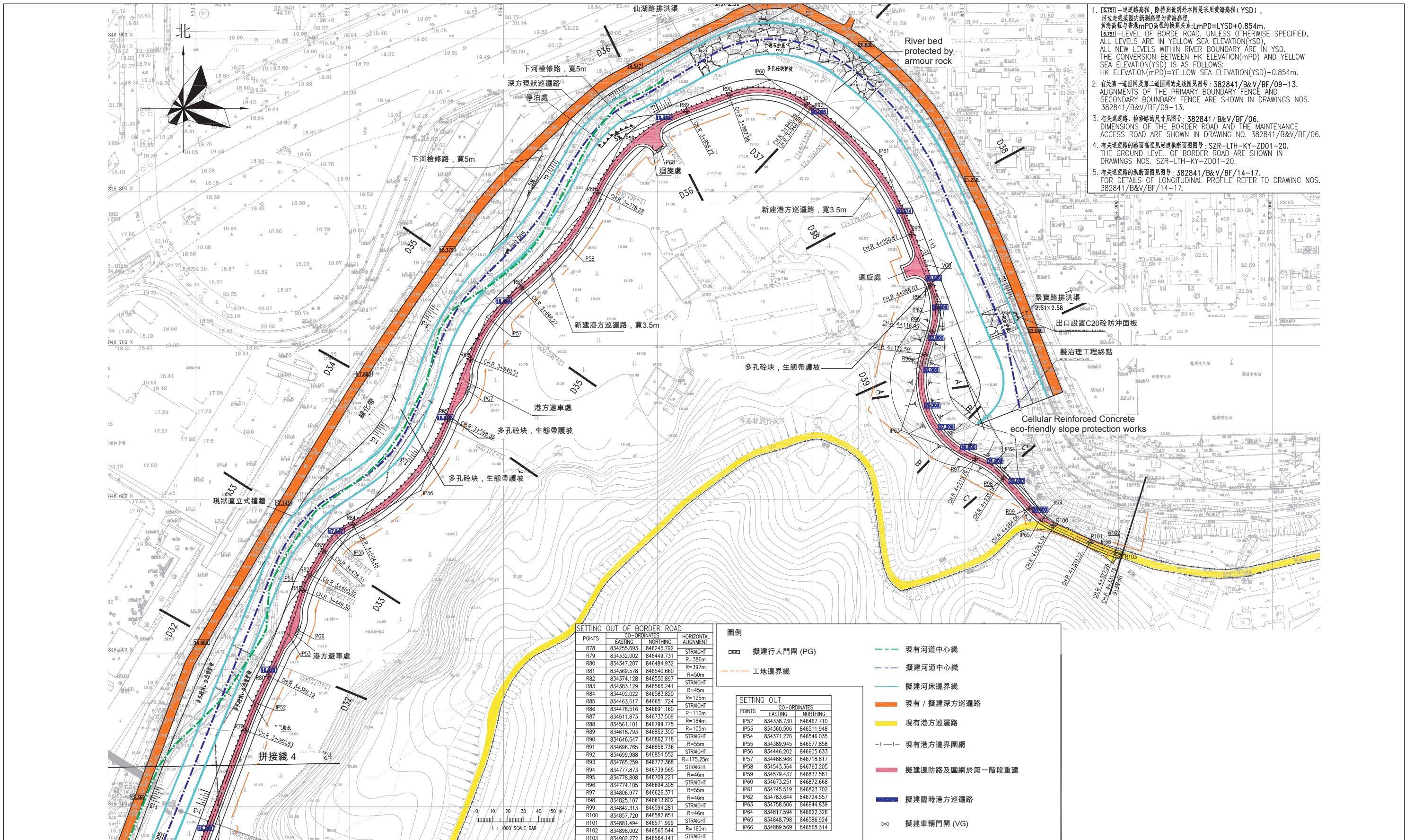
圖例

- 擬建車輛門閘 (VG)
- 擬建行人門閘 (PG)
- 工地邊界線
- 現有河道中心線
- 擬建河道中心線
- 擬建河床邊界線
- 現有 / 擬建深方巡邏路
- 現有港方巡邏路
- 現有港方邊界圍網
- 擬建邊防路及圍網於第一階段重建
- 擬建臨時港方巡邏路

SETTING OUT		
POINTS	CO-ORDINATES	
	EASTING	NORTHING
IP31	833680.853	845428.985
IP32	833598.831	845389.299
IP33	833554.959	845396.949
IP34	833520.090	845439.673
IP35	833502.977	845476.633
IP36	833542.587	845606.337
IP37	833604.095	845655.199
IP38	833633.669	845663.331
IP39	833637.268	845689.308
IP40	833676.570	845716.798
IP41	833708.655	845786.659
IP42	833698.472	845827.663

圖 2.3 香港側巡邏路及圍網平面佈置圖 (3/5)





1. [圖例] 一巡邏路高程，除特別說明外本圖是採用黃海高程 (YSD)，河道走向範圍內新測高程為黃海高程。黃海高程與香港mPD高程的換算公式： $LmPD = LYSD + 0.854m$ 。
[圖例] LEVEL OF BORDER ROAD, UNLESS OTHERWISE SPECIFIED, ALL LEVELS ARE IN YELLOW SEA ELEVATION (YSD), ALL LEVELS WITHIN RIVER BOUNDARY ARE IN YSD. THE CONVERSION BETWEEN HK ELEVATION (mPD) AND YELLOW SEA ELEVATION (YSD) IS AS FOLLOWS:
 $HK ELEVATION (mPD) = YELLOW SEA ELEVATION (YSD) + 0.854m$.
2. 有關第一道圍網及第二道圍網的走線見圖號：382841/B&V/BF/09-13。ALIGNMENTS OF THE PRIMARY BOUNDARY FENCE AND SECONDARY BOUNDARY FENCE ARE SHOWN IN DRAWINGS NOS. 382841/B&V/BF/09-13.
3. 有關巡邏路、檢修路的尺寸見圖號：382841/B&V/BF/06。DIMENSIONS OF THE BORDER ROAD AND THE MAINTENANCE ACCESS ROAD ARE SHOWN IN DRAWING NO. 382841/B&V/BF/06.
4. 有關巡邏路的路面高程見河道橫斷面圖號：SZR-LTH-KY-ZD01-20。THE GROUND LEVEL OF BORDER ROAD ARE SHOWN IN DRAWINGS NOS. SZR-LTH-KY-ZD01-20.
5. 有關巡邏路的橫斷面圖號：382841/B&V/BF/14-17。FOR DETAILS OF LONGITUDINAL PROFILE REFER TO DRAWING NOS. 382841/B&V/BF/14-17.

SETTING OUT OF BORDER ROAD			
POINTS	CO-ORDINATES		HORIZONTAL ALIGNMENT
R78	834255.693	846245.792	STRAIGHT
R79	834332.002	846449.731	R=386m
R80	834347.207	846484.932	R=397m
R81	834369.578	846540.660	R=50m
R82	834374.128	846550.897	STRAIGHT
R83	834383.129	846566.241	R=45m
R84	834402.022	846583.820	R=125m
R85	834463.617	846651.724	STRAIGHT
R86	834478.516	846691.160	R=110m
R87	834511.873	846737.509	R=184m
R88	834561.101	846799.775	R=105m
R89	834618.793	846852.300	STRAIGHT
R90	834646.647	846862.718	R=55m
R91	834696.765	846886.736	STRAIGHT
R92	834699.988	846884.552	R=175.25m
R93	834765.259	846772.368	STRAIGHT
R94	834777.873	846739.565	R=46m
R95	834778.808	846709.221	STRAIGHT
R96	834774.105	846694.308	R=55m
R97	834806.977	846626.371	R=46m
R98	834825.107	846613.802	STRAIGHT
R99	834842.313	846594.281	R=46m
R100	834857.720	846582.851	STRAIGHT
R101	834881.494	846571.999	R=160m
R102	834898.002	846565.544	STRAIGHT
R103	834902.272	846564.141	STRAIGHT

圖例

- 擬建行人門閘 (PG)
- 工地區界線
- 現有河道中心線
- 擬建河道中心線
- 擬建河床邊界線
- 現有 / 擬建深方巡邏路
- 現有港方巡邏路
- 現有港方邊界圍網
- 擬建邊防路及圍網於第一階段重建
- 擬建臨時港方巡邏路
- 擬建車輛門閘 (VG)

SETTING OUT		
POINTS	CO-ORDINATES	
IP52	834338.730	846467.710
IP53	834360.506	846511.948
IP54	834371.276	846546.035
IP55	834389.945	846577.858
IP56	834446.202	846605.633
IP57	834488.966	846718.817
IP58	834543.364	846783.205
IP59	834579.437	846837.581
IP60	834673.251	846872.668
IP61	834745.519	846823.702
IP62	834783.644	846724.557
IP63	834758.506	846644.839
IP64	834817.594	846622.326
IP65	834848.798	846586.924
IP66	834889.569	846568.314

圖 2.5

香港側巡邏路及圍網平面佈置圖 (5/5)

FILE: 0101759z8_5
DATE: 17/09/2010