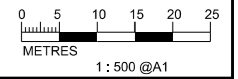


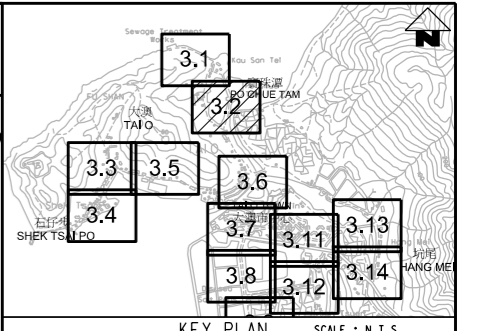
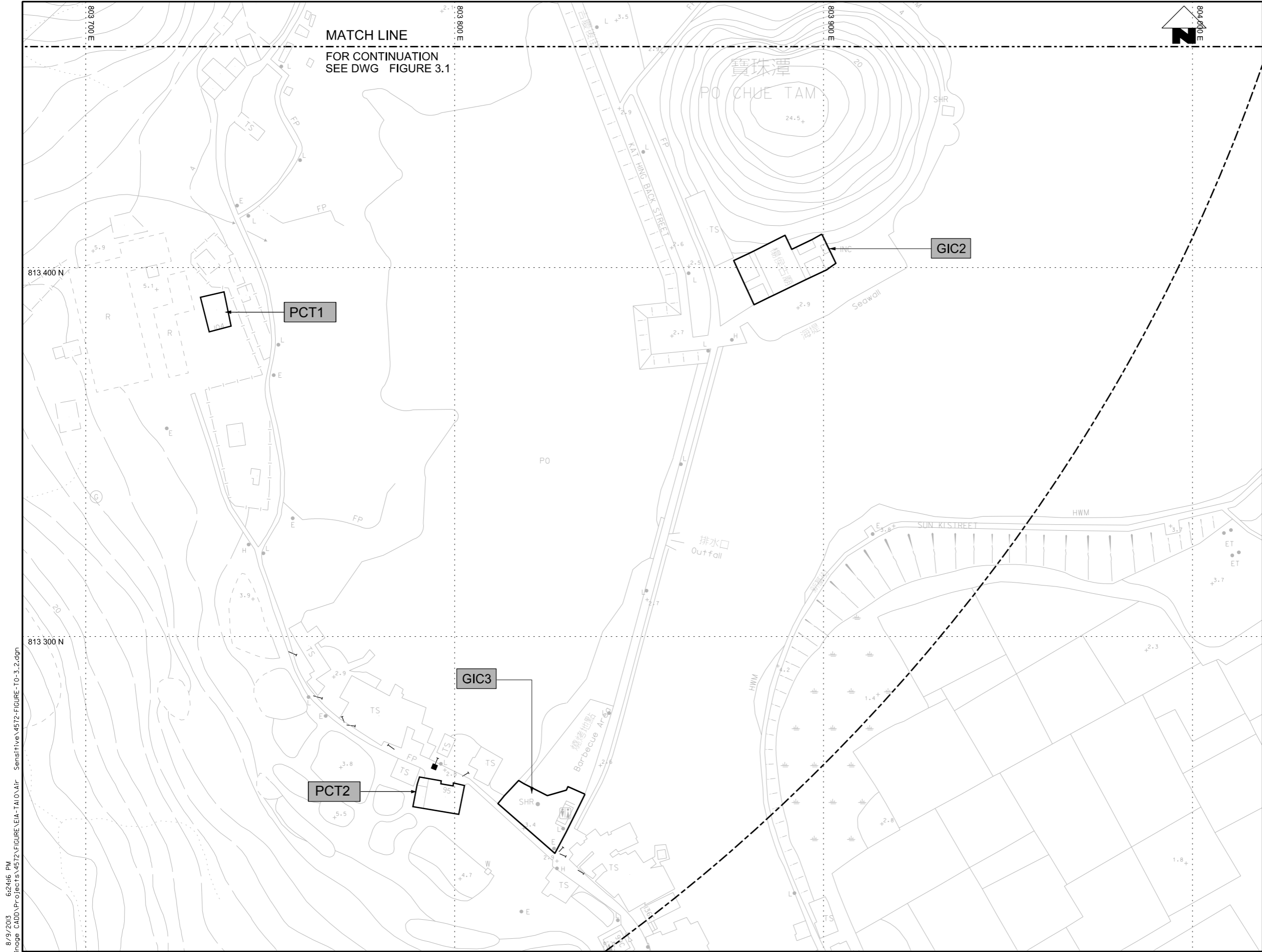
- LEGEND AND ABBREVIATION:
- Proposed Sewer
  - Proposed Manhole
  - Proposed Rising Main
  - Proposed Tapping Pipe (subject to consultation with owners of houses with topographical problem)
  - Proposed Sewage Pumping Station
  - Label for Air Sensitive Receiver
  - 500m Radius Boundary of Tai O STW, Hang Mei SPS and Fan Kwai Tong SPS



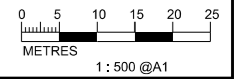
PRINTED BY: cheu8306 8/9/2013 6:24:15 PM  
 FILENAME: F:\CHINA\Up\orange\_CADD\Project\IS\4572\FIGURE\EA-TAI O\Air\_Sensitive\4572-FIGURE-TO-3-1.dgn

Agreement No. CE 15/2010 (DS)  
 Upgrading of Cheung Chau and Tai O Sewerage Collection, Treatment and Disposal Facilities - Design and Construction  
**Outlying Islands Sewerage Stage 2 -**  
 Upgrading of Tai O Sewerage Collection, Treatment and Disposal Facilities

Title :	<b>AIR SENSITIVE RECEIVERS</b> (Sheet 1 of 14)		
Date :	<b>MAY 2015</b>	Figure :	<b>3.1</b>



- LEGEND AND ABBREVIATION:
- Proposed Sewer
  - Proposed Manhole
  - Proposed Rising Main
  - Proposed Tapping Pipe (subject to consultation with owners of houses with topographical problem)
  - Proposed Sewage Pumping Station
  - Label for Air Sensitive Receiver
  - 500m Radius Boundary of Tai O STW, Hang Mei SPS and Fan Kwai Tong SPS



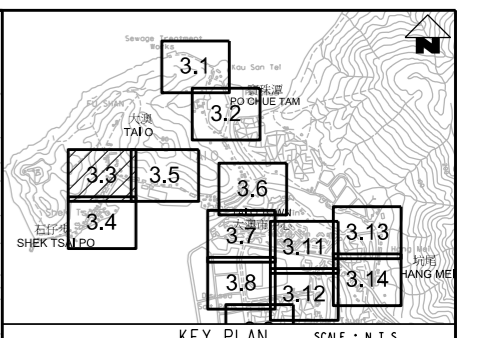
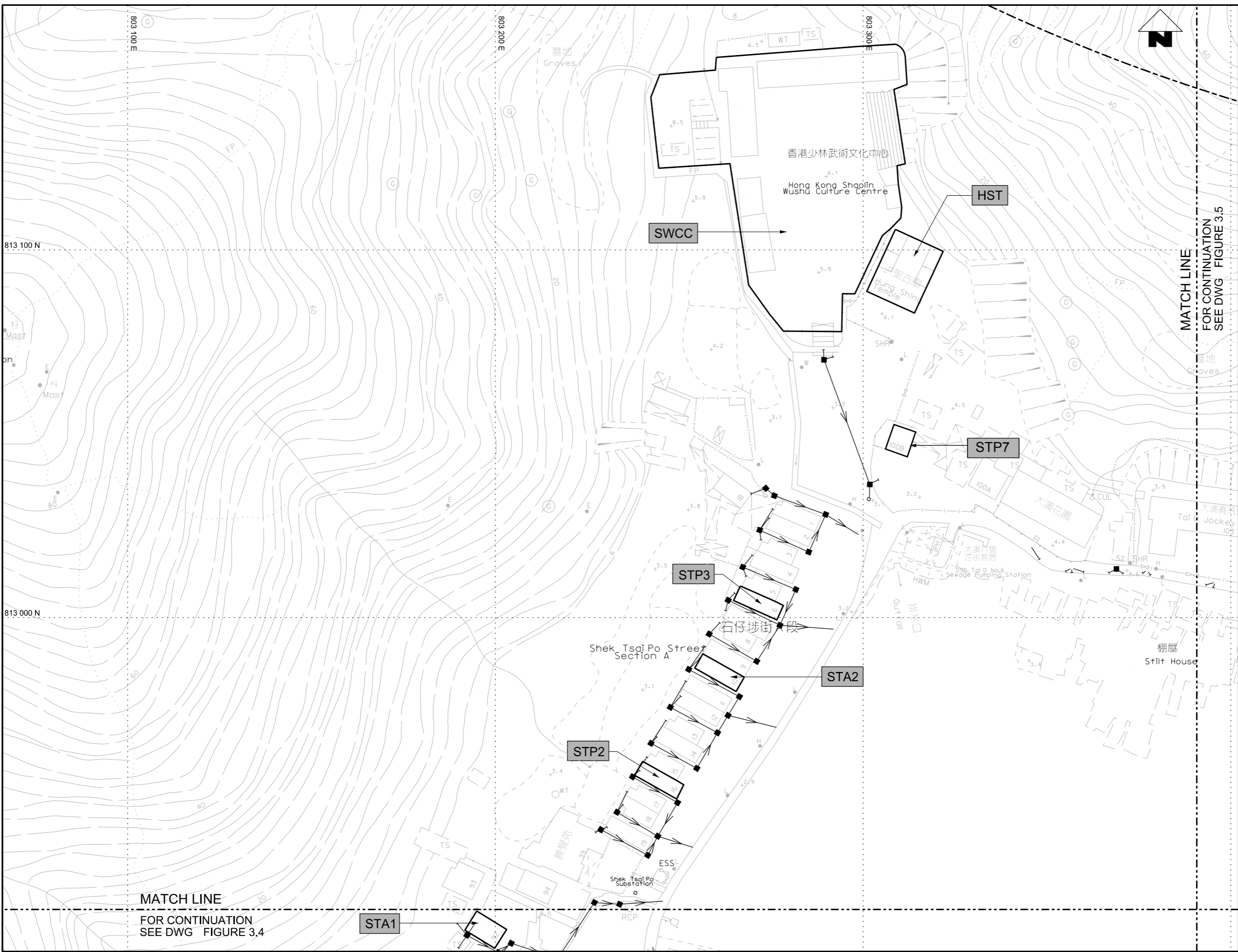
PRINTED BY: cheu8306 8/9/2013 6:24:16 PM  
 FILENAME: F:\CHINA\up\orange\_CADD\Project\IS\4572\FIGURE\EA-TAI O\Air\_Sensitive\4572-FIGURE-TO-3-2.dgn



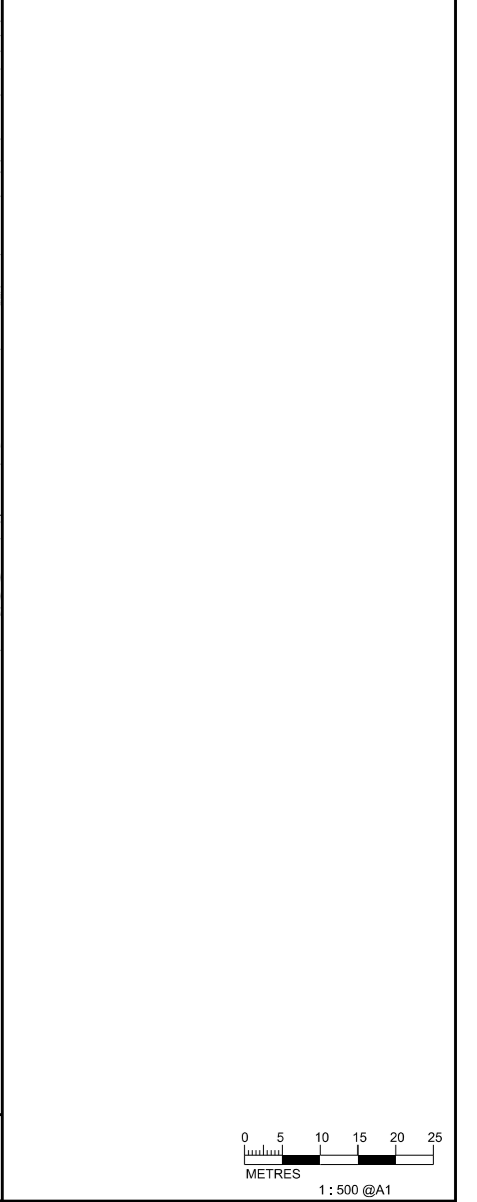
Agreement No. CE 15/2010 (DS)  
 Upgrading of Cheung Chau and Tai O Sewerage Collection, Treatment and Disposal Facilities - Design and Construction  
**Outlying Islands Sewerage Stage 2 -**  
 Upgrading of Tai O Sewerage Collection, Treatment and Disposal Facilities

Title :	AIR SENSITIVE RECEIVERS (Sheet 2 of 14)		
Date :	MAY 2015	Figure :	3.2

PRINTED BY: cheu8306 8/9/2015 6:24:17 PM  
 FILENAME: F:\CHINA\Drainage\_CADD\Project\54572\FIGURE\EA-TAI\Air\_Sensitive\54572-FIGURE-T0-3\_3.dgn



- LEGEND AND ABBREVIATION:
- Proposed Sewer
  - Proposed Manhole
  - Proposed Rising Main
  - Proposed Tapping Pipe (subject to consultation with owners of houses with topographical problem)
  - Proposed Sewage Pumping Station
  - Label for Air Sensitive Receiver
  - 500m Radius Boundary of Tai O STW, Hang Mei SPS and Fan Kwai Tong SPS



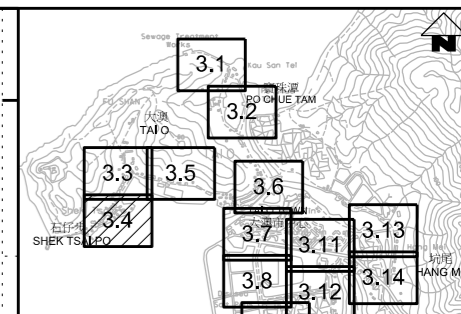
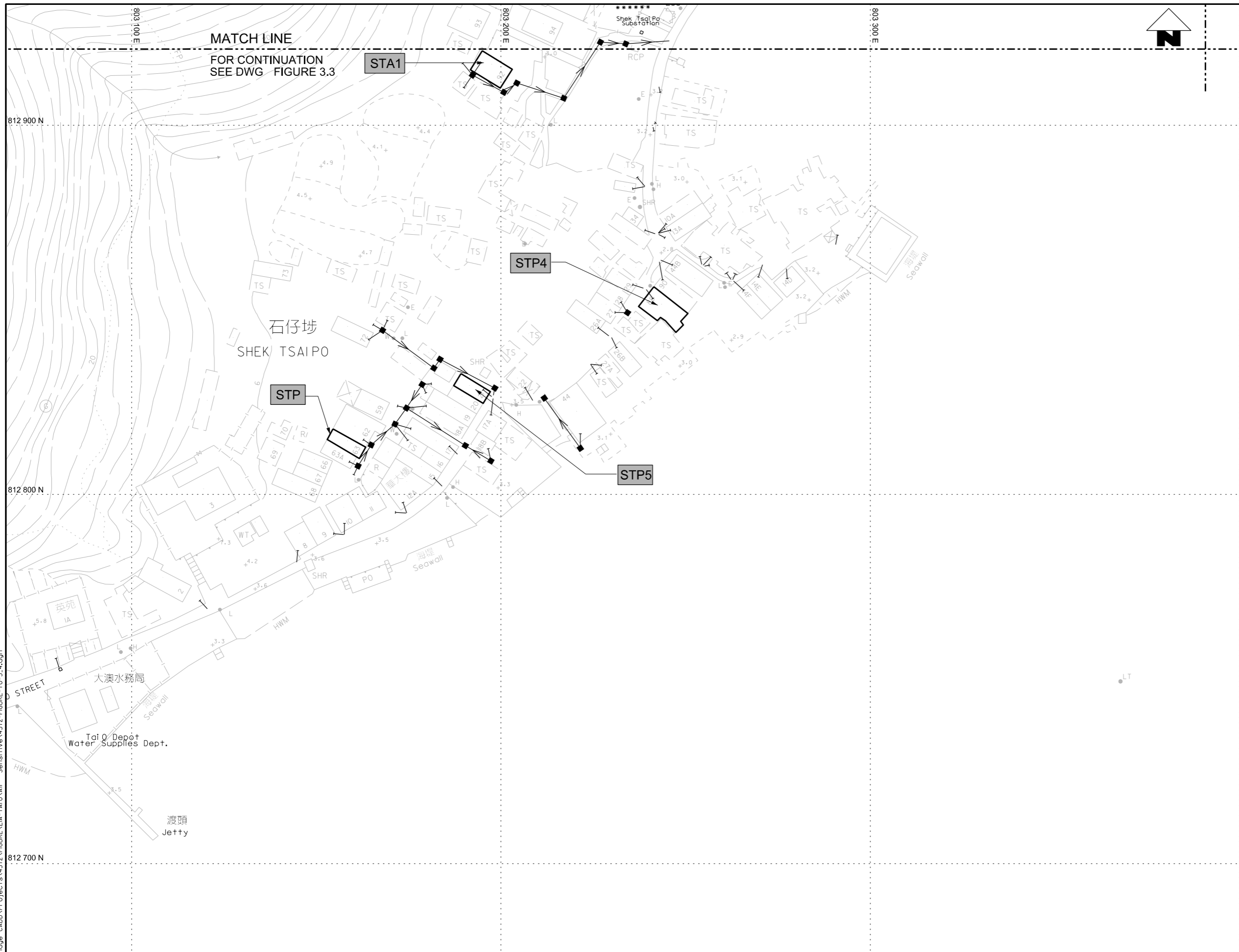
MATCH LINE  
 FOR CONTINUATION  
 SEE DWG FIGURE 3.4

MATCH LINE  
 FOR CONTINUATION  
 SEE DWG FIGURE 3.5



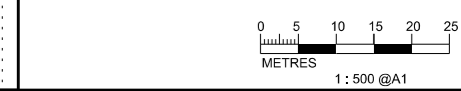
Agreement No. CE 15/2010 (DS)  
 Upgrading of Cheung Chau and Tai O Sewerage Collection, Treatment and Disposal Facilities - Design and Construction  
 Outlying Islands Sewerage Stage 2 -  
 Upgrading of Tai O Sewerage Collection, Treatment and Disposal Facilities

Title :	AIR SENSITIVE RECEIVERS (Sheet 3 of 14)		
Date :	MAY 2015	Figure :	3.3



KEY PLAN SCALE : N.T.S.

- LEGEND AND ABBREVIATION:
- Proposed Sewer
  - Proposed Manhole
  - Proposed Rising Main
  - Proposed Tapping Pipe (subject to consultation with owners of houses with topographical problem)
  - Proposed Sewage Pumping Station
  - Label for Air Sensitive Receiver
  - 500m Radius Boundary of Tai O STW, Hang Mei SPS and Fan Kwai Tong SPS

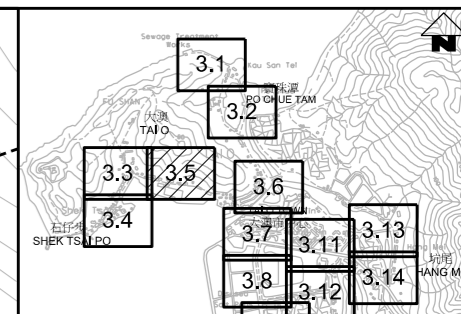


PRINTED BY: cheu8306 8/9/2013 6:24:18 PM  
 FILENAME: F:\CHINA\ur\image CAD\Project\IS\4572\FIGURE\EA-TAI O\Air\_Sensitive\4572-FIGURE-T0-3-4.dgn



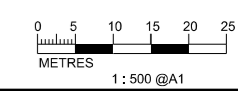
Agreement No. CE 15/2010 (DS)  
 Upgrading of Cheung Chau and Tai O Sewerage Collection, Treatment and Disposal Facilities - Design and Construction  
**Outlying Islands Sewerage Stage 2 -**  
 Upgrading of Tai O Sewerage Collection, Treatment and Disposal Facilities

Title :	<b>AIR SENSITIVE RECEIVERS</b> (Sheet 4 of 14)		
Date :	MAY 2015	Figure :	3.4



KEY PLAN SCALE : N.T.S.

- LEGEND AND ABBREVIATION:
- Proposed Sewer
  - Proposed Manhole
  - Proposed Rising Main
  - Proposed Tapping Pipe (subject to consultation with owners of houses with topographical problem)
  - Proposed Sewage Pumping Station
  - Label for Air Sensitive Receiver
  - 500m Radius Boundary of Tai O STW, Hang Mei SPS and Fan Kwai Tong SPS

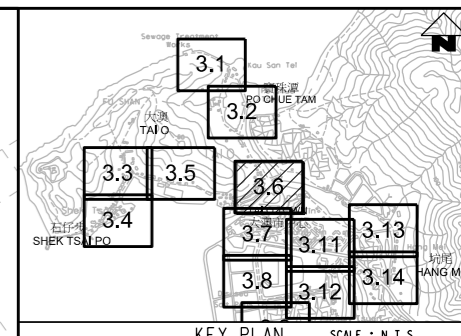
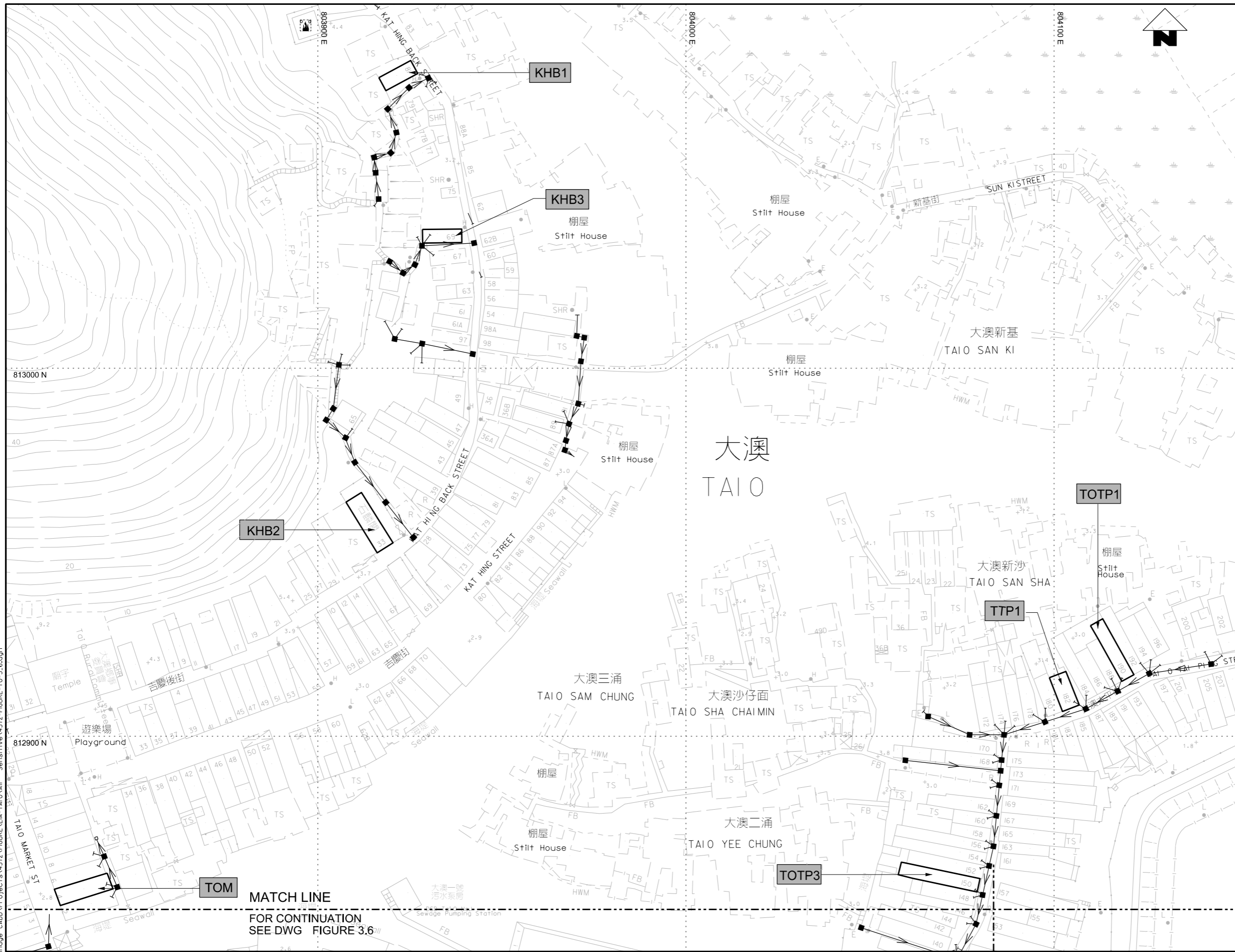


PRINTED BY: cheu8306 8/9/2013 6:24:19 PM  
 FILENAME: F:\CHINA\up\orange\_CADD\Project\15\4572\FIGURE\EA-TAI O\AIR\_Sensitive\4572-FIGURE-TO-3.5.dgn



Agreement No. CE 15/2010 (DS)  
 Upgrading of Cheung Chau and Tai O Sewerage Collection, Treatment and Disposal Facilities - Design and Construction  
**Outlying Islands Sewerage Stage 2 -**  
 Upgrading of Tai O Sewerage Collection, Treatment and Disposal Facilities

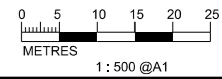
Title :	<b>AIR SENSITIVE RECEIVERS</b> (Sheet 5 of 14)		
Date :	MAY 2015	Figure :	3.5

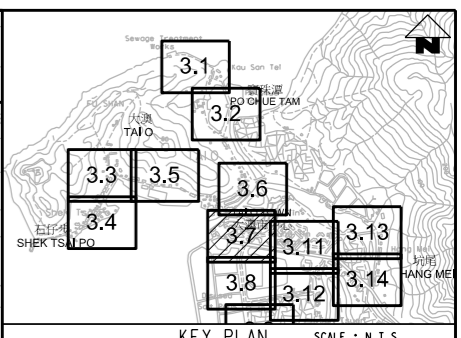
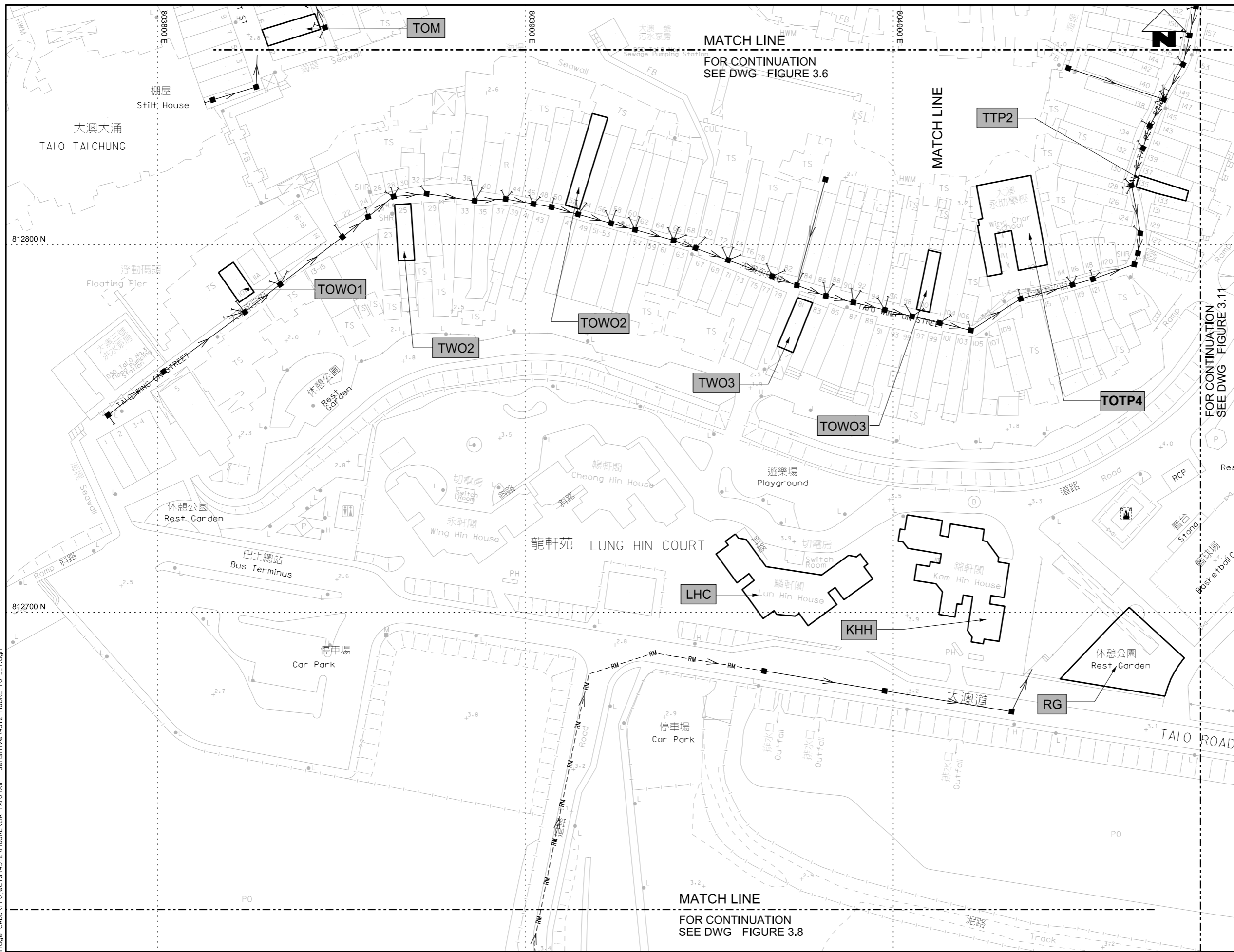


- LEGEND AND ABBREVIATION:
- Proposed Sewer
  - Proposed Manhole
  - Proposed Rising Main
  - Proposed Tapping Pipe (subject to consultation with owners of houses with topographical problem)
  - Proposed Sewage Pumping Station
  - Label for Air Sensitive Receiver
  - 500m Radius Boundary of Tai O STW, Hang Mei SPS and Fan Kwai Tong SPS

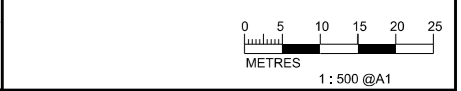
PRINTED BY: cheu8306 8/9/2013 6:24:20 PM  
 FILENAME: F:\CHINA\Up drainage\_CADD\Project\3.6\FIGURE-1A-TAI O\Air\_Sensitive\4572-FIGURE-TO-3.6.dgn

MATCH LINE  
 FOR CONTINUATION  
 SEE DWG FIGURE 3.6





- LEGEND AND ABBREVIATION:
- Proposed Sewer
  - Proposed Manhole
  - Proposed Rising Main
  - Proposed Tapping Pipe (subject to consultation with owners of houses with topographical problem)
  - Proposed Sewage Pumping Station
  - Label for Air Sensitive Receiver
  - 500m Radius Boundary of Tai O STW, Hang Mei SPS and Fan Kwai Tong SPS

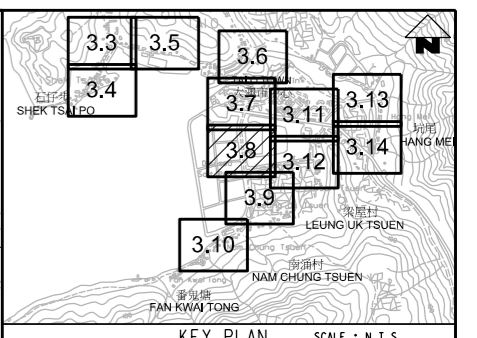
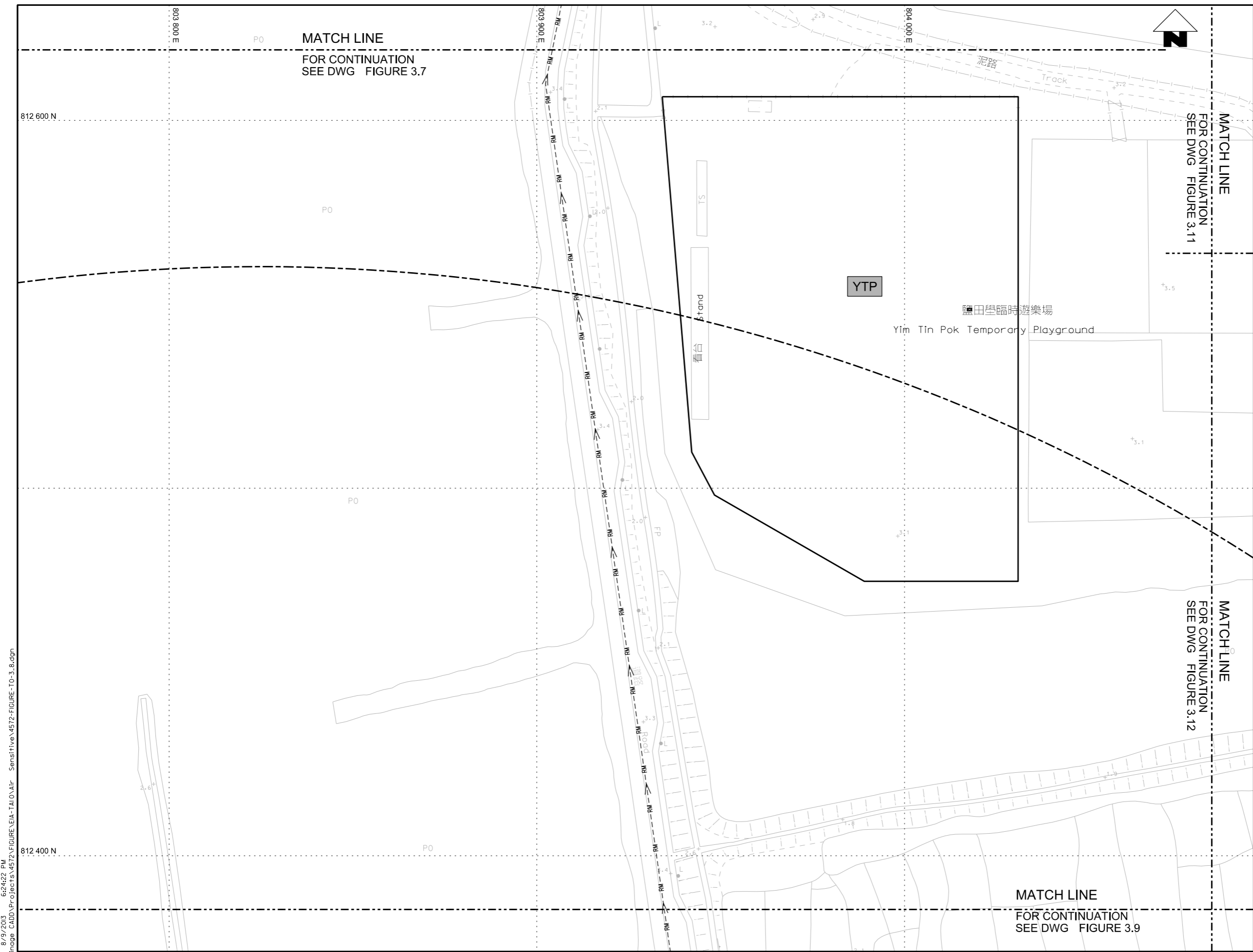


PRINTED BY: cheu8306 8/9/2013 6:24:21PM  
 FILENAME: F:\CHINA\up\image\_CADD\Project\IS\4572\FIGURE\EA-TAI O\Air\_Sensitive\4572-FIGURE-TO-3\_7.dgn



Agreement No. CE 15/2010 (DS)  
 Upgrading of Cheung Chau and Tai O Sewerage Collection, Treatment and Disposal Facilities - Design and Construction  
**Outlying Islands Sewerage Stage 2 -**  
 Upgrading of Tai O Sewerage Collection, Treatment and Disposal Facilities

Title :	<b>AIR SENSITIVE RECEIVERS</b> (Sheet 7 of 14)		
Date :	MAY 2015	Figure :	3.7



- LEGEND AND ABBREVIATION:
- Proposed Sewer
  - Proposed Manhole
  - Proposed Rising Main
  - Proposed Tapping Pipe (subject to consultation with owners of houses with topographical problem)
  - Proposed Sewage Pumping Station
  - Label for Air Sensitive Receiver
  - 500m Radius Boundary of Tai O STW, Hang Mei SPS and Fan Kwai Tong SPS



PRINTED BY: chreub306 8/9/2013 6:24:22 PM  
 FILENAME: F:\CHINA\Drainage\_CADD\Project\IS\4572\FIGURE\AIA-TAI O\Air\_Sensitive\4572-FIGURE-TO-3-8.dgn

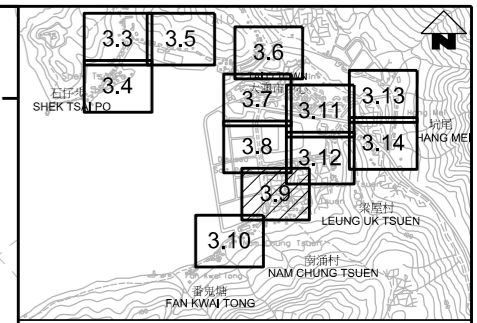
Agreement No. CE 15/2010 (DS)  
 Upgrading of Cheung Chau and Tai O Sewerage Collection, Treatment and Disposal Facilities - Design and Construction  
**Outlying Islands Sewerage Stage 2 -**  
 Upgrading of Tai O Sewerage Collection, Treatment and Disposal Facilities

Title :		<b>AIR SENSITIVE RECEIVERS</b> (Sheet 8 of 14)	
Date :	MAY 2015	Figure :	3.8



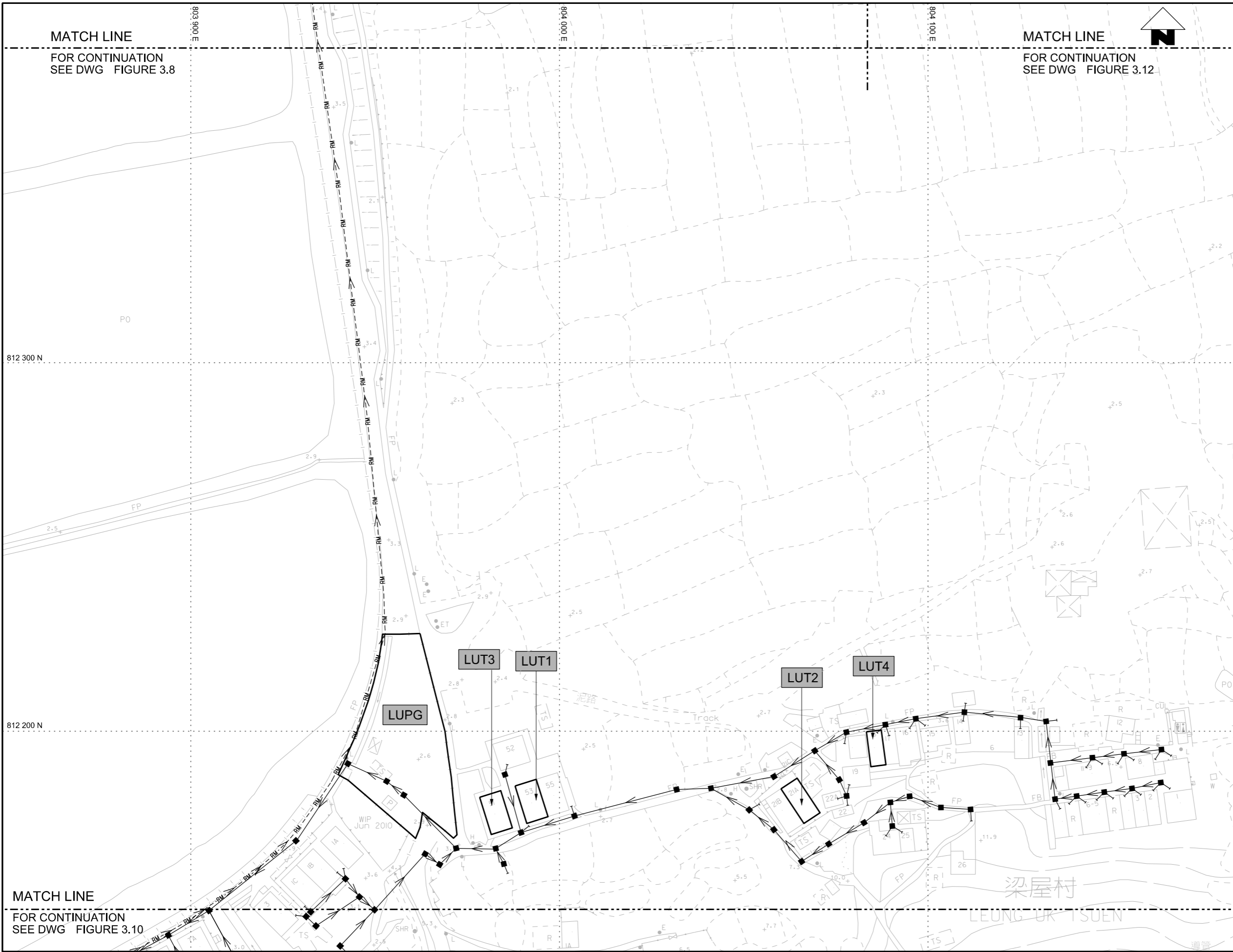
MATCH LINE  
FOR CONTINUATION  
SEE DWG FIGURE 3.8

MATCH LINE  
FOR CONTINUATION  
SEE DWG FIGURE 3.12



KEY PLAN SCALE : N.T.S.

- LEGEND AND ABBREVIATION:
- Proposed Sewer
  - Proposed Manhole
  - Proposed Rising Main
  - Proposed Tapping Pipe (subject to consultation with owners of houses with topographical problem)
  - Proposed Sewage Pumping Station
  - Label for Air Sensitive Receiver
  - 500m Radius Boundary of Tai O STW, Hang Mei SPS and Fan Kwai Tong SPS



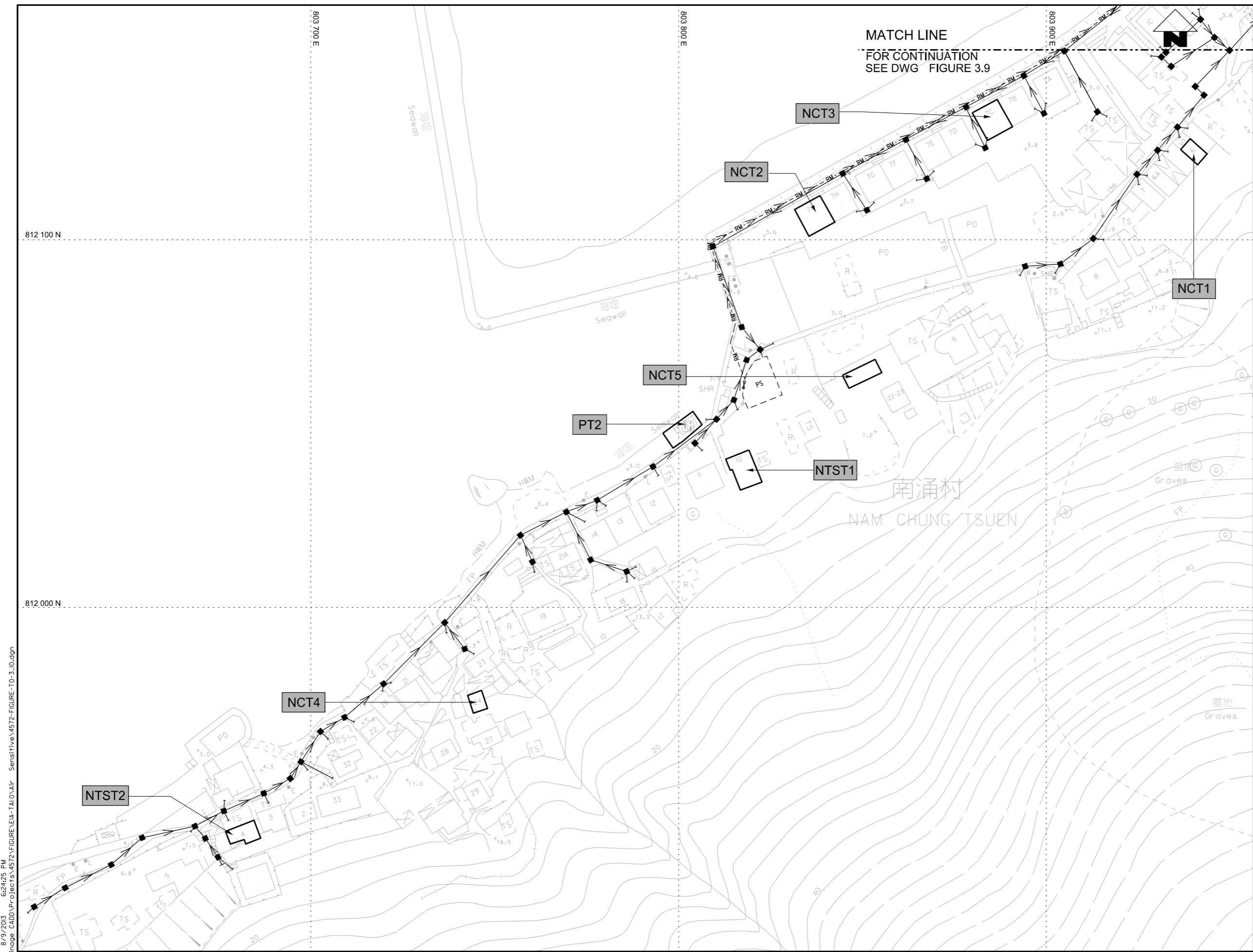
PRINTED BY: cheu8306 8/9/2013 6:24:24 PM  
 FILENAME: F:\CHINA\UP\orange\_CADD\Project\3.1572\FIGURE\EA-TAI O\AIR\_Sensitive\1572-FIGURE-TO-3.9.dgn

MATCH LINE  
FOR CONTINUATION  
SEE DWG FIGURE 3.10

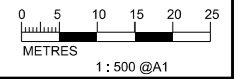


Agreement No. CE 15/2010 (DS)  
 Upgrading of Cheung Chau and Tai O Sewerage Collection, Treatment and Disposal Facilities - Design and Construction  
 Outlying Islands Sewerage Stage 2 -  
 Upgrading of Tai O Sewerage Collection, Treatment and Disposal Facilities

Title :	AIR SENSITIVE RECEIVERS (Sheet 9 of 14)		
Date :	MAY 2015	Figure :	3.9



- LEGEND AND ABBREVIATION:
- Proposed Sewer
  - Proposed Manhole
  - Proposed Rising Main
  - Proposed Tapping Pipe (subject to consultation with owners of houses with topographical problem)
  - Proposed Sewage Pumping Station
  - Label for Air Sensitive Receiver
  - 500m Radius Boundary of Tai O STW, Hang Mei SPS and Fan Kwai Tong SPS

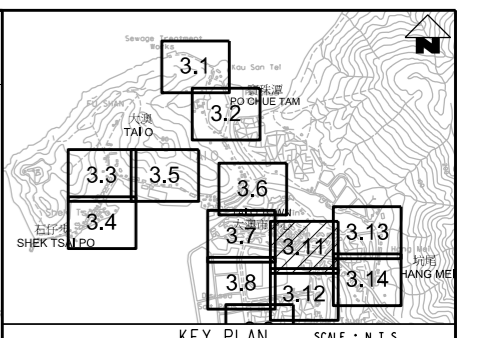
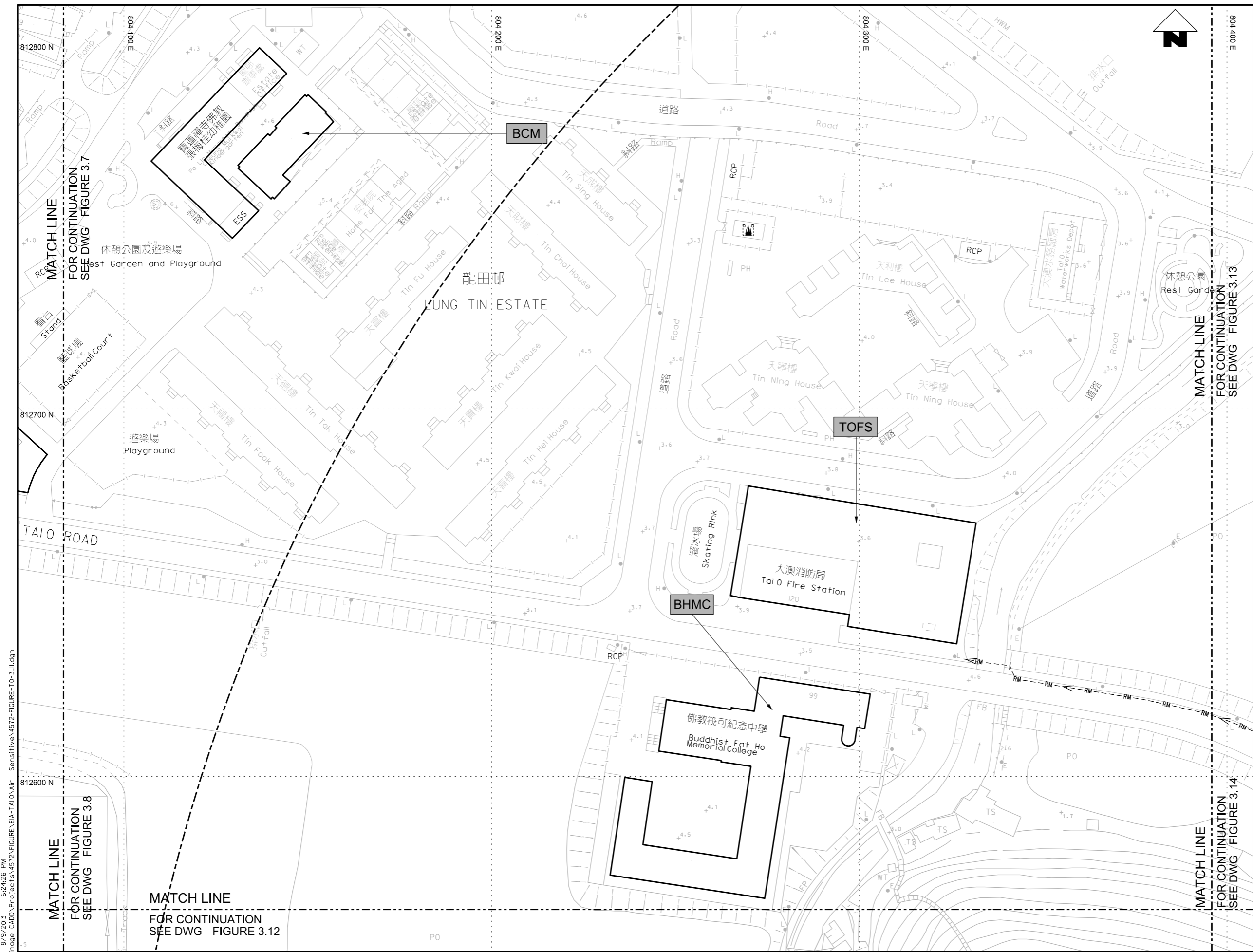


PRINTED BY: cheu8306 8/9/2013 6:24:25 PM  
 FILENAME: F:\CHINA\UP\orange\_CADD\Project\54572\FIGURE\EA-TAI O\AIR\_Sensitive\54572-FIGURE-TO-3.10.dgn

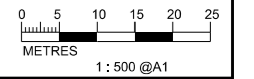


Agreement No. CE 15/2010 (DS)  
 Upgrading of Cheung Chau and Tai O Sewerage Collection, Treatment and Disposal Facilities - Design and Construction  
**Outlying Islands Sewerage Stage 2 -**  
 Upgrading of Tai O Sewerage Collection, Treatment and Disposal Facilities

Title :	<b>AIR SENSITIVE RECEIVERS</b> (Sheet 10 of 14)		
Date :	MAY 2015	Figure :	3.10



- LEGEND AND ABBREVIATION:**
- Proposed Sewer
  - Proposed Manhole
  - Proposed Rising Main
  - Proposed Tapping Pipe (subject to consultation with owners of houses with topographical problem)
  - Proposed Sewage Pumping Station
  - Label for Air Sensitive Receiver
  - 500m Radius Boundary of Tai O STW, Hang Mei SPS and Fan Kwai Tong SPS



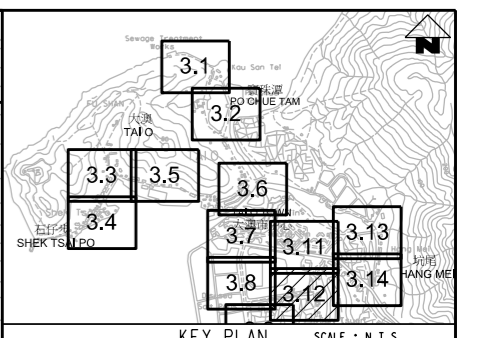
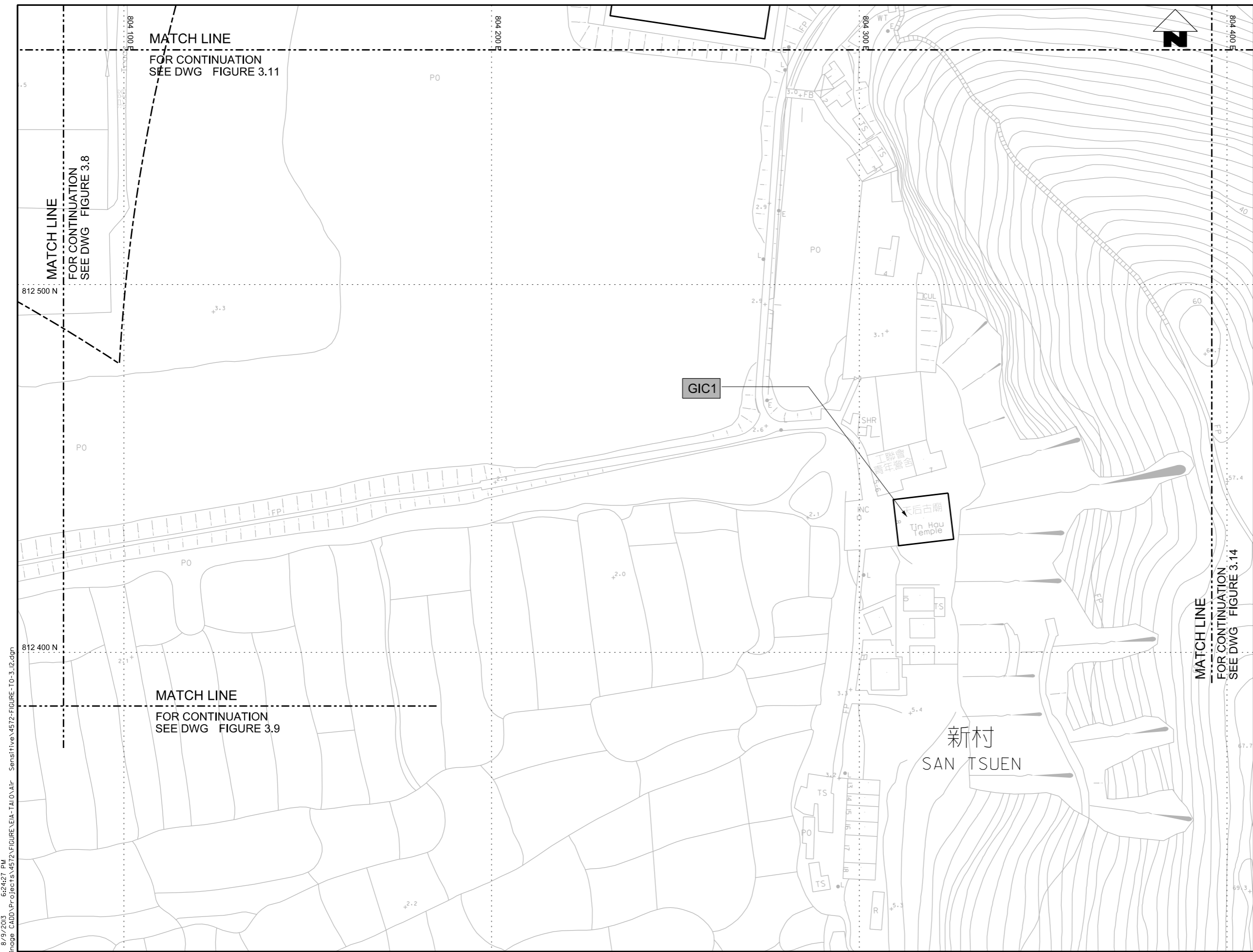
PRINTED BY: cheu8306 8/9/2013 6:24:26 PM  
 FILENAME: P:\CHINA\Up\orange\_CADD\Project\IS\4572\FIGURE\EA-TAI O\Air\_Sensitive\4572-FIGURE-TO-3\_11.dgn

渠務署  
DRAINAGE SERVICES DEPARTMENT

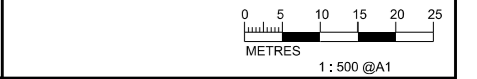
**ATKINS**

Agreement No. CE 15/2010 (DS)  
 Upgrading of Cheung Chau and Tai O Sewerage Collection, Treatment and Disposal Facilities - Design and Construction  
**Outlying Islands Sewerage Stage 2 -**  
 Upgrading of Tai O Sewerage Collection, Treatment and Disposal Facilities

Title :	AIR SENSITIVE RECEIVERS (Sheet 11 of 14)		
Date :	MAY 2015	Figure :	3.11



- LEGEND AND ABBREVIATION:
- Proposed Sewer
  - Proposed Manhole
  - Proposed Rising Main
  - Proposed Tapping Pipe (subject to consultation with owners of houses with topographical problem)
  - Proposed Sewage Pumping Station
  - Label for Air Sensitive Receiver
  - 500m Radius Boundary of Tai O STW, Hang Mei SPS and Fan Kwai Tong SPS

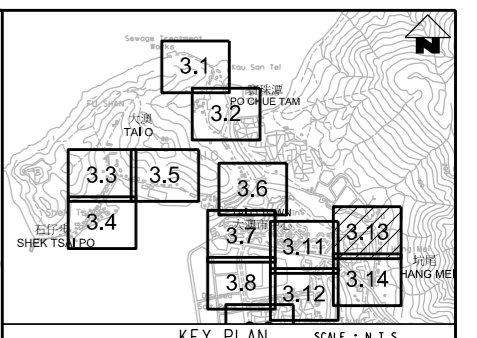


PRINTED BY: cheu8306 8/9/2013 6:24:27 PM  
 FILENAME: F:\CHINA\DR\image\_CADD\Project\IS\4572\FIGURE\EA-TAI O\Air\_Sensitive\4572-FIGURE-T0-3.12.dgn



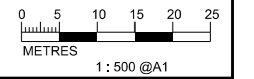
Agreement No. CE 15/2010 (DS)  
 Upgrading of Cheung Chau and Tai O Sewerage Collection, Treatment and Disposal Facilities - Design and Construction  
**Outlying Islands Sewerage Stage 2 -**  
 Upgrading of Tai O Sewerage Collection, Treatment and Disposal Facilities

Title :	<b>AIR SENSITIVE RECEIVERS</b> (Sheet 12 of 14)		
Date :	MAY 2015	Figure :	3.12



KEY PLAN SCALE : N.T.S.

- LEGEND AND ABBREVIATION:
- Proposed Sewer
  - Proposed Manhole
  - Proposed Rising Main
  - Proposed Tapping Pipe (subject to consultation with owners of houses with topographical problem)
  - Proposed Sewage Pumping Station
  - Label for Air Sensitive Receiver
  - 500m Radius Boundary of Tai O STW, Hang Mei SPS and Fan Kwai Tong SPS



PRINTED BY: cheu8306 8/12/2013 9:04:5 AM  
 FILENAME: F:\CHINA\Drainage\_CADD\Project\IS\4572\FIGURE\EA-TAI O\Air\_Sensitive\4572-FIGURE-T0-3.13.dgn

MATCH LINE  
 FOR CONTINUATION  
 SEE DWG FIGURE 3.11

MATCH LINE  
 FOR CONTINUATION  
 SEE DWG FIGURE 3.14



Agreement No. CE 15/2010 (DS)  
 Upgrading of Cheung Chau and Tai O Sewerage Collection, Treatment and Disposal Facilities - Design and Construction  
**Outlying Islands Sewerage Stage 2 -**  
 Upgrading of Tai O Sewerage Collection, Treatment and Disposal Facilities

Title :

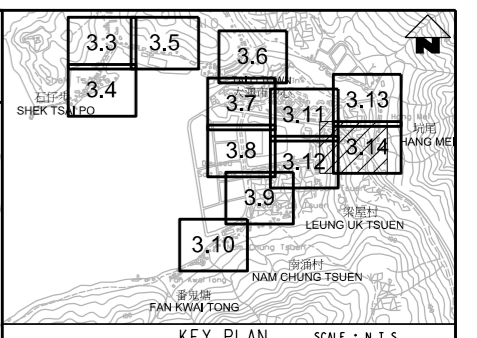
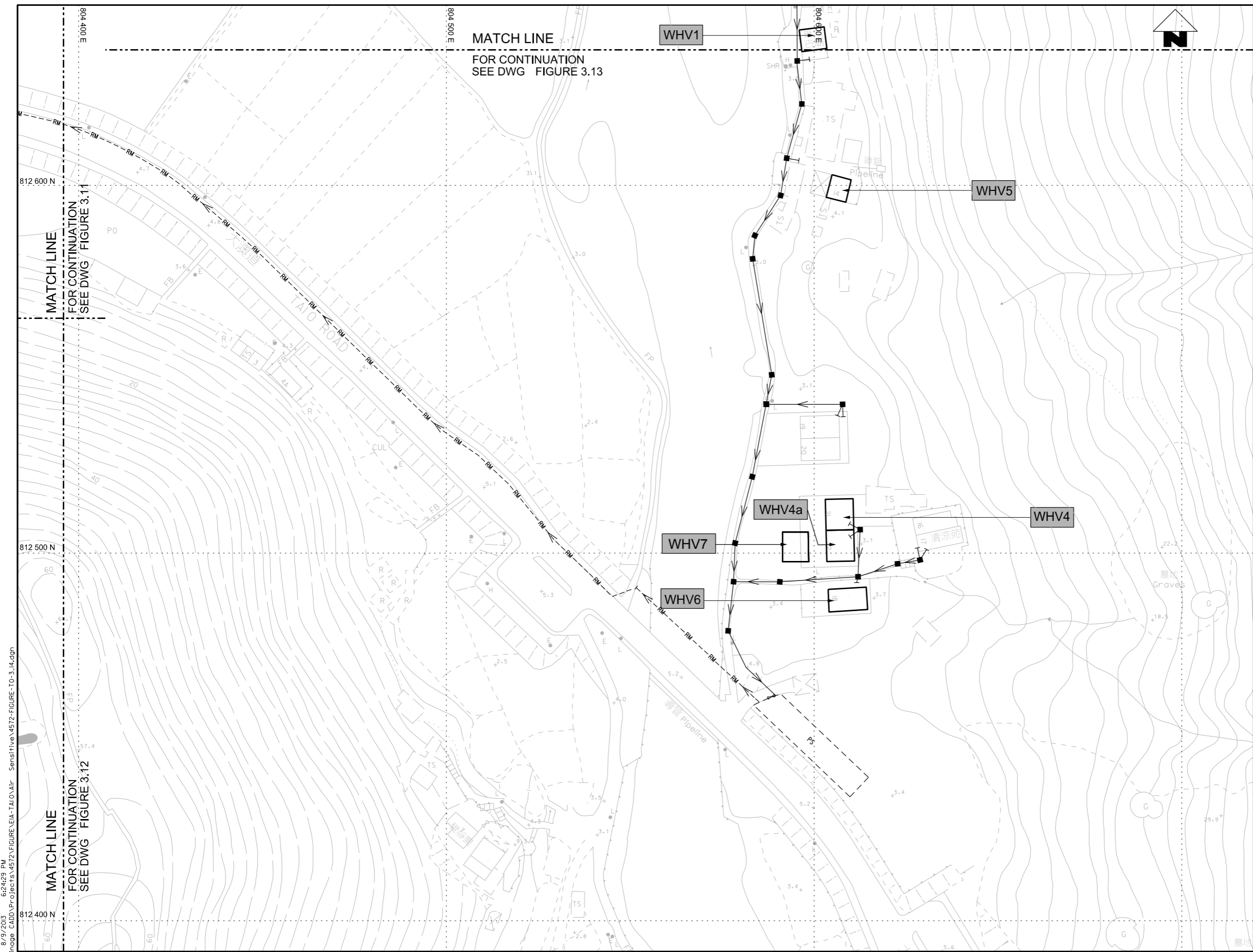
Date :

**AIR SENSITIVE RECEIVERS**  
(Sheet 13 of 14)

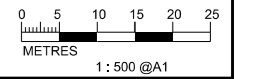
MAY 2015

Figure :

3.13



- LEGEND AND ABBREVIATION:
- Proposed Sewer
  - Proposed Manhole
  - Proposed Rising Main
  - Proposed Tapping Pipe (subject to consultation with owners of houses with topographical problem)
  - Proposed Sewage Pumping Station
  - Label for Air Sensitive Receiver
  - 500m Radius Boundary of Tai O STW, Hang Mei SPS and Fan Kwai Tong SPS



PRINTED BY: cheuk8306 8/9/2013 6:24:29 PM  
 FILENAME: F:\CHINA\UP\orange\_CADD\Project\54572\FIGURE\EA-TAI O\Air\_Sensitive\154572-FIGURE-T0-3.14.dgn

MATCH LINE FOR CONTINUATION SEE DWG FIGURE 3.11  
 MATCH LINE FOR CONTINUATION SEE DWG FIGURE 3.12

MATCH LINE  
 FOR CONTINUATION  
 SEE DWG FIGURE 3.13

812 400 N

812 500 N

804 400 E

804 500 E



Agreement No. CE 15/2010 (DS)  
 Upgrading of Cheung Chau and Tai O Sewerage Collection, Treatment and Disposal Facilities - Design and Construction  
 Outlying Islands Sewerage Stage 2 -  
 Upgrading of Tai O Sewerage Collection, Treatment and Disposal Facilities

Title :	AIR SENSITIVE RECEIVERS (Sheet 14 of 14)		
Date :	MAY 2015	Figure :	3.14