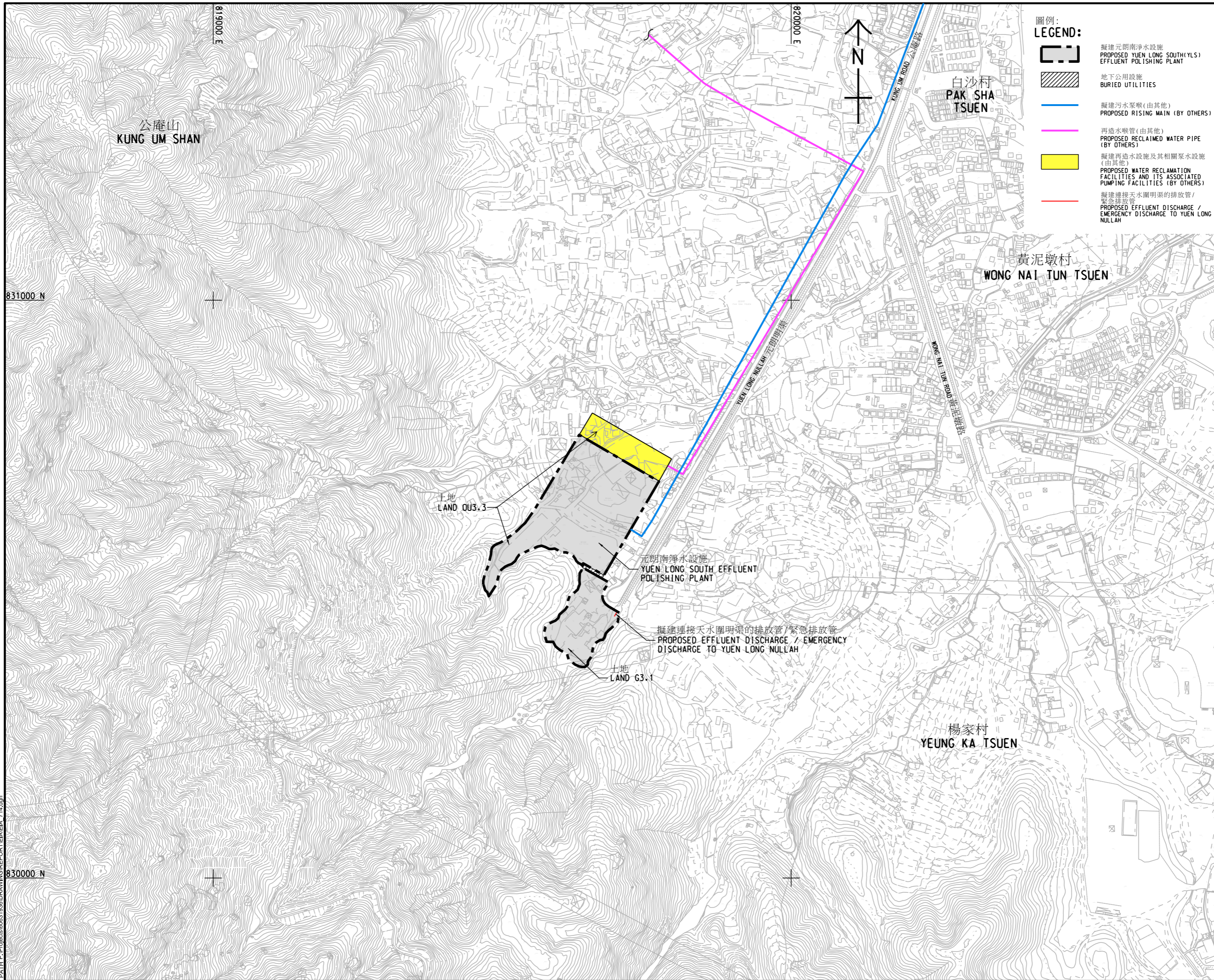


ISO A1 594mm x 841mm  
 Approved:  
 Checked:  
 Designer:  
 Project Management Initials:  
 7/3/2022  
 PATH P:\Projects\60631936\DRAWING\REPORT\EA\EA 7-14.dgn



**圖例: LEGEND:**

- 擬建元朗南淨水設施  
PROPOSED YUEN LONG SOUTH (YLS)  
EFFLUENT POLISHING PLANT
- 地下公用設施  
BURIED UTILITIES
- 擬建污水泵舉 (由其他)  
PROPOSED RISING MAIN (BY OTHERS)
- 再造水喉管 (由其他)  
PROPOSED RECLAIMED WATER PIPE  
(BY OTHERS)
- 擬建再造水設施及其相關泵水設施  
(由其他)  
PROPOSED WATER RECLAMATION  
FACILITIES AND ITS ASSOCIATED  
PUMPING FACILITIES (BY OTHERS)
- 擬建連接天水圍明渠的排放管/  
緊急排放管  
PROPOSED EFFLUENT DISCHARGE /  
EMERGENCY DISCHARGE TO YUEN LONG  
NULLAH

**AECOM**

**PROJECT**  
 洪水橋淨水設施及元朗南淨水設施 - 勘察  
 HUNG SHUI KIU EFFLUENT POLISHING PLANT AND YUEN LONG SOUTH EFFLUENT POLISHING PLANT - INVESTIGATION

**CLIENT**  
 渠務署  
 Drainage Services Department

**CONSULTANT**  
 AECOM Asla Company Ltd.  
 www.aecom.com

**SUB-CONSULTANTS**  
 分列工程師公司

**ISSUE/REVISION**

| NO. | DATE | DESCRIPTION | CHK. |
|-----|------|-------------|------|
|     |      |             |      |
|     |      |             |      |
|     |      |             |      |
|     |      |             |      |

**STATUS**

|  |
|--|
|  |
|--|

**SCALE**      **DIMENSION UNIT**

|             |        |
|-------------|--------|
| A1 1 : 3000 | METRES |
|-------------|--------|

**KEY PLAN**

|                                |                                       |
|--------------------------------|---------------------------------------|
| <b>PROJECT NO.</b><br>60631936 | <b>CONTRACT NO.</b><br>CE 6/2019 (DS) |
|--------------------------------|---------------------------------------|

**SHEET TITLE**  
 擬建之元朗南淨水設施位置圖  
 LOCATION OF PROPOSED  
 YUEN LONG SOUTH  
 EFFLUENT POLISHING PLANT

**SHEET NUMBER**  
 60631936/EIA/FIGURE 1.1

This drawing has been prepared for the use of AECOM's client. It may not be used, modified, reproduced or relied upon by third parties, except as agreed by AECOM or as required by law. AECOM accepts no responsibility, and denies any liability whatsoever, for any part that uses or relies on this drawing without AECOM's express written consent. Do not scale this document. All measurements must be obtained from the stated dimensions.