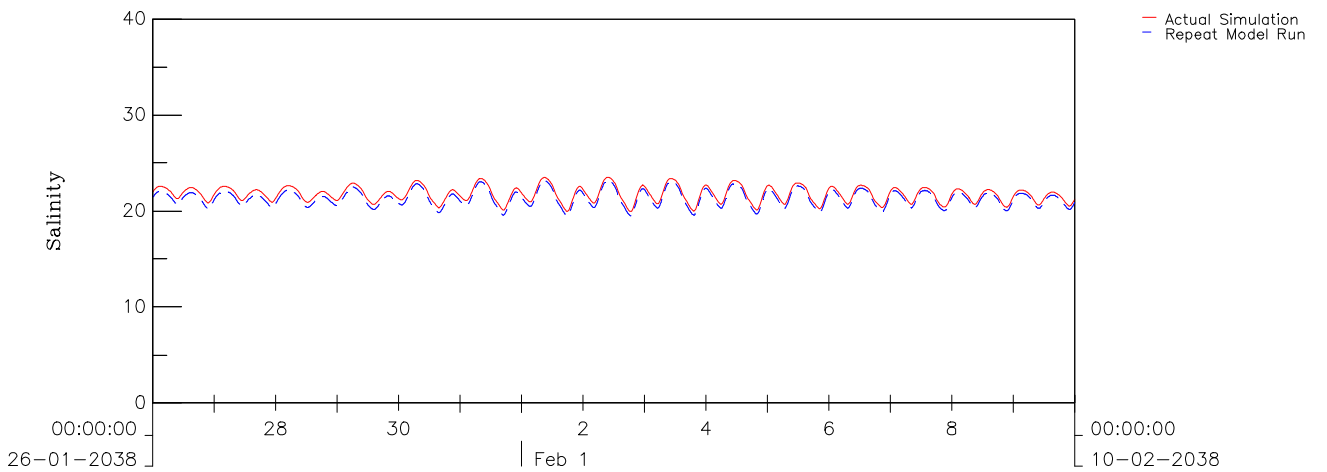
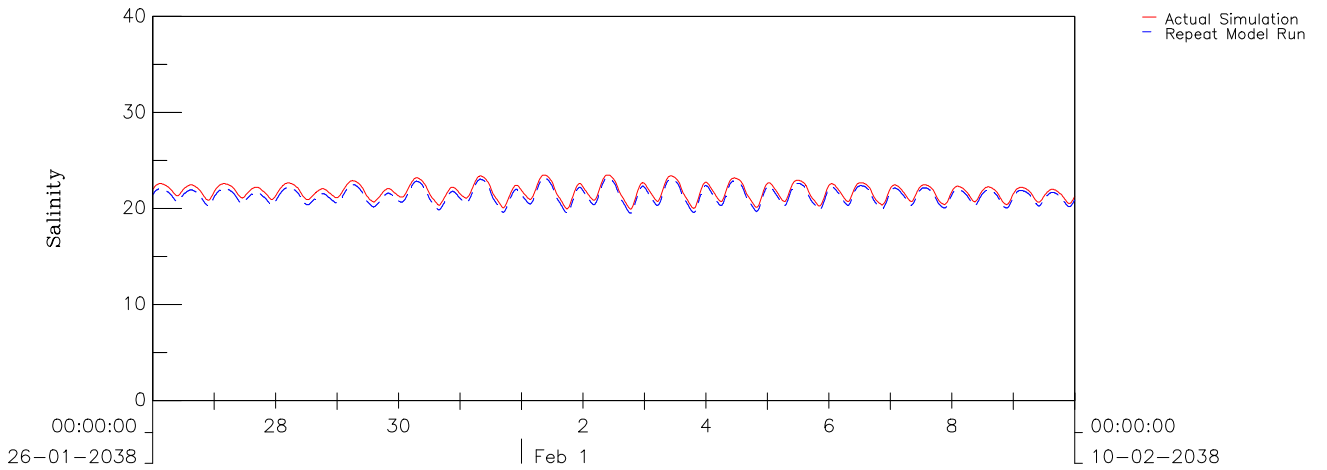
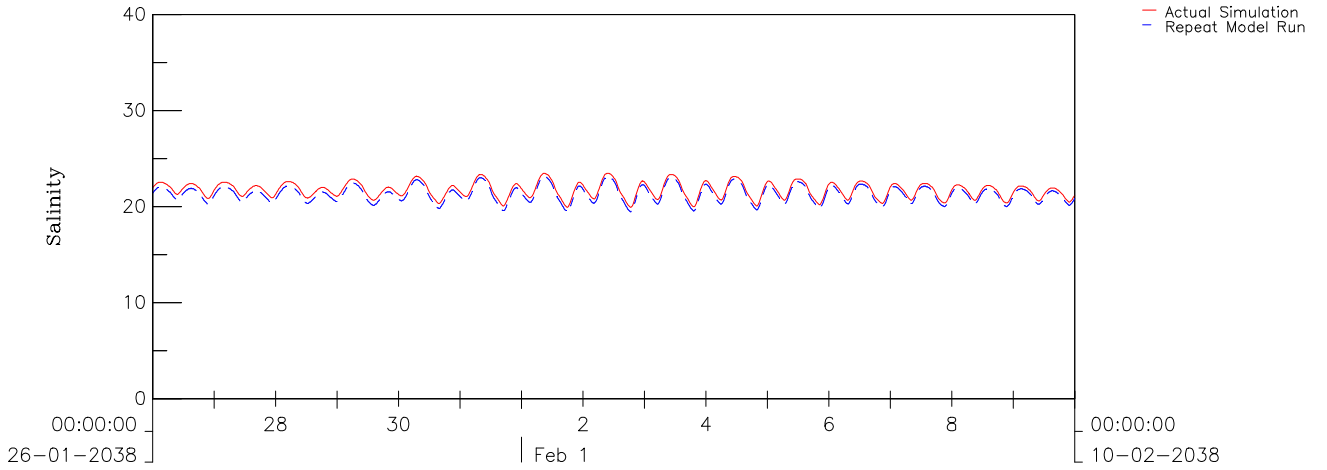
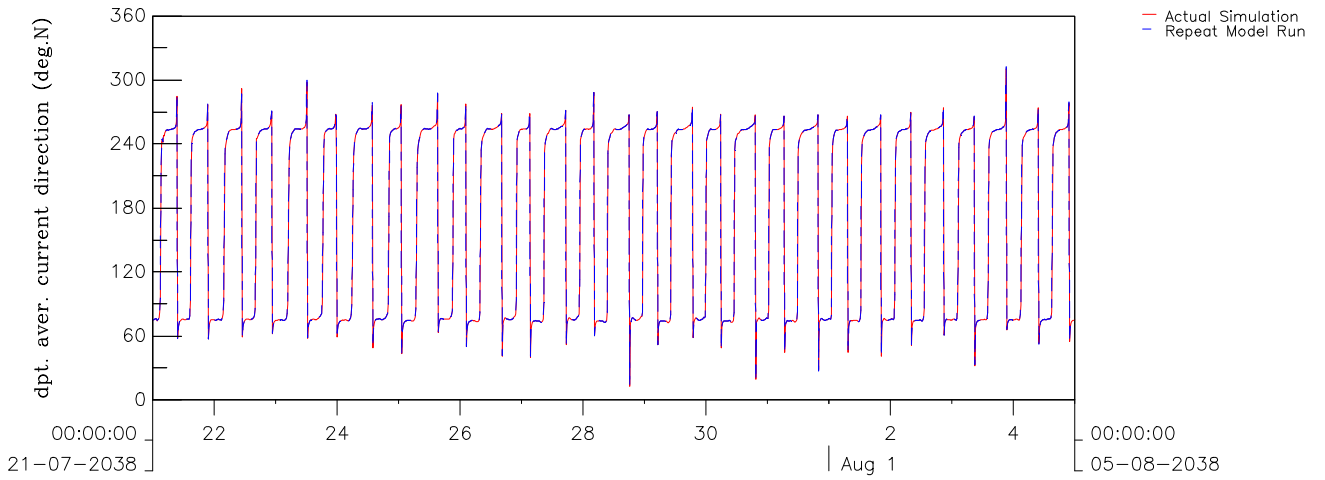
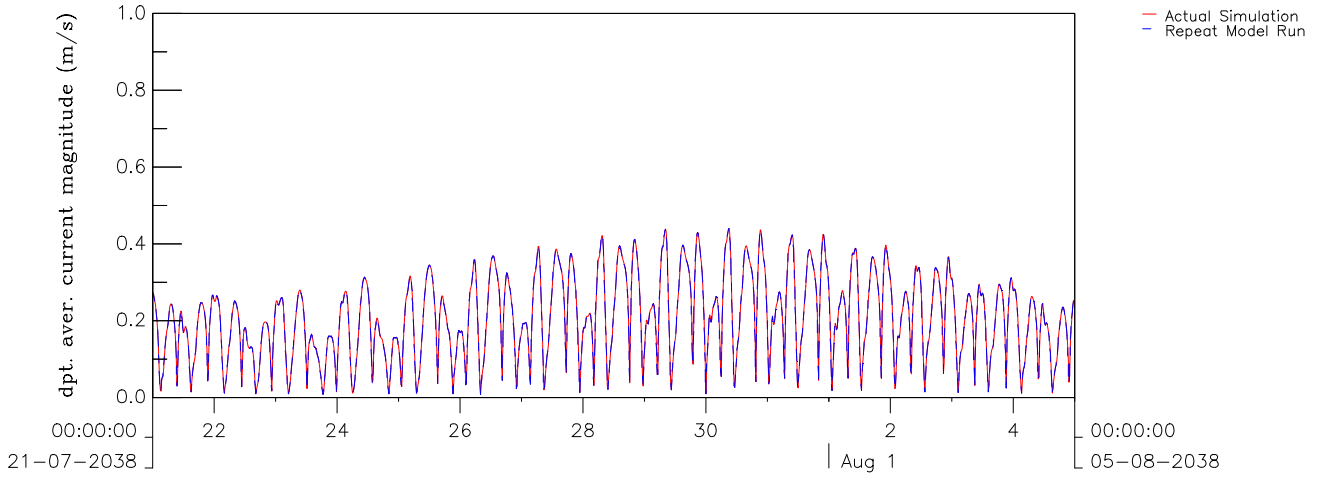
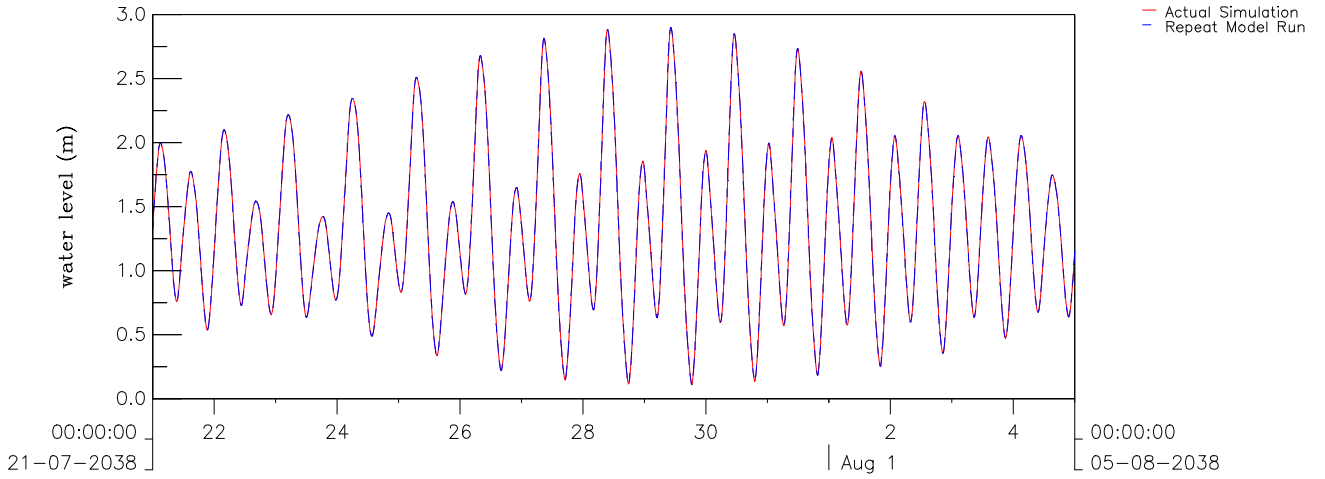


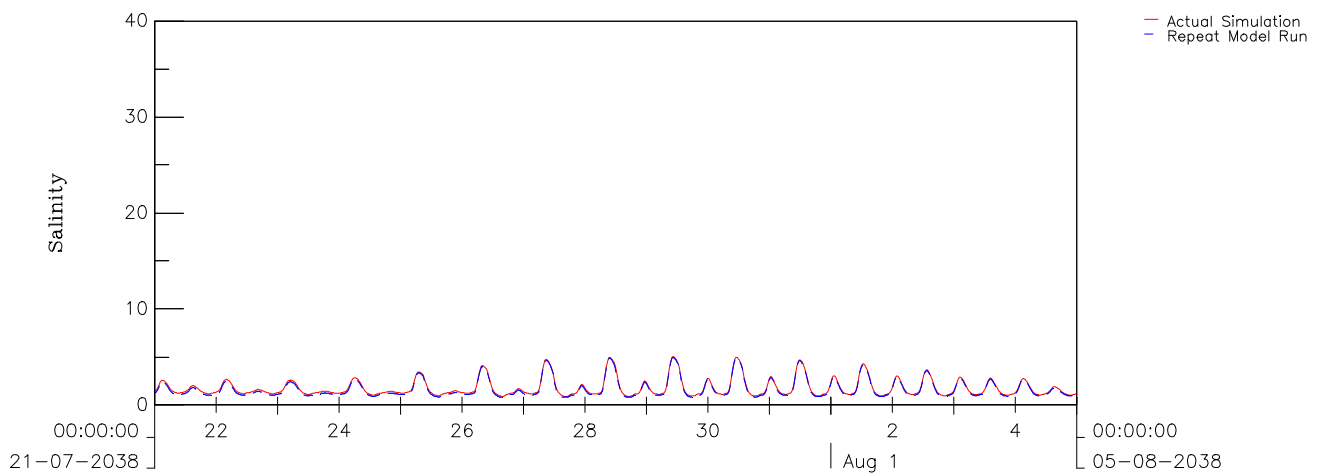
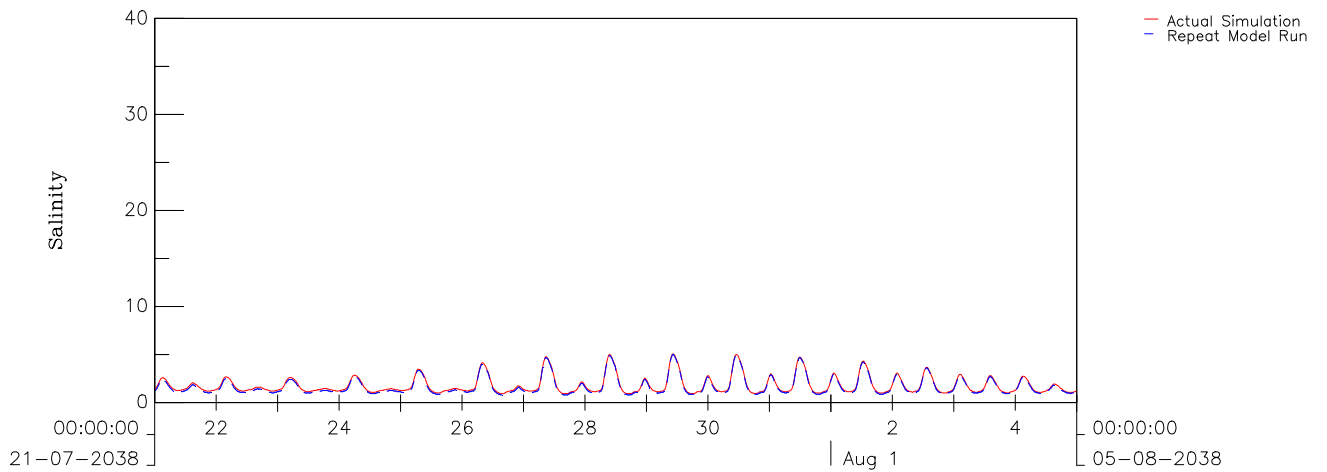
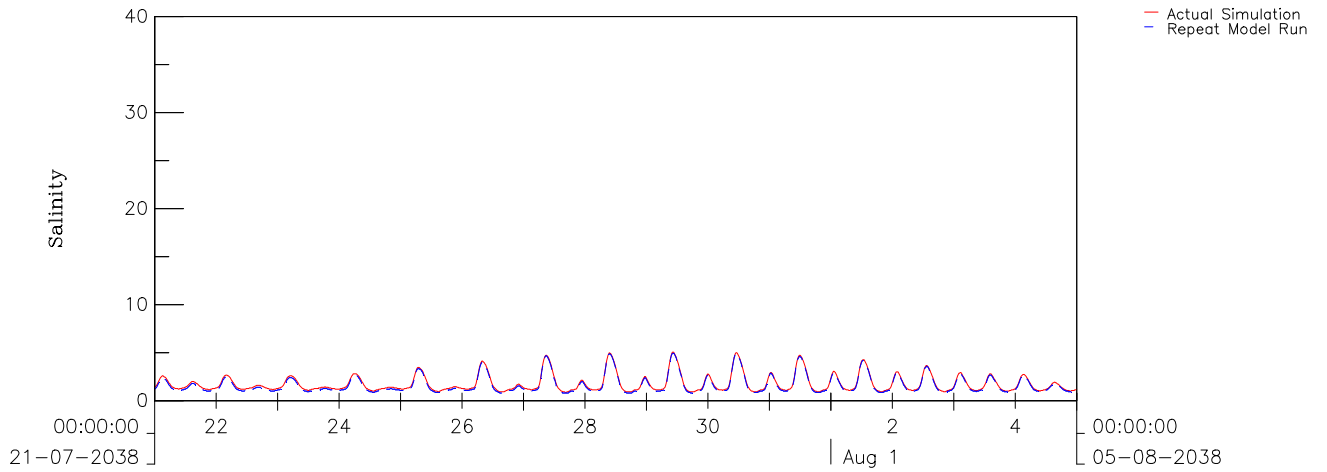
Agreement No. CE 6/2019 (DS) Hung Shui Kiu Effluent Polishing Plant and Yuen Long South Effluent Polishing Plant – Investigation Water Level, Depth Averaged Current Velocity and Direction at DM2 in Dry Season Model results – Red: Base Case; Dashed Blue: Repeat Model Run	Dry Season	Oct 2021
	Appendix 5.3 – 01	
AECOM	/GPP/	Spchk.ssn



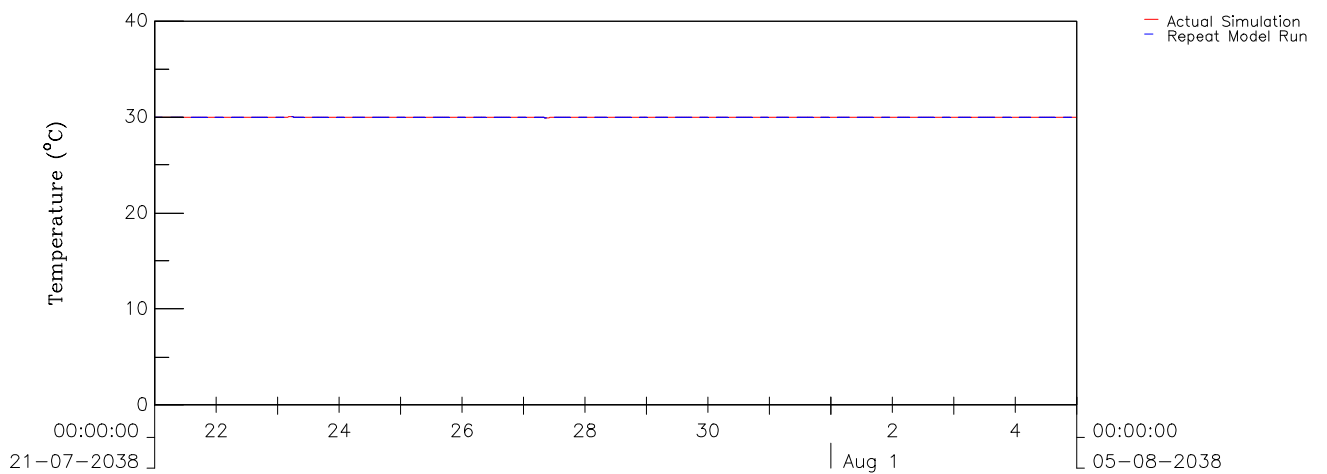
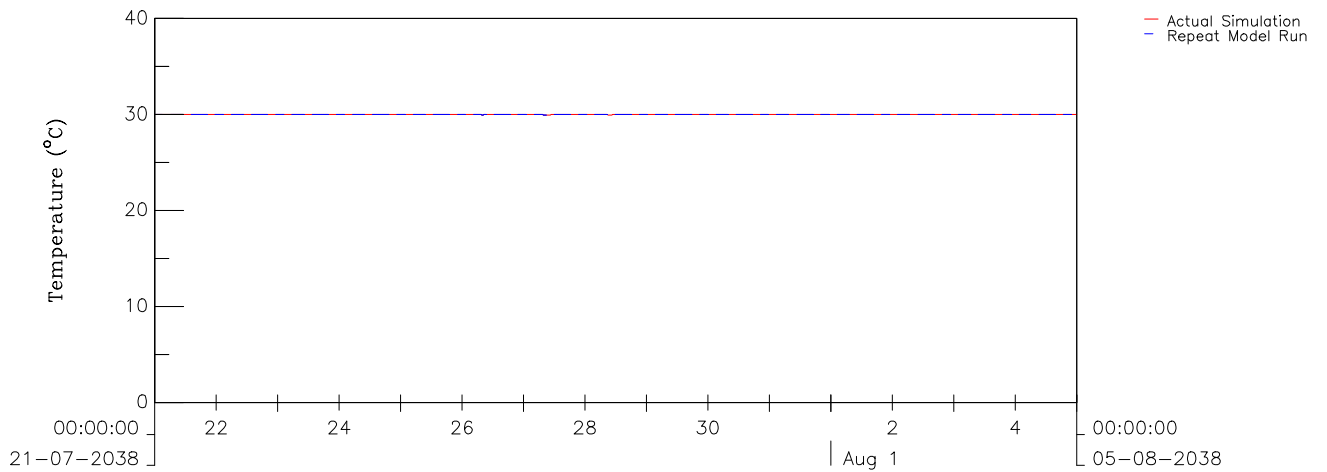
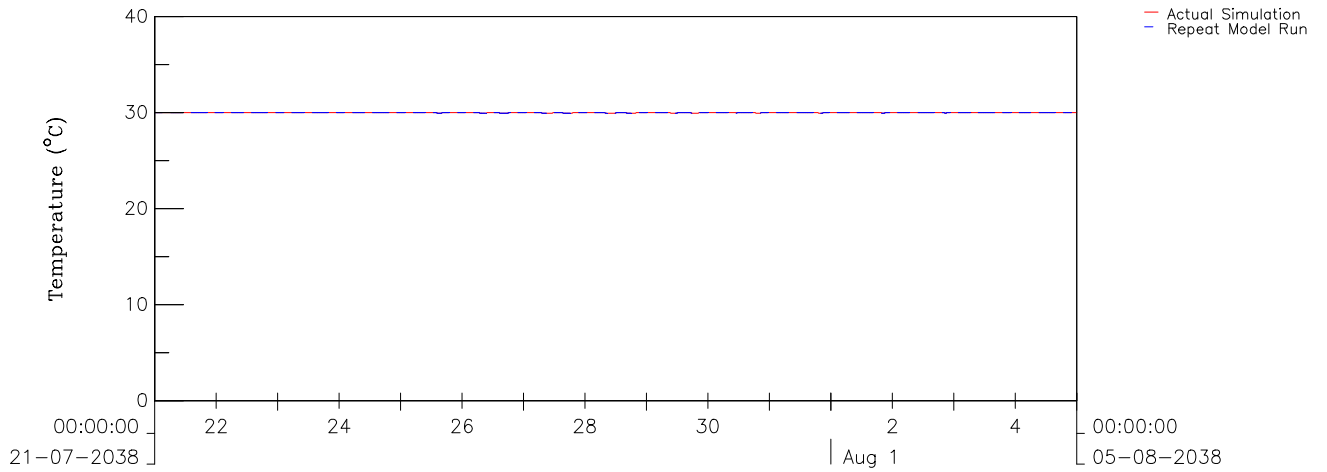
Agreement No. CE 6/2019 (DS) Hung Shui Kiu Effluent Polishing Plant and Yuen Long South Effluent Polishing Plant – Investigation Surface, Mid–Depth and Bottom Salinity at DM2 in Dry Season Model results – Red: Base Case; Dashed Blue: Repeat Model Run	Dry Season	Oct 2021
	Appendix 5.3 – 02	
AECOM	/GPP/	Spchk.ssn



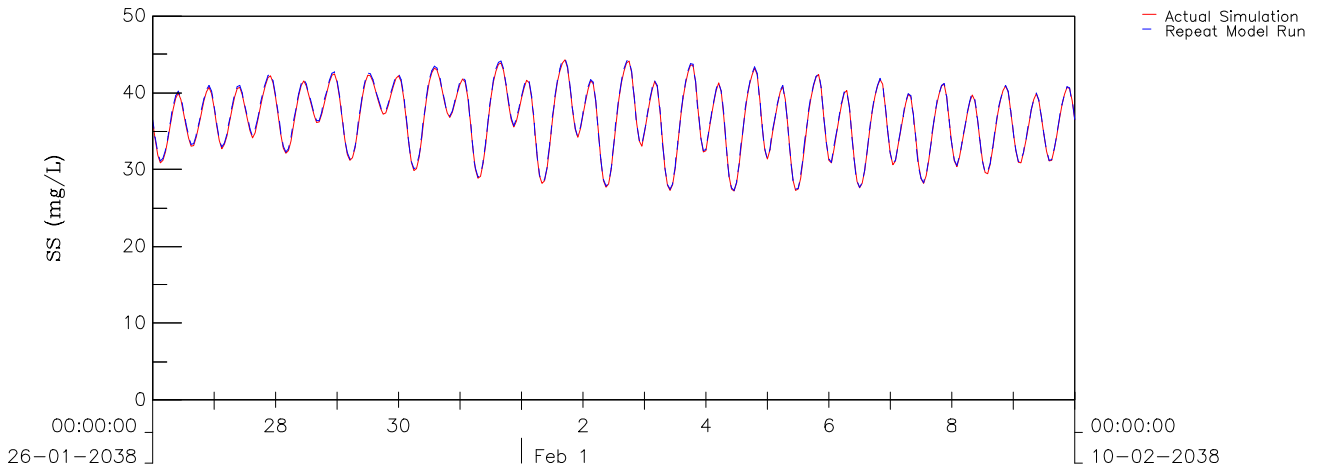
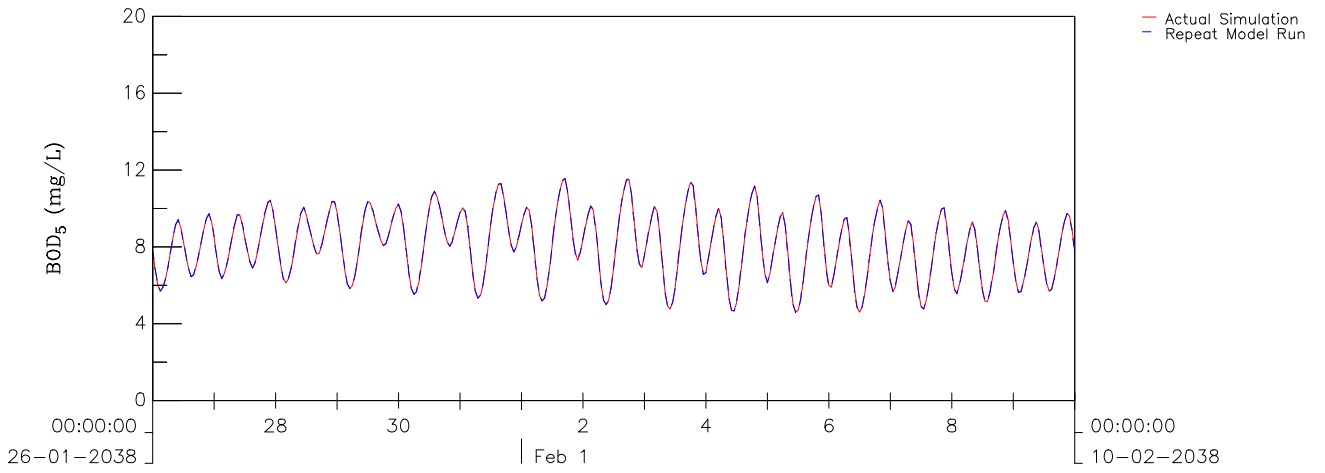
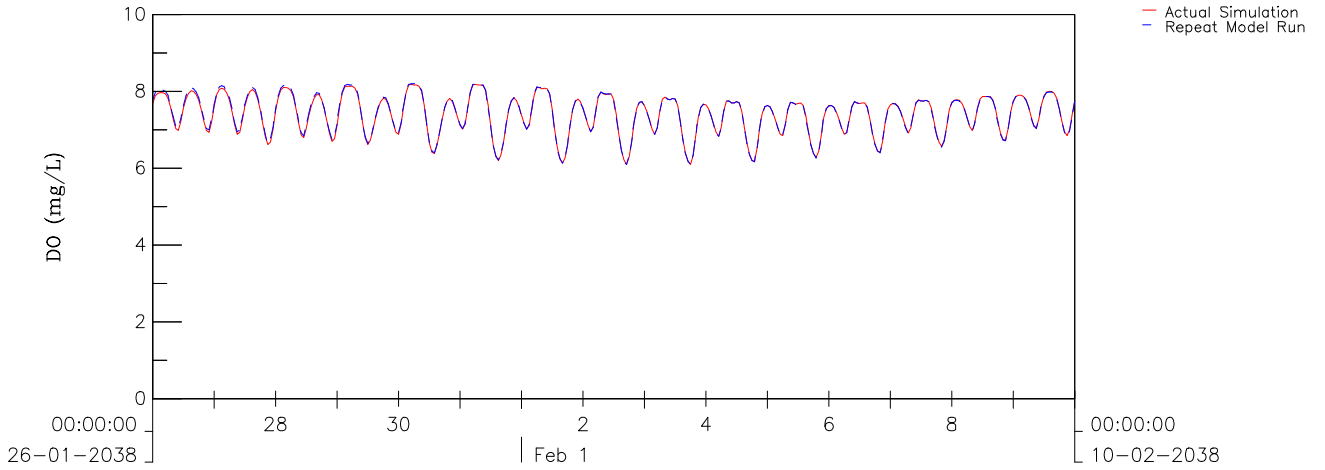
Agreement No. CE 6/2019 (DS) Hung Shui Kiu Effluent Polishing Plant and Yuen Long South Effluent Polishing Plant – Investigation Water Level, Depth Averaged Current Velocity and Direction at DM2 in Wet Season Model results – Red: Base Case; Dashed Blue: Repeat Model Run	Wet Season	Oct 2021
	Appendix 5.3 – 03	
AECOM	/GPP/	Spchk.ssn



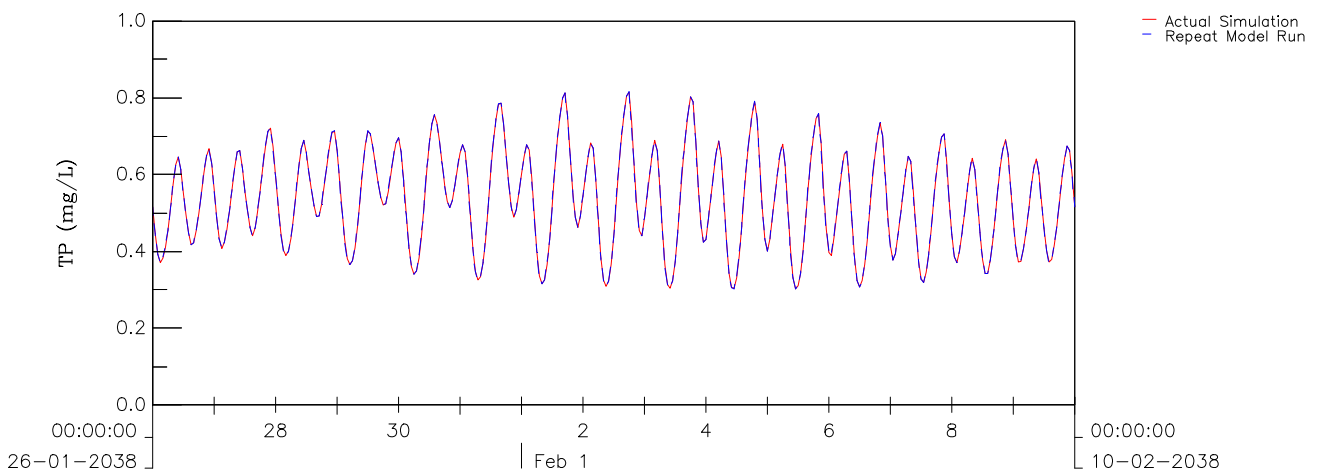
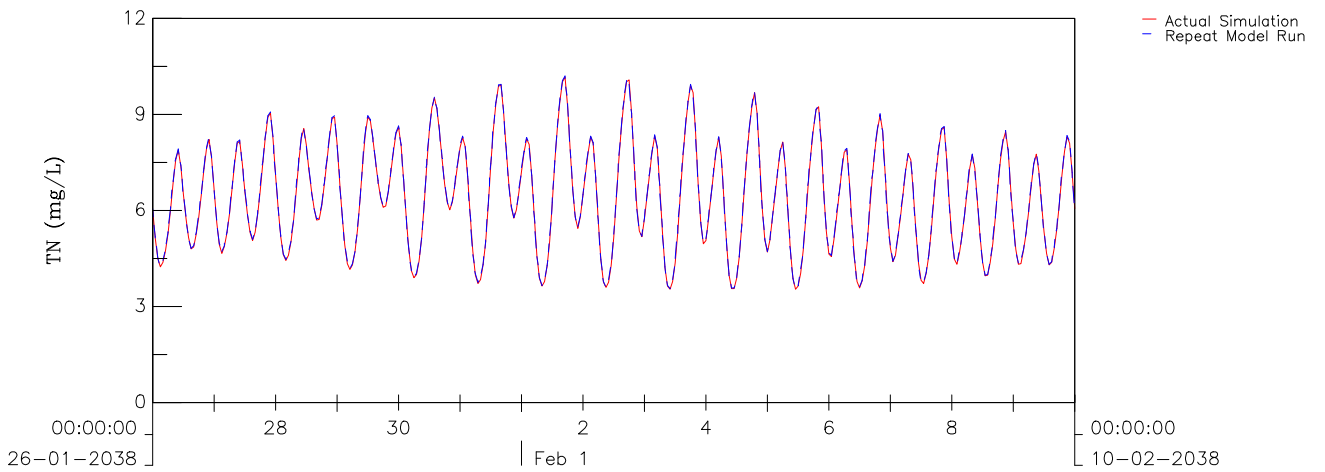
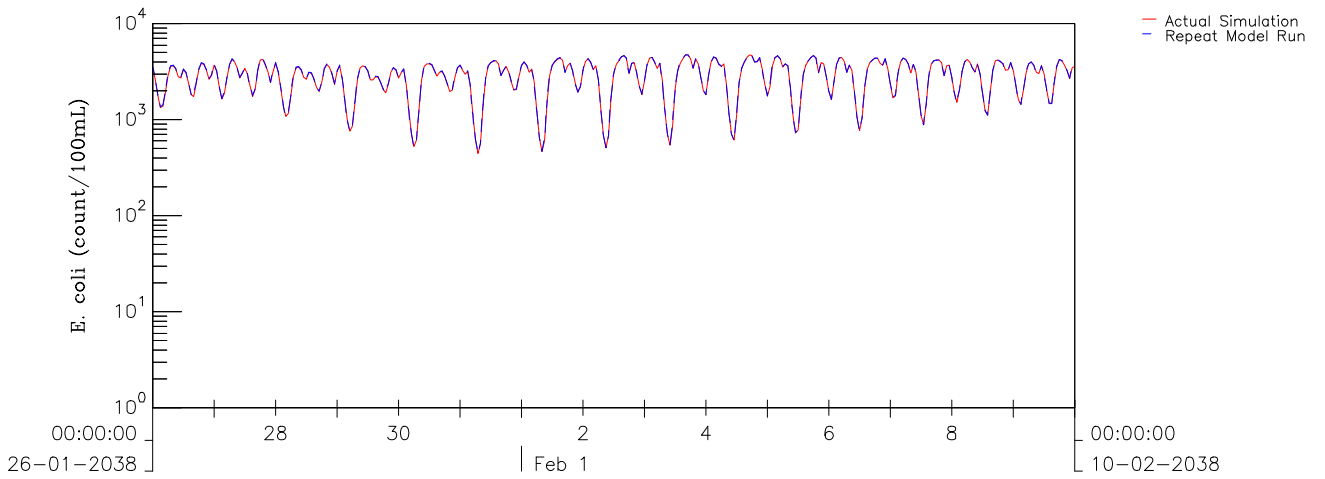
Agreement No. CE 6/2019 (DS) Hung Shui Kiu Effluent Polishing Plant and Yuen Long South Effluent Polishing Plant – Investigation Surface, Mid–Depth and Bottom Salinity at DM2 in Wet Season Model results – Red: Base Case; Dashed Blue: Repeat Model Run	Wet Season	Oct 2021
	Appendix 5.3 – 04	
AECOM	/GPP/	Spchk.ssn



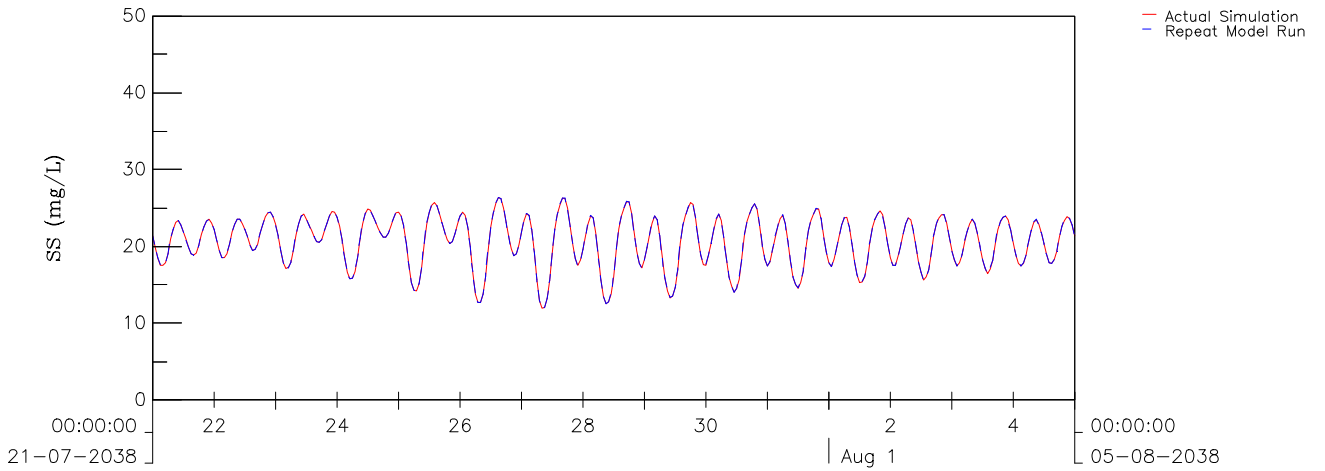
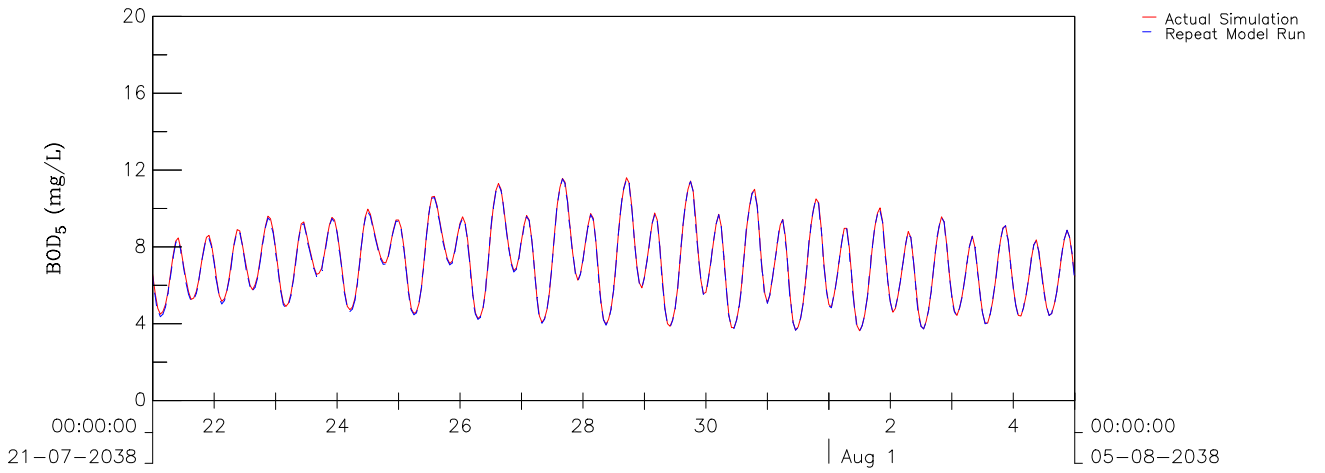
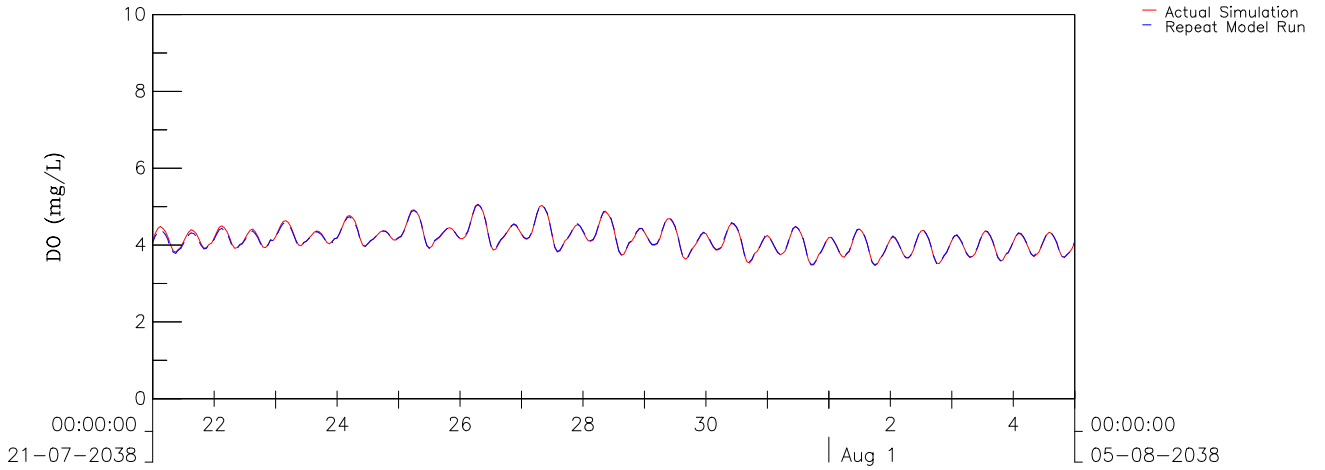
Agreement No. CE 6/2019 (DS) Hung Shui Kiu Effluent Polishing Plant and Yuen Long South Effluent Polishing Plant – Investigation Surface, Mid-Depth and Bottom Temperature at DM2 in Wet Season Model results – Red: Base Case; Dashed Blue: Repeat Model Run	Wet Season	Oct 2021
	Appendix 5.3 – 05	
AECOM	/GPP/	Spchk.ssn



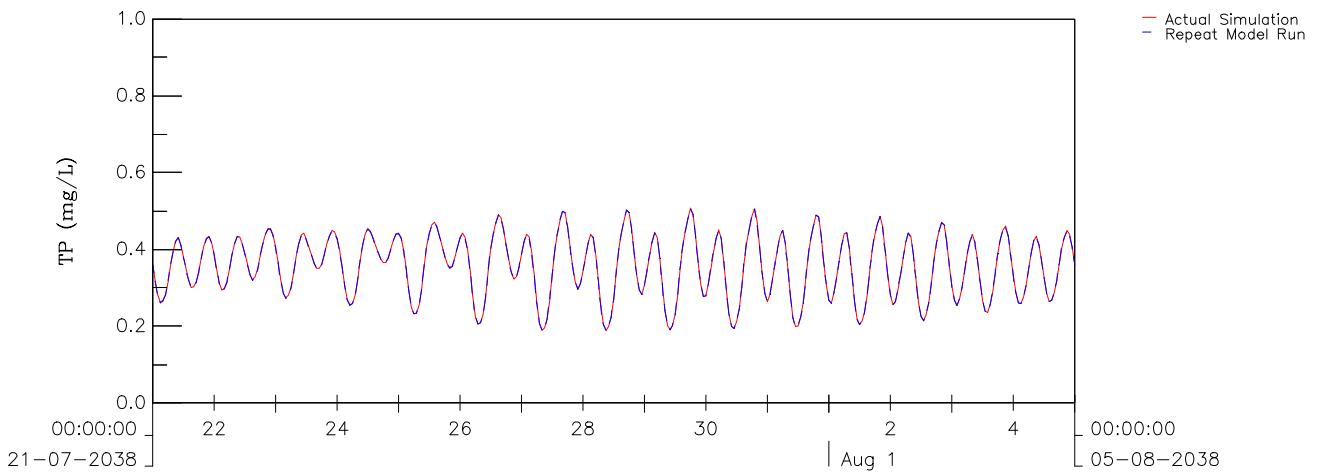
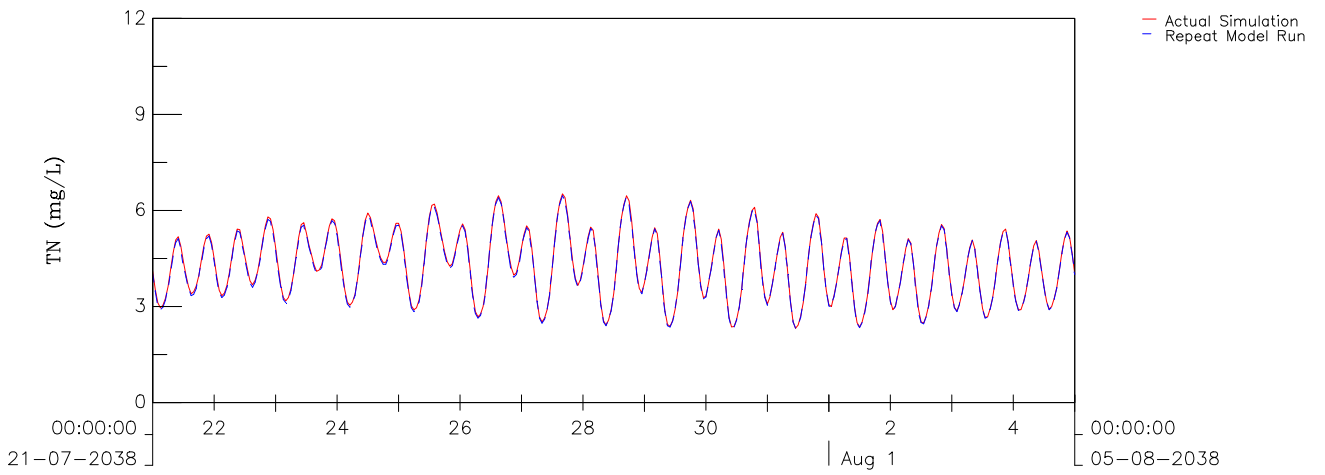
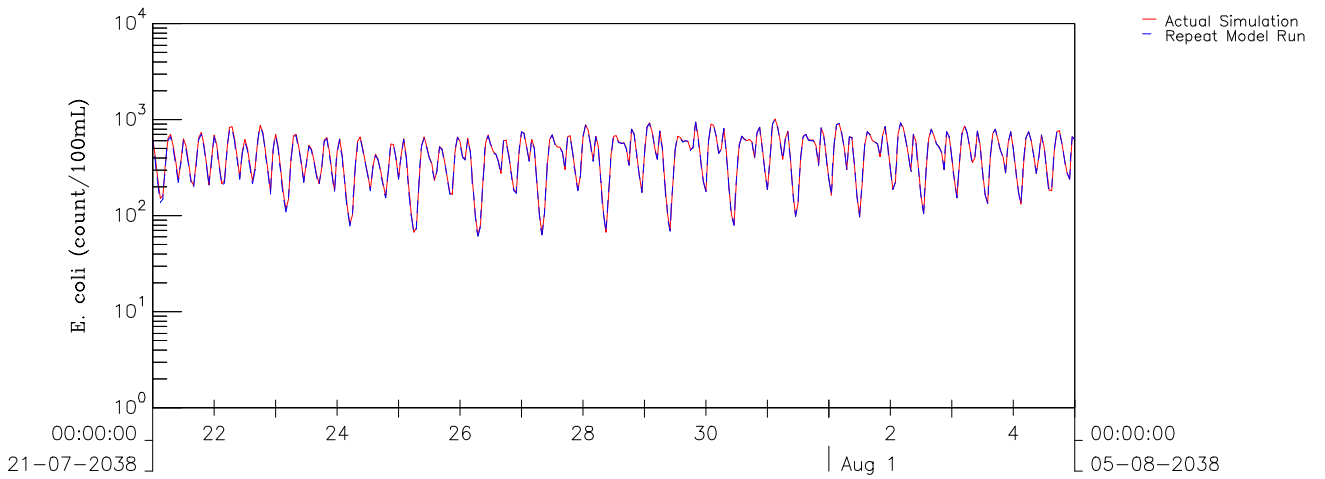
Agreement No. CE 6/2019 (DS) Hung Shui Kiu Effluent Polishing Plant and Yuen Long South Effluent Polishing Plant – Investigation Depth Averaged DO, BOD ₅ and SS at DM2 in Dry Season Model results – Red: Base Case; Dashed Blue: Repeat Model Run	Dry Season	Oct 2021
	Appendix 5.3 – 06	
AECOM	/GPP/	Spchk.ssn



Agreement No. CE 6/2019 (DS) Hung Shui Kiu Effluent Polishing Plant and Yuen Long South Effluent Polishing Plant – Investigation Depth Averaged E. coli, TN and TP at DM2 in Dry Season Model results – Red: Base Case; Dashed Blue: Repeat Model Run	Dry Season	Oct 2021
	Appendix 5.3 – 07	
AECOM	/GPP/	Spchk.ssn



Agreement No. CE 6/2019 (DS) Hung Shui Kiu Effluent Polishing Plant and Yuen Long South Effluent Polishing Plant – Investigation Depth Averaged DO, BOD ₅ and SS at DM2 in Wet Season Model results – Red: Base Case; Dashed Blue: Repeat Model Run	Wet Season	Oct 2021
	Appendix 5.3 – 08	
AECOM	/GPP/	Spchk.ssn



Agreement No. CE 6/2019 (DS) Hung Shui Kiu Effluent Polishing Plant and Yuen Long South Effluent Polishing Plant – Investigation Depth Averaged E. coli, TN and TP at DM2 in Wet Season Model results – Red: Base Case; Dashed Blue: Repeat Model Run	Wet Season	Oct 2021
	Appendix 5.3 – 09	
AECOM	/GPP/	Spchk.ssn