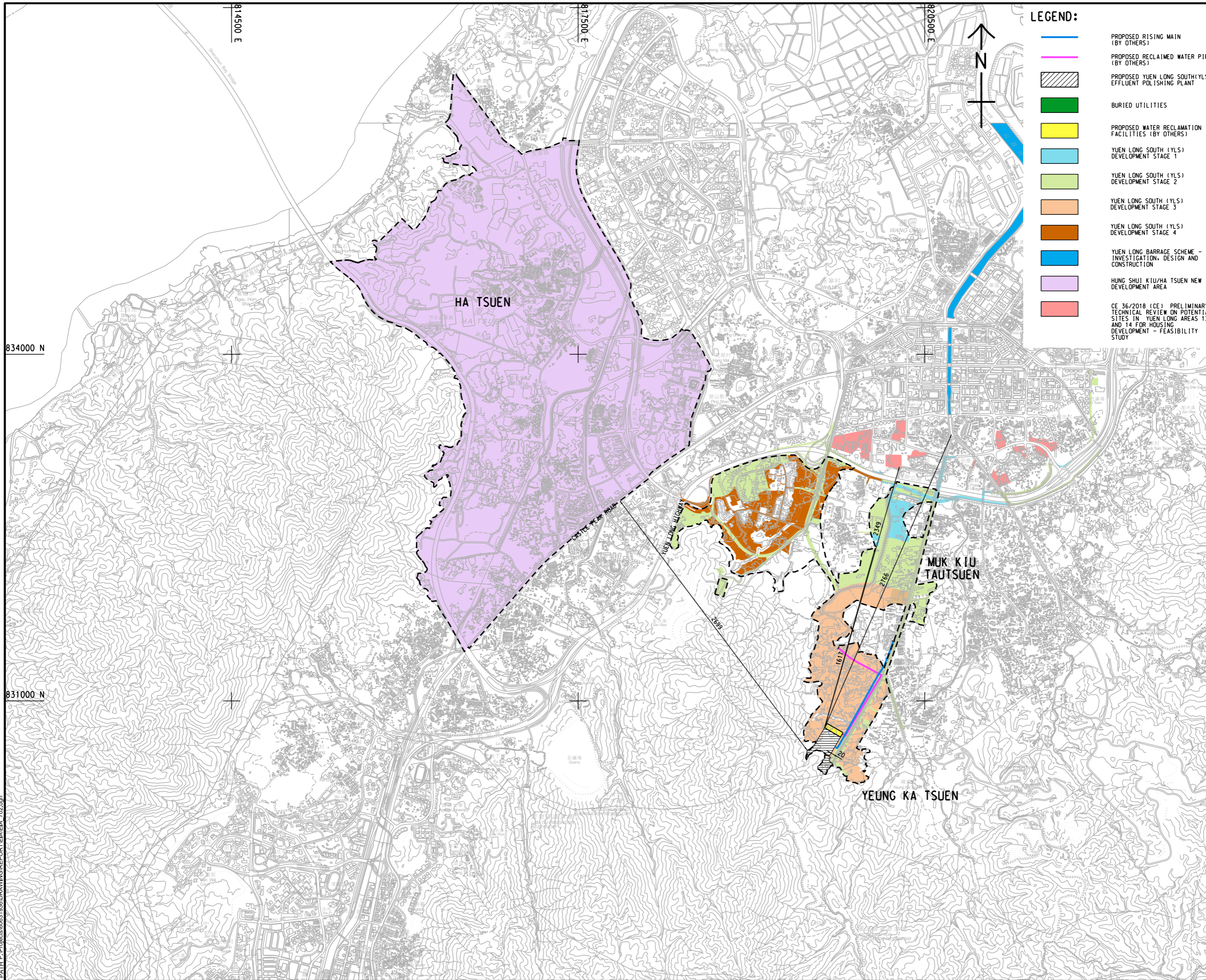


834000 N

831000 N



LEGEND:

- PROPOSED RISING MAIN (BY OTHERS)
- PROPOSED RECLAIMED WATER PIPE (BY OTHERS)
- PROPOSED YUEN LONG SOUTH (YLS) EFFLUENT POLISHING PLANT
- BURIED UTILITIES
- PROPOSED WATER RECLAMATION FACILITIES (BY OTHERS)
- YUEN LONG SOUTH (YLS) DEVELOPMENT STAGE 1
- YUEN LONG SOUTH (YLS) DEVELOPMENT STAGE 2
- YUEN LONG SOUTH (YLS) DEVELOPMENT STAGE 3
- YUEN LONG SOUTH (YLS) DEVELOPMENT STAGE 4
- YUEN LONG BARRAGE SCHEME - INVESTIGATION, DESIGN AND CONSTRUCTION
- HUNG SHUI KIU/HA TSUEN NEW DEVELOPMENT AREA
- CE 36/2018 (CE) PRELIMINARY TECHNICAL REVIEW ON POTENTIAL SITES IN YUEN LONG AREAS 13 AND 14 FOR HOUSING DEVELOPMENT - FEASIBILITY STUDY



**PROJECT**  
 HUNG SHUI KIU  
 EFFLUENT POLISHING  
 PLANT AND  
 YUEN LONG SOUTH  
 EFFLUENT POLISHING  
 PLANT - INVESTIGATION

**CLIENT**  
 渠務署  
 Drainage Services Department

**CONSULTANT**  
 AECOM Asla Company Ltd.  
 www.aecom.com

**SUB-CONSULTANTS**

**ISSUE/REVISION**

I/R	DATE	DESCRIPTION	CHK.

**STATUS**

**SCALE**                      **DIMENSION UNIT**  
 A1 1 : 15000                      METRES

**KEY PLAN**

**PROJECT NO.**                      **CONTRACT NO.**  
 60631936                              CE 6/2019 (DS)

**SHEET TITLE**  
 LOCATION OF OTHER POSSIBLE  
 CONCURRENT PROJECTS

**SHEET NUMBER**  
 60631936/EIA/FIGURE 2.4

This drawing has been prepared for the use of AECOM's client. It may not be used, modified, reproduced or relied upon by third parties, except as agreed by AECOM or as required by law. AECOM accepts no responsibility, and denies any liability whatsoever, for any party that uses or relies on this drawing without AECOM's express written consent. All measurements must be obtained from the stated dimensions.