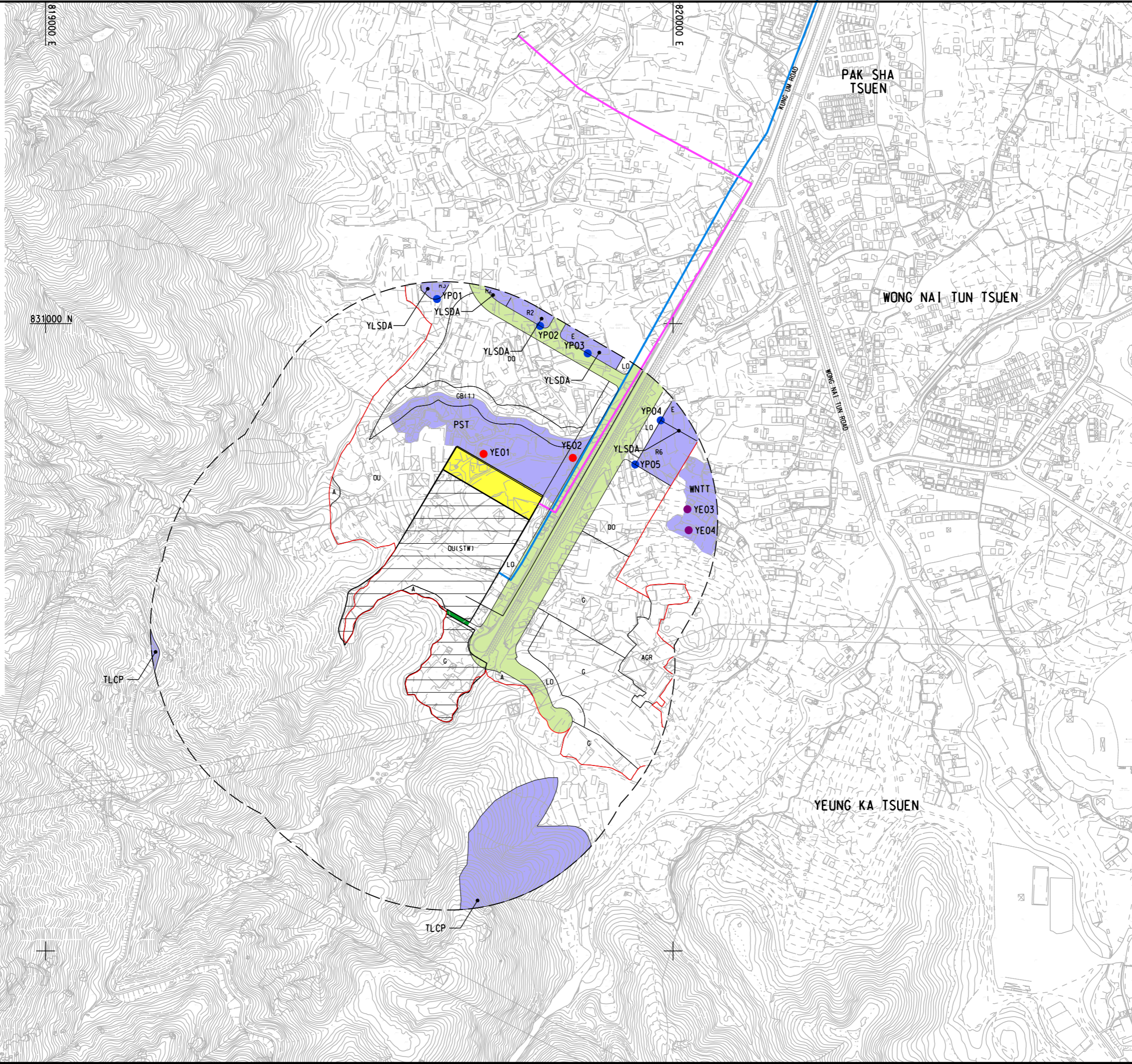


ISO A1 594mm x 841mm  
 Approved:  
 Checked:  
 Designer:  
 Project Management Initials:  
 Plot File by: yauky  
 PATH: P:\Projects\60631936\DRAWING\REPORT\EA\EA\_YLSEPP\_793.dgn  
 19/11/2022

**LEGEND:**

	YLS DEVELOPMENT AREA (DA) BOUNDARY
	PROPOSED YUEN LONG SOUTH (YLS) EFFLUENT POLISHING PLANT
	BURIED UTILITIES
	PROPOSED RISING MAIN (BY OTHERS)
	PROPOSED RECLAIMED WATER PIPE (BY OTHERS)
	PROPOSED WATER RECLAMATION FACILITIES (BY OTHERS)
	300m ASSESSMENT AREA
	YE01 CONSTRUCTION PHASE NOISE ASSESSMENT POINT
	YE03 CONSTRUCTION AND OPERATION PHASE NOISE ASSESSMENT POINT
	YPO1 OPERATION PHASE NOISE ASSESSMENT POINT
	NOISE SENSITIVE RECEIVER
	PROPOSED ROAD UNDER YLS DA
	RESIDENTIAL - ZONE 2 (R2)
	RESIDENTIAL - ZONE 3 (R3)
	RESIDENTIAL - ZONE 6 (R6)
	OTHER SPECIFIED USES (SEWAGE TREATMENT WORKS)
	OTHER SPECIFIED USES
	GOVERNMENT (G)
	EDUCATION (E)
	DISTRICT OPEN SPACE (DO)
	LOCAL OPEN SPACE (LO)
	AMENITY (A)
	AGRICULTURE (AGR)
	GREEN BELT (1) (GB(1))



**AECOM**

**PROJECT**  
 HUNG SHUI KIU EFFLUENT POLISHING PLANT AND YUEN LONG SOUTH EFFLUENT POLISHING PLANT - INVESTIGATION

**CLIENT**  
 渠務署  
 Drainage Services Department

**CONSULTANT**  
 AECOM Asla Company Ltd.  
 www.aecom.com

**SUB-CONSULTANTS**

**ISSUE/REVISION**

NO.	DATE	DESCRIPTION

**I/R**   **DATE**   **DESCRIPTION**   **CHK.**

**STATUS**

**SCALE**   **DIMENSION UNIT**

A1 1 : 3000   METRES

**KEY PLAN**

**PROJECT NO.**   **CONTRACT NO.**

60631936   CE 6/2019 (DS)

**SHEET TITLE**

LOCATIONS OF NOISE SENSITIVE RECEIVERS AND NOISE ASSESSMENT POINTS (YLSEPP)

**SHEET NUMBER**

60631936/WP\_NOISE\_YLSEPP /FIGURE 4.1

This drawing has been prepared for the use of AECOM's client. It may not be used, modified, reproduced or relied upon by third parties, except as agreed by AECOM or as required by law. AECOM accepts no responsibility, and denies any liability whatsoever, for any part that uses or relies on this drawing without AECOM's express written consent. All measurements must be obtained from the stated dimensions.