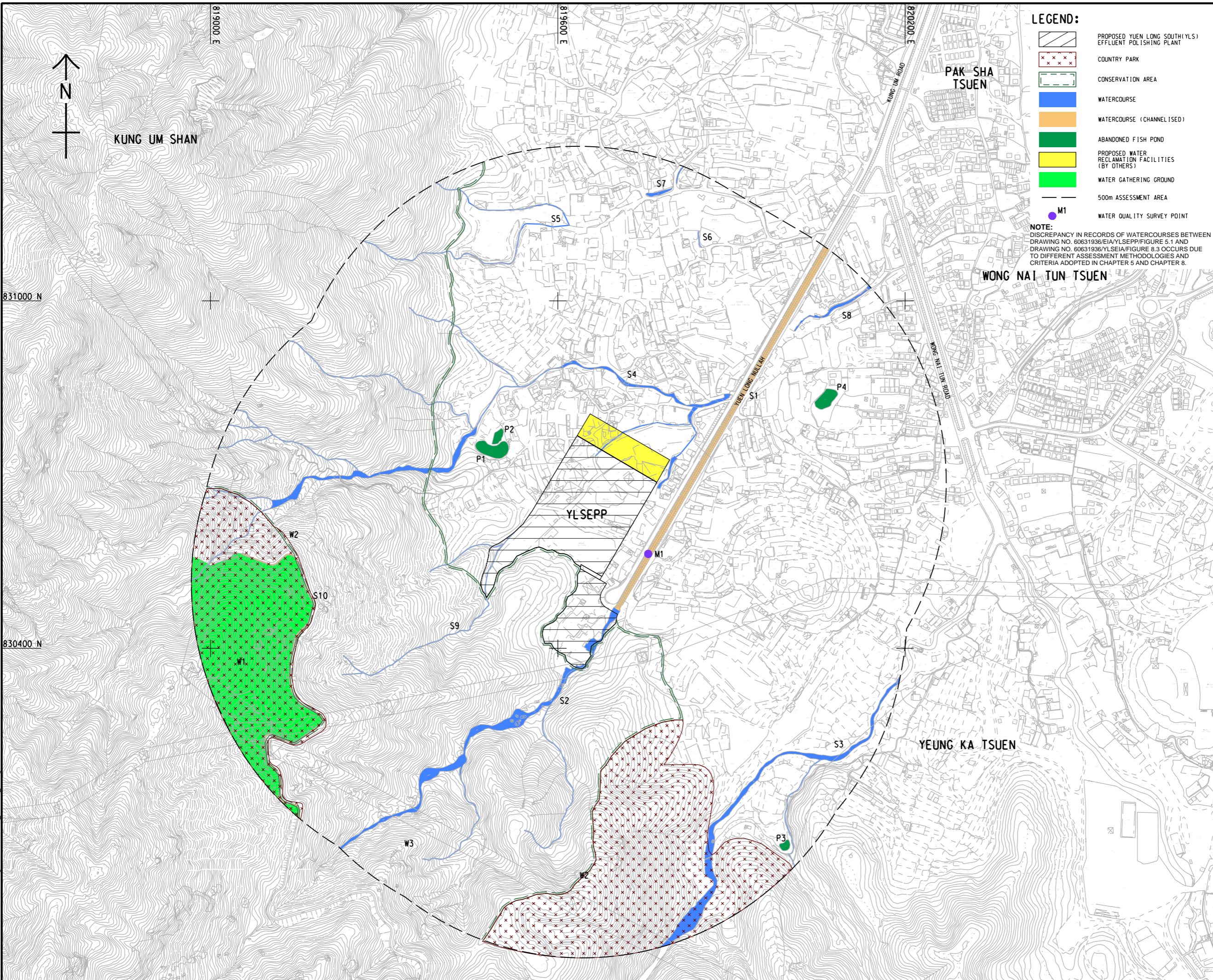


ISO A1 594mm x 841mm
 Approved:
 Checked:
 Designer:
 Project Management Initials:
 819000 E
 819600 E
 820200 E
 830400 N
 831000 N
 Plot File by: vicky.xia1
 PATH: P:\PROJECTS\60631936\Drawing\REPORT\EA\EA_YLSEPP_761.dgn
 5/3/2022



LEGEND:

- PROPOSED YUEN LONG SOUTH (YLS) EFFLUENT POLISHING PLANT
- COUNTRY PARK
- CONSERVATION AREA
- WATERCOURSE
- WATERCOURSE (CHANNELISED)
- ABANDONED FISH POND
- PROPOSED WATER RECLAMATION FACILITIES (BY OTHERS)
- WATER GATHERING GROUND
- 500m ASSESSMENT AREA
- M1 WATER QUALITY SURVEY POINT

NOTE:
 DISCREPANCY IN RECORDS OF WATERCOURSES BETWEEN DRAWING NO. 60631936/EIA/YLSEPP/FIGURE 5.1 AND DRAWING NO. 60631936/YLSEIA/FIGURE B.3 OCCURS DUE TO DIFFERENT ASSESSMENT METHODOLOGIES AND CRITERIA ADOPTED IN CHAPTER 5 AND CHAPTER 8.

AECOM

PROJECT
 HUNG SHUI KIU EFFLUENT POLISHING PLANT AND YUEN LONG SOUTH EFFLUENT POLISHING PLANT - INVESTIGATION

CLIENT
 渠務署
 Drainage Services Department

CONSULTANT
 AECOM Asia Company Ltd.
 www.aecom.com

SUB-CONSULTANTS
 分判工程師公司

ISSUE/REVISION

IR	DATE	DESCRIPTION	CHK.

STATUS
 01/21

SCALE **DIMENSION UNIT**
 A1 1 : 3000 METRES

KEY PLAN
 04/21/20

PROJECT NO. **CONTRACT NO.**
 60631936 CE 6/2019 (DS)

SHEET TITLE
 LOCATIONS OF WATER SENSITIVE RECEIVERS

SHEET NUMBER
 60631936/EIA/YLSEPP/FIGURE 5.1

This drawing has been prepared for the use of AECOM's client. It may not be used, modified, reproduced or relied upon by third parties, except as agreed by AECOM or as required by law. AECOM accepts no responsibility, and does not warrant, for any part, that uses or relies on this drawing without AECOM's express written consent. Do not scale this document. All measurements must be obtained from the stated dimensions.