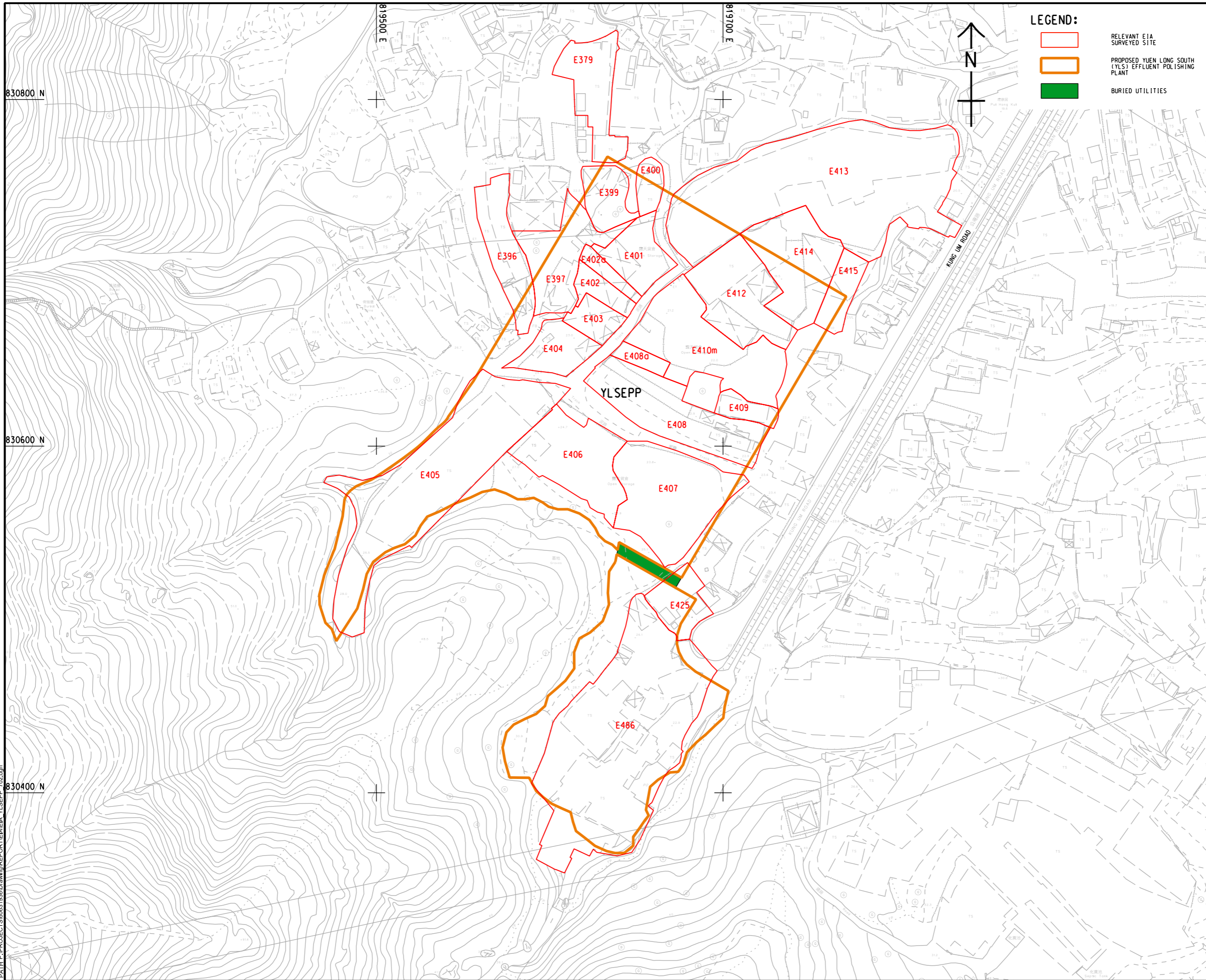


ISO A1 594mm x 841mm  
 Approved:  
 Checked:  
 Designer:  
 Project Management Initials:  
 Plot File by: Xin, Yang 09/2021  
 PATH P:\PROJECTS\60631936\Drawing\REPORT\EA\EA\_YLSEPP\_702.dgn



**LEGEND:**

- RELEVANT EIA SURVEYED SITE
- PROPOSED YUEN LONG SOUTH (YLS) EFFLUENT POLISHING PLANT
- BURIED UTILITIES

**AECOM**

**PROJECT**  
 HUNG SHUI KIU  
 EFFLUENT POLISHING  
 PLANT AND  
 YUEN LONG SOUTH  
 EFFLUENT POLISHING  
 PLANT - INVESTIGATION

**CLIENT**  
 渠務署  
 Drainage Services Department

**CONSULTANT**  
 AECOM Asia Company Ltd.  
 www.aecom.com

**SUB-CONSULTANTS**  
 分判工程師公司

**ISSUE/REVISION**

NO.	DATE	DESCRIPTION	CHK.

**STATUS**  
 00/00

**SCALE**                      **DIMENSION UNIT**  
 1:1000                      METRES

**KEY PLAN**

**PROJECT NO.**                      **CONTRACT NO.**  
 60631936                      CE 6/2019 (DS)

**SHEET TITLE**  
 LOCATION PLAN OF YLSEPP AND  
 RELEVANT EIA SURVEYED SITES

**SHEET NUMBER**  
 60631936/EIA/YLSEPP/FIGURE 7.1

This drawing has been prepared for the use of AECOM's client. It may not be used, modified, reproduced or relied upon by third parties, except as agreed by AECOM or as required by law. AECOM accepts no responsibility, and denies any liability whatsoever, for any part that less or relies on this drawing without AECOM's express, written consent. Do not scale this document. All measurements must be obtained from the stated dimensions.