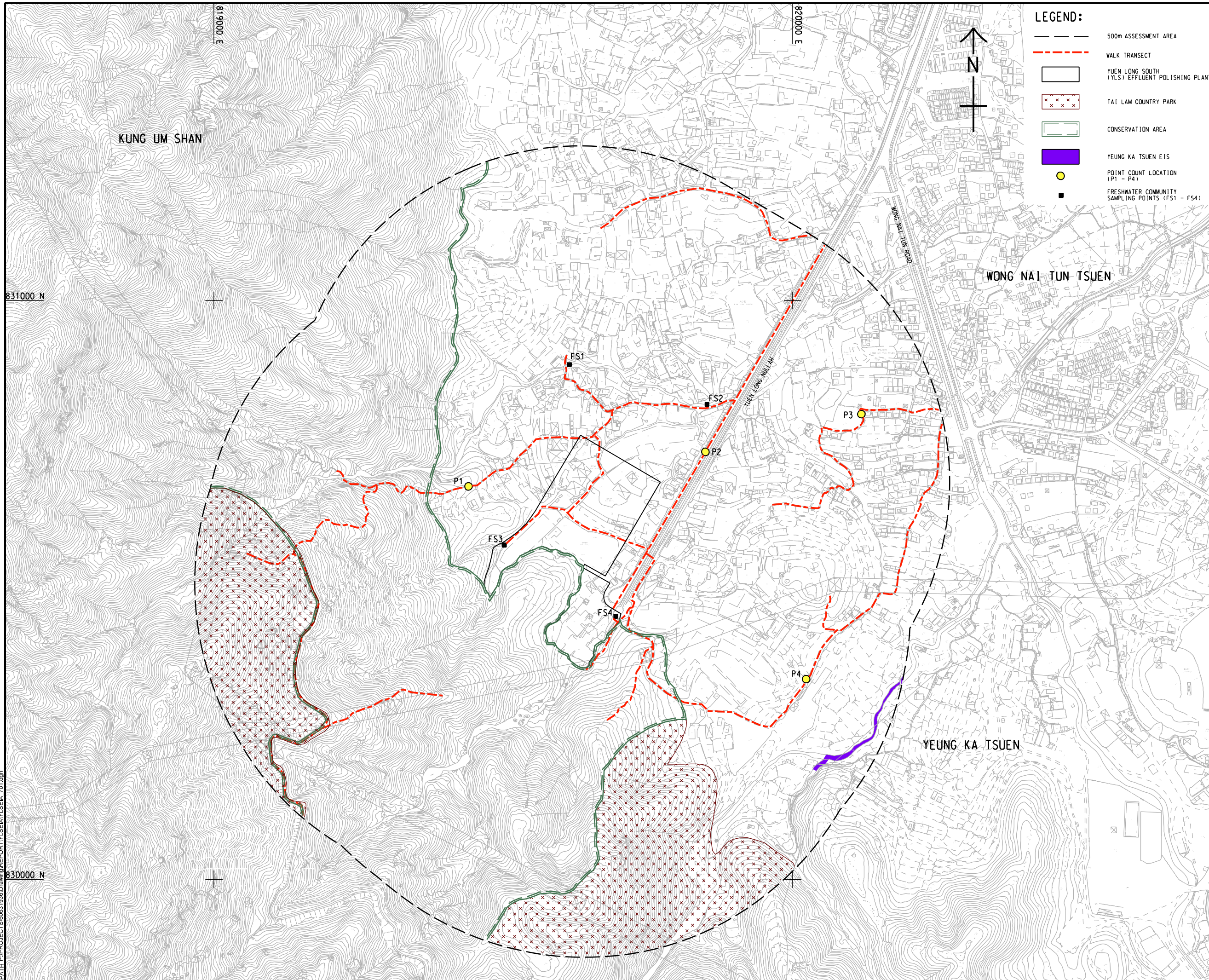


ISO A1 594mm x 841mm
 Approved:
 Checked:
 Designer:
 Project Management Initials:
 819000 E
 820000 E
 831000 N
 830000 N
 Plot File by: YouFB
 PATH: P:\PROJECTS\60631936\Drawings\REPORTING\SEA\YI_SEA_701.dgn
 6/9/2021



LEGEND:

- 500m ASSESSMENT AREA
- WALK TRANSECT
- YUEN LONG SOUTH (YLS) EFFLUENT POLISHING PLANT
- TAI LAM COUNTRY PARK
- CONSERVATION AREA
- YEUNG KA TSUEN EIS
- POINT COUNT LOCATION (P1 - P4)
- FRESHWATER COMMUNITY SAMPLING POINTS (FS1 - FS4)

AECOM

PROJECT
 HUNG SHUI KIU EFFLUENT POLISHING PLANT AND YUEN LONG SOUTH EFFLUENT POLISHING PLANT - INVESTIGATION

CLIENT
 渠務署
 Drainage Services Department

CONSULTANT
 AECOM Asia Company Ltd.
 www.aecom.com

SUB-CONSULTANTS

ISSUE/REVISION

No.	Description	Date	By	Check

STATUS

SCALE **DIMENSION UNIT**
 A1 1 : 3000 METRES

KEY PLAN

PROJECT NO. **CONTRACT NO.**
 60631936 CE 6/2019 (DS)

SHEET TITLE
 ECOLOGICAL ASSESSMENT AREA, WALK TRANSECT AND SAMPLING LOCATIONS FOR ECOLOGICAL SURVEYS (YUEN LONG SOUTH EFFLUENT POLISHING PLANT)

SHEET NUMBER
 60631936/YLSEIA/FIGURE 8.1

This drawing has been prepared for the use of AECOM's client. It may not be used, modified, reproduced or relied upon by third parties, except as agreed by AECOM or as required by law. AECOM accepts no responsibility, and denies any liability whatsoever, to any party that uses or relies on this drawing without AECOM's express written consent. Do not scale this document. All measurements must be obtained from the stage dimensions.