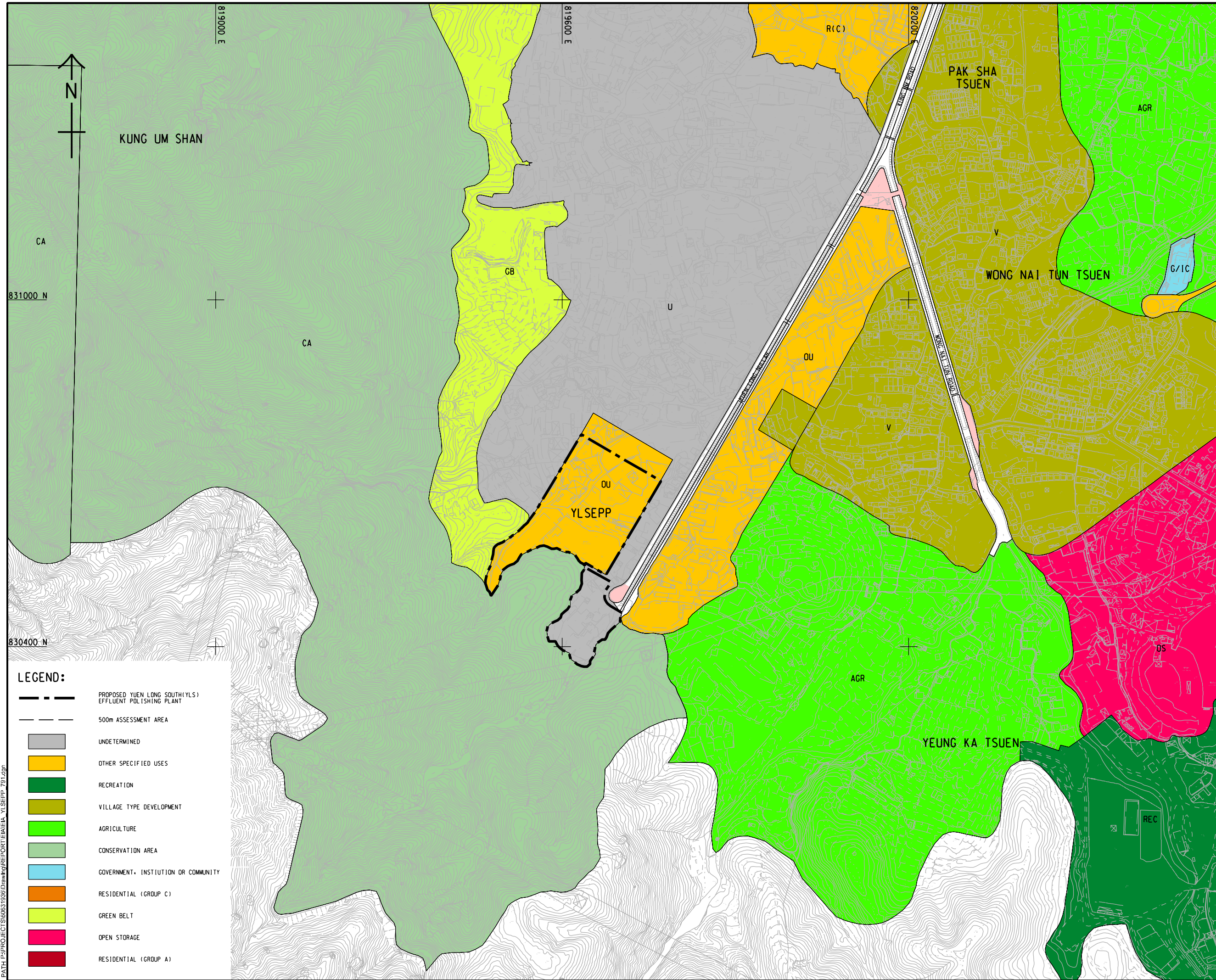


ISO A1 594mm x 841mm
 Approved:
 Checked:
 Designer:
 Project Management Initials:



LEGEND:

	PROPOSED YUEN LONG SOUTH (YLS) EFFLUENT POLISHING PLANT
	500m ASSESSMENT AREA
	UNDETERMINED
	OTHER SPECIFIED USES
	RECREATION
	VILLAGE TYPE DEVELOPMENT
	AGRICULTURE
	CONSERVATION AREA
	GOVERNMENT, INSTITUTION OR COMMUNITY
	RESIDENTIAL (GROUP C)
	GREEN BELT
	OPEN STORAGE
	RESIDENTIAL (GROUP A)

Plot File by: huiqun.zhao 2021/10/15
 PATH: P:\PROJECTS\60631936\Drawings\REPORT\EIA\EA_YLSEPP_791.dgn

This drawing has been prepared for the use of AECOM's client. It may not be used, modified, reproduced or relied upon by third parties, except as agreed by AECOM or as required by law. AECOM accepts no responsibility, and denies any liability whatsoever, to any party that uses or relies on this drawing without AECOM's express written consent. Do not scale this document. All measurements must be obtained from the stated dimensions.



PROJECT
 HUNG SHUI KIU
 EFFLUENT POLISHING
 PLANT AND
 YUEN LONG SOUTH
 EFFLUENT POLISHING
 PLANT - INVESTIGATION

CLIENT
 Drainage Services Department

CONSULTANT
 AECOM Asia Company Ltd.
 www.aecom.com

SUB-CONSULTANTS

ISSUE/REVISION

I/R	DATE	DESCRIPTION	CHK.

STATUS

SCALE 1:3000 **DIMENSION UNIT** METRES

KEY PLAN

PROJECT NO. 60631936 **CONTRACT NO.** CE 6/2019 (DS)

SHEET TITLE
 OUTLINE ZONING PLAN

SHEET NUMBER
 60631936/EIA/YLSEPP/FIGURE 9.1