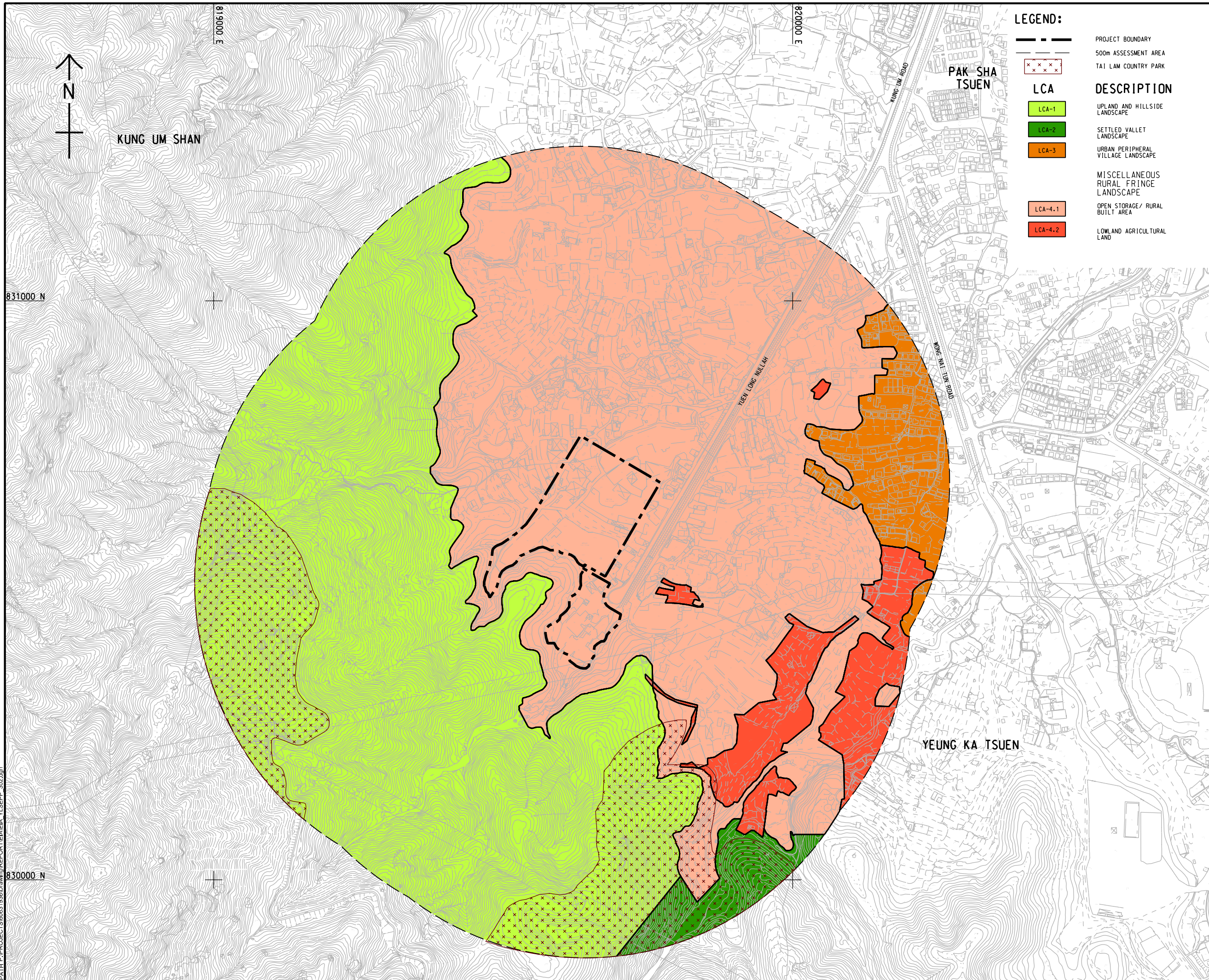


ISO A1 594mm x 841mm
 Approved:
 Checked:
 Designer:
 Project Management Initials:
 819000 E
 820000 E
 831000 N
 830000 N
 This drawing has been prepared for the use of AECOM's client. It may not be used, modified, reproduced or relied upon by third parties, except as agreed by AECOM or as required by law. AECOM accepts no responsibility, and denies any liability whatsoever, to any party that uses or relies on this drawing without AECOM's express written consent. All measurements must be obtained from the stated dimensions.
 Photo File by: XIAODU 2021/7/29
 PATH: P:\PROJECTS\60631936\Drawings\REPORT\EIA\EA_YLSEPP_302.dgn



LEGEND:

- PROJECT BOUNDARY
- 500m ASSESSMENT AREA
- TAI LAM COUNTRY PARK
- LCA**
- LCA-1
- LCA-2
- LCA-3
- MISCELLANEOUS RURAL FRINGE LANDSCAPE**
- LCA-4.1
- LCA-4.2
- LOWLAND AGRICULTURAL LAND**

DESCRIPTION

- UPLAND AND HILLSIDE LANDSCAPE
- SETTLED VALLET LANDSCAPE
- URBAN PERIPHERAL VILLAGE LANDSCAPE
- OPEN STORAGE/ RURAL BUILT AREA
- LOWLAND AGRICULTURAL LAND



PROJECT
 HUNG SHUI KIU EFFLUENT POLISHING PLANT AND YUEN LONG SOUTH EFFLUENT POLISHING PLANT - INVESTIGATION

CLIENT
 渠務署
 Drainage Services Department

CONSULTANT
 AECOM Asia Company Ltd.
 www.aecom.com

SUB-CONSULTANTS

ISSUE/REVISION

NO.	DATE	DESCRIPTION	CHK.

STATUS

SCALE **DIMENSION UNIT**
 A1 1 : 3000 METRES

KEY PLAN

PROJECT NO. **CONTRACT NO.**
 60631936 CE 6/2019 (DS)

SHEET TITLE
 LANDSCAPE CHARACTER AREAS WITH DEVELOPMENT PROPOSAL OVERLAID

SHEET NUMBER
 60631936/EIA/YLSEPP/FIGURE 9.5