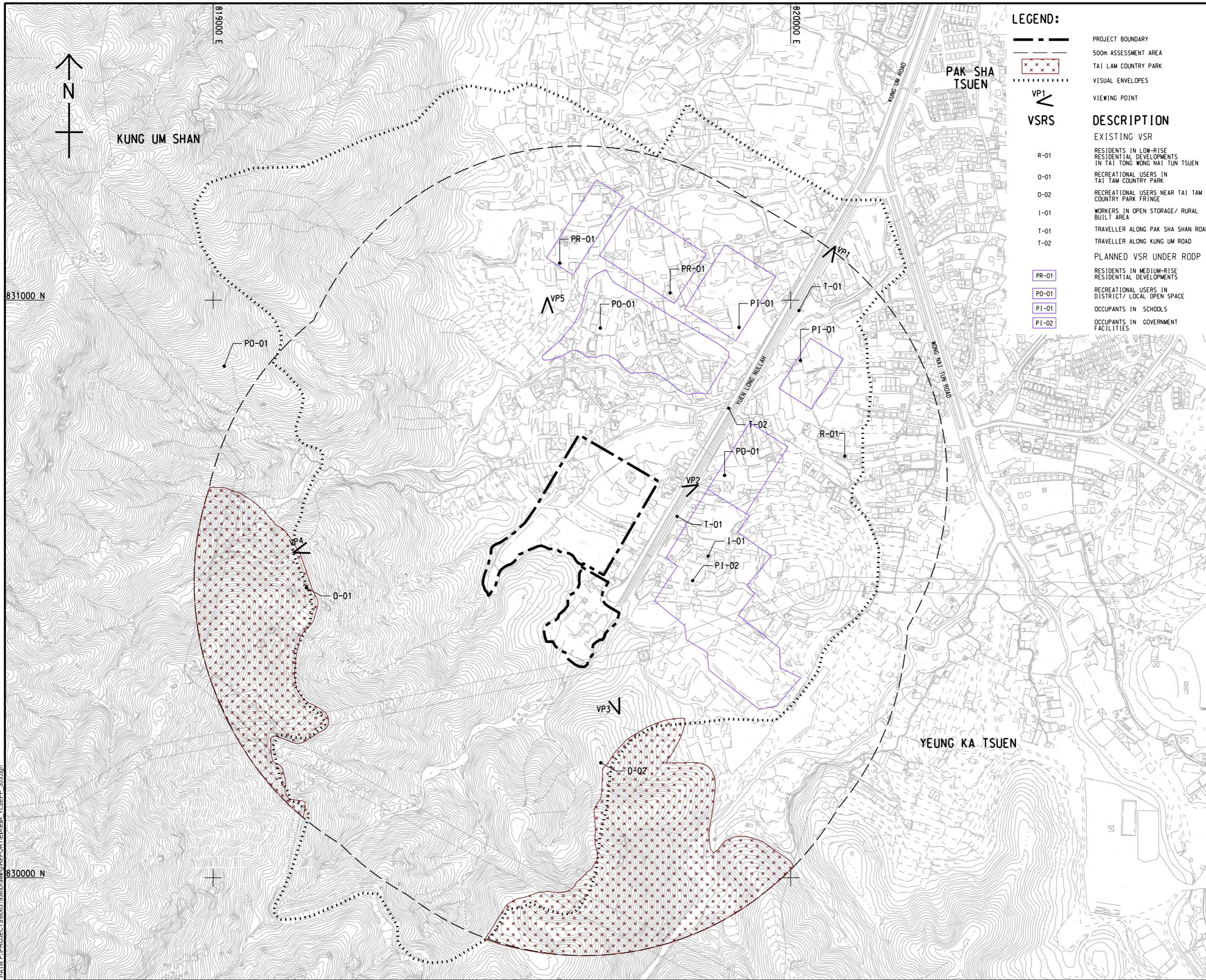


ISO A1 594mm x 841mm
 Approved:
 Checked:
 Designer:
 Project Management Initials:
 Plot File by: jiac.zhao 2021/10/20
 PATH: P:\PROJECTS\60631936\Drawings\REPORT\EIA\YLSEPP_303.dgn



LEGEND:

- PROJECT BOUNDARY
 - 500m ASSESSMENT AREA
 - TAI LAM COUNTRY PARK
 - VISUAL ENVELOPES
 - VIEWING POINT
- DESCRIPTION**
- EXISTING VSR**
- R-01 RESIDENTS IN LOW-RISE RESIDENTIAL DEVELOPMENTS IN TAI TONG WONG NAI TUN TSUEN
 - O-01 RECREATIONAL USERS IN TAI TAM COUNTRY PARK
 - O-02 RECREATIONAL USERS NEAR TAI TAM COUNTRY PARK FRINGE
 - I-01 WORKERS IN OPEN STORAGE/ RURAL BUILT AREA
 - T-01 TRAVELLER ALONG PAK SHA SHAN ROAD
 - T-02 TRAVELLER ALONG KUNG UM ROAD
- PLANNED VSR UNDER RODP**
- PR-01 RESIDENTS IN MEDIUM-RISE RESIDENTIAL DEVELOPMENTS
 - PO-01 RECREATIONAL USERS IN DISTRICT/ LOCAL OPEN SPACE
 - P1-01 OCCUPANTS IN SCHOOLS
 - P1-02 OCCUPANTS IN GOVERNMENT FACILITIES



PROJECT
 HUNG SHUI KIU
 EFFLUENT POLISHING
 PLANT AND
 YUEN LONG SOUTH
 EFFLUENT POLISHING
 PLANT - INVESTIGATION

CLIENT
 渠務署
 Drainage Services Department

CONSULTANT
 AECOM Asia Company Ltd.
 www.aecom.com

SUB-CONSULTANTS

ISSUE/REVISION

IR	DATE	DESCRIPTION	CHK.

STATUS

SCALE **DIMENSION UNIT**
 A1 1 : 3000 METRES

KEY PLAN

PROJECT NO. **CONTRACT NO.**
 60631936 CE 6/2019 (DS)

SHEET TITLE
 VISUAL ENVELOPE AND KEY
 VSRS WITH DEVELOPMENT
 PROPOSAL OVERLAIN

SHEET NUMBER
 60631936/EIA/YLSEPP/FIGURE 9.7

This drawing has been prepared for the use of AECOM's client. It may not be used, modified, reproduced or relied upon by third parties, except as agreed by AECOM or as required by law. AECOM accepts no responsibility, and denies any liability whatsoever, to any party that uses or relies on this drawing without AECOM's express written consent. All measurements must be obtained from the stated dimensions.