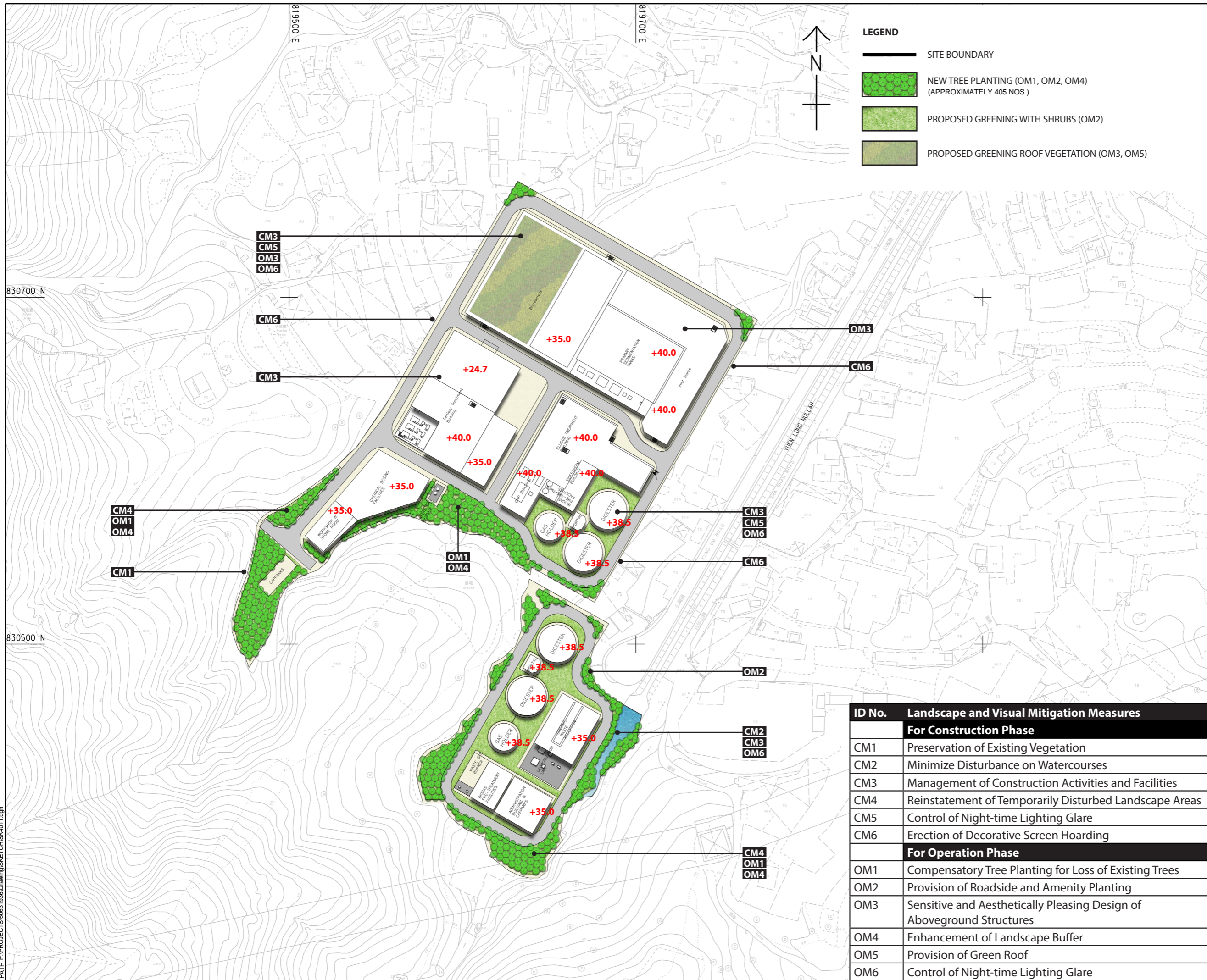

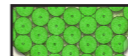




ISO A1 594mm x 841mm
 Approved:
 Checked:
 Designer:
 Project Management Initials:
 2021/12/27
 PATH P:\PROJECTS\60631936\Drawing\SKETCH\CHSK4011.dgn



LEGEND

-  SITE BOUNDARY
-  NEW TREE PLANTING (OM1, OM2, OM4)
(APPROXIMATELY 405 NOS.)
-  PROPOSED GREENING WITH SHRUBS (OM2)
-  PROPOSED GREENING ROOF VEGETATION (OM3, OM5)

AECOM

PROJECT
 HUNG SHUI KIU
 EFFLUENT POLISHING
 PLANT AND
 YUEN LONG SOUTH
 EFFLUENT POLISHING
 PLANT - INVESTIGATION

CLIENT
 渠務署
 Drainage Services Department

CONSULTANT
 AECOM Asia Company Ltd.
 www.aecom.com

SUB-CONSULTANTS
 分列工程顧問公司

ISSUE/REVISION

I/R	DATE	DESCRIPTION	CHK.

STATUS
 備註

SCALE
 1:1000

DIMENSION UNIT
 METRES

KEY PLAN
 索引圖

ID No.	Landscape and Visual Mitigation Measures
For Construction Phase	
CM1	Preservation of Existing Vegetation
CM2	Minimize Disturbance on Watercourses
CM3	Management of Construction Activities and Facilities
CM4	Reinstatement of Temporarily Disturbed Landscape Areas
CM5	Control of Night-time Lighting Glare
CM6	Erection of Decorative Screen Hoarding
For Operation Phase	
OM1	Compensatory Tree Planting for Loss of Existing Trees
OM2	Provision of Roadside and Amenity Planting
OM3	Sensitive and Aesthetically Pleasing Design of Aboveground Structures
OM4	Enhancement of Landscape Buffer
OM5	Provision of Green Roof
OM6	Control of Night-time Lighting Glare

PROJECT NO.
 60631936

CONTRACT NO.
 CE 6/2019 (DS)

SHEET TITLE
 LANDSCAPE AND VISUAL
 MITIGATION PLAN

SHEET NUMBER
 60631936/FIGURE 9.9

This drawing has been prepared for the use of AECOM's client. It may not be used, modified, reproduced or relied upon by third parties, except as required by law. AECOM accepts no responsibility, and denies any liability whatsoever, to any party that uses or relies on this drawing without AECOM's express written consent. All measurements must be obtained from the stated dimensions.

VIEWPOINT 01 EXISTING CONDITION



DAY 1 WITHOUT MITIGATION MEASURE



DAY 1 WITH MITIGATION MEASURE



10 YEARS WITH MITIGATION MEASURE



ISSUE/REVISION 修訂

I/R 修訂	DATE 日期	DESCRIPTION 內容摘要	CHK. 核對

STATUS 階段

SCALE 比例 DIMENSION UNIT 尺寸單位

A1 1 : 1000 METRES

KEY PLAN 索引圖

PROJECT NO. 項目編號 CONTRACT NO. 合約編號

60631936 CE 6/2019 (DS)

SHEET TITLE 圖紙名稱

PHOTOMONTAGE VIEWPOINT 1

SHEET NUMBER 圖紙編號

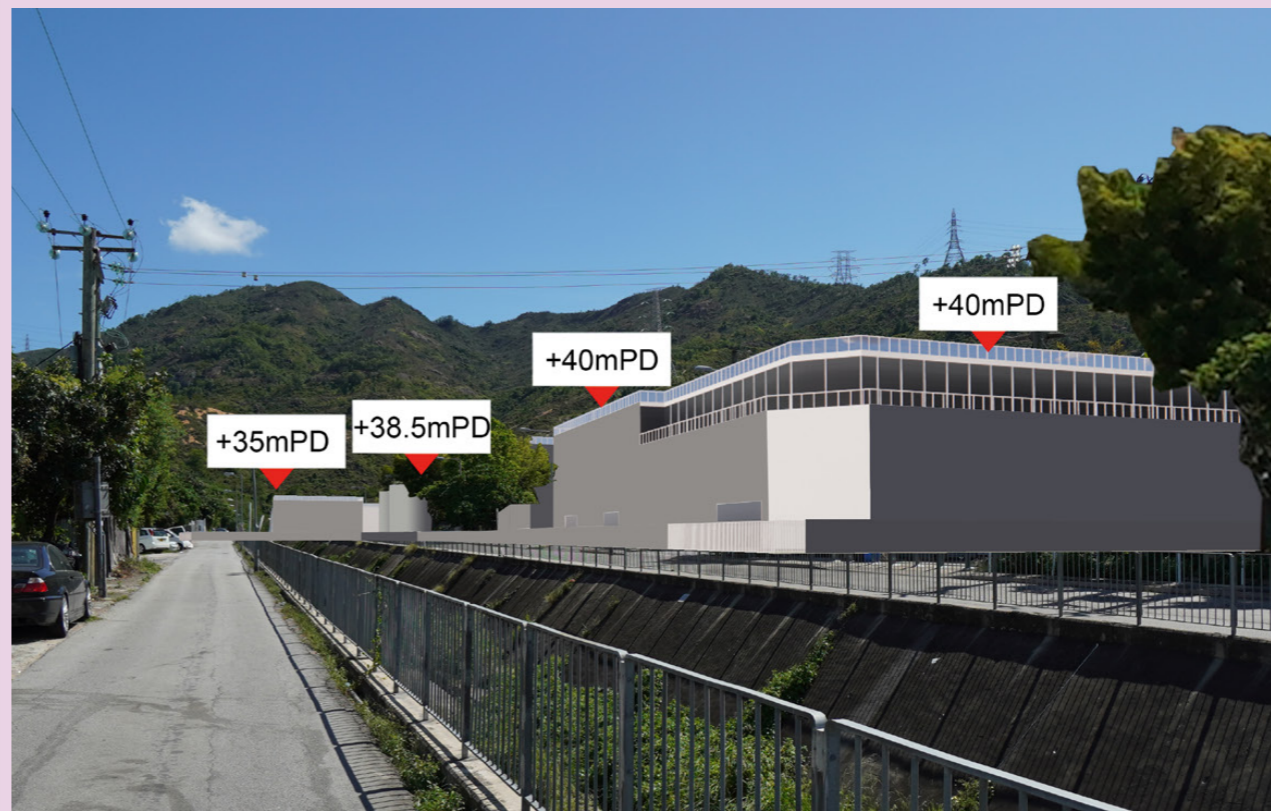
60631936/FIGURE 9.10

This drawing has been prepared for the use of AECOM's client. It may not be used, modified, reproduced or relied upon by third parties, except as agreed by AECOM, or as required by law. AECOM accepts no responsibility, and denies any liability, whatsoever, to any party that uses or relies on this drawing without AECOM's express written consent. Do not scale this document. All measurements must be obtained from the stated dimensions.

VIEWPOINT 02 EXISTING CONDITION



DAY 1 WITHOUT MITIGATION MEASURE



DAY 1 WITH MITIGATION MEASURE



10 YEARS WITH MITIGATION MEASURE



ISSUE/REVISION

I/R	DATE	DESCRIPTION	CHK.

STATUS

SCALE

A1 1 : 1000

DIMENSION UNIT

METRES

KEY PLAN

PROJECT NO.

60631936

CONTRACT NO.

CE 6/2019 (DS)

SHEET TITLE

PHOTOMONTAGE VIEWPOINT 2

SHEET NUMBER

60631936/FIGURE 9.11

This drawing has been prepared for the use of AECOM's client. It may not be used, modified, reproduced or relied upon by third parties, except as agreed by AECOM, or as required by law. AECOM accepts no responsibility, and denies any liability, whatsoever, to any party, that uses or relies on this drawing without AECOM's express written consent. Do not scale this document. All measurements must be obtained from the stated dimensions.

ISO A1 594mm x 841mm
Approved:
Checked:
Designer:
Project Management Initials:
2021/5/27
PATH P:\PROJECTS\60631936\Drawing\SKETCH\SK4011.dgn
Prof File by L:\MR

VIEWPOINT 03 EXISTING CONDITION



DAY 1 WITHOUT MITIGATION MEASURE



DAY 1 WITH MITIGATION MEASURE



10 YEARS WITH MITIGATION MEASURE



PROJECT
項目

**HUNG SHUI KIU
EFFLUENT POLISHING
PLANT AND
YUEN LONG SOUTH
EFFLUENT POLISHING
PLANT - INVESTIGATION**

CLIENT
業主



CONSULTANT
工程顧問公司

AECOM Asia Company Ltd.
www.aecom.com

SUB-CONSULTANTS
分判工程顧問公司

ISSUE/REVISION
修訂

I/R	DATE	DESCRIPTION	CHK.
修訂	日期	內容摘要	核對

STATUS
階段

SCALE
比例

DIMENSION UNIT
尺寸單位

A1 1 : 1000 METRES

KEY PLAN
索引圖

PROJECT NO.
項目編號

CONTRACT NO.
合約編號

60631936 CE 6/2019 (DS)

SHEET TITLE
圖紙名稱

PHOTOMONTAGE VIEWPOINT 3

SHEET NUMBER
圖紙編號

60631936/FIGURE 9.12

This drawing has been prepared for the use of AECOM's client. It may not be used, modified, reproduced or relied upon by third parties, except as agreed by AECOM, or as required by law. AECOM accepts no responsibility, and denies any liability, whatsoever, to any party, that uses or relies on this drawing without AECOM's express written consent. Do not scale this document. All measurements must be obtained from the stated dimensions.

ISO A1 594mm x 841mm
Approved:
Checked:
Designer:
Project Management Initials:
2021/12/27
PATH P:\PROJECTS\60631936\Drawing\SKETCH\CHS\K4011.dgn

VIEWPOINT 05 EXISTING CONDITION



DAY 1 WITHOUT MITIGATION MEASURE



DAY 1 WITH MITIGATION MEASURE



10 YEARS WITH MITIGATION MEASURE



PROJECT
項目

**HUNG SHUI KIU
EFFLUENT POLISHING
PLANT AND
YUEN LONG SOUTH
EFFLUENT POLISHING
PLANT - INVESTIGATION**

CLIENT
業主



CONSULTANT
工程顧問公司

AECOM Asia Company Ltd.
www.aecom.com

SUB-CONSULTANTS
分判工程顧問公司

ISSUE/REVISION
修訂

I/R	DATE	DESCRIPTION	CHK.

STATUS
階段

SCALE
比例

DIMENSION UNIT
尺寸單位

A1 1 : 1000 METRES

KEY PLAN
索引圖

PROJECT NO.
項目編號

CONTRACT NO.
合約編號

60631936 CE 6/2019 (DS)

SHEET TITLE
圖紙名稱

PHOTOMONTAGE VIEWPOINT 5

SHEET NUMBER
圖紙編號

60631936/FIGURE 9.14

This drawing has been prepared for the use of AECOM's client. It may not be used, modified, reproduced or relied upon by third parties, except as agreed by AECOM, or as required by law. AECOM accepts no responsibility, and denies any liability, whatsoever, to any party, that uses or relies on this drawing without AECOM's express written consent. Do not scale this document. All measurements must be obtained from the stated dimensions.