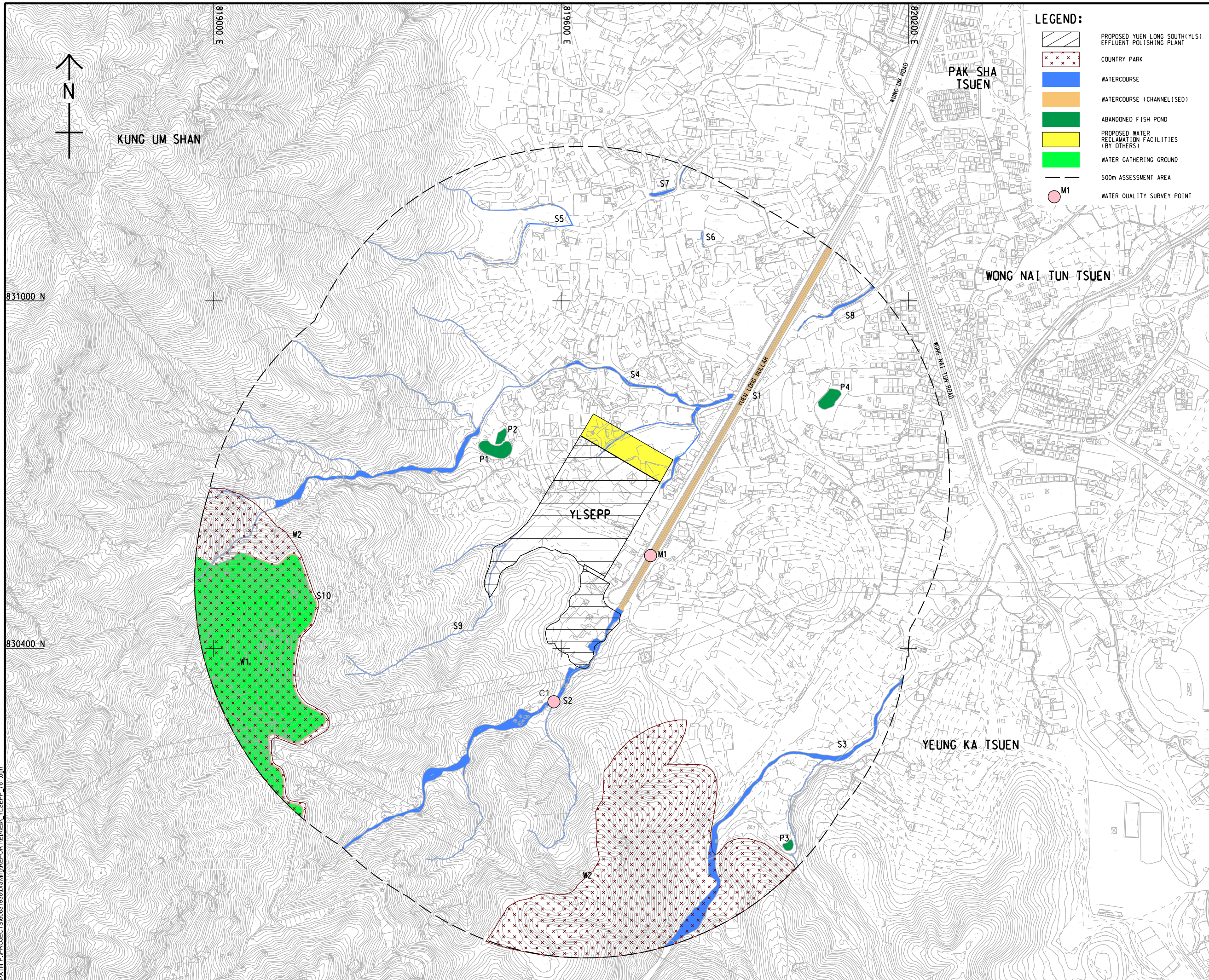


ISO A1 594mm x 841mm  
 Approved:  
 Checked:  
 Designer:  
 Project Management Initials:  
 831000 N  
 830400 N  
 6/1/2022  
 PATH P:\PROJECTS\60631936\Drawing\REPORT\A1A1A YLSEPP\_761.dgn



**LEGEND:**

- PROPOSED YUEN LONG SOUTH (YLS) EFFLUENT POLISHING PLANT
- COUNTRY PARK
- WATERCOURSE
- WATERCOURSE (CHANNELISED)
- ABANDONED FISH POND
- PROPOSED WATER RECLAMATION FACILITIES (BY OTHERS)
- WATER GATHERING GROUND
- 500m ASSESSMENT AREA
- WATER QUALITY SURVEY POINT



**PROJECT**  
 HUNG SHUI KIU  
 EFFLUENT POLISHING  
 PLANT AND  
 YUEN LONG SOUTH  
 EFFLUENT POLISHING  
 PLANT - INVESTIGATION

**CLIENT**  
 渠務署  
 Drainage Services Department

**CONSULTANT**  
 AECOM Asia Company Ltd.  
 www.aecom.com

**SUB-CONSULTANTS**

**ISSUE/REVISION**

IR	DATE	DESCRIPTION	CHK.

**STATUS**

**SCALE**      **DIMENSION UNIT**  
 A1 1 : 3000      METRES

**KEY PLAN**

**PROJECT NO.**      **CONTRACT NO.**  
 60631936      CE 6/2019(DS)

**SHEET TITLE**  
 LOCATIONS OF WATER QUALITY  
 MONITORING STATIONS FOR  
 CONSTRUCTION PHASE

**SHEET NUMBER**  
 APPENDIX E1

This drawing has been prepared for the use of AECOM's client. It may not be used, modified, reproduced or relied upon by third parties, except as agreed by AECOM or as required by law. AECOM accepts no responsibility, and denies any liability whatsoever, to any party that uses or relies on this drawing without AECOM's express written consent. Do not scale this document. All measurements must be obtained from the stated dimensions.