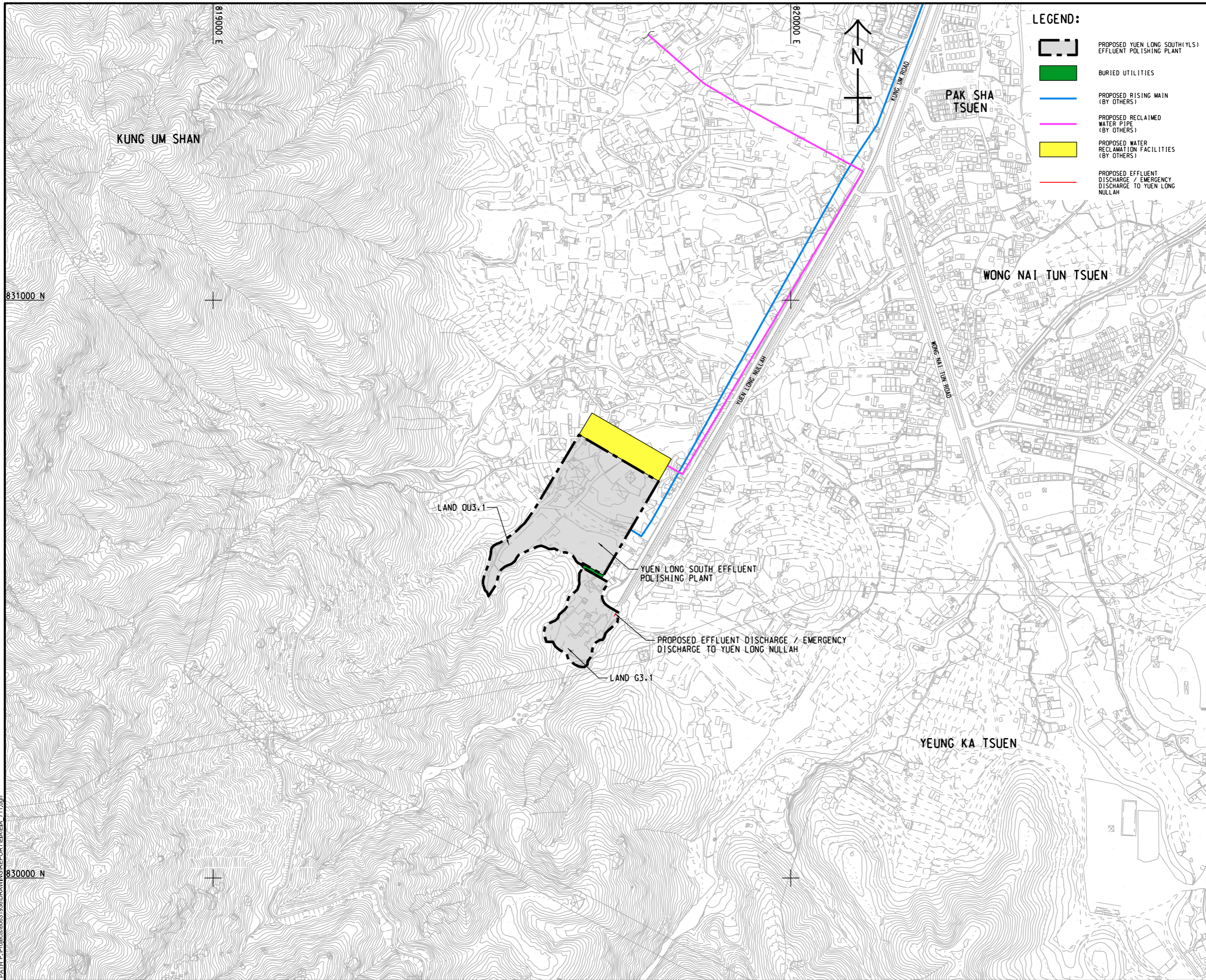


ISO A1 594mm x 841mm
 Approved:
 Checked:
 Designer:
 Project Management Initials:
 819000 E
 820000 E
 831000 N
 830000 N
 Path P:\Projects\60631936\DRAWING\REPORT\EA\EA_711.dgn
 Plot File by: yauky 17/11/2022
 This drawing has been prepared for the use of AECOM's client. It may not be used, modified, reproduced or relied upon by third parties, except as agreed by AECOM or as required by law. AECOM accepts no responsibility, and denies any liability whatsoever, to any party that uses or relies on this drawing without AECOM's express written consent. Do not scale this document. All measurements must be obtained from the stated dimensions.



PROJECT
 HUNG SHUI KIU
 EFFLUENT POLISHING
 PLANT AND
 YUEN LONG SOUTH
 EFFLUENT POLISHING
 PLANT - INVESTIGATION

CLIENT

 渠務署
 Drainage Services Department

CONSULTANT
 AECOM Asla Company Ltd.
 www.aecom.com

SUB-CONSULTANTS

ISSUE/REVISION

I/R	DATE	DESCRIPTION	CHK.

STATUS

SCALE
 A1 1 : 3000
DIMENSION UNIT
 METRES

KEY PLAN

PROJECT NO.
 60631936
CONTRACT NO.
 CE 6/2019 (DS)

SHEET TITLE
 LOCATION OF PROPOSED
 YUEN LONG SOUTH
 EFFLUENT POLISHING PLANT

SHEET NUMBER
 60631936/EIA/FIGURE 1.1